
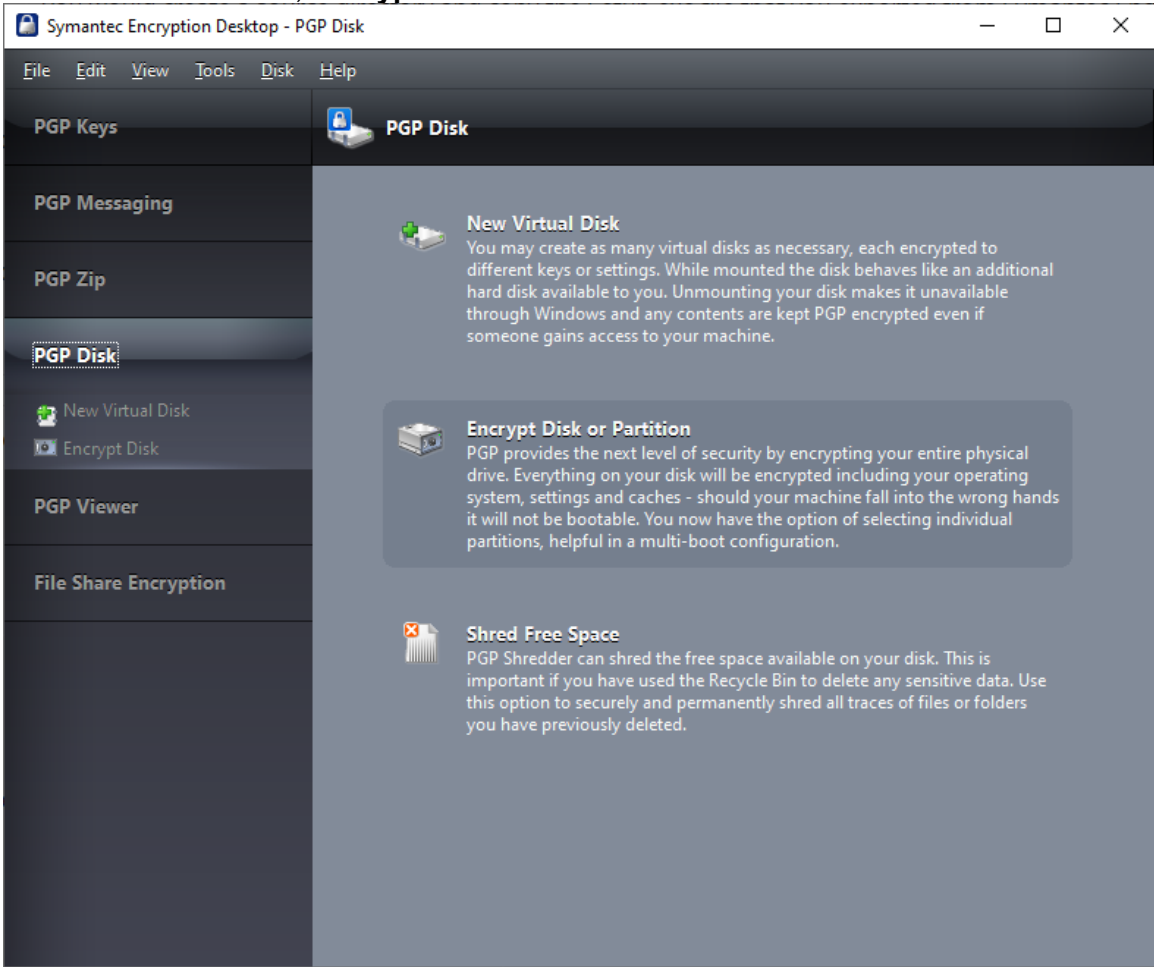


How to upgrade computers encrypted with Symantec Endpoint Encryption to a Windows 10 (1909) release

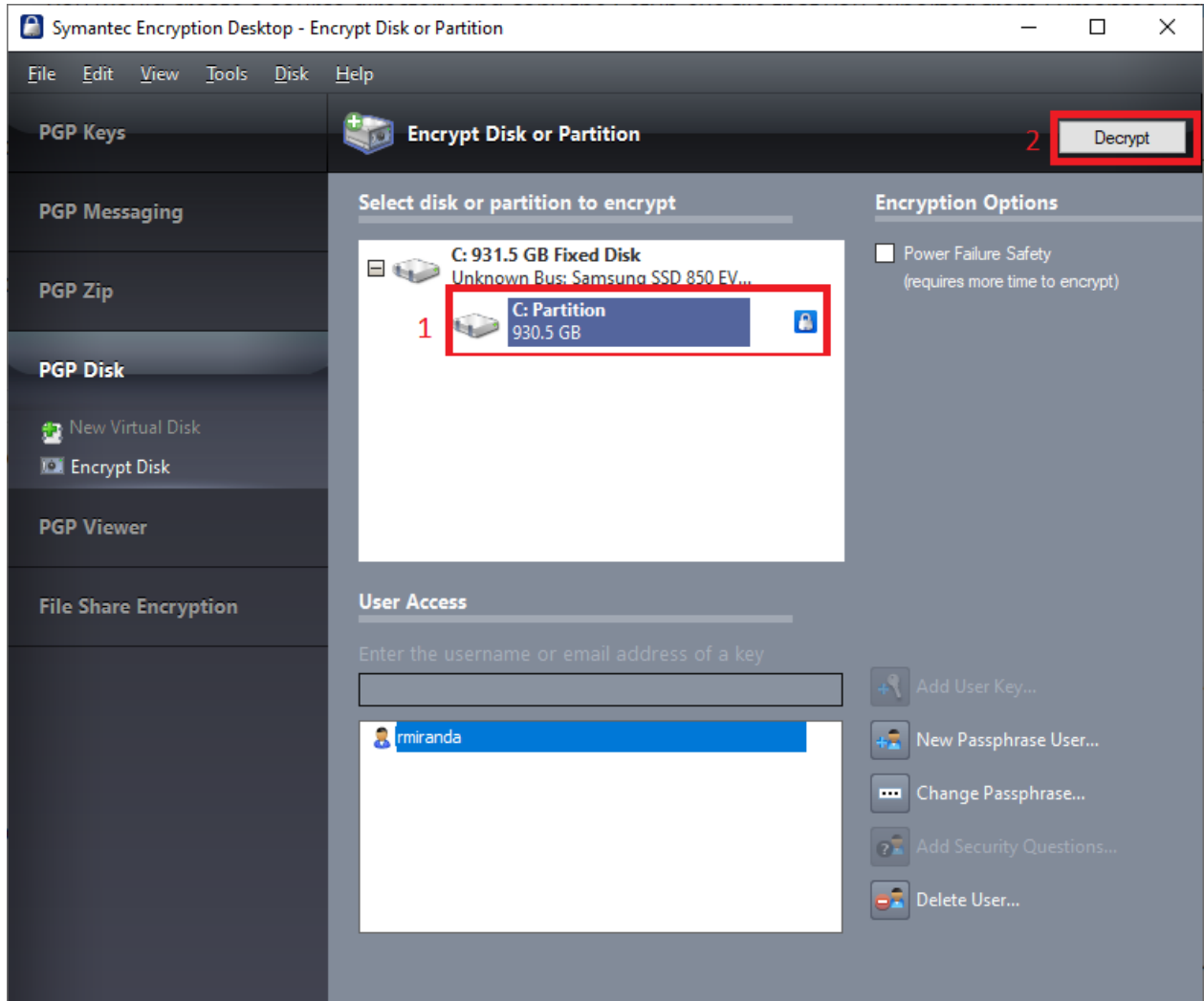
- Follow steps provided by Symantec from article “[How to upgrade computers encrypted with Symantec Endpoint Encryption to a Windows 10 release](https://support.symantec.com/us/en/article.howto125875.html)”
- Article is available from <https://support.symantec.com/us/en/article.howto125875.html>
- **Or Follow below recommendations.**

STEPS	DESCRIPTIONS
1.	<p>Open Symantec Encryption Desktop application</p> 
2.	<p>From Symantec Encryption Desktop window</p> <ul style="list-style-type: none">• Click PGP Disk, Encryption Disk or Partition 

Microsoft Windows 10 (1909) Installation

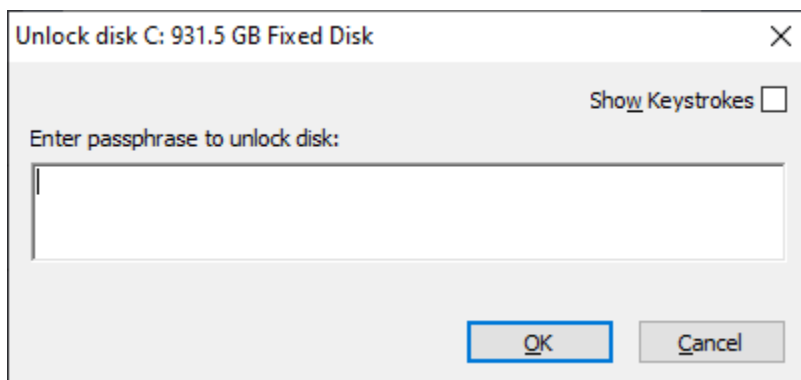
3. From Encryption Disk or Partition

- Select your Disk Partition
- Then Click Decrypt to decrypt the Disk

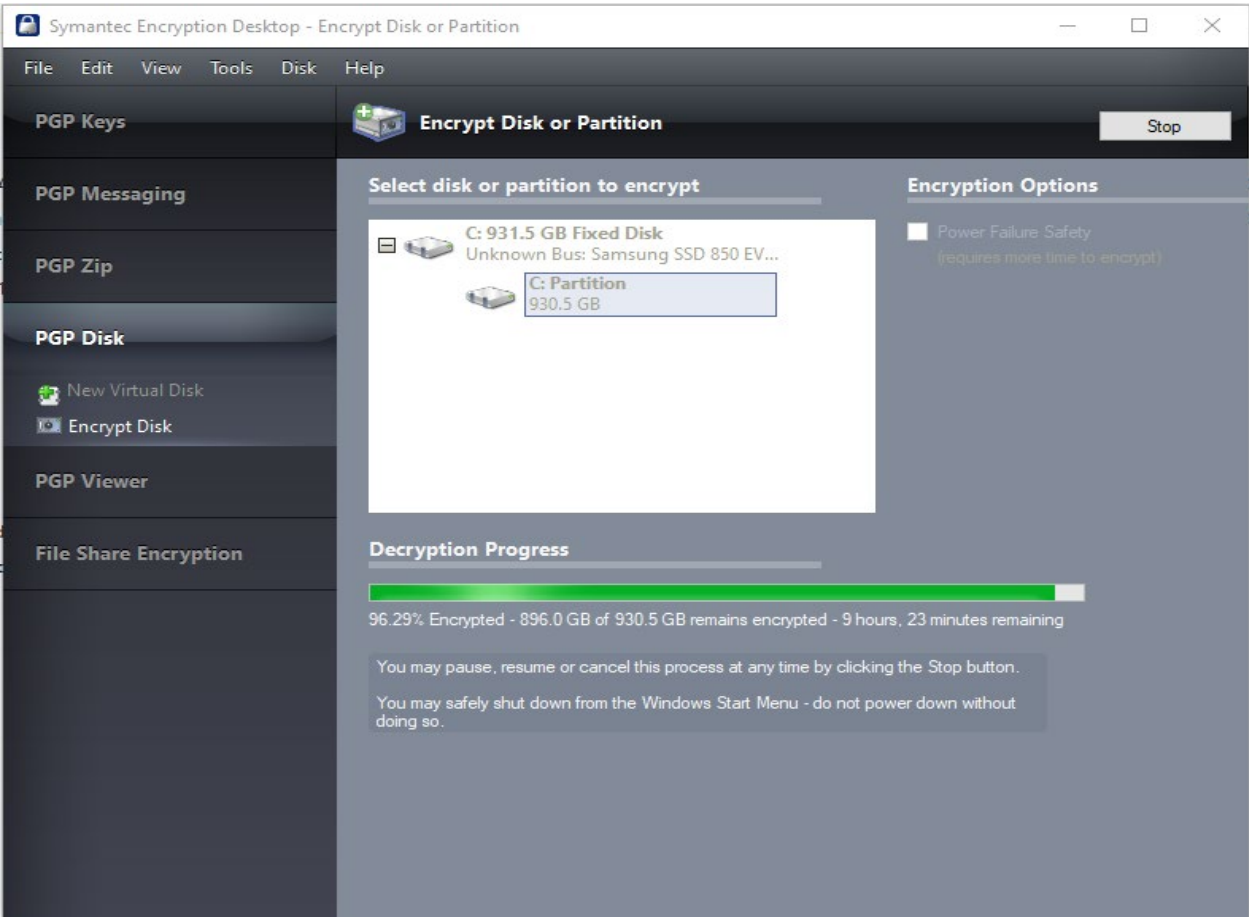



4. From **Unlock Disk** pop-up window

- Enter your **passphrase** to start unlocking the disk



Microsoft Windows 10 (1909) Installation

	
5.	<p>Once Decryption is completed and Windows 10 Installer is available follow below procedure or continue to step 6.</p> <ul style="list-style-type: none">Start Windows 10 (1909) upgrade installation 
6.	<p>Once Decryption is completed</p> <ul style="list-style-type: none">Download Windows 10 Upgrade Assistance or Mount Windows 10 InstallerOpen the Application and follow the instructions.

Now you can update Windows 10 and start the encryption once Windows Update is completed.