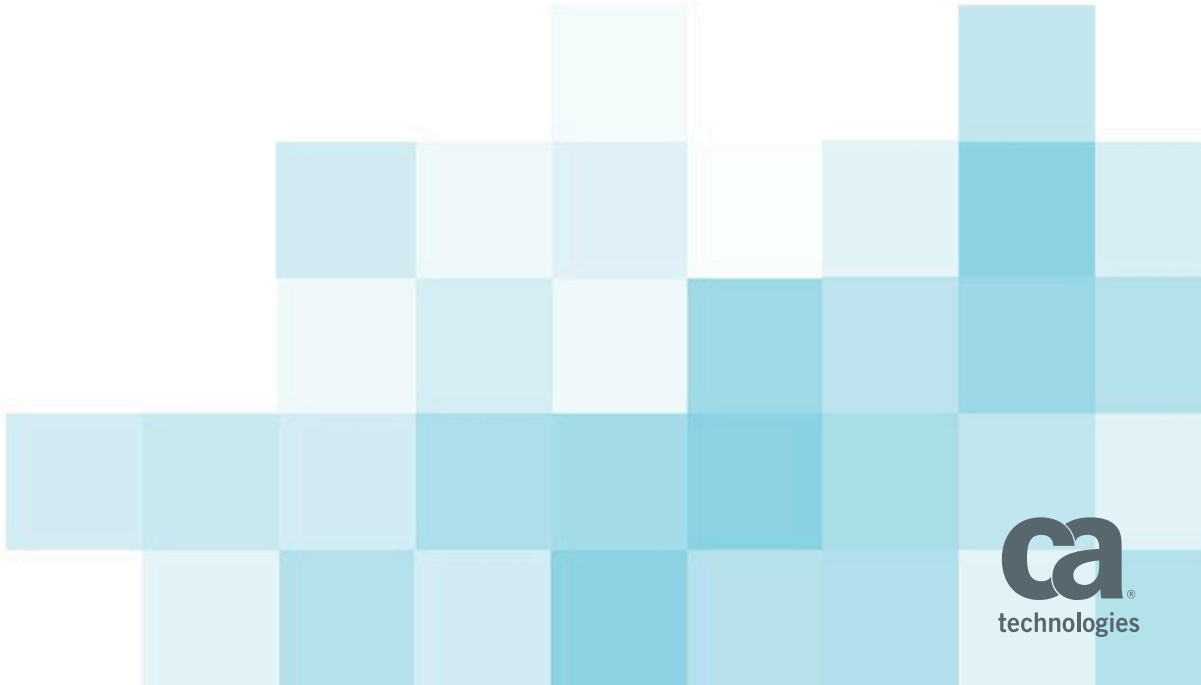


Endevor V18 Install & Maintenance

Keeping up to date with Endevor incremental releases and FDPs
Eoin O'Cleirigh

April 2016



FOR PURPOSES ONLY

Terms of this Presentation

This presentation was based on current information and resource allocations as of April 2016 and is subject to change or withdrawal by CA at any time without notice. Notwithstanding anything in this presentation to the contrary, this presentation shall not serve to (i) affect the rights and/or obligations of CA or its licensees under any existing or future written license agreement or services agreement relating to any CA software product; or (ii) amend any product documentation or specifications for any CA software product. The development, release and timing of any features or functionality described in this presentation remain at CA's sole discretion. Notwithstanding anything in this presentation to the contrary, upon the general availability of any future CA product release referenced in this presentation, CA will make such release available (i) for sale to new licensees of such product; and (ii) to existing licensees of such product on a when and if-available basis as part of CA maintenance and support, and in the form of a regularly scheduled major product release. Such releases may be made available to current licensees of such product who are current subscribers to CA maintenance and support on a when and if-available basis. In the event of a conflict between the terms of this paragraph and any other information contained in this presentation, the terms of this paragraph shall govern.

Certain information in this presentation may outline CA's general product direction. All information in this presentation is for your informational purposes only and may not be incorporated into any contract. CA assumes no responsibility for the accuracy or completeness of the information. To the extent permitted by applicable law, CA provides this presentation "as is" without warranty of any kind, including without limitation, any implied warranties or merchantability, fitness for a particular purpose, or non-infringement. In no event will CA be liable for any loss or damage, direct or indirect, from the use of this document, including, without limitation, lost profits, lost investment, business interruption, goodwill, or lost data, even if CA is expressly advised in advance of the possibility of such damages. CA confidential and proprietary. No unauthorized copying or distribution permitted.

Agenda

1

INTRODUCTION – DIFFERENCE BETWEEN INSTALL AND MAINTENANCE

2

SCENARIOS - MAINTENANCE, APAR, FDP

3

COMPARE CSM AND ESD PROCESS / WHAT'S COMMON

4

FDP INSTALL/MAINTENANCE

5

DEMO(S)

6

STREAMLINING TIPS / BEST PRACTICE...

Introduction

Difference between install and (incremental) maintenance

Install

- Once for each major release
- Large functional change
- Big project, lots of testing
- Review every option/customization
- Sandbox, before full deployment

Maintenance

- Iteratively
(Each incremental?)
- Feature *and* maint PTFs
- Bite-sized, test what's changed
- Re-use existing config
(check for retrofit)
- Sandbox/Logon Proc before deployment

Some new terms apply to incremental release see: https://support.ca.com/phpdocs/0/common/Incremental_Releases_Support_Policy.pdf

Scenarios

Maintenance, APAR, FDP

- Maintenance
 - Published “Problem” PTFs (CARS Level)
 - Incremental “Feature” PTFs
 - Test APARs

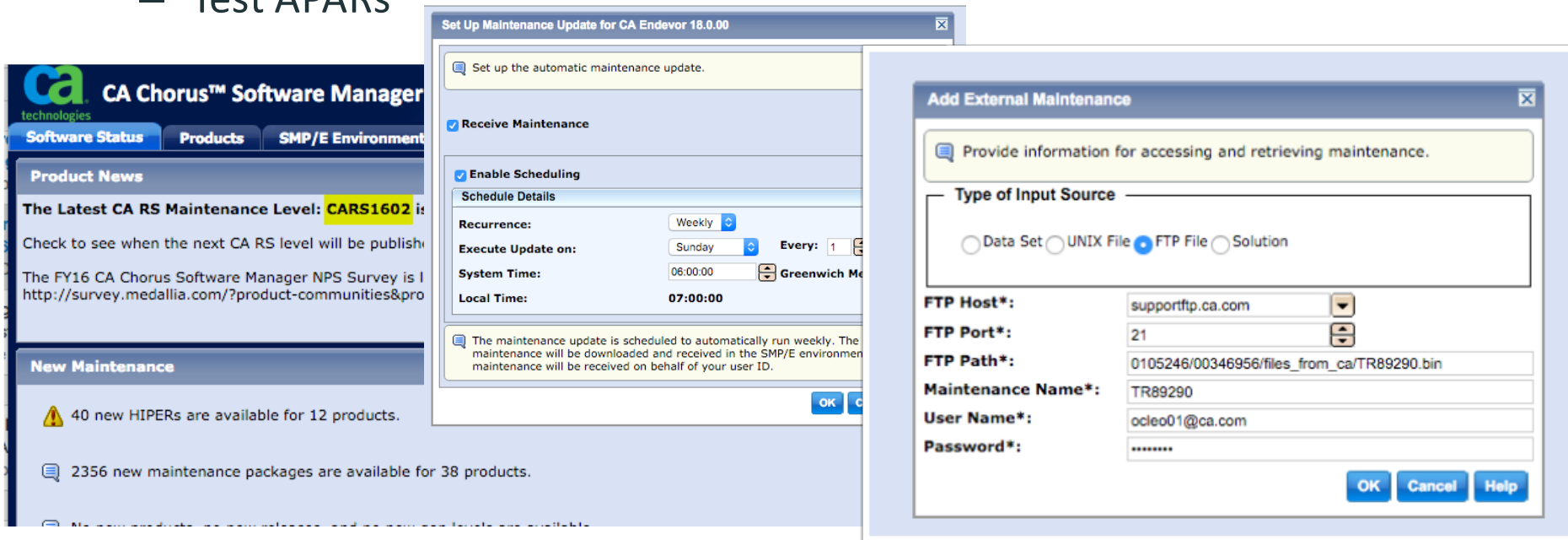
- FDP
 - Prototype only
 - Preview of “user request” features not yet included
 - Your feedback will drive adoption..

If you are on incremental track – it’s strongly recommended you participate in validation reviews – vote when a feature provides MVP, raise a challenge when you foresee an issue, or a slight tweak that will add value

Scenarios

Maintenance, APAR, FDP

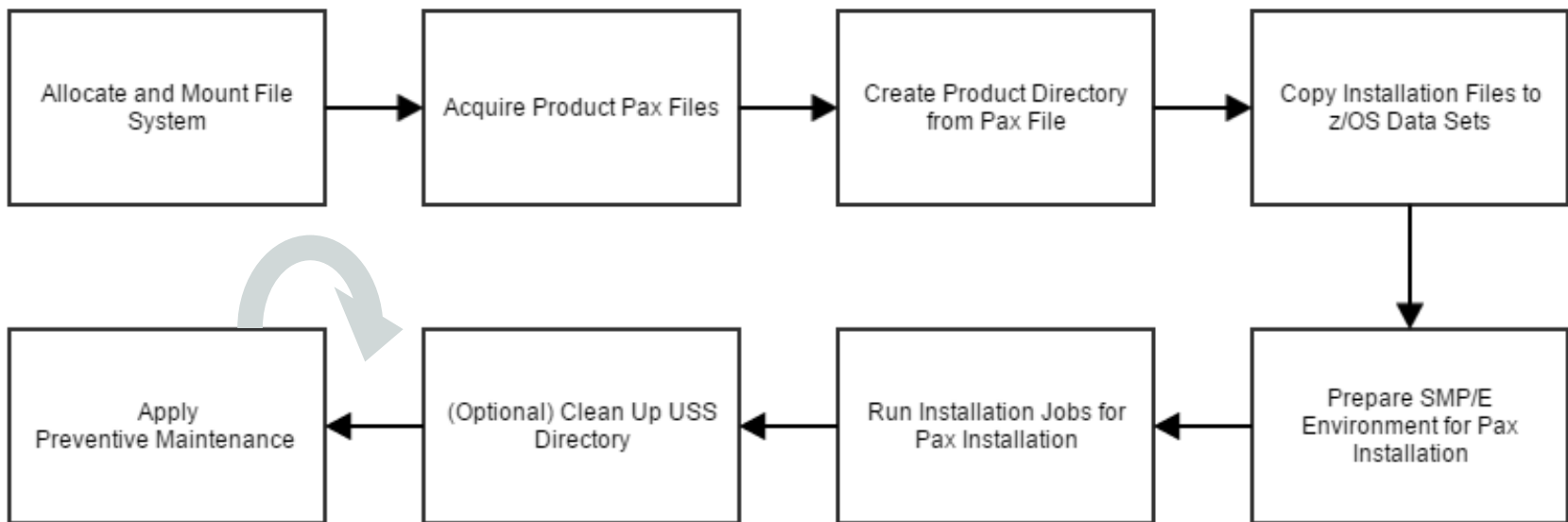
- Maintenance
 - Published “Problem” PTFs (CARS Level)
 - Incremental “Feature” PTFs
 - Test APARs



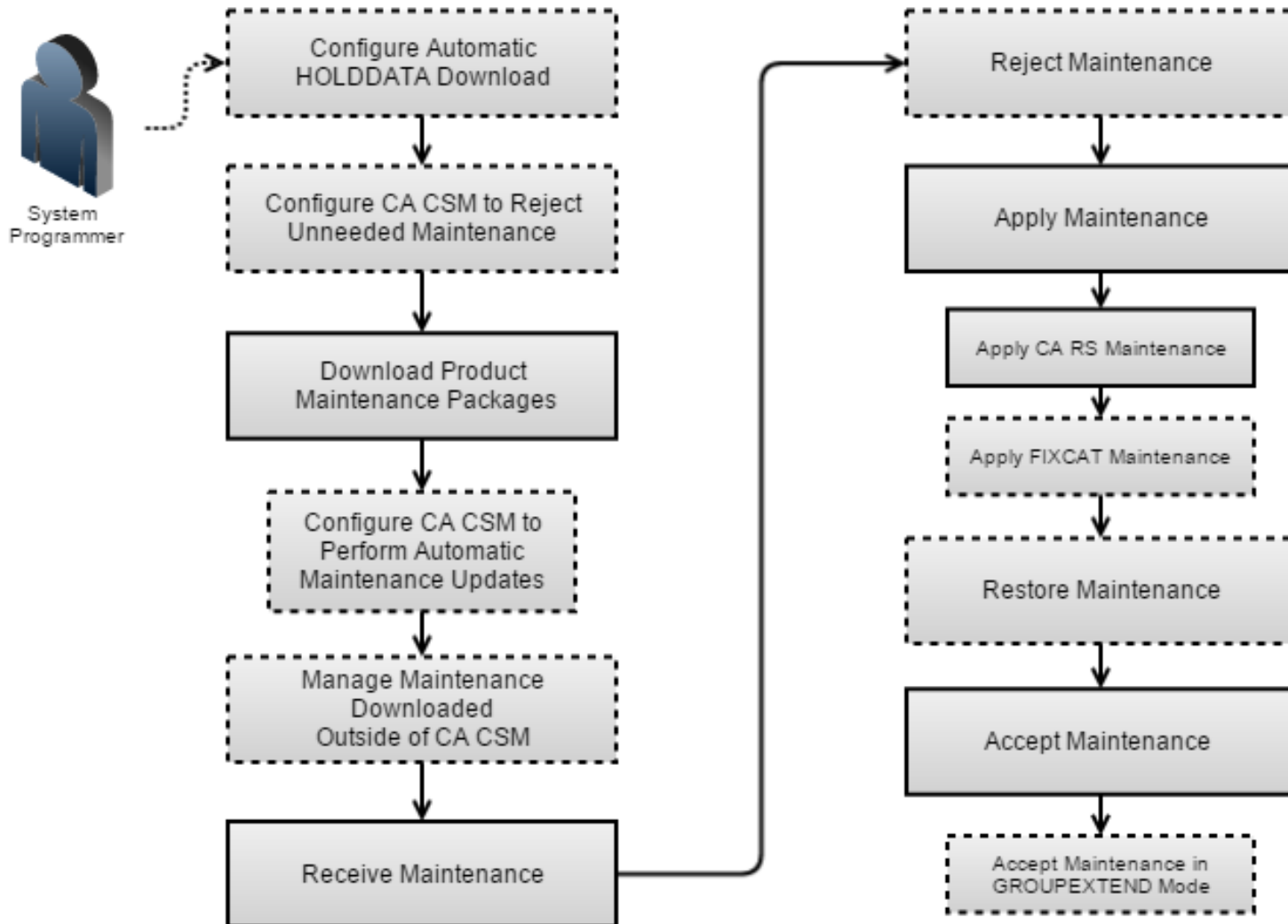
If you are on incremental track – it's strongly recommended you participate in validation reviews – vote when a feature provides MVP, raise a challenge when you foresee an issue, or a slight tweak that will add value

Process overview (ESD)

How to Install Your Product Using a Pax File



Process overview (CSM)



Process overview

Compare CSM and ESD process

ESD

- Download
- Receive
- Apply
- [copy to execution libraries]
- Configure
- [Hold Data]
- [Accept]

CSM

- Update Maintenance
- Receive
- Apply
- [Deploy]
- Configure
- [Hold Data]
- [Accept]

Process overview

What's COMMON

Common

- Backup
(Do Maintenance)
- Retrofit / Restore
- Authorize libs
- Update LinkList, or...
- TSO Logon Proc
- Test...

Process overview

FDP Maintenance

- Unzip the package
- Upload the .XMIT file as binary (FB80)
- Receive the .XMIT file to create a PDS
- Exec @@START1 member in this file to set installation defaults - HLQs for Endevor and the new HLQ for the LongName FDP
- Exec @@START2 member to create the @@START3 job (it should be tailored ready to go) and submit it
- Exec @@START4 to receive the ESort, EOnly and EPrint files (optional)
- Exec @@START5 to launch a sample startup Rexx, and FDP Menu as the IVP

DEMO

Streamlining tips / Best practice...

- Some things *have* to be edited in place
 - WSTOMENV, ENWSInstallOptions.properties, Tables, Skeletons
 - Keep the edited version elsewhere (backup)
- Build a custom Deploy
 - Copy and rename or Copy Exclude
 - ocopy or pax for USS
- Build an automated configure
 - Three way compare (Root=Previous, D1=Current, D2=Custom)
 - Copy new 'Curr' to Previous (maybe GDG or even Endeavor!)
 - Replace “backed up” members in place
 - Execute BC1JJB03 & BC1JB TAB



Sample Deploy (with Exclude)

```
//**
//** THIS IS A MANUAL DEPLOYMENT, COPYING ALL OF THE
//** TARGET LIBRARIES TO THE DEPLOYED/EXECUTABLE LIBS.
//**
//** INP=CAIPRODD.NDVR.V180S0A   TARGET NAME
//** OUT=CAIPRODD.NDVR.V180PRD   DEPLOY NAME
//**
//INP SET INP=CAIPRODD.NDVR.V180S0A   INPUT   TARGET
//OUT SET OUT=CAIPRODD.NDVR.V180PRD   OUTPUT  DEPLOYED/E
//**
//** COPY ALL FROM TARGET TO PROD...
//**
- - - - -
//CSIQAUTH EXEC COPYPROD,LOWLVL=CSIQAUTH
//CSIQAUTU EXEC COPYPROD,LOWLVL=CSIQAUTU
//CSIQCLS0 EXEC COPYPROD,LOWLVL=CSIQCLS0
//CSIQDATA EXEC COPYPROD,LOWLVL=CSIQDATA
//CSIQJCL EXEC COPYJCL,LOWLVL=CSIQJCL
//CSIQJCLR EXEC COPYPROD,LOWLVL=CSIQJCLR
//CSIQLOAD EXEC COPYPROD,LOWLVL=CSIQLOAD
//CSIQMENU EXEC COPYPROD,LOWLVL=CSIQMENU
//CSIQOPTN EXEC COPYPROD,LOWLVL=CSIQOPTN
//CSIQPENU EXEC COPYPROD,LOWLVL=CSIQPENU
//CSIQPRCR EXEC COPYPROD,LOWLVL=CSIQPRCR
//CSIQSAMP EXEC COPYPROD,LOWLVL=CSIQSAMP
//CSIQSENU EXEC COPYSENU,LOWLVL=CSIQSENU
//CSIQSRC EXEC COPYPROD,LOWLVL=CSIQSRC
//CSIQTENU EXEC COPYPROD,LOWLVL=CSIQTENU
//CSIQPLD EXEC COPYPROD,LOWLVL=CSIQPLD
```

Sample Deploy (CopyProcs)

```
//COPYPROD  PROC  LOWLVL=
//STEP010    EXEC  PGM=IEBCOPY
//SYSPRINT   DD   SYSOUT=*
//SYSUT3     DD   UNIT=SYSDA,SPACE=(CYL,(1,1))
//INDS       DD   DISP=SHR,DSN=&INP..&LOWLVL
//OUTDS      DD   DISP=SHR,DSN=&OUT..&LOWLVL
//SYSIN      DD   DSN=BST.BRB.ADMINJCL(CPYALLI),DISP=SHR
//           PEND
//COPYJCL    PROC  LOWLVL=
//STEP010    EXEC  PGM=IEBCOPY
//SYSPRINT   DD   SYSOUT=*
//SYSUT3     DD   UNIT=SYSDA,SPACE=(CYL,(1,1))
//INDS       DD   DISP=SHR,DSN=&INP..&LOWLVL
//OUTDS      DD   DISP=SHR,DSN=&OUT..&LOWLVL
//SYSIN      DD   DSN=BST.BRB.ADMINJCL(CPYALLJ),DISP=SHR
//           PEND
//COPYSENU   PROC  LOWLVL=
//STEP010    EXEC  PGM=IEBCOPY
//SYSPRINT   DD   SYSOUT=*
//SYSUT3     DD   UNIT=SYSDA,SPACE=(CYL,(1,1))
//INDS       DD   DISP=SHR,DSN=&INP..&LOWLVL
//OUTDS      DD   DISP=SHR,DSN=&OUT..&LOWLVL
//SYSIN      DD   DSN=BST.BRB.ADMINJCL(CPYALLS),DISP=SHR
//           PEND
```

Sample Deploy (Include Members)

```
BST.BRB.ADMINJCL(CPYALLI) - 01.01                                Co
=>
***** Top of Data *****
COPY INDD=( (INDS,R) ),OUTDD=OUTDS  COPY/REP ALL MEMBERS
***** Bottom of Data *****
```

```
BST.BRB.ADMINJCL(CPYALLS) - 01.02                                Co
=>
***** Top of Data *****
COPY INDD=( (INDS,R) ),OUTDD=OUTDS  COPY/REP ALL MEMBERS
E M=SCMM@LIB
E M=C1SB3000
***** Bottom of Data *****
```

```
BST.BRB.ADMINJCL(CPYALLJ) - 01.01                                Co
=>
***** Top of Data *****
COPY INDD=( (INDS,R) ),OUTDD=OUTDS  COPY/REP ALL MEMBERS
E M=(BC1JJB03,BC1JTABL,BC1JTAB1,SCMM@LIB,WSTOMCCO)
E M=(WSTOMCCS,WSTOMENV)
E M=(WSTOTSO1,WEBSTSO1,TSO1MCCS)
***** Bottom of Data *****
```


Summary

- ✓ Difference between install and maintenance
- ✓ Considered Scenarios - Maintenance, APAR, FDP
- ✓ Compare and contrast CSM ESD and FDP processes
- ✓ KISS (Simple Automation)
- Questions?



Eoin O’Cleirigh

Engineering Services Architect

Eoin.Ocleirigh@ca.com



in

