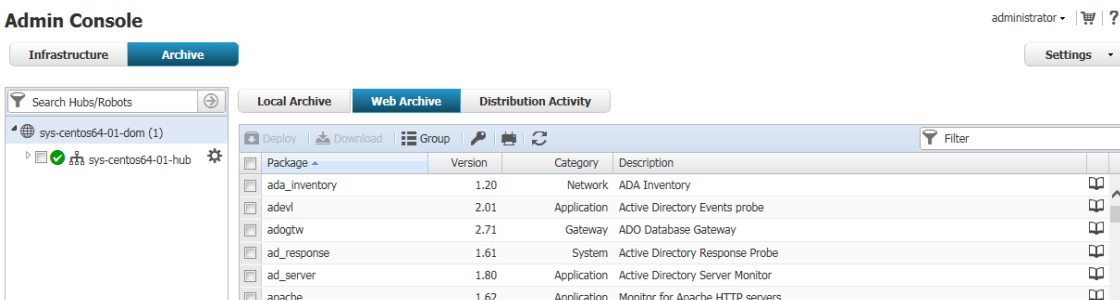


Downloading CA UIM Probes

Once you have installed CA UIM, you can download probes using one of the following methods.

Admin Console

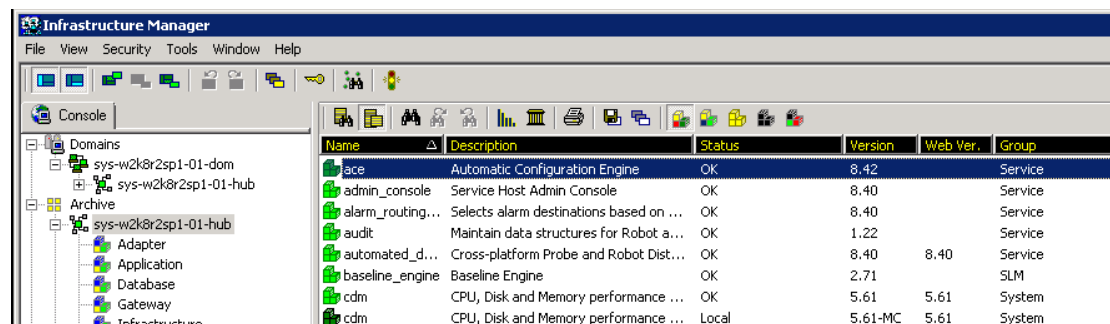


Admin console is a browser-based GUI that allows you to manage your CA UIM infrastructure on virtually any desktop or server operating system.

You can use the **Web Archive** tab to view and download all available probes.

For more information, refer to the article [Using Admin Console](#) on the [CA UIM DocOps Space](#).

Infrastructure Manager



Infrastructure Manager is a thick-client alternative to the Admin Console application. By navigating to the **Archive** Node, you can view and download all available CA UIM probes.

Note: Infrastructure Manager is a Windows-only application that must be downloaded separately after installing CA UIM.

For more information, refer to the article [Using Infrastructure Manager](#) on the [CA UIM DocOps Space](#).

Note for Users behind a Firewall

If you require a direct-access link to your probes, you can use <http://support.nimsoft.com/Default.aspx?center=felles/archive>. Once you have downloaded a probe ZIP file, you can use Infrastructure Manager to import it into your Local Archive.