



# ***IET Product Update February 2016***



# Agenda

---

- ▲ Product Overview
- ▲ Release 8.6
- ▲ Rapide Status
- ▲ Gen Studio Plugin

# IET Products

## Life-Cycle Management



**GuardIEn**  
Life-Cycle Management



**XOS**  
Manage External Objects

## Quality Assurance and Testing



**VerifIEr**  
Automated QA



**pathvIEW**  
Code Coverage Testing



**xTrace**  
Advanced tracing for z/OS

## Application Development



**Rapide**  
State of the Art Desktop,  
Browser and Mobile UI



**IETeGUI**  
Gen Windows GUI Enhancer

## Developer Productivity



**Object List+**  
Encyclopaedia Browsing



**Assistants**  
Developer Productivity Tools



**genIE**  
Direct Ency Editing & Plug-ins

# Release 8.6



▲ March 2015

▲ Uses Gen 8.5 runtimes

▲ WebCR Enhancements

▲ Multiple tabs

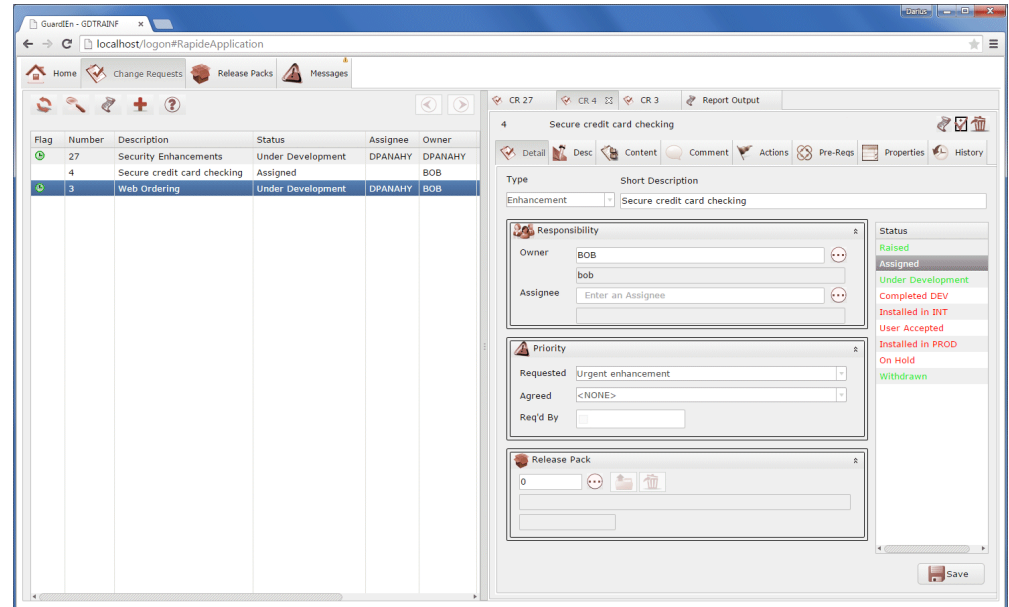
▲ System Updating

▲ Task Assistant

▲ pathvIEW

▲ Impact Wizard - Add Attribute analysis

▲ pathvIEW Baselining



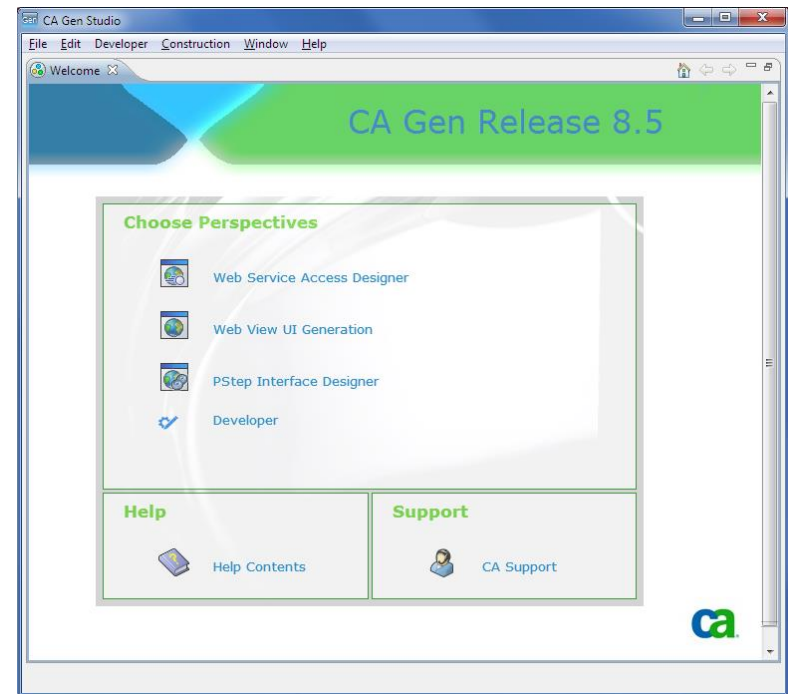
# Rapide



- ▲ Many enhancements and new features
  - ▲ Block Mode Option
  - ▲ Editable listboxes
  - ▲ Multiple instance tabs
  - ▲ Drag and Drop
  - ▲ Improved performance
  - ▲ and much more...
- ▲ First customer systems implemented into production
  - ▲ GUI to Web Conversion
  - ▲ Block Mode to Web Conversion
  - ▲ Enhanced Web UI project

# Gen Studio

- ▲ First provided by CA in Gen 8.0
- ▲ Based on Eclipse
- ▲ Foundation for toolset replacement
- ▲ Current Designers
  - ▲ PStep Interface Designer
  - ▲ Web Service Access Designer
  - ▲ WebView UI Generation



# Gen Studio Enhancements

---

- ▲ More details coming soon...
- ▲ Keep in touch or send an email requesting status updates to [darius.panahy@iet.co.uk](mailto:darius.panahy@iet.co.uk)