



Prague Technology Days #1

Welcome

Matt McLaughlin – May 2018 – 1.02

Prague Technology Days

May 30 - June 1, 2018







Dobrý Den. Hello.

Mike Webb – May 2018 – 1.02

Prague Technology Days

May 30 - June 1, 2018



For Informational Purposes Only

This presentation was based on current information and resource allocations as of **May 2018** and is subject to change or withdrawal by CA at any time without notice. Notwithstanding anything in this presentation to the contrary, this presentation shall not serve to (i) affect the rights and/or obligations of CA or its licensees under any existing or future written license agreement or services agreement relating to any CA software product; or (ii) amend any product documentation or specifications for any CA software product. The development, release and timing of any features or functionality described in this presentation remain at CA's sole discretion. Notwithstanding anything in this presentation to the contrary, upon the general availability of any future CA product release referenced in this presentation, CA will make such release available (i) for sale to new licensees of such product; and (ii) to existing licensees of such product on a when and if-available basis as part of CA maintenance and support, and in the form of a regularly scheduled major product release. Such releases may be made available to current licensees of such product who are current subscribers to CA maintenance and support on a when and if-available basis. In the event of a conflict between the terms of this paragraph and any other information contained in this presentation, the terms of this paragraph shall govern.

Certain information in this presentation may outline CA's general product direction. All information in this presentation is for your informational purposes only and may not be incorporated into any contract. CA assumes no responsibility for the accuracy or completeness of the information. To the extent permitted by applicable law, CA provides this presentation "as is" without warranty of any kind, including without limitation, any implied warranties or merchantability, fitness for a particular purpose, or non-infringement. In no event will CA be liable for any loss or damage, direct or indirect, from the use of this document, including, without limitation, lost profits, lost investment, business interruption, goodwill, or lost data, even if CA is expressly advised in advance of the possibility of such damages. CA confidential and proprietary. No unauthorized copying or distribution permitted.

Prague Technology Centre (PTC)



Mike Webb
PTC Site Lead

History

Office Opened 1998

PTC established 2005

600 Total Staff

400 in R&D

300 in Mainframe

We speak your language



Mainframe Customer Advisory Board – Prague FY'18

CUSTOMER ADVISORY BOARD – STRATEGIC ENGAGEMENT AND VALUED PARTNERSHIP



PTC in Numbers

300 Mainframers

Average age 35

6% Attrition

13% Women

PTC CA Mainframe Products

DB2 Performance Tools

DB2 Backup & Recovery Tools

IMS Tools

CA Spool

**View/Deliver
Output Management**

**Webviewer
Output Management**

**ESP
Workload Automation**

**Vantage
Storage Management**

Mainframe Software Manager (MSM)

**MICS
SMF performance reporting**

**Mainframe Application Tuner
Performance Tool**

**Dynamic Capacity Intelligence
SLA & MLC Optimisation**

**SymDump
Test Diagnostics**

**Verify
Test Automation**

**FileMaster
Data Management System**

**Brightside
Enabling DevOps**

**Intertest
Debugger**

**Dev Environment for Z
Eclipse IDE**

**Aion
Business Rules Expert**

**Easytrieve
Report Generator**

**Application Lifecycle Conductor
Enabling DevOps**

**Librarian
SCM**

**MFaaS
Automation**

**Endevor
SCM**

New Agile Office Space



STEM

1,344
Students
reached

665
Female
students
reached

51
Employee
volunteers



Corporate Social Responsibility Program



Employees have 5 volunteer days/year
During last 5 years organized more than 70 events
Tracked more than 5000 volunteer hours



Organizations:

Charity: Children's home in Pyšely, School for hearing impaired children, Institut for people with mental disabilities in Brandýs nad Labem, Dog shelters

Enviromental: Center for environmental education Toulcuv Dvur, Czech society for environmental protection, Rescue station for wildlife



reserved.



TECH
*Spar***X**



HYPERLEDGER

BLOCKCHAIN TECHNOLOGIES FOR BUSINESS

PRAQUE

Call for Speakers Now Open



Share your experience. Be the teacher. Enhance your resume.

Register your session today! Learn more: ca.com/caworld





Prague Technology Days May 30 - June 1

68 Sessions 55+ Hours 4 Tracks

Intense Mainframe Edutainment

Meet the Teams who Develop the Products You Use



DevOps CA FileMaster, CA InterTest, CA Endevor, CA DEz (Development Environment for z), CA SymDump, CA ALC (Application Lifecycle), CA Dynamic Capacity Intelligence, CA Mainframe Application Tuner.

DB DB2 Backup and Recovery from CA, CA DB2 Utilities, CA SYSVIEW for DB2, CA PRF, IMS Tools from CA.

ITOps CA Vantage, CA Automation Point, CA Automation ESP Edition, CA View/Deliver, Webviewer.

Mainframe Mainstays CA Easytrieve, CA Telon, CA MICS.

Topics ranging from API to zOSMF,
Performance Tuning to Container
Pricing, Technical to Strategic to
What's Next

Leave Prague with **Good Memories,**
Great Connections and Best
Practices



Thank You.



Mike Webb

VP Software Engineering, CA Technologies

Mike.webb@ca.com



@cainc



in

What's Up with Mainframe? Our Innovations

Jean-Louis Vignaud – May 30th – 1.0

Prague Technology Days

May 30 - June 1, 2018

For Informational Purposes Only

This presentation was based on current information and resource allocations as of **May 2018** and is subject to change or withdrawal by CA at any time without notice. Notwithstanding anything in this presentation to the contrary, this presentation shall not serve to (i) affect the rights and/or obligations of CA or its licensees under any existing or future written license agreement or services agreement relating to any CA software product; or (ii) amend any product documentation or specifications for any CA software product. The development, release and timing of any features or functionality described in this presentation remain at CA's sole discretion. Notwithstanding anything in this presentation to the contrary, upon the general availability of any future CA product release referenced in this presentation, CA will make such release available (i) for sale to new licensees of such product; and (ii) to existing licensees of such product on a when and if-available basis as part of CA maintenance and support, and in the form of a regularly scheduled major product release. Such releases may be made available to current licensees of such product who are current subscribers to CA maintenance and support on a when and if-available basis. In the event of a conflict between the terms of this paragraph and any other information contained in this presentation, the terms of this paragraph shall govern.

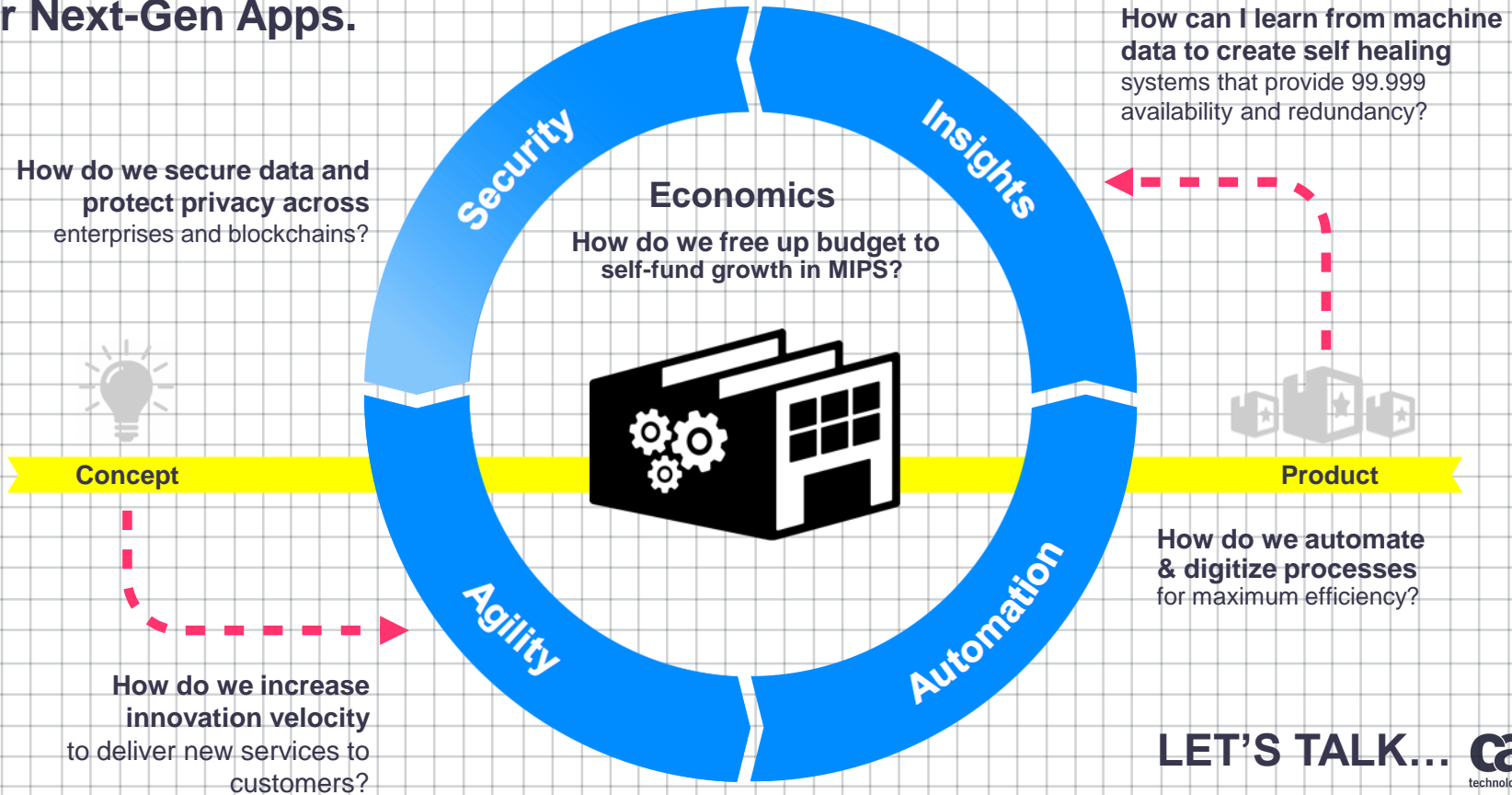
Certain information in this presentation may outline CA's general product direction. All information in this presentation is for your informational purposes only and may not be incorporated into any contract. CA assumes no responsibility for the accuracy or completeness of the information. To the extent permitted by applicable law, CA provides this presentation "as is" without warranty of any kind, including without limitation, any implied warranties or merchantability, fitness for a particular purpose, or non-infringement. In no event will CA be liable for any loss or damage, direct or indirect, from the use of this document, including, without limitation, lost profits, lost investment, business interruption, goodwill, or lost data, even if CA is expressly advised in advance of the possibility of such damages. CA confidential and proprietary. No unauthorized copying or distribution permitted.



Key takeaways

- We are innovating
 - **Mainframe Economics** with Data Capacity Intelligence
 - **Mainframe Insights** with Mainframe Operational Intelligence
 - **Mainframe Security** with Data Content Discovery & Compliance Event manager, TAMz
 - **Future Innovations:**
 - MRI,
 - Mainframe as a Service,
 - Brightside,
 - Git Front End to Endeavor,
 - Self-service provisioning of Development tooling,
 - Blockchain,
 - Etc.

THE MODERN SOFTWARE FACTORY For Next-Gen Apps.

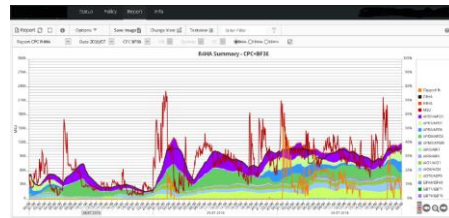


LET'S TALK... **ca**
technologies

Remove Uncertainty From Mainframe License Cost Pricing & Control Budgeting

8% cost savings out of box and
20% MSU use reduction with
capacity optimization

New: CA Dynamic
Capacity Intelligence



Improve SLA management
for critical workloads



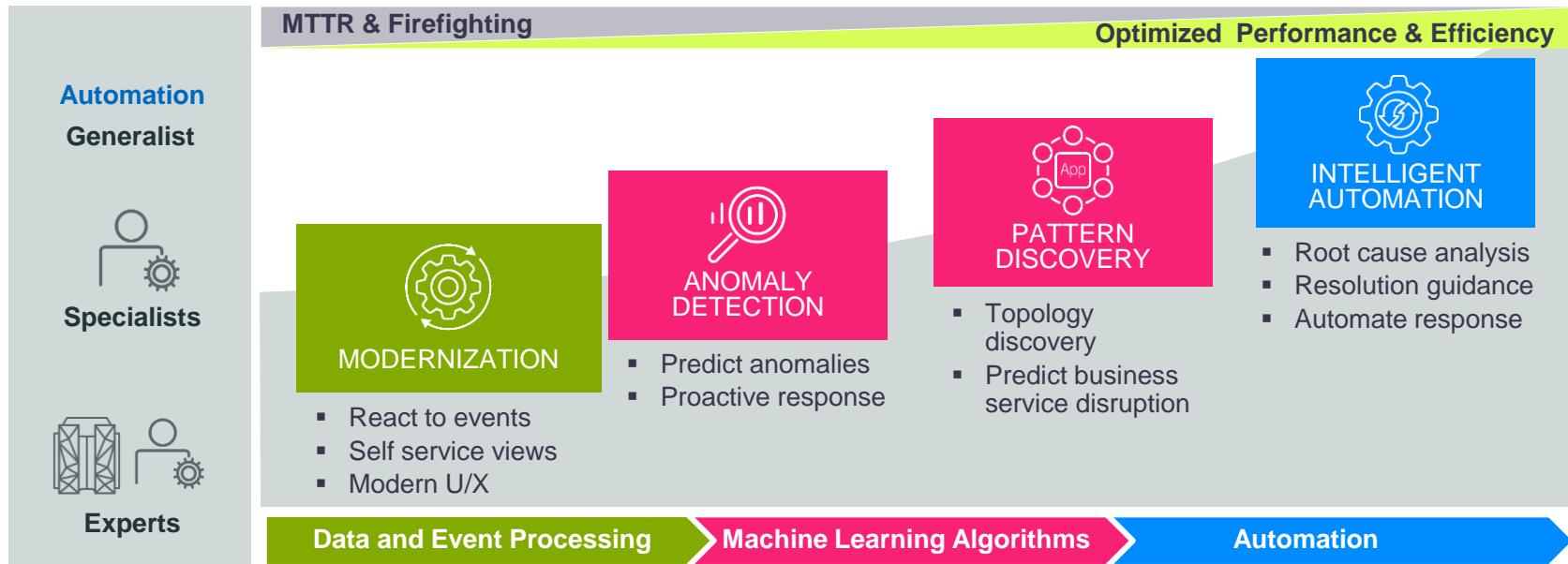
Automatically balance
mainframe workloads



Avoid unplanned peaks in
capacity usage and MLC cost

A **million service units (MSU)** is a measurement of the amount of processing work a computer can perform in one hour. The term is most commonly associated with IBM **mainframes**. It reflects how IBM rates the machine in terms of charging capacity.

How can we learn from **machine data** to create **self-healing** systems that support SLA's?



How Do We Secure Data and Protect Privacy Across Enterprises And Blockchains?

New Mandates

May 25th, 2018 GDPR

€20M fine for single incident or 4% of global annual turnover for the preceding year



How Do We **Reduce insider threat** and **Simplify Audits** when managing privileged Users/IDs?

According to 2016 Verizon Data Breach report,
over 77% of data breaches derive from internal sources

Eliminate

Privileged credential sharing
Elevate/Demote existing user IDs

Alert

Be alerted in real-time of
suspicious activities through
integration with Splunk

Simplify audit
Meet regulatory requirements
Reduce insider threats
Reduce admin costs

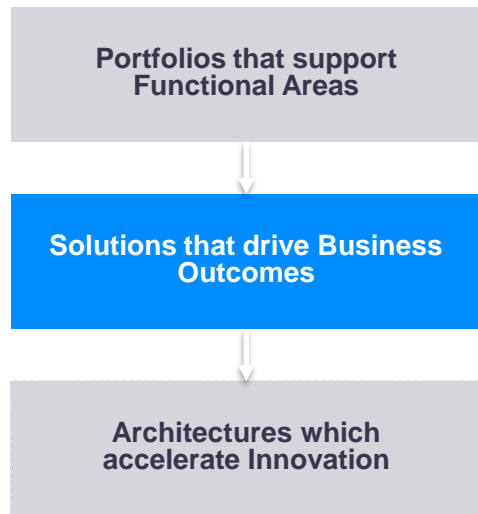
Secure

Validate elevation request
Check Service Desk origin

Audit

Auditing and forensics on all
activity performed by identities in
their privileged state

CA Mainframe Portfolio Directions: Architectural Shift to Services



SELF SERVICE

Operational Intelligence as a Service

Application Development as a Service

Data Security as a Service

CA Mainframe Resource Intelligence

An **Automated Assessment Solution** to help you **reduce cost** and guide you on digital transformation

In Medicine



Patient – initial symptom



Run, scan, and interpret based on years of training, tests, benchmarks and best practices



Get **medical report**



Get a Diagnoses for **better health outcomes**

In Mainframe

1

Define the **area/domain** to scan (economics, security etc.)

2

Upload data and **run scan**

3

Get an **analysis report**

4

CA Recommendations for **better business outcomes**

How It Works

Scan



Using the MRI Discovery Toolkit, easily scan and upload only the data needed to conduct the analysis you want for your mainframe environment.

Assess



Leverage CA's automation, AI, machine learning, and 30+ years of best practice expertise to analyze and understand possible savings and improvements.

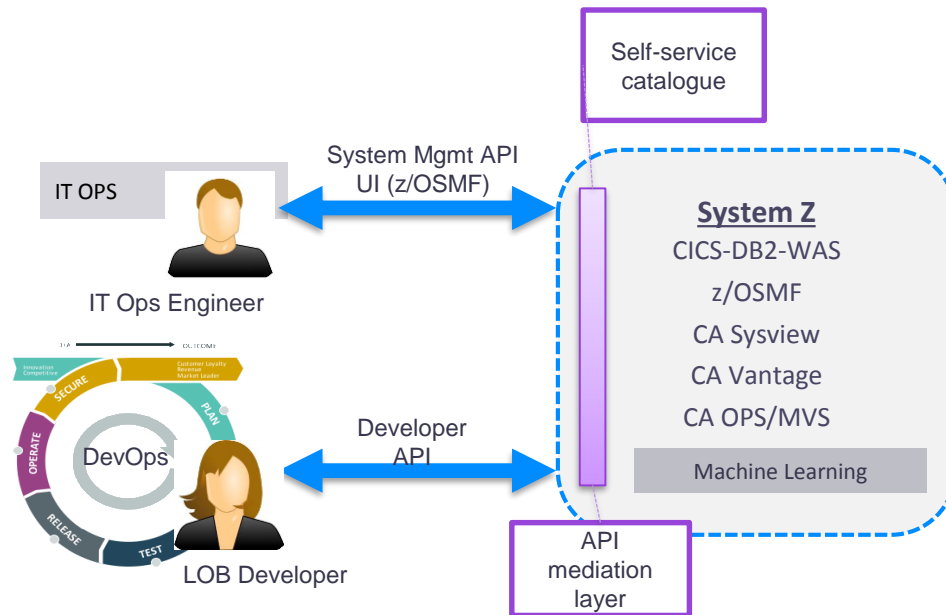
Report



Easy to use reports are generated in days, not months. Gain actionable recommendations to guide you in optimizing and maximizing the efficiency of your mainframe environment.

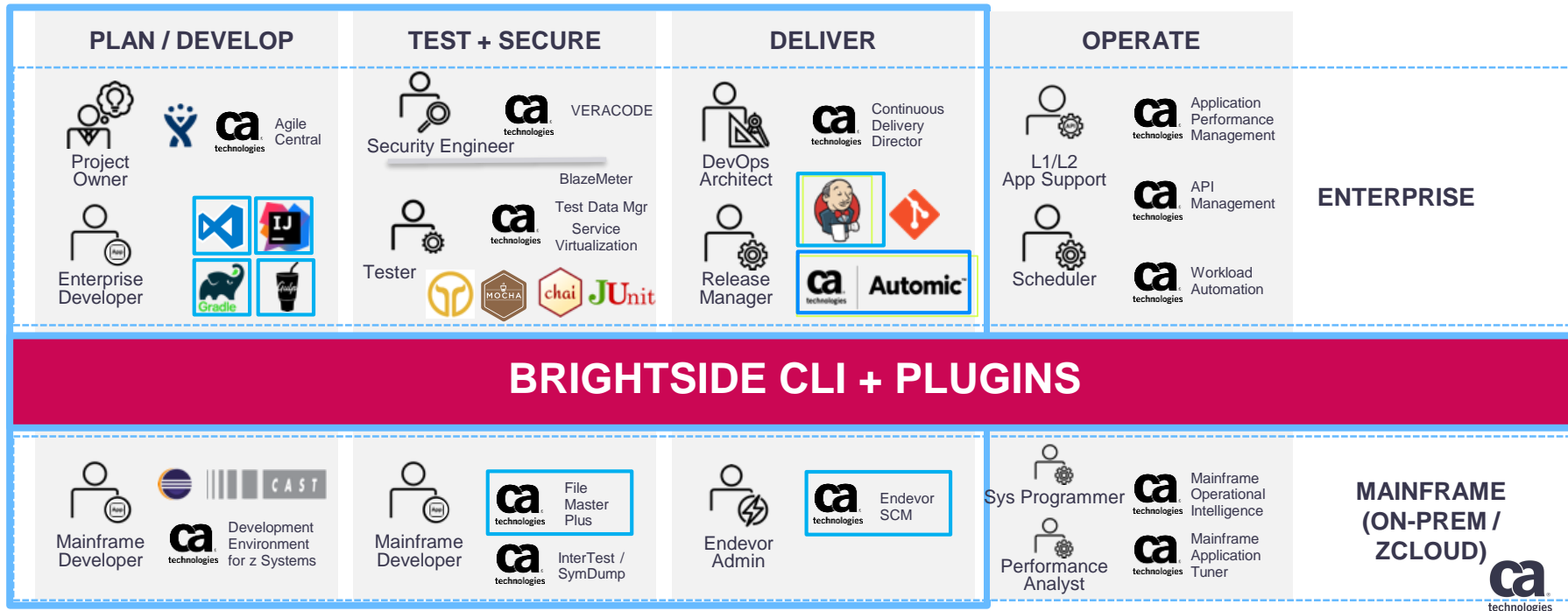
Mainframe as a Service: Just Another Platform

- MFaaS: Collection of DevSecOps services defining the future of how developers and operations professionals experience the mainframe
- MFaaS makes the mainframe “no different from other platforms” (i.e. capabilities like AWS on x86). Easier to use, easier to trial usage, it drives the ability to consume more services, increases the value our clients obtain with the price paid, and allows higher automation.



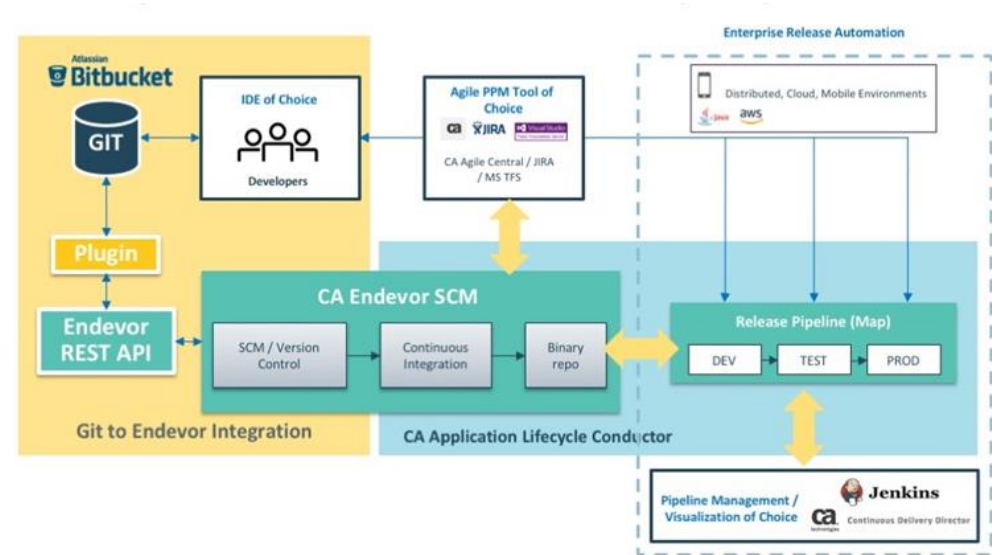
Project Brightside

Opens IBM Z to a new generation of developers



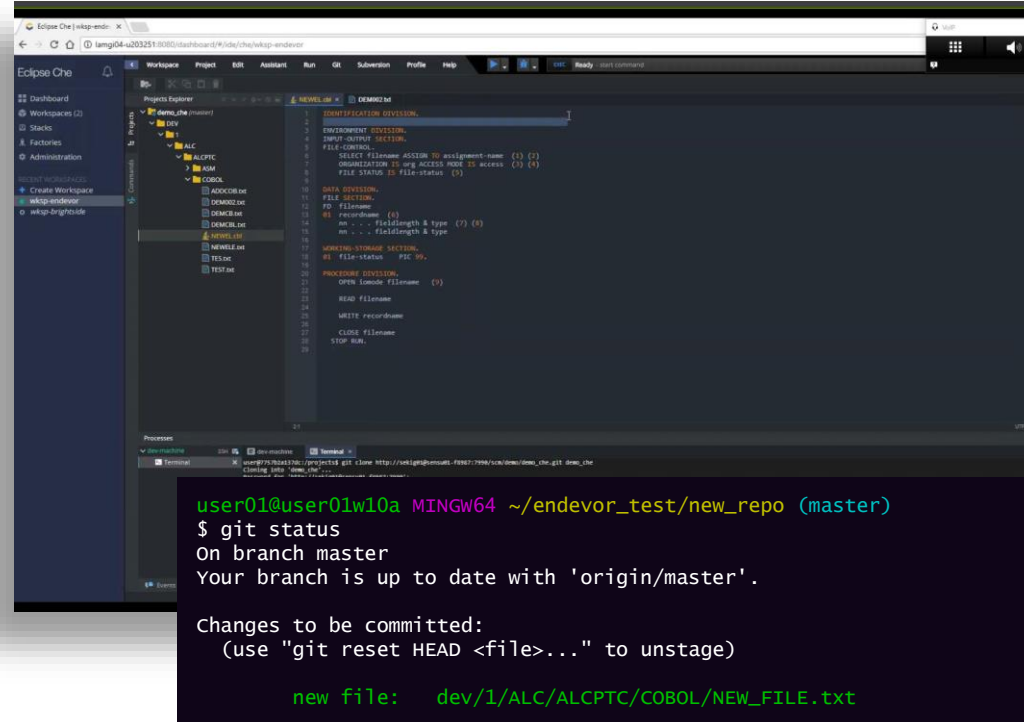
Mainframe development with GIT and Endevor

- Attract the new generation of developers to mainframe
 - easy on-board, unique skill-set
- Support common practices for end-to-end enterprise application development
 - Mobile to Mainframe
- Offer similar developer experience across all platforms
 - Distributed, Cloud, Mobile, Mainframe
- Leverage popular, proven, collaboration practices
- Enterprise GIT through Bitbucket integrated with Endevor build and life cycle management



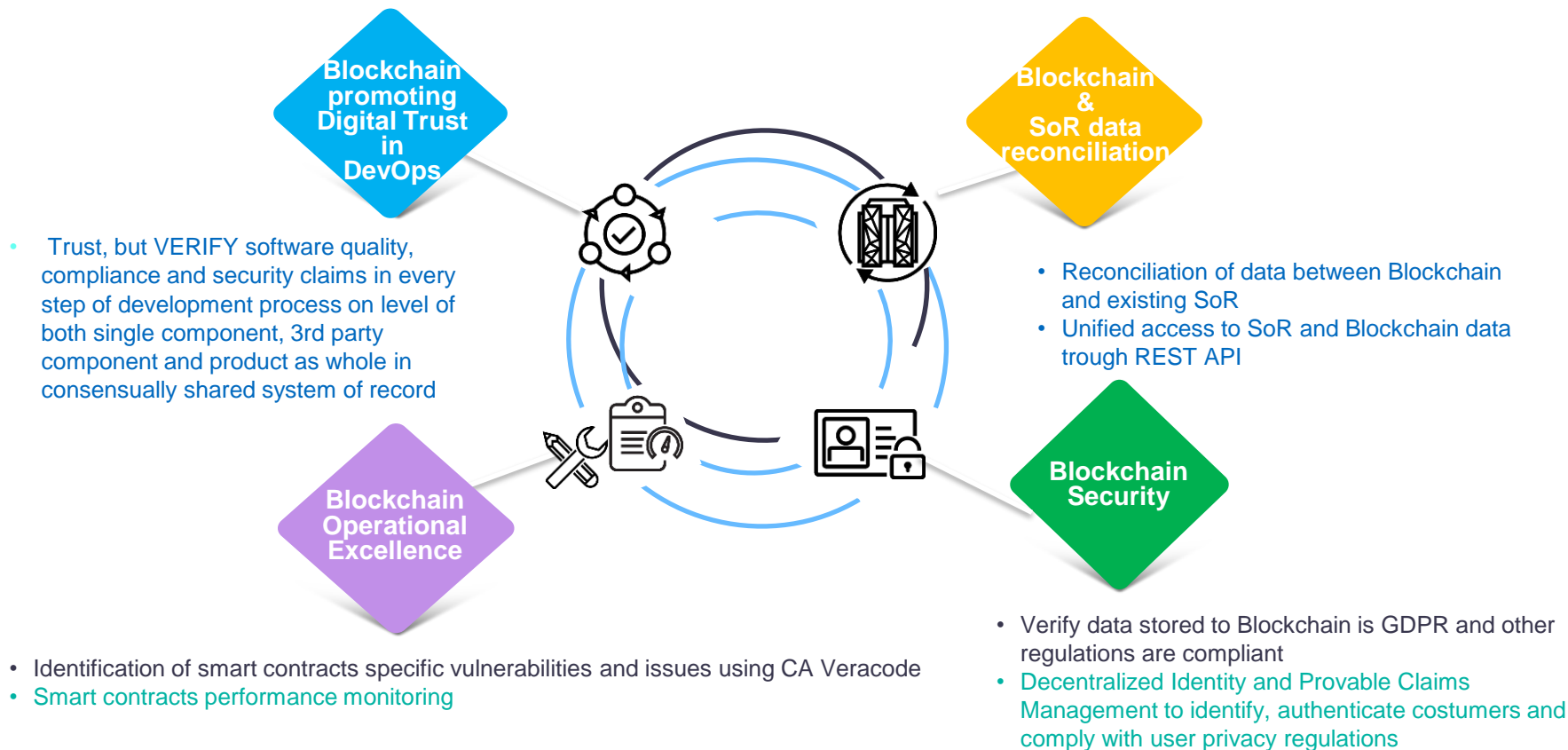
Self provisioning Development tooling

- Quickly provision the tools needed to develop and test mainframe applications
 - Cloud, hybrid, or on-premise
- Integration of Brightside CLI with interactive development tooling
 - easy on-board, cross platform skill-set
- Tool Containers for of cross platform and multiple language development
- Integration with other IDE's (eg: Visual Studio)



CA Blockchain Solution Areas (Dev-in-Motion)

Future





Thank You.



in

Call for Speakers Now Open



Share your experience. Be the teacher. Enhance your resume.

Register your session today!

Learn more: ca.com/caworld

© 2018 CA. ALL RIGHTS RESERVED.

