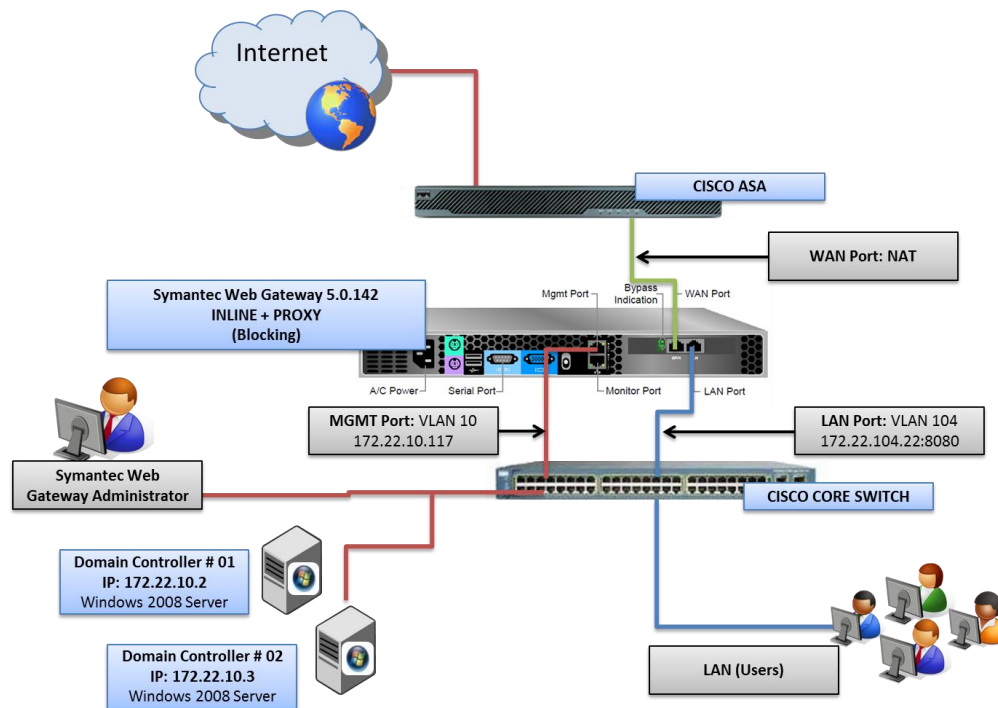


## Scenario:



The client needs to provide security for web browsing of all its users, using content filtering policies and URL Filtering, as well as anti-malware protection.

Need the solution has proxy functionality in order to optimize its output to the Internet, as well as authenticate users can surf the web.

## Issue

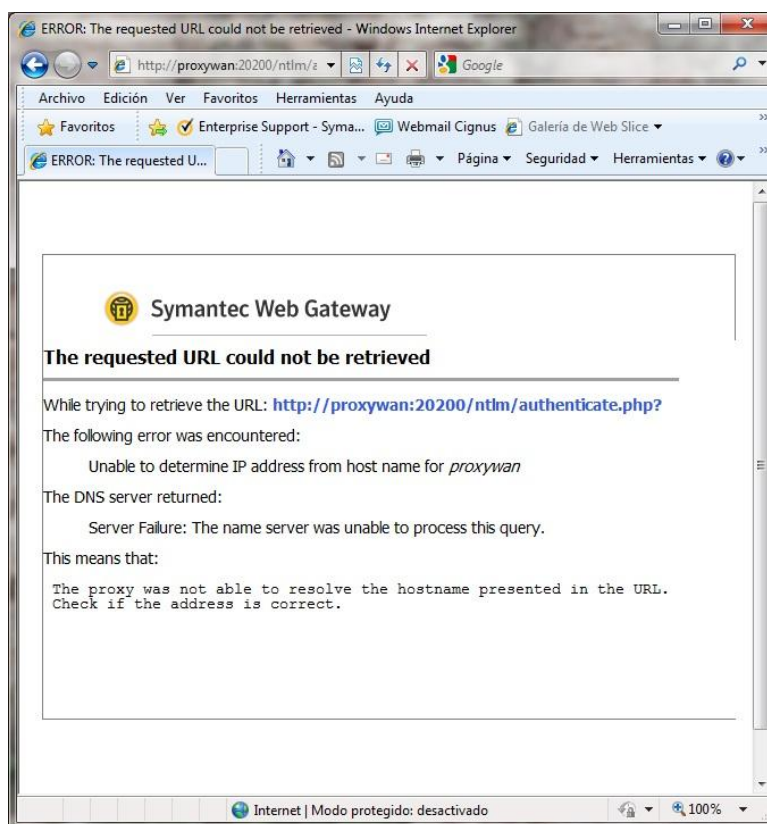
There are problems to authenticate users who are not in the domain. The best way is to authenticate on the proxy to enable or web browsing.

It set up a Web Gateway Symantec INLINE + PROXY Mode with NTLM integration. The allocation of filtering policies to different OUs, users and range of IPs are assigned correctly.

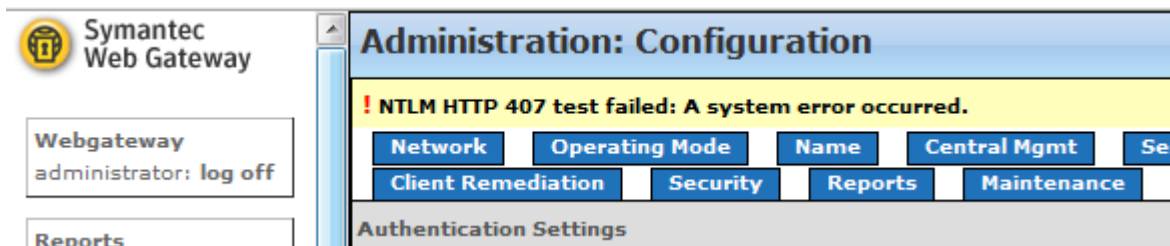
But to strengthen the authentication with authentication policy, this does not work for PCs that are not within the domain. In no time, all users are seeking their window displays with your user authentication domain, providing access but applying policies.

The biggest problem is with the PCs that are not in the domain, which are external auditors which are restricted from accessing network resources. But they must provide access to different web sites. While in these IPs reports appear, as well as all authenticated users' browsing, the greater concern is that they are requesting authentication.

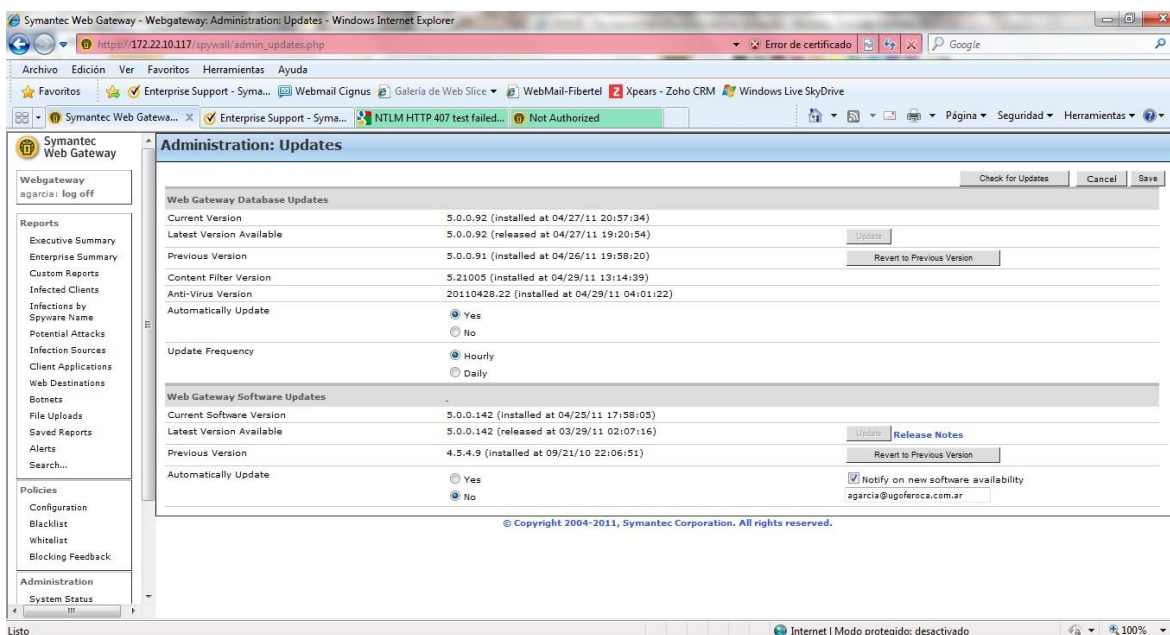
By testing the NTLM settings within Administration> Configuration> Authentication> NTLM Test (HTTP 401), confirms that there is successful communication with the LDAP server, but when you click on the authentication test, it can not resolve the URL <http://PROXYWAN:20200/ntlm/authenticate.php>?. PROXYWAN is the name that was assigned to **Inline Interface**, which created a DNS record to point at the IP address 172.22.104.22. Similarly the problem persists. NSLOOKUP was conducted to PROXYWAN and resolves without problems.



When you click the Test button NTLM (Proxy 407), the **error! NTLM HTTP 407 failed test:**  
**A system error occurred.**



## More Information



Symantec Web Gateway - Webgateway: Policies: Configuration - Windows Internet Explorer

https://172.22.10.117/spywall/policy\_conf.php

Archivo Edición Ver Favoritos Herramientas Ayuda

Favoritos Enterprise Support - Syma... Webmail Cignus Galería de Web Slice WebMail-Fibertel Xpears - Zoho CRM Windows Live SkyDrive

Symantec Web Gateway Enterprise Support - Syma... NTLM HTTP 407 test failed... Not Authorized

Página Seguridad Herramientas

### Symantec Web Gateway

Webgateway  
agencia: log off

Reports

- Executive Summary
- Enterprise Summary
- Custom Reports
- Infected Clients
- Infections by Spyware Name
- Potential Attacks
- Infection Sources
- Client Applications
- Web Destinations
- Botnets
- File Uploads
- Saved Reports
- Alerts
- Search...

Policies

- Configuration
- Blacklist
- Whitelist
- Blocking Feedback

Administration

- System Status

### Policies: Configuration

**Policies** Services

☒ Enable Policy Management  
Request changes to Content Filter classification [Cancel](#) [Save and Activate Changes](#) [Create a New Policy](#)

Is this site safe? Check with Norton Safe Web:  [Check It](#)

Displaying 9 of 9 policies

Policy Name	Type	Affected Work Groups	Description	Last Modified		
Autenticación	Authentication	All Computers		04/29/2011 12:49		
Dispositivos Móbiles		172.22.131.51-172.22.131.52		04/28/2011 15:03		
Sube		192.6.222.10-192.6.222.50		04/28/2011 14:57		
Yanina Ferrante		User yferrante		04/28/2011 09:19		
RRHH		GQSistemas Group		04/28/2011 09:36		
Administración y Finanzas		GQSistemas Group		04/28/2011 09:33		
RRII		GQSistemas Group		04/28/2011 09:28		
Sistemas		GRFS_Sistemas Group		04/29/2011 09:38		
Política Global		All Computers		04/28/2011 09:42		

© Copyright 2004-2011, Symantec Corporation. All rights reserved.

Internet | Modo protegido: desactivado 100%