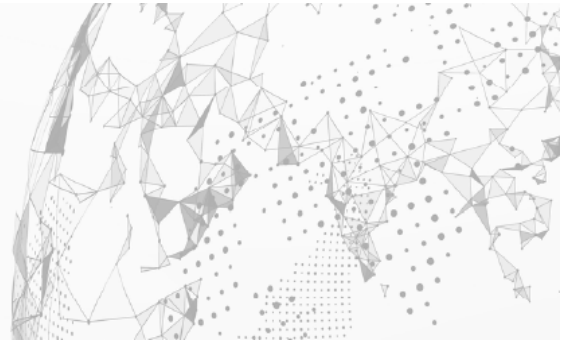


General Availability Announcement



July 2022

To: Cross-Enterprise Application Performance Management (Cross-Enterprise APM) Customers
From: Broadcom's SYSVIEW® Performance Management (SYSVIEW) Product Team
Subject: General Availability Announcement for SYSVIEW 17.0

On behalf of Broadcom, we appreciate your business and the opportunity to provide you with high-quality, innovative software and services. As part of our ongoing commitment to customer success, we regularly release updated versions of our products. **Today, we are pleased to announce that SYSVIEW 17.0 is now available.**

SYSVIEW 17.0 uses a Continuous Delivery (CD) release model. The CD model provides new product features as individual PTFs that are separate from product fixes. The CD approach allows you to select which service stream elements you want to apply.

You are not required to apply all new features in the CD release model; however, we strongly recommend that you stay current with new features and maintenance. SMP/E dependencies still apply when selectively applying maintenance.

New features for SYSVIEW 17.0 include:

SYSVIEW Essentials Configuration

SYSVIEW Essentials is a lightweight configuration of SYSVIEW that is available in 17.0. The configuration is designed to assist in the management of product installs, maintenance, and Common Component Service, as well as the interaction with customer support for other Broadcom products. Subsystem monitoring, data collection and exception processing is not enabled in this configuration. Current SYSVIEW customers have all the capabilities found in the SYSVIEW Essentials. No additional steps or configuration changes are needed.

Unified Data Collection

Unified Data Collection improves the ways in which SYSVIEW users create, maintain, and view data collection metrics and exception definitions. Through Unified Data Collection, exception definitions have been standardized across all SYSVIEW components.

Data collection metrics are now formatted to display as longer and more descriptive metric names. The new formatting allows for increased understanding of what a given metric is monitoring.

With the combination of component-specific commands into unified commands, users can create, maintain, and display definitions from one unified interface.

MQ Version Support and Enhanced SYSVIEW MQ Channel Data Collection

Support for MQ 9.3 is available with this release.

SYSVIEW MQ channel data collection was enhanced to collect data at the channel level instead of the instance level.

SYSVIEW aggregates all channel instance metrics for a given channel into a single resource, which is the channel that name. The enhancement introduces new metrics and support for 32-character metric names.

We also encourage you to visit the SYSVIEW product information page at [Support](#) and [Tech Docs](#).

You can download your copy of SYSVIEW 17.0 online at [Support](#) where you can also utilize the case management system. To install your product, follow the installation procedures for your product at [Tech Docs](#). If you have any questions or require assistance, contact [support](#).

Should you need any assistance in understanding these new features, or implementing this latest release, our implementation services partners can help. Please contact your local account representative for more information on how they can help. To connect, learn, and share with other customers, join and participate in our [SYSVIEW Community](#).

For a list of Mainframe Education courses recommended by role, please visit the [Learning Paths](#) and select the desired product. We update courses based on functional impact as well as high-demand; therefore, courses created from previous releases may apply to the current release.

Please review our End of Service / End of Life Policy within the [Broadcom Software Maintenance Policy Handbook](#).

Thank you again for your business.