

## DS 7.1 Jobs

### Go to Automation/Production

*From ST-DEL-2057*

This pair of jobs reboots to the opposite environment if necessary, but does NOT reboot to the same environment.

ConfigNote Last Modified:10/05/2011  
Screenshot Taken By:sfaucher

## Go to Automation Job

From ST-DEL-2057

Job screen capture.

**Go to Automation**

Tasks ▾ Jobs and Tasks ▾ ATLLP ▾ Tools ▾ Go to Automation

**Go to Automation**  
Reboot to Automation if in Production, otherwise stay in Automati

**This job is used by the following job and policies: Build Firm Image,**

**Jobs / Tasks**

New ▾ Add Existing

Job Start

- Run "If in WinPE Preboot return 100"
- If "If in WinPE Preboot return 100" Return Value equals 100
- Else
- Run "Reboot To Automation"
- Stop

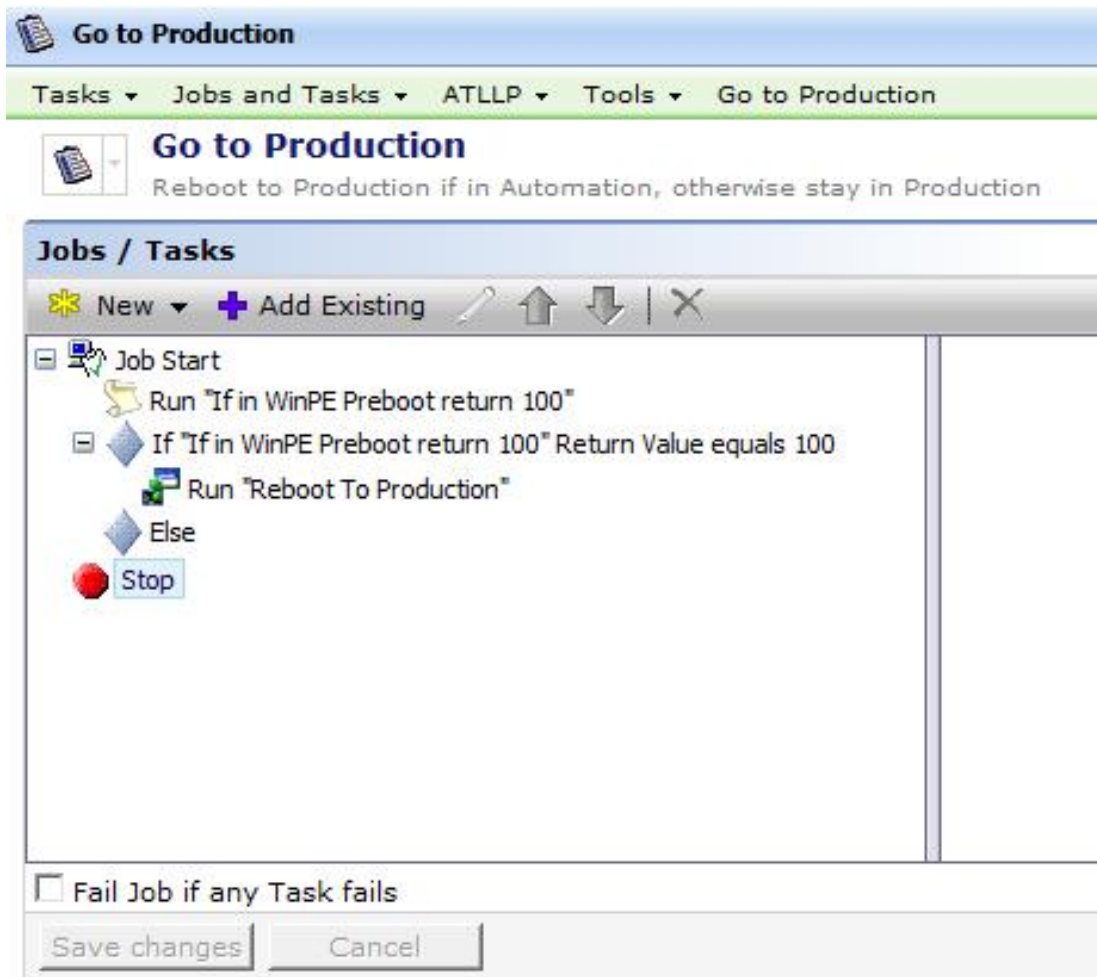
☐ Fail Job if any Task fails

Save changes Cancel

## Go to Production Job

From ST-DEL-2057

Job screen capture:



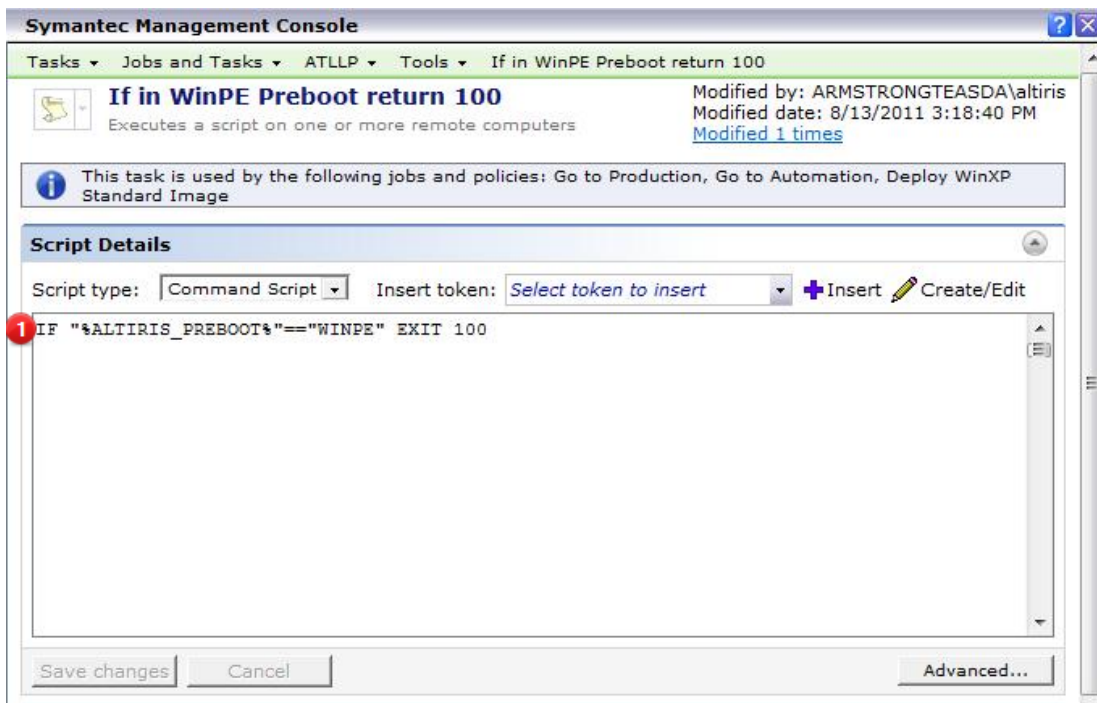
ConfigNote Last Modified:10/05/2011  
Screenshot Taken By:sfaucher

## DS 7.1 Jobs

### If in WinPE Preboot return 100

From ST-DEL-2057

Run script task



ConfigNote Last Modified:10/05/2011

Screenshot Taken By:sfaucher

1

ALTIRIS\_PREBOOT is an environment variable available to any shell in 7.1 WinPE automation. It is not present in production.

## Reboot to Automation Task

From ST-DEL-2057

Reboot to Automation task screen capture:

**Reboot To Automation**

Tasks > Jobs and Tasks > ATLLP > Tools > Reboot To Automation

**Reboot To Automation**  
Changes the boot environment of a computer.

**Reboot To**

Select the boot environment.

☒ **Automation**  
Boot environment: Microsoft Windows PE™ or Linux PE

☐ **Production**

☐ **PXE:**

ConfigNote Last Modified:10/05/2011  
Screenshot Taken By:sfaucher

## Reboot to Production Task

From ST-DEL-2057

Reboot to Production task screen capture:

The screenshot shows the 'Reboot To Production' task configuration window. At the top, there is a blue header bar with the title 'Reboot To Production'. Below this is a green navigation bar with tabs: 'Tasks', 'Jobs and Tasks', 'ATLLP', 'Tools', and 'Reboot To Production'. The main content area has a title 'Reboot To Production' and a description 'Changes the boot environment of a computer.' Below this is an information box stating 'This task is used by the following jobs and policies: Build Firm Image, Image, Deploy WinXP Standard Image'. The 'Reboot To' section contains the instruction 'Select the boot environment.' and three radio button options: 'Automation' (with subtext 'Boot environment: Microsoft Windows PE™ or Linux PE'), 'Production' (which is selected), and 'PXE' (with two dropdown menus, the first showing 'Select an image'). At the bottom are 'Save changes' and 'Cancel' buttons.

**Reboot To Production**

Tasks ▾ Jobs and Tasks ▾ ATLLP ▾ Tools ▾ Reboot To Production

**Reboot To Production**  
Changes the boot environment of a computer.

**Information** This task is used by the following jobs and policies: Build Firm Image, Image, Deploy WinXP Standard Image

**Reboot To**

Select the boot environment.

☐ Automation  
Boot environment: Microsoft Windows PE™ or Linux PE

☒ Production

☐ PXE:

ConfigNote Last Modified:10/05/2011  
Screenshot Taken By:sfaucher