



Confidence in a connected world.

Symantec™ Endpoint Protection 12

Evaluation - Architecture - Implementation

Customer Perspective

(Large New York Based Financial Institution)

Agenda



- 1 Information Security's Challenges
- 2 Symantec Endpoint Protection 12 Overview
- 3 Architecture, Deployment
- 4 Q & A

Information Security's Challenges



**Spyware
Malware**

**Polymorphic
Worms**

**Workstations
Servers**

**Zero-Day
Vulnerabilities**

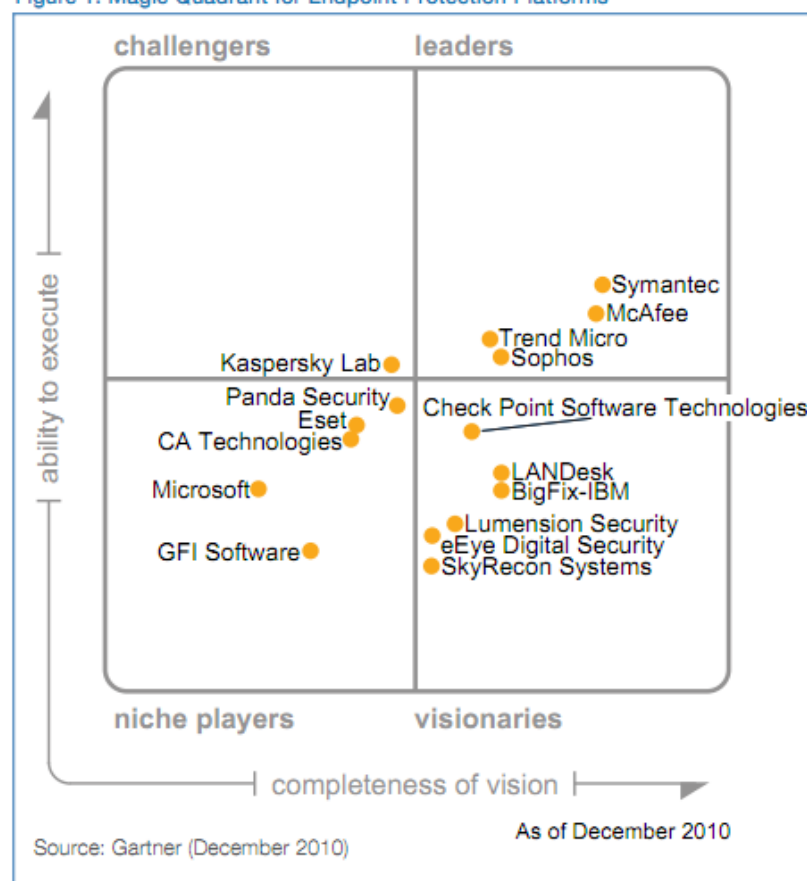
**Stale
Signatures**

Traditional Anti-Virus isn't Good Enough Anymore



- Rapidly Evolving Threats
- Sophisticated Attacks
- Virus/Trojan/Worm Variants
- Reputation
- Bot Networks
- End Users

Figure 1. Magic Quadrant for Endpoint Protection Platforms






Confidence in a connected world.

Symantec Endpoint Protection 12

“The Clear Choice”


The Deciding Factors




SECURE

Symantec™ Endpoint Protection 12.0

- Antivirus and antispyware protection
- Firewall
- Intrusion prevention
- Application and device control

 #1 in worldwide secure content and threat management (IDC 2006)

 Leader in endpoint protection platforms (Gartner 2007)

- Download Insight
- Real-Time Heuristics
- Browser IPS
- SONAR 3
- Increased Performance
- Centralized Management
- Built for Virtualization
- Existing Symantec Customer



Confidence in a connected world.

Architecture, Deployment

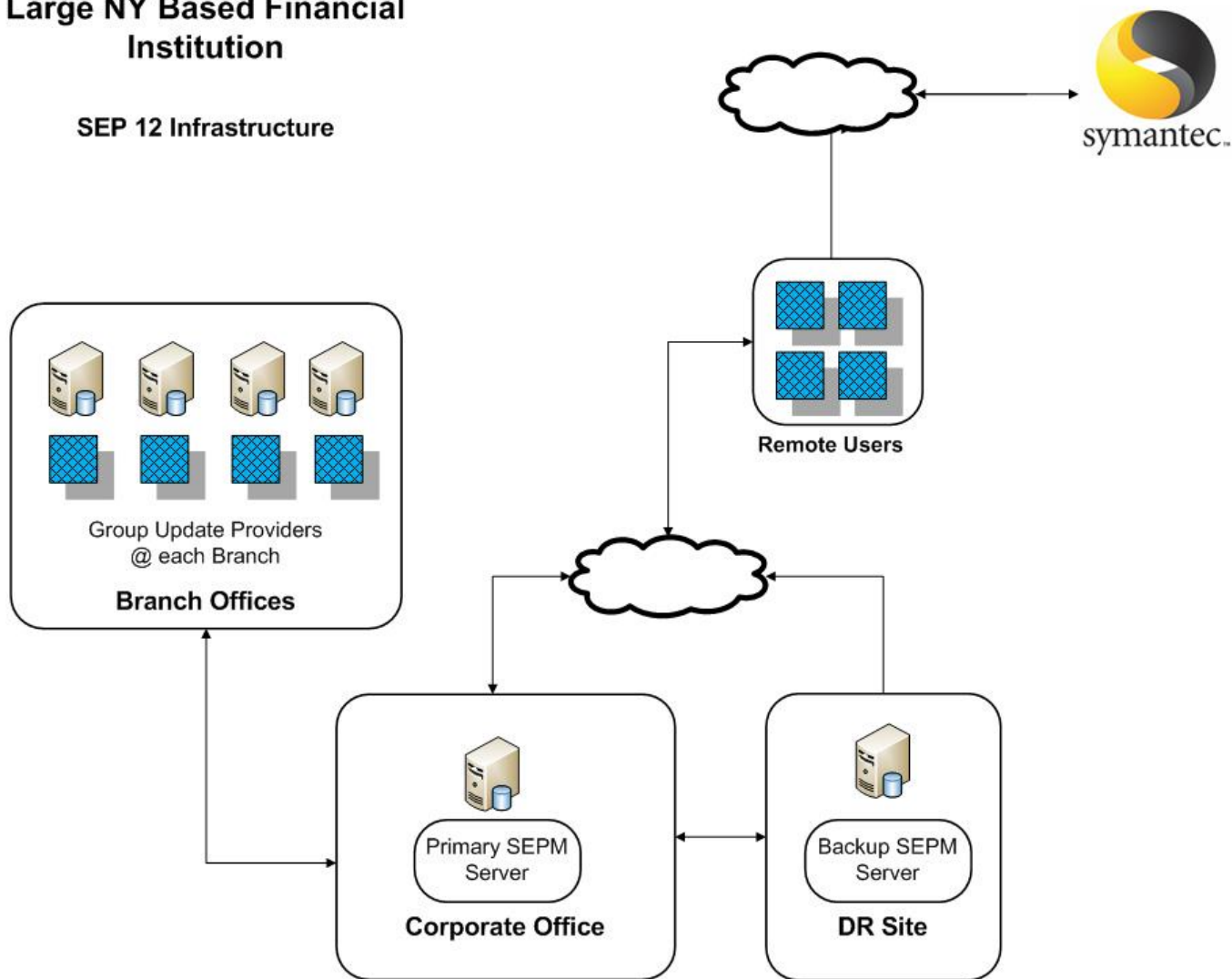
Corporate Offices, Branch Offices, Remote Users

Architecture



Large NY Based Financial Institution

SEP 12 Infrastructure



Deployment



- Business Unit Specific Policies
- Client Packages
- Deployed using SEPM & Third Party Software
 - Phased Approach
 - Remediation/Exception
 - Clean-Up
- Decommission of Competitive Product



Confidence in a connected world.

Q & A



Confidence in a connected world.

Thank You!