



# DinamiQs

## S.M.A.R.T

### Installation Guide

**© 2011 DinamiQs BV, The Netherlands**

**<http://www.dinamiqs.com>**

No part of this publication may be altered or amended without prior written consent by the owners. All information in this document applies to various products. These products and their copyrights and trademarks rest with their owners. SMART, DVS4VDI, Management Console and VirtualStorm are © and ™ DinamiQs. All images and artwork are © DinamiQs



## Introduction

In the world of VDI DinamiQs has set new standards for speed, efficiency and end-user experience. Part of the DinamiQs VDI stack is S.M.A.R.T., which has developed into a full fledged Desktop and Software management application.

The S.M.A.R.T. software helps end-users access those applications that they are entitled to. S.M.A.R.T. allows self-service and self-repair of these –packaged- applications.

Additional functionality, specifically for Fat Client environments is the automated deployment of new or updated applications to the end-user's workstation through the application template system in the DVS Management Console.

Once these templates are installed and through collaboration with the Active Directory, an end-user sitting down at any fat client end-point will automatically load their applications from the central VSA repository.

## Prerequisites

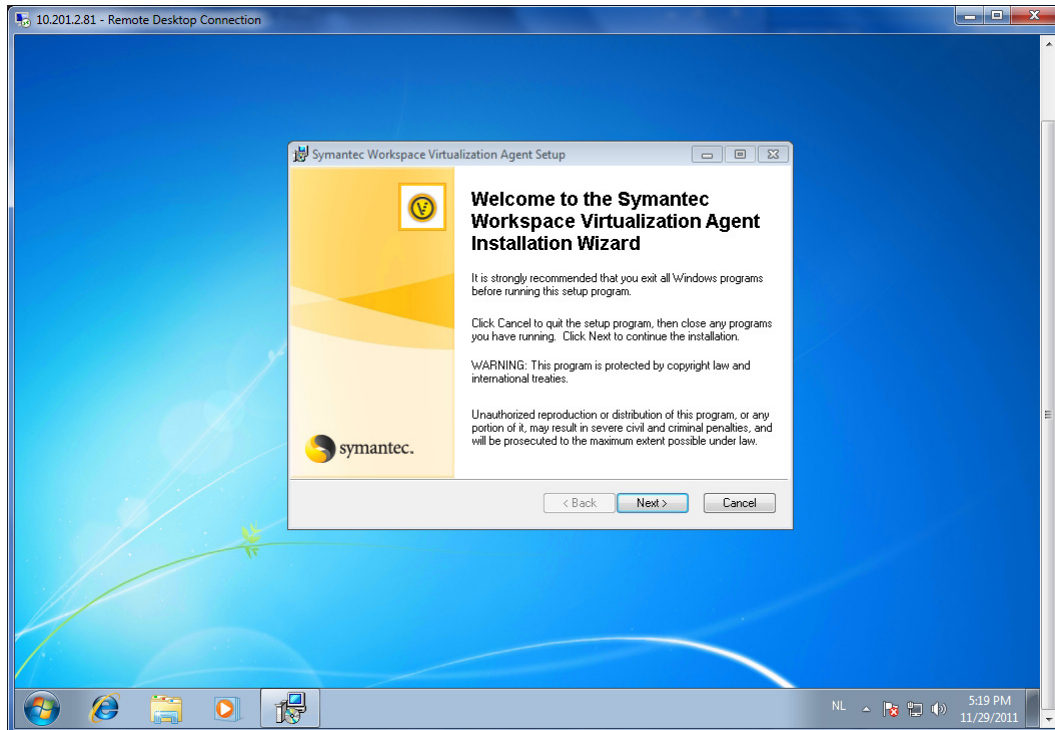
To take advantage of all the benefits of DVS S.M.A.R.T., Symantec Workspace Virtualization needs to be installed. All other prerequisites are combined into the DVS S.M.A.R.T. installer. If the installer sees that the prerequisites are not met, the installer will ask you to install these and it will facilitate an automated link to the correct version.

## Index

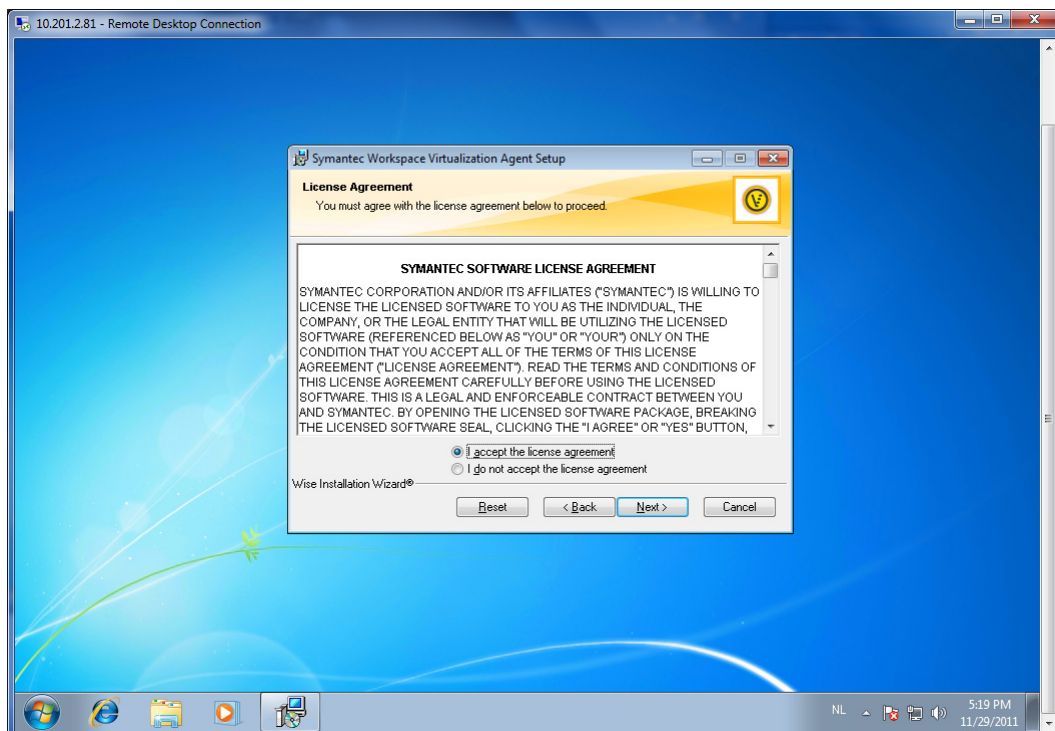
1 Install Symantec Workspace Virtualization.....	3
2: Install DinamiQs SMART.....	8
3: Configure SMART .....	12
3.1: SMART loads .....	15
4: Install the DVS SMART manager .....	17
4.1 Configure the DVS management console .....	21
4.2 DVS Users and DVS computers .....	24
4.2.0 Layers .....	24
4.2.1 Software .....	25
4.2.2 Services .....	26
4.3 DVS user admin.....	27

# 1 Install Symantec Workspace Virtualization

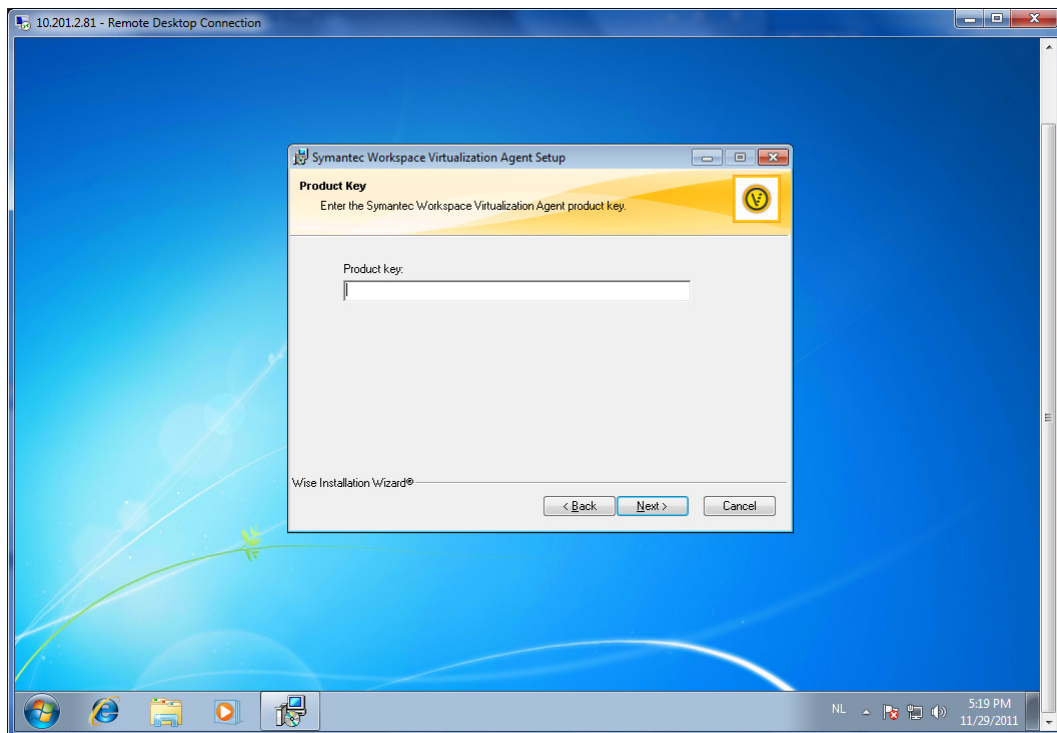
Make sure you are logged on as an administrator before you start the installation of SWV.



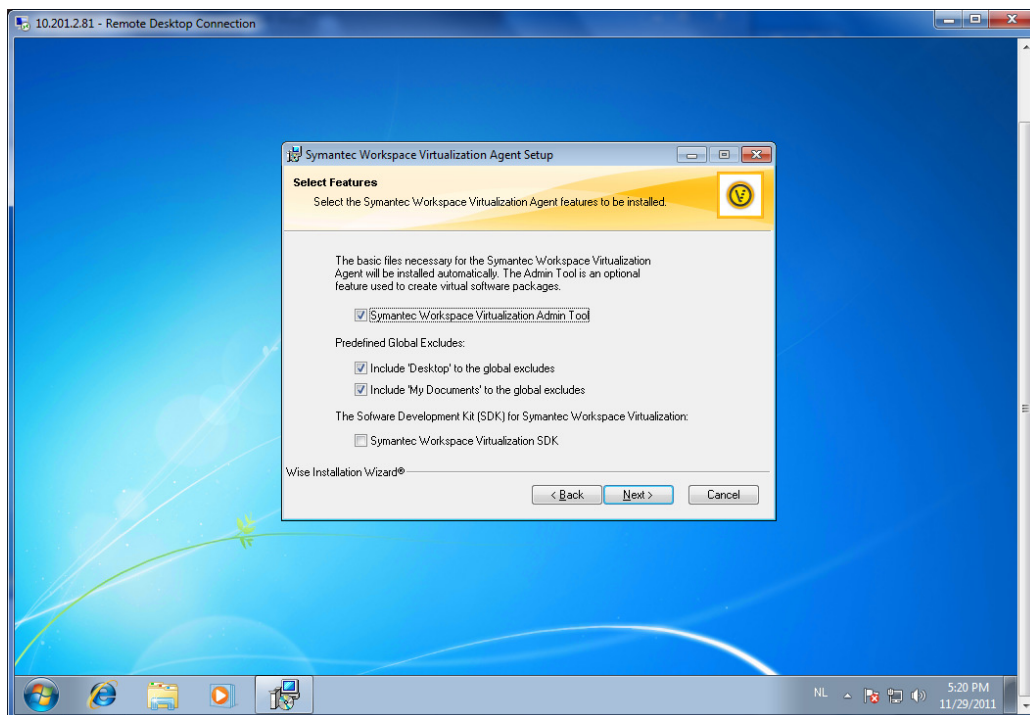
Download the installation and double click to start.



Select *I accept the license agreement* and click *Next* to continue



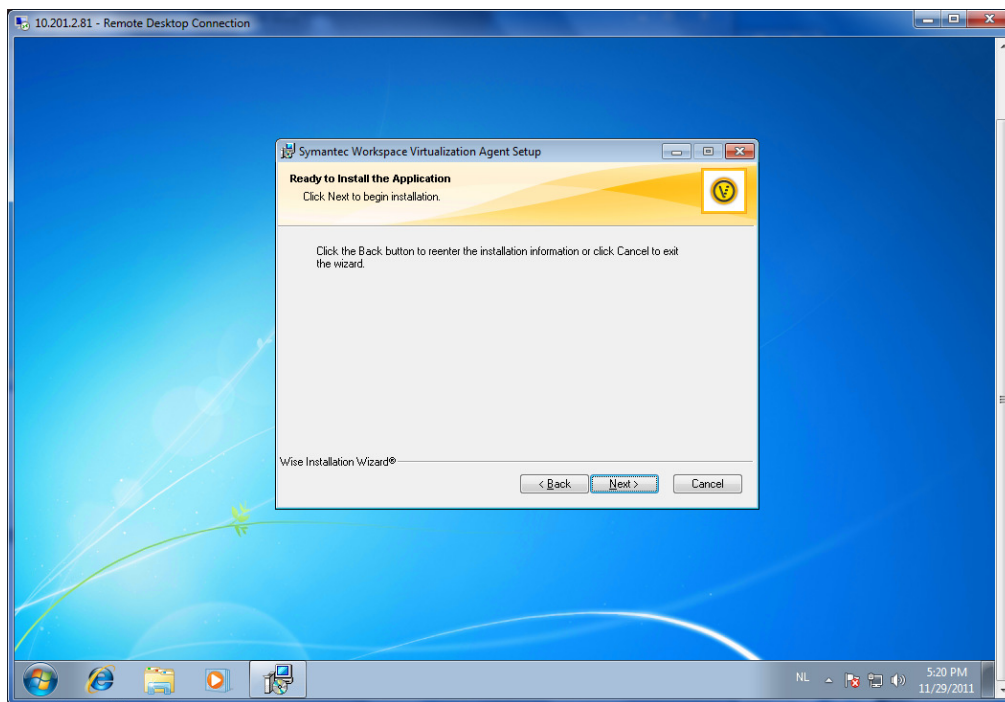
Enter a valid license key.



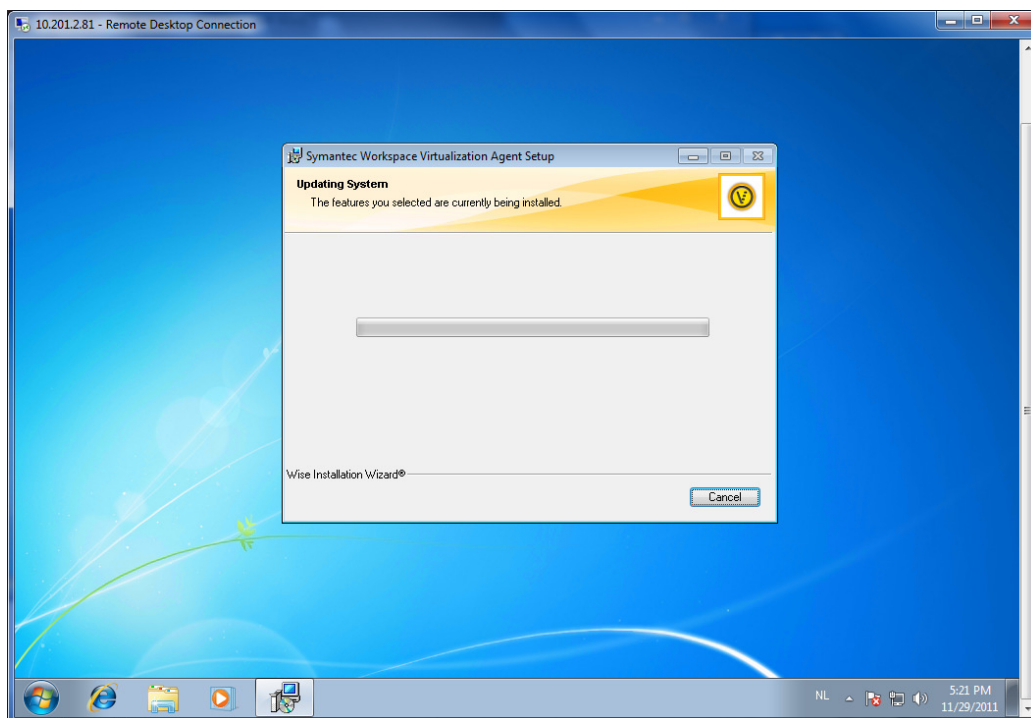
Select the options:

- Symantec Workspace Virtualization Admin tool
- Include "desktops" to the global excludes
- Include "My Documents" to the global excludes

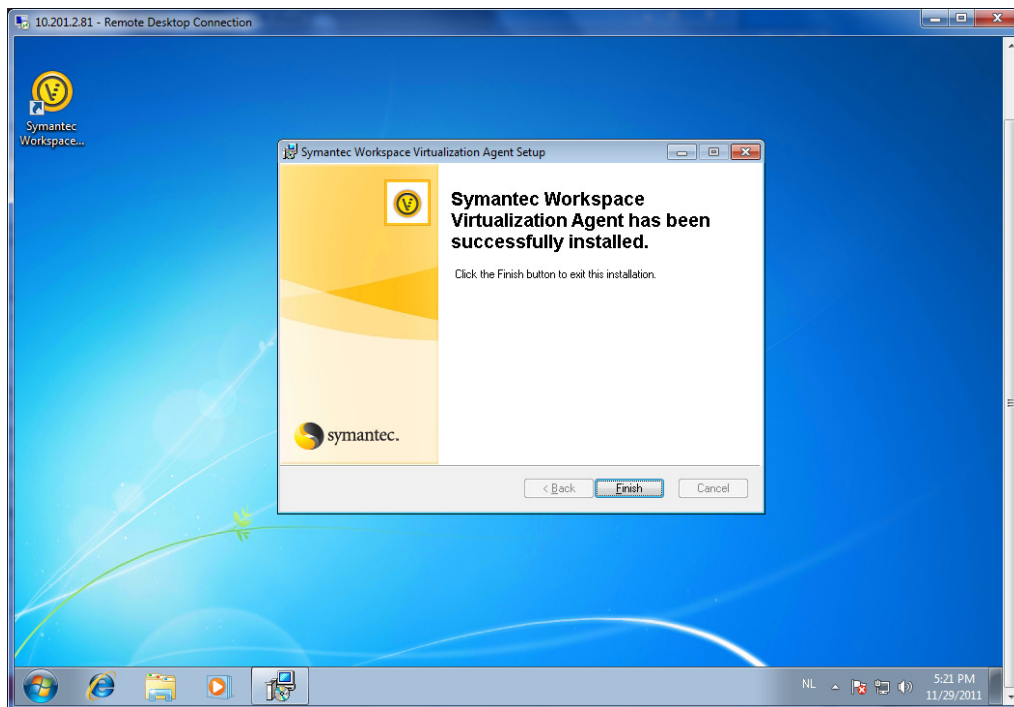




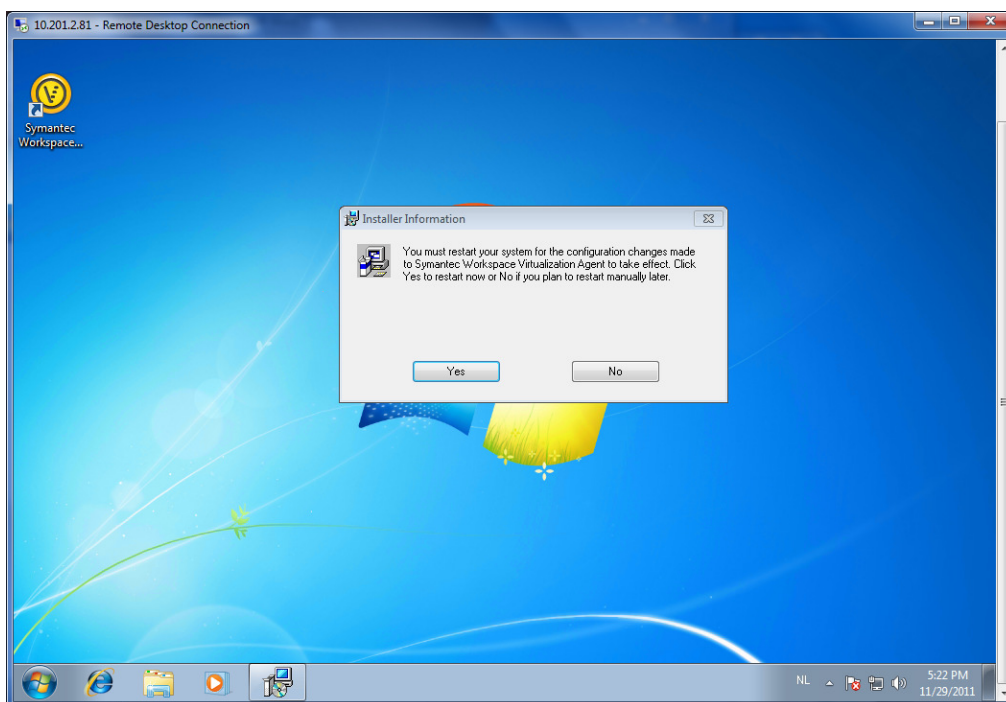
Select Next to start the installation



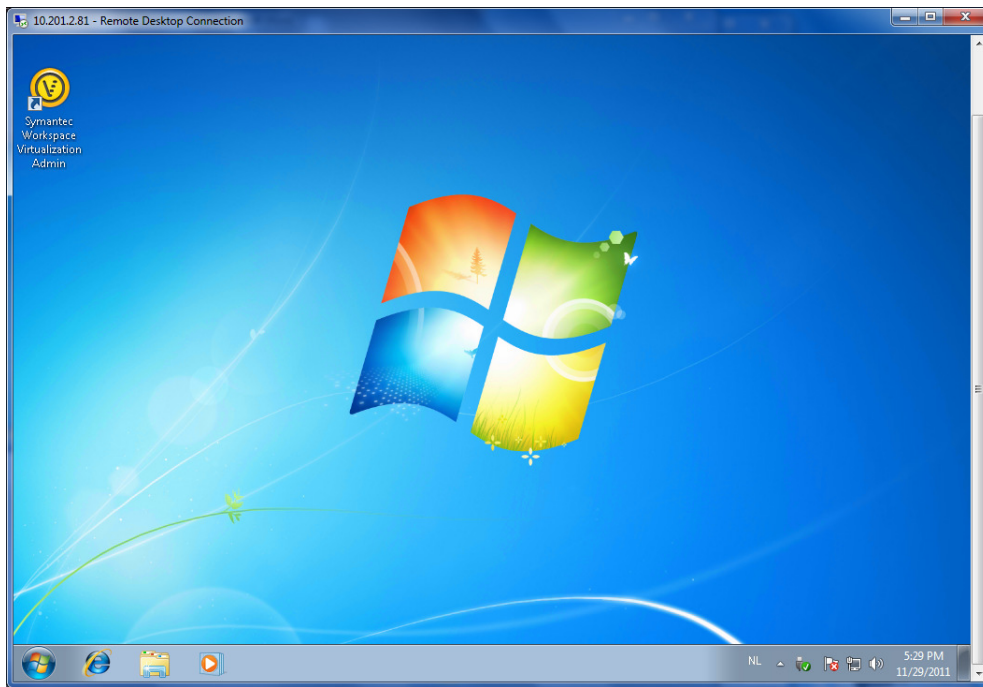




Select Finish to finalize the installation.



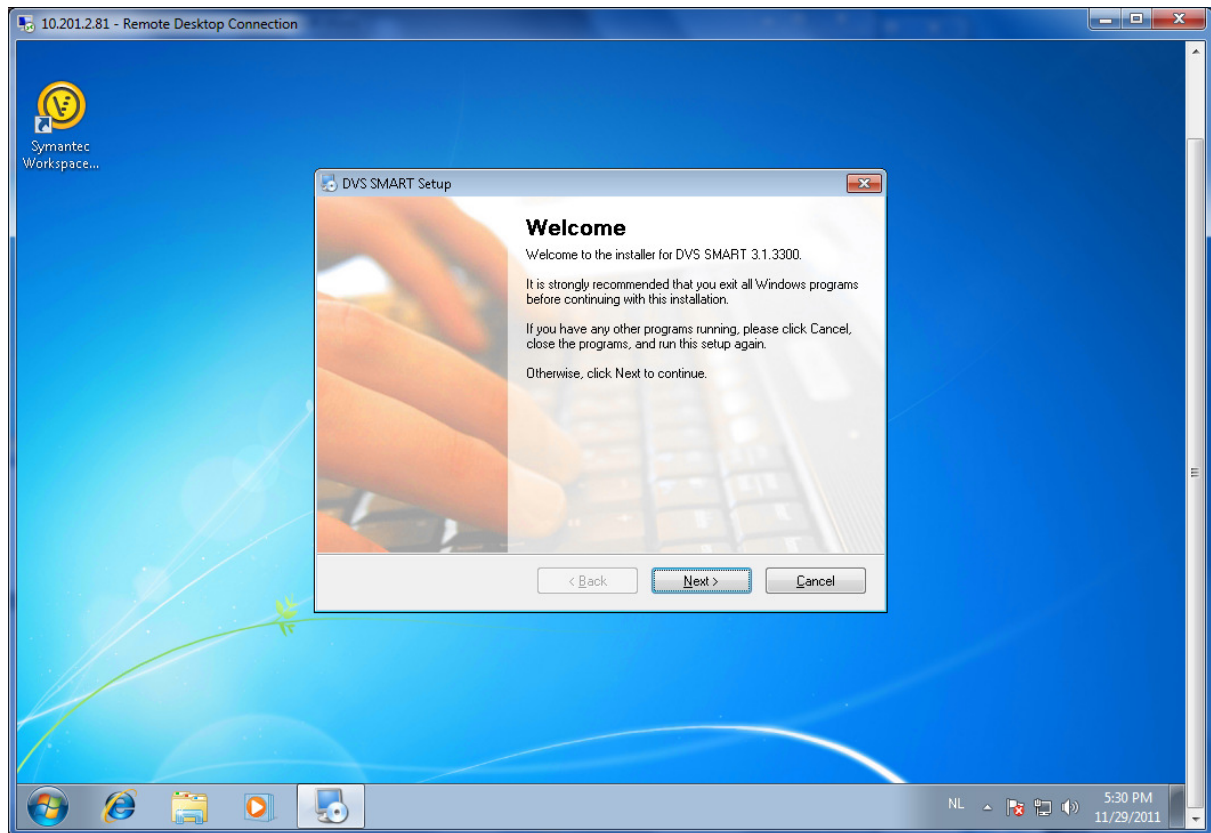
There is no need to reboot the computer at this point. Select No



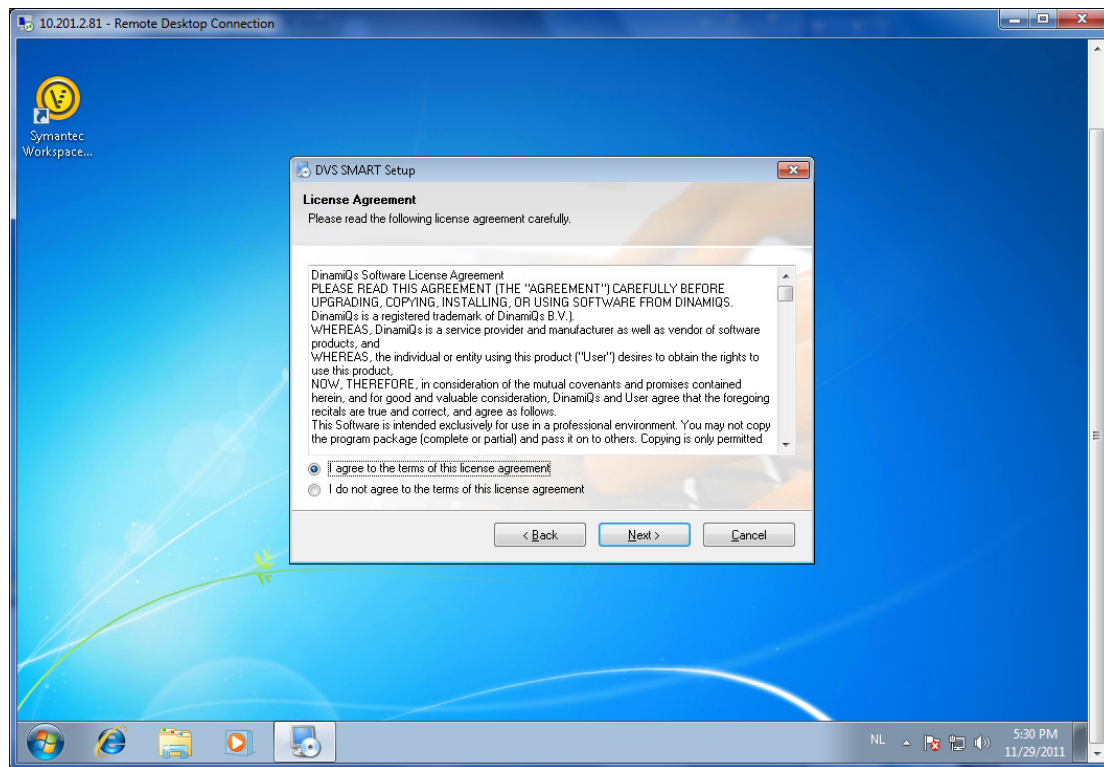
The SWV icon is now listed on the desktop.

## 2: Install DinamiQs SMART

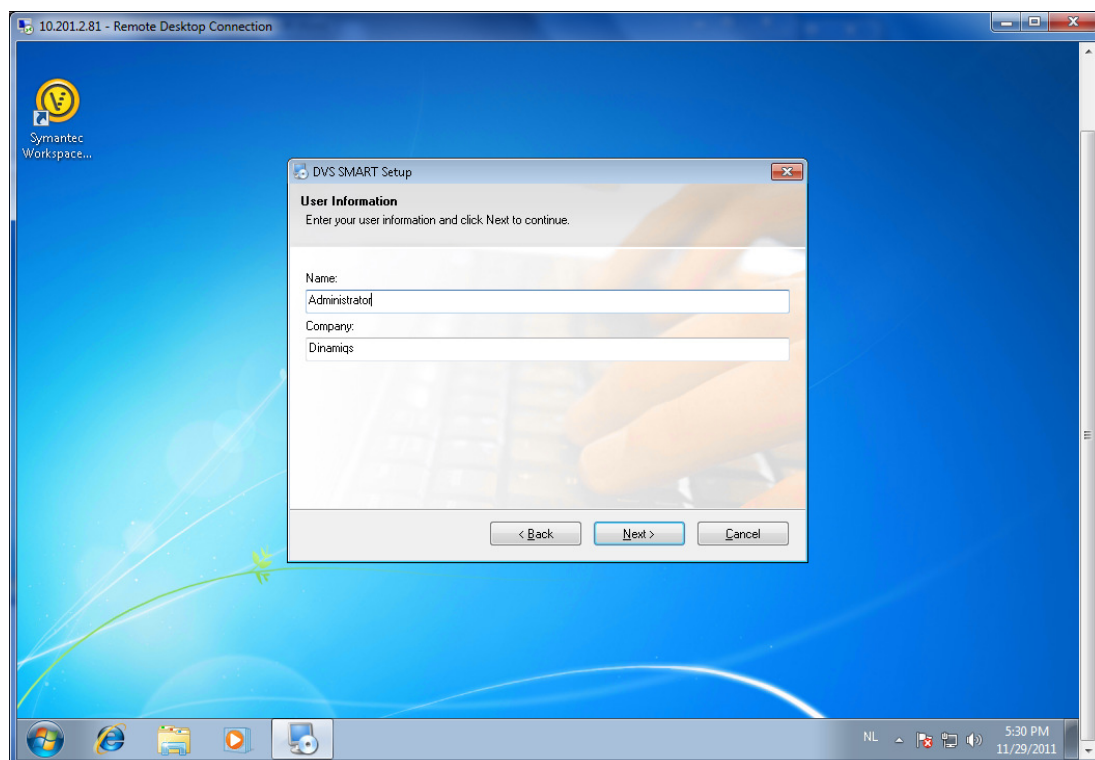
Ensure you are logged on as an administrator before starting the installation.



After double clicking on the software, the installation will start. Select next to continue.

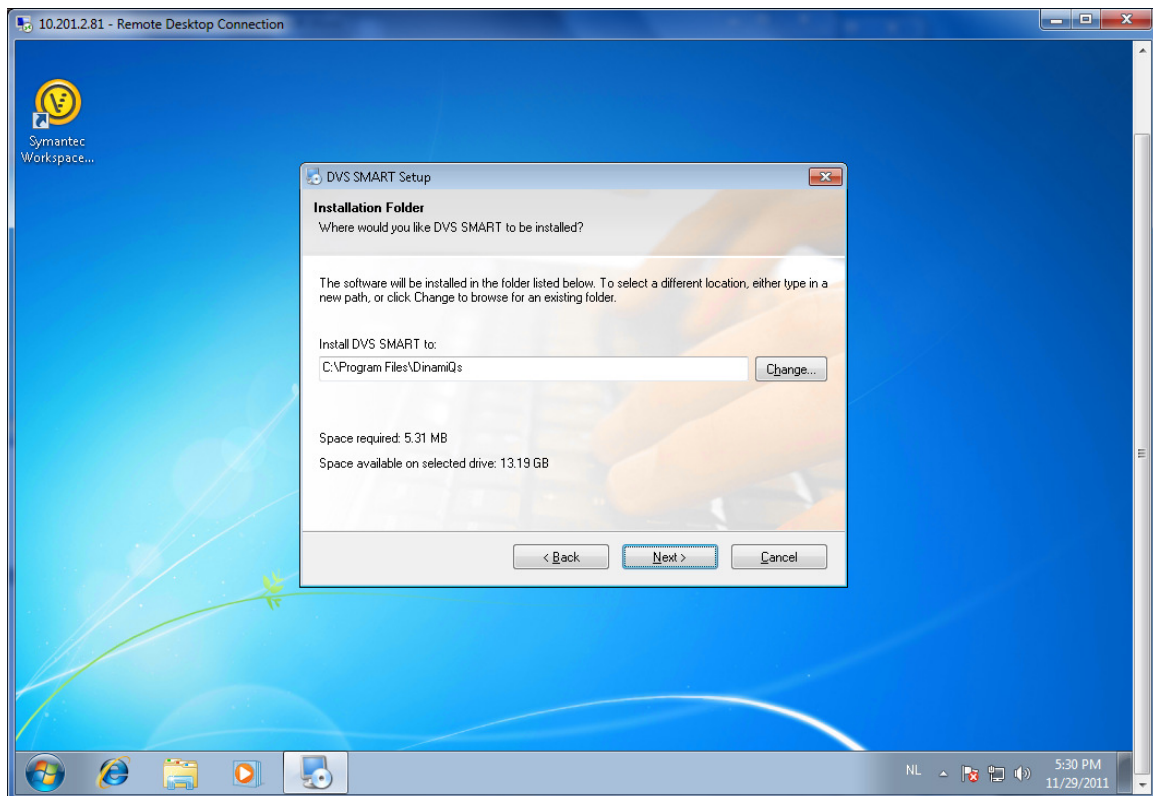


Select I agree to the terms of the license agreement and click Next to continue.

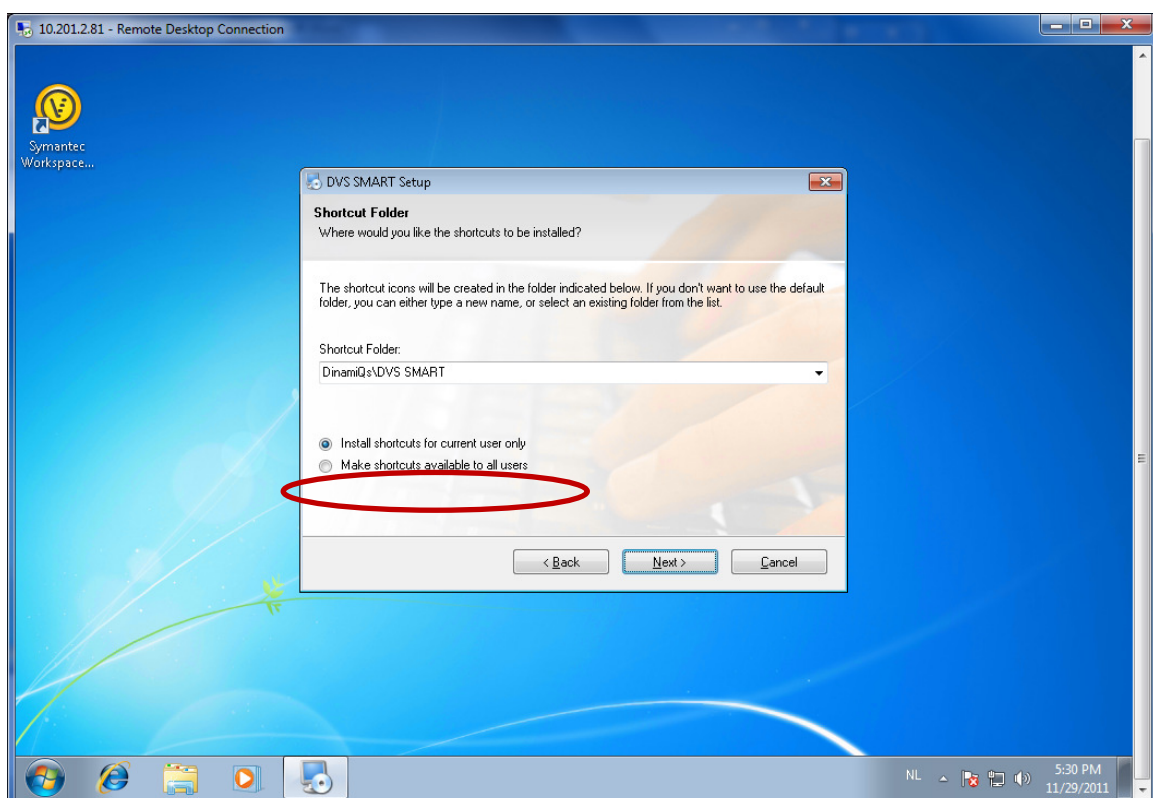


Give the username and organization name and select Next to continue.

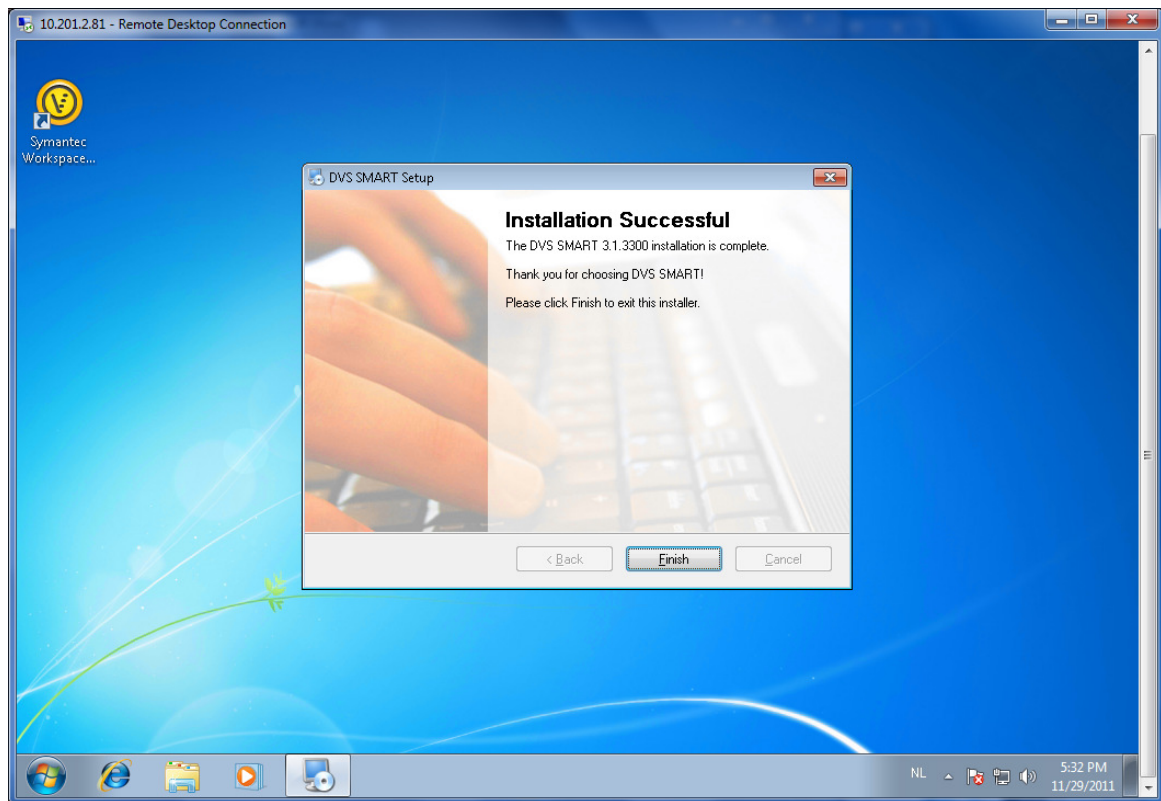




Install the software on the default path and select Next to continue.



Select install the shortcuts available to all users and click Next to continue.



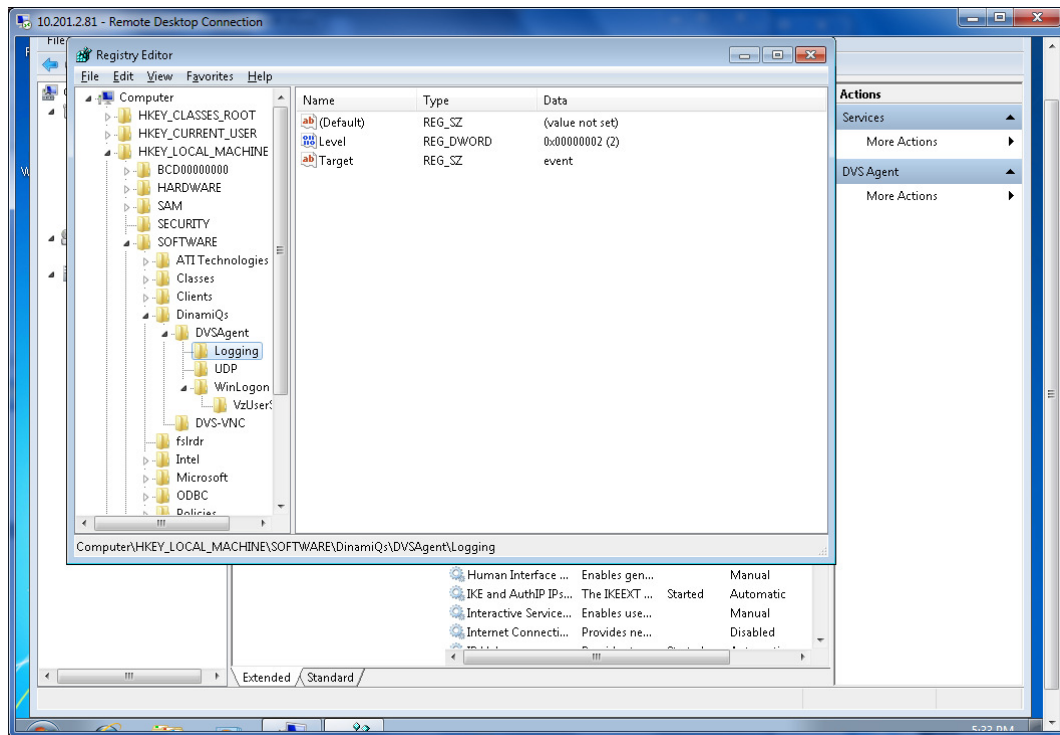
Select finish to end the installation.

Now you have to reboot your computer to load all drivers and make Symantec Workspace Virtualization work together with SMART.

### 3: Configure SMART

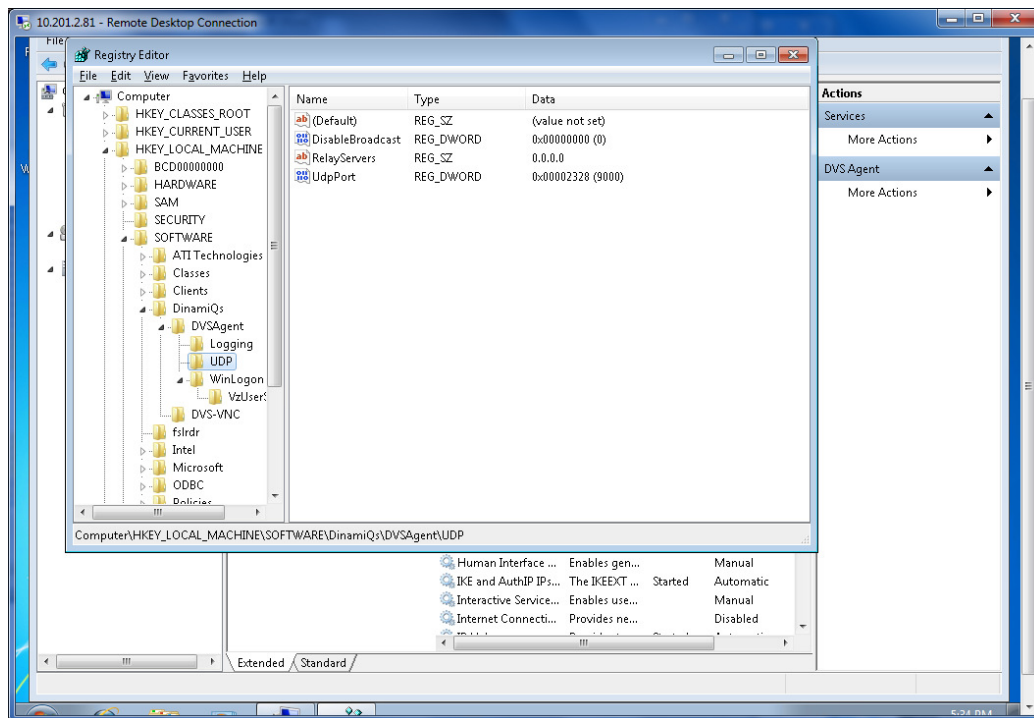
After installing SMART, a few registry keys are added to the registry. Through configuration of these keys, you can alter all settings for SMART to work.

In HKEY\_LOCAL\_MACHINE\SOFTWARE\DinamiQs\DVSagent three subgroups are added.

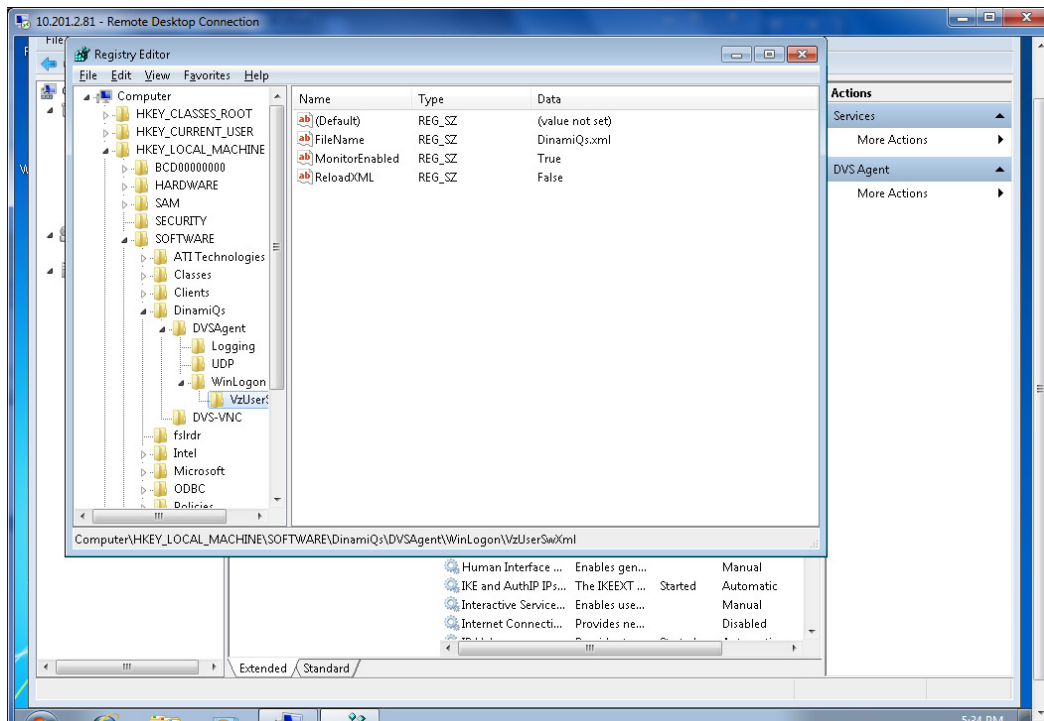


- Logging
  - Level (1 Only errors, 2 major errors, 3 major & minor errors, 4 ridiculously detailed)
  - Target (event writes the errors to the event viewer; file writes the errors to a file in %temp%)



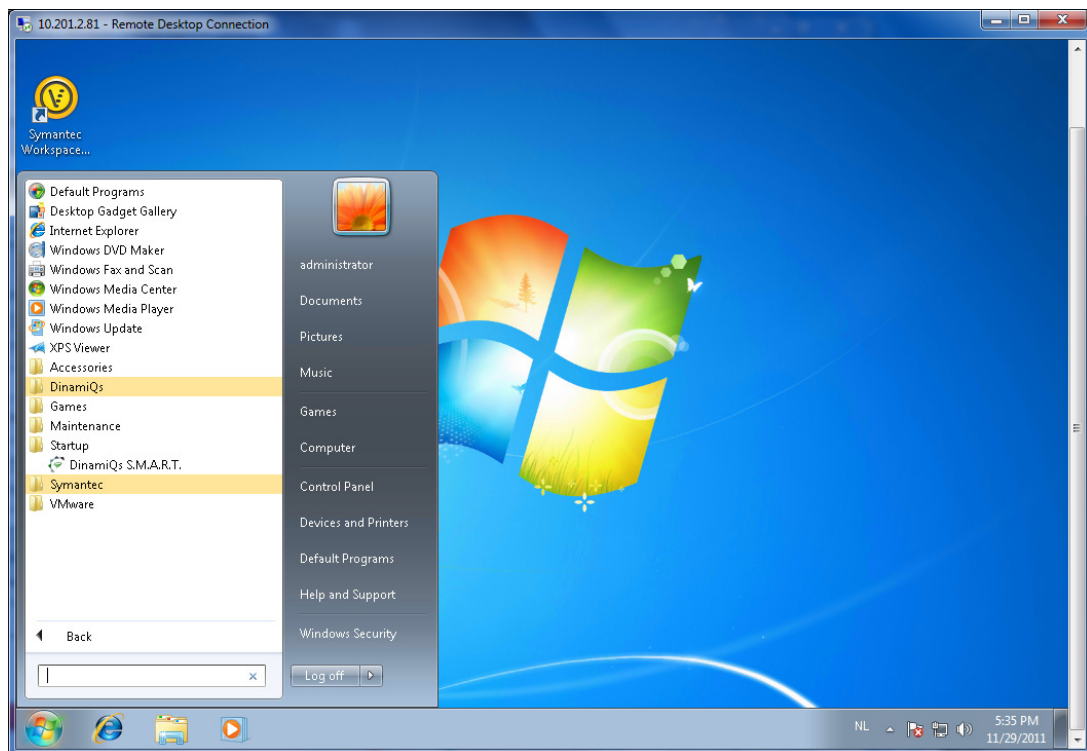


- UDP
  - DisAbleBroadcast (0 = off, 1= on; Set to 1 if you use a Relayserver)
  - RelayServers (IP address of the relay server in larger networks)
  - UdpPort (default port used for communication with Manager)



- WinLogon
  - VzUserSwXml
    - FileName (location and name of the user template, Should be in UNC format [\\servername\sharename\templatename.xml](#))

- MonitorEnabled (0= off, 1= On. When set to 1, SMART reloads the template when changes to the template occur)
- ReloadXML (don't change this as it is set by SMART)

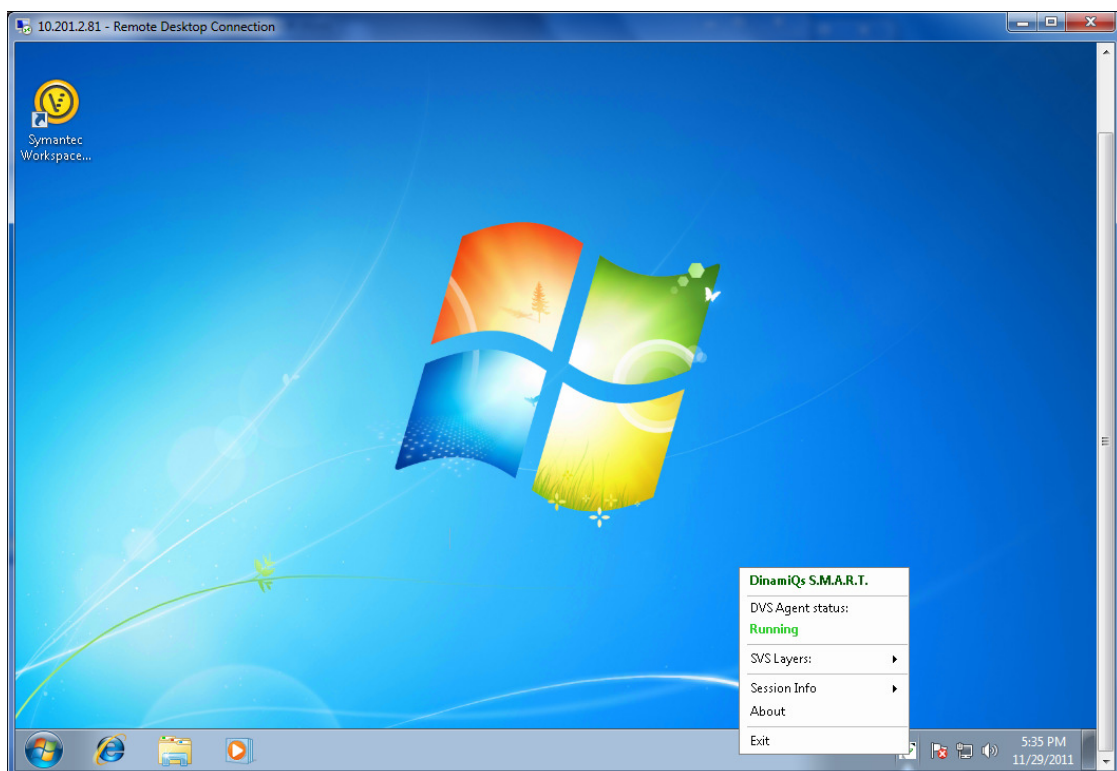


SMART will load at startup through the start menu. When an end user logs on, SMART is activated and will perform all actions set in the template.

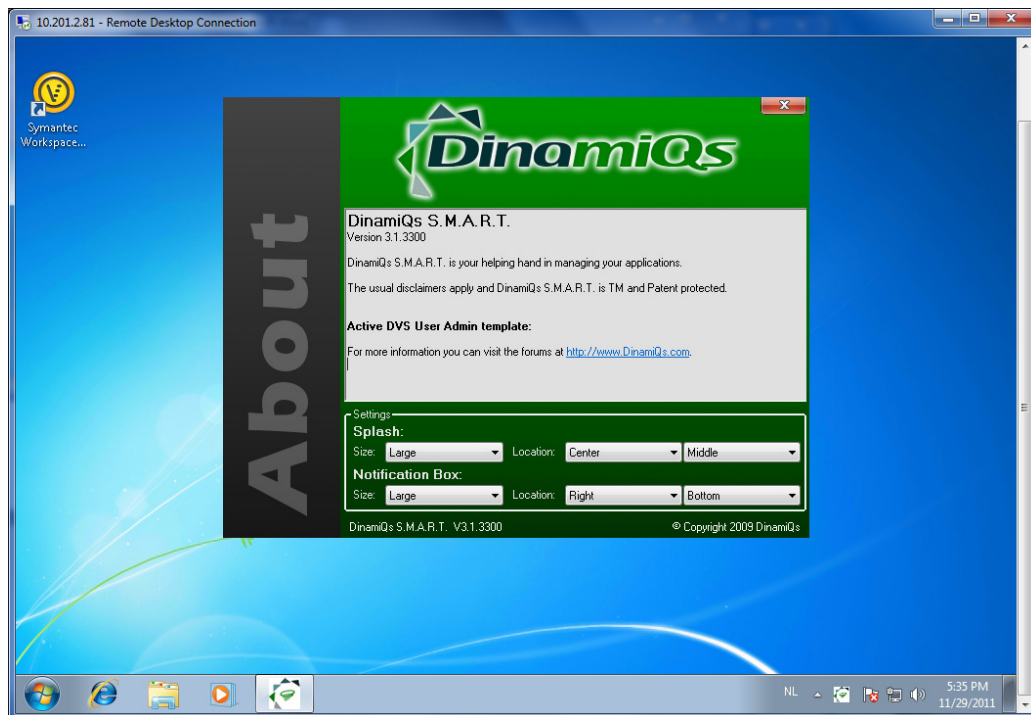
### 3.1: SMART loads



When the computer has started and an end user logs on, the SMART logo is displayed.

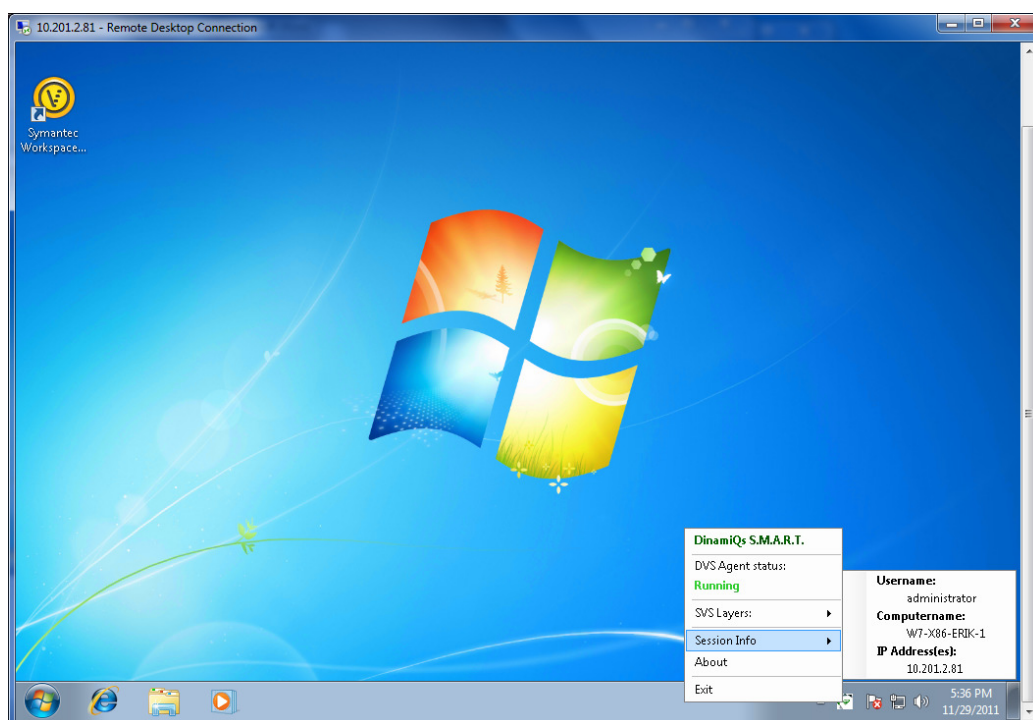


The end user can perform specific actions by using SMART in the taskbar. When the end user right clicks on it, the SMART menu is shown.



When the end User goes to about, the default settings for SMART can be set as shown above.

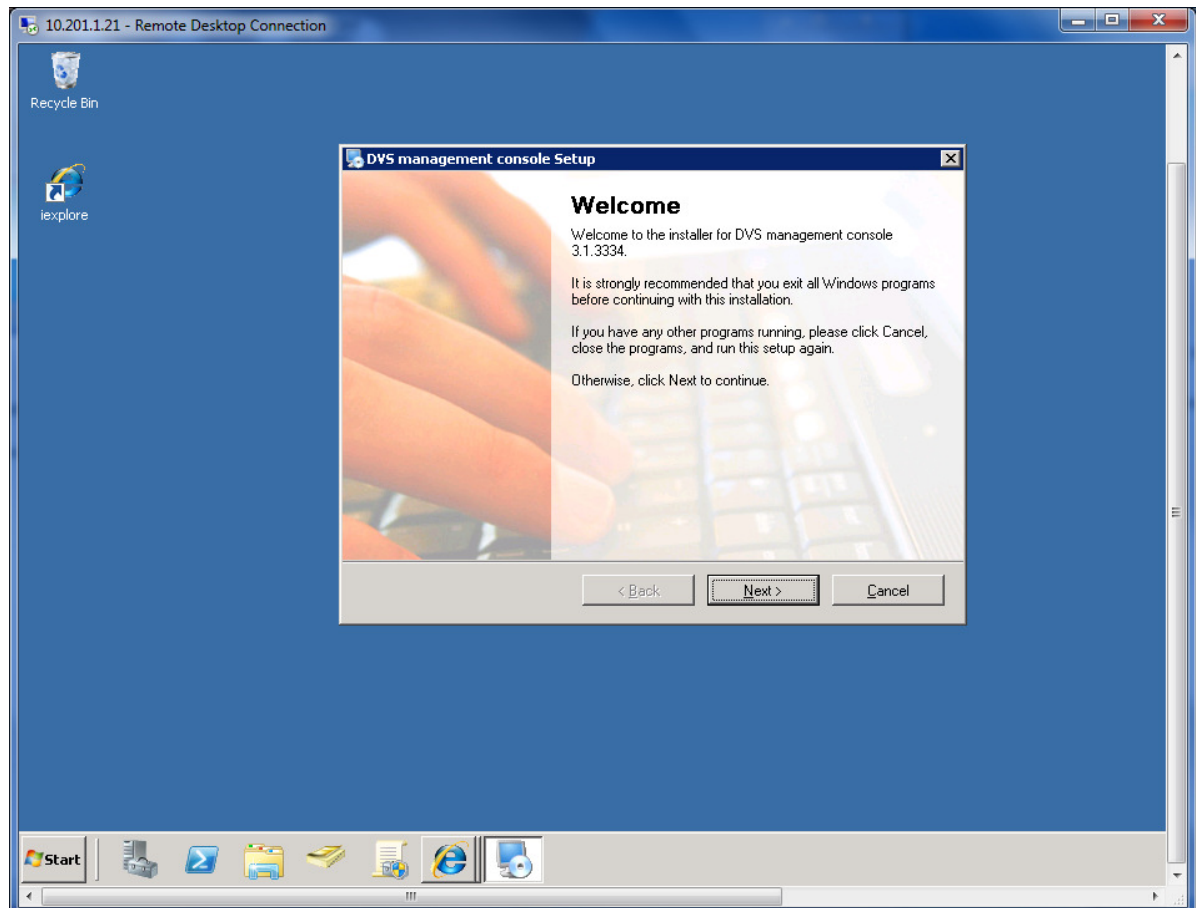
This controls the screens that show up when an end user performs specific actions.



## 4: Install the DVS SMART manager

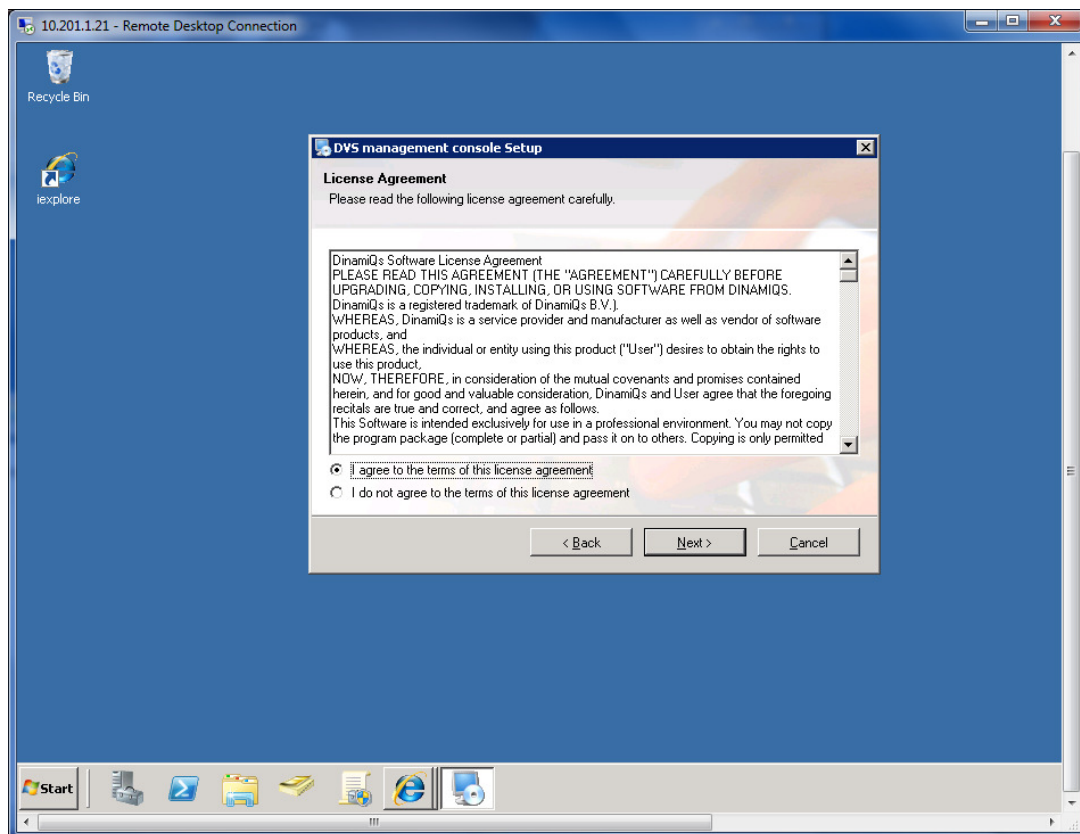
After downloading the software, you can start the installation.

**NOTE:** DO NOT INSTALL THE MANAGEMENT CONSOLE ON A COMPUTER THAT HAS THE DVS SMART SOFTWARE INSTALLED.

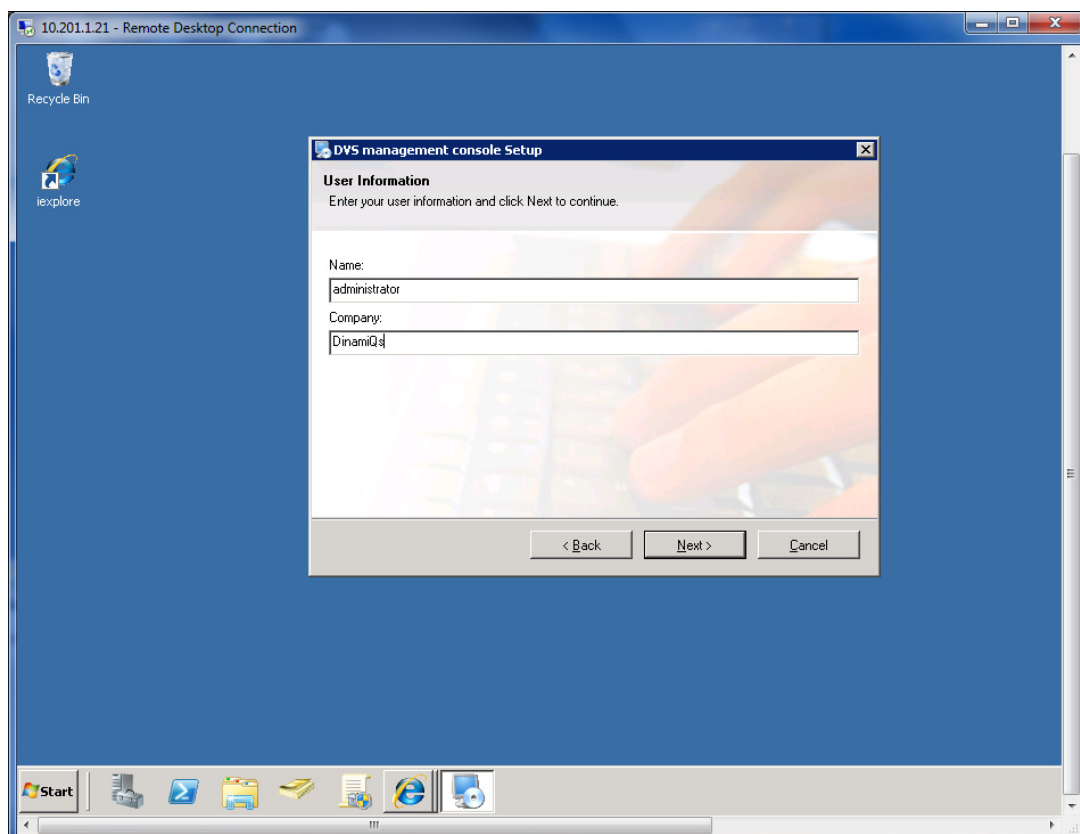




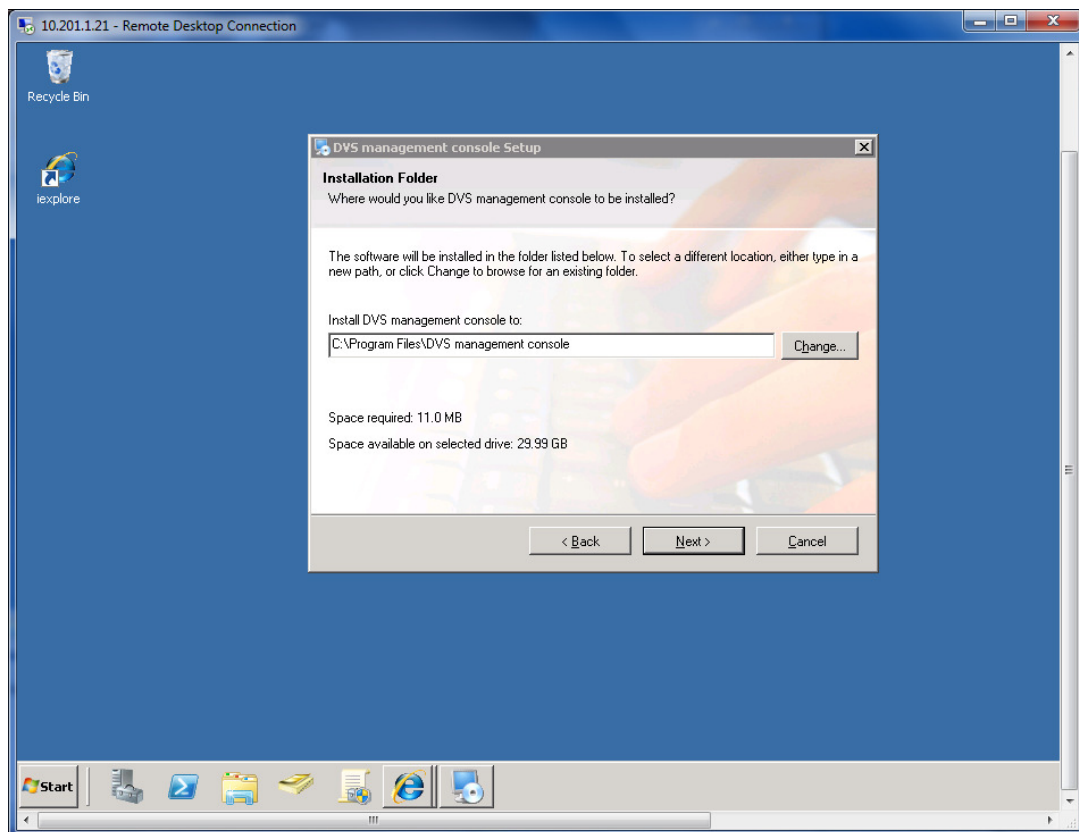
Select Next to start the installation



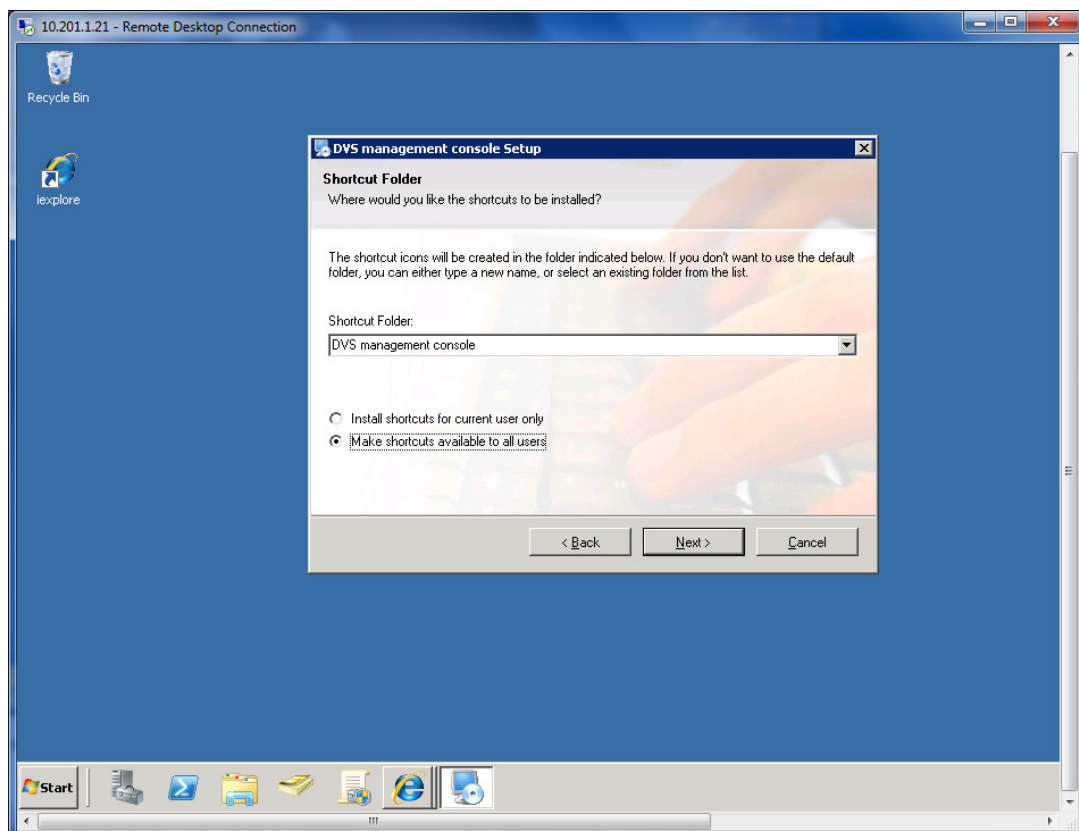
Accept the license agreement and select Next to continue



Verify the user information and click Next to continue

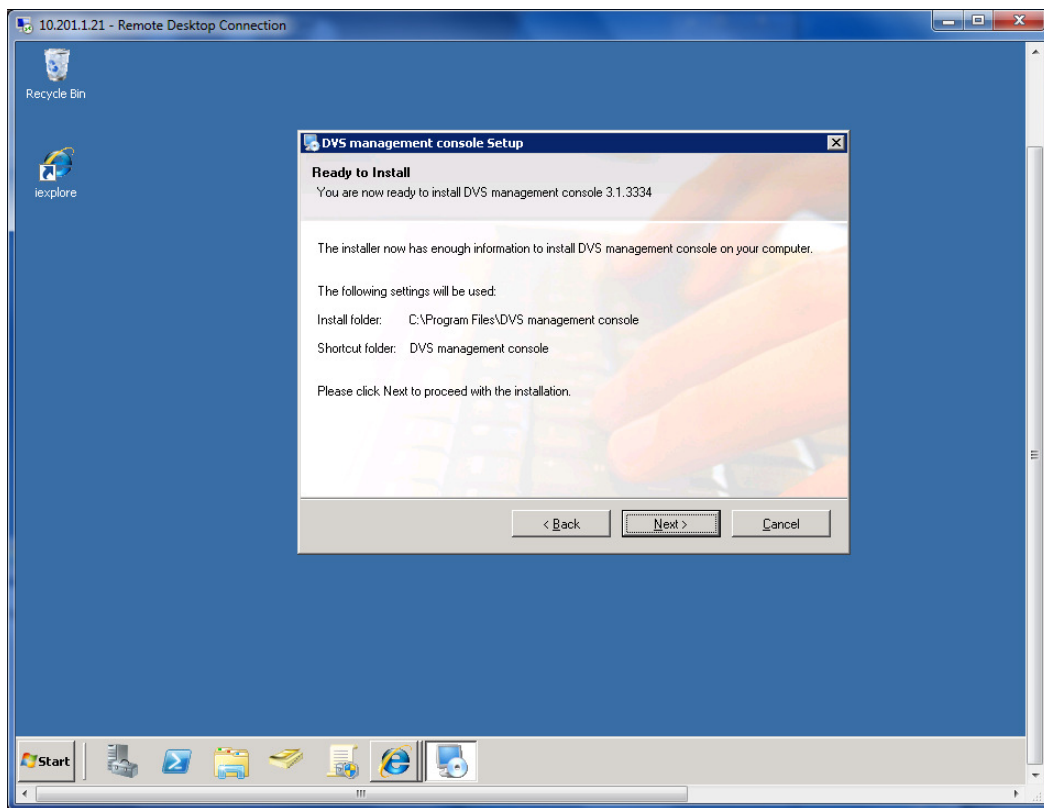


Check the default installation path and click next to continue

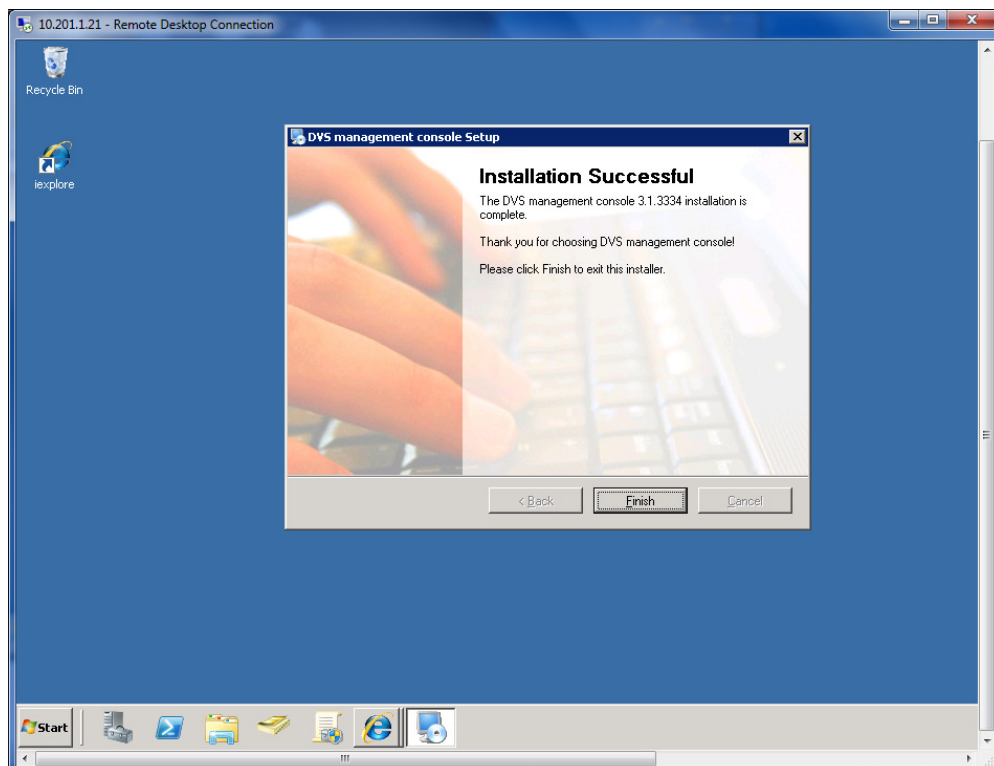




Verify the folder for the shortcuts and click next to continue



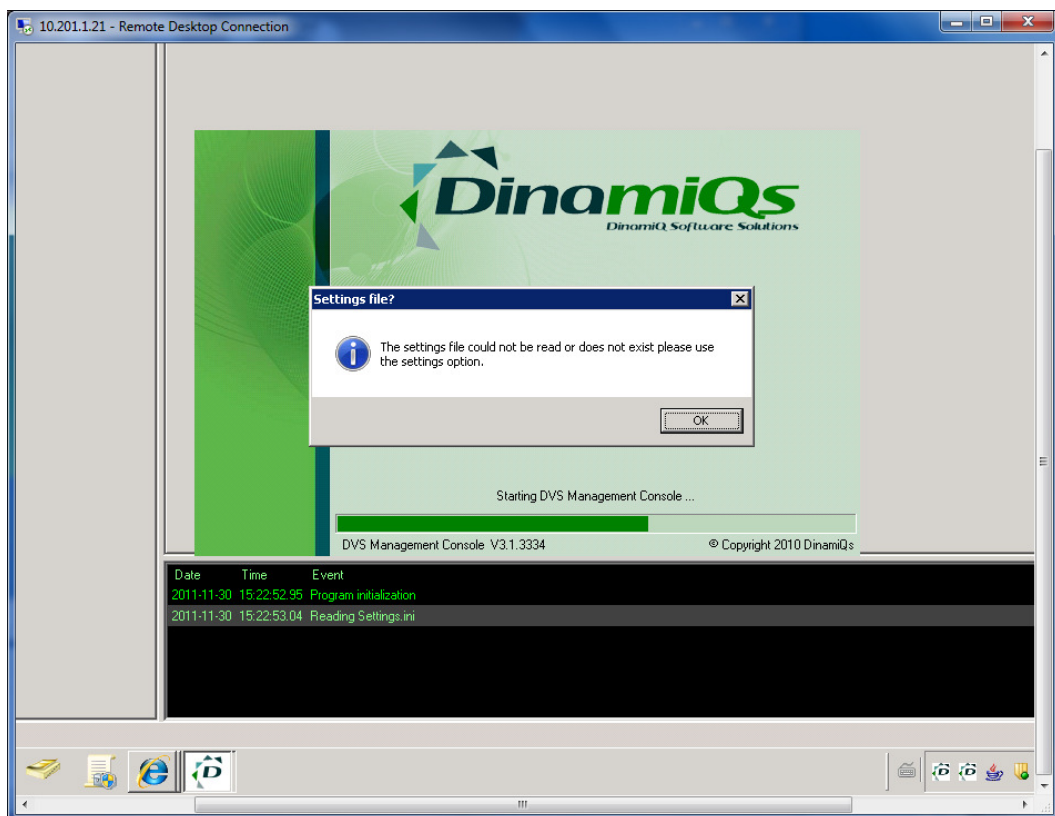
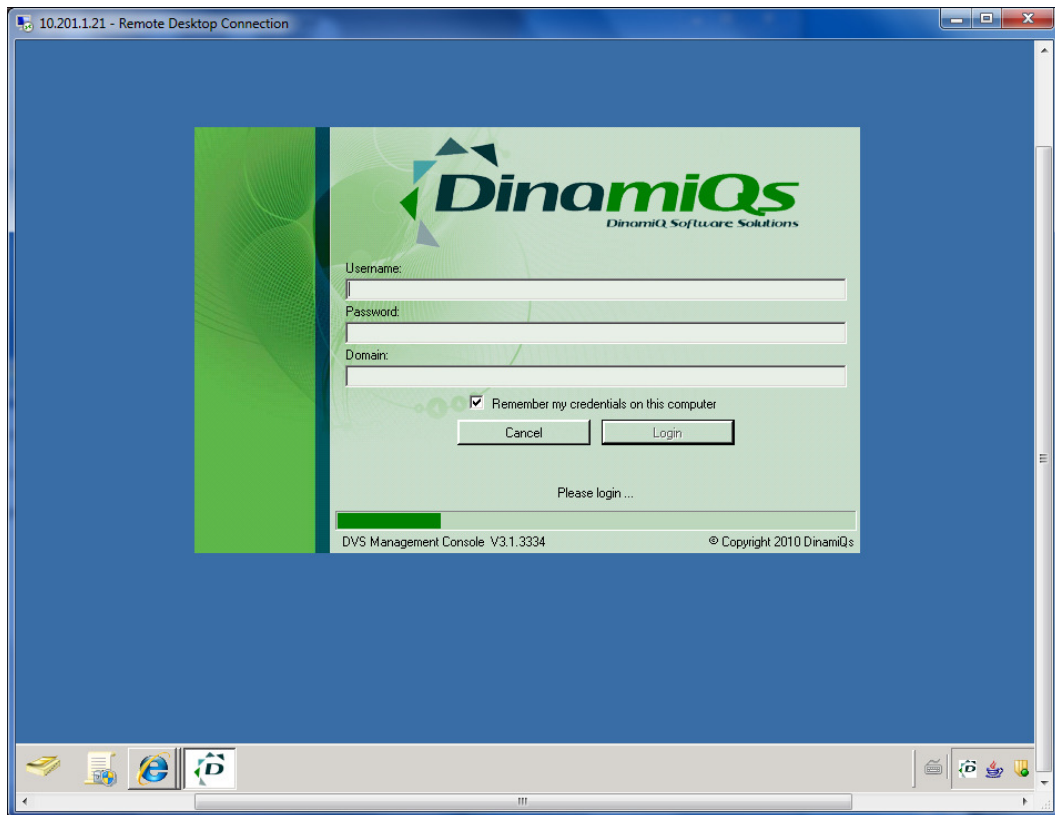
Select Next to start the installation



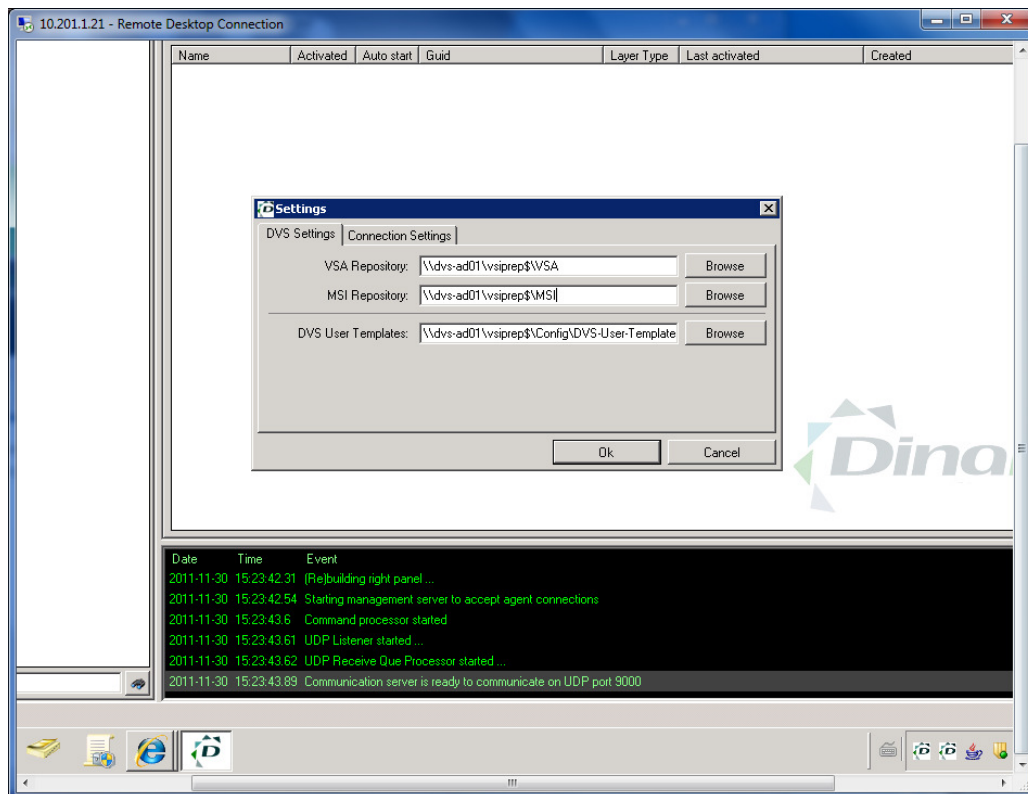
Select Finish to close the installation

## 4.1 Configure the DVS management console

When the DVS management console is started, you need to logon to the domain.



At first start the system will notify you that the system needs to be configured. Click OK to configure the DVS management console.



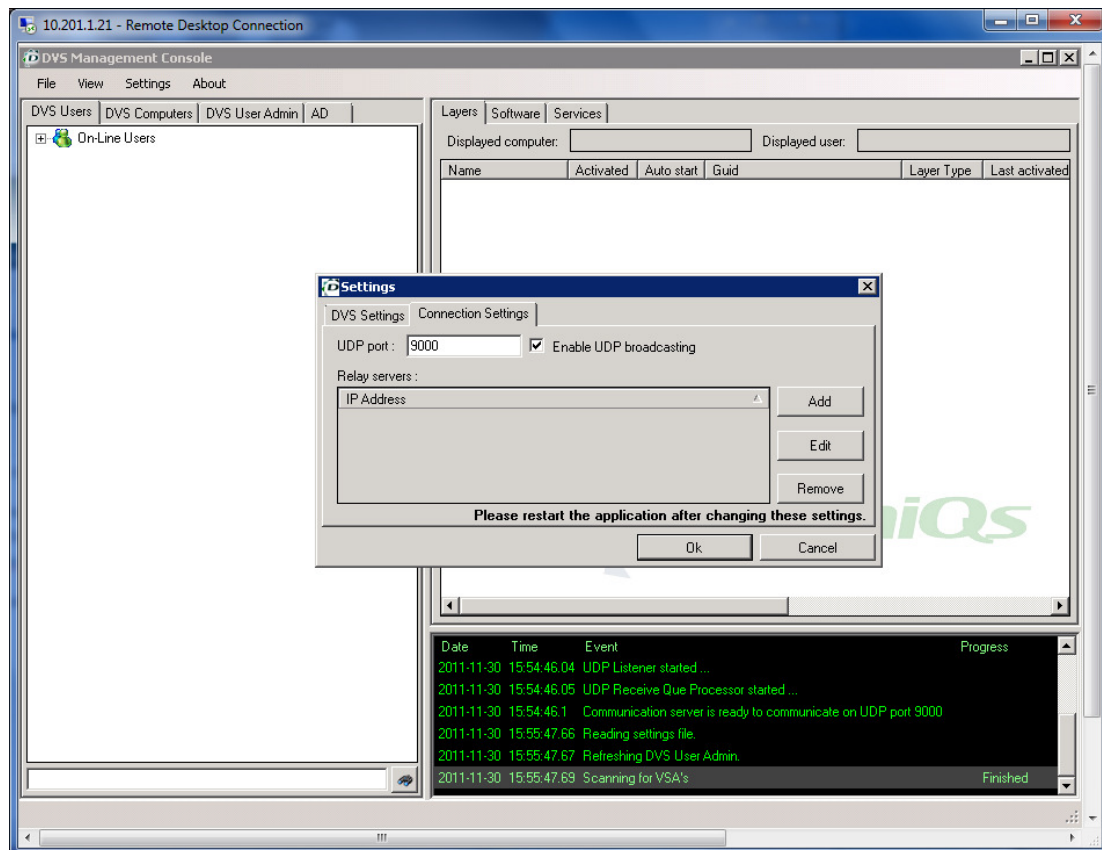
### First step:

Create a folder on a file server where your Virtual software archives will be placed. This location is called a repository.

Share the folder with read permissions for all users. Inside the share create three folders:

- VSA (will contain your VSAs)
- MSI (Will contain all MSIs)
- User templates (contains the XML file)

Connect to the UNC paths through the settings field.



When you are using the DVS Relay server, select Connection Settings and give the IP address of the Relay server.

**NOTE:** The relay server is a server based agent that helps clients to connect when they reside in various subnets. If all clients are in the same IP range then the relay server is not necessary.

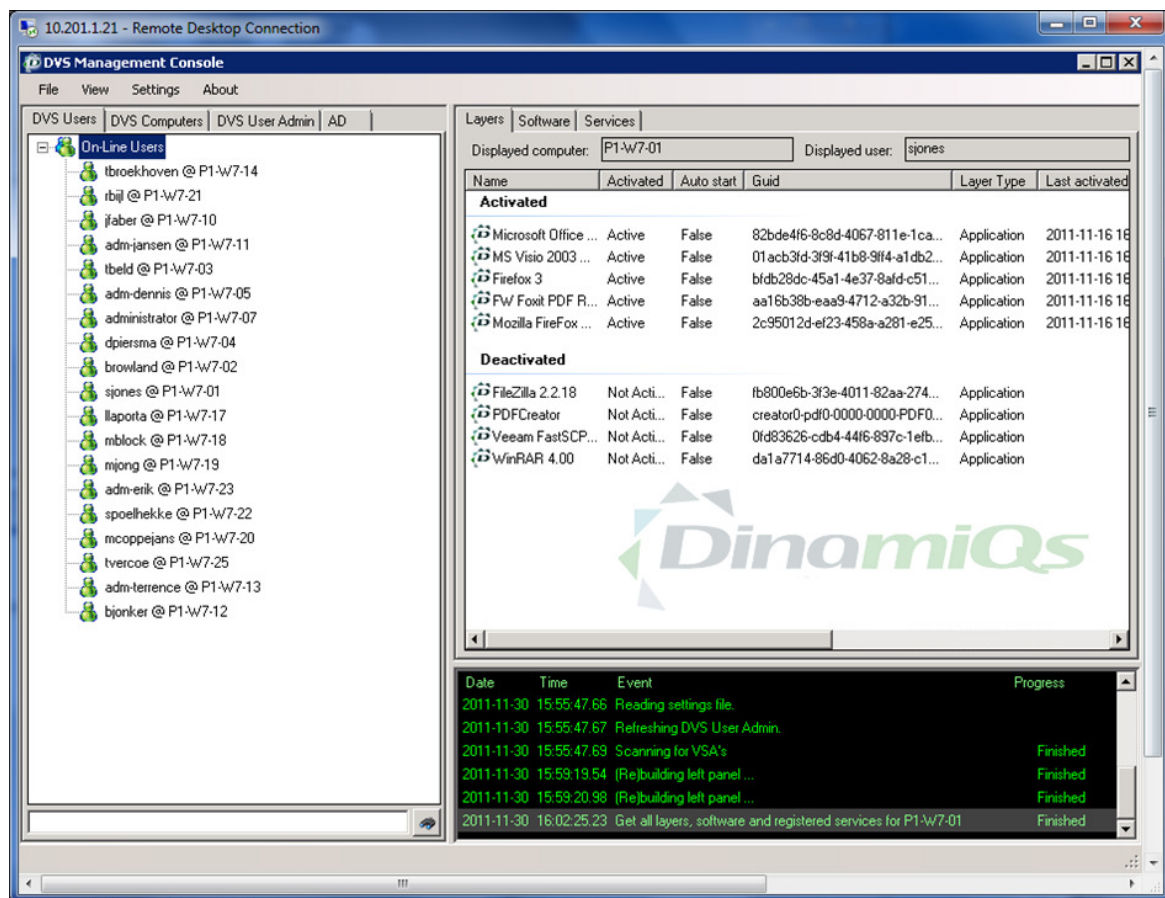
Now your DVS management console is up and running.

The console has 4 tabs:

- DVS Users ( all users logged on will be listed as username@computername)
- DVS computers (all computers that have the agent running will be listed)
- DVS User admin (enables administrators to create user templates for layer deployment and activation)
- AD (Read only AD to search groups)

Through the view button tabs can be hidden if required.

## 4.2 DVS Users and DVS computers



DVS users enables administrators to search for users and perform actions.

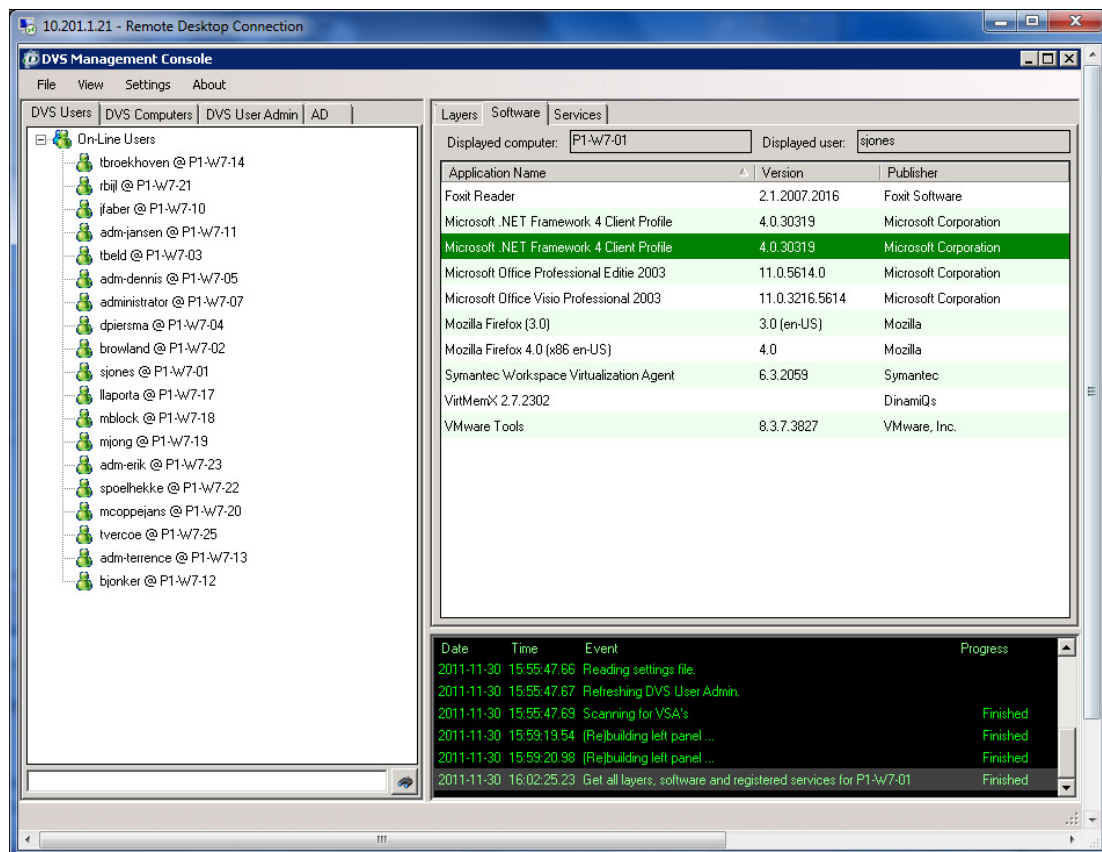
### 4.2.0 Layers

Double click on the user@computer shows all Virtual layers, Local installed software and services.

Layers can be:

- Activated (activates the layer)
- De-activated (De-activate the layer)
- Auto-activate (activates the layer at start)
- Reset (resets the layer to its initial state)
- Import (Streams a layer to that computer)

## 4.2.1 Software

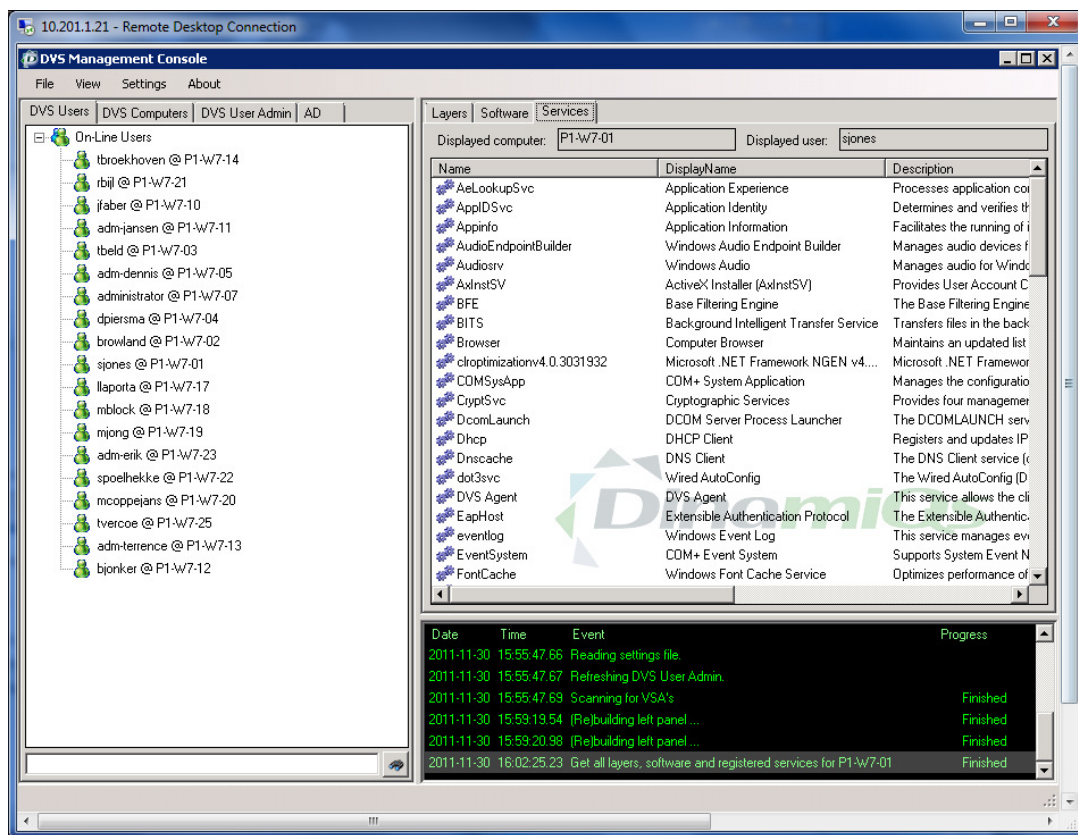


Software allows administrators to manage all software on the computer.

Actions available are:

- Install (installs an MSI)
- Repair (repairs the software)
- Uninstall (removes the software)

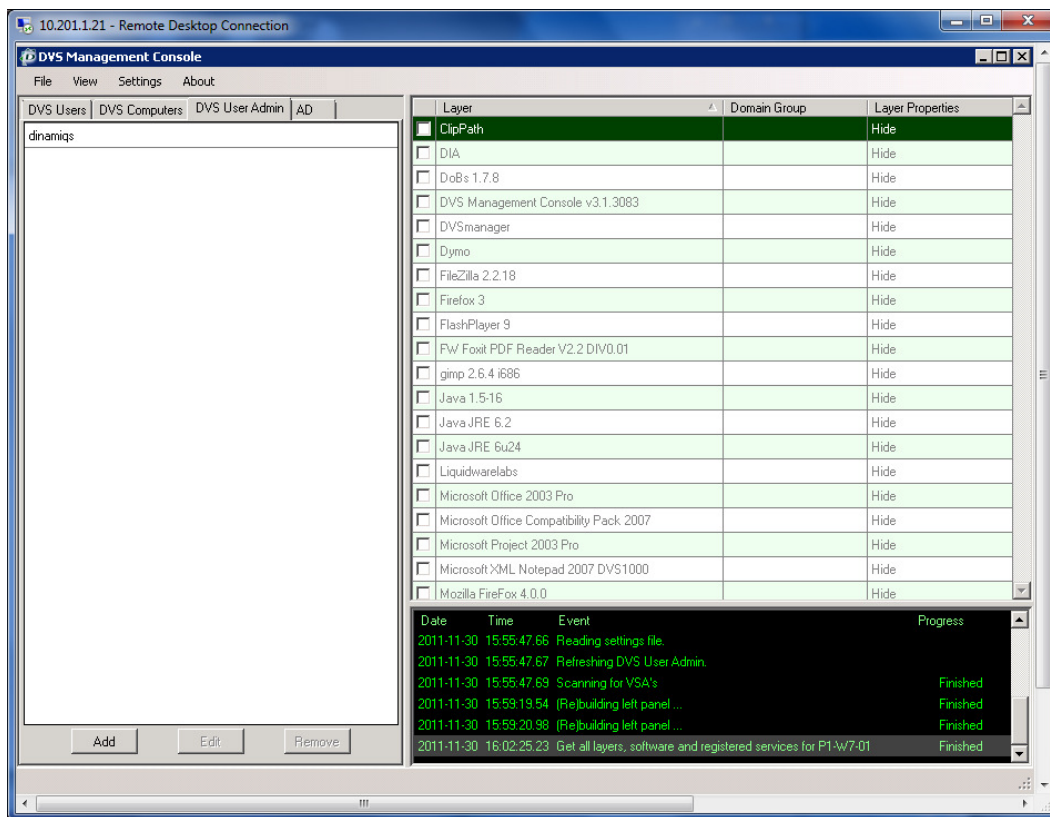
## 4.2.2 Services



Services allows administrators to start or stop services on the remote client.



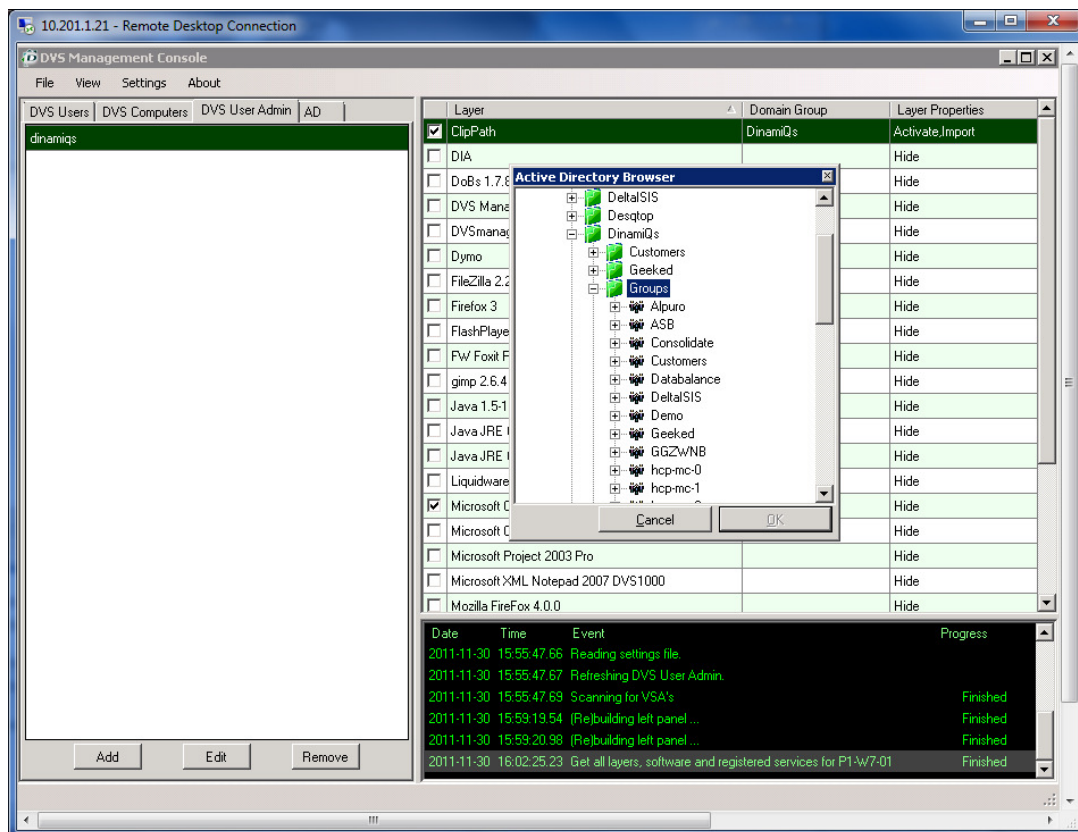
## 4.3 DVS user admin



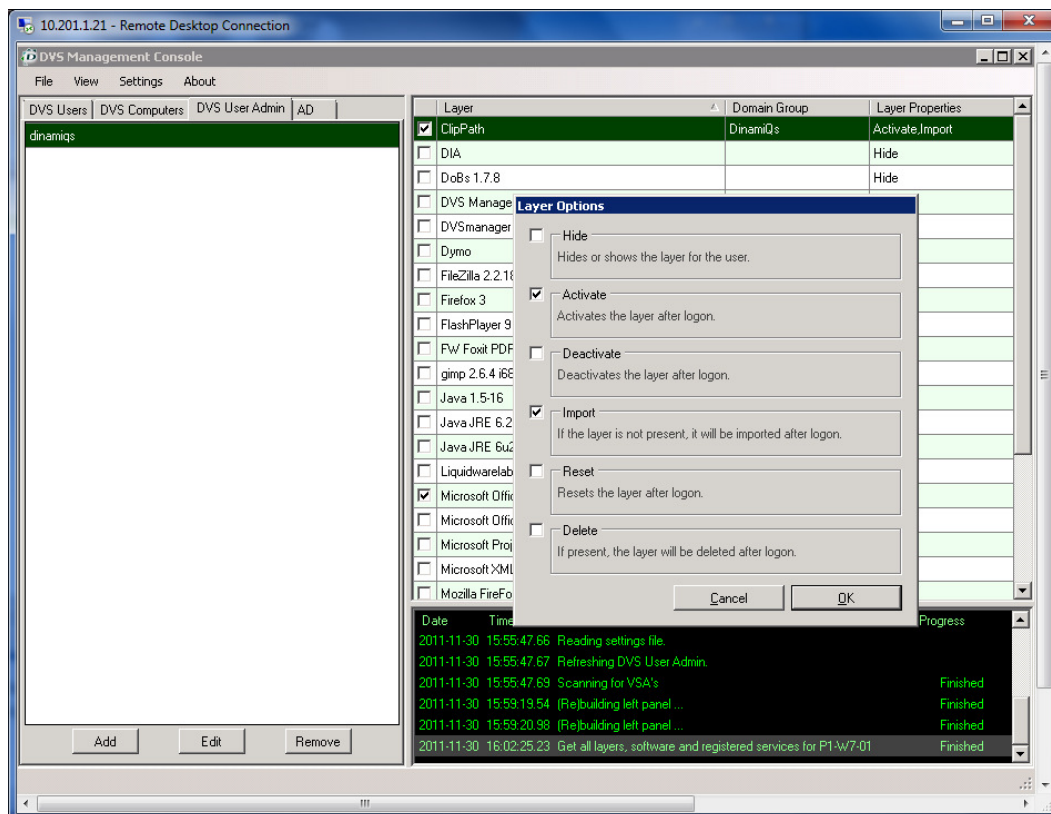
When the tab DVS user admin is selected, the layers from the settings folder are loaded and the administrator can build a deployment template in the left pane.

After the template is ready, please ensure that the XML path on the clients points to the template, to ensure proper operation.

Select the template and click Edit:



Select the layer and click on Domain group. An active directory browser shows up and you can browse to the desired group.



Then select the layer properties.

The following actions are available:

- Hide (when Hide is selected, the layer will be available when activated, but will not show up in SMART. The end user cannot perform actions themselves)
- Activate (will activate the layer)
- De-activate (will de-activate the layer)
- Import (will stream the layer to the endpoint)
- Reset (will reset the layer to its initial state)
- Delete (will remove the layer from the endpoint)