

CD SWAT

CA DevTest  
10.2



# Improved Installation - Workstation

Prepared by: Surya Suravarapu  
Date: January 2018

# Contents

- Chapter 1: Introduction** **3**
  - Purpose ..... 3
  - Document Tracking ..... 3
  - Reporting Issues..... 3
  
- Chapter 2: Improved Installation** **4**
  - Challenges with Workstation Installation ..... 4
  - Solution ..... 4
  
- Chapter 3: Installation Steps** **4**
  - Installation..... 4
  
- Chapter 4: Folder Structure** **9**
  - Data Folder ..... 9
  - Installation Folder ..... 10

# Chapter 1: Introduction

## Purpose

---

The purpose of this document is to describe the improved installation for workstation in DevTest 10.2 by defining Data directories in user folders.

## Document Tracking

---

Version	Date	Author	Version
10.2 GA	01/01/2018	Surya Suravarapu	Version 1.0

## Reporting Issues

Please send your questions/comments/concerns on this document to [SuryaAnilKumar.Suravarapu@ca.com](mailto:SuryaAnilKumar.Suravarapu@ca.com)

# Chapter 2: Improved Installation

## Challenges with Workstation Installation

---

Customers have reported challenges with installing and using DevTest workstation on machines where the users don't have admin rights.

- The main challenge is with editing the user files like properties files (local.properties etc.) and adding jar files to lib / hotDeploy folders. This is not possible, because, windows restricts edit access to folders inside Program Files.

## Solution

---

As a solution, with DevTest 10.2, we have improved the Workstation installation by installing property files, hotdeploy/lib for extensions, and DevTest projects in user folder directory as specified by user.

This ensures that the users don't have issues with editing / adding the files even if they don't have admin rights.

The below property files are added to the user folder directory in addition to lib / hotDeploy for extensions and DevTest project folders.

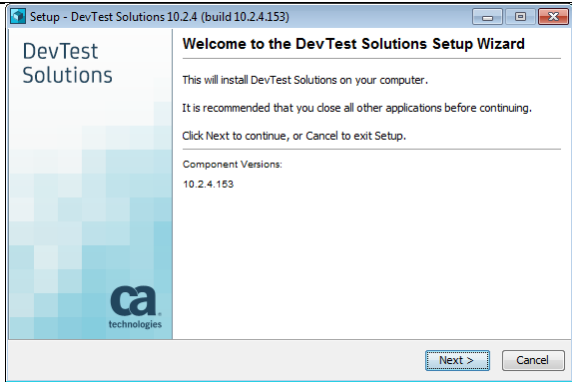
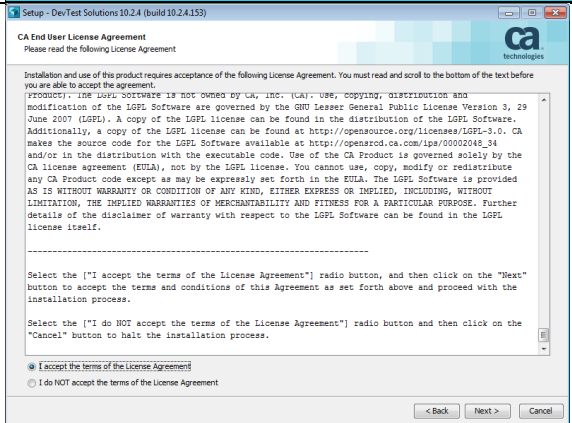
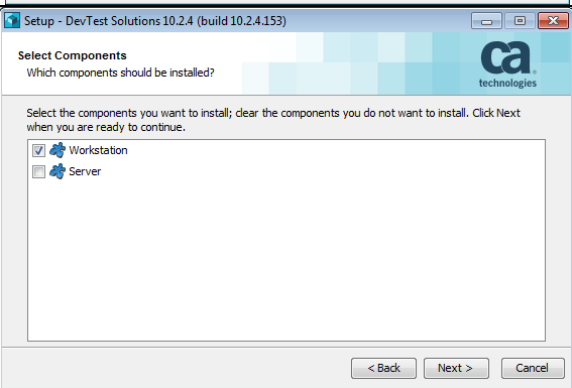
1. Logging.properties  
The DevTest application uses logging.properties file to initialize the logging.
2. Local.properties  
The DevTest application uses the lisa.properties file to externalize the application properties that can be modified by the users for their needs. In order to modify or override a property that is listed in lisa.properties, you can create a file named local.properties and specify a different value for the property.
3. De-identify.xml  
DevTest attempts to recognize sensitive data and substitute random, but validly formatted, values for that data during recording. To do this, the application relies on de-identify.xml

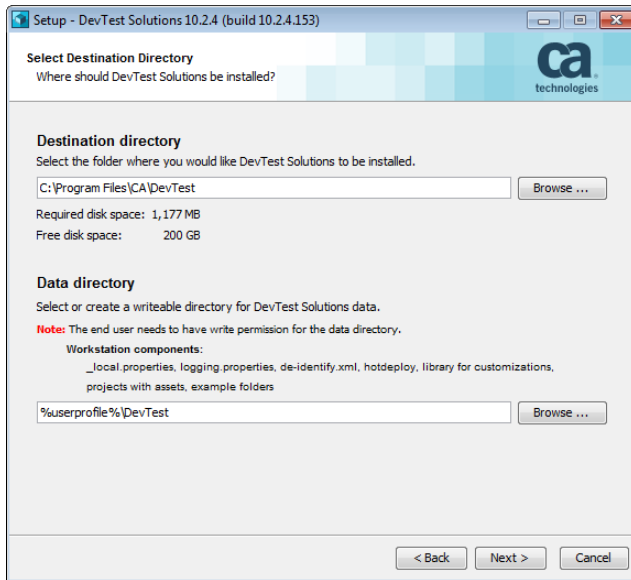
# Chapter 3: Installation Steps

## Installation

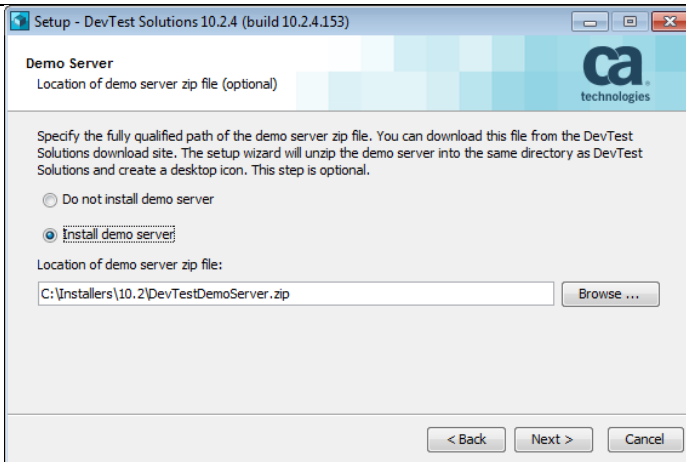
---

Installation steps for workstation in DevTest 10.2 are as given below.

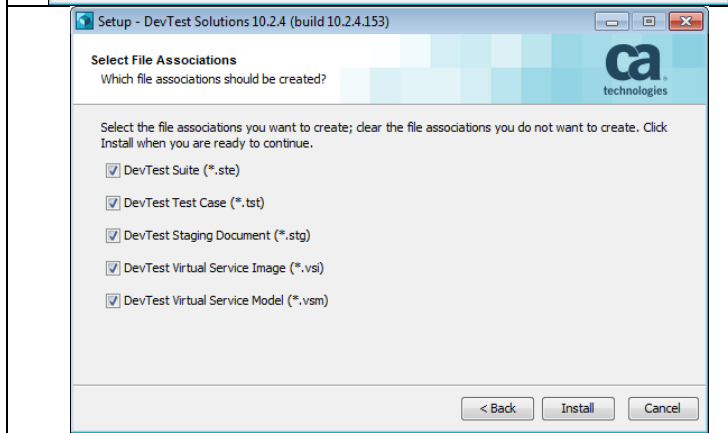
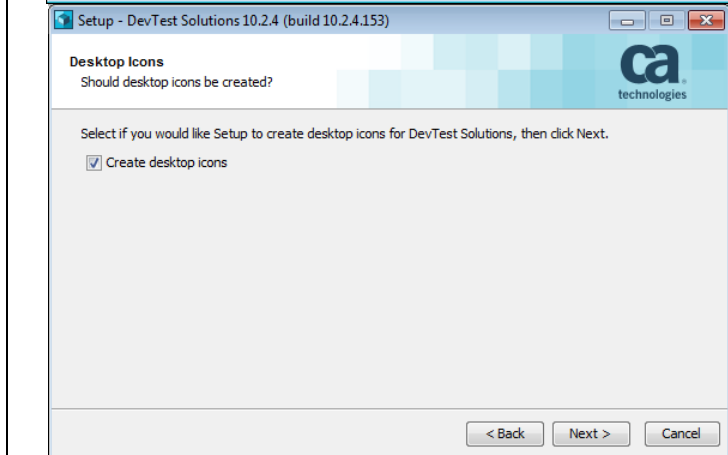
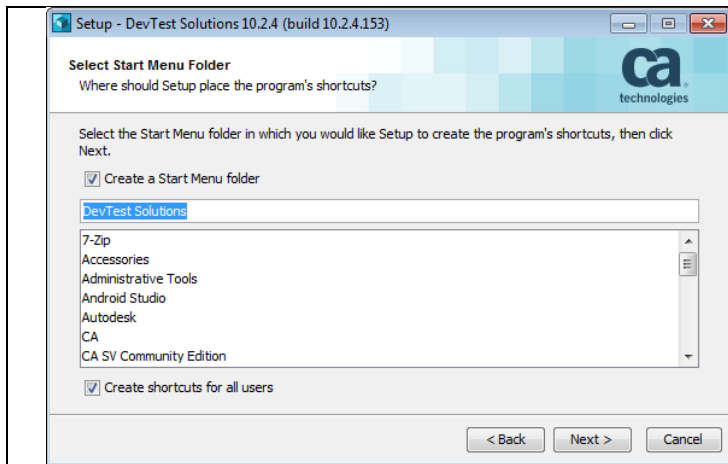
	<ul style="list-style-type: none"> <li>• This is the welcome screen for the 10.2 installer</li> </ul>
	<ul style="list-style-type: none"> <li>• This is license agreement screen</li> </ul>
	<ul style="list-style-type: none"> <li>• In component selection screen, we will choose workstation as this is a workstation only installation.</li> </ul>



- As shown in this screen, along with the installation path for the workstation, we also choose data directory, which will store the user editable files and folders like properties files, hotDeploy etc.
- When installing, the default data directory is a subfolder named *DevTest* within the user's home folder. Example: **%userprofile%/DevTest**
- Using the %userprofile% (or '~') user home variables might be useful for system administrators who are installing this product on behalf of other users.
- These variables resolve to the user's home folder of whatever user is using the product.
- The specified data directory must exist and the user must have write permissions to it. If it does not exist, the installer will create it and will test to be sure it is writable.

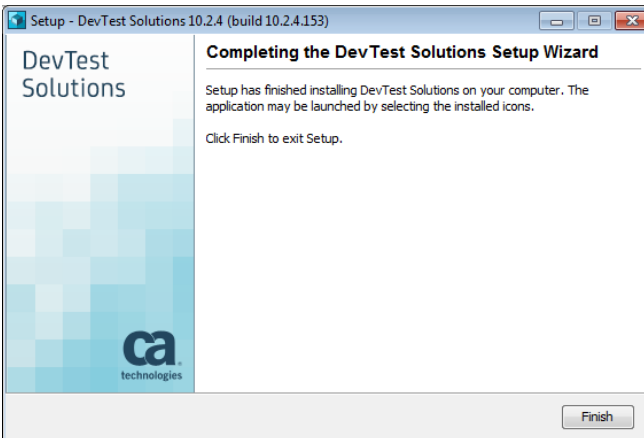
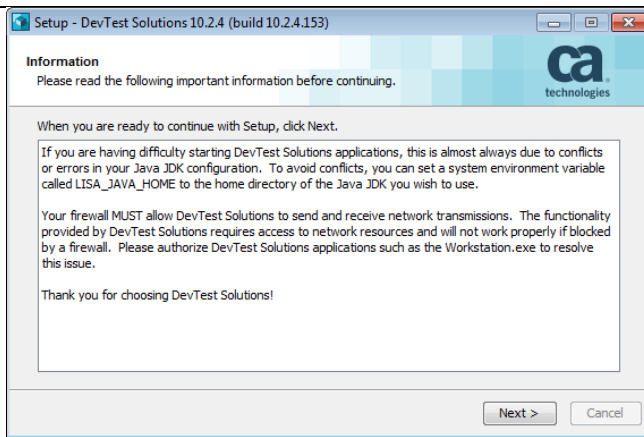


- The next screen provides an option to install Demo server.

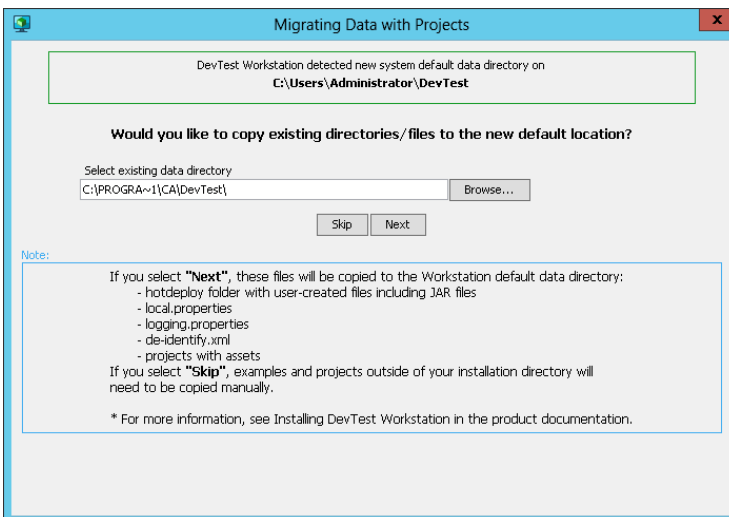


- The next few screens, we choose options to create short cuts, desktop icons etc.

- In this screen, we choose file associations.

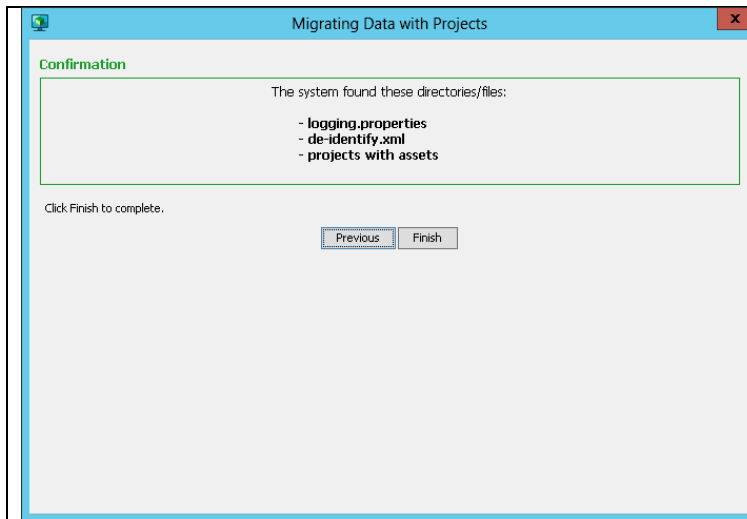


- This finishes the installation.

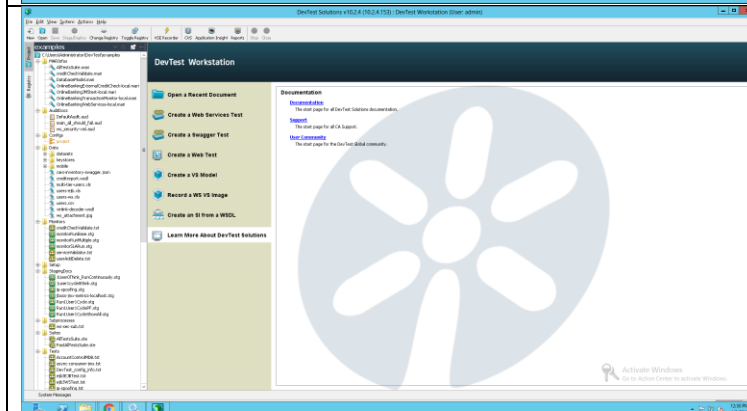


- If we are upgrading an existing instance off DevTest, then when we open workstation, this screen will come up.
- This screen helps with migrating data from existing installation into data folder with 10.2.
- We need to choose the existing data directory and click next.





- Once we choose existing data directory (existing installation path), it will show the files that were found and moved in this screen.

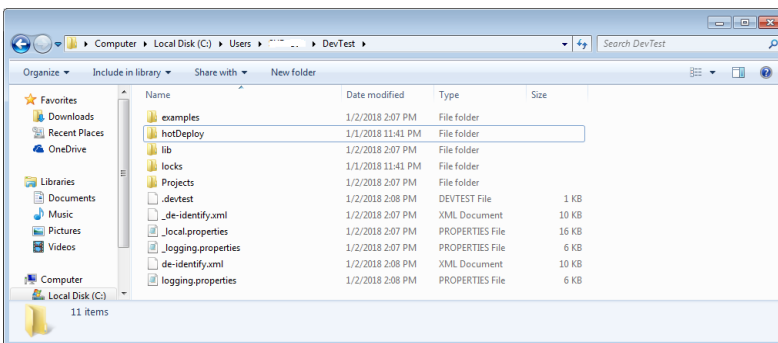


- The updated workstation will open showing the examples project from the data folder.

## Chapter 4: Folder Structure

### Data Folder

The folder structure for the data folder is as given below.



The data folder that got created in the users folder contains hotDeploy, examples, lib, Projects and config files like local.properties, logging.properties and de-identify.xml.

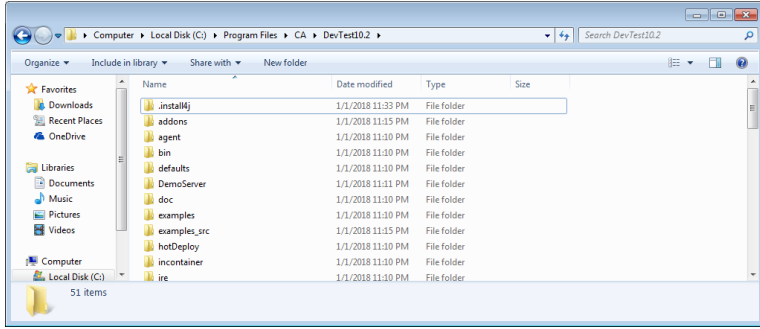
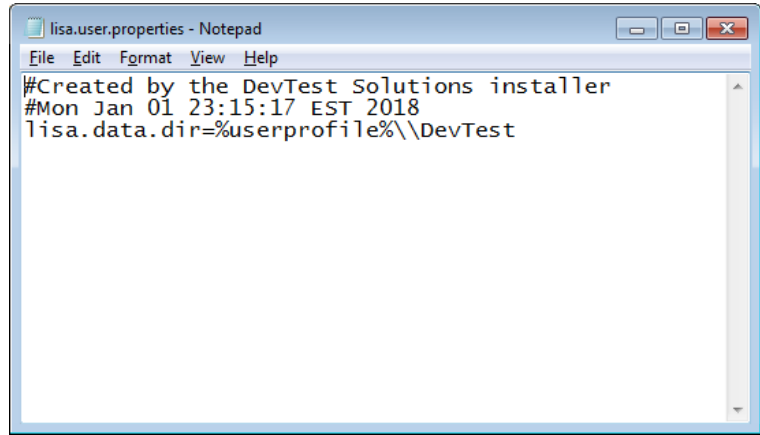
**The local.properties in the data directory takes precedence over the one in LISA\_HOME.**

Different users of the DevTest application can have their own data directory, while sharing a common DevTest installation.

In this scenario, users only need read access to the DevTest programs directory.

## Installation Folder

The devtest root installation folder is as shown below.

 <p>The screenshot shows a Windows File Explorer window with the address bar set to 'Computer &gt; Local Disk (C:) &gt; Program Files &gt; CA &gt; DevTest10.2'. The main pane displays a list of folders with columns for Name, Date modified, Type, and Size. The folders listed are: .installj, addons, agent, bin, defaults, DemoServer, doc, examples, examples_src, hotDeploy, incontainer, and ire. All folders were last modified on 1/1/2018 at 11:30 PM.</p>	<p>The devtest root folder contains all of the files and folders.</p> <p>The properties files in the data directory takes precedence over the one in LISA_HOME. This change doesn't affect server components like Registry, VSE, Portal, Simulator, and Coordinator. Ex: local.properties</p>
 <p>The screenshot shows a Notepad window titled 'lisa.user.properties - Notepad'. The text content is as follows:</p> <pre>File Edit Format View Help #Created by the DevTest Solutions installer #Mon Jan 01 23:15:17 EST 2018 lisa.data.dir=%userprofile%\DevTest</pre>	<p>The folder also contains a file called lisa.user.properties</p> <p>The file lisa.user.properties contains the data directory path.</p> <p>You can also specify the location of the file that defines the <b>lisa.data.dir</b> property by setting the <b>lisa.user.properties</b> system property or the <b>LISA_USER_PROPERTIES</b> environment variable. If the property has been defined as a system property, the system property definition takes precedence.</p>