



CA Gen Project Trends from Around the World

Contact Information



Jumar Solutions Limited
Jumar House
Pinewood Business Park
Coleshill Road
Solihull B37 7HG
United Kingdom
Tel: +44 121 788 4550
Fax: +44 121 788 4551
www.jumar-solutions.com

Paul Hughes

Business Development Director
Mobile: +44 7827 969069
Email: paul.hughes@jumar-solutions.com

Jumar Solutions Overview



The leading global
resource, services and
solutions partner to the
CA Gen community
and
CA Technologies



3

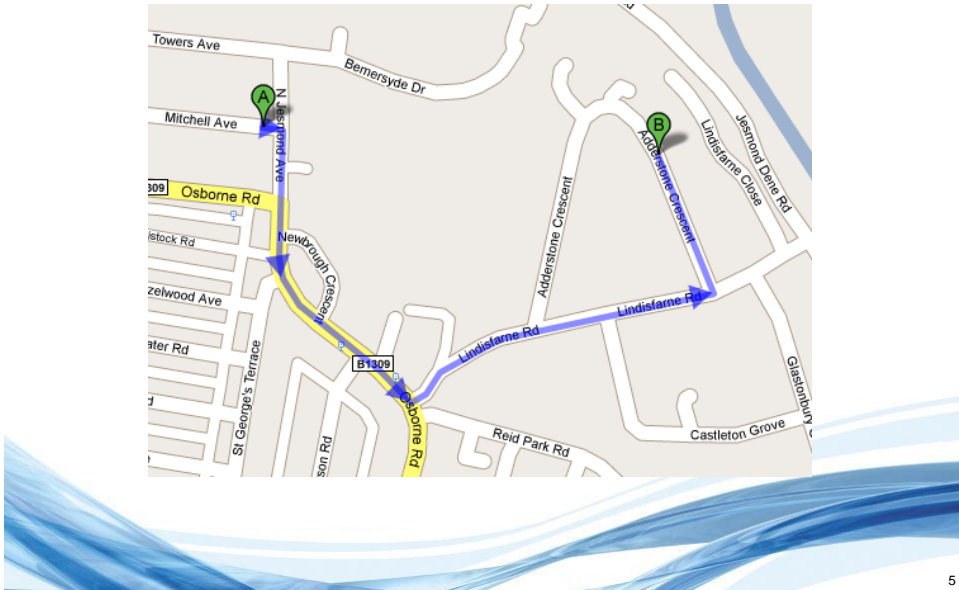
The General world



- CA Gen applications have served 'the company' well for many years
- They were 'leading edge' at the time but the leading edge has moved forward
- Modernisation is now becoming more of a requirement
 - Take advantage of new technologies and interfaces
 - Provide flexibility in options going forward
 - Upgrade needed for compliance
- Perceived cost of change to "non-Gen'ers"
 - Pushing modernisations to start from scratch
 - Can result maintaining new and old
- Model driven provides basis for rapid change
 - Exploit current investments
 - Exploit context focused automation
- Time and Money limited in current economic climate

4

A Modernisation Roadmap



5

What Is Model Analysis?

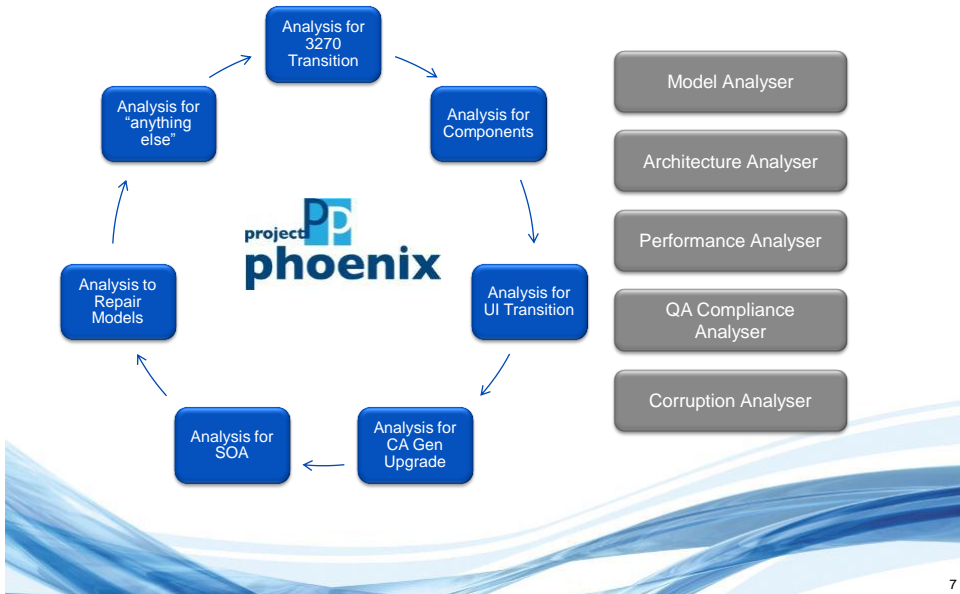


“The extraction, manipulation and querying of low-level data describing CA Gen models, usually with a view to **determining their fitness for a specific purpose** and enabling a subsequent project to be planned with accuracy and confidence.”



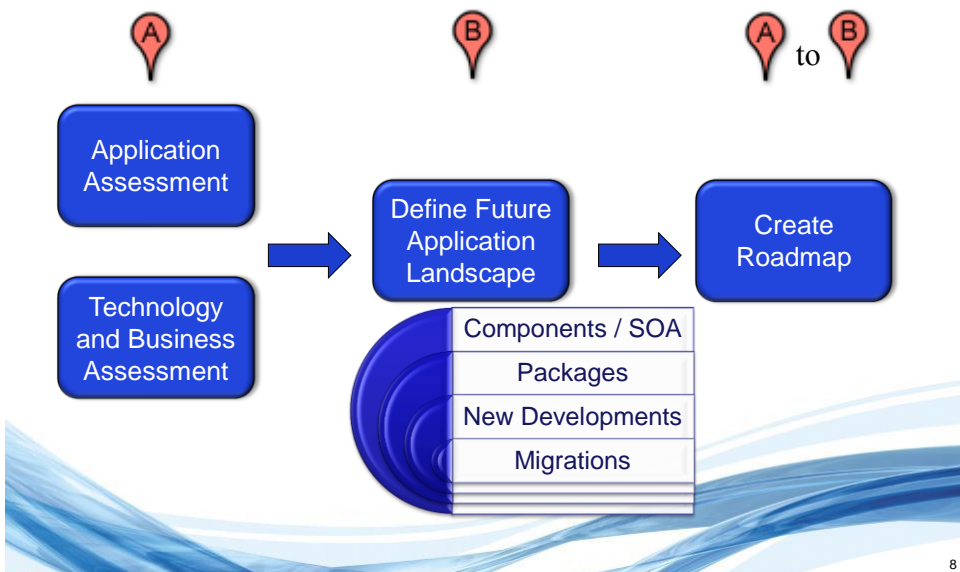
6

Simplification Through Automation



7

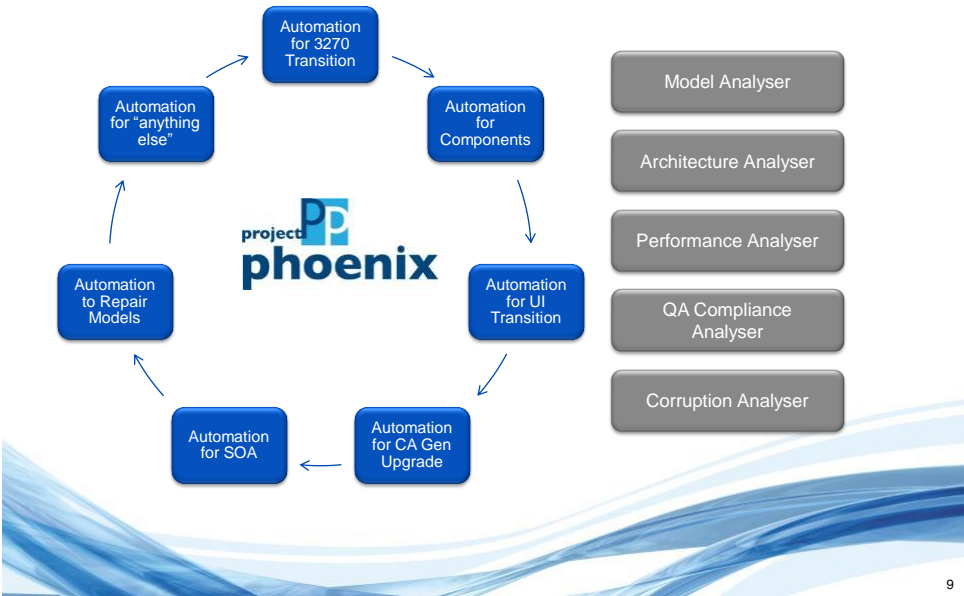
Modernisation Roadmap



8



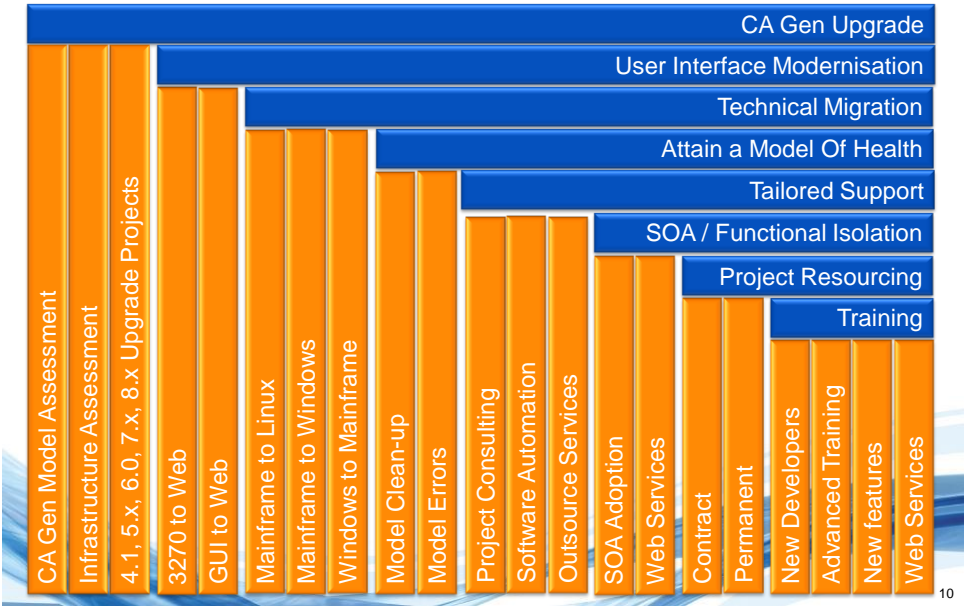
Simplification Through Automation



9

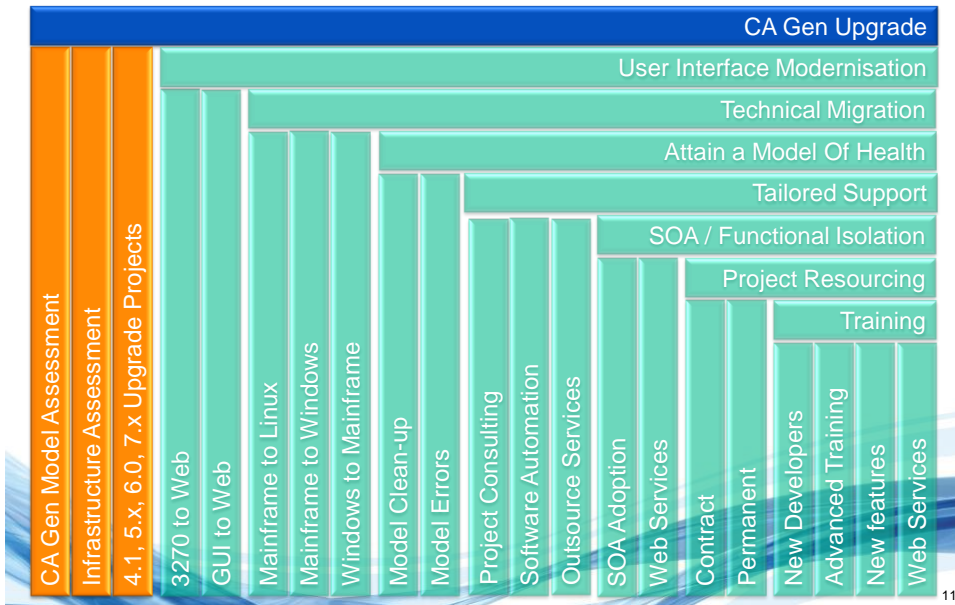


Project Trending



10

Project Trending

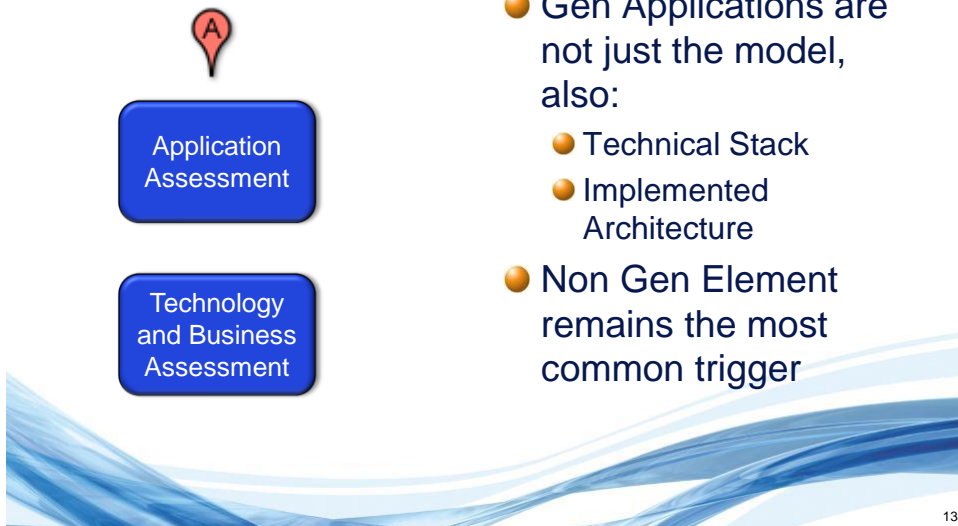


CA Gen Upgrade



- CA Gen is the “Well Behaved Child”
- Common Triggers
 - Governance requirements to be on supported software
 - EOS / EOL of Supporting Elements within Technical Stack
 - Z/OS, DB2, PA-RISC, Itanium / Oracle, ..., ...
- Less Common Triggers
 - CA Gen EOS / EOL
 - CA Gen New features / Functional enhancements
- Issue
 - The Cost of upgrade just to “stand still”

The Steps of an Upgrade



13

Automated Application Assessment (Model Focus)



- Upgrade impacts
 - Changed behaviour
 - Now "Working as Designed"
 - Same behaviour as other platform
 - New Statements
 - Testing impact
- How long to remediate?
- How long is the project?
- Assessment focus
 - Features (new & old)
 - Model Clean-up
 - Mode Errors
- Additional Items
 - Automation to fix issues en mass
 - Detailed Upgrade project plan

14

Technology and Business Assessment



- Upgrade Impacts
 - New versions
 - Support combinations
 - EOS / EOL of 3rd party software
 - CA certifications
 - Current and planned
- Assessment Focus
 - Architecture Review
 - 3rd party software support matrix

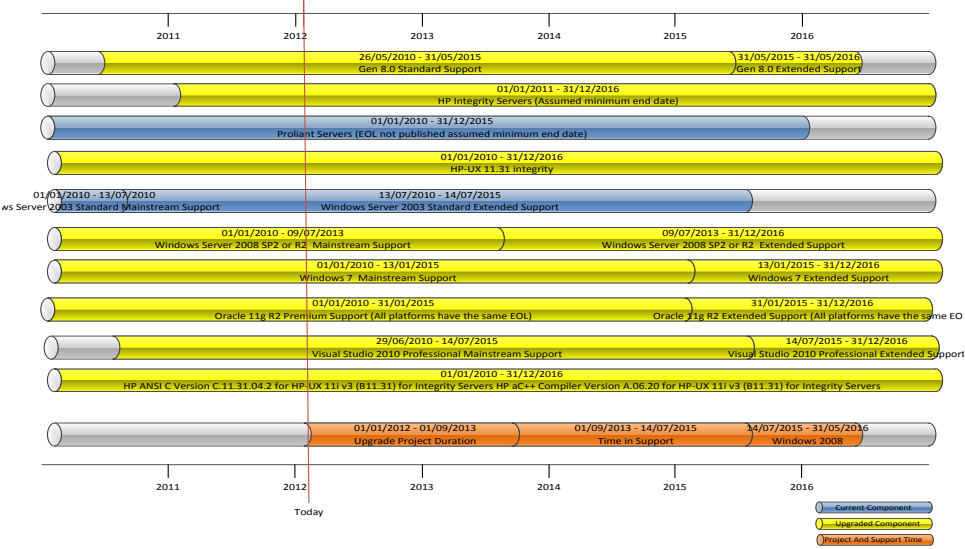


15

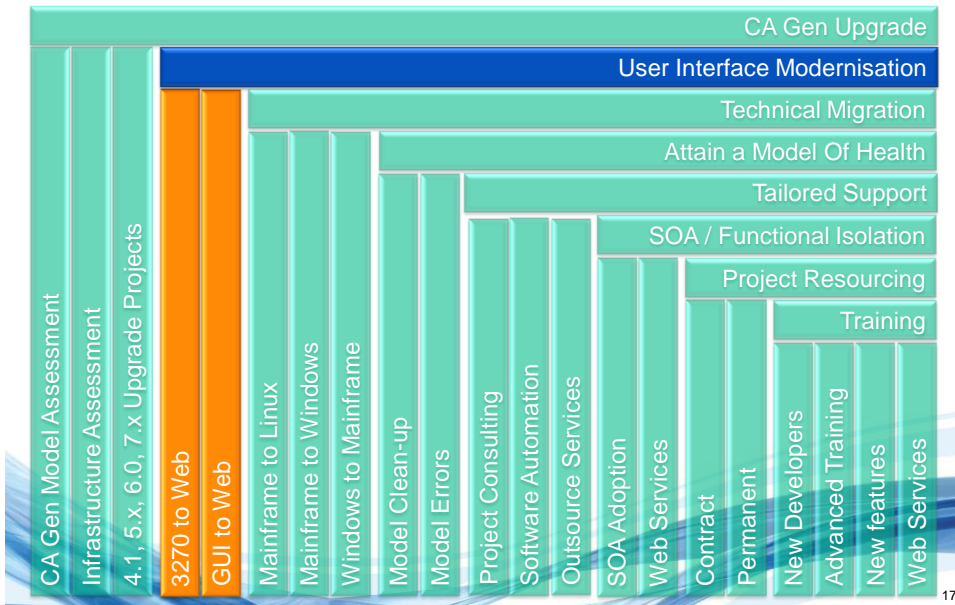
Technical Infrastructure



Option 4 Support TimeLine



Project Trending



User Interface Modernisation



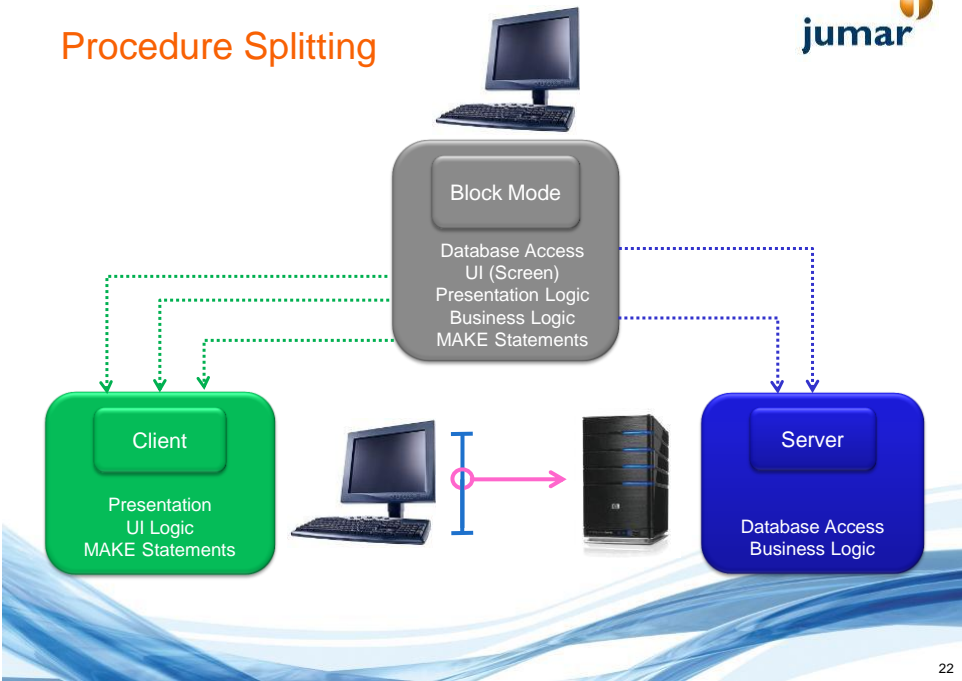
- Applications need to meet the demands of modern technology
- Web is at the centre of that demand
- Existing Gen application exploiting the web
- A number of engagements throughout the year on
 - 3270 to Web
 - GUI to Web (Fat Client and C/S)
- Solution / Approach
 - Modernisation assessment
 - Deliverables Web readiness report
 - Features not supported (events etc), replacement solutions for OCX (Calender, Grid controls most common)

Example: Block Mode Modernisation

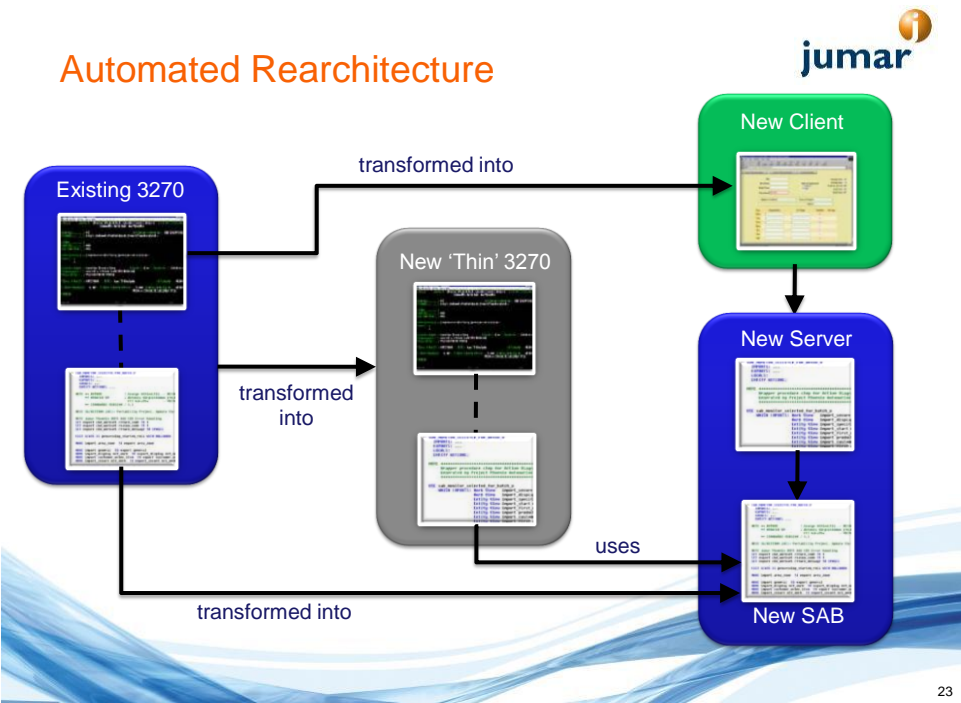


21

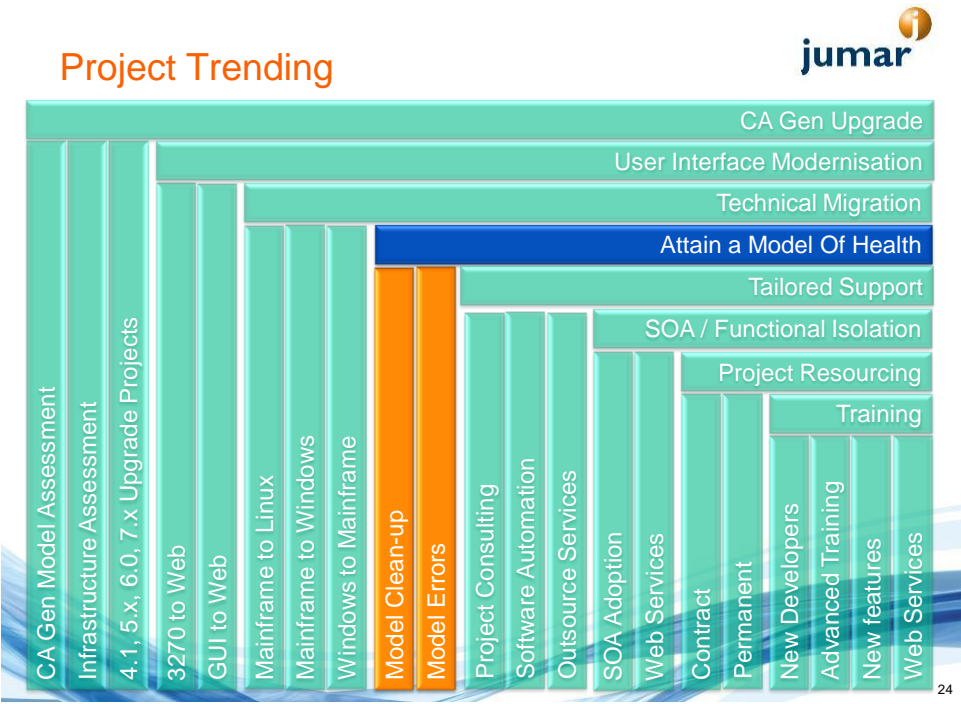
Procedure Splitting



22



23



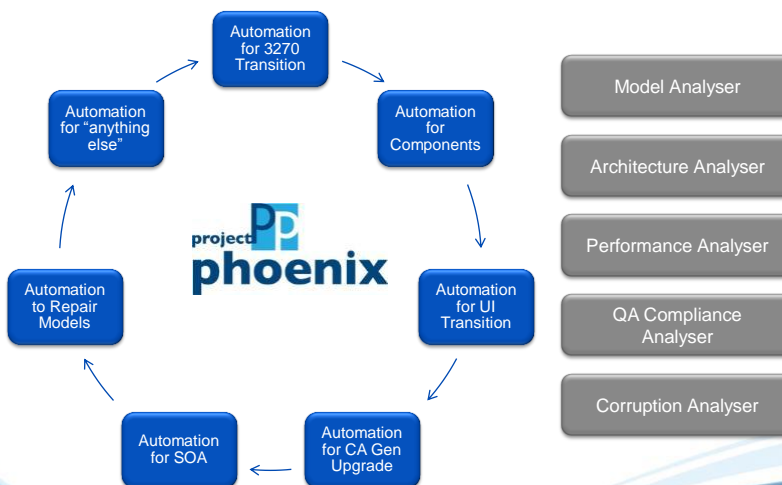
24

Attaining a Model of Health

- Problem Definition
 - Decades of development
 - Growth of unused artefacts
 - Unexplained inability to perform certain activities
 - Development efforts between teams
- Complexity Analysis
 - Change budget planning, right size teams, target testing effort
- Clean-up
 - From the large to the small
 - Unused objects - Action Blocks, Exit States, Prompts, etc.
 - To the serious
 - Model Errors

25

Simplification Through Automation



26

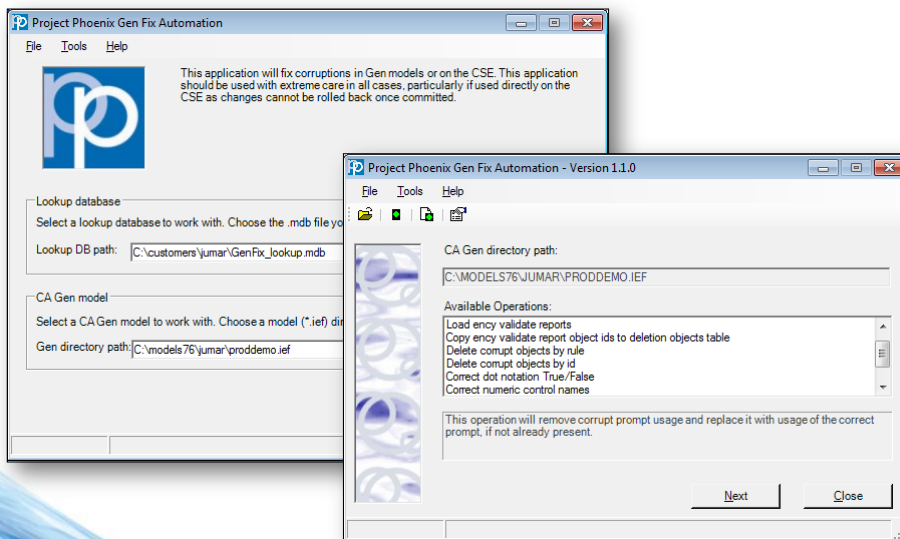
The Checks



- Complexity measurement
 - Comparing models
 - Customised algorithms – Measuring most important components
 - Nested level
 - Notes to statements
- Documentation
 - Model Reporter to build that documentation
- Model Corruptions
 - Just when you do not need them! During major project... ..

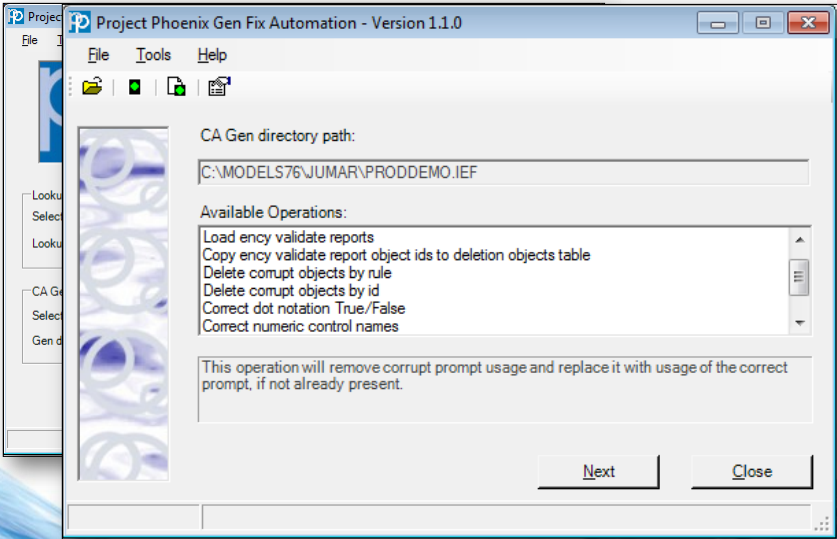
27

Investigate



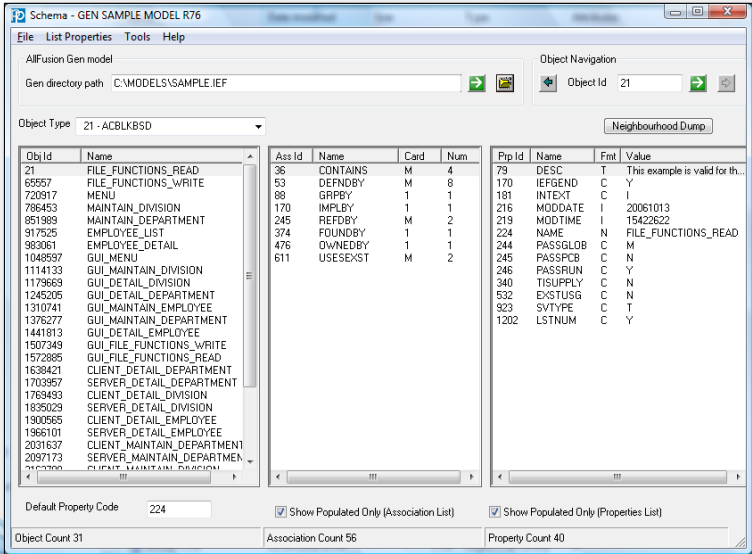
28

Investigate



29

Investigation: the Schema tool



30

A Container Shipping Company



- 36,000 corruptions identified through investigation phase
- Remediation 4 days over two weekends
- Automated solution and verification
- Baseline for the identification of route cause
 - Model Management Approaches
 - 3rd party tools, internally developed utilities
 - CA Gen Toolset
- Unlocked subset ID's
- Unlocked "Unused" Action Blocks
- Healthy Models

33

Healthy Models



- Corruptions have been with us all our "IEF lives"
- They can lie dormant for many years without any visibility
- Hit us when we really do not need the pain
 - Updating models or areas of models which have not been used for a period of time
 - During change programmes such as upgrade, modernisation, replatforming

34

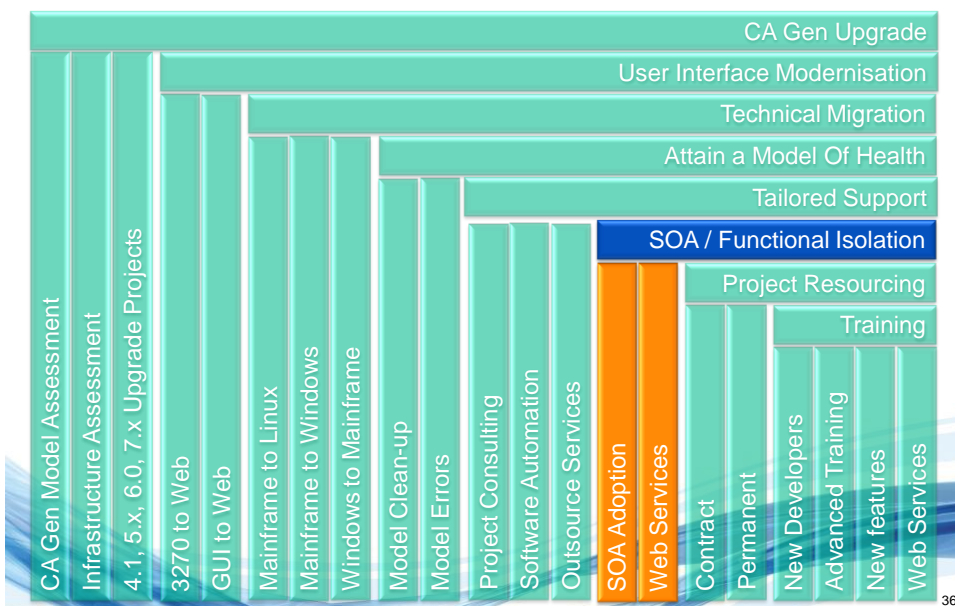
Housekeeping



- De risk the uncertainty
- Get your models checked regularly as part of natural model management strategy
- Move any what is needed
- Identify what is causing corruptions
 - Age of the models, Model management, 3rd party tools, in-house utilities
- Fix serious corruptions found
- Move from reactive to proactive

35

Project Trending



36

SOA / Function Isolation



● Problem

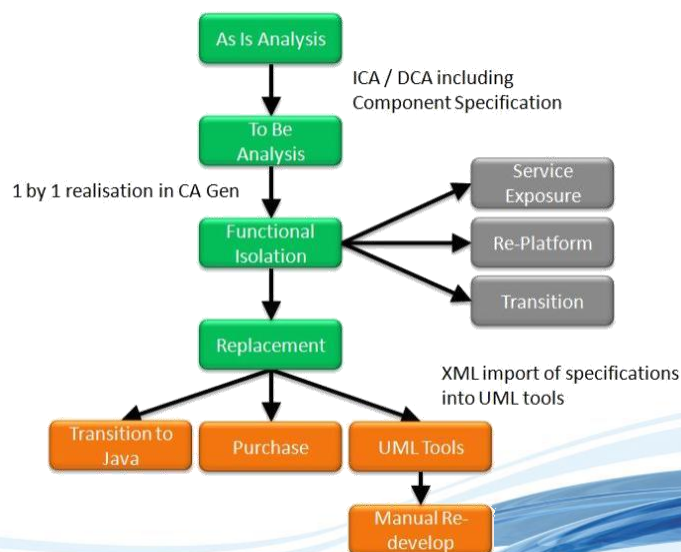
- Tightly coupled applications
- “Component” hidden within large applications
- Restricting agile release strategies
- Large models becoming cumbersome

● Trend

- Breakup complex systems
- Exploit Gen within a mix environment
- Participation in wider multi level technology transactions
- Web services exploitation

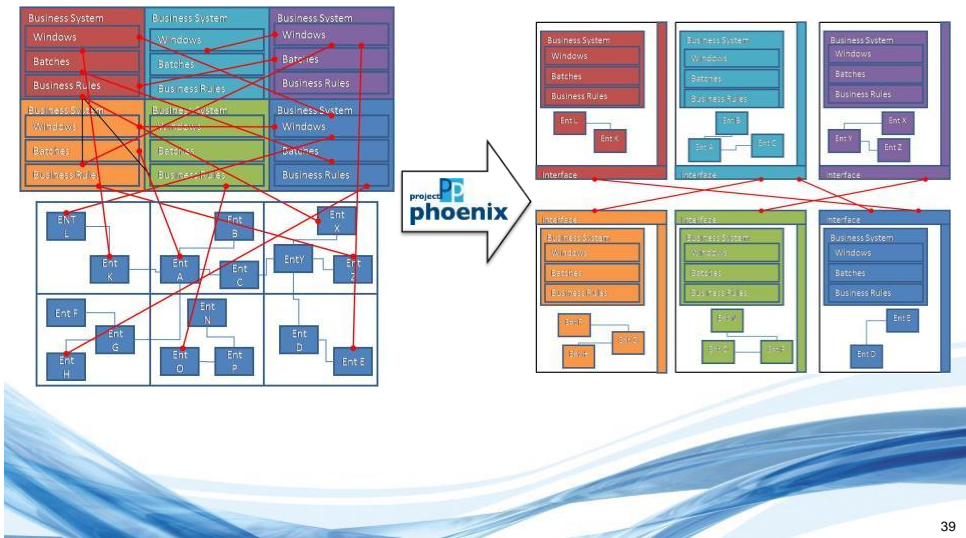
37

Approach Through Automation



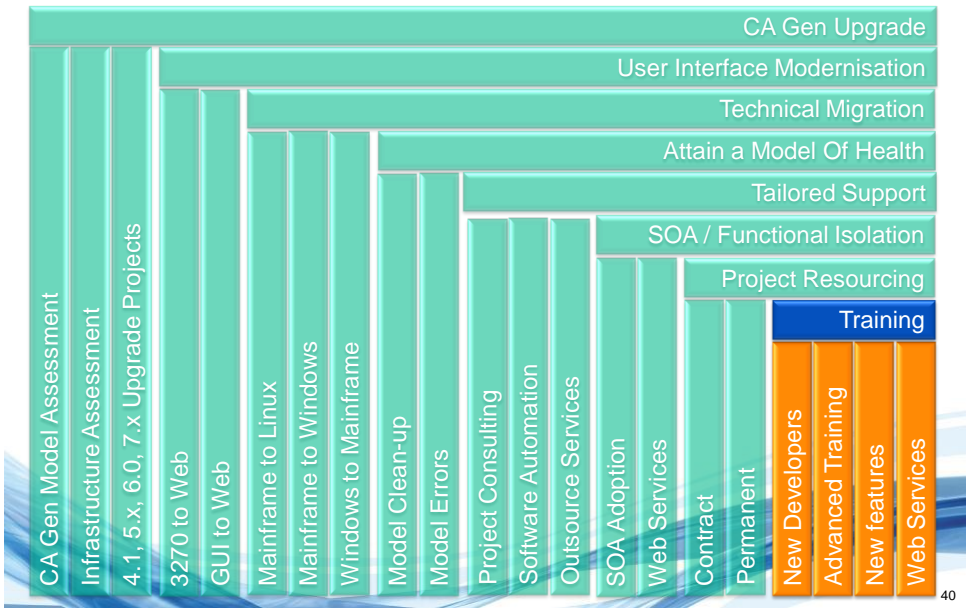
38

Componentisation



39

Project Trending



40

Training



- Last 12 months showed good increase in the numbers of **new** CA Gen developers being trained
- New Graduates being hired
- New staff taking on CA Gen systems
 - Through Outsource
 - Resurrection of the applications visibility



41

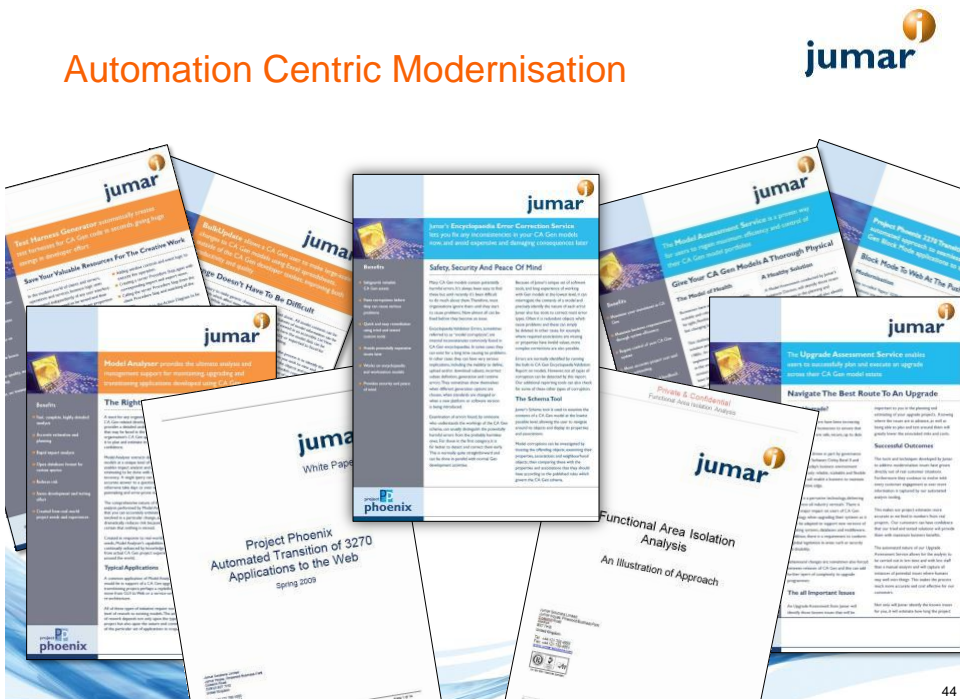
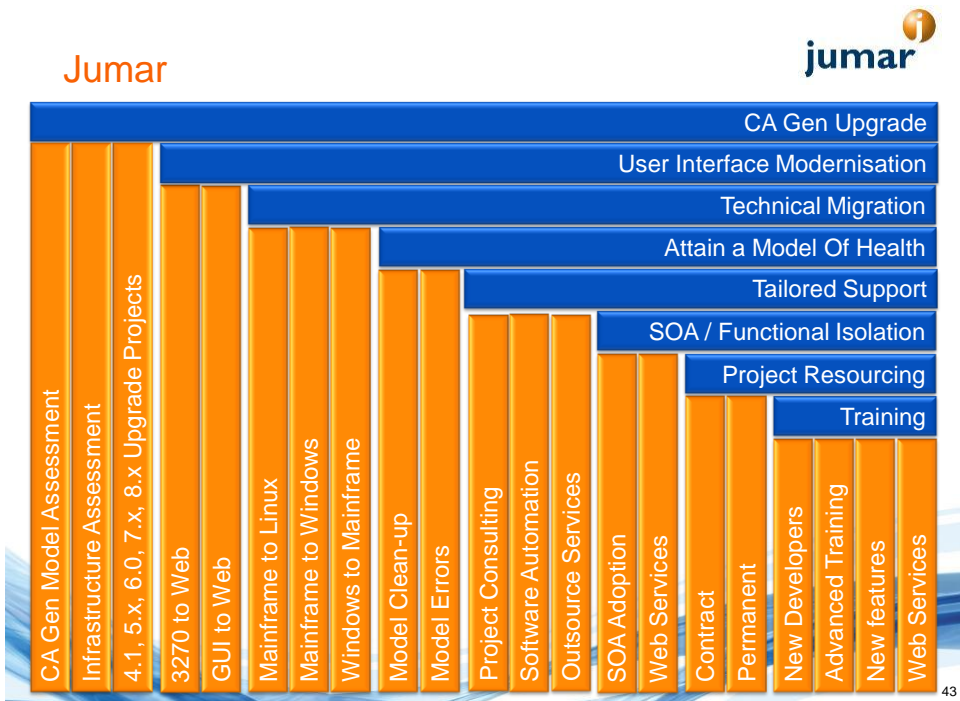
CA Gen



- Remains in use globally
 - Critical business systems
- We interact with a Gen application most days
- New developers coming on board
- The modernisation of the applications key trend globally
 - Embracing the next wave of ROI
- Continue to exploit the investment in systems
- Rapid modernisation through Automation



42



Contact Information





Jumar Solutions Limited
Jumar House
Pinewood Business Park
Coleshill Road
Solihull B37 7HG
United Kingdom

Tel: +44 121 788 4550
Fax: +44 121 788 4551
www.jumar-solutions.com

Paul Hughes
Business Development Director
Mobile: +44 7827 969069
Email: paul.hughes@jumar-solutions.com

- Modernisation Strategies
- Automated Analysis
- Componentisation and SOA
- Blockmode to Web
- Planning for Projects
- Upgrade Support & Custom Automation
- Architecture Analysis
- CBD Transitioning
- 3270 Migration
- Performance & Corruptions
- GUI to Web

Blog and new Website about to launch

www.Jumar-Solutions.com

Twitter - twitter.com/JumarSolutions