



Introducing ITMS 8.5 and GSS 3.3

Damon Covey

Sr. Director Product Management





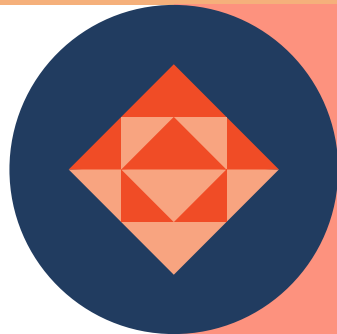
IT Management Suite 8.5



SECURITY



PRODUCTIVITY



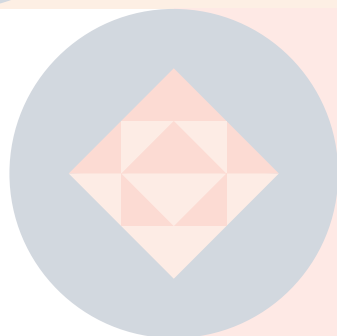
VERSATILITY



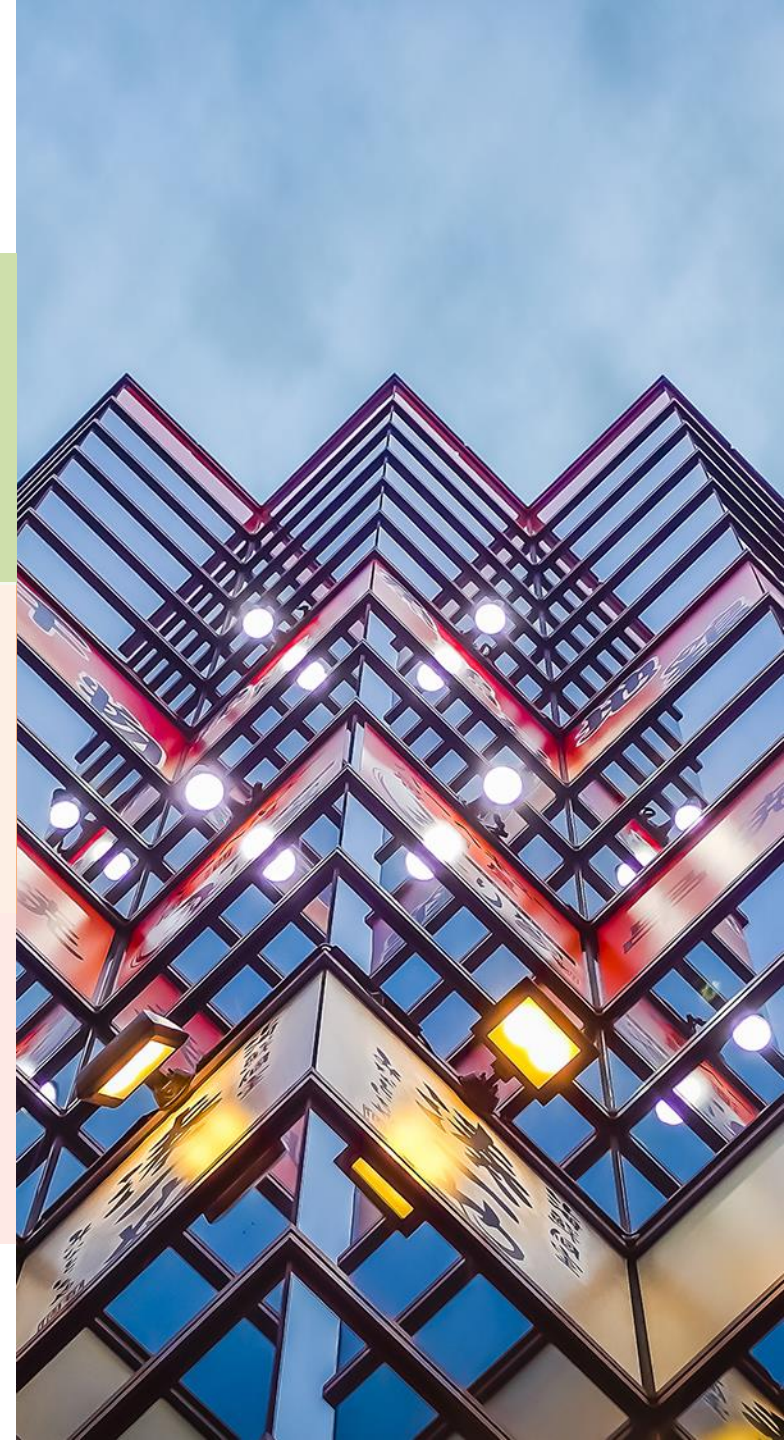
SECURITY



PRODUCTIVITY



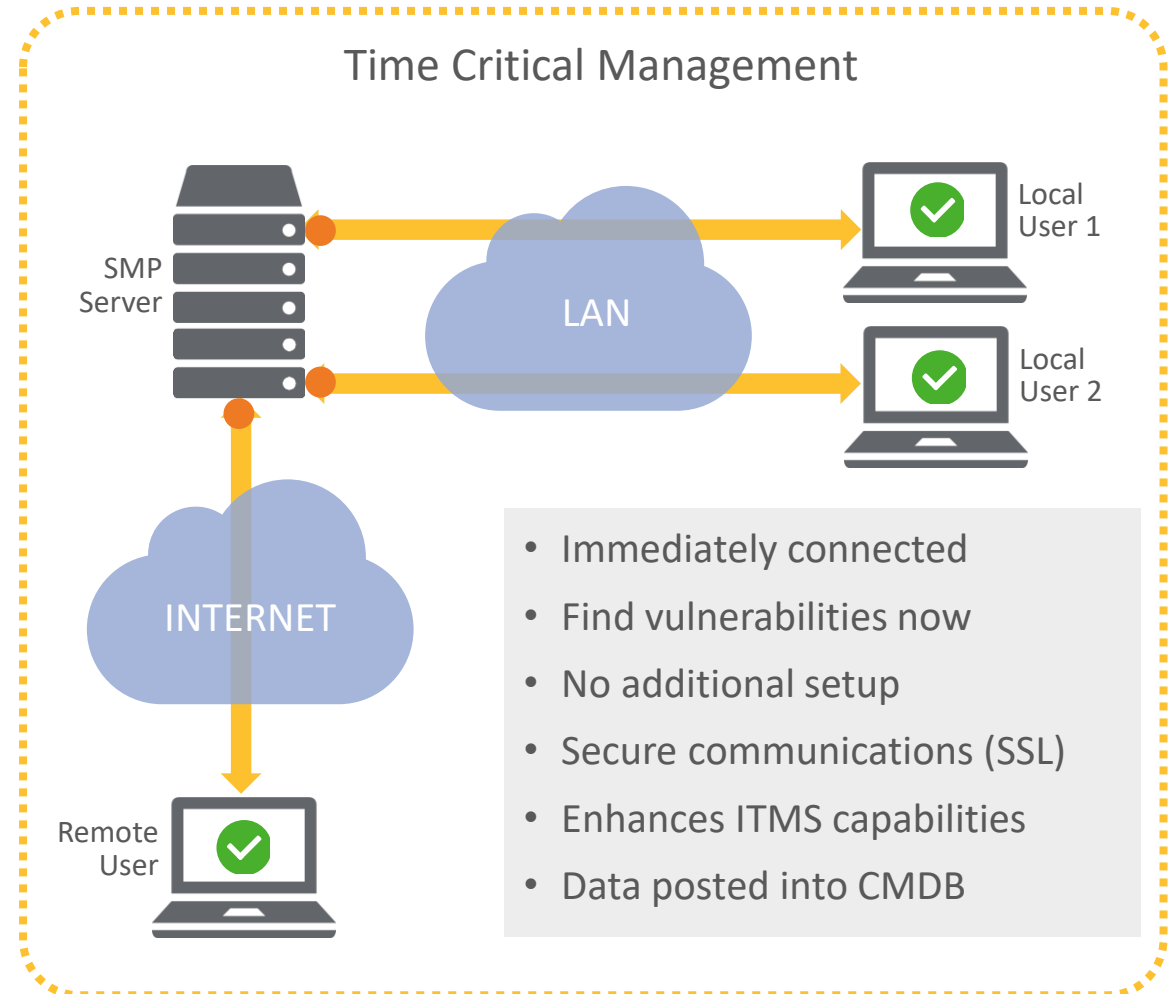
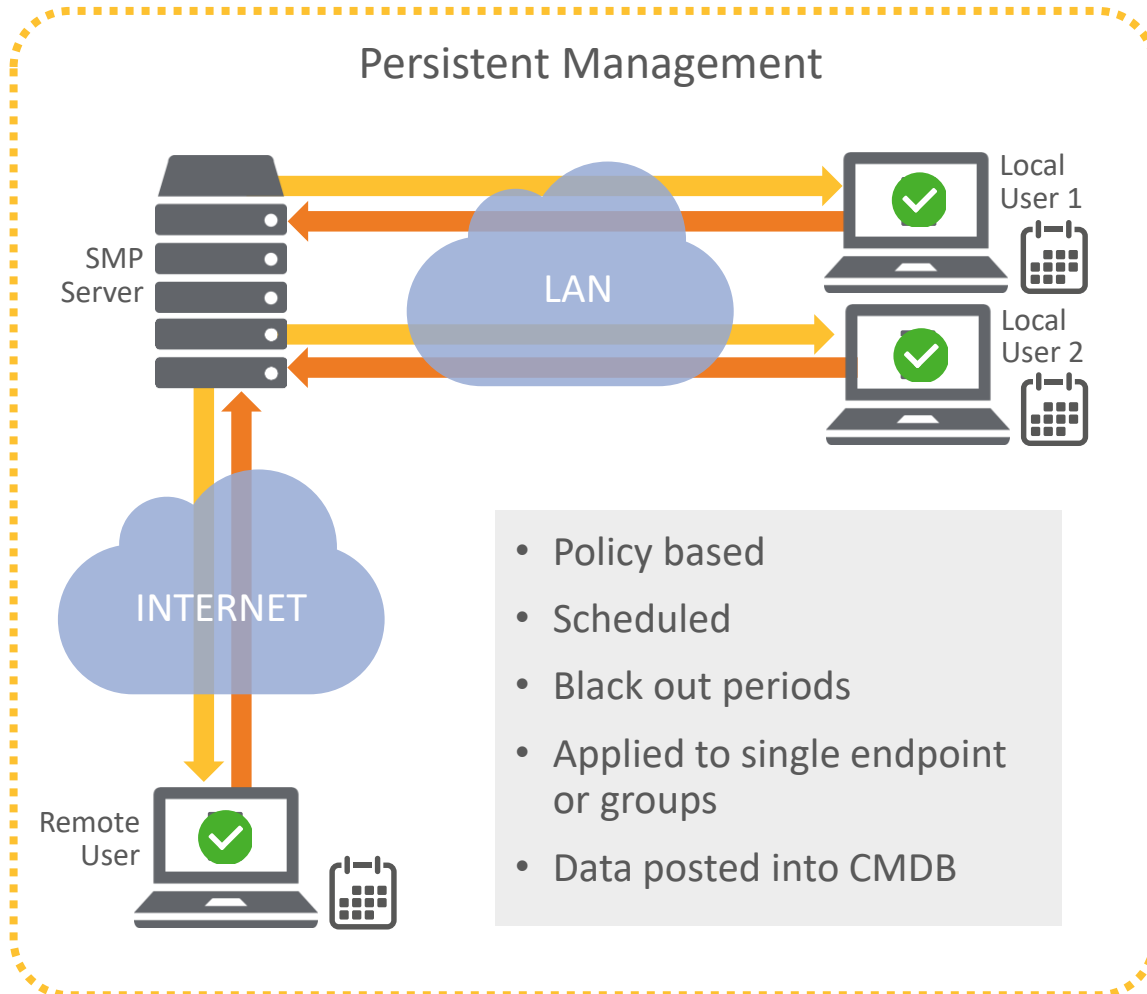
VERSATILITY



Persistent and Time Critical Management



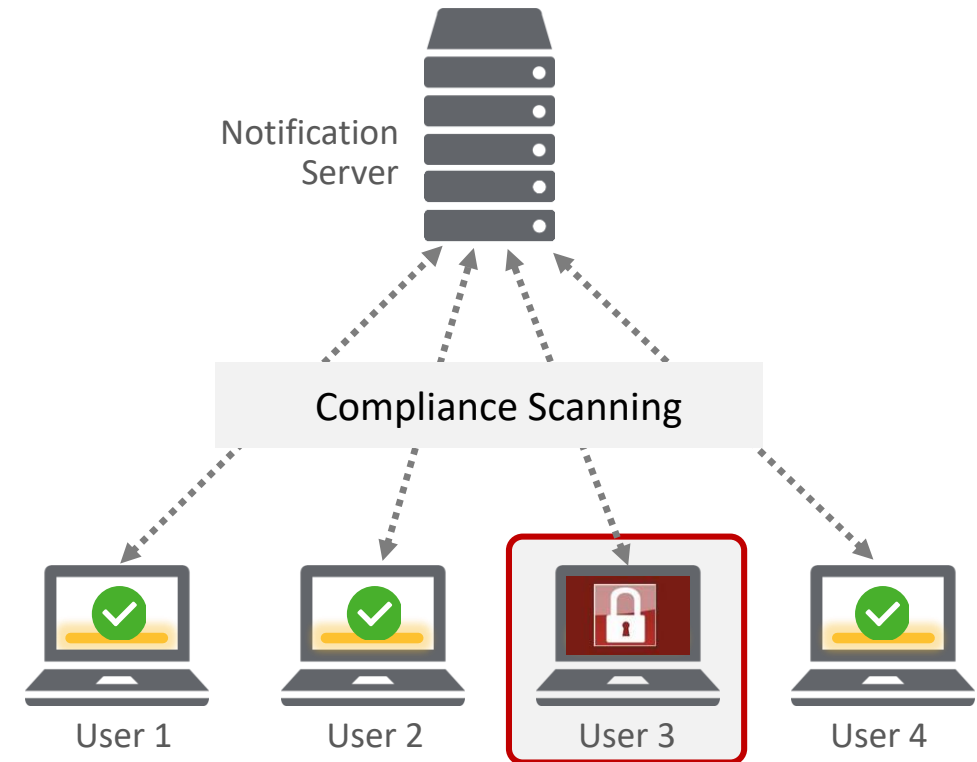
A Winning Combination



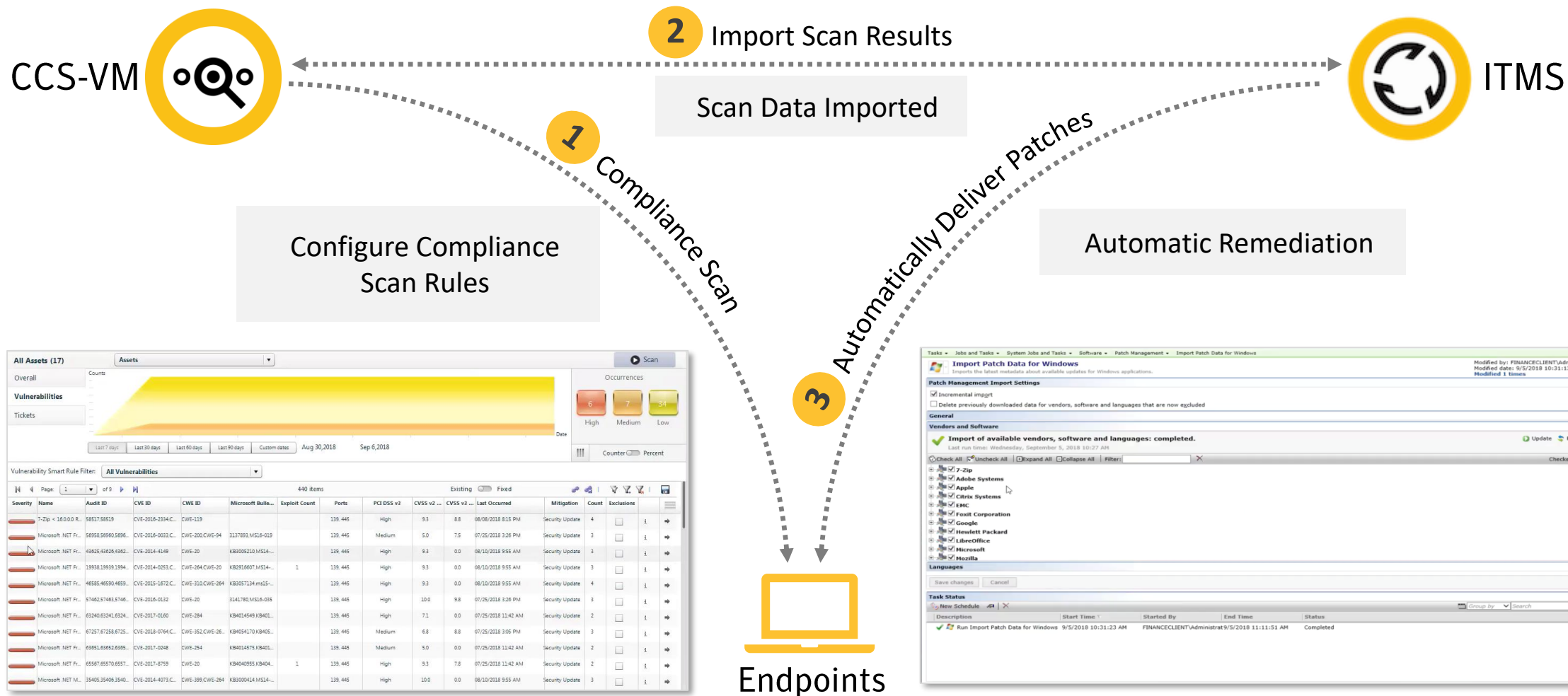
Endpoint Compliance and Quarantine



- Quarantine policies targeting specific CVE IDs
- Automated compliance scan
- Device(s) moved to/from quarantine based on compliance status
- Integrated with Symantec Endpoint Protection
- Only compliant devices allowed to connect
- Supports MS OS and 3rd party application updates
- Locks endpoint off all Network resources except remediation



Automated Vulnerability Remediation

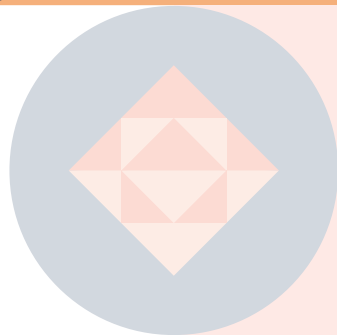




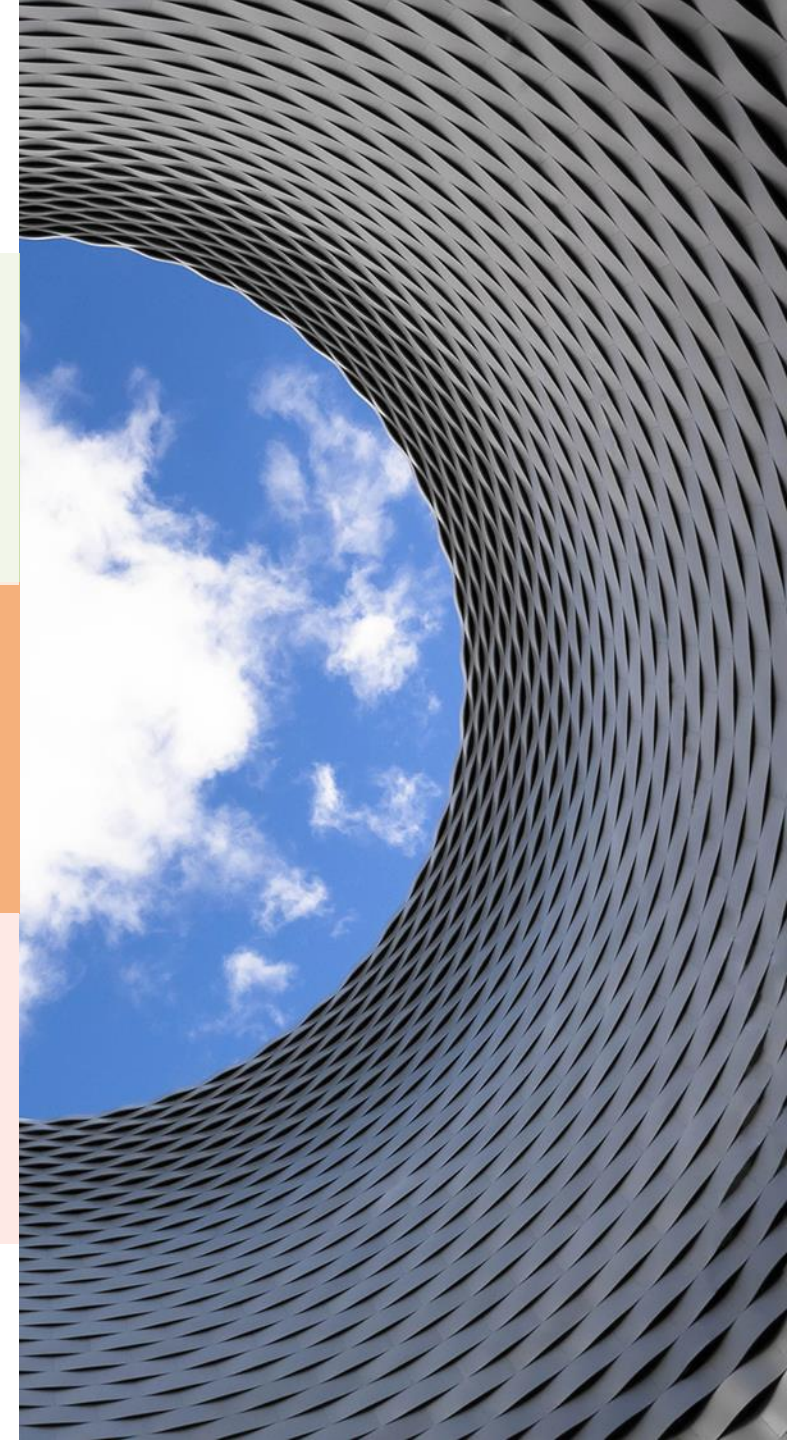
SECURITY



PRODUCTIVITY



VERSATILITY



Modern UI Workspaces



Optimized user experience

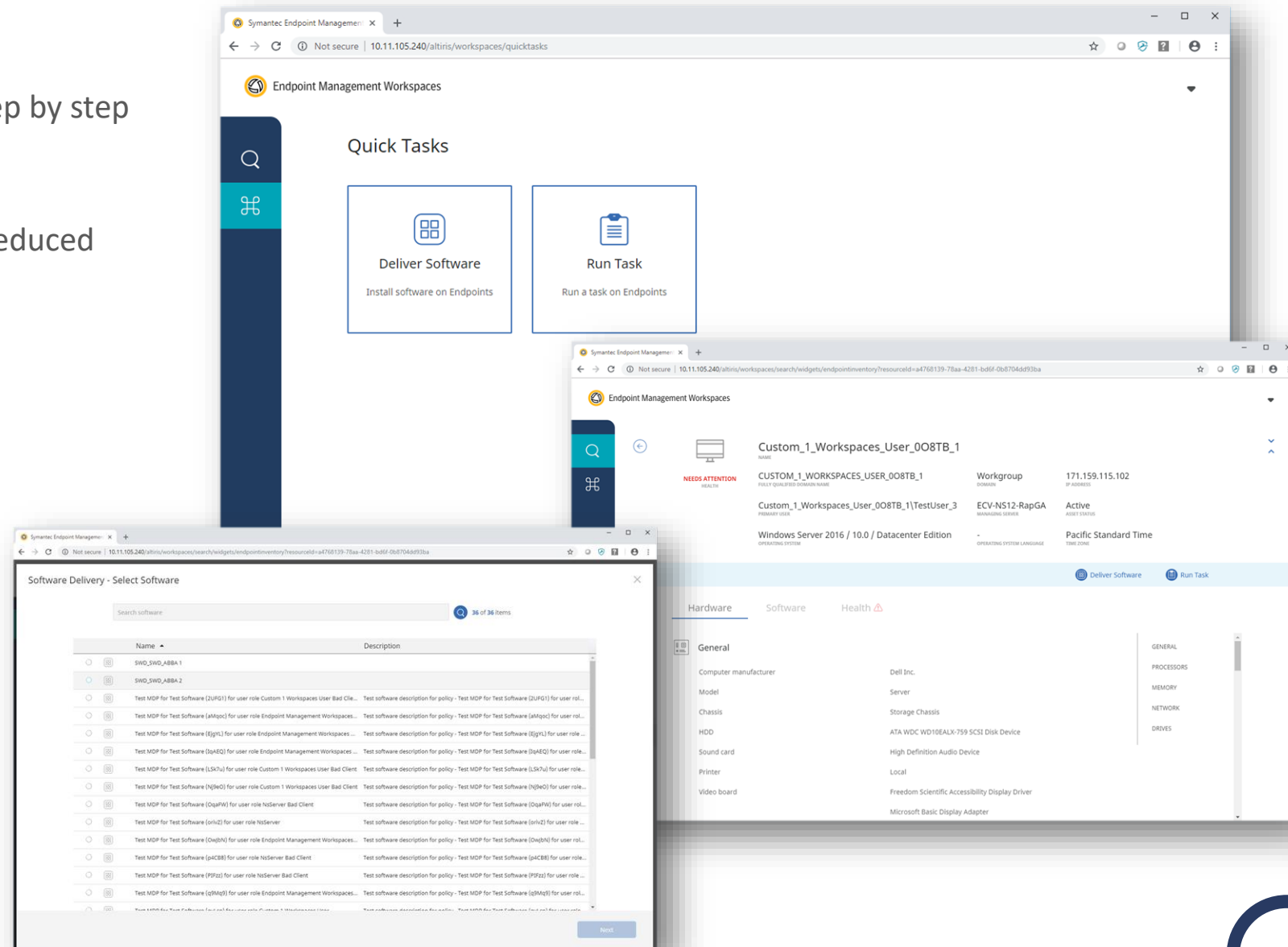
- Brand new additional UI experience with step by step flows for common frontline admin tasks
- Users only see what they need for their role
- Reduced number of screens and clicks has reduced task completion time by over 70%

Easy to learn and use

- Minimal if any training needed
- Designed to eliminate user mistakes
- Simple and fast searching in most screens

Maximize user flexibility and agility

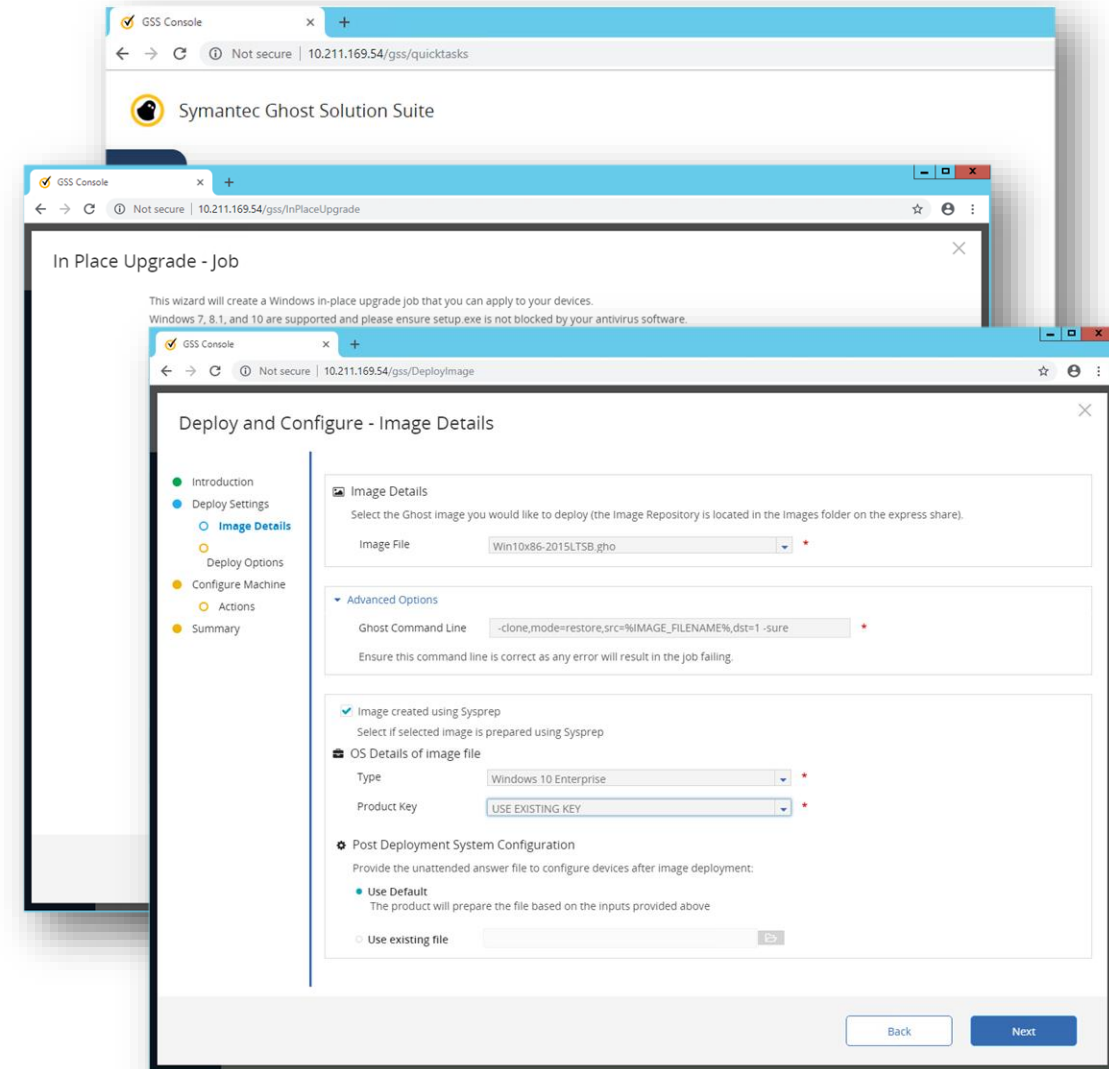
- Browser agnostic, no plugins required
- Access from any device, including Mac OS
- Obeys scoped resource permissions, users can only see what they have access to



GSS Web Console



- New Web based console
 - Scalable for entire admin staff
 - Accessible from any browser
 - Uses security permissions in existing console
 - Significantly reduce clicks to finish
- Simple quick tasks for common actions
 - Automated flows which guide the user
 - Easy for user to find the job they need
 - Modern styling for intuitive response
- Built in Wizards
 - Step by step guide to creating common jobs
 - Helps new admins quickly learn how to create jobs
 - Jobs can be deployed using web console and edited in the existing console



GSS Web Console



The screenshot displays the Symantec Ghost Solution Suite (GSS) Web Console. The main window shows the configuration for a deployment job named "TEST10". The console is divided into several sections:

- Header:** Symantec Ghost Solution Suite
- Left Sidebar:** Contains navigation links for "Computers and Groups" and "Jobs and Folders".
- Main Content Area:**
 - Computers and Groups:** Lists various computer groups, including "TEST10".
 - Job Details:** Displays information for the selected job "TEST10", including its full qualified name, MAC address (005056806268), and IP address (10.219.160.222). The operating system is "Windows 10 Enterprise 10.0.15063".
 - Jobs Table:** A table showing the status of various jobs. The table has columns for Job Name, Job Folder, Scheduled At, and Status.
- Right Panel:** A detailed configuration window for the job, showing fields for image selection, deployment options, and system configuration.

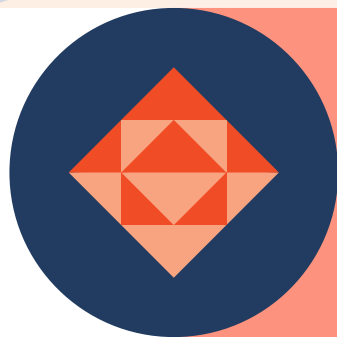
JOB NAME	JOB FOLDER	SCHEDULED AT	STATUS
Deploy-Image-SOI-Taken		2018-06-04 16:22:00	Configuring computer...
Wait		2018-06-04 14:43:00	Wait task completed successfully.
Create-Image-Sysprep-Win10-SOI		2018-06-04 12:55:00	Imaging process complete
Install Windows Automation Folder: TEST10	System Jobs/Install Jobs	2018-06-04 12:53:00	Package installation complete



SECURITY



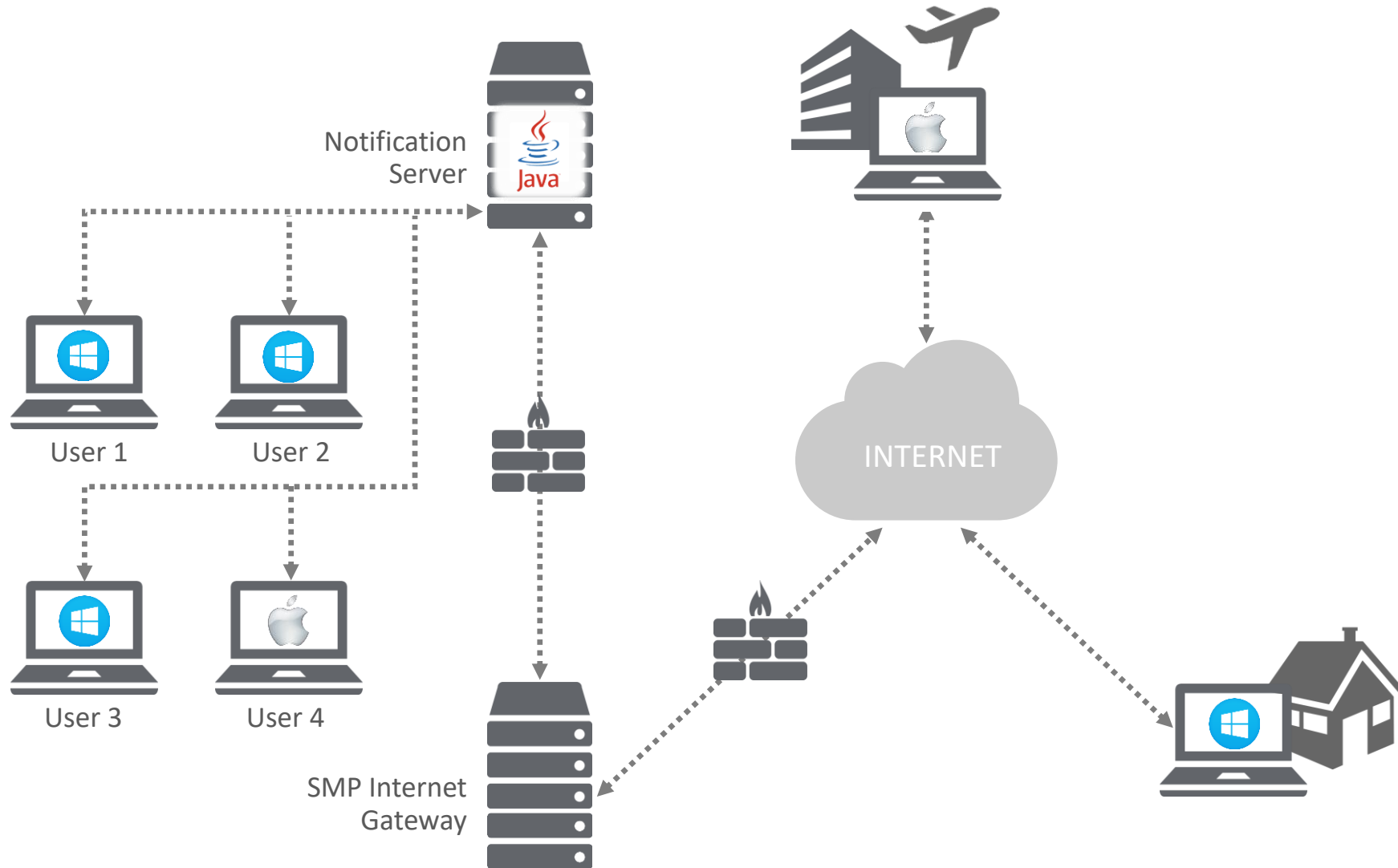
PRODUCTIVITY



VERSATILITY

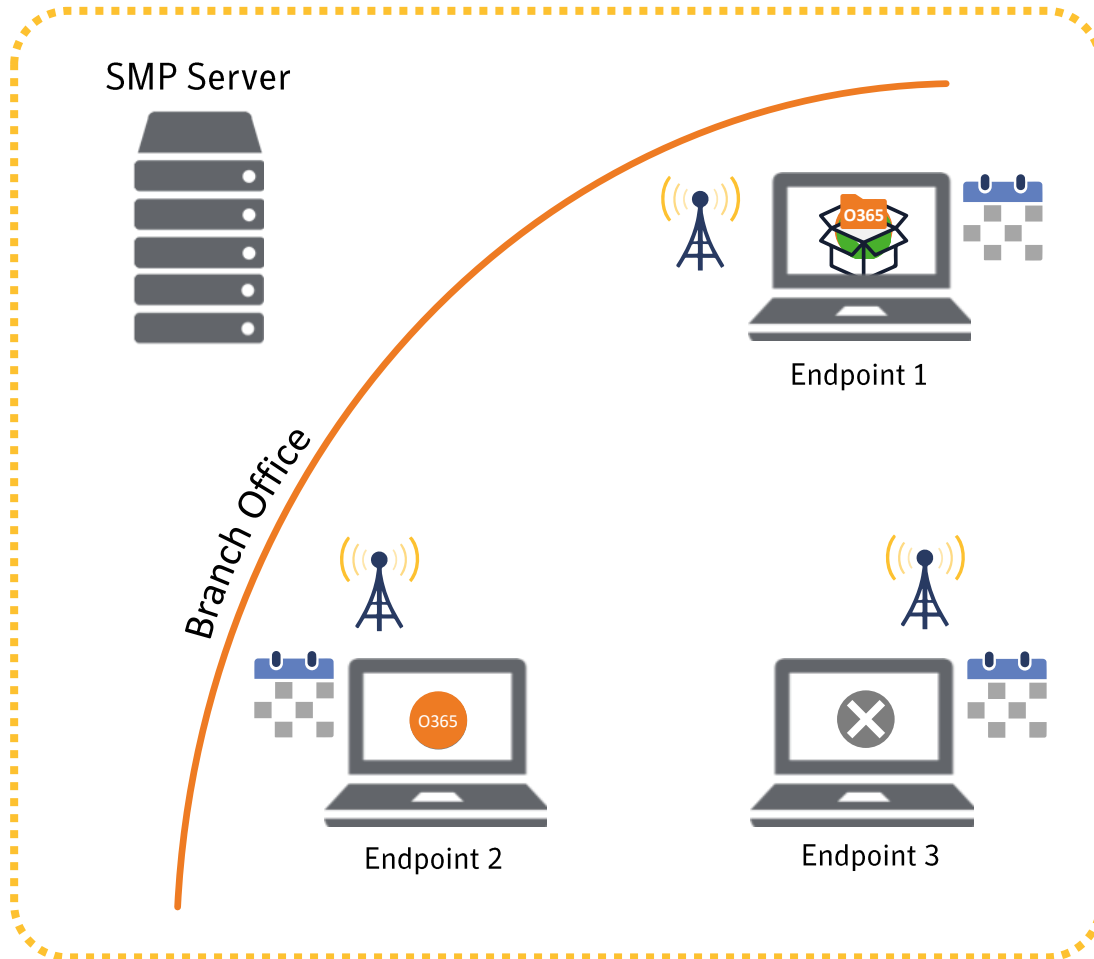


Versatile Patch Management



- ✓ Includes support for PSFx and Express updates
- ✓ Heterogenous (Mac and Windows)
- ✓ Inside and outside perimeter
- ✓ 3rd Party Applications
- ✓ Flexible compliance reporting
- ✓ Remote Endpoints and Locations

Peer-to-Peer Optimization for Office 365 Updates



1. Endpoint needs new Office365 patch/update
2. Sends request to peers to check availability
3. If no endpoints have current update, it is downloaded and installed from server
4. Endpoint 1 notifies others of proactively of update availability
5. Endpoint 2 requests Office365 patch/update at a later date
6. Endpoint 2 gets package from Endpoint 1 directly

ITMS 8.5 Early Adopters



Jesse Kozikowski
Infrastructure Architect
Aspirus



Michael Magyar
Server Engineer
Janney Montgomery Scott LLC



Yashim Greene
Endpoint Engineer
McKesson Specialty Health –
The US Oncology Network



Marc Yee
Sr. IT Service Manager
Symantec

Learn More...



IT Management Suite 8.5

- [Webinar](#)
- [Videos and Slides from Technical Workshop](#)
- [Data Sheet](#)
- [Release Notes](#)
- [Documentation](#)
- [Free Trial](#)

go.symantec.com/manage

Ghost Solution Suite 3.3

- [Webinar](#)
- [Videos and Slides from Technical Workshop](#)
- [Data Sheet](#)
- [Release Notes](#)
- [Documentation](#)
- [Free Trial](#)

ghost.com



Thank You!

