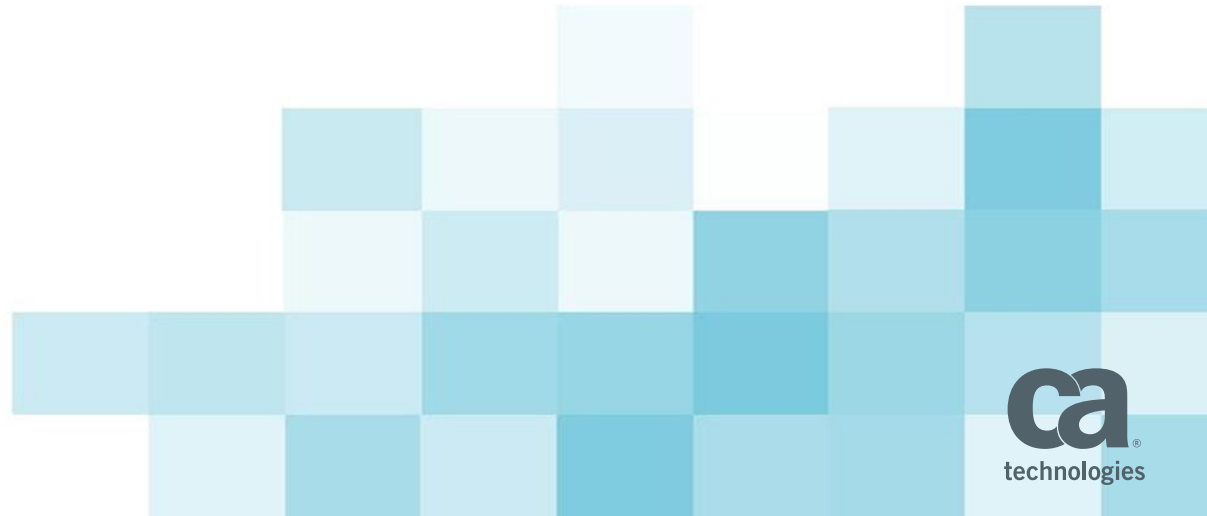


# CA Single Sign-On 12.6

What's New

**December 6, 2016**



# Contents

- 1 **PRODUCT & RELEASE VALUE**
- 2 **COMPONENTS IN THE RELEASE**
- 3 **FEATURES & BUSINESS NEEDS ADDRESSED**
- 4 **OTHER IMPORTANT NEWS**
- 5 **WHAT'S COOKING ON THE VALIDATION SITE**
- 6 **Q & A**

# What is CA Single Sign-On?

*One Login = Access to Multiple Applications*



*Regardless of what device is used, or  
where applications reside – on-premise or in the cloud*

# But it is much more than just one login...



## AUTHENTICATION MANAGEMENT

---

- Broad authentication credential support
- User directory mapping and chaining
- Step-up authentication, levels, fall backs, password services



## IDENTITY FEDERATION

---

- Browser and document-based federation
- Social media registration and login
- Standards-based (SAML, WS-Fed, OAuth)



## CENTRALIZED ADMINISTRATION

---

- Centralized user, group and policy administration
- User self-service
- Delegation of permissions



## POLICY-BASED AUTHORIZATION

---

- Flexible access policies based on user, time, location, etc.
- Risk-based authorization
- Enterprise scalability (100M+ users)



## SINGLE SIGN ON

---

- Cross-domain single sign-on
- Security zones and single logout
- Session Assurance to avoid session hijacking

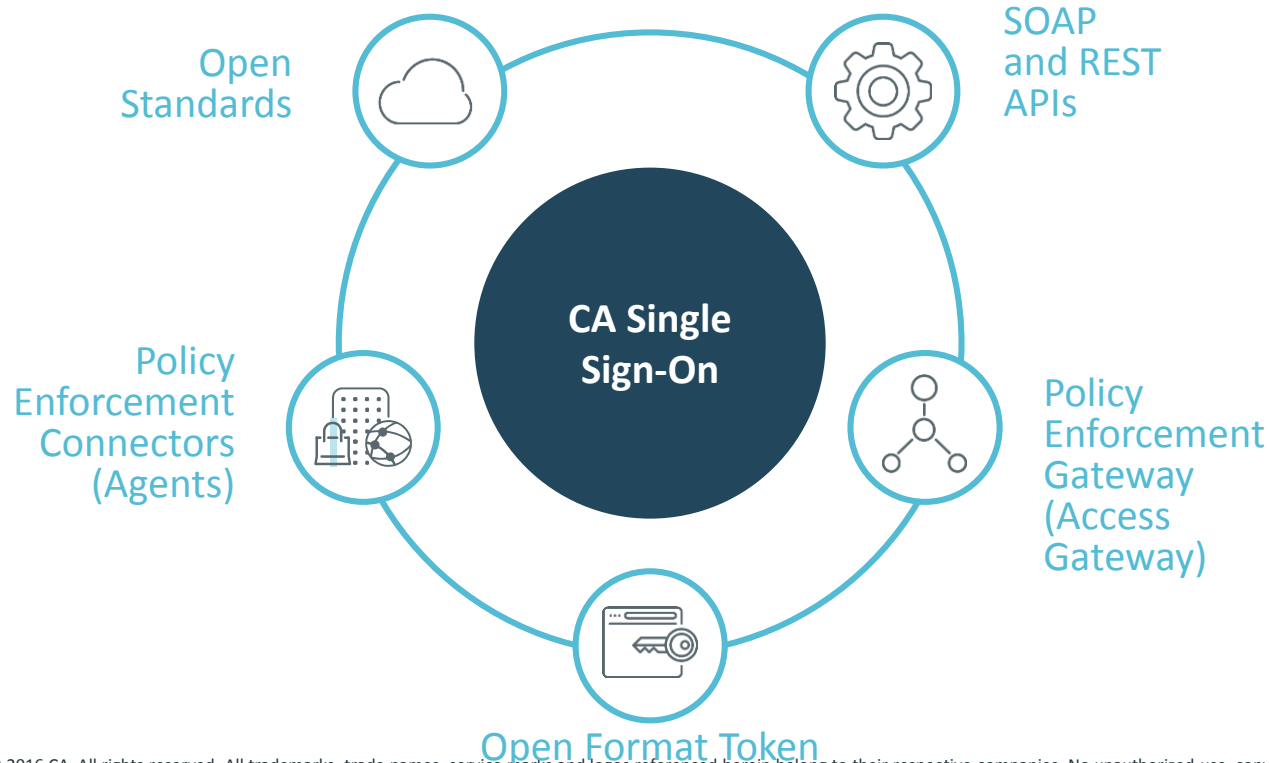


## AUDITING AND REPORTING

---

- Consolidated user activity tracking
- Auditing to files or RDBMS
- Configuration of events-based audit

# Flexible Solution to Meet Many Needs in a Single Deployment



© 2016 CA. All rights reserved. All trademarks, trade names, service marks and logos referenced herein belong to their respective companies. No unauthorized use, copying or distribution permitted. Please note that this presentation is for your informational purposes only does not serve as any technical user guides or documentation. There is no direct or indirect warranty provided pertaining the products and actual use may vary from the illustrations provided.

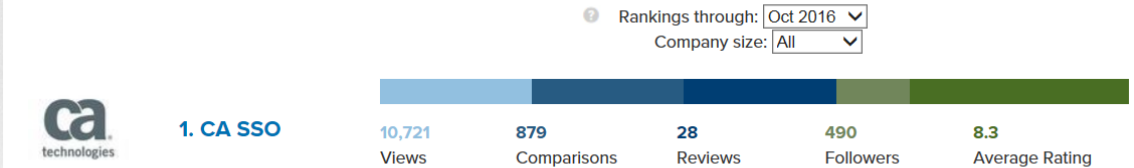
# Product Value

## Business Problems Addressed

- Controlling access to information resources
- Reducing cost of managing access
- Enabling end user productivity

### Best Web Access Management Vendors

Over 181,102 professionals have used IT Central Station research on enterprise tech. Here are the best Web Access Management vendors based on product reviews, ratings, and comparisons. All reviews and ratings are from real users, validated by our triple authentication process.



Src: <https://www.itcentralstation.com/categories/web-access-management>

# Increasing Product Value



More application  
access use cases



Lowering the TCO  
by simplifying the  
solution



Improving the  
solution's security

## Business Problems Addressed

- Controlling access to information resources
- Reducing cost of managing access
- Enabling end user productivity

# Value delivered in 12.6



More application  
access use cases



Lowering the TCO  
by simplifying the  
solution



Improving the  
Security

## Business Problems Addressed

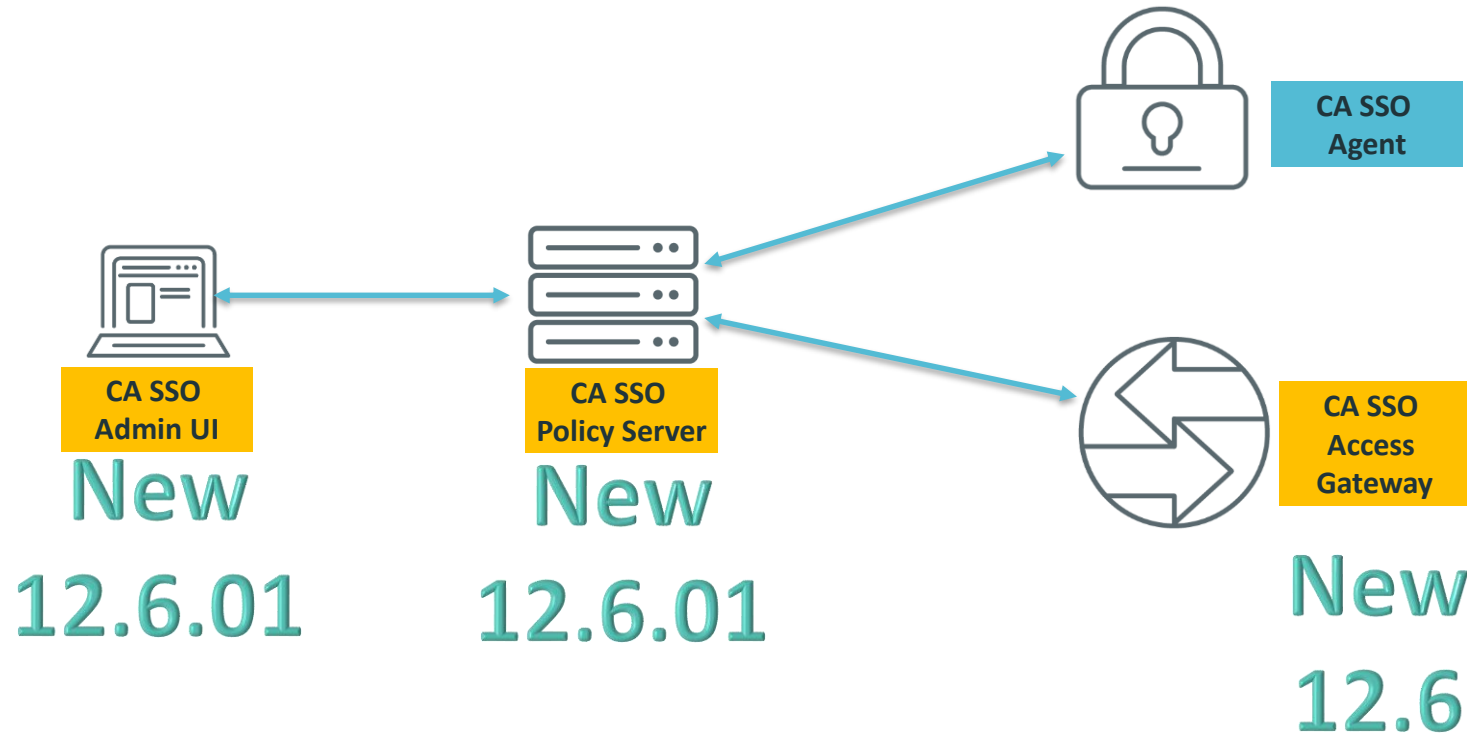
- Controlling access to information resources
- Reducing cost of managing access
- Enabling end user productivity



# Components in this Release

2

COMPONENTS IN THE RELEASE



# Federation Enhancements – Simpler Certificate Mgmt

## Feature

- Certificate expiration details
- Secondary validation certificates for partnerships
- Ability to update certificates without deactivation

## Value

- ✓ Improved manageability
- ✓ Reduce risk of application access outage
- ✓ Seamless application availability

Partnership 2 User Identification 3 SSO and SLO 4 Configure AuthnContext 5 Signature and Encryption 6 Application

Processing

**Signing:**

Signing Private Key Alias: defaultenterpriseprivatekey Expires on: Nov 20, 2025 04:46 AM EST

Signing Algorithm: RSAwithSHA1

☐ Sign Authentication Requests

☐ Sign ArtifactResolve

**Verification:**

Verification Certificate Alias: defaultenterpriseprivatekey Expires on: Nov 20, 2025 04:46 AM EST

Secondary Verification Certificate Alias: dsig Expires on: Nov 17, 2025 07:48 AM EST

☐ Require Signed ArtifactResponse

SLO SOAP Signature Options: Sign Neither

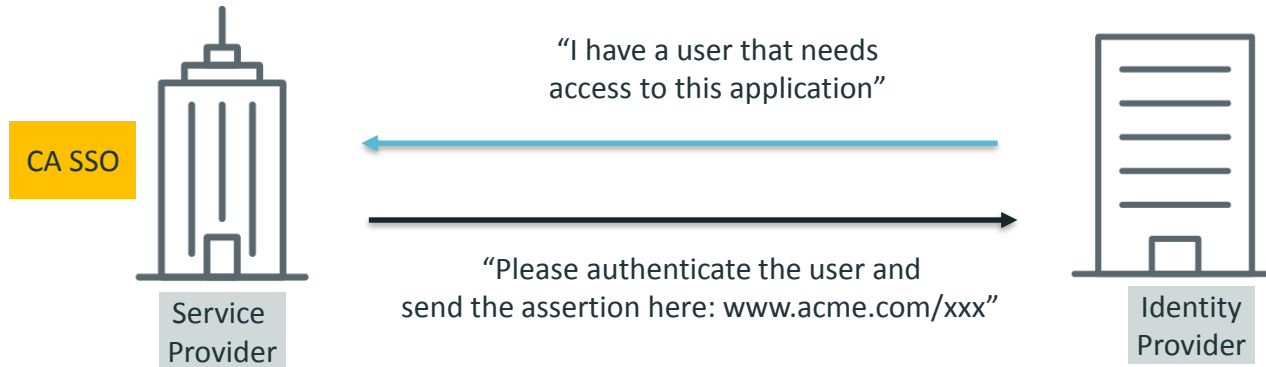
# Federation Enhancements – Simpler Configuration

## Feature

- Support Assertion Consumer Service (ACS) URL in the authentication request

## Value

- ✓ ACS URL is needed by the Identity Provider in a SAML partnership. Providing this URL in the authentication request simplifies the ability for CA SSO to act in a Service Provider role in a federated partnership



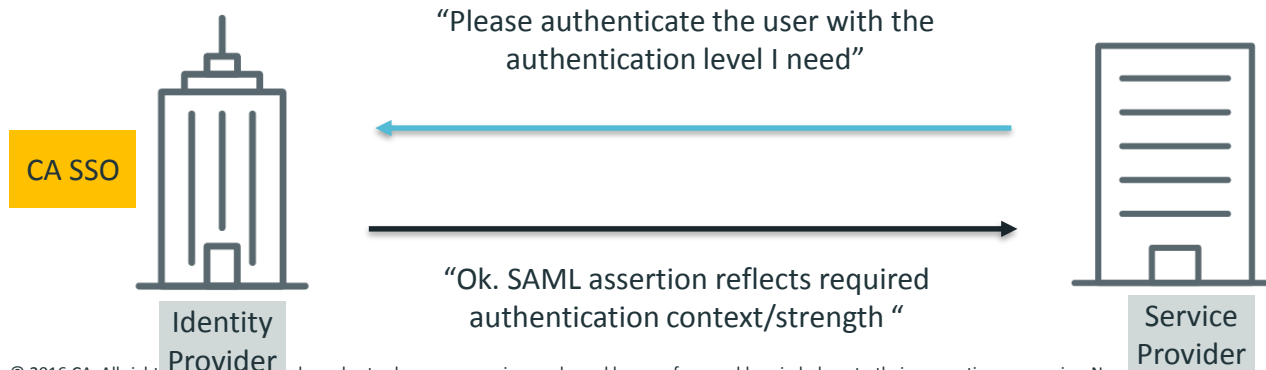
# Federation Enhancements – Simpler Configuration

## Feature

- Support for Dynamic Authentication

## Value

- ✓ A single configured federation partnership can support different authentications methods and strengths so there are fewer federation partnership configurations to manage.
- ✓ The Service Provider can achieve higher security posture



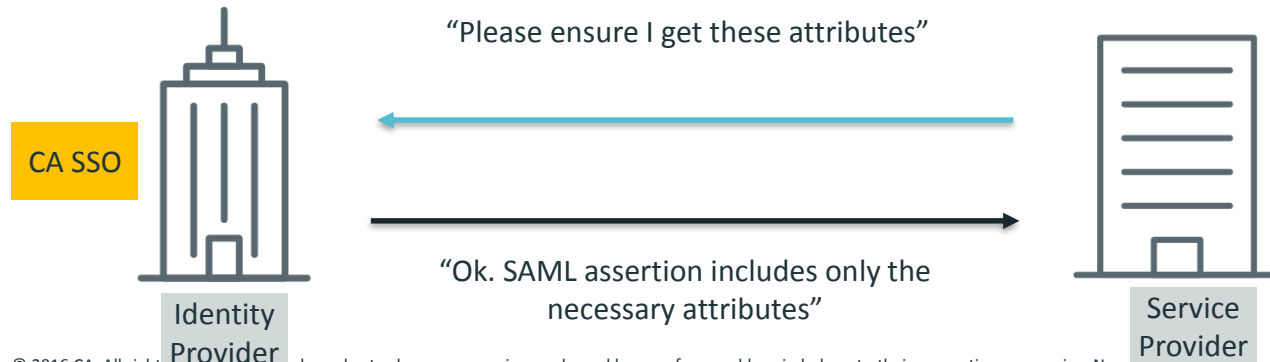
# Federation Enhancements – Improved Usability & Security

## Feature

- Attribute Consuming Service Index

## Value

- ✓ Specifies the index of an attribute group that the SP-side application requires from the Identity Provider. The SP-side application might need specific user attributes, for example, email and phone number. So the IDP provides just the necessary attributes



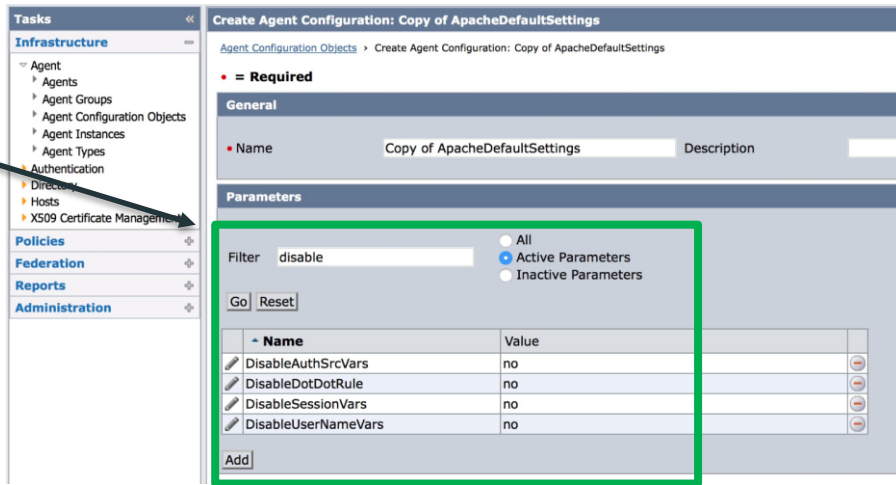
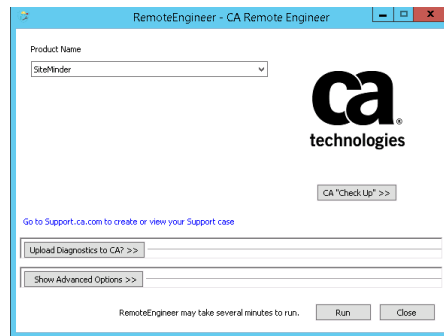
# Management Enhancements

## Feature

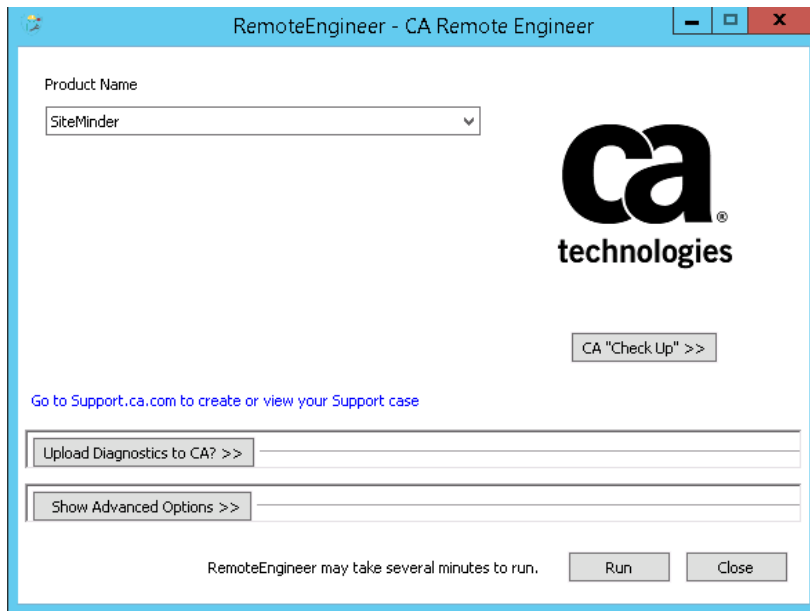
- CA Remote Engineer
- Improved tracing and log rotation
- ACO Search in the Admin UI

## Value

- ✓ Accelerated troubleshooting
- ✓ Improved ability to capture critical data for troubleshooting
- ✓ Reduces cost and simplifies management of CA SSO agent configuration



# CA Remote Engineer – Common Diagnostics



## CA Remote Engineer

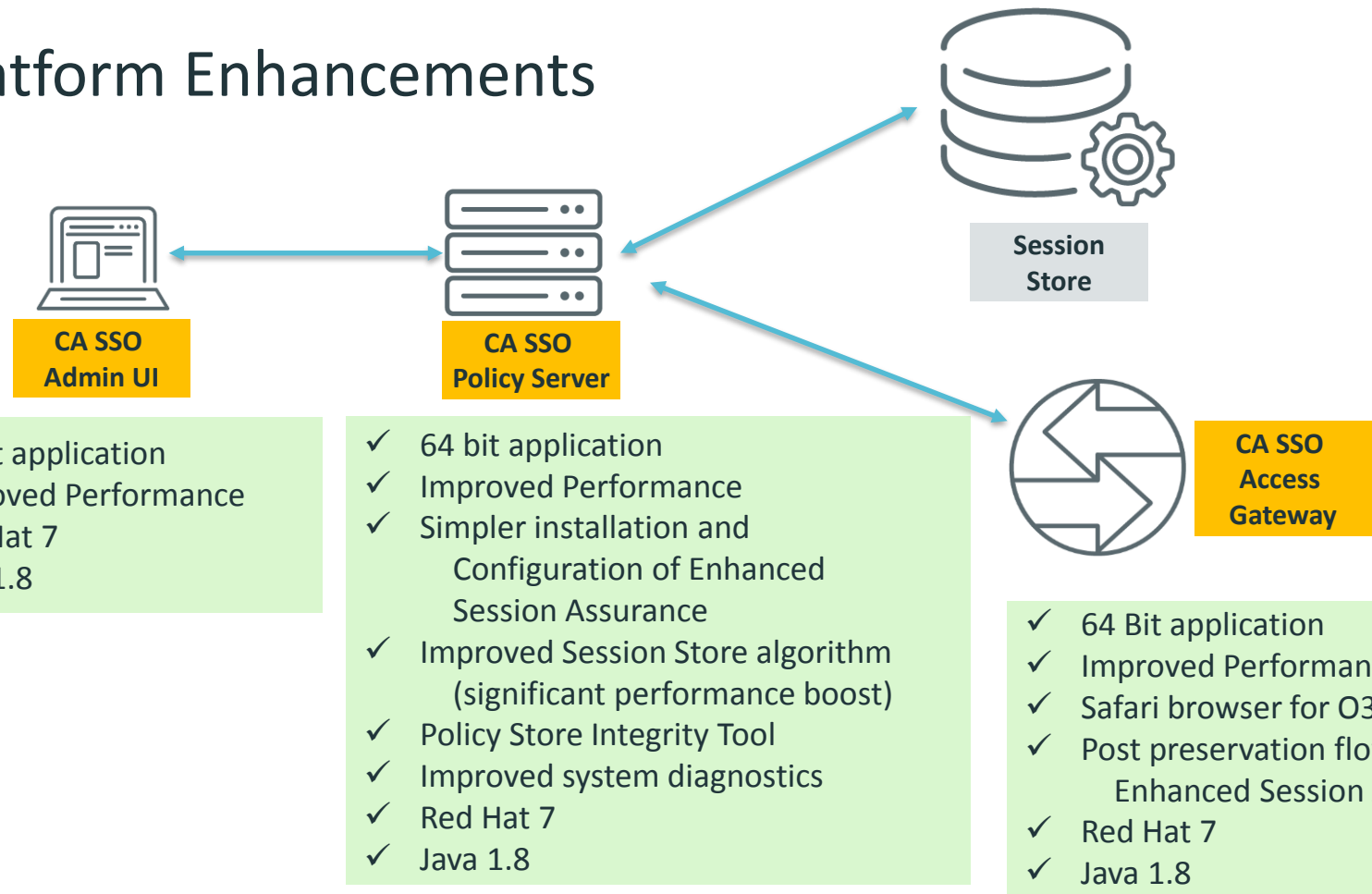
### Common Diagnostic Framework

- Runs up to 26 System/OS diagnostic commands
- Runs product diagnostics commands
- Gathers Diagnostic Data
- Link to CA Support Site to open issue
- Available for 56 CA Products
- Option to Send Diagnostics to CA

- Example Windows Diagnostic commands →

```
Preparing to execute diagnostic command: cscript scripts\caprodrig.vbs
Preparing to execute diagnostic command: ipconfig /all
Preparing to execute diagnostic command: netstat -a -o -n
Preparing to execute diagnostic command: net file
Preparing to execute diagnostic command: net share
Preparing to execute diagnostic command: cmd /c set
Preparing to execute diagnostic command: systeminfo
```

# Platform Enhancements





## 12.6 Performance Improvement

### Policy Server/SDK transactions throughput

- based on a mix of authentication, validation, authorization transactions in ratio 1:3:20

	Windows	RHEL6	RHEL7
FIPS - Compatible	22%	139%	86%
FIPS - Only	9%	115%	65%

### Federation transactions throughput across multiple IDP and SP profiles

	Windows	RHEL6	RHEL7
Federation	14%	26%	26%

Windows platform comparison – SSO 12.6 vs SSO 12.52SP2 on Windows 2012R2

Linux RHEL6 platform comparison – SSO 12.6 vs SSO 12.52SP1 on RHEL 6

Linux RHEL7 platform comparison – SSO 12.6 on RHEL7 vs SSO 12.51SP1 on RHEL6

# Important Considerations

- Any custom code must be complied for 64 bit environment
- Features not yet available
  - RSA SecurID auth with Red Hat 7 Policy Server – RSA did not support RH7
    - Radius can be used & we will add support for SecurID at earliest point possible
  - CA APM - test planned for CA SSO 12.6 with *CA APM for CA SSO* r13.0
- Global Delivery Packaged Work Product Roadmap
  - [https://support.ca.com/phpdocs/7/5262/5262\\_pkgd\\_work\\_product\\_platform\\_roadmap.pdf](https://support.ca.com/phpdocs/7/5262/5262_pkgd_work_product_platform_roadmap.pdf)

## Roadmap

Certification of ...	on Platform ...	with Single Sign-On	Roadmap Date
Advanced Certificate Authentication for CA Single Sign-On	Windows 2012 R2	R12.6	30-Nov-2016 Delivered on 30-Nov-2016
Advanced Certificate Authentication for CA Single Sign-On	Red Hat Enterprise Linux 6	R12.6	23-Dec-2016

*Other important  
information  
in the release  
notes*

## UPGRADE SUPPORT

- Upgrade Strategy Assessment Service
- CA Architect- Trusted Advisor
- CA Staff Augmentation

## MANAGED PROJECT

- Design and Initial Environment
- Turnkey Upgrade



**Lowers the risk  
of project failure**

# *\*New\** Advanced Core Administration 300 Course



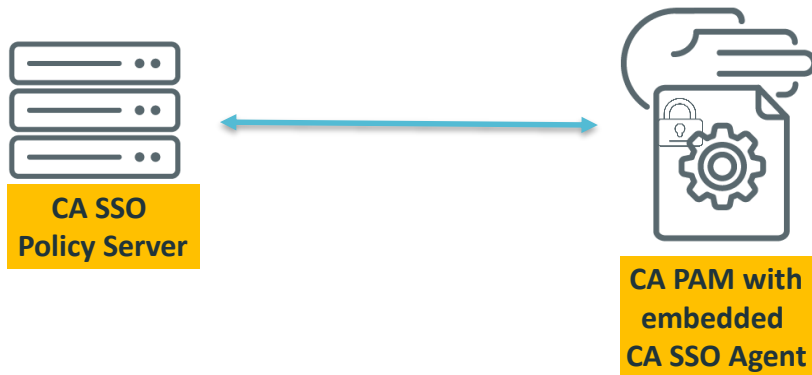
- 2 Day Instructor Led Training – on site
- Technical configurations, advanced use cases and best practices
  - Policy Server internals
  - Sizing and tuning
  - Monitoring
  - Policy design
  - Advanced SAML
  - Securing sessions
- For Security Application Administrators, System Administrators, Application Administrators



<http://marketplace.ca.com/education/04img30041.html>

# CA SSO Integrated with CA PAM

- Introduced with CA PAM 2.7.1



**CA Single Sign-On Configuration**

Policy Servers (format: IPv4\_address or IPv4\_address:port or IPv6\_address or [IPv6\_address]:port)

Policy Server User Name

Policy Server Password

Host Configuration Object

Agent Configuration Object

Trusted Host Name

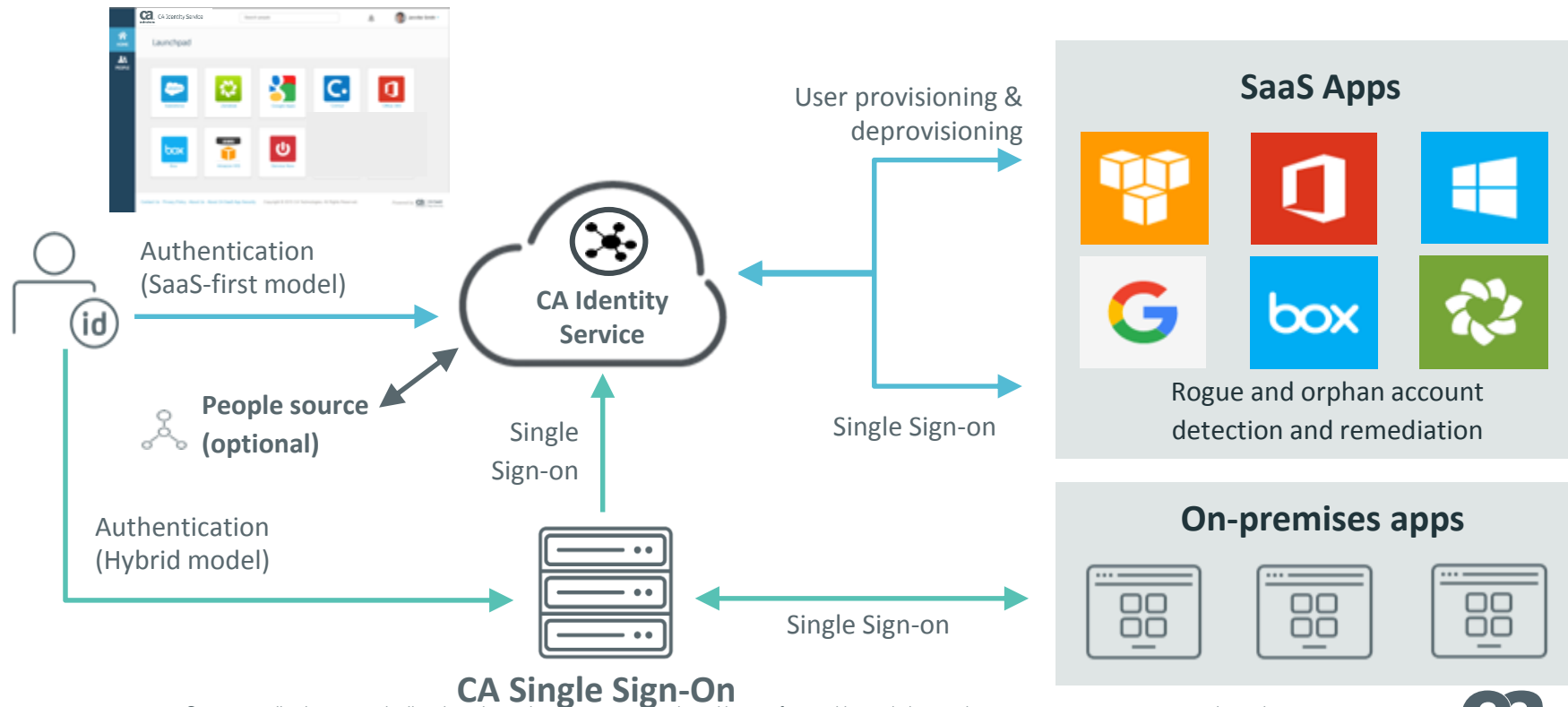
FIPS ☒ COMPAT ☐ MIGRATE ☐ ONLY

Currently enabled

Some operations can be time consuming. Please wait until the process completes.

# A New Optional Hybrid Model

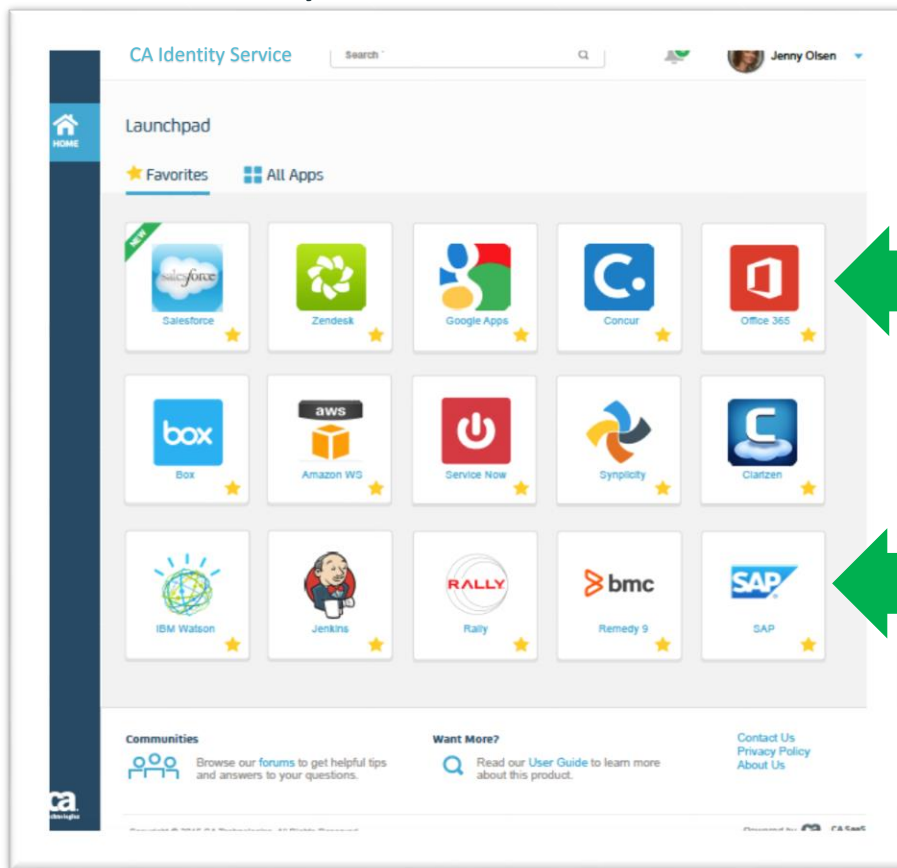
## CA SSO and CA Identity Service



© 2016 CA. All rights reserved. All trademarks, trade names, service marks and logos referenced herein belong to their respective companies. No unauthorized use, copying or distribution permitted. Please note that this presentation is for your informational purposes only does not serve as any technical user guides or documentation. There is no direct or indirect warranty provided pertaining the products and actual use may vary from the illustrations provided.

# A New Optional Hybrid Model

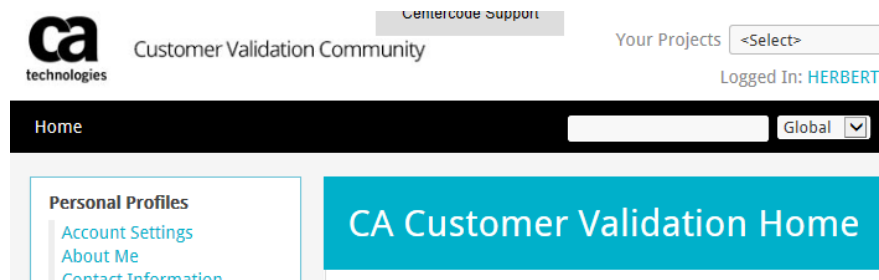
## CA SSO and CA Identity Service



The Launchpad is dynamically populated at time of login based upon what the end user has access to

Access to on-premise CA SSO protected applications is available - true hybrid support

- REST interface
- OpenID.Connect
- Enhanced support for Ajax-based Web application clients
- Authentication chaining for IWA fall back to forms authentication





# Market Validation: KuppingCole



Overall Leader  
**Access Management and  
Federation**

March 2016



Product Leader  
**Access Management and  
Federation**

March 2016



Innovation Leader  
**Access Management and  
Federation**

March 2016



Market Leader  
**Access Management and  
Federation**

March 2016

[CA.com link to March 2016 Kupping Cole Access Management & Federation Compass Report](#)

# Q&A



## **Herb Mehlhorn**

Advisor, Product Management

