

CA Endevor® Software Change Manager Status and Plans

October 2012



CA Endevor® Software Change Manager Status and Plans

agenda

- Next Generation Mainframe Management
- Release Status
- Version 15.0
- Release 15.1
- Futures

2

Copyright © 2012 CA. All rights reserved. All trademarks, trade names, service marks and logos referenced herein belong to their respective companies. CA confidential and proprietary. No unauthorized use, copying or distribution permitted.



agenda

an overview of CA Technologies

**CA Technologies
is an IT
management
software
and solutions
company**

CA Technologies
is executing a
bold vision for
the future, where
IT resources are
delivered with
unprecedented
levels of flexibility

We stand apart from our competitors by solving the toughest IT management challenges through:

- Deep expertise in diverse and complex environments
- Highly reliable and scalable products that are easy to use
- A practical approach to innovation

Our products enable customers to **manage** and **secure** IT environments and **deliver more flexible IT services**

With CA Technologies, **IT powers business agility**

3

Copyright © 2012 CA. All rights reserved. All trademarks, trade names, service marks and logos referenced herein belong to their respective companies. CA confidential and proprietary. No unauthorized use, copying or distribution permitted.



an overview of CA Technologies



Next Generation Mainframe Management

CA Endeavor SCM and CA Mainframe Software Manager™

Product	New ESD	Standard SMP/E	Product Acquisition Service & Software Installation Service	Best Practice Guides	Software Deployment Service	Software Configuration Service
CA Endeavor SCM	Yes	Yes	Yes	Yes	Yes	Yes

- IVPs, EVPs, BEaST and IST
- CA RS (Recommended Service)
 - Elimination of service packs changes the mindset of “waiting for service pack”
 - Follows IBM RSU (recommended Service Unit)
 - Delivered quarterly (Oct, Jan, Apr, Jul) beginning October 2010

Our customers have indicated CA MSM was a huge aid to the implementation of CA Endeavor SCM and the application of CA Endeavor SCM product maintenance

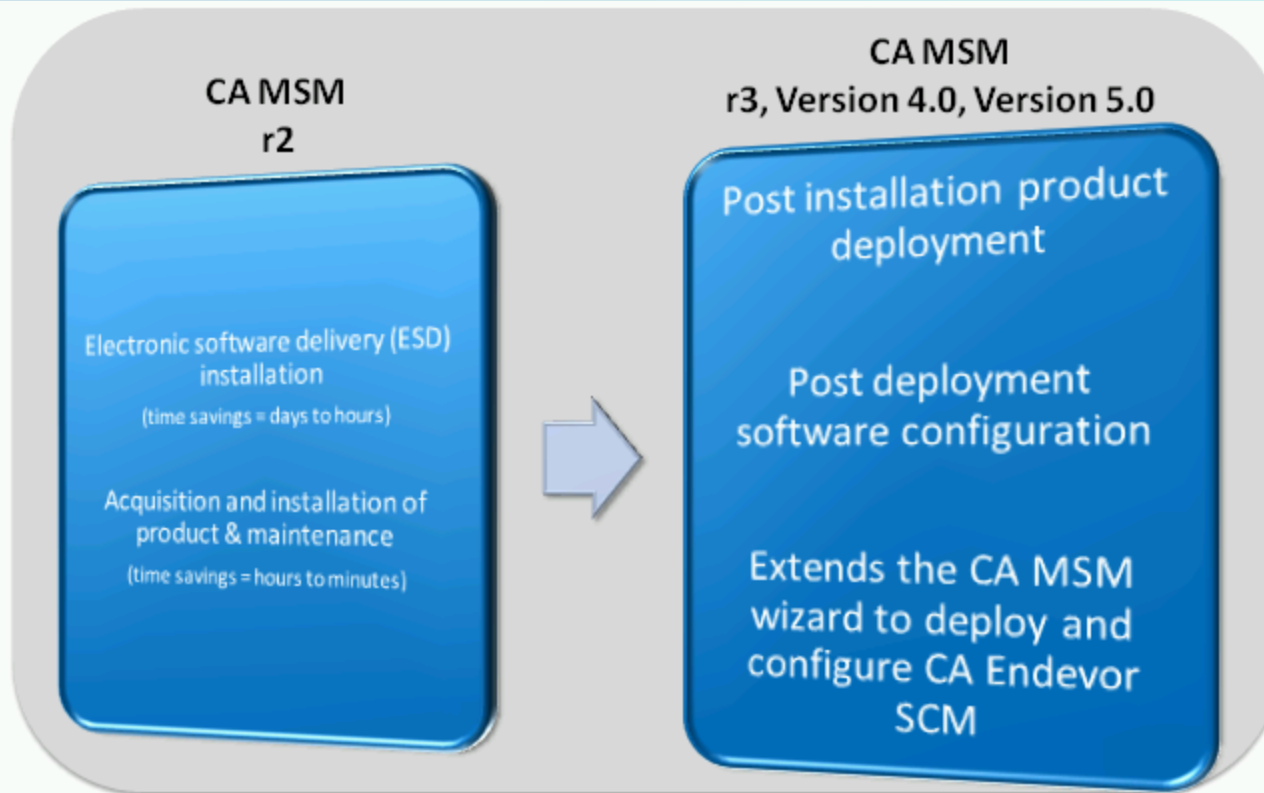
5

Copyright © 2012 CA. All rights reserved. All trademarks, trade names, service marks and logos referenced herein belong to their respective companies. CA confidential and proprietary. No unauthorized use, copying or distribution permitted.



CA Endeavor SCM and CA Mainframe Software Manager™

CA Endeavor SCM CA MSM value and new capabilities

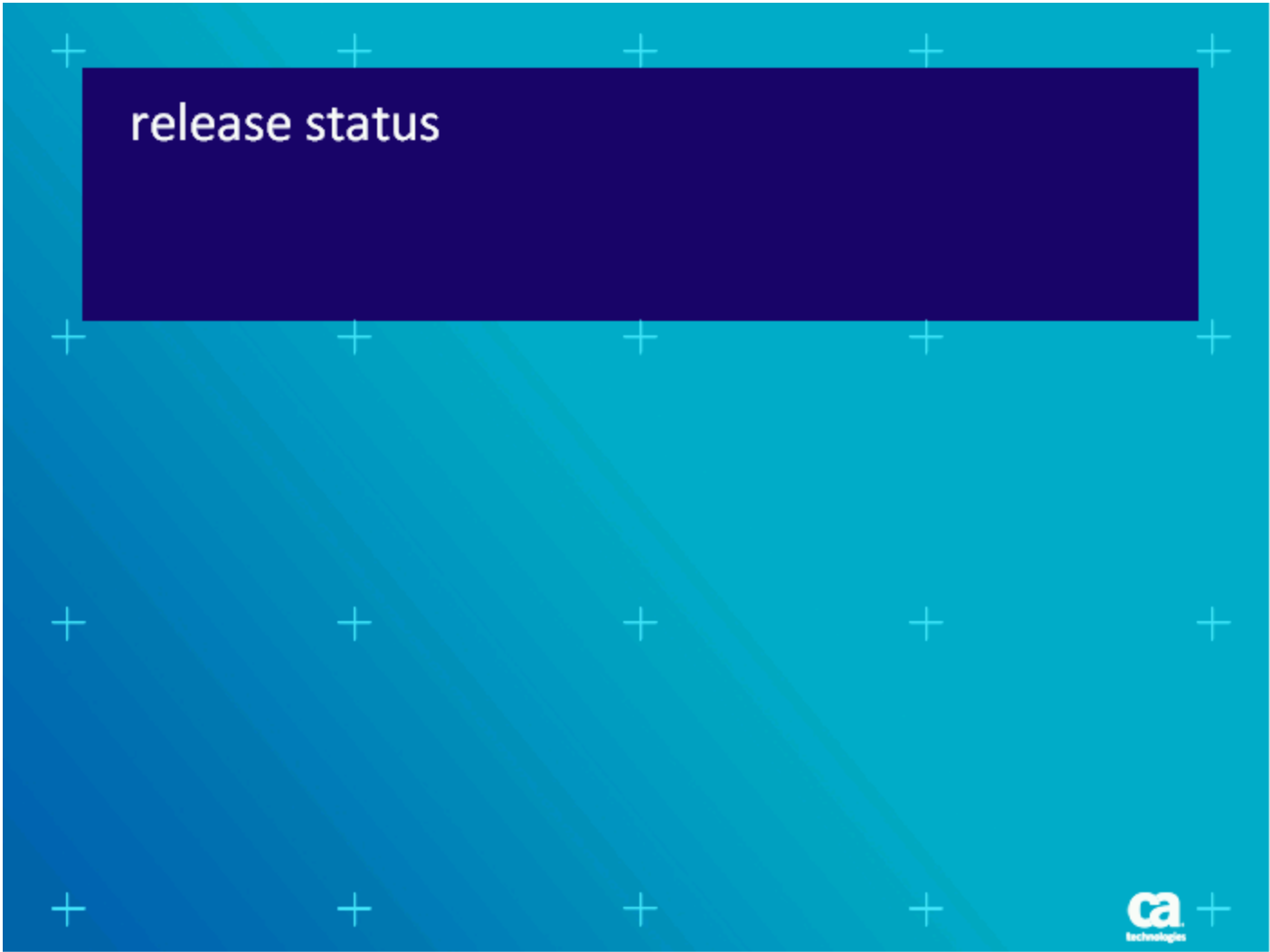


6

Copyright © 2012 CA. All rights reserved. All trademarks, trade names, service marks and logos referenced herein belong to their respective companies. CA confidential and proprietary. No unauthorized use, copying or distribution permitted.

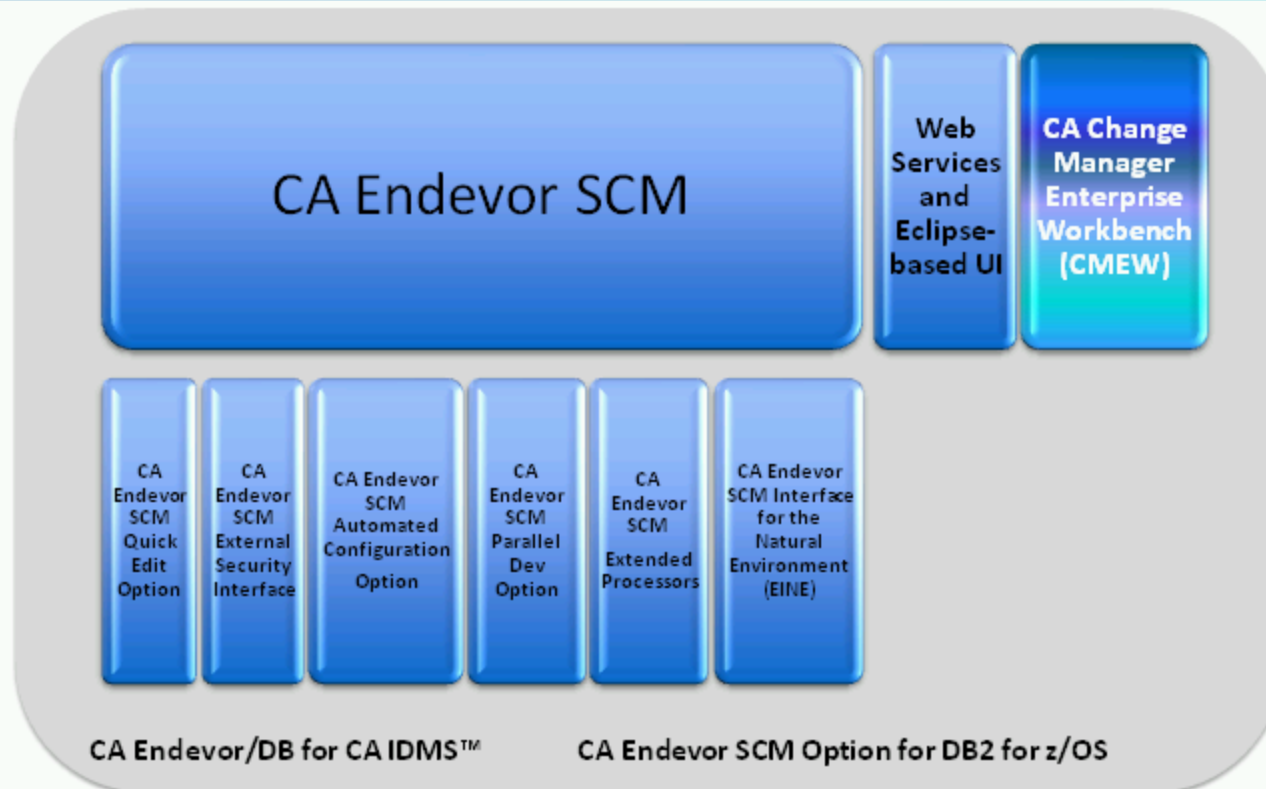


CA Endeavor SCM CA MSM value and new capabilities



release status

CA Mainframe Software Change Management



8

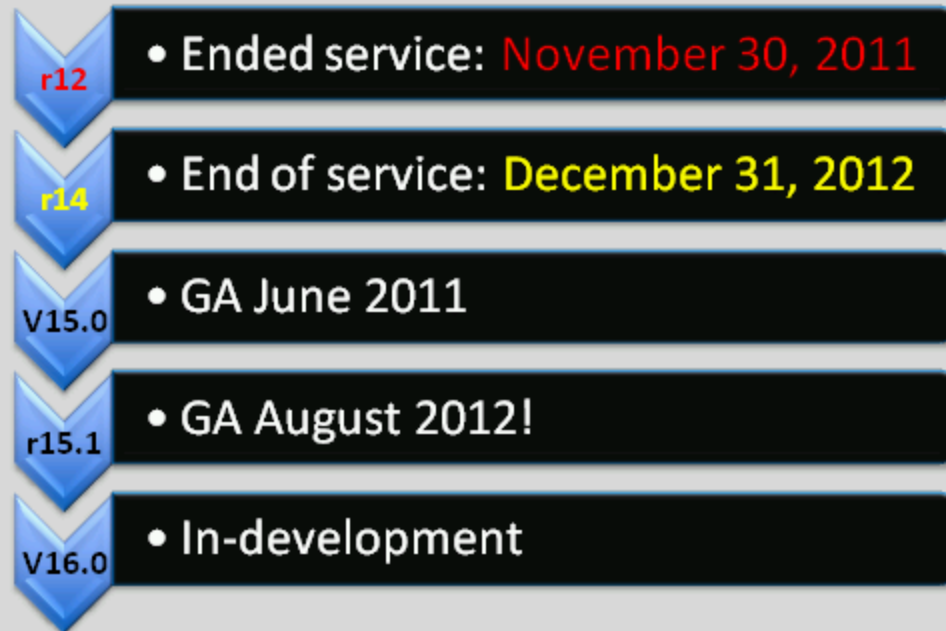
Copyright © 2012 CA. All rights reserved. All trademarks, trade names, service marks and logos referenced herein belong to their respective companies. CA confidential and proprietary. No unauthorized use, copying or distribution permitted.



CA Mainframe Software Change Management

release status

CA Endeavor SCM



9

Copyright © 2012 CA. All rights reserved. All trademarks, trade names, service marks and logos referenced herein belong to their respective companies. CA confidential and proprietary. No unauthorized use, copying or distribution permitted.



release status

release status

CA Change Manager Enterprise Workbench



- Ended service: August 31, 2010



- GA August 2009



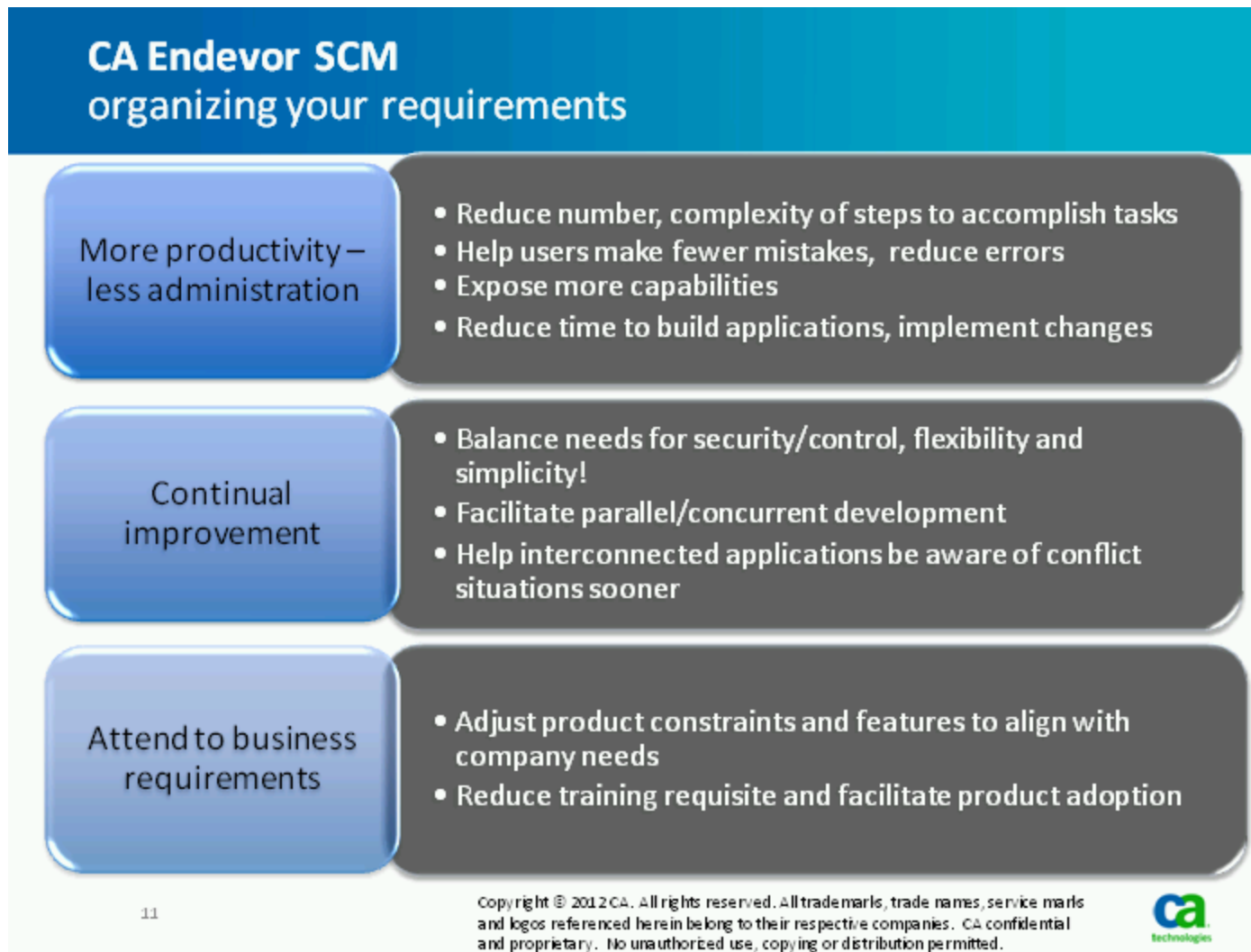
- Formal Planning Pending

10

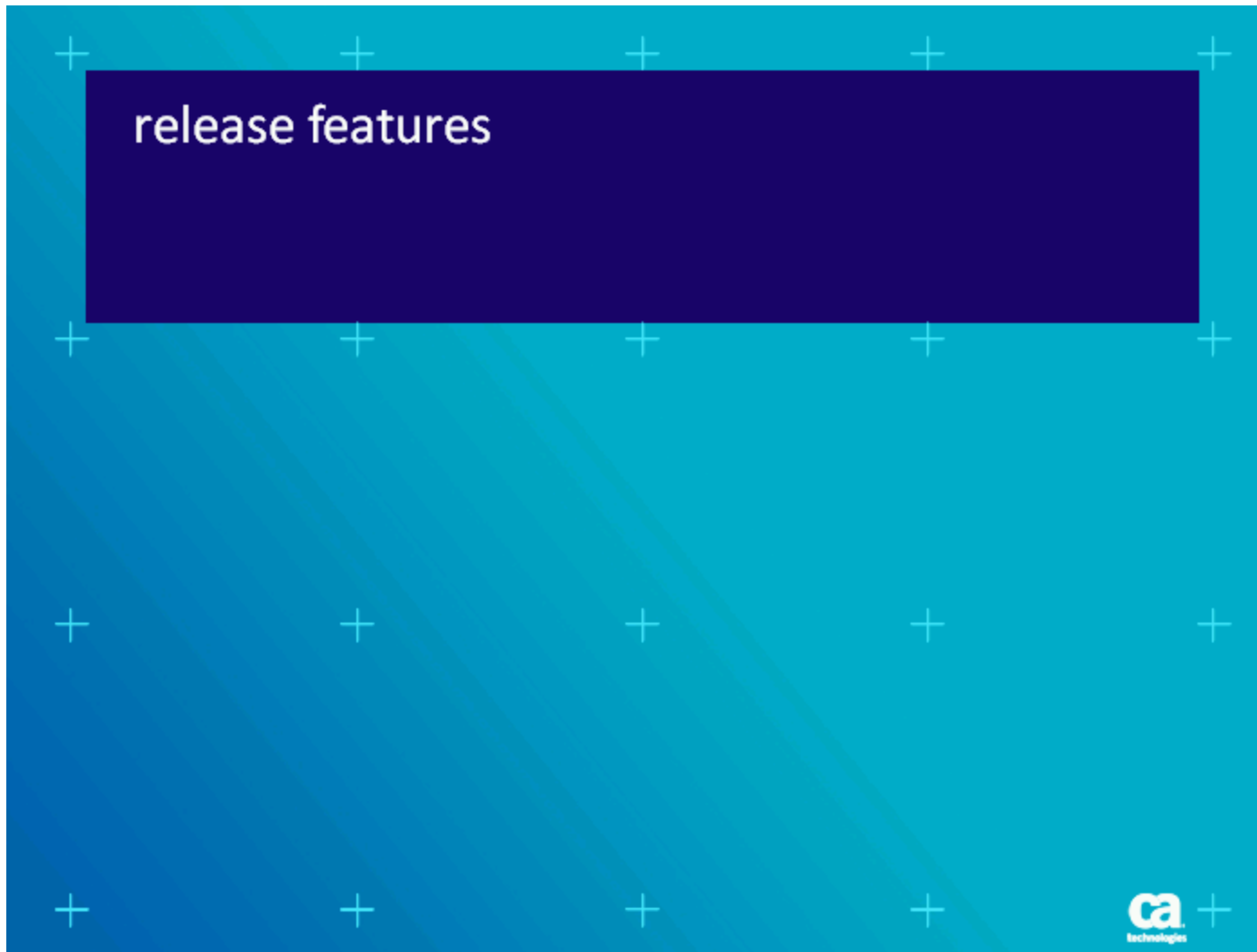
Copyright © 2012 CA. All rights reserved. All trademarks, trade names, service marks and logos referenced herein belong to their respective companies. CA confidential and proprietary. No unauthorized use, copying or distribution permitted.



release status



CA Endeavor SCM organizing your requirements



release features

CA Endeavor SCM Version 15.0 feature set



13

Copyright © 2012 CA. All rights reserved. All trademarks, trade names, service marks and logos referenced herein belong to their respective companies. CA confidential and proprietary. No unauthorized use, copying or distribution permitted.



CA Endeavor SCM Version 15.0 feature set

CA Endeavor SCM

Version 15.0 CA MSM Software Configuration Service

- CA MSM Version 4.0 Software Configuration Service
 - Ability to create and maintain CA Endeavor SCM configuration settings using the CA MSM graphical user interface
 - Replaces the “ISPF-editing” task with wizard technology
 - Initially operational narratives



*Click your way through
configuration steps!*

14

Copyright © 2012 CA. All rights reserved. All trademarks, trade names, service marks and logos referenced herein belong to their respective companies. CA confidential and proprietary. No unauthorized use, copying or distribution permitted.



CA Endeavor SCM Version 15.0 CA MSM Software Configuration Service

CA Endeavor SCM Version 15.0 Web Services

- Mainframe-based (USS) facility that enables clients from any platform to communicate with CA Endeavor SCM via HTTPS
 - Middleware for new CA Endeavor SCM Eclipse-based UI
 - Foundation for the integration of distributed products with CA Endeavor SCM
 - Opens the door for delivery of cross-platform integrations!



Web Services allow for integration between CA Endeavor SCM with distributed applications such as problem tracking - at no additional cost!

15

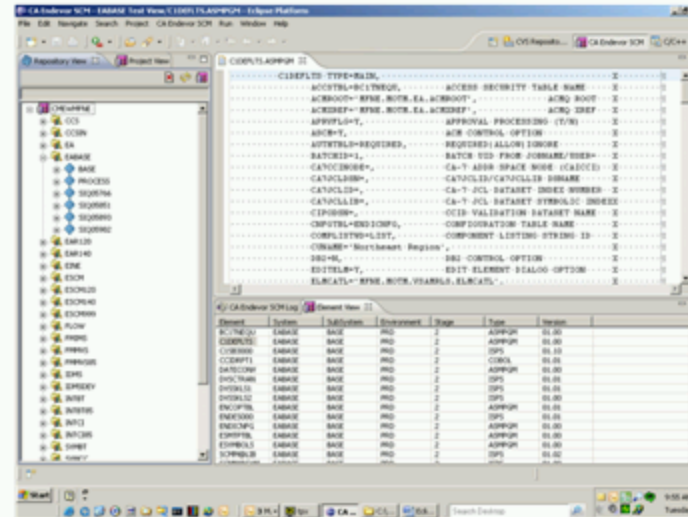
Copyright © 2012 CA. All rights reserved. All trademarks, trade names, service marks and logos referenced herein belong to their respective companies. CA confidential and proprietary. No unauthorized use, copying or distribution permitted.



CA Endeavor SCM Version 15.0 Web Services

CA Endeavor SCM Version 15.0 Enhanced Eclipse-based UI

- The CA Endeavor SCM Eclipse-based UI has been modified to utilize web services
 - Eliminates CA CMEW Windows requirement
 - Will contain Web Services feature
 - Sets the stage to co-locate CA Testing Tools UI along side CA Endeavor SCM UI in a workbench-like fashion
 - Does not replace CA CMEW functionality



16

Copyright © 2012 CA. All rights reserved. All trademarks, trade names, service marks and logos referenced herein belong to their respective companies. CA confidential and proprietary. No unauthorized use, copying or distribution permitted.



CA Endeavor SCM Version 15.0 Enhanced Eclipse-based UI

CA Endevor SCM Version 15.0 additional Quick Edit options

- Option “U” is now available from the Quick Edit panel
 - Supports user-defined functions



Less significant changes can sometimes make the most significant impact!

17

Copyright © 2012 CA. All rights reserved. All trademarks, trade names, service marks and logos referenced herein belong to their respective companies. CA confidential and proprietary. No unauthorized use, copying or distribution permitted.



CA Endevor SCM Version 15.0 additional Quick Edit options

CA Endeavor SCM

Version 15.0 Element-Action Backout capability

- Element-Action Backout extends CA Endeavor SCM's recovery capability by enabling the back-out of individual element actions within an executed Package
- When authorized, it provides the ability to restore the outputs (executables, object modules, data base request modules etc.) associated with the selected Package element actions, back to their prior state



**Reduce Production
Downtime!**

Faster Recovery!

18

Copyright © 2012 CA. All rights reserved. All trademarks, trade names, service marks and logos referenced herein belong to their respective companies. CA confidential and proprietary. No unauthorized use, copying or distribution permitted.



CA Endeavor SCM Version 15.0 Element-Action Backout capability

CA Endeavor SCM Version 15.0 LOG delta format

- CA Endeavor SCM Version 15.0 introduces a source code delta format called LOG which will retain only the most current version of the source and no source history
 - Specified in the delta format field in the TYPE definition
 - Retains all change history audit information associated with each prior version of the source

The LOG delta is a solution for large, pre-processed binary (JAVA) elements – storing iterations of the prior source is a waste of space as it provides no value

CA Endevor SCM Version 15.0 additional package ship options

- Package SHIP contains a new option to specify IP name and PORT for the Package Ship destination
 - Supports CA XCOM™ Data Transport extended addresses



We heard you!
*Same feature, more
functionality!*

CA Endevor SCM Version 15.0 additional package ship options

CA Endeavor SCM Version 15.0 EINE enhancement

- CA Endeavor SCM Integration for the Natural Environment (EINE)
 - Natural-based UI for CA Endeavor SCM to manage Natural and Predict objects
 - Natural users perform Endeavor actions and create Endeavor Packages
 - CA developed and supported
 - CA MSM enabled
 - Includes CA Endeavor SCM Package functions
 - Compatible with all CA Endeavor SCM releases (r12 – Version 15.0)

Common processes working in tandem to expedite software delivery!

21

Copyright © 2012 CA. All rights reserved. All trademarks, trade names, service marks and logos referenced herein belong to their respective companies. CA confidential and proprietary. No unauthorized use, copying or distribution permitted.



CA Endeavor SCM Version 15.0 EINE enhancement

CA Endeavor SCM r15.1 feature set



22

Copyright © 2012 CA. All rights reserved. All trademarks, trade names, service marks and logos referenced herein belong to their respective companies. CA confidential and proprietary. No unauthorized use, copying or distribution permitted.



CA Endeavor SCM r15.1 feature set

CA Endeavor SCM

r15.1 HFS Package Ship / HFS Package Ship Backout

- Extends capability to deliver USS file structures typically associated with Java development across z/OS systems
 - Package Ship panel enhancements
 - USS utility program
 - Includes support for USS directory specification for host staging and target destinations
 - Sends both Packages and Package Backout files containing one or more USS output to predefined destinations



23

Copyright © 2012 CA. All rights reserved. All trademarks, trade names, service marks and logos referenced herein belong to their respective companies. CA confidential and proprietary. No unauthorized use, copying or distribution permitted.



CA Endeavor SCM r15.1 HFS Package Ship / HFS Package Ship Backout

CA Endevor SCM r15.1 Expanded Eclipse UI

- Additional CA Endevor SCM actions:
 - GENERATE
 - MOVE
- Provides usability improvements and baseline functionality for the application developer role



24

Copyright © 2012 CA. All rights reserved. All trademarks, trade names, service marks and logos referenced herein belong to their respective companies. CA confidential and proprietary. No unauthorized use, copying or distribution permitted.



CA Endevor SCM r15.1 Expanded Eclipse UI

CA Endeavor SCM r15.1 Support for VSAM Extended Addressability

- VSAM Extended Addressability can be utilized for the space-efficient, proprietary Endeavor Library (ELIB) format used to manage various CA Endeavor SCM inventories
 - Provides CA Endeavor SCM with the capability to exploit VSAM Extended Addressability to support ELIB data sets that require greater than 4GB of space
 - Reduces and may eliminate administrative tasks associated with file reallocations and data manipulation required when CA Endeavor SCM inventories managed with ELIB data formats grow larger than anticipated
 - Can be utilized with CA LServ
 - CA Common Services Version 14 (with CA LServ PTF R047492 applied) is the minimum version required for VSAMEA

25

Copyright © 2012 CA. All rights reserved. All trademarks, trade names, service marks and logos referenced herein belong to their respective companies. CA confidential and proprietary. No unauthorized use, copying or distribution permitted.



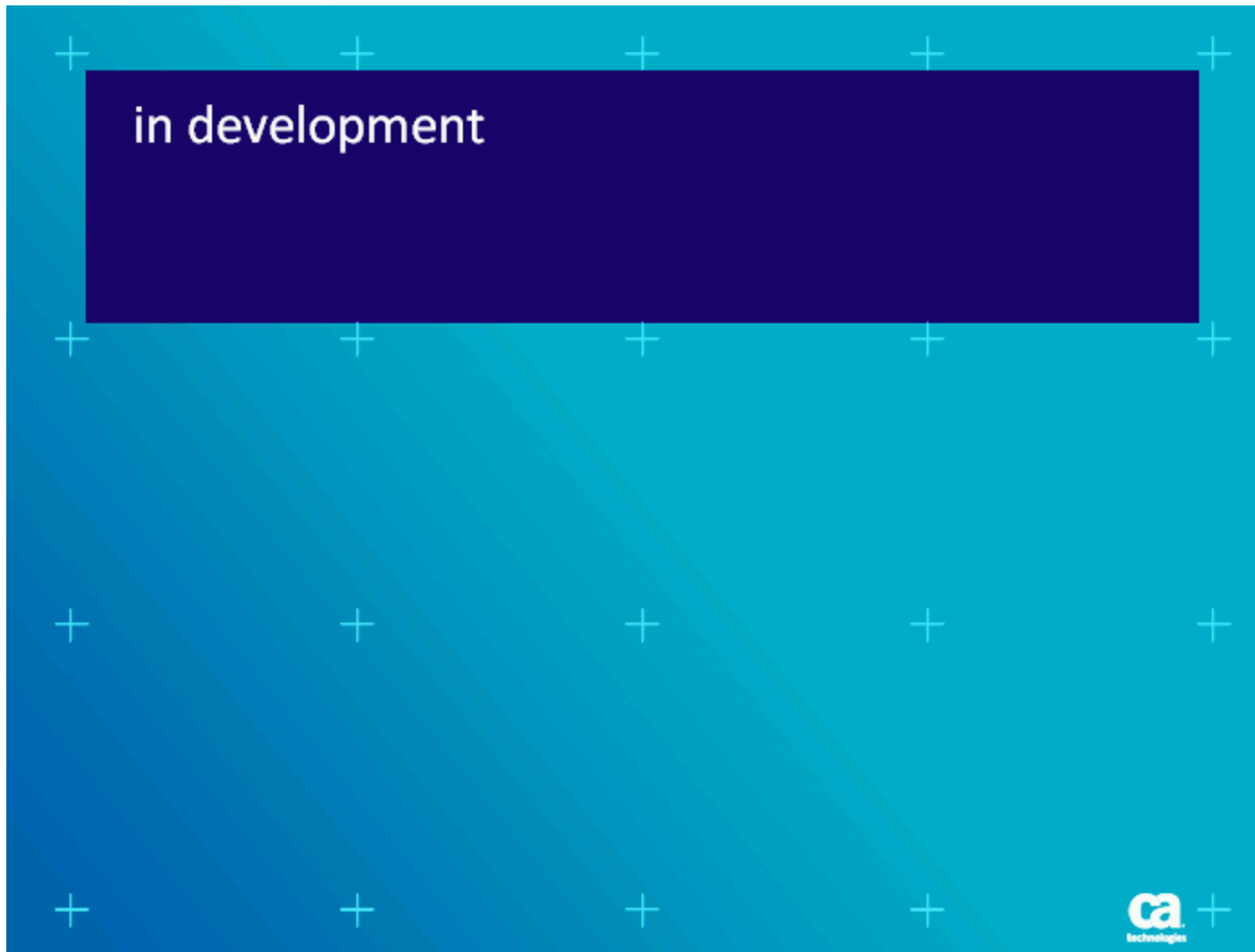
CA Endeavor SCM r15.1 Support for VSAM Extended Addressability

CA Endeavor SCM r15.1 Extended USS/HFS Alternate-Id support

- It was there all along!
- z/OS 1.12 and 1.13 APAR required: ***IBM APAR OA39558 addresses issues associated with the use of a CA Endeavor SCM alternate ID***
- See the CA Endeavor SCM Security Guide
 - Section 2: Implementing Data Set Security
 - Subsection: Alternate ID Support for UNIX Files
- See Knowledge Document ID: **TEC573303** @ WWW.CA.COM/MYCA
 - *Use of CA Endeavor SCM Alternate ID and USS*



CA Endeavor SCM r15.1 Extended USS/HFS Alternate-Id support



in development

CA Endeavor SCM Version 16.0 feature set




28

Copyright © 2012 CA. All rights reserved. All trademarks, trade names, service marks and logos referenced herein belong to their respective companies. CA confidential and proprietary. No unauthorized use, copying or distribution permitted.



CA Endeavor SCM Version 16.0 feature set

Expanding CA Next-Generation Mainframe *Eclipse Application Development Environment*



Software Change Management Testing Fault Analysis IBM Rational Developer for System z® Integrated Development

CA Endeavor® Software Change Manager CA InterTest™ CA SymDump® IBM RDz CA Endeavor SCM CA Testing Tools

More value from your Mainframe investment!

In Development! Eclipse Interfaces for: File and Data Management (CA FileMaster® Plus) and CA Mainframe Application Tuner

29

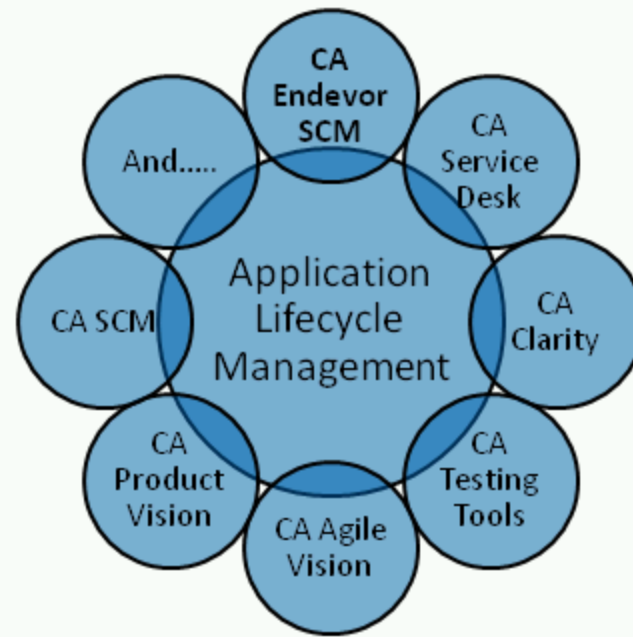
Copyright © 2012 CA. All rights reserved. All trademarks, trade names, service marks and logos referenced herein belong to their respective companies. CA confidential and proprietary. No unauthorized use, copying or distribution permitted.



Slide 29

CA Endeavor SCM becomes a “cog in the wheel”

- Ongoing plan for integration...
- Incident, requirements, project management drive software change management
- Every software change needs to be tested

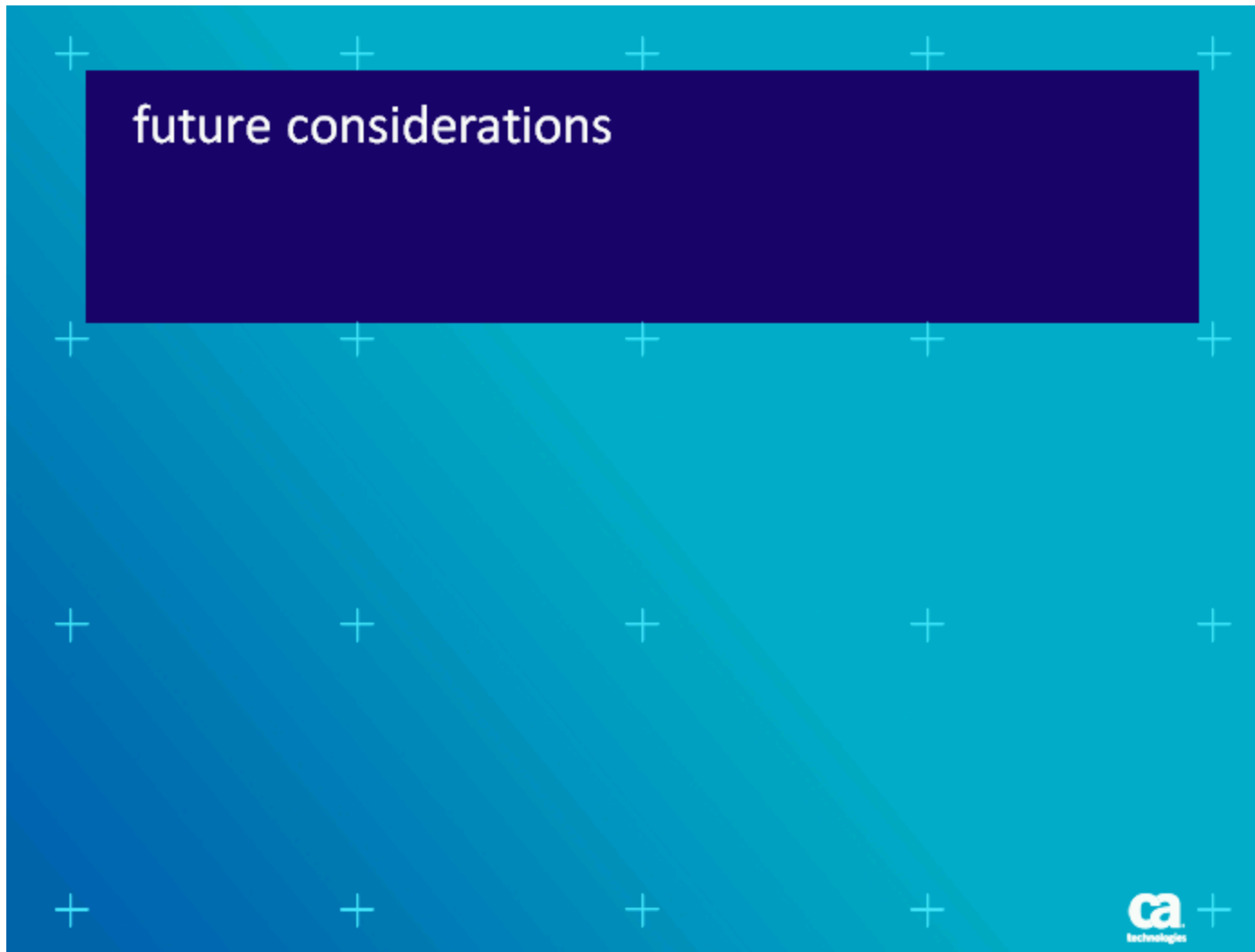


30

Copyright © 2012 CA. All rights reserved. All trademarks, trade names, service marks and logos referenced herein belong to their respective companies. CA confidential and proprietary. No unauthorized use, copying or distribution permitted.



CA Endeavor SCM becomes a “cog in the wheel”



future considerations

CA Endeavor SCM features under consideration

More productivity – less administration



- “ALTER” action/utility to simplify inventory re-alignments
- 24 X 7 availability – reduce downtime required for file maintenance
- Enhance package-relation capability (hierarchical approvers)
- Additional Eclipse UI roles

Continual improvement



- Track and send outputs to user-defined test locations associated with life-cycle stages
- Streamlined SYNCHRONIZATION (once you're synched, you're synched!)
- Enhance promotion packages to facilitate use by customers who change Package names
- More product symbolics for even more flexibility for build and deployment processing

Attend to business requirements



- Package Activity SMF Recording
- Integration with IBM® Rational Team Concert™ (RTC)
- Smart Phone Package Approval capability
- Integration with CA Service Desk Management, Clarity™, CA Agile Vision, CA Product Vision
- Out-of-box CA Easytrieve® report series

32

Copyright © 2012 CA. All rights reserved. All trademarks, trade names, service marks and logos referenced herein belong to their respective companies. CA confidential and proprietary. No unauthorized use, copying or distribution permitted.



CA Endeavor SCM features under consideration



development partnership

CA Endeavor SCM development partnership

- Agile Scrum development methodology
 - Live demonstrations / end-of-sprint reviews (4-week sprints)
- Selected sites will be solicited for:
 - Overall strategic direction of product
 - Participation during feature design, review and certification processes
 - Alpha testing
- Welcome Version 16.0 partners!
- Thank you Version 15.1 partners!

Interested?
Have a specific question?
Just curious?
Send us an Email!

Rose Sakach rose.sakach@ca.com

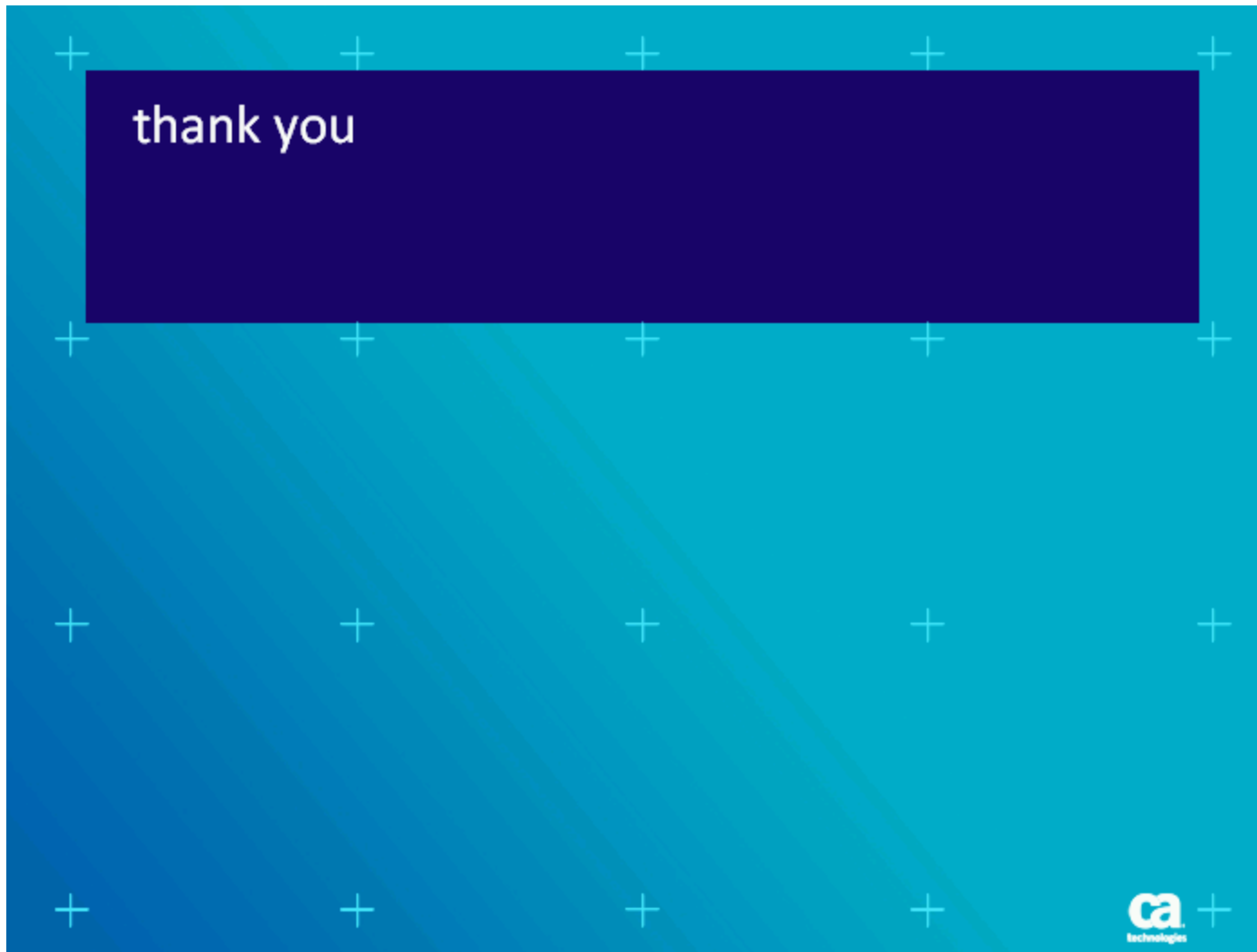
Peter McCullough peter.mccullough@ca.com

34

Copyright © 2012 CA. All rights reserved. All trademarks, trade names, service marks and logos referenced herein belong to their respective companies. CA confidential and proprietary. No unauthorized use, copying or distribution permitted.



CA Endeavor SCM development partnership



thank you

legal notice

Copyright © 2012 CA. All rights reserved. All trademarks, trade names, service marks and logos referenced herein belong to their respective companies. IBM® Rational Developer for System z® and IBM® Rational Team Concert™ are trademarks of International Business Machines Corporation in the United States, other countries, or both. CA confidential and proprietary. No unauthorized use, copying or distribution permitted.

THIS PRESENTATION IS FOR YOUR INFORMATIONAL PURPOSES ONLY. CA assumes no responsibility for the accuracy or completeness of the information. TO THE EXTENT PERMITTED BY APPLICABLE LAW, CA PROVIDES THIS DOCUMENT "AS IS" WITHOUT WARRANTY OF ANY KIND, INCLUDING, WITHOUT LIMITATION, ANY IMPLIED WARRANTIES OF MERCHANTABILITY, FITNESS FOR A PARTICULAR PURPOSE, OR NON-INFRINGEMENT. In no event will CA be liable for any loss or damage, direct or indirect, in connection with this presentation, including, without limitation, lost profits, lost investment, business interruption, goodwill, or lost data, even if CA is expressly advised of the possibility of such damages.

Certain information in this presentation may outline CA's general product direction. This presentation shall not serve to (i) affect the rights and/or obligations of CA or its licensees under any existing or future written license agreement or services agreement relating to any CA software product; or (ii) amend any product documentation or specifications for any CA software product. The development, release and timing of any features or functionality described in this presentation remain at CA's sole discretion.

Notwithstanding anything in this presentation to the contrary, upon the general availability of any future CA product release referenced in this presentation, CA may make such release available (i) for sale to new licensees of such product; and (ii) in the form of a regularly scheduled major product release. Such releases may be made available to current licensees of such product who are current subscribers to CA maintenance and support on a when and if-available basis.