

CD SWAT

CA DevTest
10.3



Upgrade DevTest from 9.5.1 to 10.3

Prepared by: Koustubh Warty,
Daniel Mazzei
Date: March 2018

Table of Contents

Chapter 1: Introduction	3
Purpose.....	3
Document Tracking.....	3
Reporting Issues	3
Chapter 2: Before You Begin	4
Review Documentation.....	4
Gather Materials.....	4
Backup Data	4
Download DevTest Installer	5
Chapter 3: Perform the Upgrade	7
Stop DevTest Services	7
Upgrade DevTest.....	7
Verify DevTest Installation.....	12
Chapter 4: Post-Upgrade Tasks	14
Licensing	14
Enterprise Dashboard.....	14
Registry	14
Portal.....	14
Properties Files	15
Custom Folders	16
Custom JAR Files.....	16
Memory Allocation Settings.....	16
Projects.....	16
Starting and Stopping DevTest.....	16
Access Control and LDAP Configuration	16

Chapter 1: Introduction

Purpose

This procedure assumes an *in-place upgrade* (i.e., installing to the *same* directory as the existing installation).

While the upgrade process itself is fairly straightforward and may only take a few hours, we recommend [consulting CA Technical Support](#) and allocating at least 2-3 days downtime for the upgrade itself and any configuration changes that need to be made or issues that may arise.

Document Tracking

Version	Date	Author	Version
9.1.0.399 GA	03.09.2016	Koustubh Warty	Version 2.0
10.1.0.283 GA	04.25.2017	Daniel Mazzei	Version 3.0
10.2.4.153 GA	12.04.2017	Daniel Mazzei	Version 4.0
10.3.0.297 GA	03.26.2018	Daniel Mazzei	Version 5.0

Reporting Issues

Please send your questions/comments/concerns on this document to Koustubh.Warty@ca.com and Daniel.Mazzei@ca.com

Chapter 2: Before You Begin

Review Documentation

There are many resources available to answer questions you may have about the upgrade process or specific configuration settings. We highly suggest you visit the [DevTest Upgrade Center](#) and review the information provided before performing the upgrade.

You can also find information about the upgrade process, including pre-requisites and post-installation checks, in the [Preparing Your DevTest Upgrade](#) section of the [DevTest 10.3 documentation](#). Be sure to [verify all system requirements](#) (including operating system and database versions supported) to make sure you have the recommended memory and storage capacity. It's also important to note that you will need administrative access to your databases.

A list of the New Features and Enhancements, Resolved Issues, Known Issues, End of Service and End of Life announcements, and much other information, can be found in the [DevTest 10.3 Release Notes](#).

The [currently supported versions](#) of DevTest are 9.5.1 and above. If you are running a version of DevTest older than 9.5.1 you must contact your CA account representative prior to upgrading.

Gather Materials

Gather all the required license keys, installation files, and environment information prior to beginning the upgrade, including:

- **Installation files:** [Follow the instructions in the documentation](#) to download the installation files for a supported operating system.
- **Environment information:** A list of hostnames, IP addresses, usernames, passwords, databases, etc. must be accessible during the upgrade. Be sure to collect database login information, LDAP configuration settings, SSL certificates, etc. as well or have someone who can provide this information on standby before starting the upgrade.
- **License keys:** Make sure you have a valid license key file. The file-based license is valid for one year from the date of issue and will be renewed automatically if your support contract is up-to-date. The license file is sent to an email address associated with the license for your company. If you are not sure who is getting it, [contact CA Technical Support](#) to request a new license key. For more information about licensing, see [Licensing](#).

Backup Data

This is a mandatory step that needs to be done prior to proceeding with the upgrade. We will be doing an in-place upgrade which necessitates to back up the following to a remote location -

- The entire existing DevTest 9.5.1 folder

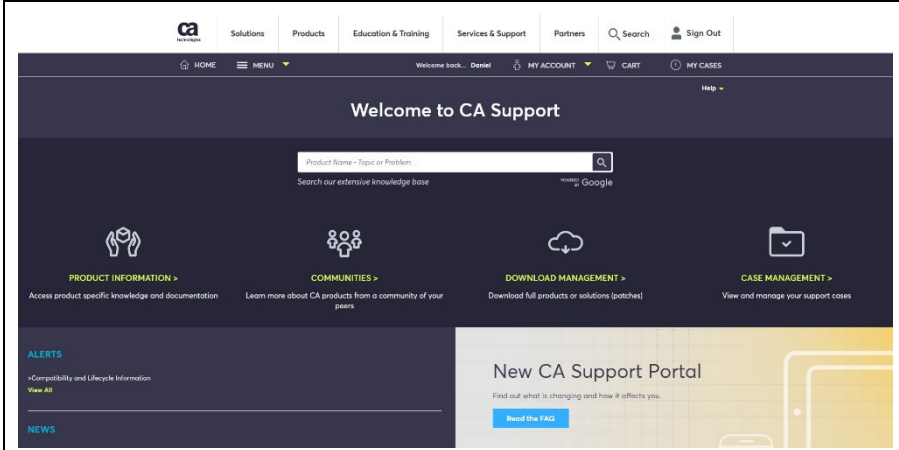
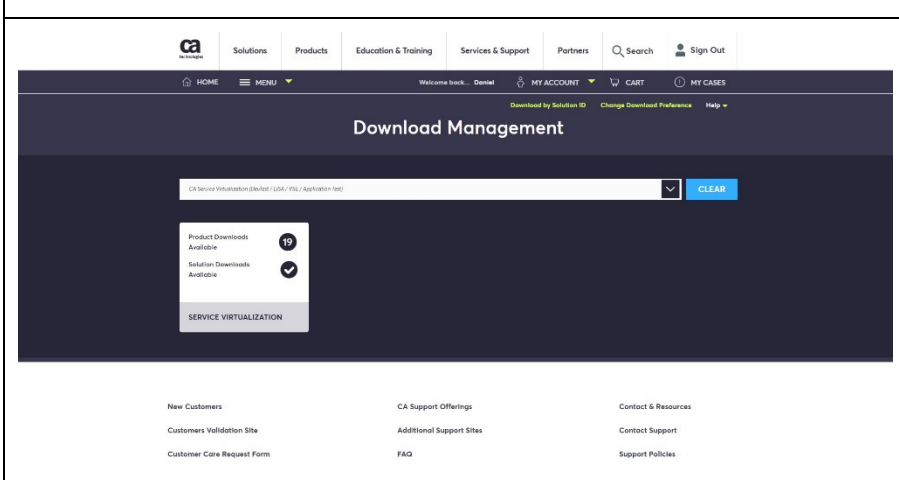
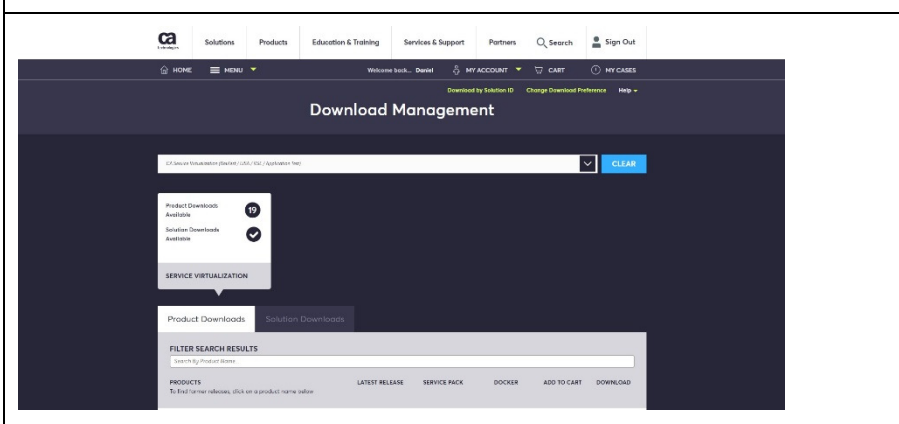
This would take care of the following which are important files in your installation

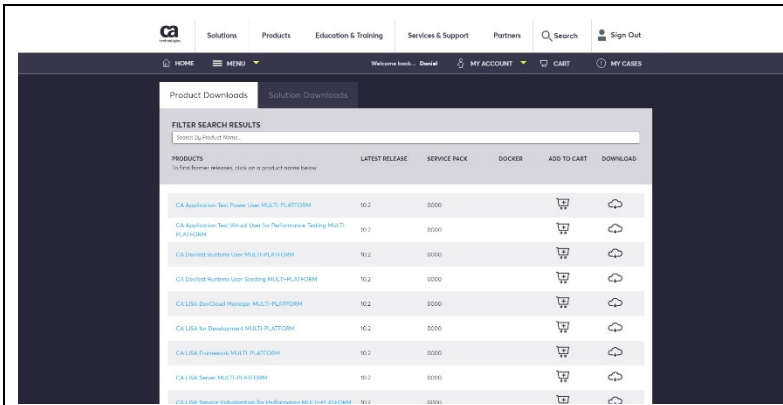
- Properties files (local, site, and lisa)
- Virtual Services (if stored locally)
- Application Test tests (if stored locally)
- HotDeploy folder
- vseDeploy folder
- lib
- any custom folders

If you have stored your existing Tests and Virtual Services in a Source Control Repository, then the recommendation is to make a copy of those assets. Once that copy is created, you can use the new copy with DevTest 10.3. In this case, if there are any issues, then you would have a backup to fall back on if required.

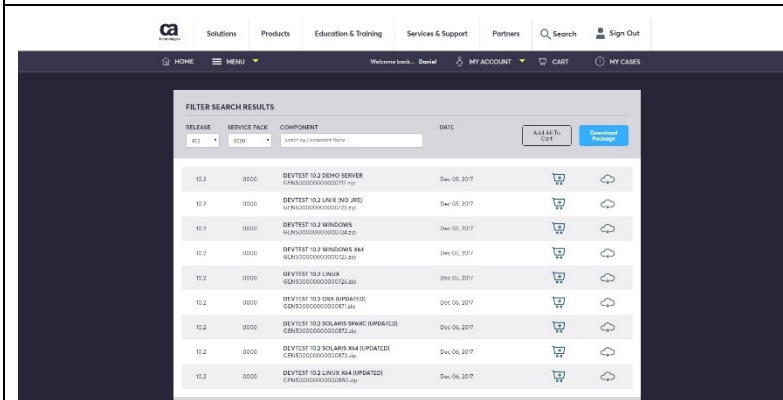
NOTE: All the above files and folders are preserved during the upgrade from the previous release. The backup is precautionary if there was to be an unforeseen issue during the in-place upgrade. Always back up existing projects, properties files, etc. even if you are using a versioning system.

Download DevTest Installer

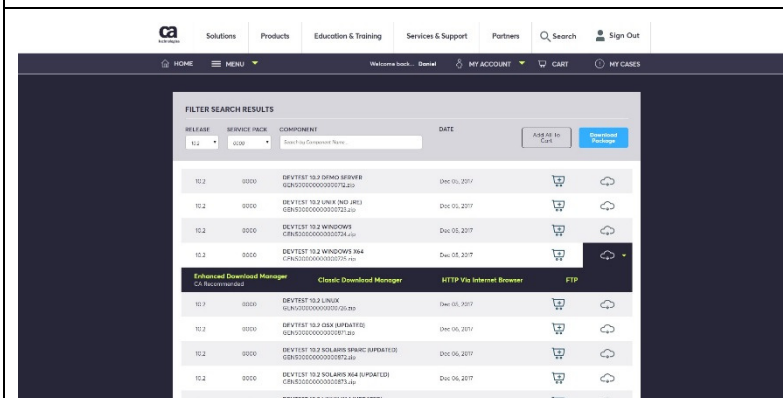
	<p>DevTest 10.3 can be downloaded from the CA Support site at http://support.ca.com.</p> <p>Log in or create an account if you do not have one already.</p>
	<p>Click Download Management.</p> <p>In the Search box type "CA Service V" and select the drop-down option for CA Service Virtualization (DevTest / LISA / VSE / Application Test).</p>
	<p>Click on the results box to expand the Product Downloads section and scroll down.</p> <p><i>Note: The Solutions Downloads tab is not enabled for DevTest.</i></p>



Click on **ANY** of the product names in blue. It does not matter which one you click on. They all being you to the same page in the next step.



The page will refresh. **Filter** the selection **by Release** and **Service Pack**.



Locate the appropriate packages for your OS and **click the cloud icon** to expand your download options. Select **HTTP Via Internet Browser** to start the download in your browser.

For example, to install DevTest server components and Workstation UI on Windows Server 64-bit, select the DEVTEST 10.3 WINDOWS X64, which contains both the server components and Workstation UI. To install DevTest server components on Linux and Workstation on Windows, you need both the DEVTEST 10.3 WINDOWS X64 and DEVTEST 10.3 LINUX X64.

Note: Be sure to disable pop-up blockers.

Chapter 3: Perform the Upgrade

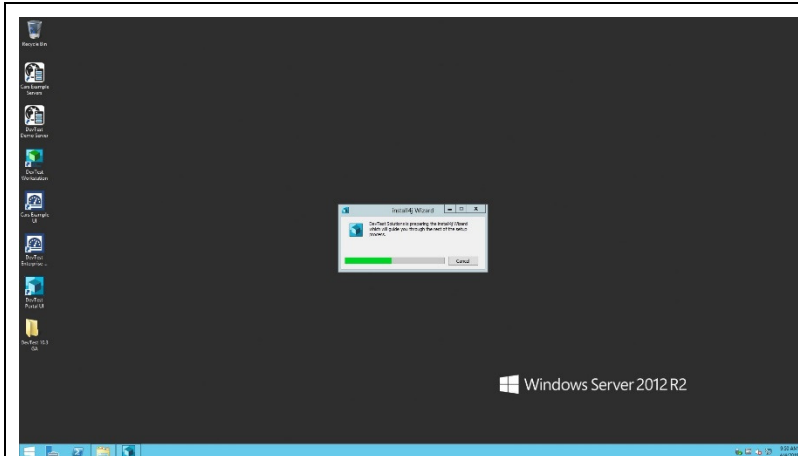
Stop DevTest Services

If you have any DevTest UIs open or Workstation is currently running then this would be a good time to close all those. Also, if the DemoServer is running you should shut it down before following the steps below.

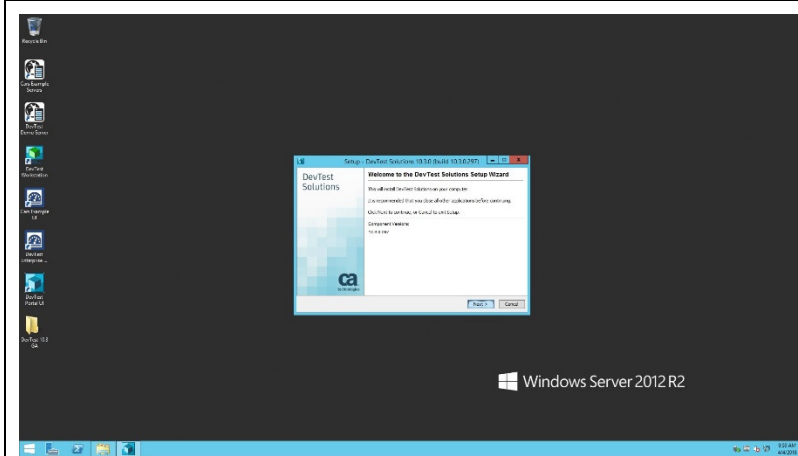
Shutdown the following component services (if your existing DevTest runs as Windows services). This is applicable for the various components installed remotely that connect to the Registry.

- DevTest Enterprise Dashboard
- DevTest Registry Service
- DevTest Coordinator Service
- DevTest Simulator Service
- DevTest VSE Service
- DevTest Portal Service
- DevTest Broker Service

Upgrade DevTest

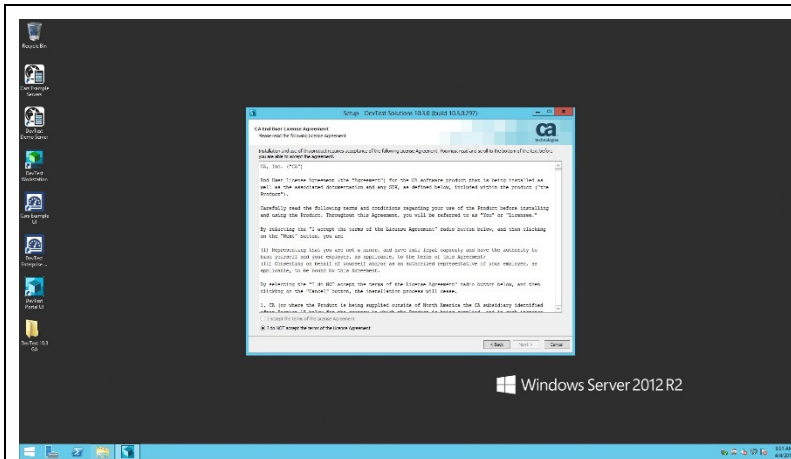


Extract the zip files downloaded previously and **launch the DevTest installation utility** to start the upgrade process.



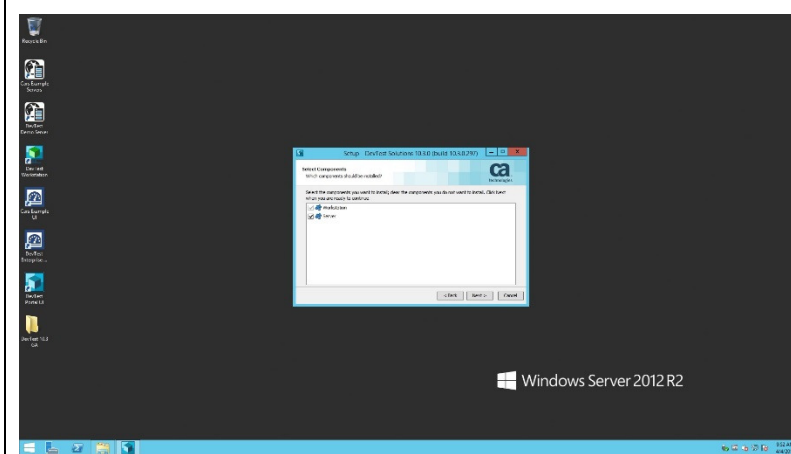
The setup wizard guides you through the install procedure, querying for mandatory and optional product settings.

Click **Next**.



As with other CA products, the installer now requires the user to scroll down the entire EULA before being able to accept it.

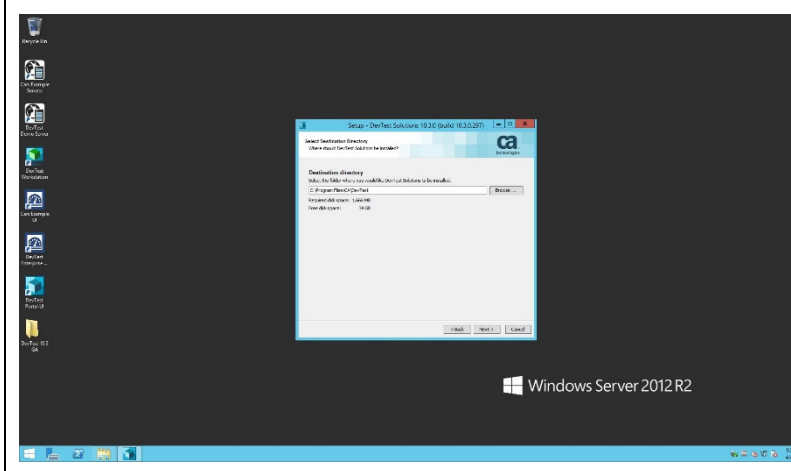
Scroll down, click "I Accept..." and click Next.



Options are offered to deselect the installation of server components if you want to install Workstation only.

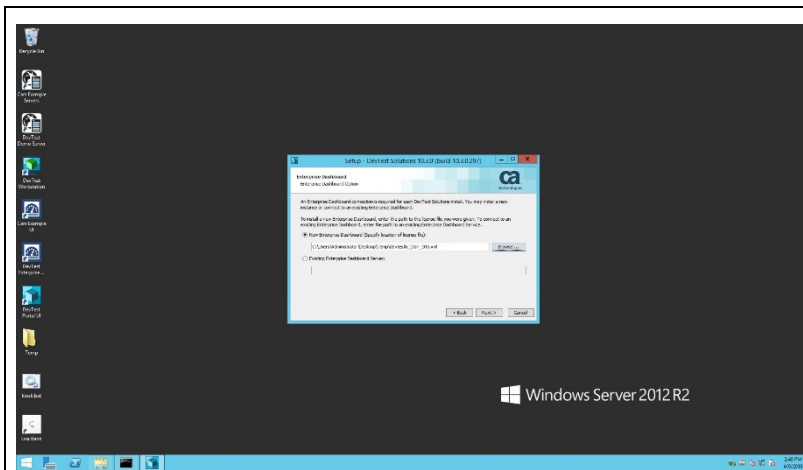
The Workstation component can be deselected only if the server component is deselected before. This means the server installation requires a workstation installation.

We will install DevTest Server components and Workstation on the same Windows machine for the "in-place" upgrade, so click **Next**.



Since you already have DevTest installed as this is an "in-place" upgrade, the installer picks up the previous installation path. Click **Next**.

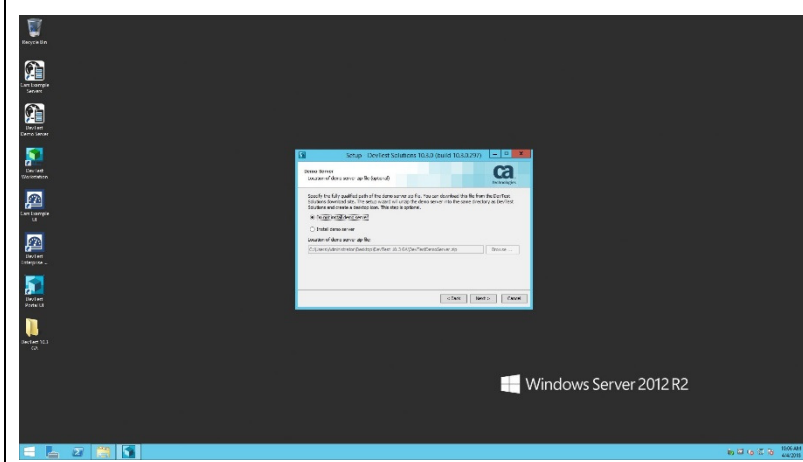
Note: Make sure you have already taken a backup of this folder. We will be doing an in-place upgrade over the existing installation.



Select **New Enterprise Dashboard Server** and specify the location of the new DevTest 10.3 license key file.

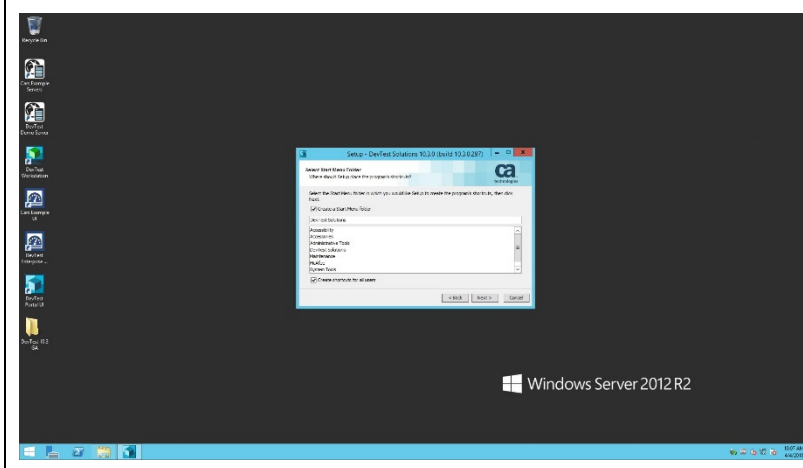
Note: As of DevTest 10.3, you will need a new license file. Contact CA Support by opening a new case at <http://support.ca.com> or call 1-800-225-5224.

Click **Next**.



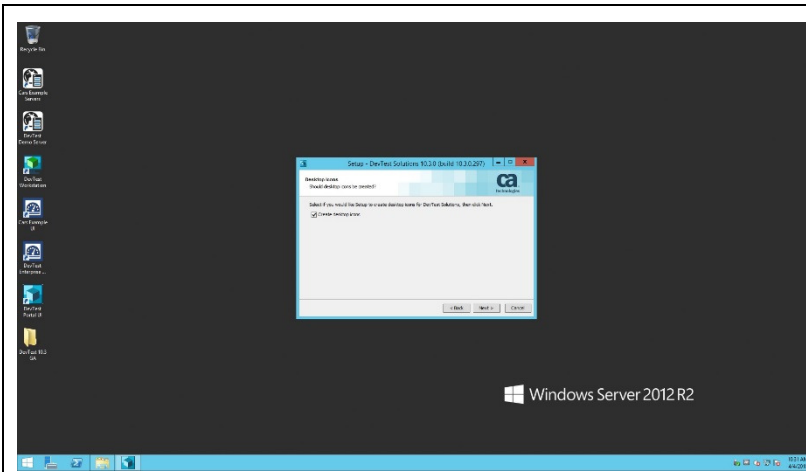
When opting for demo server installation the user must specify the location of the demo server zip file – just as with previous releases.

For our purposes, we do not need Demo Server, so select Do not install demo server and click **Next**.



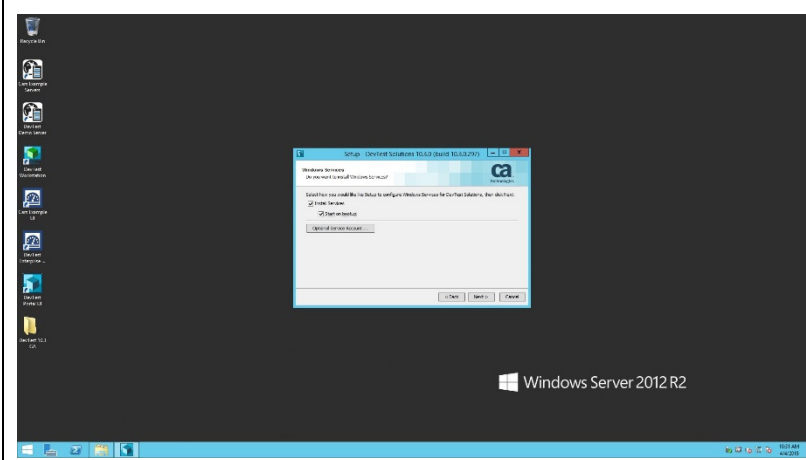
The installer queries for the name of the Menu Folder for DevTest, and if it will be part of the Windows Start menu and if Menu shortcuts shall be created for all.

Click **Next** to create shortcuts.



The next question is about if the user wants to have a desktop icon for DevTest solutions.

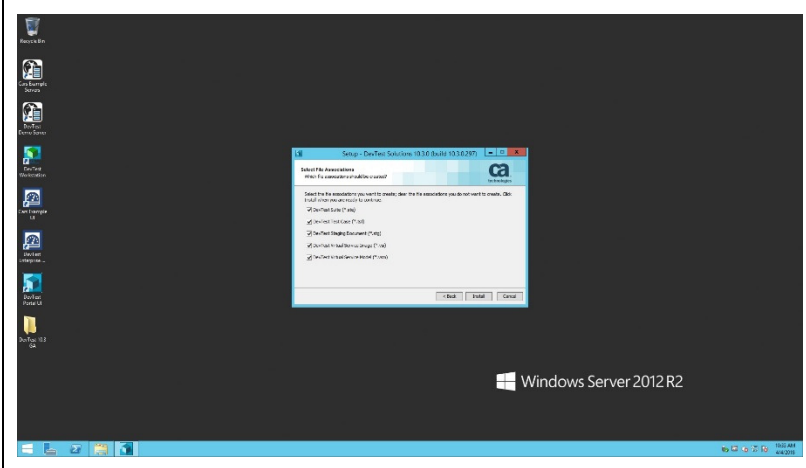
Click **Next** to create a shortcut.



By default, the DevTest services are installed as Windows services. With the default options, DevTest services must be started manually (or by using the provided script in C:\Program Files\CA\DevTest\examples\Setup).

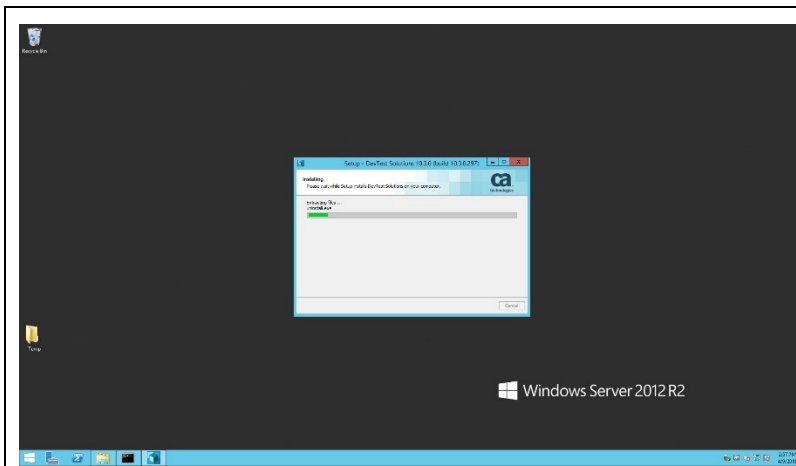
Optionally, the installer can configure the DevTest services for automatic start at system start up. If this is a dedicated DevTest server (and not your local laptop or workstation) we recommend starting DevTest services on bootup. You can also select which account you want to start DevTest.

Since this is a dedicated DevTest Server, **select Start on bootup** and click **Next**.



Options are offered to associate file extensions with DevTest solutions. We will accept the default associations.

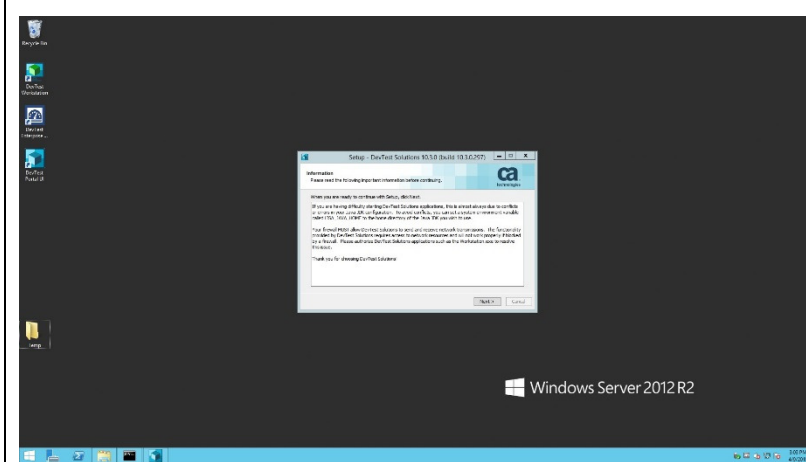
Clicking on the **Install** button to start the installation process.



Wait while the installer updates DevTest.

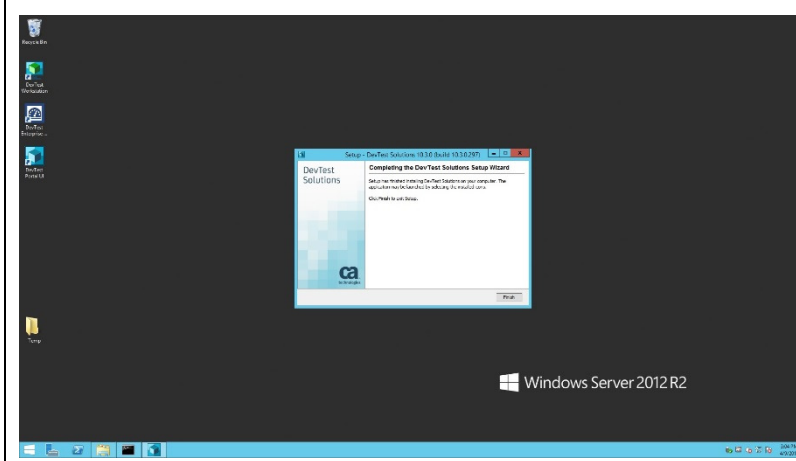
Installation progress is indicated by the progress bar. The upgrade only takes about 5 to 10 minutes to complete, depending on system resources.

Note: For the in-place upgrade, we first uninstall the existing DevTest version before installing the new version and updating associated files. Databases will be updated as well when the DevTest server components are restarted.

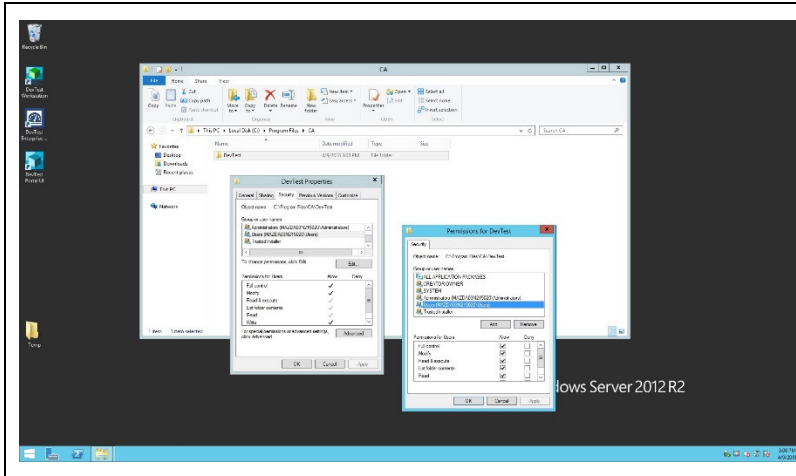


Once the installation is completed, some post install instructions are provided. Please read and follow carefully.

Click **Next** to finish the installation.

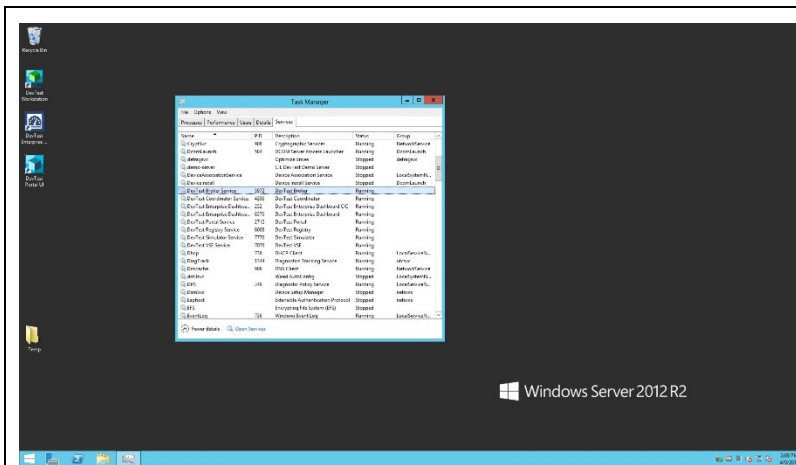


Click **Finish** to close the Setup Wizard.



Note: Make sure that the installation directory (default on Windows: %PROGRAMFILES%\CA\DevTest) is enabled for Read/Write access for all users. Otherwise import of RR Pairs will fail because the import will store data in the projects folder under {{LISA_HOME}}, which is installed at path under %ProgramFiles%.

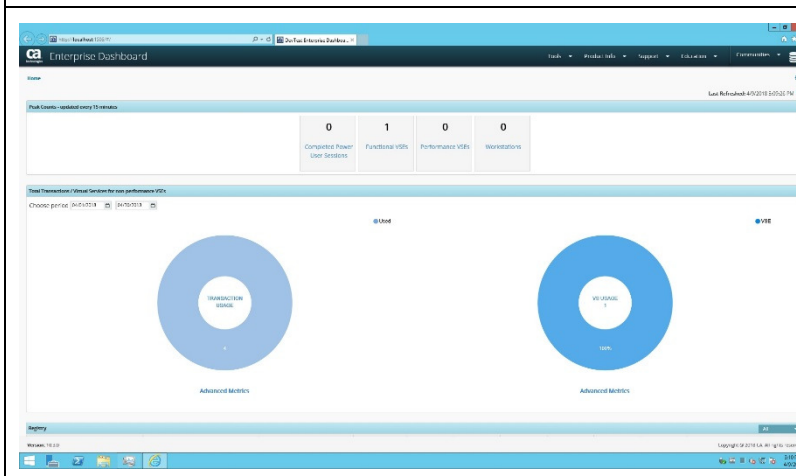
Verify DevTest Installation



After installation, the DevTest Enterprise Dashboard Service must be started first prior to starting DevTest Registry Service, which communicates with the Enterprise Dashboard.

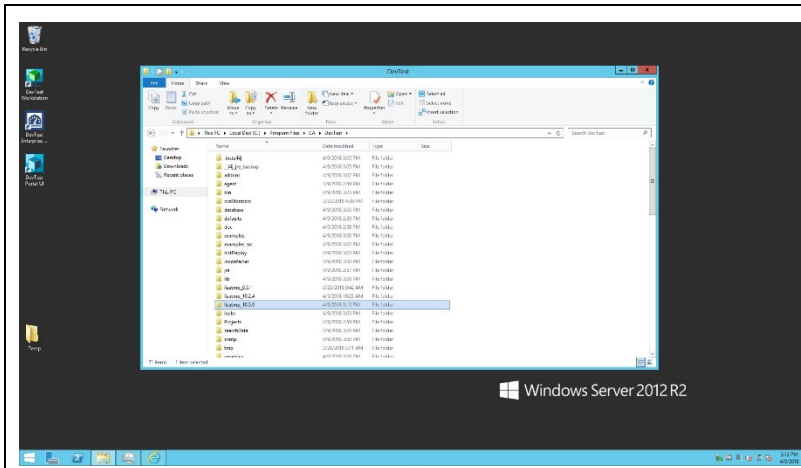
Start the DevTest services in this order:

1. Enterprise Dashboard
2. Registry
3. Portal
4. Broker
5. Coordinator
6. Simulator
7. VSE

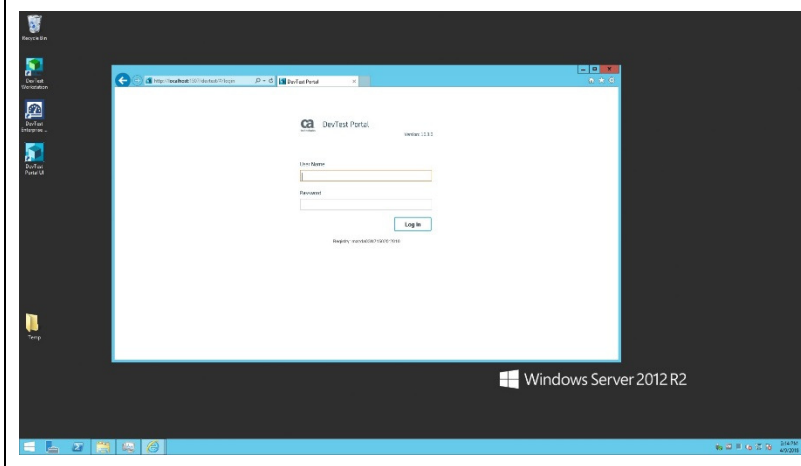


<http://localhost:1506> should show the new UI and upgraded Registry information.

Note: Before you bring up the Enterprise Dashboard UI, be sure to clear and delete your browser cache as the UI for the Enterprise Dashboard has been changed in 10.3.



Verify that the lisatmp_10.3.0 folder is created. This is if DevTest is started as Windows services. If started as regular application from command line lisatmp_10.3.0 is under %USERS%\<user>.



Since this is the first time DevTest is starting, give it about five minutes to load the various components, then verify that you can log in to the DevTest Portal as admin user.

Chapter 4: Post-Upgrade Tasks

Licensing

DevTest uses “concurrent user” licensing, based on the maximum allowed concurrent user sessions by user type. This information is collected automatically by the Enterprise Dashboard. The Local License Server (LLS) and Internet Based License Server are no longer supported.

The license is file-based, where there is one file per company. This file activates DevTest at the initial startup following installation. The license key file is associated with the Enterprise Dashboard. You will only be prompted for the license key file when installing a new Enterprise Dashboard, not when upgrading an existing Enterprise Dashboard to a new version.

A [Usage Audit Report](#) can help you assess compliance with your license agreement. Users with administrative privileges can access this report from the Enterprise Dashboard.

You can find more information about [license administration](#) in the product documentation. Contact your account team if you have any questions about your specific licensing agreement.

Enterprise Dashboard

The [Enterprise Dashboard](#) became a required component and was integrated into the DevTest installer. You can [configure Enterprise Dashboard to use an external database](#) by editing the **dradis.properties** file in the **<LISA_HOME>** directory.

When you do an in-place upgrade with an existing Enterprise Dashboard, the schema of the Enterprise Dashboard database is updated and the existing data is maintained. You do *not* need to create a new database.

The database user must have DBA privileges. Otherwise, the Enterprise Dashboard will fail to start after the upgrade.

You cannot change the type of database during the upgrade process (e.g., you cannot switch from Oracle to SQL Server).

Registry

When you do an in-place upgrade, the schema of the registry database is updated and the existing data is maintained. You do *not* need to create a new database. The **<LISA_HOME>\Projects** folder (e.g., C:\Program Files\CA\DevTest\Projects) is also maintained. The registry database is not upgraded by the installer. However, after finishing the upgrading processes by the installer, the first invocation of registry will upgrade the registry database automatically.

The database user must have DBA privileges. Otherwise, the registry will fail to start after the upgrade.

You can no longer configure registries through the Enterprise Dashboard interface. Registries must be configured through the properties files.

You cannot change the type of database during the upgrade process (e.g., you cannot switch from Oracle to SQL Server).

The registry and all the underlying components, including DevTest Workstation, must belong to the same release version. Mixing component versions under a registry is not supported.

Portal

The [DevTest Portal](#) is a web-based application that is intended to become the primary user interface for DevTest Solutions. The portal provides capabilities for some of the most-used workflows in DevTest. Over time, CA will enhance the functionality of DevTest Portal and will eventually sunset the other interfaces in the DevTest product line, including DevTest Workstation.

Capabilities of DevTest Server Console (e.g., ACL) have been moved to the DevTest Portal.

Properties Files

It is highly recommended that you review the properties files after the upgrade to confirm all settings have been preserved. Some properties and properties files change during the upgrade and may need to be manually updated (e.g., **dradis.properties** to support LDAP configuration).

- If you created a **local.properties** file, the file is *preserved* as is.
- If you created a **site.properties** file, the file is *preserved* as is.
- A default **_dradis.properties** file is *created*. Any customized properties for Enterprise Dashboard in your **local.properties** or **site.properties** file are *migrated* to a **dradis.properties** file.
- The default **_local.properties** file of the existing installation is *replaced* with the 10.3 version.
- The default **_site.properties** file of the existing installation is *replaced* with the 10.3 version.
- The **lisa.properties** file of the existing installation is *replaced* with the 10.3 version. You should *never* modify the **lisa.properties** file. If you did make changes to the **lisa.properties** file, the upgrade process overwrites the changes. You should move those changes to **site.properties** or **local.properties** before the upgrade.

If you need to change a property to a different value than what is delivered in **lisa.properties**, update the **local.properties** or **site.properties** files. These are delivered as templates, so copy **_local.properties** to **local.properties** and **_site.properties** to **site.properties**. Remember the underscore before the properties file name (e.g., **_local.properties**) means the file is *not* active. Removing the underscore activates the file (and the properties within). Always verify the out-of-the-box settings before adding in external database and security configurations.

Properties files are evaluated in the following order:

- **lisa.properties**
- **site.properties** (take precedence over **lisa.properties**)
- **local.properties** (takes precedence over **site.properties** and **lisa.properties**)
- Command line and **vmoptions** files (takes precedence over all properties defined in any of the properties files)

Custom Folders

If the existing installation contains any custom folders, the folders are *preserved* as is.

Custom JAR Files

If the existing installation contains any custom JAR files in the **<LISA_HOME>\lib** directory, the JAR files are *preserved* as is.

Memory Allocation Settings

If the existing installation contains any modified **.vmoptions** files in the **<LISA_HOME>\bin** directory, the files are preserved as is.

Projects

The Projects directory will be deleted. Save your Projects directory outside the **<LISAHOME>** directory (e.g. C:\DevTest_Projects_Backup).

Starting and Stopping DevTest

Start the DevTest Server processes (or services) in the following sequence:

1. Start the Enterprise Dashboard
2. Start each Registry
3. Start DevTest Portal
4. Start the following components in any order:
 - a. Broker
 - b. Coordinator
 - c. Simulator
 - d. Virtual Service Environment

Stop DevTest processes or services in the reverse order.

Access Control and LDAP Configuration

Capabilities of DevTest Server Console have been moved to the DevTest Portal. All ACL configurations must be performed through the Portal.