

# CA Technologies Security Vision & CA SiteMinder® Roadmap and Product Family Update

Herb Mehlhorn  
Sr. Director, Product Management

agility  
made possible™

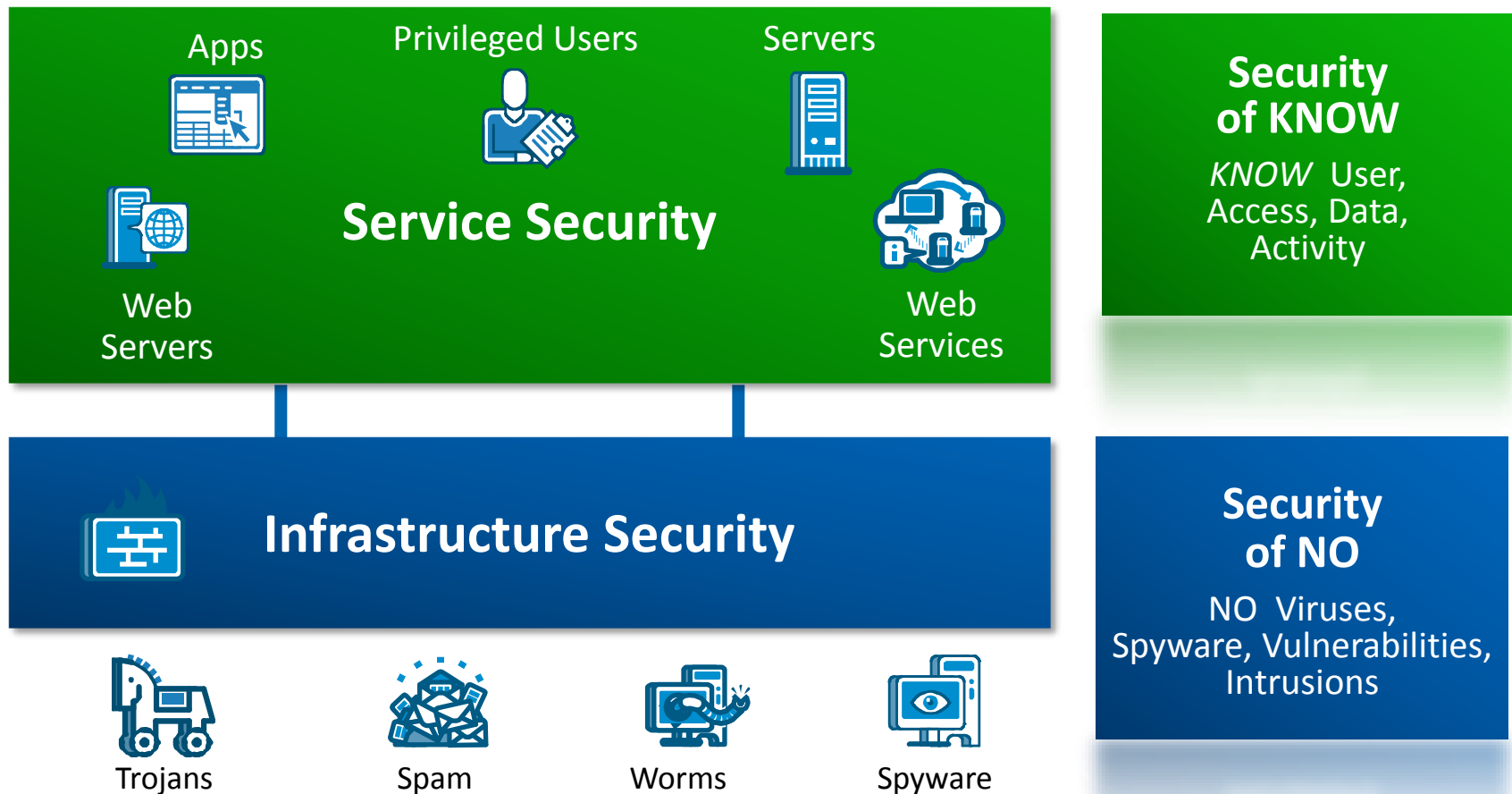


# agenda

- CA Technologies Strategy
- Recent Releases
- Roadmap
  - SiteMinder 12.5
  - Looking ahead

# a unified approach to security

moving from “No” to “Know”



# service security – the key challenge

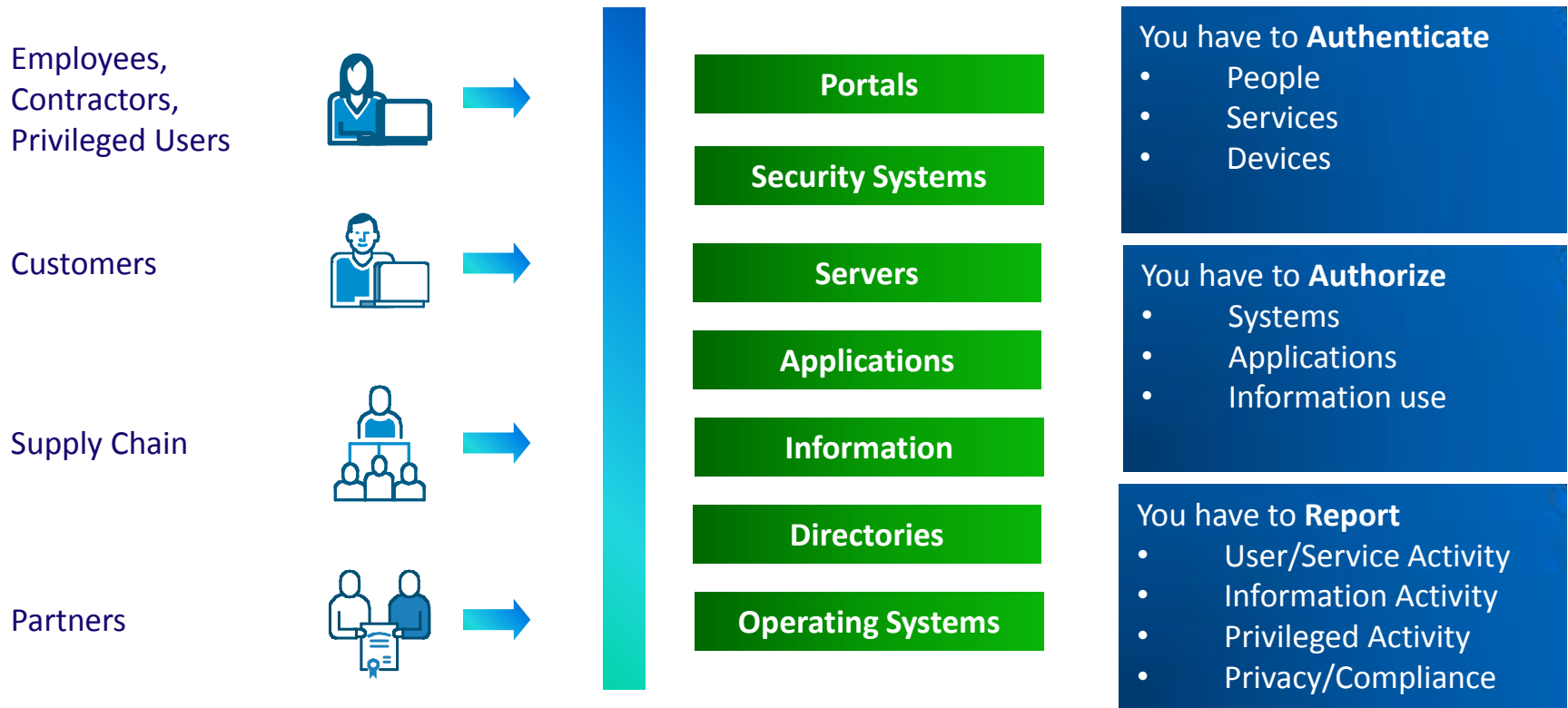
Connect users to information



Seems easy enough

# but, things are getting more complex every day....

We help you ensure the **right people** have the **right access** to the **right information** at the **right time**



# sources of change...



**73% of workers** will be mobile by 2012<sup>1</sup>



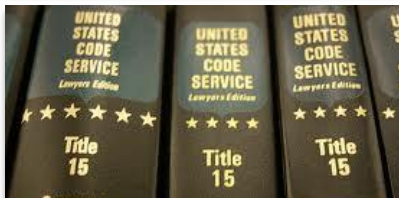
**62% of IT organizations** will have flat or reduced budgets<sup>2</sup>



**By 2015, 40% of the enterprise security controls** will be virtualized, up from less than 5% in 2010<sup>3</sup>



**63% of companies** are using, or implementing SaaS solutions<sup>4</sup>



There are still over **4,000 (approx) new rules/regulations** issued each year by the US government<sup>5</sup>

Sources:

1. InformationWeek
2. eWeek
3. ComputerWorld
4. CA Technologies survey
5. ComplianceWeek

# the shift in power from IT to consumers

## IT Driven



## Consumerization of IT



## Consumer-Driven IT



Increasing IT agility, decreasing control

Use only IT-supplied devices



Use employee-owned devices



Uses a range of devices to access role-based services

Dependent on IT



Relies on IT for access to IT



Consumes services, not IT apps

On-premise systems and apps

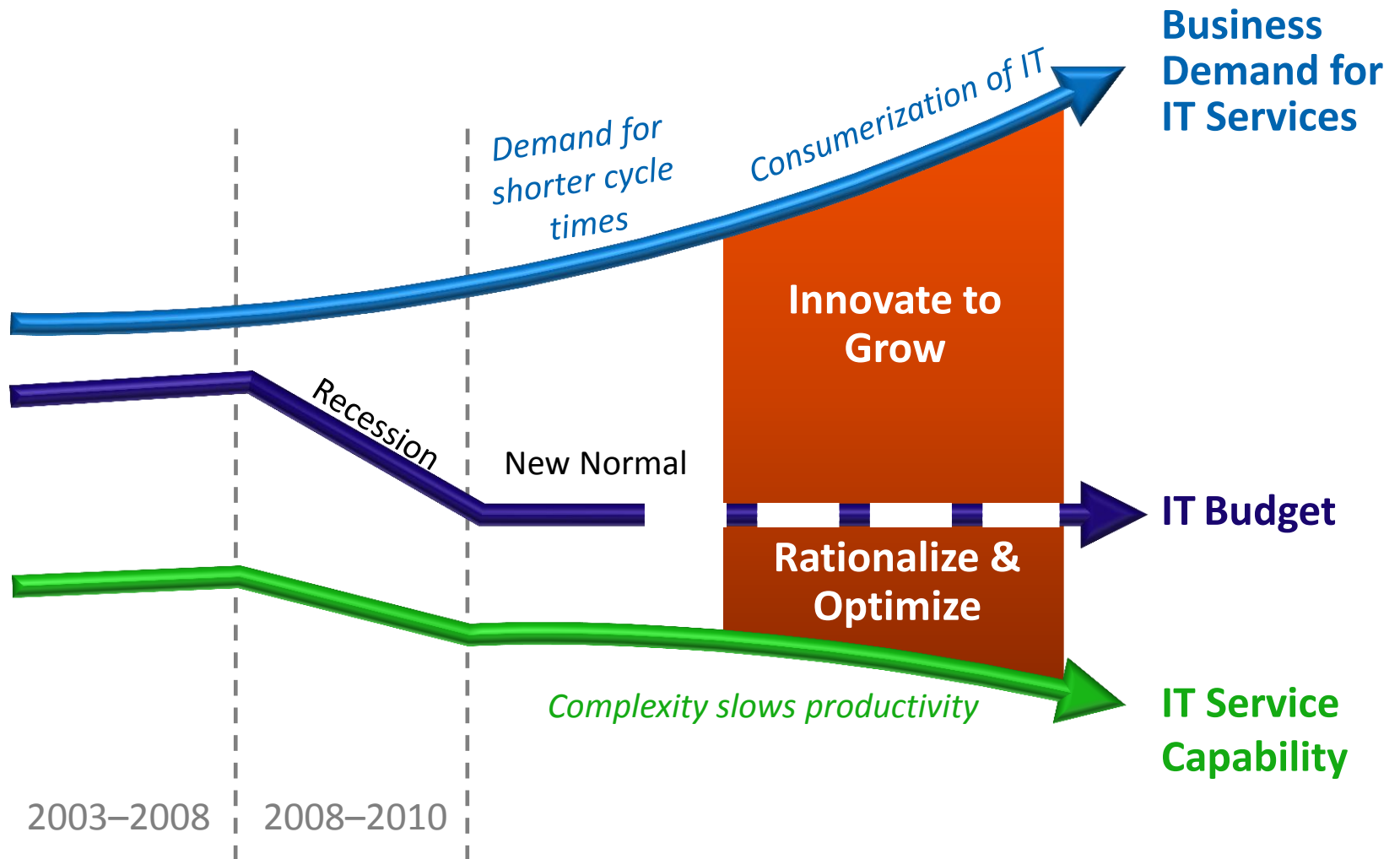


Use of SaaS apps, IT begins to move some functions to cloud



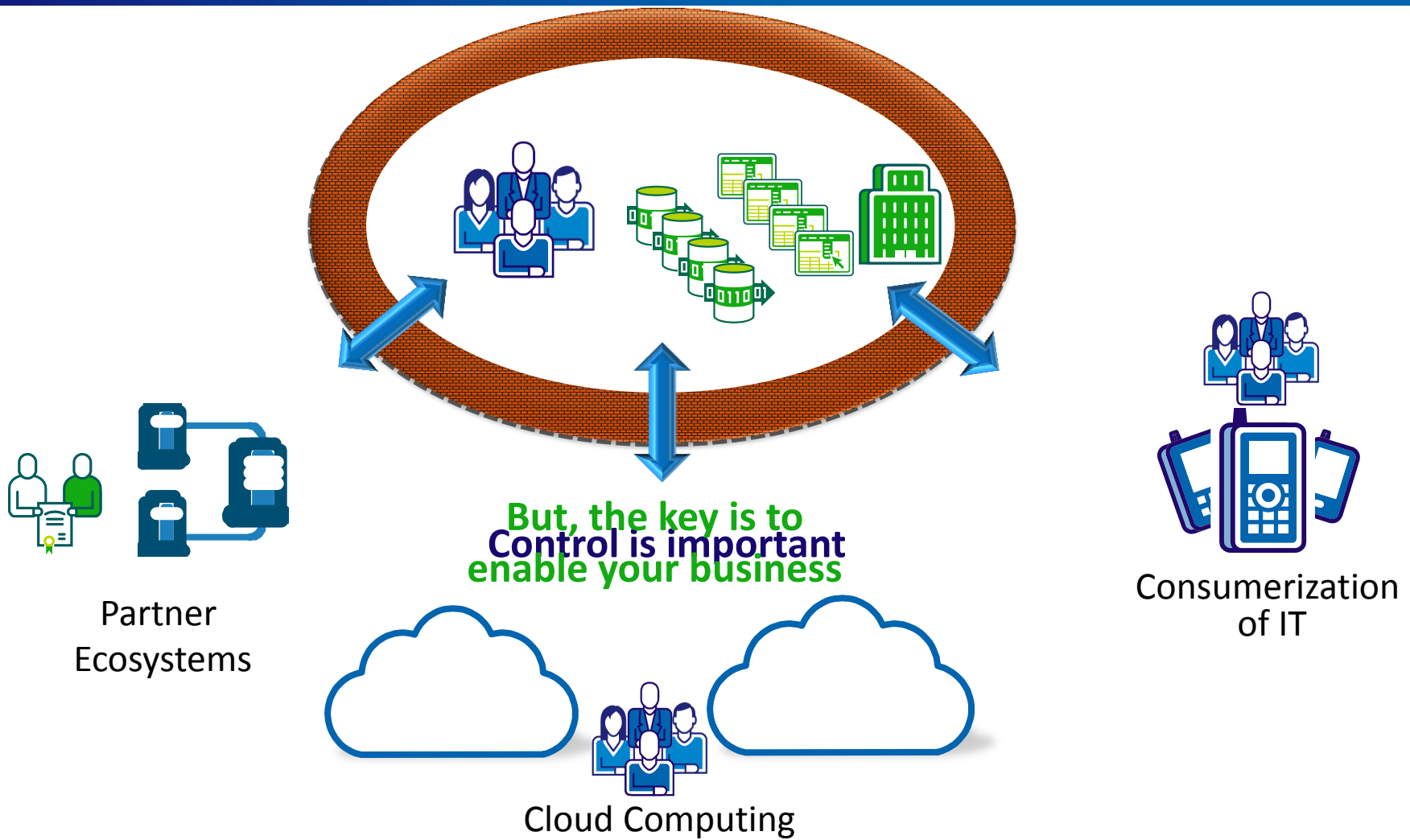
“Grow the business”  
- Wide adoption of cloud

# business shift: rationalize and optimize, but also *innovate* to grow





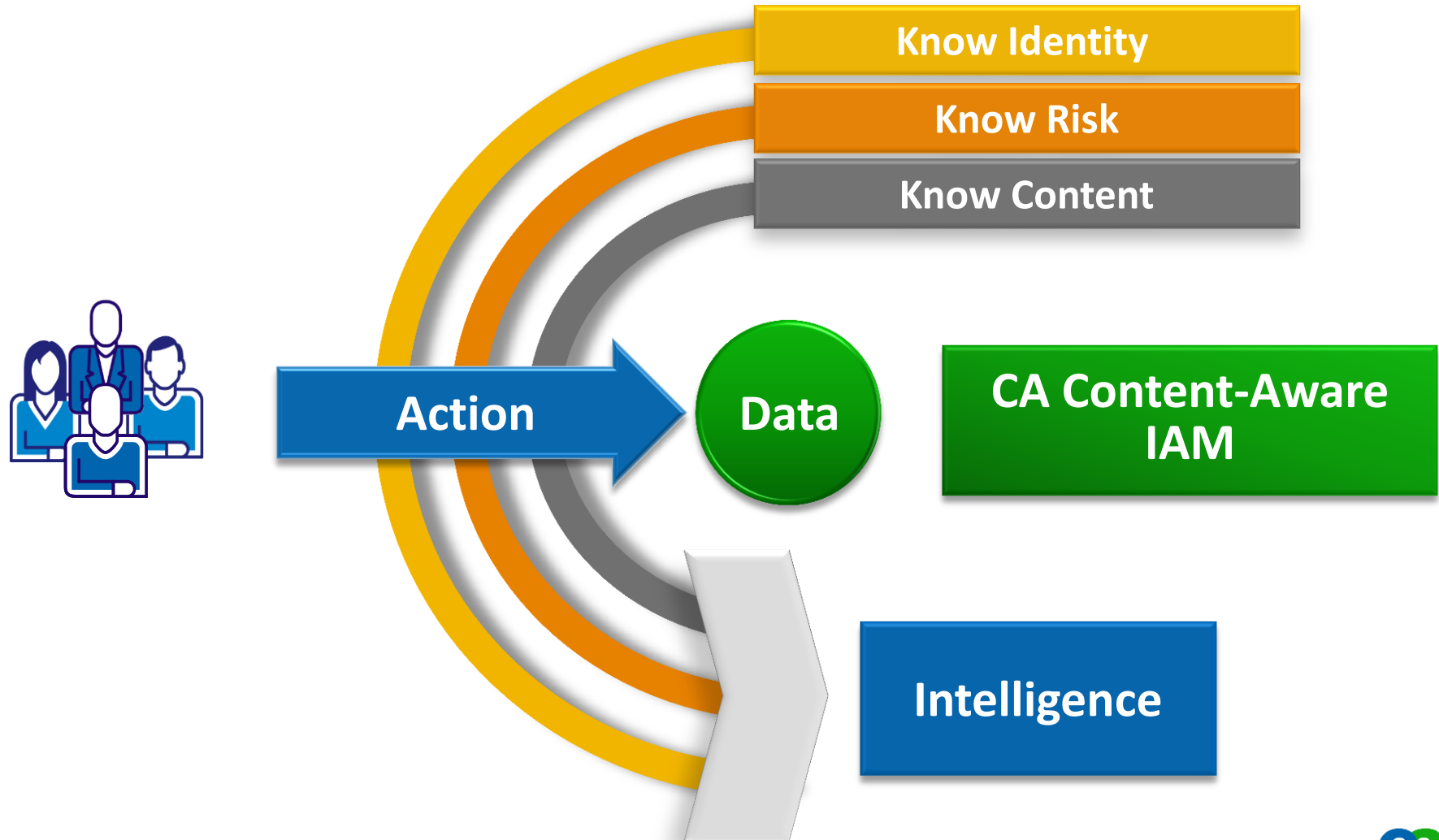
# technology shift: you must not only *control*, but also *enable business growth*



**Control + Business Enablement = True Information Security**

# the CA Technologies Content-Aware IAM solution

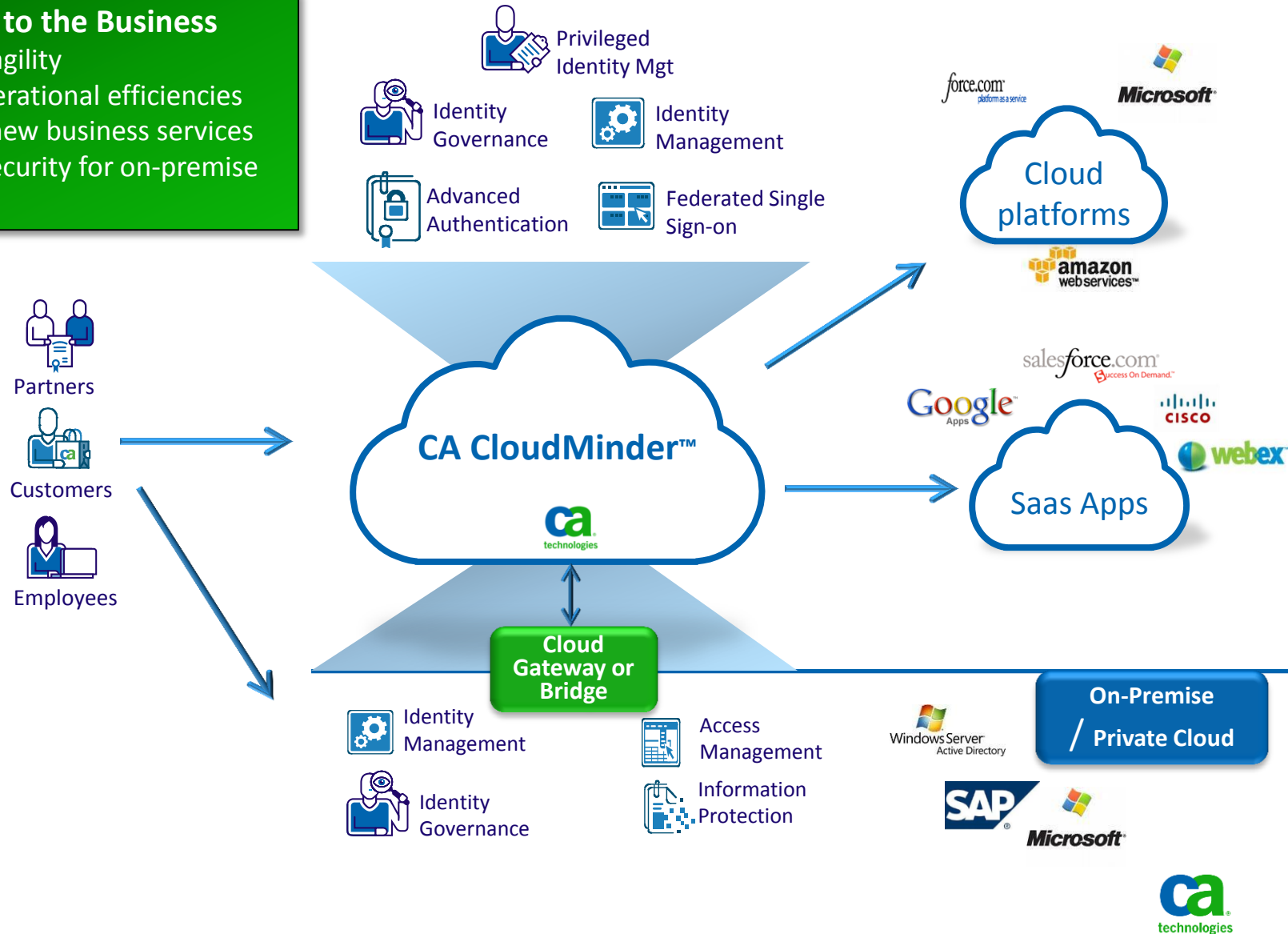
providing control and business enablement



# Our strategy for cloud-connected, secure enterprise: on-premise and cloud security – *agility and choice*

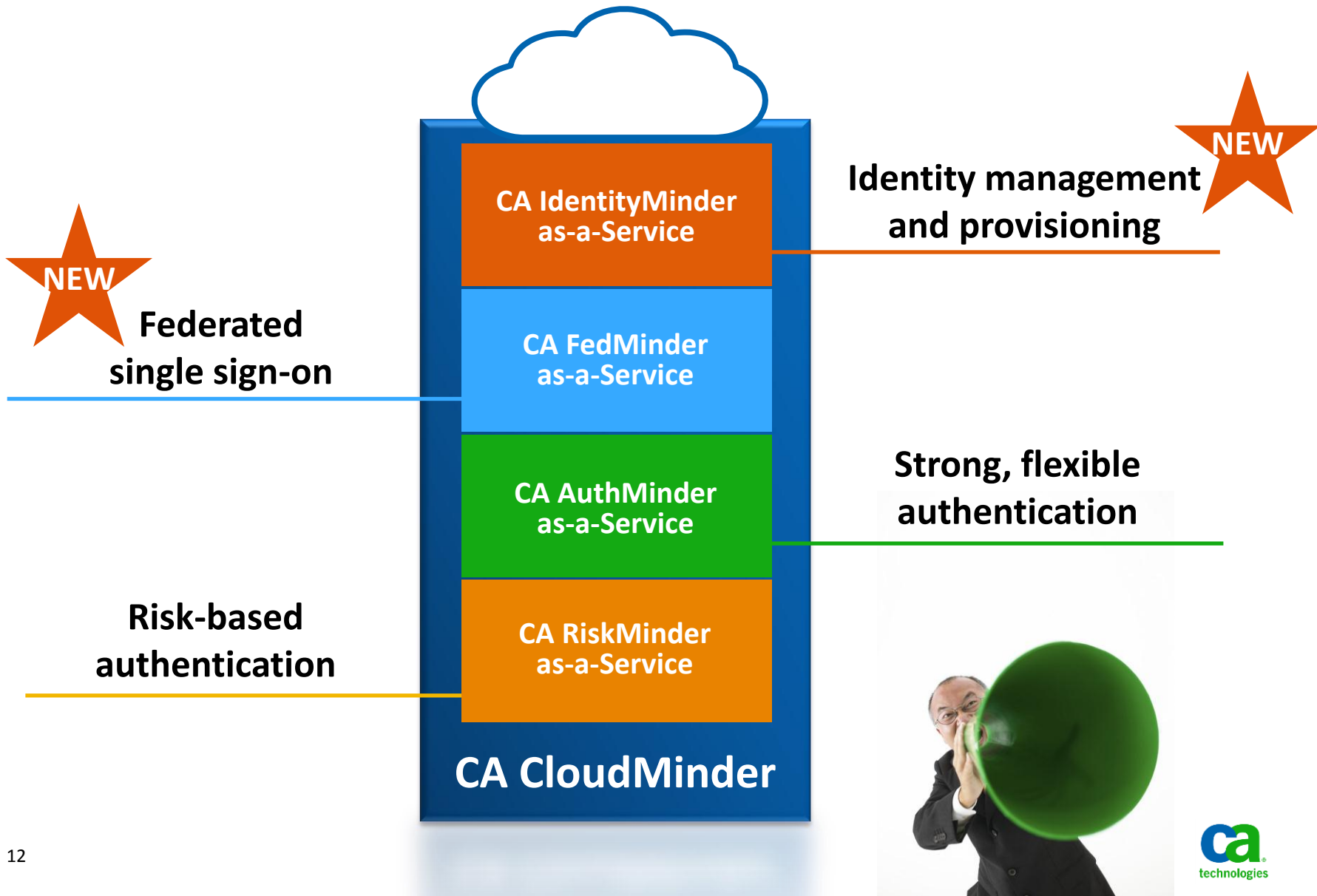
## Benefits to the Business

- Improve IT agility
- Improve operational efficiencies
- Accelerate new business services
- Improved security for on-premise or cloud



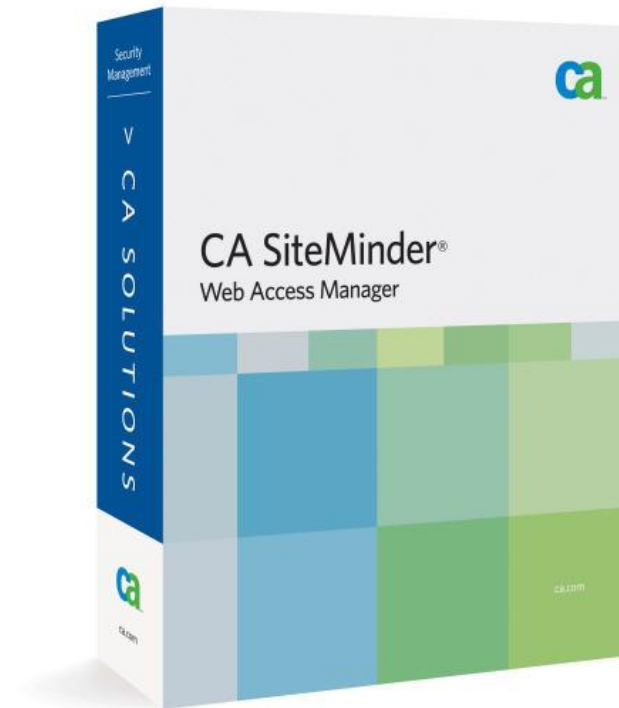
# CA World announcement

## *two new SaaS offerings*



# agenda

- CA Technologies Strategy
- Recent Releases
- Roadmap
  - SiteMinder 12.5
  - Looking ahead



# recent releases

## Press Releases

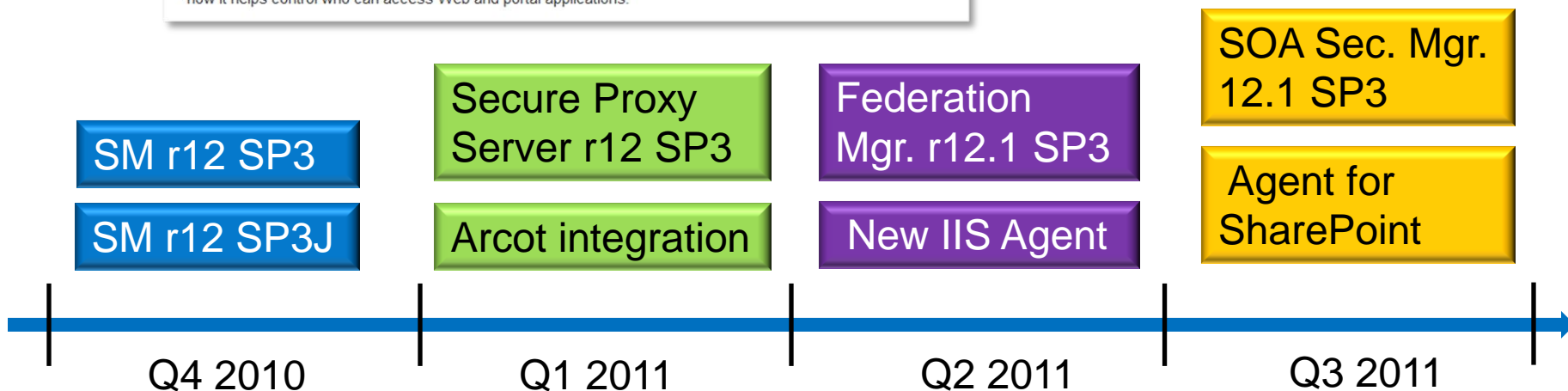
### CA SiteMinder Now an SAP-Endorsed Business Solution

**CA Technologies Market-Leading Web Access Management Solution – Through Integration With SAP NetWeaver® Secures Access to SAP® Applications**

Islandia, NY – February 16, 2011 – CA Technologies today announced that its CA SiteMinder® Web access management solution is now an SAP-Endorsed business solution. CA SiteMinder complements the security features in the SAP NetWeaver® technology platform, providing secure access to SAP® applications and helping securely deliver essential information to millions of employees, partners, and customers.

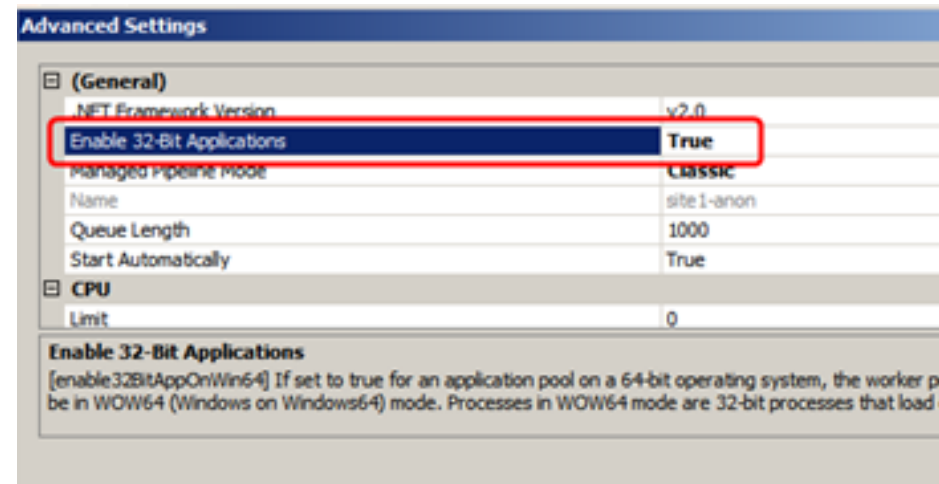
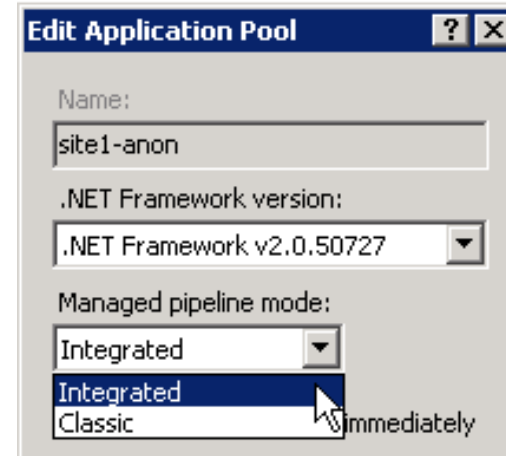
CA SiteMinder gives customers the ability to manage user authentication and authorization for critical Web application and portal applications. By centralizing the management of these key services, security silos that typically create increased security costs can be eliminated. In addition, customers have a comprehensive report of user access, simplifying compliance and audit. CA SiteMinder also provides Web single sign-on across the IT environment to help simplify user access and reduce IT administration costs.

"Moving applications online and into the cloud brings significant advantages, but it also invites security risks that CA SiteMinder helps to mitigate," said Mike Denning, general manager, Security, CA Technologies. "SAP's endorsement of CA SiteMinder underscores the value of our solution in how it helps control who can access Web and portal applications."



# enhanced IIS web agent

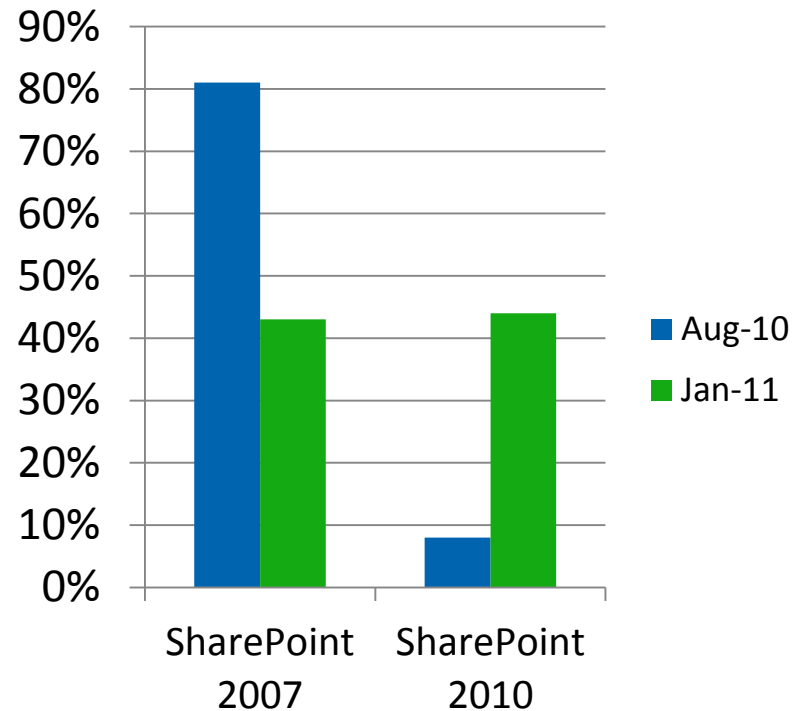
- Extensible IIS 7.x architecture - HTTP modules
  - modules can be added or removed and provide individual features that the server uses to process requests
- Supports
  - integrated & classic pipeline modes
  - application routing feature
  - configuration for IIS virtual sites
  - protection of both 32-bit and 64-bit apps on one 64-bit IIS server
  - IIS 7 and 7.5



# SiteMinder Agent for SharePoint®

- Extend all the benefit of your SiteMinder environment:
  - ✔ SiteMinder repositories
  - ✔ SiteMinder authentication schemes
  - ✔ Site level authorization policies
  - ✔ SSO with other SiteMinder-protected applications
  - ✔ Step-up authentication
  - ✔ Password policies and password services

*What version of SharePoint represents the majority of your deployment?*



Source: Global 360, Inc. 2010 and 2011, [www.global360.com](http://www.global360.com)



# SiteMinder Agent for SharePoint

**Create New Web Application**

**Authentication**

Select the authentication for this web application.

[Learn about authentication.](#)

☒ Claims Based Authentication  
☐ Classic Mode Authentication

**Claims Authentication Types**

Choose the type of authentication you want to use for this zone.

Negotiate (Kerberos) is the recommended security configuration to use with Windows authentication. If this option is selected and Kerberos is not configured, NTLM will be used. For Kerberos, the application pool account needs to be Network Service or an account that has been configured by the domain administrator. NTLM authentication will work with any application pool account and with the default domain configuration.

Basic authentication method passes users' credentials over a network in an unencrypted form. If you select this option, ensure that Secure Sockets Layer (SSL) is enabled.

☐ Enable Windows Authentication

☒ Integrated Windows authentication

NTLM

☐ Basic authentication (credentials are sent in clear text)

☐ Enable Forms Based Authentication (FBA)

ASP.NET Membership provider name

ASP.NET Role manager name

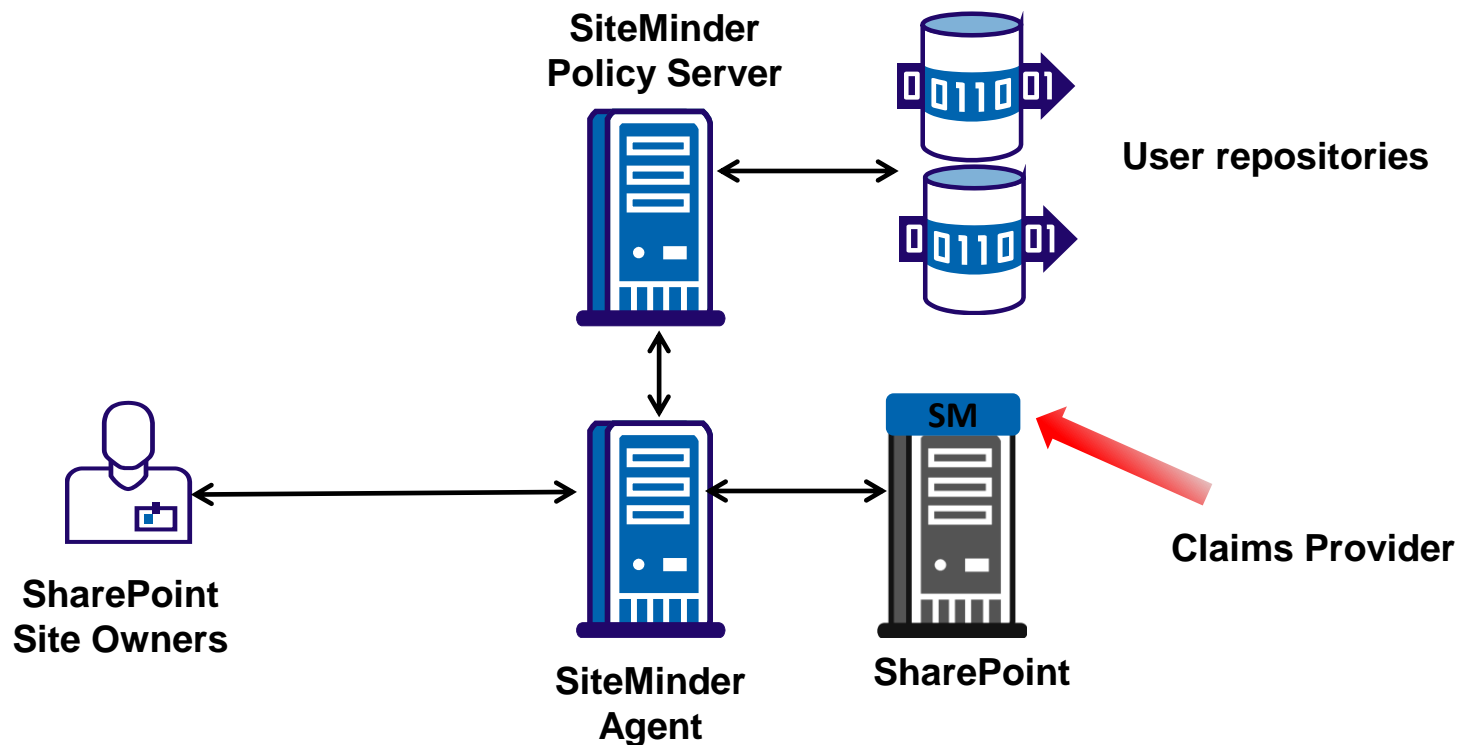
☒ Trusted Identity provider

Trusted Identity Provider

☒ CA SiteMinder POC

# SiteMinder Agent for SharePoint

SharePoint site owners can use the People Picker to provision users. The SiteMinder claims provider and claims web service make this possible.

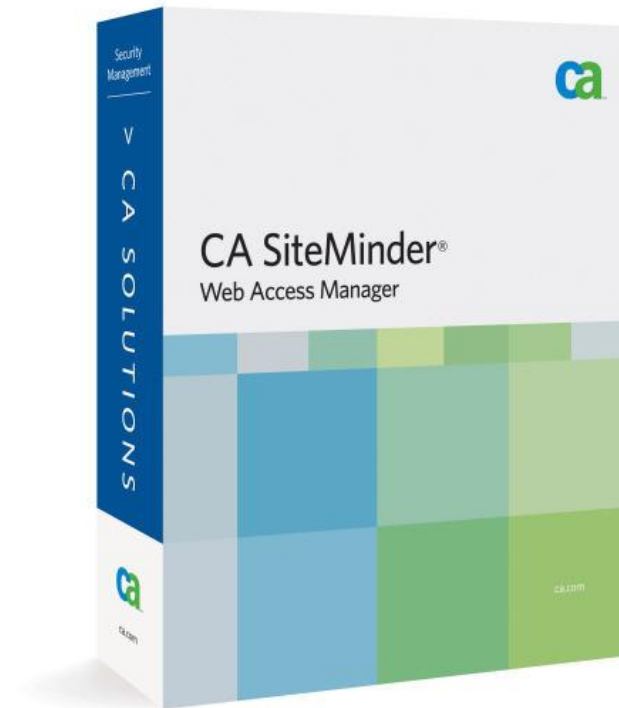


# SOA Security Manager 12.1 SP3

Feature	Description	Benefit
<b>FIPS 140-2 Certification</b>	Migrate cryptographic libraries to those that have been FIPS 140-2 certified	<ul style="list-style-type: none"><li>• Security certification which is often required by Federal agencies</li></ul>
<b>SHA-2 Support</b>	Migration of digital signatures to use the SHA-2 family of hash functions	<ul style="list-style-type: none"><li>• Improved security and assurance of digital signatures</li></ul>
<b>Updated Platforms and 3<sup>rd</sup> Party libraries</b>	Update the operating systems supported by the policy server and the agents for SOA Security Manager	<ul style="list-style-type: none"><li>• Enable deployment on more recent version of operating environments</li></ul>
<b>Updated Policy Server</b>	Update the underlying policy sever to a more recent version of the SiteMinder Policy Server	<ul style="list-style-type: none"><li>• Enable deployment on more recent version of the policy server that is more robust and includes recent fixes.</li></ul>

# agenda

- CA Technologies Strategy
- Recent Releases
- Roadmap
  - SiteMinder 12.5
  - Looking ahead



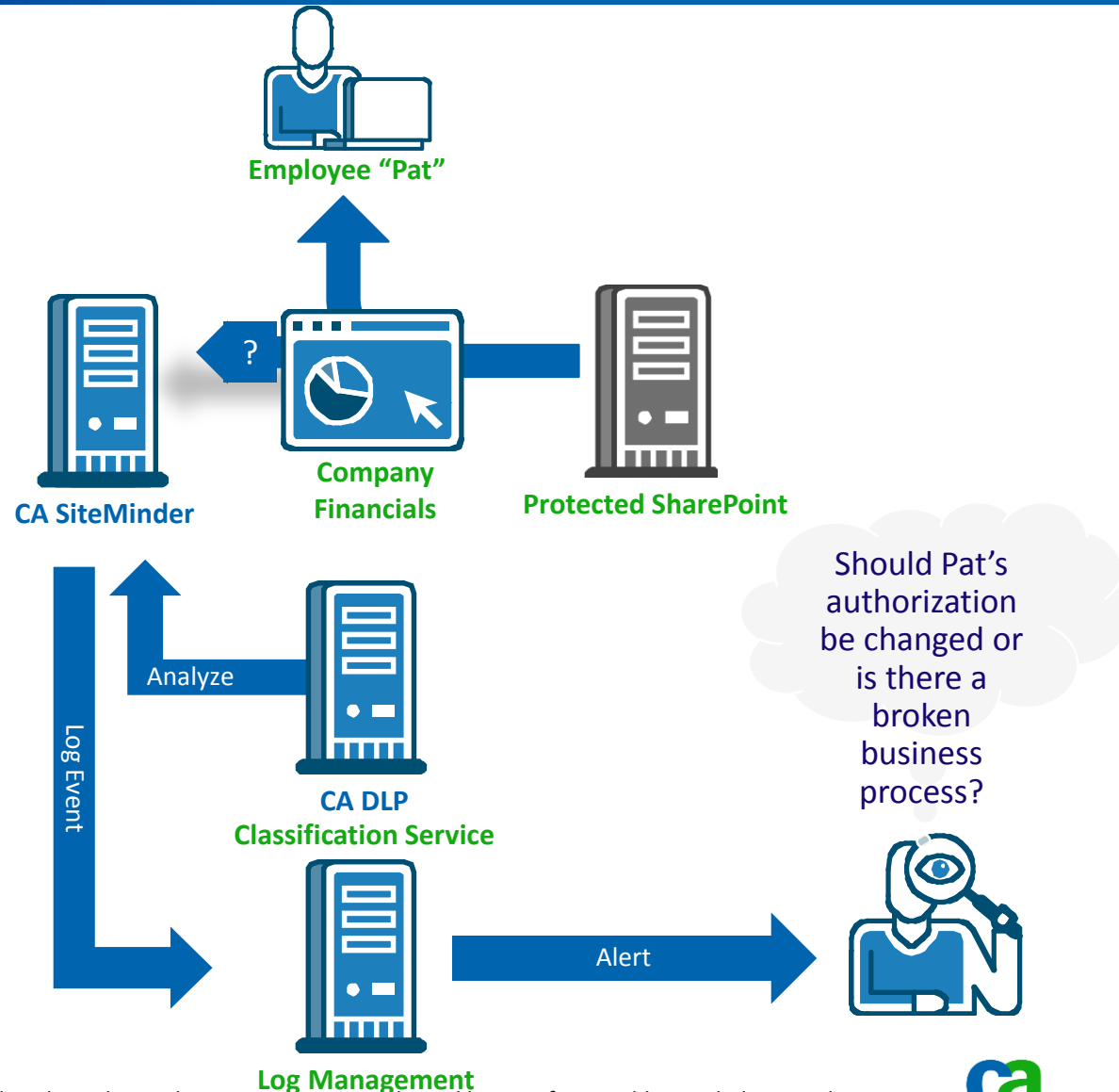
# SiteMinder (with Federation) 12.5

Feature	Description	Benefit
<b>Content Aware Access Control</b>	Evaluates data sensitivity in making access policy decisions for SharePoint 2010	Increased security for sensitive data contained within collaborative SharePoint environments
<b>Support for Web 2.0/Identity 2.0</b>	Support for newer forms of web applications (web applications with heart beats) and user authentication (e.g. OpenID). New session store to persist/retrieve authentication context data.	Extends CA SiteMinder benefits (web sso, session mgmt, common security layer, etc.) across applications developed with newer technologies
<b>Risk-based Identity Assurance</b>	Extend ability of SiteMinder rules to use CA Arcot RiskFort™ risk factor in realm and application policy evaluation decisions	Improve assurance level of authorization decisions by considering risk factor of a web transaction
<b>Enhanced Federation Management</b>	Improved federation administration, support for eGov, attribute mapping, SLO/SOAP	Simplify federation use with CA SiteMinder
<b>Simplified SiteMinder Management</b>	Features which simplify CA SiteMinder management: agent discovery, administrative scoping, hardware load balancer support, centralized cert and key store	Lower overall TCO for SiteMinder and establish architecture for SaaS/Cloud implementations

# SiteMinder (with Federation) r12.5

## *content-aware access management for SharePoint 2010*

- Pat attempts to access a newly uploaded document on a protected SharePoint site
- Before granting access SharePoint checks with the Identity Centric DLP service to see if the content is sensitive and now has more intelligence to make the right decision
- Event information is shared with the log management solution to proactively address future violations

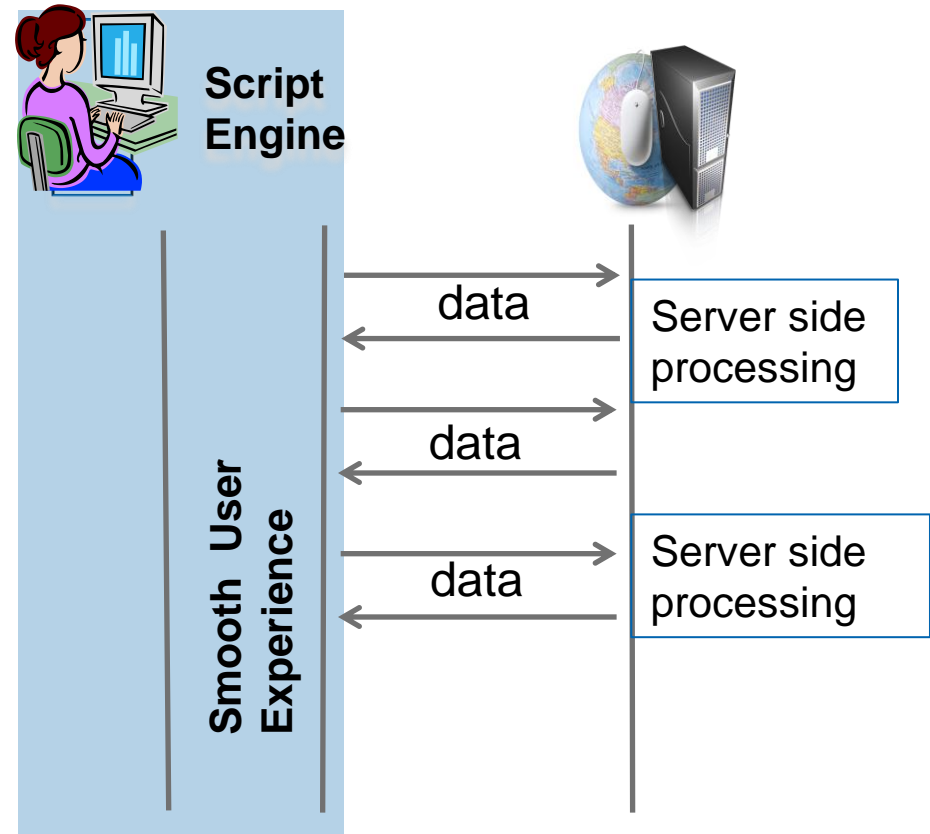


# SiteMinder (with Federation) r12.5

## web 2.0

### Web2.0 Technologies:

- Examples of Web 2.0 technologies include:



# SiteMinder (with Federation) r12.5

## web 2.0

To protect Web 2.0 applications, SiteMinder will address the following challenges:

- Application polling which can prevent idle expiration
- Data responses - SiteMinder authentication challenges and URL redirections are not expected
- HTTP methods other than GET/PUT

Infrastructure Federation Policies Reports Administration

Application > Domain > Expression > Global > Password

### Modify Rule: ProtectDemoSite

Rules > Modify Rule: ProtectDemoSite

#### General

Name: ProtectDemoSite Description:

Domain: DemoDomain Realm: SiteMinderDemo

#### Attributes

Realm and Resource		
Resource *	<input type="text"/>	
Effective Resource:	iis7demoagent/SmDemo/*	
Regular Expression	<input type="checkbox"/>	

#### Action

- ☒ Web Agent actions
- ☐ Authentication events
- ☐ Authorization events
- ☐ Impersonation events

Action:

Connect  
Delete  
Get  
Head



# Web 2.0 Sample Applications

## CA SiteMinder Phoenix – Web 2.0 Support

### Web 2.0 Sample Application

- Sample applications will be offered for the following technologies:
  - AJAX
  - Silverlight
  - Adobe Flex
  - Java Web Start

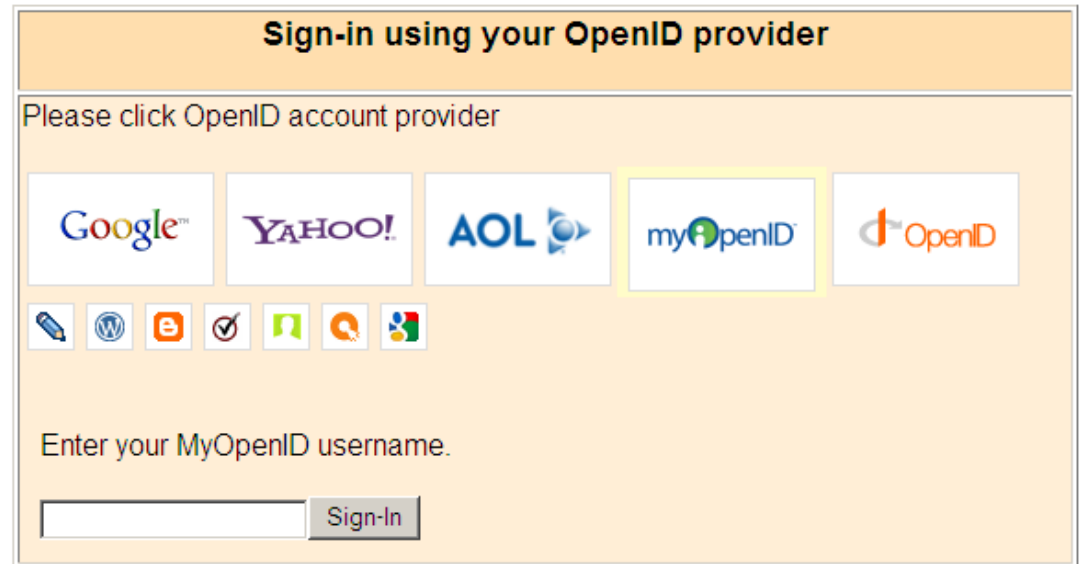


# SiteMinder (with Federation) r12.5

## OpenID 2.0



- Authentication scheme
- ICAM support
- Configuration to store claims in session store for authorization
- Claims logged to trace log file



The screenshot shows a web interface for signing in using an OpenID provider. The title bar reads "Sign-in using your OpenID provider". Below this, a prompt says "Please click OpenID account provider". There are five buttons for different providers: Google, YAHOO!, AOL, myOpenID (which is highlighted with a yellow border), and OpenID. Below these buttons is a row of smaller icons for various services. At the bottom, there is a text input field labeled "Enter your MyOpenID username." and a "Sign-In" button.

# SiteMinder (with Federation) r12.5

## *federation*

- Wizard driven UI
- Authentication context
  - Set by SP
  - Enforced by IdP
- User consent
- SP side attribute mapping
- SLO/SOAP
- Delegated authentication
- JIT user provisioning

The screenshot displays the SiteMinder Administrative UI. At the top, it shows the user is logged in as 'siteminder' to 'aliro02-fmsmui.ca.com'. The navigation tabs include Infrastructure, Policies, Federation (selected), SOA, Certs & Keys, Reports, and Administration. Under Federation Management, the 'Legacy Federation' sub-tab is active, leading to the 'Entities' page.

The 'Entities' page contains a help box with instructions: 'To create a new entity, click Create Entity button. To import metadata into an entity, click Import Metadata button. To edit, duplicate, delete or export metadata into an entity, click the corresponding option under Actions button.'

Below the help box is a 'Filter Federation Entities' section with a search bar. The search criteria are set to 'Entity Id' with an equals sign and an empty text field, followed by a 'Go' button.

The main section is the 'Federation Entity List', which includes 'Create Entity' and 'Import Metadata' buttons. It shows a table of 4 entities (1-4 of 4). The table has columns for Actions, Entity Name, Entity Id, Location, Entity Type, and Partnership Count. A context menu is open over the first row, showing options: View, Edit, Duplicate, and Delete.


Actions	Entity Name	Entity Id	Location	Entity Type	Partnership Count
Action	idp01_local	idp01	Local	SAML2 IDP	1
Action	idp01_remote	idp01	Remote	SAML2 IDP	1
Action	sp01_local	sp01	Local	SAML2 SP	1
Action	sp01_remote	sp01	Remote	SAML2 SP	1

Copyright © 2008 CA. All rights reserved. The status bar at the bottom shows 'Done', 'Local intranet', and '100%' zoom.

# SiteMinder (with Federation) r12.5

## *simplifying management*

- Agent Discovery

 SiteMinder Administrative UI [Help](#)

Logged in as: **siteminder** to **loaner024.ca.com** (Logout)

[Infrastructure](#) [Federation](#) [Policies](#) [Reports](#) [Administration](#)





▼ [Agent](#) ▶ [Authentication](#) ▶ [Directory](#) ▶ [Hosts](#)

### Agent Instances

To delete agent instances, select the instances to be deleted and click the Delete Checked Instances button. To view the instance details, click the Show Details button in the desired row and select one of the information detail tabs.

**Filter**  
Search For:

**Instance List**  
Select and: [Delete Checked Instances](#) 1-2 of 2

<input type="checkbox"/> Select	▼ Host	▼ Type	▼ Subtype	▼ Version	▼ State	▼ Trusted Host	Show Details
<input type="checkbox"/>	LOANER091	WebAgent	IIS70	12.5.0000.4514		amit091	
<input type="checkbox"/>	LOANER091	WebAgent	APACHE22	12.5.0000.4514		amit091	

Copyright © 2011 CA. All rights reserved.

[About](#)

# SiteMinder (with Federation) r12.5

## *simplifying management*

- Drill in to agent instances for:
  - Associated policies
  - Associated ACO and HCO information

**SiteMinder Administrative UI** [Help](#)

Logged in as: [siteminder](#) to [loaner024.ca.com](#) (Logout)

[Infrastructure](#) [Federation](#) [Policies](#) [Reports](#) [Administration](#)

▼ [Agent](#) ▶ [Authentication](#) ▶ [Directory](#) ▶ [Hosts](#)

### Agent Instances

To delete agent instances, select the instances to be deleted and click the Delete Checked Instances button. To view the instance details, click the Show Details button in the desired row and select one of the information detail tabs.

**Filter**

Search For:

**Instance List**

Select and: [Delete Checked Instances](#) 1-2 of 2

<input type="checkbox"/> Select	▼ Host	▼ Type	▼ Subtype	▼ Version	▼ State	▼ Trusted Host	Show Details
<input type="checkbox"/>	LOANER091	WebAgent	IIS70	12.5.0000.4514		amit091	
<input type="checkbox"/>	LOANER091	WebAgent	APACHE22	12.5.0000.4514		amit091	

**Instance Details for LOANER091/WebAgent/APACHE22/12.5.0000.4514/**

[Host](#) [Instance](#) [Policy Associations](#) [Agent Associations](#)

**Policy Association Details**

Show: Names | [Resource Filters](#) 1-1 of 1

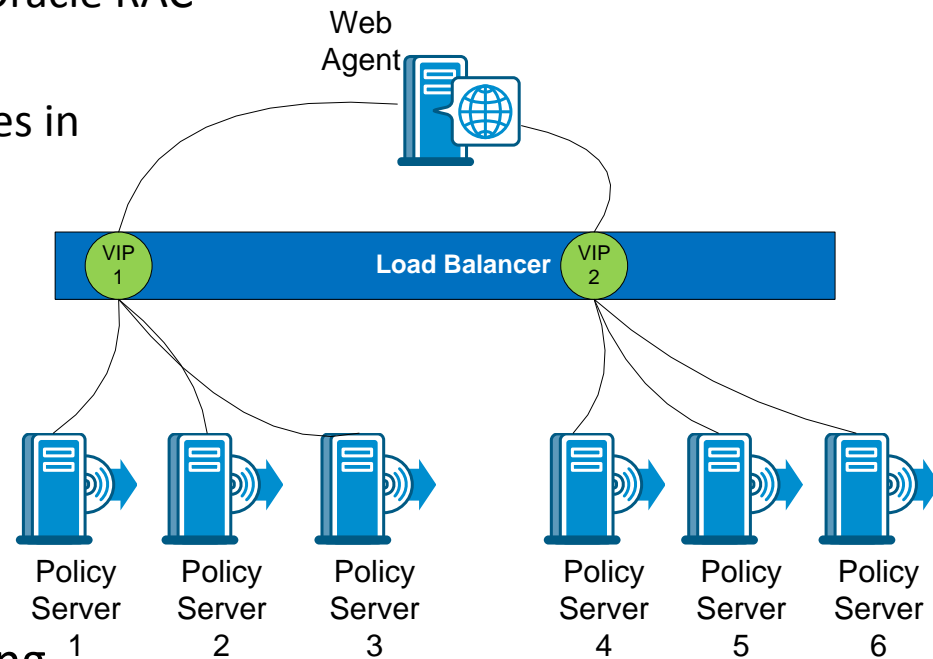
▼ Domain	▼ Policy	▼ State	▼ Realm	▼ Rule	▼ Auth Scheme	▼ Agent or Group	▼ User Dir
Test	Test		Test	Test	Basic	test	Test

Done

# SiteMinder (with Federation) r12.5

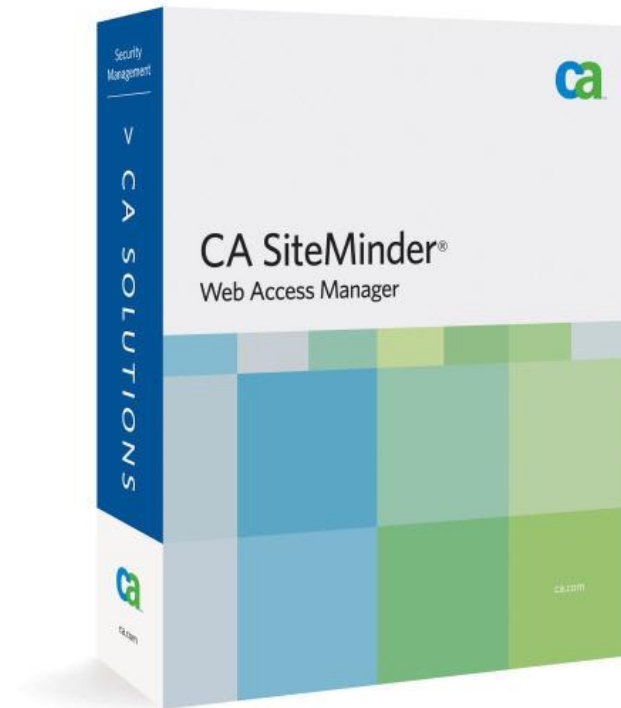
## *other enhancements*

- High performance session service based on CA Directory r12.5 (DxGrid)
  - Alternative to SQL Server replication or Oracle RAC for SiteMinder session store
  - Support for using stored session attributes in policies
- Support for hardware load balancers
- Centralized certificate and keystore
  - Shared
  - No need to stop and start
  - CRL grace period
- Expanded Options for Directory Mapping
  - Improved ability to integrate multiple repositories
- SiteMinder auth schemes to the Admin UI



# agenda

- CA Technologies Strategy
- Recent Releases
- Roadmap
  - SiteMinder 12.5
  - Looking ahead

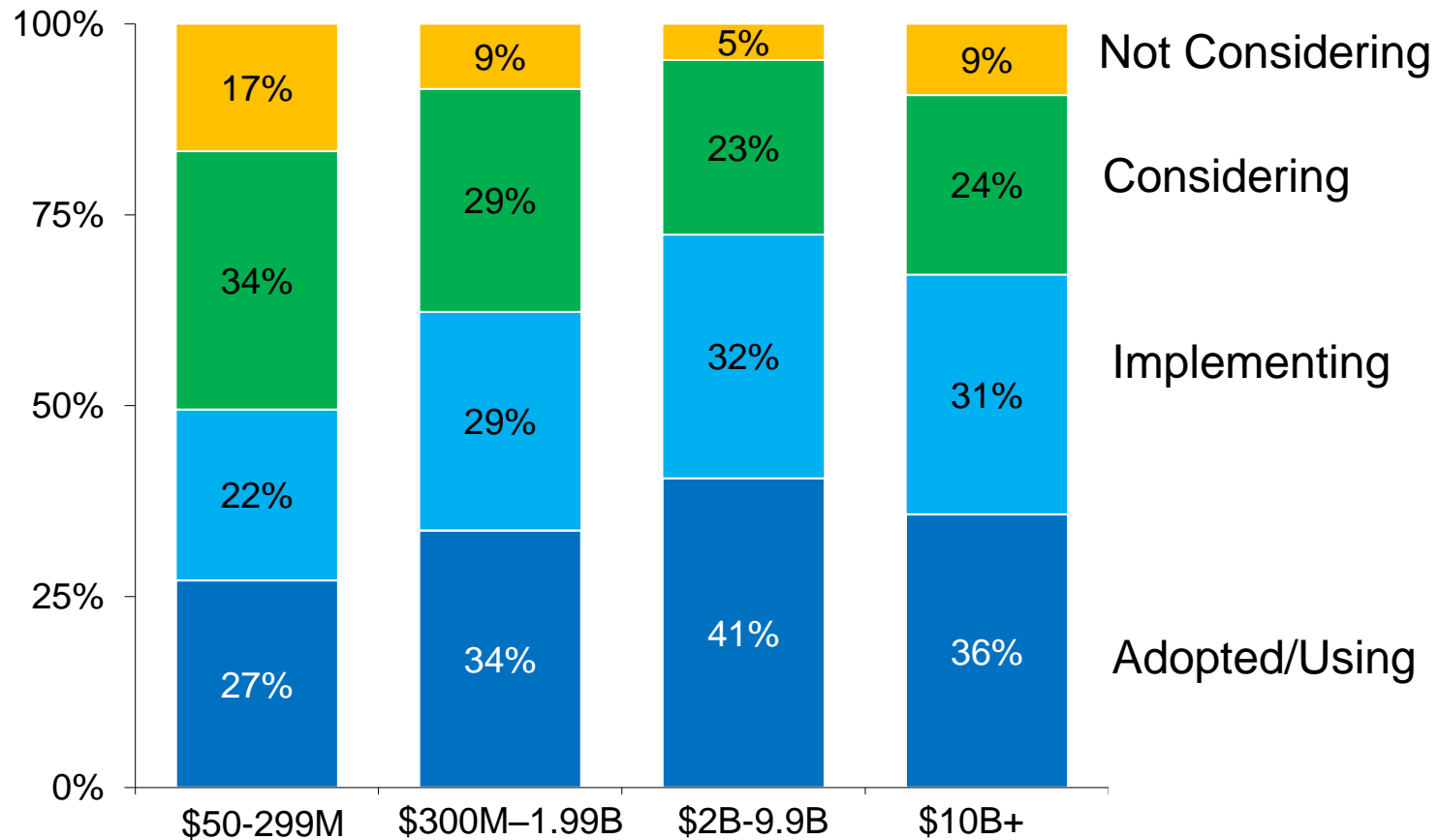


# numbers that matter

- 67%** of companies let employees get company email on their personal devices (*CIO Magazine*)
- 239%** Tablet shipment growth rate in 2011 (*IHS iSuppli, Aug, 2011*)
- 34%** of all new business software purchases will be consumed via SaaS (*Ponemon Institute, 2010*)
- 62%** Organizations that have adopted cloud services: SaaS, IaaS, or PaaS (*CA Technologies, 2011 Survey*)
- 100M** SiteMinder user performance test (*CA Technologies, 2009*  
[http://www.ca.com/~media/Files/IndustryResearch/wam-solution-hmu-test-us\\_196380.pdf](http://www.ca.com/~media/Files/IndustryResearch/wam-solution-hmu-test-us_196380.pdf))

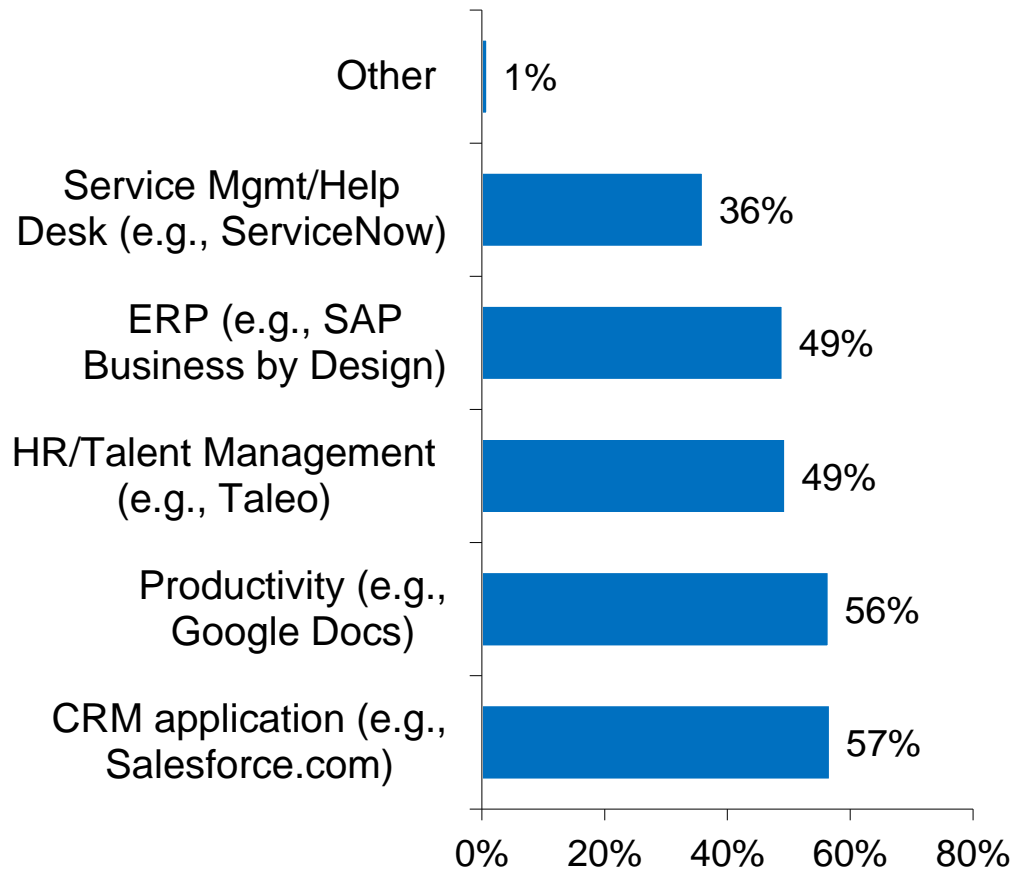


## SaaS Adoption by Organization Size



Src: CA Technologies survey (n=1369 responses, 2011)

## SaaS adoption (Applications in use or considering)



Src: CA Technologies survey (n=1232 responses, 2011)

# CA SiteMinder family

## *strategic direction*

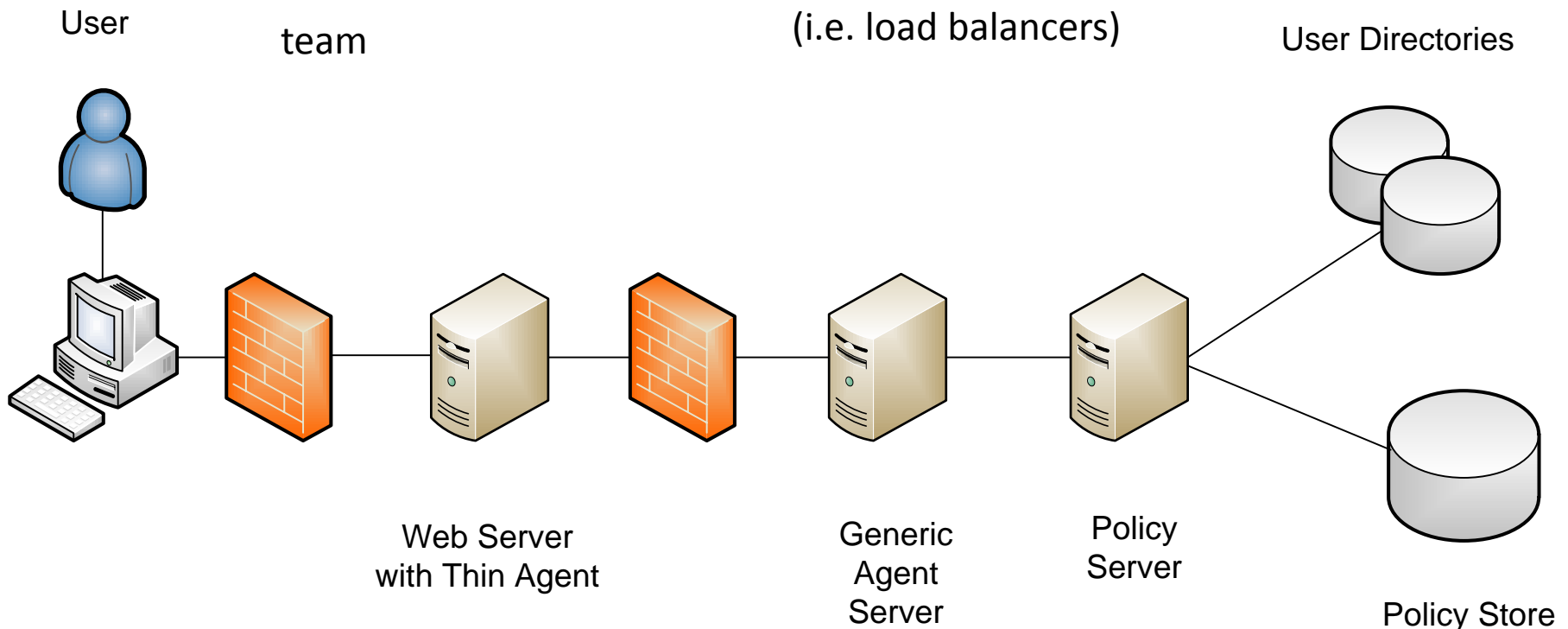
**Mission**: Enable organizations to **confidently manage access** in heterogeneous web environments **for efficiently transacting business** by delivering proven, auditable, and scalable solutions that **control access to applications and services** deployed in **on-premise or Cloud environments**

- Key component, offering in CA's CloudMinder™ offerings
  - Federation-style technologies
  - Expand support for cloud-based applications , identities, governance
- Content Aware Access control
  - Ongoing expansion of application coverage
- Mobile device support
  - Deeper integration with mobile gateway servers
  - Native Oauth 2.0 support
- Simplify management across SiteMinder, Federation, SOA Security Manager

# Generic Agent Architecture

## Goals

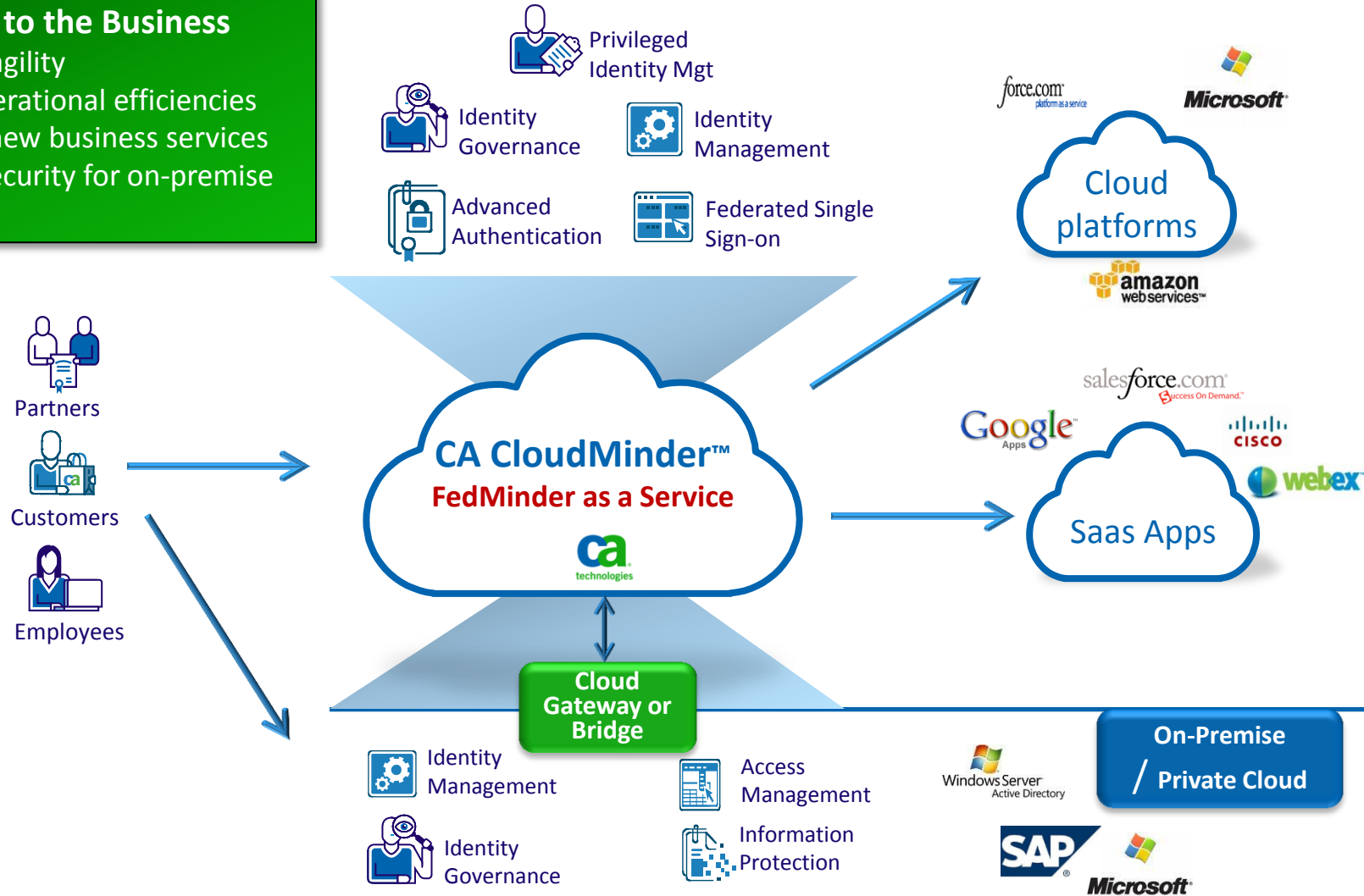
- Reduce foot print on web/application servers
- Simplify upgrades
- Provide control to SM team
- Speed time to introducing new agents
- Enable development of agents on new platforms (i.e. load balancers)



# Our strategy for cloud-connected, secure enterprise: on-premise and cloud security – *agility and choice*

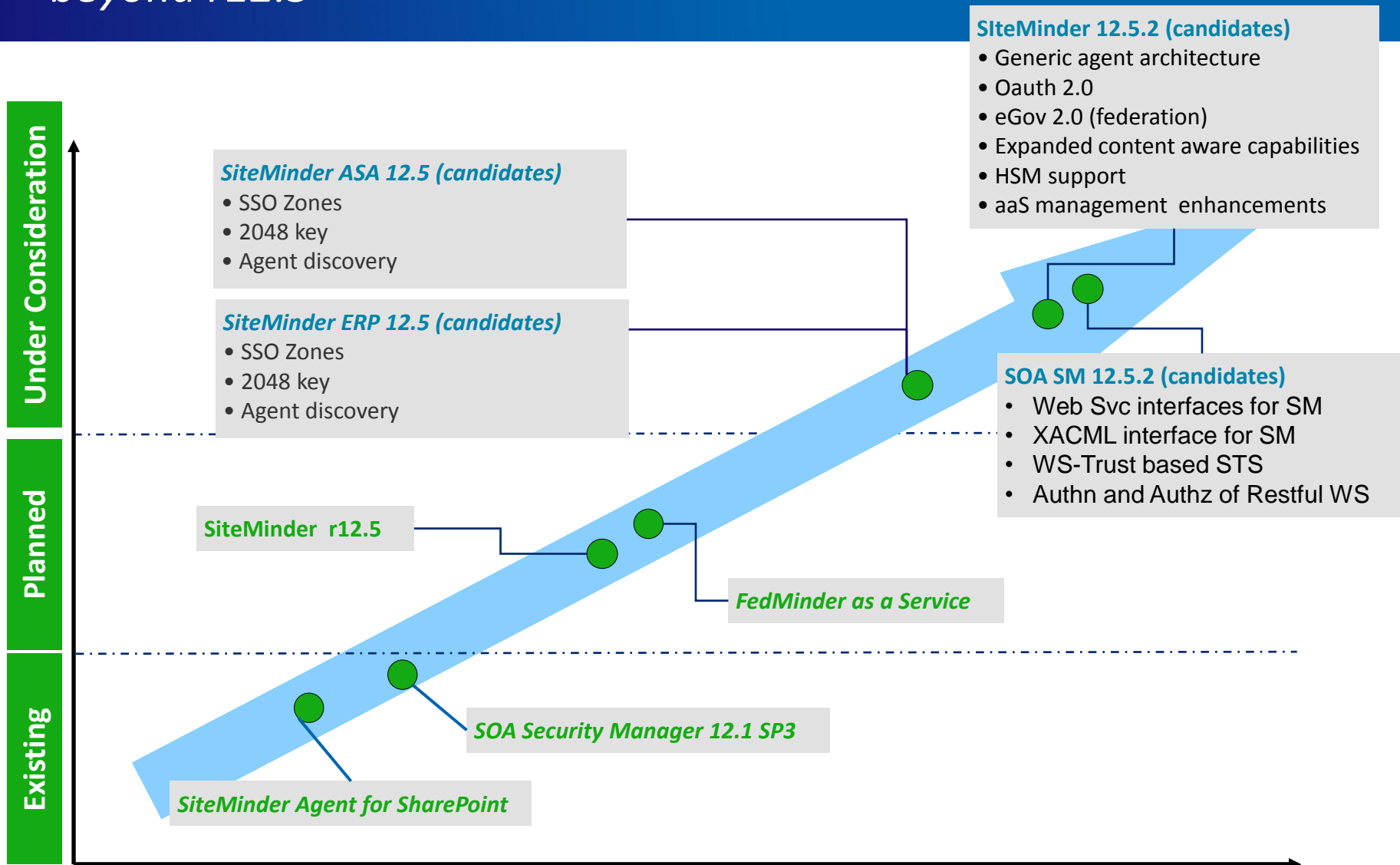
## Benefits to the Business

- Improve IT agility
- Improve operational efficiencies
- Accelerate new business services
- Improved security for on-premise or cloud



# SiteMinder product family

## beyond r12.5



# industry leaders rely on security from CA Technologies

## Identity solutions

**6** of the top 10 global banks

**4** of the top 5 global telecoms

## Access solutions

**15** of the top 20 global banks

**6** of the top 10 financial telecoms

## Information solutions

**6** of the top 15 global banks

**>100M** end-user transactions per day

# terms of this presentation

## for information purposes only

Copyright © 2011 CA Technologies. All rights reserved. All trademarks, trade names, service marks and logos referenced herein belong to their respective companies.

This document is for your informational purposes only. CA Technologies assumes no responsibility for the accuracy or completeness of the information. To the extent permitted by applicable law, CA Technologies provides this document “as is” without warranty of any kind, including, without limitation, any implied warranties of merchantability, fitness for a particular purpose, or noninfringement. In no event will CA Technologies be liable for any loss or damage, direct or indirect, from the use of this document, including, without limitation, lost profits, business interruption, goodwill or lost data, even if CA Technologies is expressly advised in advance of the possibility of such damages.



# Thank you!!!

