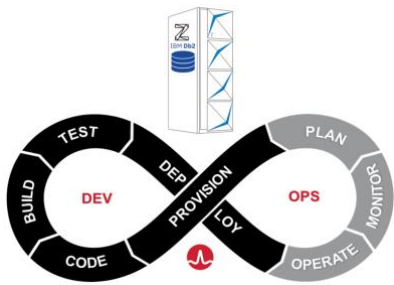


Db2 Tools New Features Summary - Fall 2020 Edition

Here's a summarized list of the enhancements we have made to Version 20.0 of the CA Database Management Solutions for Db2 for z/OS from June to September this year:

Feature Highlights

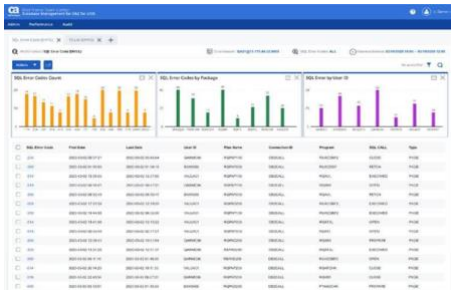
Db2 in MF DevOps : Enabling Db2 Schema Provisioning



As organizations do shift-level testing, automating database schema changes in CI/CD pipeline helps the highly skilled database administrators to focus on more valuable activities.

A new set of JCL templates, sample JCL, and a new PROC are available in **CA RC/Migrator** and **CA RC/Compare** for use as building blocks in a CI/CD pipeline to improve time to market while retaining database administrator control over changes.

Modernization: MTC-DBM enhancements



Digital transformation drives the need to open access to your mainframe systems to a new generation of users. With the enhanced **Mainframe Team Center - Database Management for Db2 for z/OS (MTC-DBM)** graphical user interface, you can visualize application performance data in an easy to read chart format by SQL code, package, and authID. You can also export Db2 object information or application performance data in comma-separated values (CSV) format to share with others or for offline analysis.

Zowe Conformant APIs for CA Database Management Solutions for Db2 for z/OS



The **Database Management Data Service (DBM Data Service)** REST API for the CA Database Management Solutions for DB2 for z/OS has earned Zowe Conformant status with the Zowe API Mediation Layer. The Zowe Conformance Program gives users confidence that when they use a product, application, or distribution that leverages Zowe, they can expect a high level of common functionality, interoperability, and user experience. The Zowe API Mediation Layer consolidates mainframe RESTful API services into a single, secure point of access.

Other Features

- The **post-installation tailoring** process now lets you identify remote DBMS systems that support Distributed Relational Database Architecture (DRDA) protocol. **CA Fast Unload** also now supports unloading from remote Db2 (LUW) RDBMs using DRDA protocol. DRDA supports seamless integration of distributed relational DBMS systems.
- Support for Db2 function level V12R1M507.
- Capture Threshold Values (CTV) of objects selected by Real Time Object Selection (RTOS) in **CA Database Analyzer**. You can use the generated report to fine tune your object selection criteria and reduce the time it takes to perform maintenance.
- Huffman compression support in **CA Database Analyzer, CA Fast Load, CA Fast Recover, CA Fast Unload, CA Log Analyzer, and CA Rapid Reorg** to recognize Huffman encoded objects and continue processing as applicable.
- **CA Fast Load** enhancements:
 - zIIP support when you specify OUTPUT-CONTROL BUILD with ZIIP YES in the SYSIN DD statement or PFL-ZIIP UTIL parmlib option. This enhancement reduces processing loads on your general CPUs.
 - Enhanced support for TEMPLATE statements to allocate SYSULD data sets dynamically with static JCL DD statements.
- **CA Fast Unload** also provides enhanced support for TEMPLATE statements to allocate data sets dynamically with static JCL DD statements. You can take advantage of a z/OS UNIX System Services (USS) pipe for improved performance.
- **CA Fast Recover** can now use flash copies and concurrent copies with the recovery simulation feature. Recovery simulation helps you prove that you can recover a Db2 object to a specific point-in-time, how long it will take to do so, without affecting the existing production environment. This feature is enabled using the new PREVIEW SIMULATE keywords in your RECOVER JCL.
- **CA RC/Migrator, CA RC/Compare, and CA RC/Update** enhancements:
 - ALTER support for PAGENUM RELATIVE on Db2 12 subsystems for partition-by-range tablespaces using relative page numbering (PBR2 tablespaces). Relative page numbering provides more flexibility and availability, and higher limits in partition growth.
 - GENERATED ALWAYS non-deterministic expression column support when migrating, altering, and comparing tables.
- **CA SYSVIEW for DB2** enhancements:
 - Support for the CICS Transaction Server (CTS) 5.6
 - Support for new system parameters (STATIME_MAIN, DISALLOW_SSARAUTH, and UTILS_BLOCK_FOR_CDC) in reports.
 - Support for new options with the QUERY_ACCEL and INDEX_MEMORY_CONTROL system parameters.

- o Support for a new system parameter, ZDM-PREFIX, which lets you uniquely identify the CA SYSVIEW for DB2 data collector in CA Mainframe Operational Intelligence.
- o Support for new Db2 IFCID changes, MOI instance identifier, new Db2 insert algorithm (IAG2) fields, new RID list fields, asynchronous cross-invalidation fields support, and updated tutorials for real-time and history online reports.
- o Support for new trace records for Db2 accelerator version 7.

For more information about these enhancements, see [New Features](#) in the Release Notes.

What's cooking in the lab?

Join the **CA Db2 Tools 20.0 Validation Project**, where the Broadcom labs reveal upcoming features and seek users' feedback. You will see what we are developing as we develop it. Validation meetings are your best opportunity to influence the development of the CA Database Management Solutions for Db2 for z/OS products.

Register today at <https://validate.broadcom.com/key/db2tools200>