



SV Community Edition

Surya Suravarapu

January 2018

Agenda

SERVICE VIRTUALIZATION

WHAT IS SERVICE VIRTUALIZATION COMMUNITY EDITION?

WHY SERVICE VIRTUALIZATION COMMUNITY EDITION?

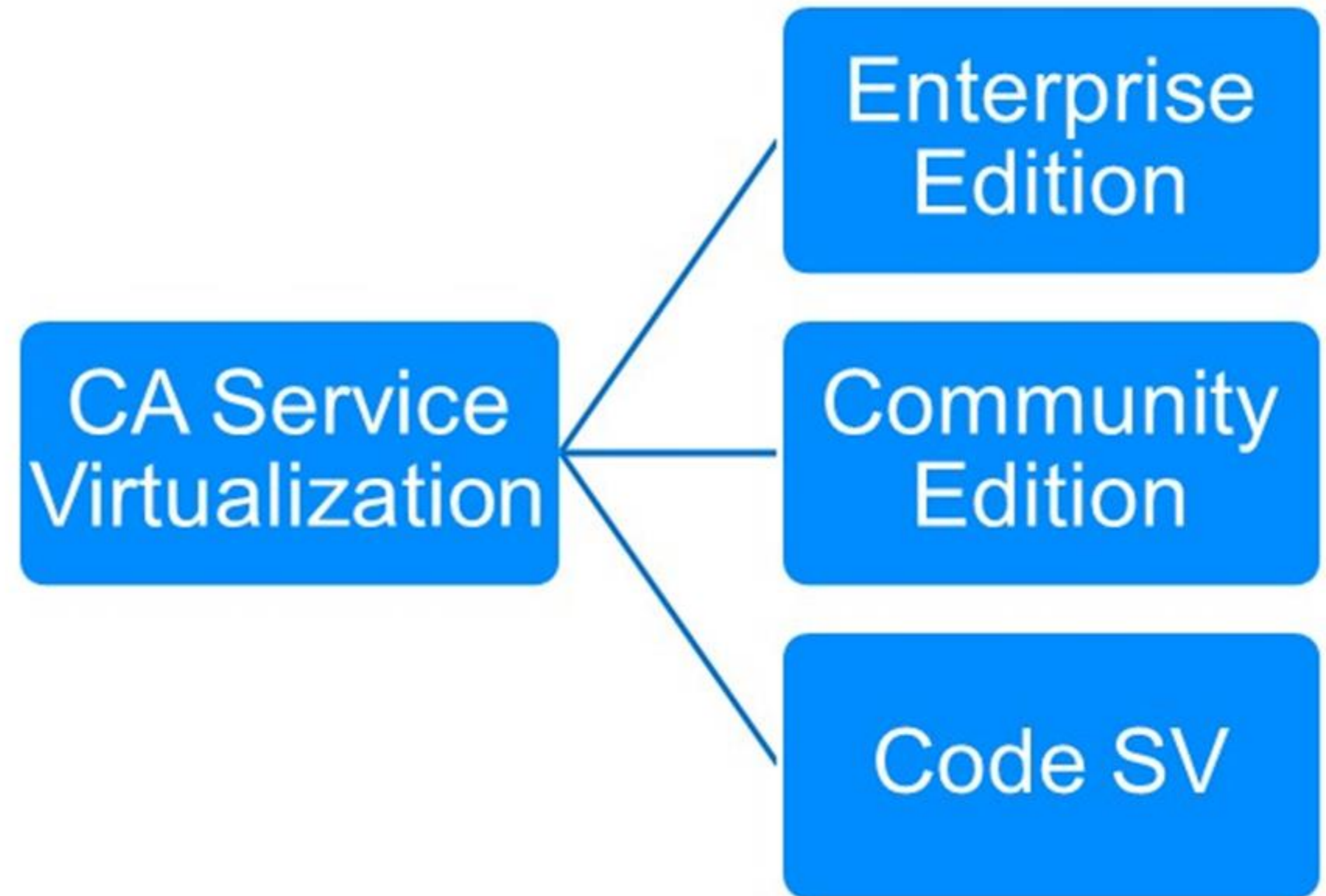
KEY FEATURES

DOWNLOAD AND OTHER RESOURCES

DEMO

Service Virtualization

- Simulates behavior
 - unavailable or constrained systems
- Accelerate application development
- Improve quality
- Reduce costs and risks.



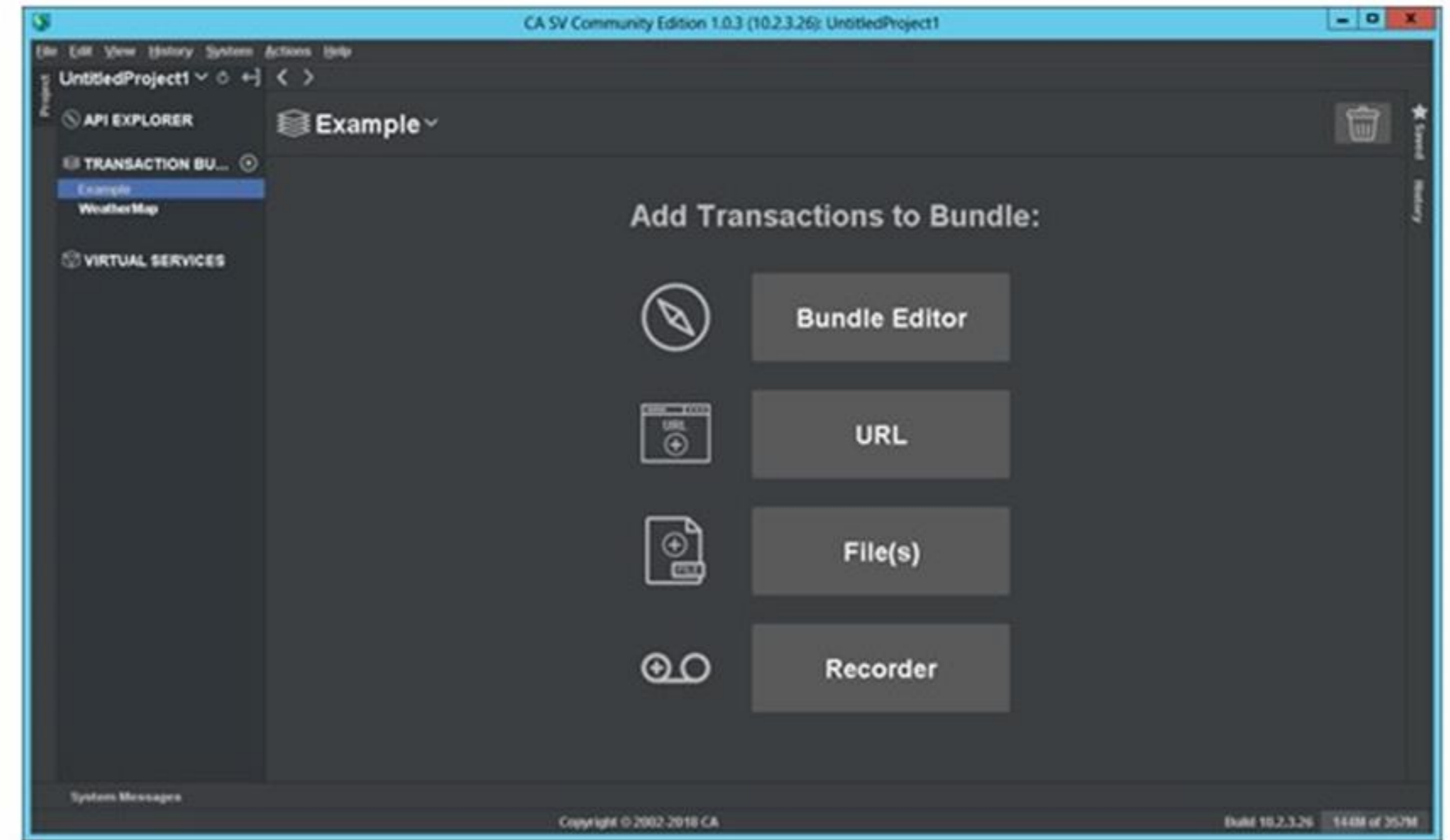
What is Service Virtualization Community Edition?

- Personal Edition of CA Service Virtualization
- Optimized for HTTP / HTTPS services
- Protocol supported
 - REST, SOAP, JSON and XML
- Quick and Easy



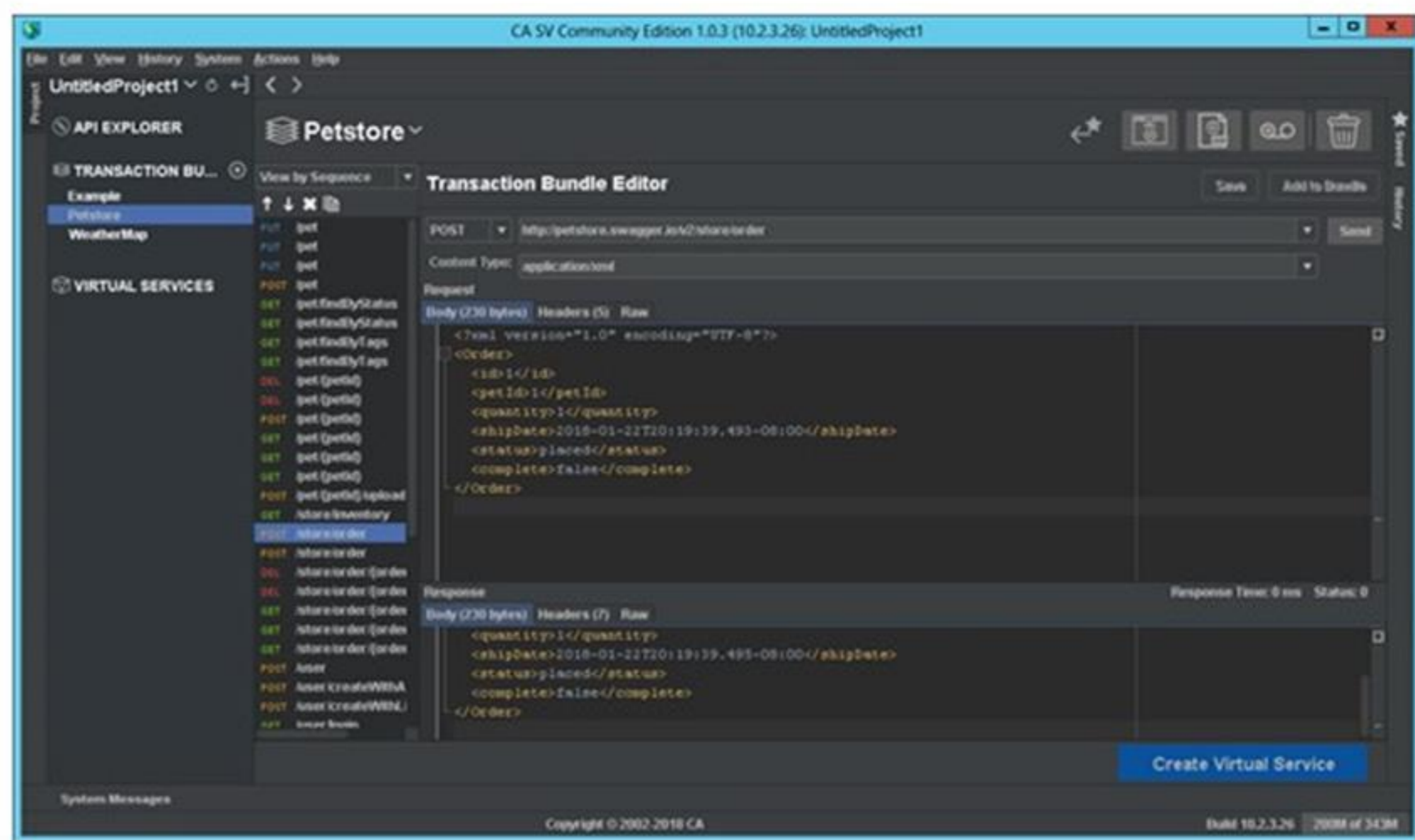
Why Service Virtualization Community Edition?

- **Community Edition**
 - Intuitive and simple screens
 - Self contained – independent of external components
 - Simple installer
 - Support for common use cases – HTTP based
 - Suitable for developers and beginners



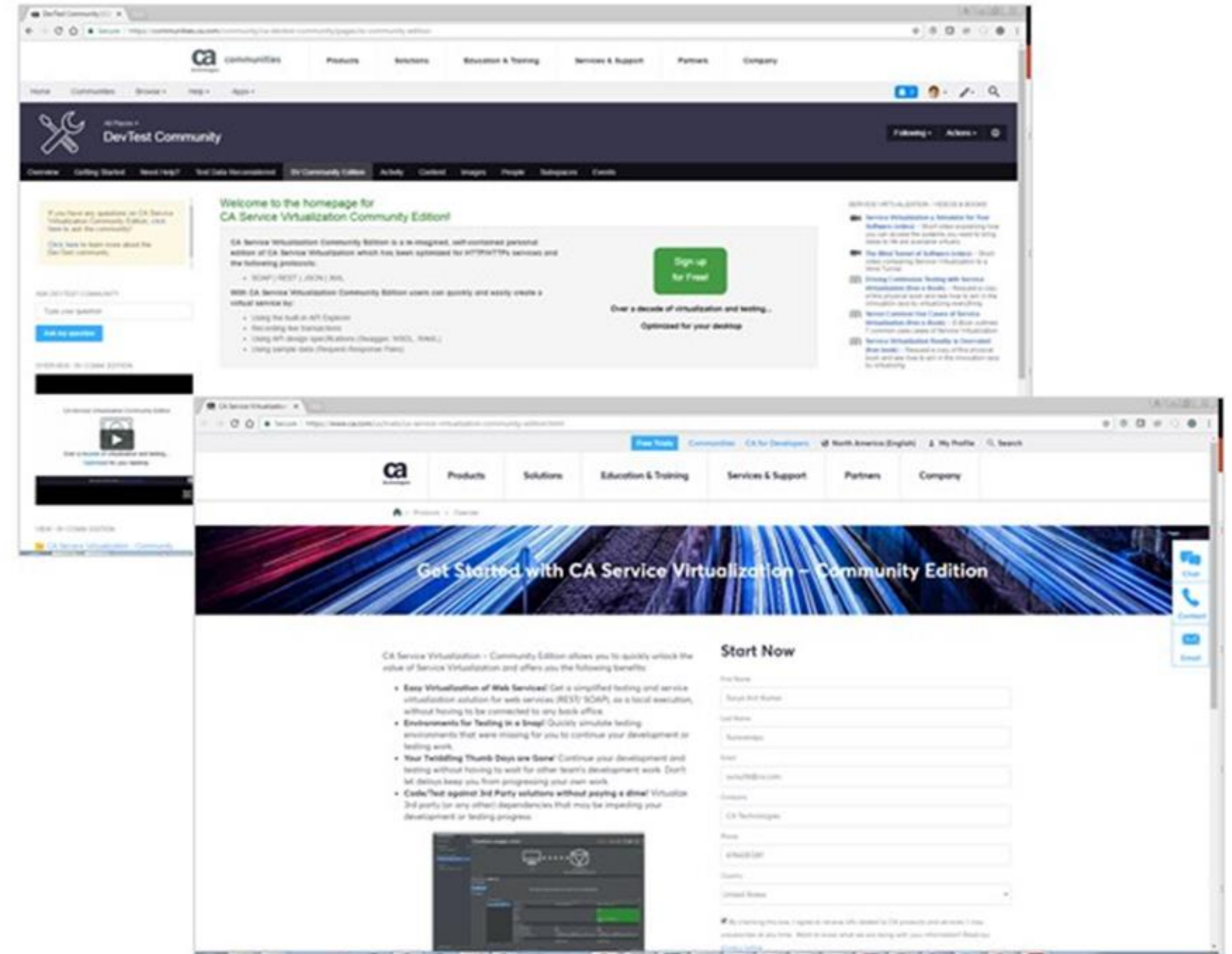
Key Features

- **API Explorer**
 - Interface for invoking REST APIs and SOAP services
- **Service Virtualization**
 - From Swagger or WSDL
 - By Recording
 - From Request / Response
 - Service Image Editor
 - Transaction Inspector



Download and other resources

- Download the software
 - <http://cainc.to/CASVCE>
- Documentation
 - <http://cainc.to/CASVCE-Docs>
- Browse Communities
 - <http://cainc.to/CASVCE-Support>




Demo



Surya Suravarapu

Sr. Engineering Services Architect

SuryaAnilKumar.Suravarapu@ca.com

 [@suravarapu](https://twitter.com/suravarapu)

 slideshare.net/CAinc

 linkedin.com/in/surya-suravarapu