

MAINFRAME AND WORKLOAD AUTOMATION

Vision & Strategy Next-Gen Workload Automation

Mark Warren – Sr. Director Product Management - CA Technologies

For Informational Purposes Only

Terms of this Presentation

© 2016 CA. All rights reserved. All trademarks referenced herein belong to their respective companies. The presentation provided at CA World 2016 is intended for information purposes only and does not form any type of warranty. Some of the specific slides with customer references relate to customer's specific use and experience of CA products and solutions so actual results may vary.

Certain information in this presentation may outline CA's general product direction. This presentation shall not serve to (i) affect the rights and/or obligations of CA or its licensees under any existing or future license agreement or services agreement relating to any CA software product; or (ii) amend any product documentation or specifications for any CA software product. This presentation is based on current information and resource allocations as of November 1, 2016, and is subject to change or withdrawal by CA at any time without notice. The development, release and timing of any features or functionality described in this presentation remain at CA's sole discretion.

Notwithstanding anything in this presentation to the contrary, upon the general availability of any future CA product release referenced in this presentation, CA may make such release available to new licensees in the form of a regularly scheduled major product release. Such release may be made available to licensees of the product who are active subscribers to CA maintenance and support, on a when and if-available basis. The information in this presentation is not deemed to be incorporated into any contract.

Agenda

1 MISSION ESSENTIAL TO APPLICATION ECONOMY

2 ENABLERS FOR THE APPLICATION ECONOMY

3 CA CONVERSION SERVICE

4 NEXT-GEN CA WORKLOAD AUTOMATION

5 Q & A



Customers Demand More

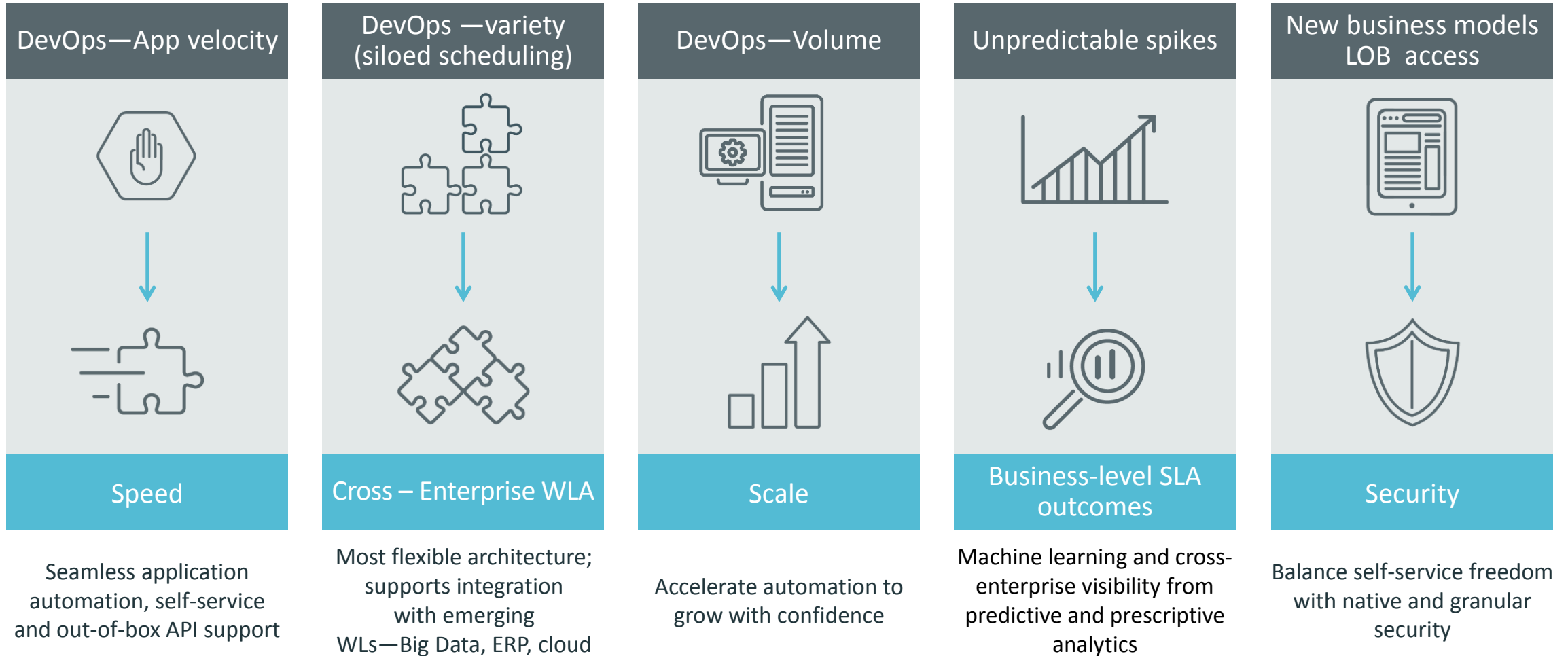


Expectations of
application performance

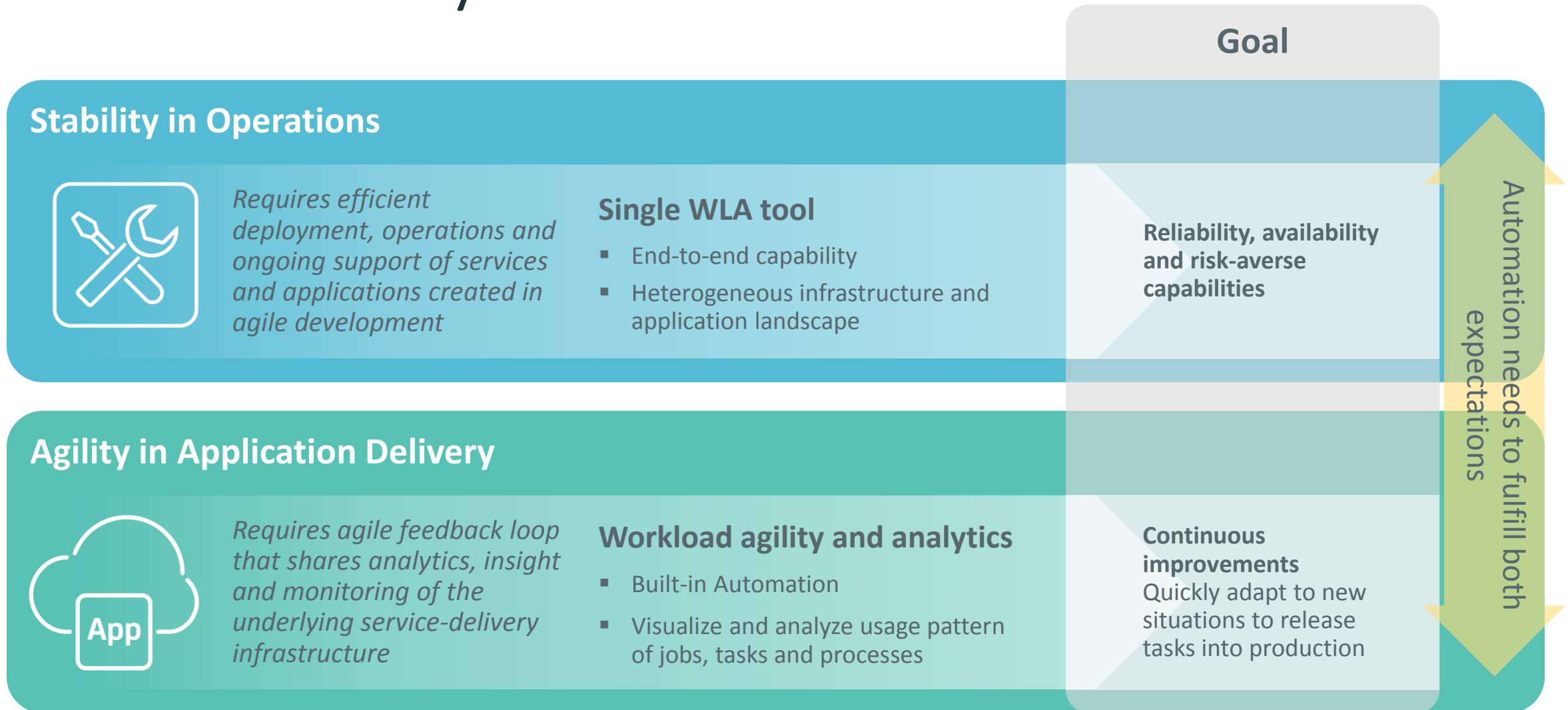


LOB demands and speed

CA Workload Automation: Critical for Delivering Mission-Essential Services in the App Economy



Next-Gen CA WLA Will Have to Balance Speed With Consistency



Essential Enablers for the Application Economy

Business Economics

- Software Consolidation
- Emerging Technologies
- Mainframe Platform Exploitation

Rapid Adoption

- Simplify and Modernize
- Predictive Analytics
- Rapid Deployment
- Managed Services

Business Agility

- Agile App Delivery
- Self-service Management
- Application Integration
- Cloud and Container Automation

Security and Compliance

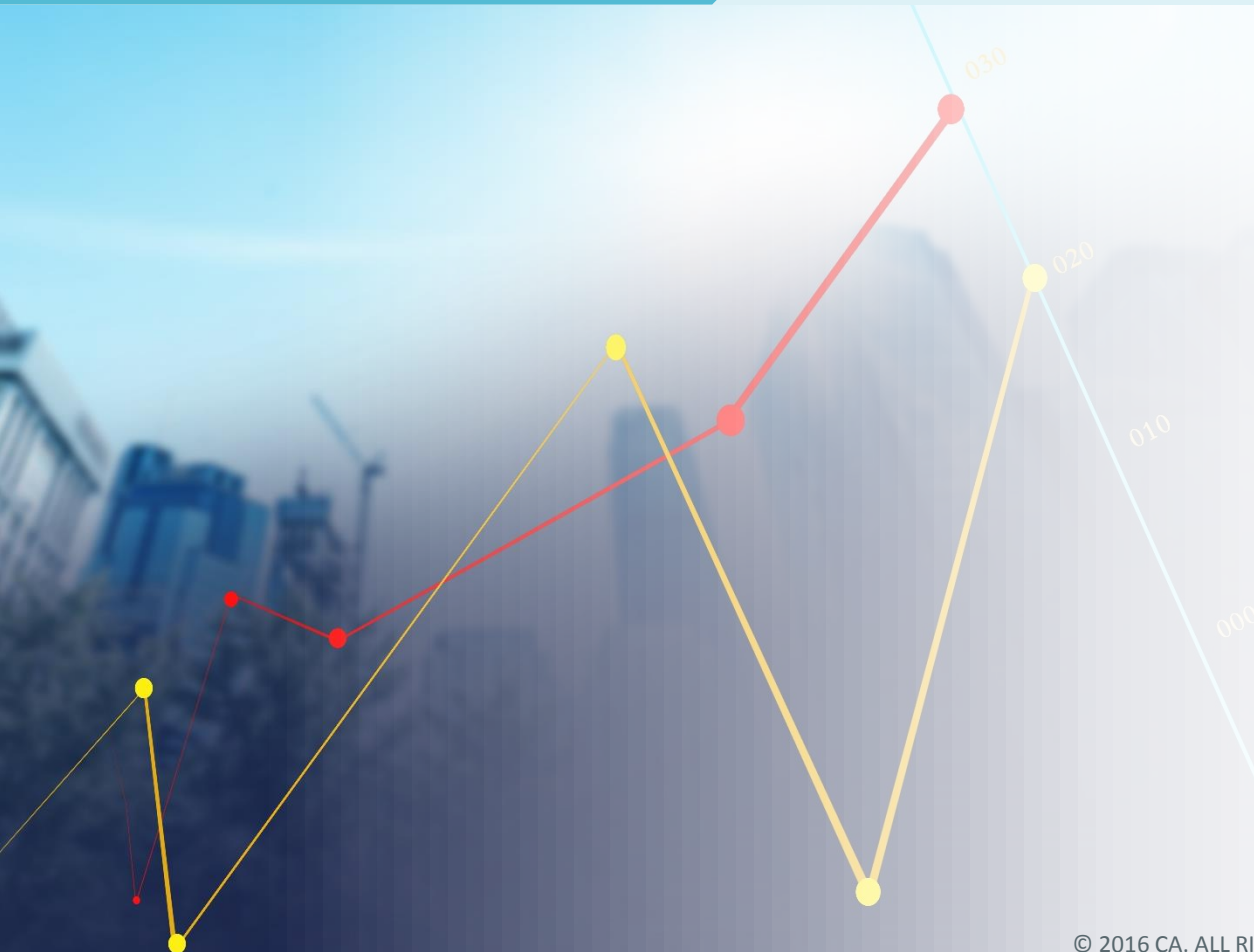
- Data Security
- Advanced Authentication
- Audit and Authorizations



Business Economics

ROI

Do More with Less



Focus areas:

- CA Conversion Service
- Platform agnostic automation
- Specialty Processors & HA

Rapid Adoption

SIMPLE

Fast Deployment and Modernized User Experience



Focus areas:

- Browser and Mobile interfaces
- Advanced Analytics
- Effortless upgrades and rollouts
- Automation with managed services

Business Agility

SPEED

Accelerate Application Automation



Focus areas:

- API-first automation
- Secure Self-service
- Flexible Application Integrations
- Cloud and Container workloads

Security and Compliance

SAFE

Increase self-service with data and user security

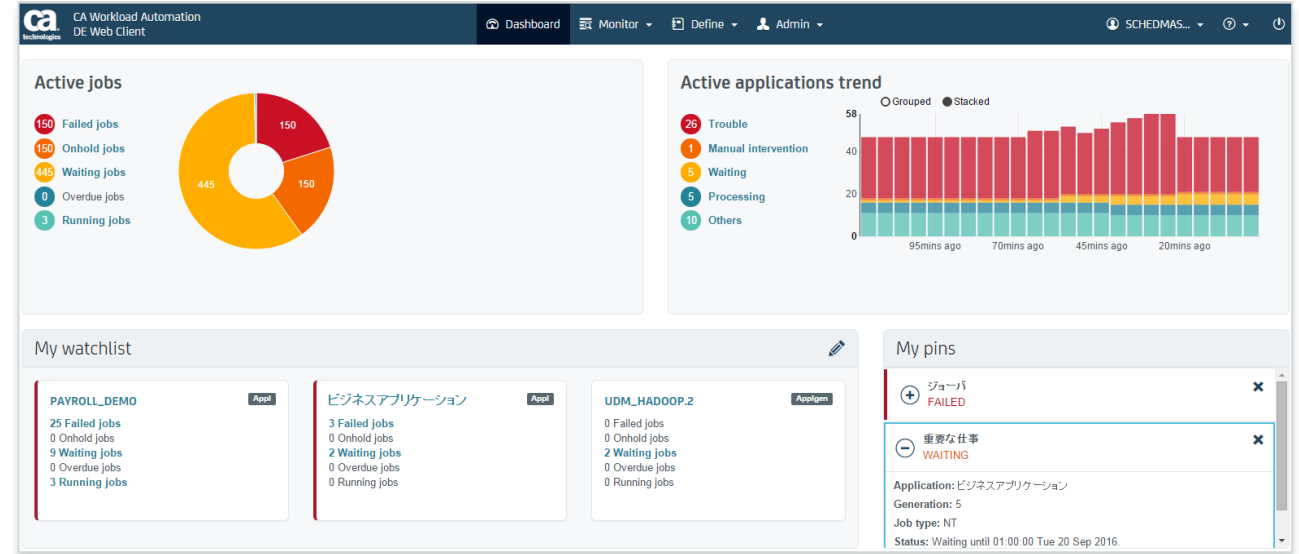


Focus areas:

- Data access and movement
- Multi-factor and SAML
- User authorizations and audit

Next-Gen Workload Automation- Modernized User Experience

- Light weight, browser based UI with tablet support
- Business, Persona focused experience
- Support Internalization and Localization
- Centralized management for Mainframe & distributed workloads

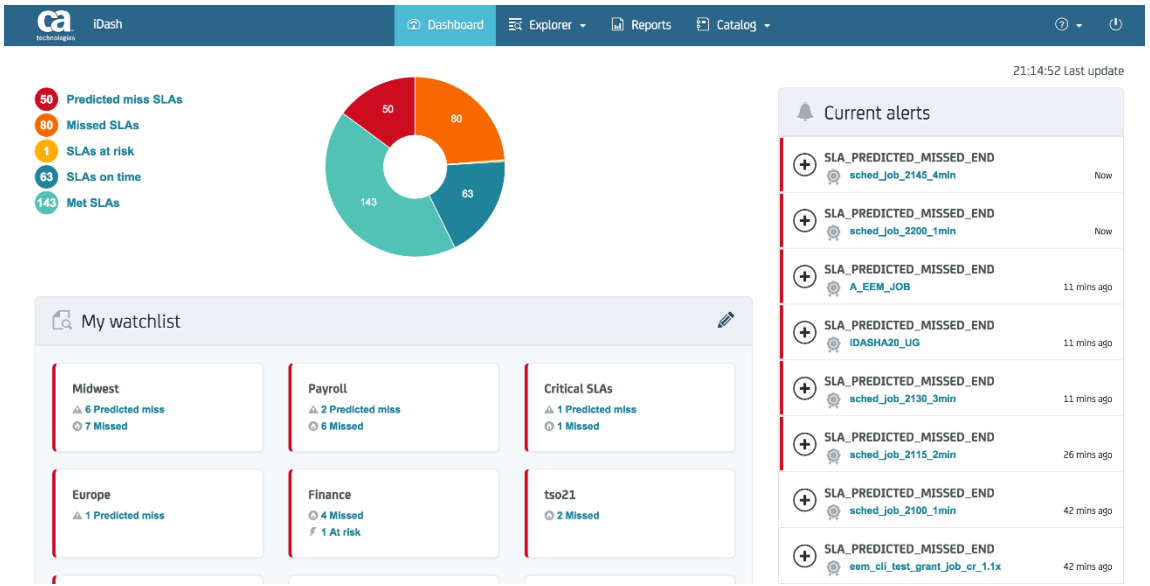


The screenshot shows the 'Monitor Applications' page. At the top, there are five colored boxes representing the count of applications in different states: 16 Trouble (red), 9 Manual Intervention (orange), 6 Waiting (yellow), 0 Processing (green), and 2 Others (blue). Below these is a search bar and a table titled 'Application List'.

State	Application	Generation	Total Jobs	% Completion	Start Time	End Time	Event	Trigger
APPLHOLD	TESTOMTEXTL...	2	2	0			SCHEDMASTER.T...	
APPLHOLD	TEXTFILEAPP1	3	4	0			SCHEDMASTER.T...	
MANUAL_INTERV...	RETRIEVE_SPOO...	3	5	80	"12:42:28 Fri 3 Ju...		SCHEDMASTER....	MANUAL
MANUAL_INTERV...	SUBAPP_CRIT	4	5	60	"12:52:29 Mon 6 J...		SCHEDMASTER....	MANUAL
MANUAL_INTERV...	SUBAPP_CRIT	3	5	80	"12:48:30 Mon 6 J...		SCHEDMASTER....	MANUAL
MANUAL_INTERV...	SUBAPP_CRIT	2	5	80	"12:47:26 Mon 6 J...		SCHEDMASTER....	MANUAL
MANUAL_INTERV...	SUBAPP_CRIT	1	5	80	"12:31:07 Mon 6 J...		SCHEDMASTER....	
MANUAL_INTERV...	TEST_REALTIME	53	13	0	"13:17:21 Fri 3 Ju...		SCHEDMASTER.T...	
MANUAL_INTERV...	TEST_REALTIME	51	11	0	"13:07:48 Fri 3 Ju...		SCHEDMASTER.T...	
MANUAL_INTERV...	TEST_REALTIME	50	11	0	"13:05:52 Fri 3 Ju...		SCHEDMASTER.T...	
MANUAL_INTERV...	TEST_REALTIME	49	11	0	"11:55:19 Fri 3 Ju...		SCHEDMASTER.T...	
TROUBLE	AUTO_JOB_RU...	38	27	30	"19:47:16 Wed 1 J...		SCHEDMASTER....	MANUAL
TROUBLE	AUTO_JOB_RUN...	37	18	22	"19:44:27 Wed 1 J...		SCHEDMASTER....	MANUAL
TROUBLE	CRITICAL_UI	3	6	17	"12:18:58 Mon 6 J...		SCHEDMASTER....	
TROUBLE	CRITICAL_UI	2	6	17	"12:16:45 Mon 6 J...		SCHEDMASTER....	MANUAL

Next-Gen Workload Automation – Advanced Analytics

Use Case & Solution Concept

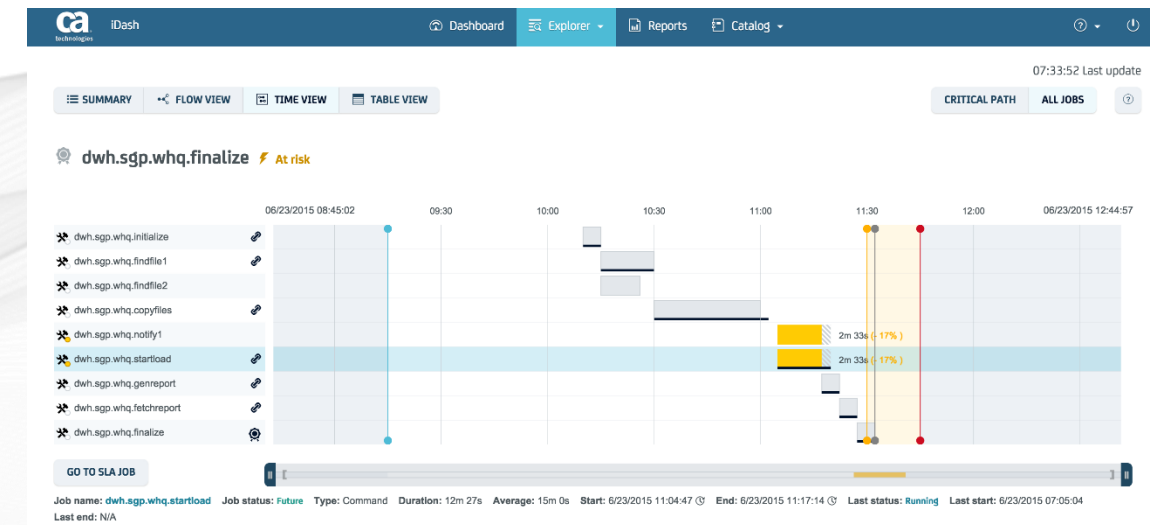


PROBLEM

- “Need to know if any of our critical business processes are going to miss their SLAs”
- “What can we do to prevent breaching of SLAs?”

SOLUTION

- Analyze real-time workload information
- Track and escalate prioritized issues
- Correlate metrics via machine learning
- Decision support for rapid triage and impact analysis
- Automate customized analysis and recovery actions
- Offer historical analytics for audit, optimization



Next-Gen Workload Automation – DevOps, Emerging Application Architecture

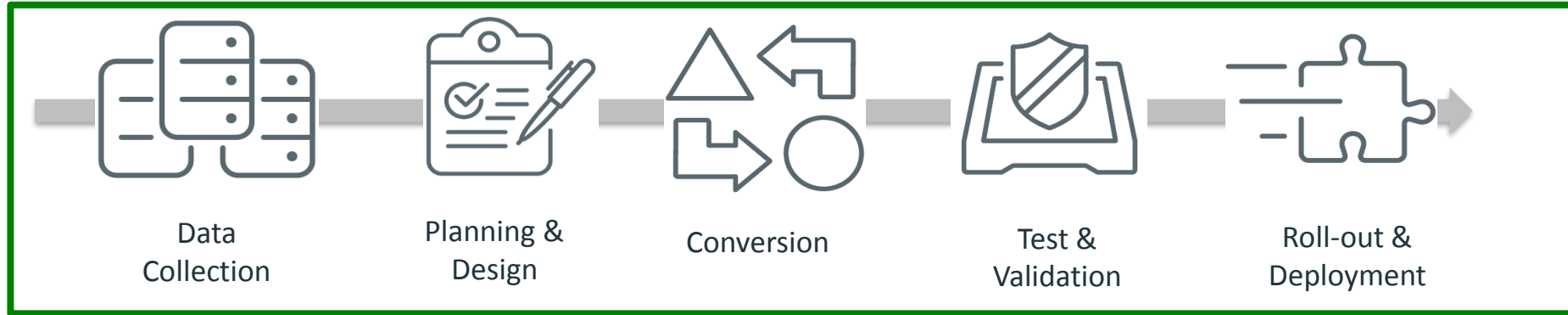
Cloud & Container Orchestration

- Container-friendly, cloud orchestrator
- API-based communication
- Support dynamic provisioning for on-demand workloads
- End-point monitoring and control
- Automated triggering based on container, cloud machine provisioning
- Support variety of container managers, cloud providers
- Metering, resource monitoring and analytics



Orchestrate
bi-modal workloads
from single solution

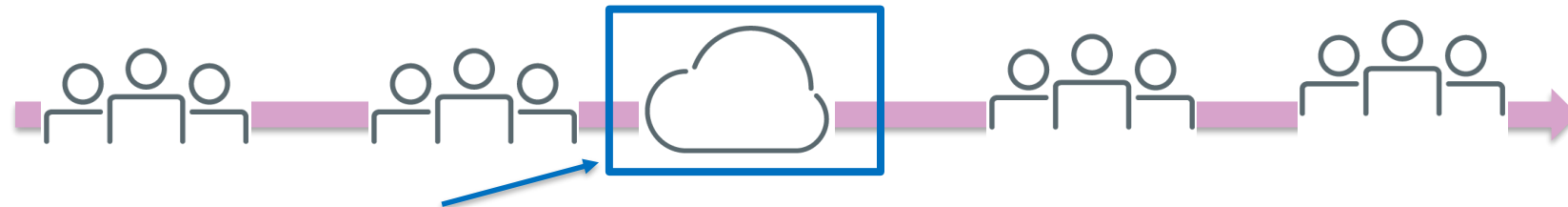
How it Works - CA Conversion Service Is Different



CA provides the entire lifecycle process in a conversion, ensuring a faster ROI



CA Conversion Service is cloud-based and guided for the entire migration



Competitive Solutions only automate the conversion step and rest is manual

Trends and Factors



Business Economics

IT Buyer Priority: Simplify management and reduce cost of operations

“What is the most important drivers and requirements shaping your org’s overall IT strategy from today through 2020?”

#3 answer: Create more standardized IT environments



Easy Adoption

Hybrid multi-cloud, mobile, and IoT will drive demand for a new generation of unified management solutions. Real time end user, and end to end application performance analytics, and IT operations analytics will drive optimization.



Business Agility

“What is the most important drivers and requirements shaping your org’s overall IT strategy from today through 2020?”

#1 answer: increase business agility



Security & Compliance

Governance, policies and controls must support old and new roles and resources.

What is the most important drivers and requirements shaping your org’s overall IT strategy from today through 2020?”

#2 answer: Maintain/Improve security and compliance



Source: IDC, July, 2016 - Market Analysis Perspective: *Enterprise System Management Software 2016*; Doc #US40938816

Source: IDC, July, 2016 - Enterprise Cloud and DevOps Management **Survey**, n=200 IT and DevOps decision makers



Questions?

Thank you.

Stay connected at communities.ca.com