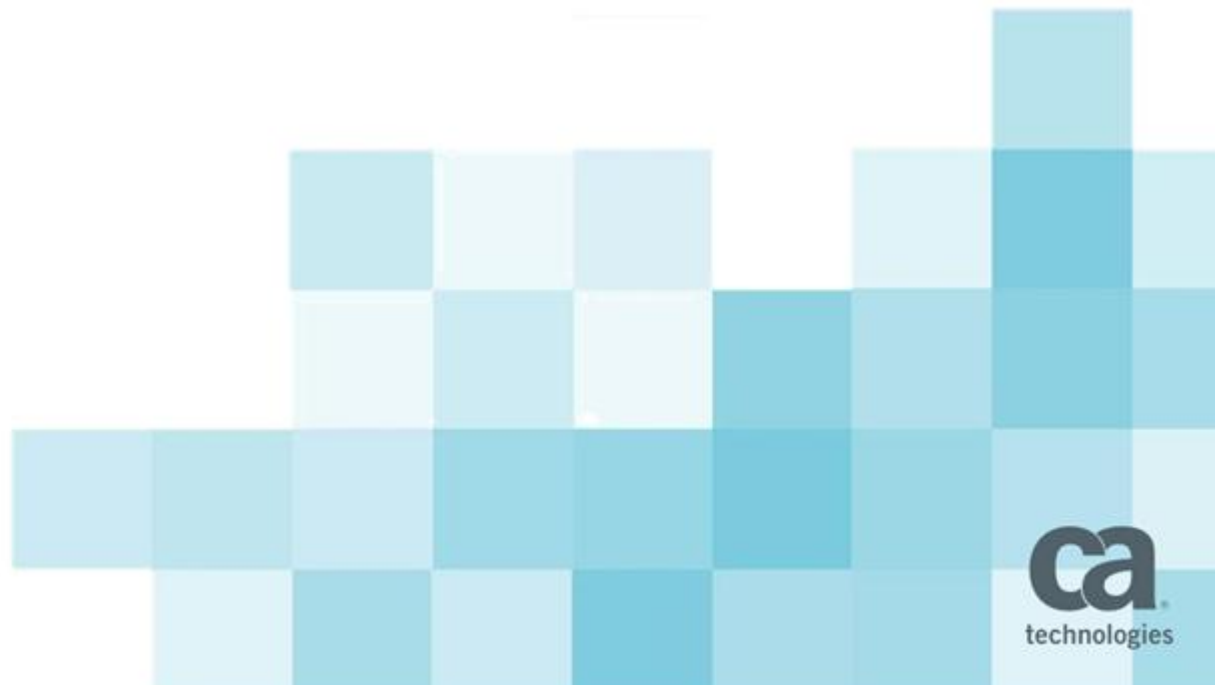


CA Gen 8.5 Toolset Ease of Use Enhancements

Madhuri Mettu, Senior Software Engineer

July 2014



For Informational Purposes Only

terms of this presentation

Copyright © 2014 CA. All rights reserved.

This presentation was based on current information and resource allocations as of July 2014 and is subject to change or withdrawal by CA at any time without notice. Notwithstanding anything in this presentation to the contrary, this presentation shall not serve to (i) affect the rights and/or obligations of CA or its licensees under any existing or future written license agreement or services agreement relating to any CA software product; or (ii) amend any product documentation or specifications for any CA software product.

The development, release and timing of any features or functionality described in this presentation remain at CA's sole discretion. Notwithstanding anything in this presentation to the contrary, upon the general availability of any future CA product release referenced in this presentation, CA will make such release available (i) for sale to new licensees of such product; and (ii) to existing licensees of such product on a when and if-available basis as part of CA maintenance and support, and in the form of a regularly scheduled major product release. Such releases may be made available to current licensees of such product who are current subscribers to CA maintenance and support on a when and if-available basis. In the event of a conflict between the terms of this paragraph and any other information contained in this presentation, the terms of this paragraph shall govern.

Certain information in this presentation may outline CA's general product direction. All information in this presentation is for your informational purposes only and may not be incorporated into any contract. CA assumes no responsibility for the accuracy or completeness of the information. To the extent permitted by applicable law, CA provides this presentation "as is" without warranty of any kind, including without limitation, any implied warranties or merchantability, fitness for a particular purpose, or non-infringement. In no event will CA be liable for any loss or damage, direct or indirect, from the use of this document, including, without limitation, lost profits, lost investment, business interruption, goodwill, or lost data, even if CA is expressly advised in advance of the possibility of such damages. CA confidential and proprietary. No unauthorized copying or distribution permitted.

AGENDA

- Allow creation of a new action diagram from the action diagram selection list
- Default Import entity view optionality is set to mandatory
- Set default deletion rule when adding a relationship
- Fix highlighting after sort on the Navigation Diagram Open Window dialog
- Pass selected items on Windows to plug-in applications
- Partitioning indicated for Data Structure and Data Store List Diagrams
- Fix window sort when a dialect is displayed
- View matching dialogs displayed only when necessary

Allow creation of a new action diagram from the action diagram selection list

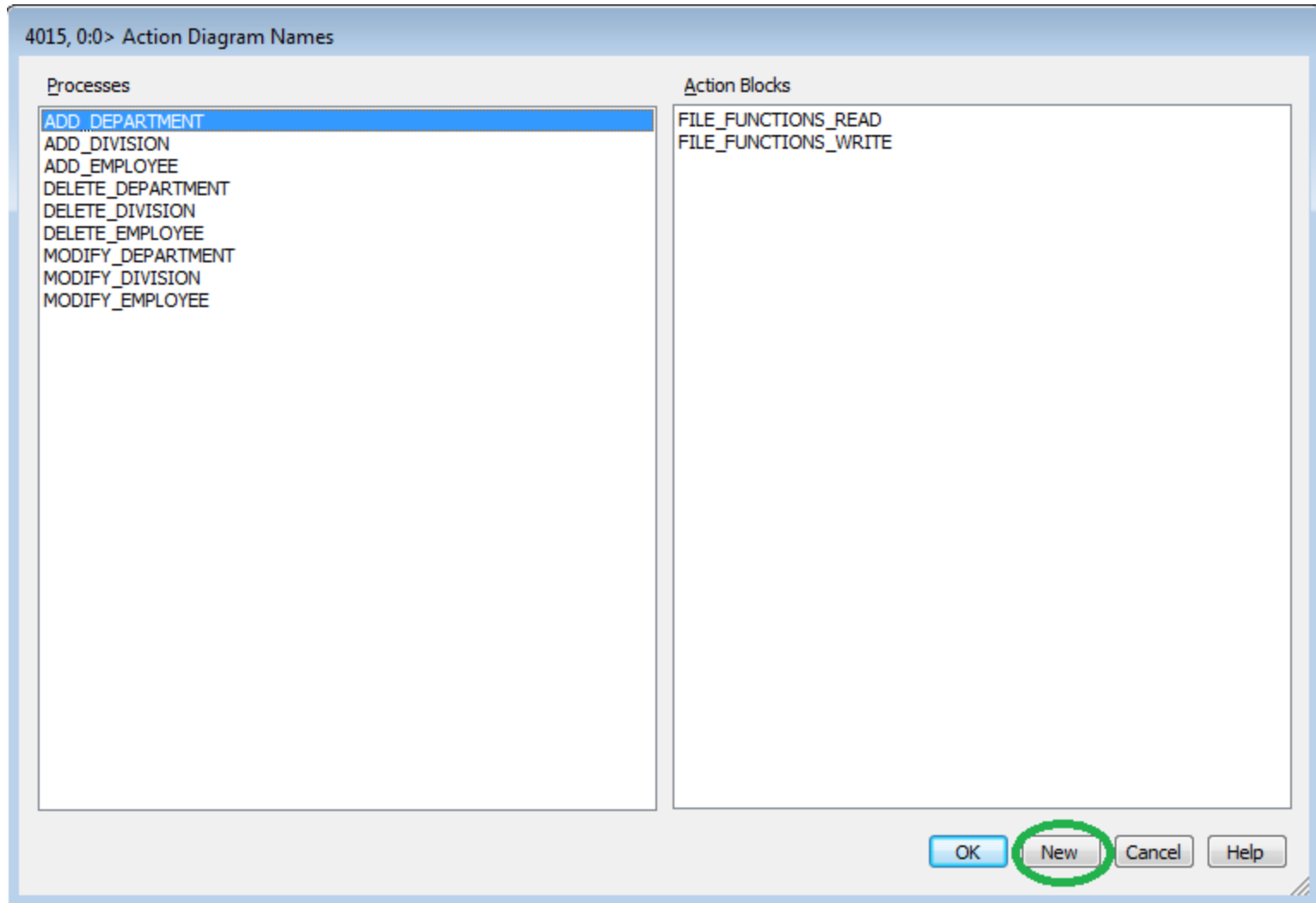
Earlier

- Do not have an option to create a new action diagram from Action Diagram Names Selection dialog

Now

- A New button is added to the Action Diagram Names Selection dialog to create an Action Diagram. This New button simplifies the creation of action diagrams

Action diagram Selection dialog



Default Import entity view optionality is set to mandatory

Earlier

- The default optionality for import views and attributes in action diagrams is currently optional (Sometimes) but in most cases, the optionality should be mandatory

Now

- The default value for the optionality of import entity and attribute views in action diagrams is now mandatory (Always)

Note: *This enhancement does not affect procedure step action diagrams which will continue to default the optionality of import entity and attribute views to optional (Sometimes)*

Add new import entity view

The screenshot displays a software development environment. On the left, an 'Action Diagram' window titled '309, 21:0> FILE_FUNCTIONS_READ - Action Diagram' shows a code editor with the following content:

```
FILE_FUNCTIONS_READ
IMPORTS:
  Work View import_file
    flag (optional)
  Work View import_fully
    name (optional)
  Entity View import_emplo
    name (optional)
    work_phone (optional)
  Work View import_file
    read_line (optional)
    handle (optional)
EXPORTS: ...
LOCALS: ...
ENTITY ACTIONS:

NOTE -----
Copyright © 2013 CA. All rights reserved.
-----

MOVE import_employee TO export_employee
MOVE import_file TO export_file
MOVE import_file TO local_file_handle

IF import_employee_name != ""
  NOTE *****
  Open Text File
  *****
  IF import_file_dialog
    SET local_file_handle = import_file_dialog
  ELSE
    SET local_file_handle = ""
```

On the right, an 'Add Import Entity View' dialog box is open, titled '4031, 166:4294967295 {5122}> Add Import Entity View'. The dialog has a 'Name' field and a dropdown menu currently set to 'Always', which is circled in green. Below the dropdown, there are several checkboxes:

- ☐ Supports entity actions (persistent)
- ☐ Lock required on entry
- ☐ Used as both input and output
- ☒ Initialize on every entry
- ☒ Generate attribute state flags

Below these checkboxes is a section titled 'Entity Types' containing a list of entities:

entity	DEPARTMENT
entity	DIVISION
entity	EMPLOYEE
entity	PROJECT
entity	TEAM

At the bottom of the dialog, there are buttons for 'OK', 'Back', 'Search...', 'Description...', 'Cancel', and 'Help'.

Set default deletion rule when adding a relationship

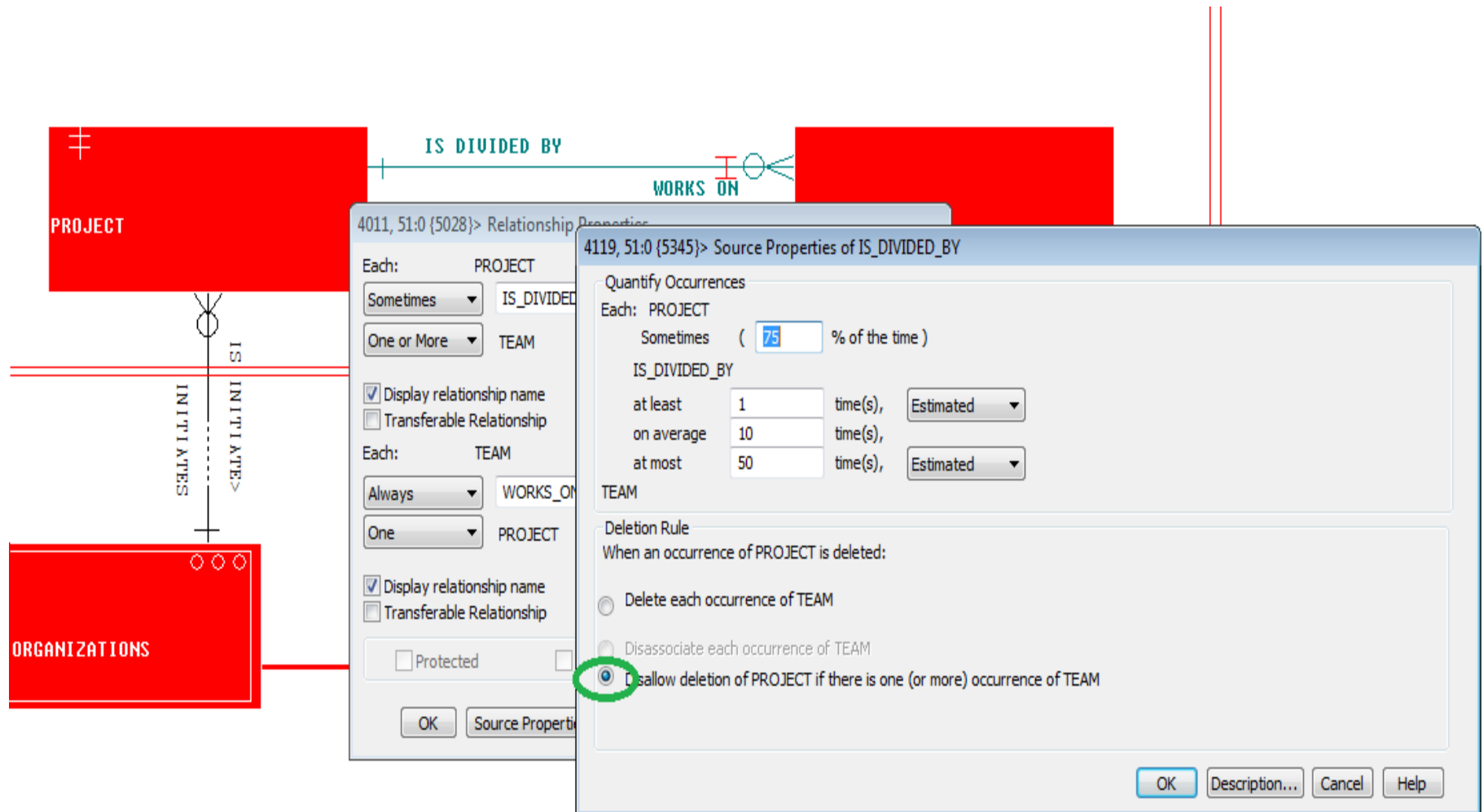
Earlier

- There is no default deletion rule selected while adding a relationship, user needs to enable the same manually

Now

- When creating relationships in the Entity Relationship Diagram, the default deletion rule will be indicated with the appropriate radio button being set. While not necessary, this eliminates the need to set it manually after adding the relationship “just to be sure”

Source properties of a relation



Default deletion rules set for a relationship

- Mandatory one to mandatory one
 - Source properties : Disallow deletion
 - Destination properties : Disallow deletion
- Optional one to mandatory one
 - Source properties : Disallow deletion
 - Destination properties : Disassociate each occurrence
- Optional one to optional one
 - Source properties : Disassociate each occurrence
 - Destination properties : Disassociate each occurrence
- Mandatory one to mandatory many
 - Source properties : Disallow deletion
 - Destination properties : Disallow deletion
- Optional many to mandatory many
 - Source properties : Disallow deletion
 - Destination properties : Disassociate each occurrence

Default deletion rules set for a relationship

- Optional one to mandatory many
 - Source properties : Disallow deletion
 - Destination properties : Disassociate each occurrence
- Mandatory one to optional many
 - Source properties : Disassociate each occurrence
 - Destination properties : Disallow deletion
- Optional one to optional many
 - Source properties : Disassociate each occurrence
 - Destination properties : Disassociate each occurrence
- Mandatory many to mandatory many
 - Source properties : Disallow deletion
 - Destination properties : Disallow deletion
- Optional many to optional many
 - Source properties : Disassociate each occurrence
 - Destination properties : Disassociate each occurrence

Fix highlighting after sort on the Navigation Diagram Open Window dialog

Earlier

- In the Navigation Diagram window selection dialog (Diagram / Open Window menu item), the selected item in the list is changing after sort operation

Now

- Retain the selection of a Procedure Step within the Window Selection dialog after a sort operation has been performed. This ensures that the item selected before a sort operation is done remains selected

Navigation diagram window selection dialog

4213, 0:4294967295 {6108}> Window Selection

Business Systems

EGOLF_SERVICES

Sort by

☐ Procedure Step ☐ Imported HTML ☐ Type ☒ Title

Procedure Step	Imported HTML	Type	Title
EGOLFER_HOME		Dialog Box	Add Scoring Record
EGOLFER_HOME		Dialog Box	Remove Scoring Record
EGOLFER_HOME		Dialog Box	Update Scoring Record
EGOLF_SERVICES_HOME0		Dialog Box	eGolf Golfer Registration
EGOLF_SERVICES_HOME0		Dialog Box	eGolf Services
EGOLF_SERVICES_HOME0		Dialog Box	eGolf Services Login
EGOLFER_HOME		Dialog Box	eGolfer Golfer Remove
EGOLFER_HOME		Dialog Box	eGolfer Golfer Update
EGOLFER_HOME		Dialog Box	eGolfer Home

4213, 0:4294967295 {6108}> Window Selection

Business Systems

EGOLF_SERVICES

Sort by

☒ Procedure Step ☐ Imported HTML ☐ Type ☐ Title

Procedure Step	Imported HTML	Type	Title
EGOLFER_HOME		Dialog Box	Add Scoring Record
EGOLFER_HOME		Dialog Box	Remove Scoring Record
EGOLFER_HOME		Dialog Box	Update Scoring Record
EGOLFER_HOME		Dialog Box	eGolfer Golfer Remove
EGOLFER_HOME		Dialog Box	eGolfer Golfer Update
EGOLFER_HOME		Dialog Box	eGolfer Home
EGOLF_SERVICES_HOME0		Dialog Box	eGolf Golfer Registration
EGOLF_SERVICES_HOME0		Dialog Box	eGolf Services
EGOLF_SERVICES_HOME0		Dialog Box	eGolf Services Login

Pass selected items on Windows to plug-in applications

Earlier

- Pass object information from selected controls within the Navigation Diagram to plug-in applications. Earlier, that information was attainable only when controls were selected from the pane in the lower right corner of the Navigation Diagram

Now

- While designing plug-in applications for the Gen Toolset, you can determine the controls that are selected on an open window in the Navigation Diagram

Navigation diagram Open Window and lower right pane

eGolf Golfer Registration

User Information

The User ID and Password will be used by you to login to eGolf Services.

The User ID can be up to 8 alphanumeric characters of your choosing, but must be unique within our website. We will let you know if it already exists.

User ID:

To ensure the security of your personal information, please designate a password of up to 8 alphanumeric characters.

Password:

Confirm Password:

eGolf Services maintains minimal information about our members, only so that we can personalize your web experience. All fields are required.

First Name:

Last Name:

Email Address:

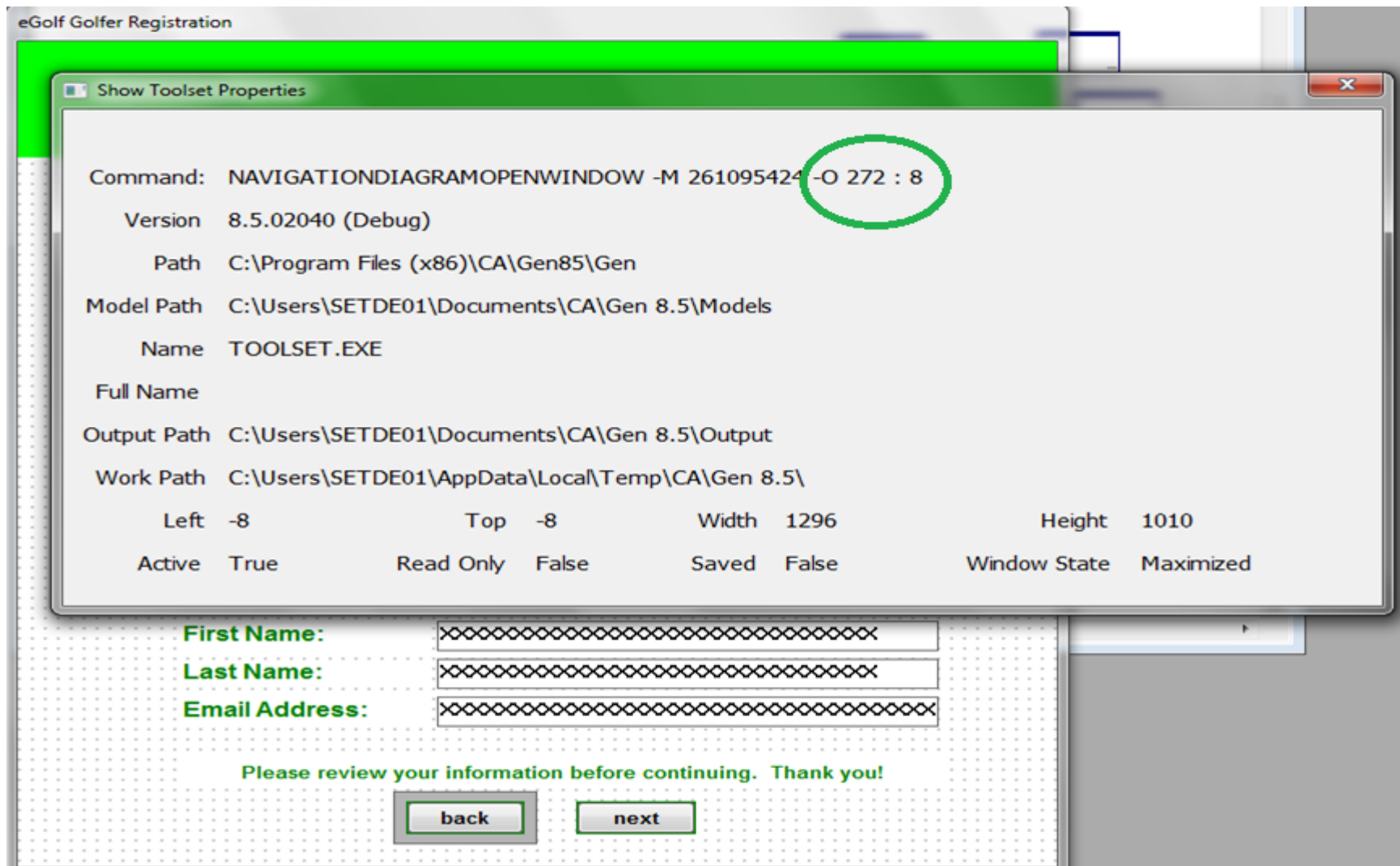
Please review your information before continuing. Thank you!

NET Mode)

```
graph LR; A[Central Box] --> B[Entry Field: EXPORT GOLFER EMAIL_ADDRESS]; A --> C[Entry Field: EXPORT GOLFER FIRST_NAME]; A --> D[Entry Field: EXPORT GOLFER LAST_NAME]; A --> E[Entry Field: EXPORT GOLFER PASSWORD]; A --> F[Entry Field: EXPORT GOLFER USERID]; A --> G[Entry Field: EXPORT_CONFIRMATION GOLFER P]; A --> H[Literal "Please review your information b"]; A --> I[Literal "The User ID and Password will be"]; A --> J[Literal "The User ID can be up to 8 alph"]; A --> K[Literal "To ensure the security of your p"]; A --> L[Literal "User Information"]; A --> M[Literal "eGolf Services maintains minimal"]; A --> N[Picture: GOLFRAINBACK]; A --> O[Picture: GOLFRAIN_BANNER]; A --> P[Push Button: back]; A --> Q[Push Button: next];
```

- eGolf Golfer Registration
- Entry Field: EXPORT GOLFER EMAIL_ADDRESS
- Entry Field: EXPORT GOLFER FIRST_NAME
- Entry Field: EXPORT GOLFER LAST_NAME
- Entry Field: EXPORT GOLFER PASSWORD
- Entry Field: EXPORT GOLFER USERID
- Entry Field: EXPORT_CONFIRMATION GOLFER P
- Literal "Please review your information b"
- Literal "The User ID and Password will be"**
- Literal "The User ID can be up to 8 alph"
- Literal "To ensure the security of your p"
- Literal "User Information"
- Literal "eGolf Services maintains minimal"
- Picture: GOLFRAINBACK
- Picture: GOLFRAIN_BANNER
- Push Button: back
- Push Button: next

Selected Control Information



Object Decomposition Report

9.2.A6: Object Decomposition Report

Hide Back Forward Print

Contents Index Search

267 - PRMPKWD
268 - PRMPVAL
269 - PRSSTYL
270 - PSBTNOC
271 - PSHBTNIM
272 - PUSHBTN
273 - RDBTNOC
274 - RDOBTNIM
275 - RECREP
276 - RELTYPE
277 - SCRLAMT
278 - SCTCAPB
279 - SCTEXEC
280 - SIMPCME
281 - SLTACBLK
282 - SLTACT

(3) Push Button (PUSHBTN)

(0) Window Set ([WINSET](#))

****>**Subsetting group SCREEN, has ART

---WINSET char ([WNSCHAR](#)), type CHAR, opt, dflt=space, column=26

---Adjust control positions ([WNSCHR2](#)), type CHAR, opt, dflt=space, column=27

++>Default (DEFAULT), value=space

++>Mode switch causes adjustment (ADJUST), value="A"

---Tab control index ([WNSHRT1](#)), type SHORT, opt, dflt=0, column=5

---Tab control page index ([WNSHRT2](#)), type SHORT, opt, dflt=0, column=6

---WINSET string ([WNSSTR](#)), type STRING, opt

..>sometimes has ([HASCSTPR](#), inv [IS4WINST](#)) many ordered [CSTPROP](#) [modifying] {copy} <copy>

..>sometimes is overridden by ([OVERIDN](#), inv [OVERIDS](#)) many [WNCSTMZ](#) [referencing] {ignore}

Partitioning indicated for Data Structure and Data Store List Diagrams

Earlier

- When table and/or tablespace partitionings created via the Table / Tablespace Partitioning Plug-ins are available, the Data Store List and Data Structure List diagrams do not give any indication that these partitionings are available

Now

- Partitioning indicated in Data Structure and Data Store List Diagrams. The Data Store and Data Structure lists indicate whether a table/tablespace has been partitioned (using Table/Tablespace Partitioning Plug-in). This makes it easier to determine the partitioning status of a table/tablespace

Partitioned Table/Tablespace in Data Structure and Data Store lists

339, 229:1> Technical Design

** Technical Design	DB2 z/OS
Technical Design	DB2 UDB
Technical Design	JDBC

411, 229:1> DB2 z/OS Data Structure List

Type	Name	Format	Length	Optionality	SEQ
Table	GOLFER (Has Partitioning)				
Table	SCORING_RECORD				

426, 229:1> DB2 z/OS Data Store List

Database	TableSpace	Table	Format	Length	Optionality	SEQ
IEFDB	T0000008	GOLFER (Has Partitioning)	rec(25,4)sum		IEFUCAT	Any
	T0000012	SCORING_RECORD	rec(15,1)		IEFUCAT	Any

Fix window sort when a dialect is displayed

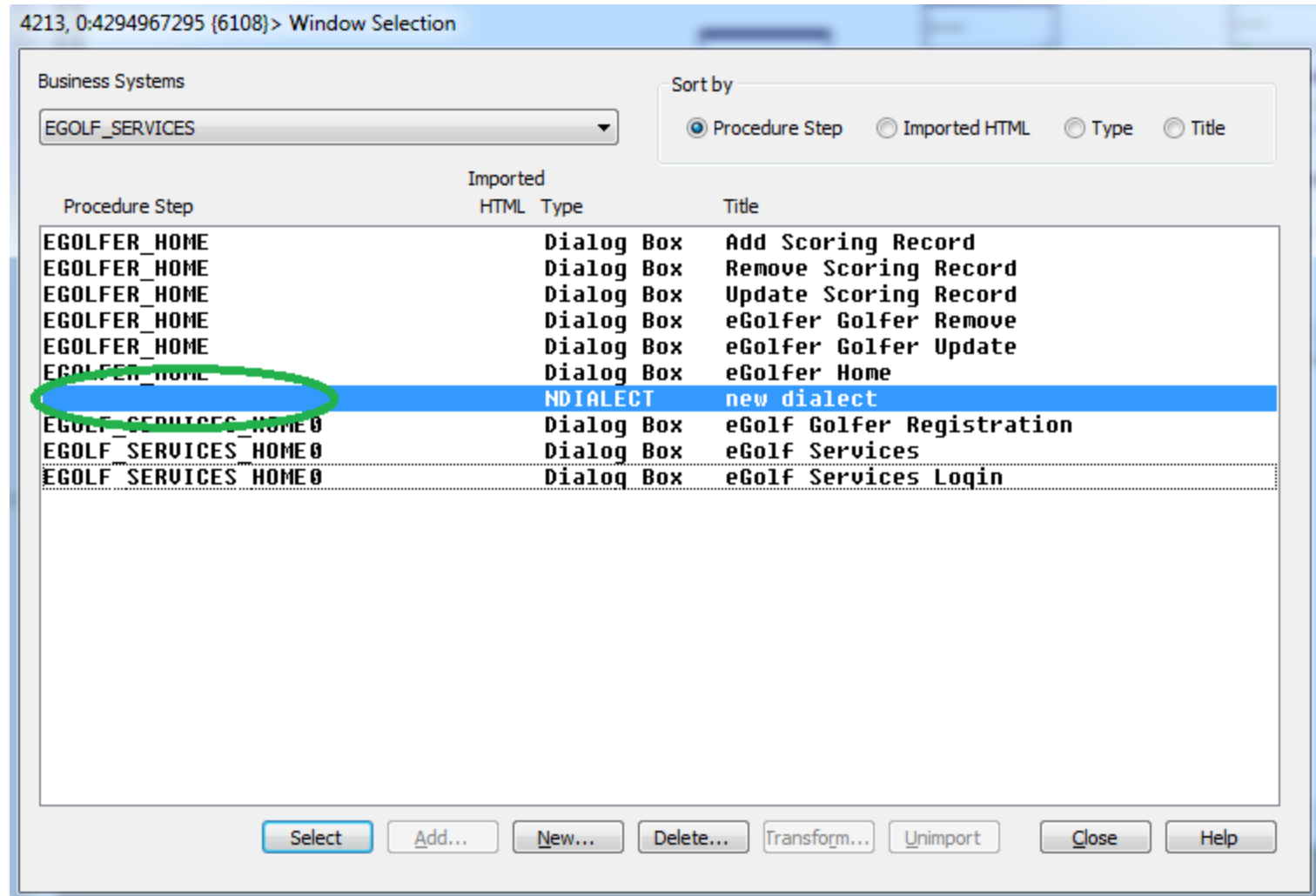
Earlier

- In the Navigation Diagram window selection dialog (Diagram / Open Window menu item), the procedure step name is not displayed for dialects

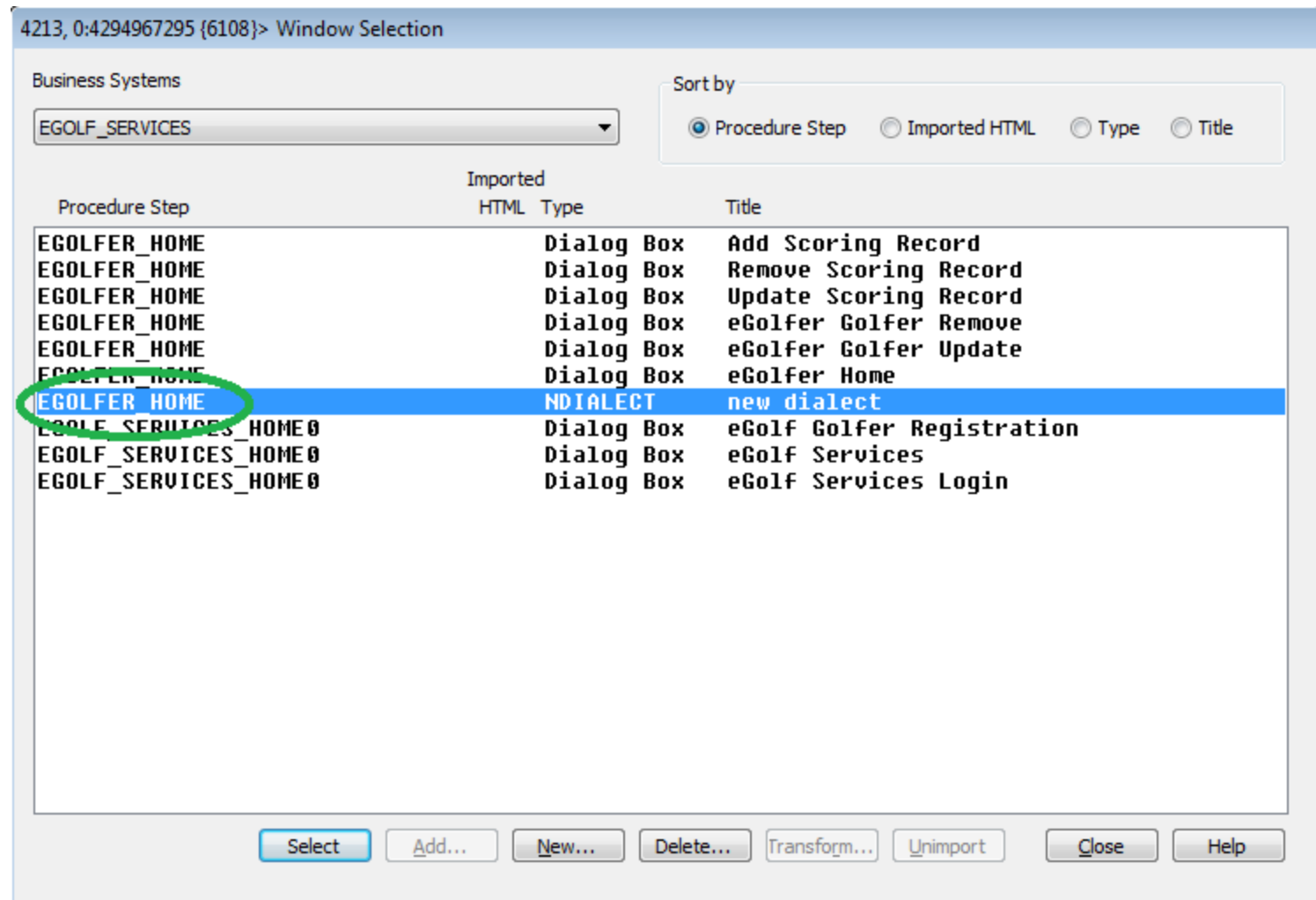
Now

- Populate the Procedure Step name In the Window Selection dialog for a dialect. This makes it easier to determine which Procedure Step a dialect belongs

Previous new dialect behavior



Current new dialect behavior



Sort order - Before

4213, 0:4294967295 {6108}> Window Selection

Business Systems
EGOLF_SERVICES

Sort by
☒ Procedure Step ☐ Imported HTML ☐ Type ☐ Title

Procedure Step	Imported HTML	Type	Title
	NDIALECT		new dialect
EGOLFER_HOME	Dialog Box		Add Scoring Record
EGOLFER_HOME	Dialog Box		Remove Scoring Record
EGOLFER_HOME	Dialog Box		Update Scoring Record
EGOLFER_HOME	Dialog Box		eGolfer Golfer Remove
EGOLFER_HOME	Dialog Box		eGolfer Golfer Update
EGOLFER_HOME	Dialog Box		eGolfer Home
EGOLF_SERVICES_HOME0	Dialog Box		eGolf Golfer Registration
EGOLF_SERVICES_HOME0	Dialog Box		eGolf Services
EGOLF_SERVICES_HOME0	Dialog Box		eGolf Services Login

4213, 0:4294967295 {6108}> Window Selection

Business Systems
EGOLF_SERVICES

Sort by
☐ Procedure Step ☐ Imported HTML ☒ Type ☐ Title

Procedure Step	Imported HTML	Type	Title
EGOLFER_HOME	Dialog Box		Add Scoring Record
EGOLFER_HOME	Dialog Box		Remove Scoring Record
EGOLFER_HOME	Dialog Box		Update Scoring Record
EGOLF_SERVICES_HOME0	Dialog Box		eGolf Golfer Registration
EGOLF_SERVICES_HOME0	Dialog Box		eGolf Services
EGOLF_SERVICES_HOME0	Dialog Box		eGolf Services Login
EGOLFER_HOME	Dialog Box		eGolfer Golfer Remove
EGOLFER_HOME	Dialog Box		eGolfer Golfer Update
EGOLFER_HOME	Dialog Box		eGolfer Home
	NDIALECT		new dialect

Sort order - After

4213, 0:4294967295 {6108}> Window Selection

Business Systems
EGOLF_SERVICES

Sort by
☒ Procedure Step ☐ Imported HTML ☐ Type ☐ Title

Procedure Step	Imported HTML	Type	Title
EGOLFER_HOME		Dialog Box	Add Scoring Record
EGOLFER_HOME		Dialog Box	Remove Scoring Record
EGOLFER_HOME		Dialog Box	Update Scoring Record
EGOLFER_HOME		Dialog Box	eGolfer Golfer Remove
EGOLFER_HOME		Dialog Box	eGolfer Golfer Update
EGOLFER_HOME		Dialog Box	eGolfer Home
EGOLFER_HOME		NDIALECT	new dialect
EGOLF_SERVICES_HOME0		Dialog Box	eGolf Golfer Registration
EGOLF_SERVICES_HOME0		Dialog Box	eGolf Services
EGOLF_SERVICES_HOME0		Dialog Box	eGolf Services Login

4213, 0:4294967295 {6108}> Window Selection

Business Systems
EGOLF_SERVICES

Sort by
☐ Procedure Step ☐ Imported HTML ☒ Type ☐ Title

Procedure Step	Imported HTML	Type	Title
EGOLFER_HOME		Dialog Box	Add Scoring Record
EGOLFER_HOME		Dialog Box	Remove Scoring Record
EGOLFER_HOME		Dialog Box	Update Scoring Record
EGOLF_SERVICES_HOME0		Dialog Box	eGolf Golfer Registration
EGOLF_SERVICES_HOME0		Dialog Box	eGolf Services
EGOLF_SERVICES_HOME0		Dialog Box	eGolf Services Login
EGOLFER_HOME		Dialog Box	eGolfer Golfer Remove
EGOLFER_HOME		Dialog Box	eGolfer Golfer Update
EGOLFER_HOME		Dialog Box	eGolfer Home
EGOLFER_HOME		NDIALECT	new dialect

View matching dialogs displayed only when necessary

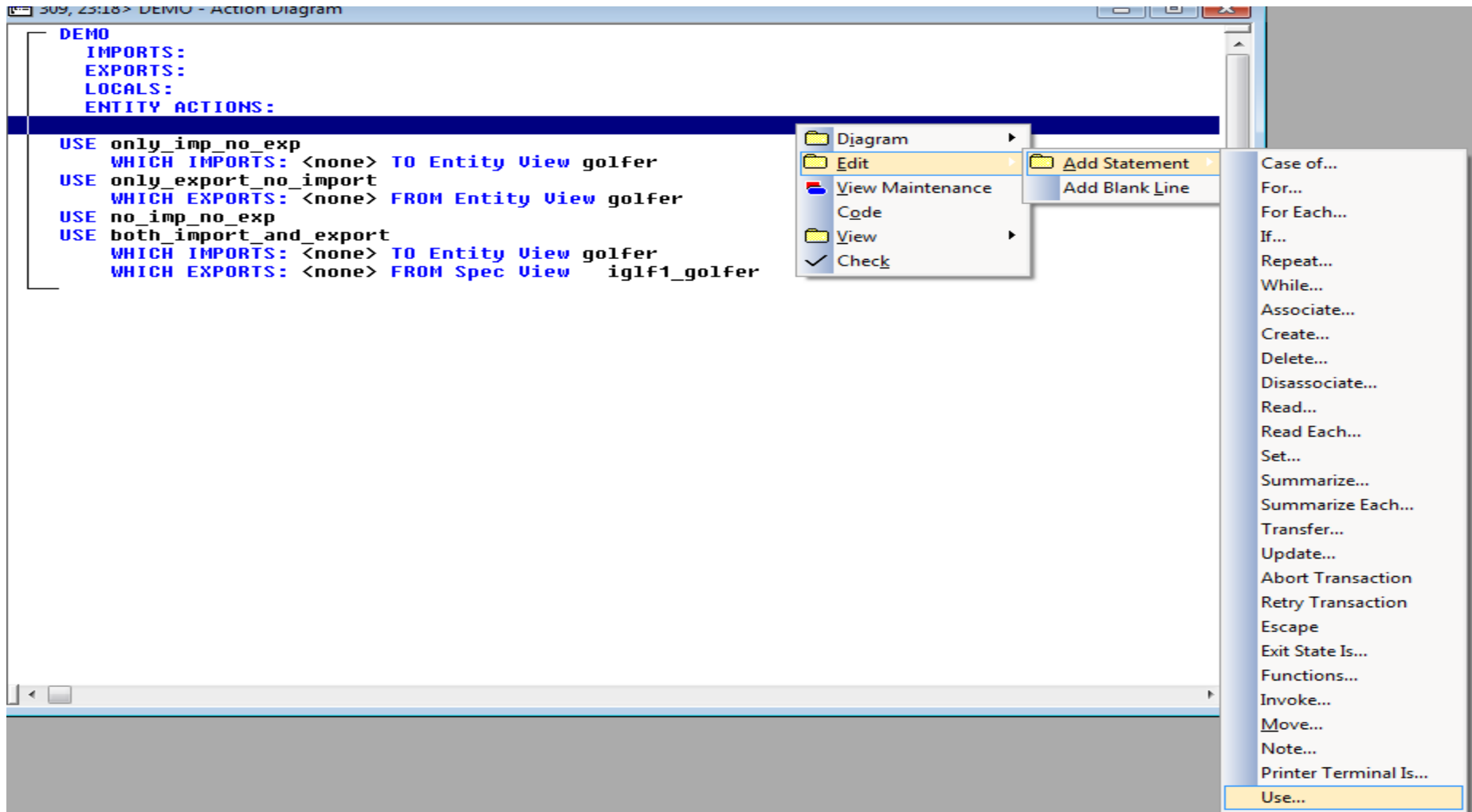
Earlier

- When adding a USE statement, Import and Export view matching dialogs pop up, even when the called action diagram has no parameters to match

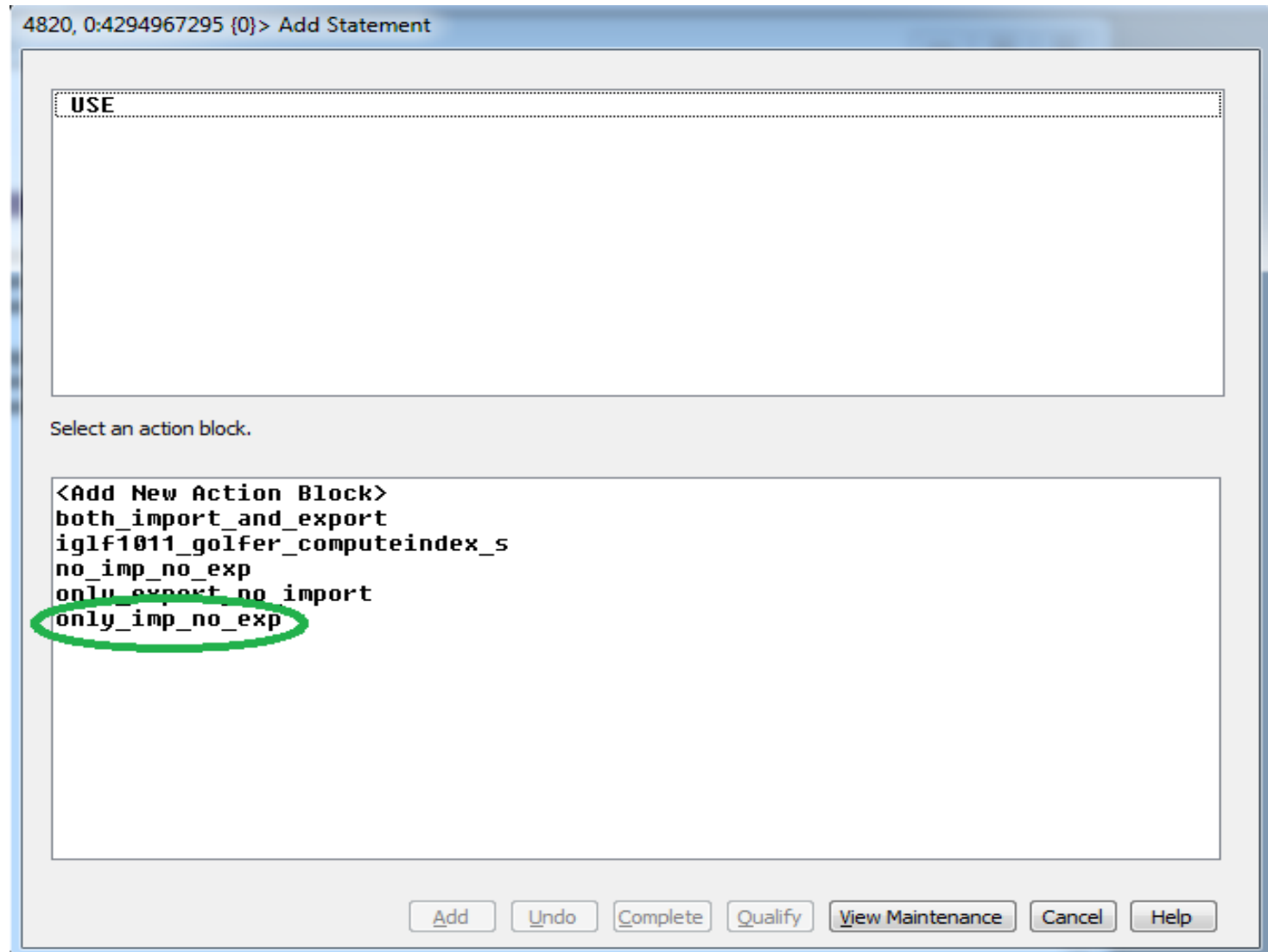
Now

- Import and Export view matching dialogs will only pop up when there are parameters associated to each one of them

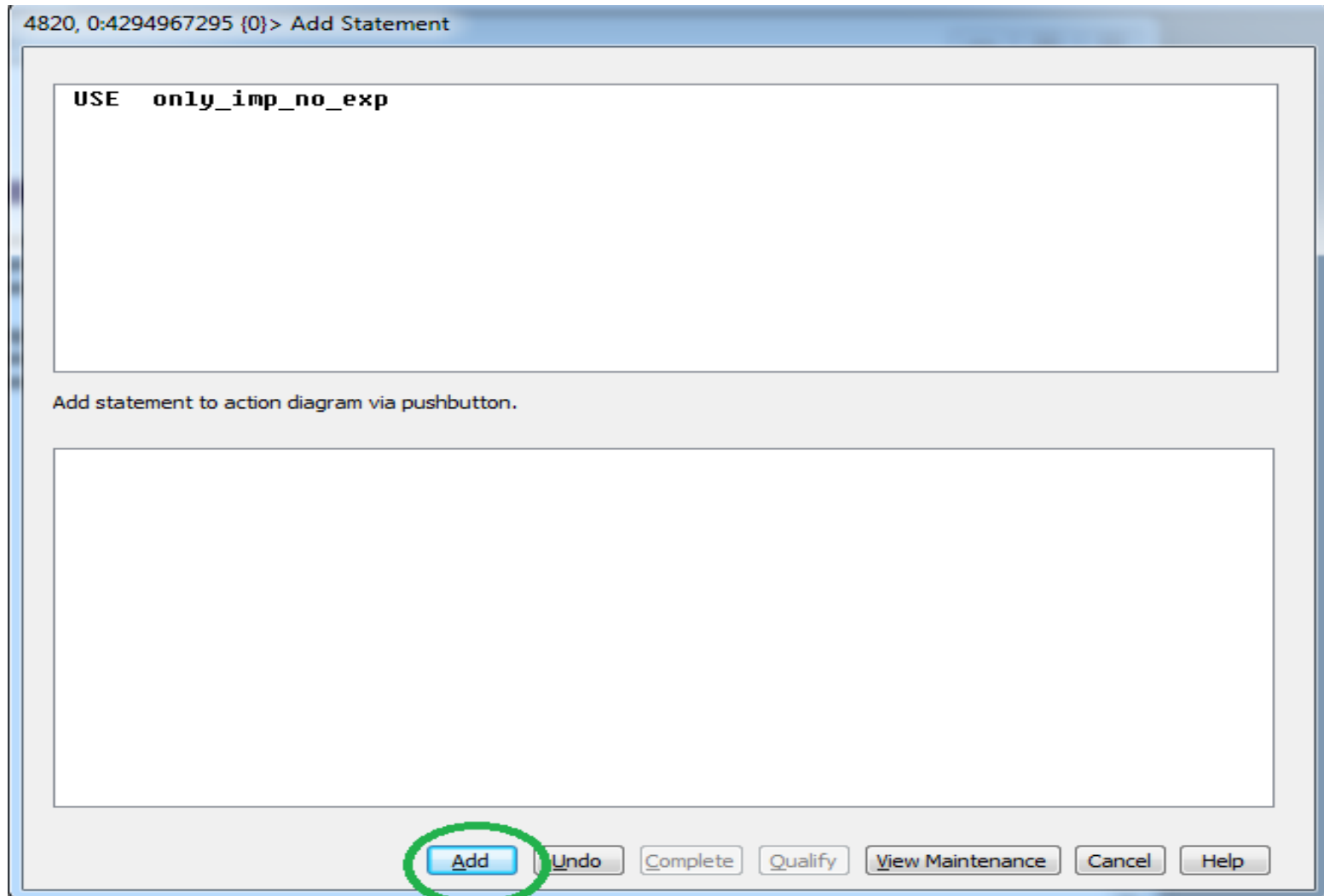
Before – Add a use statement



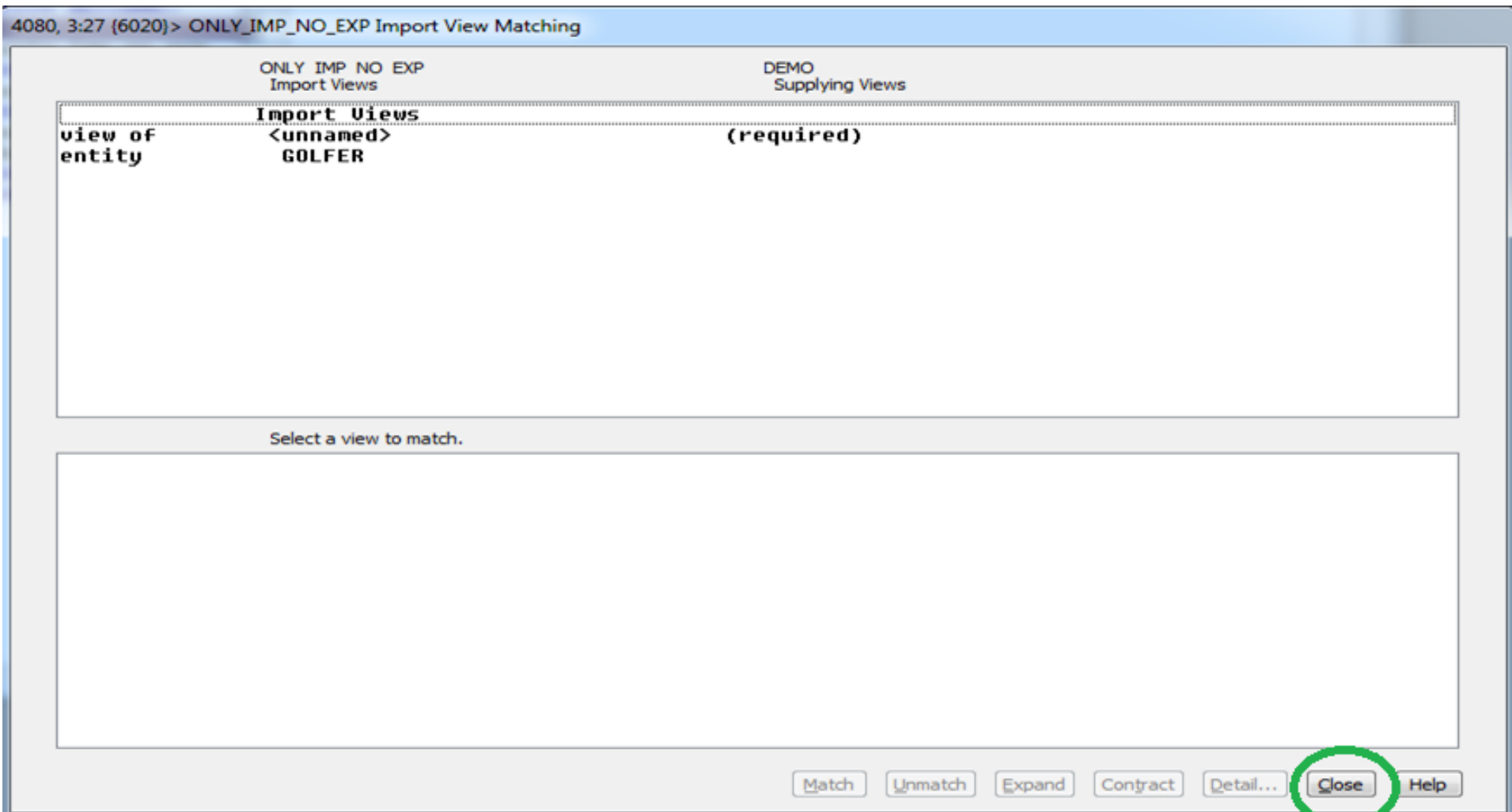
Before – Select an action block



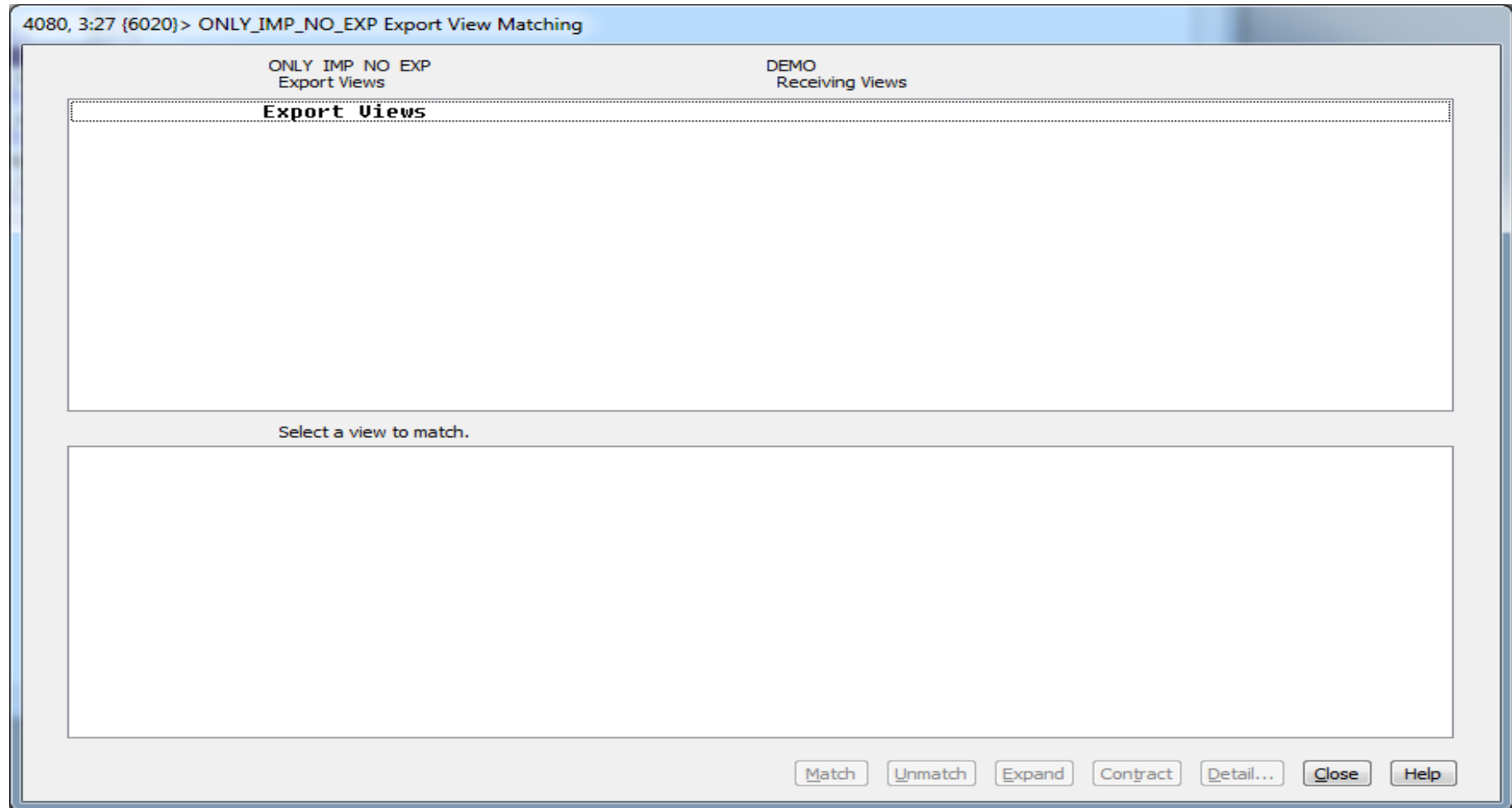
Before – Add



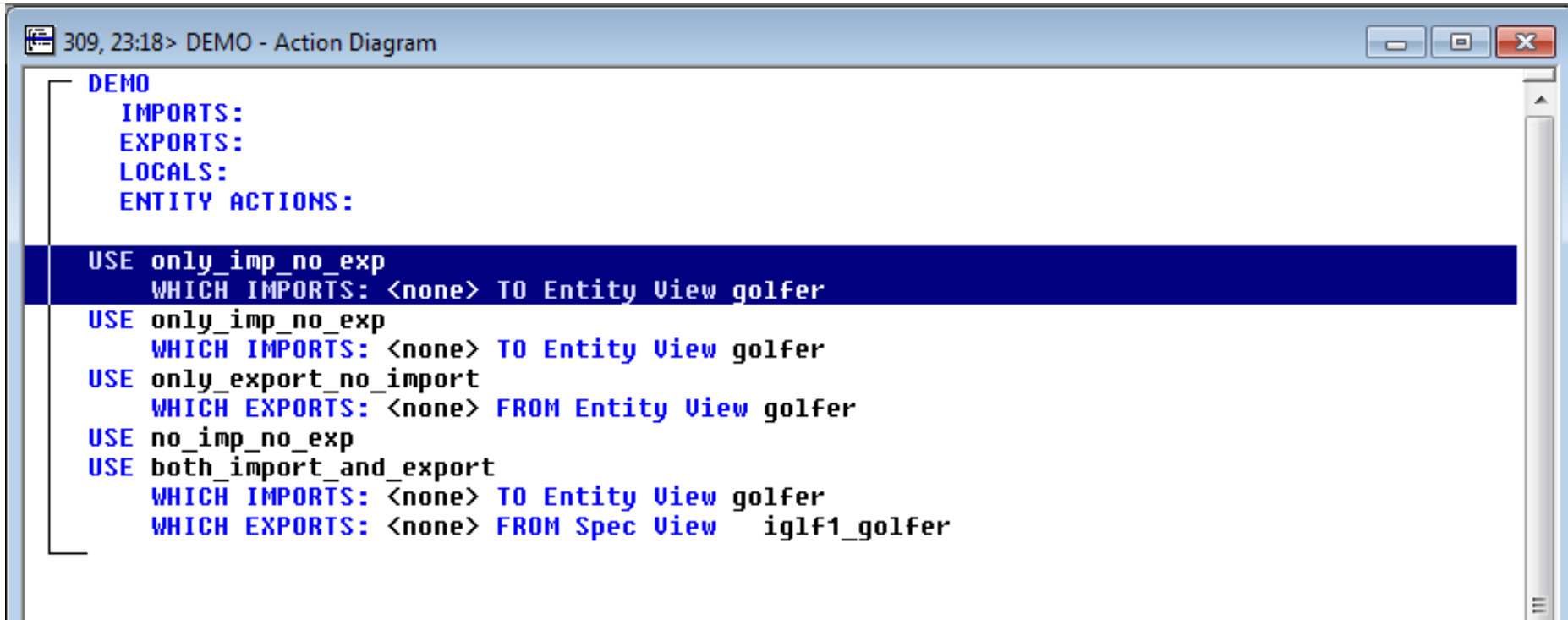
Before – Import view matching dialog



Before – Export view matching dialog



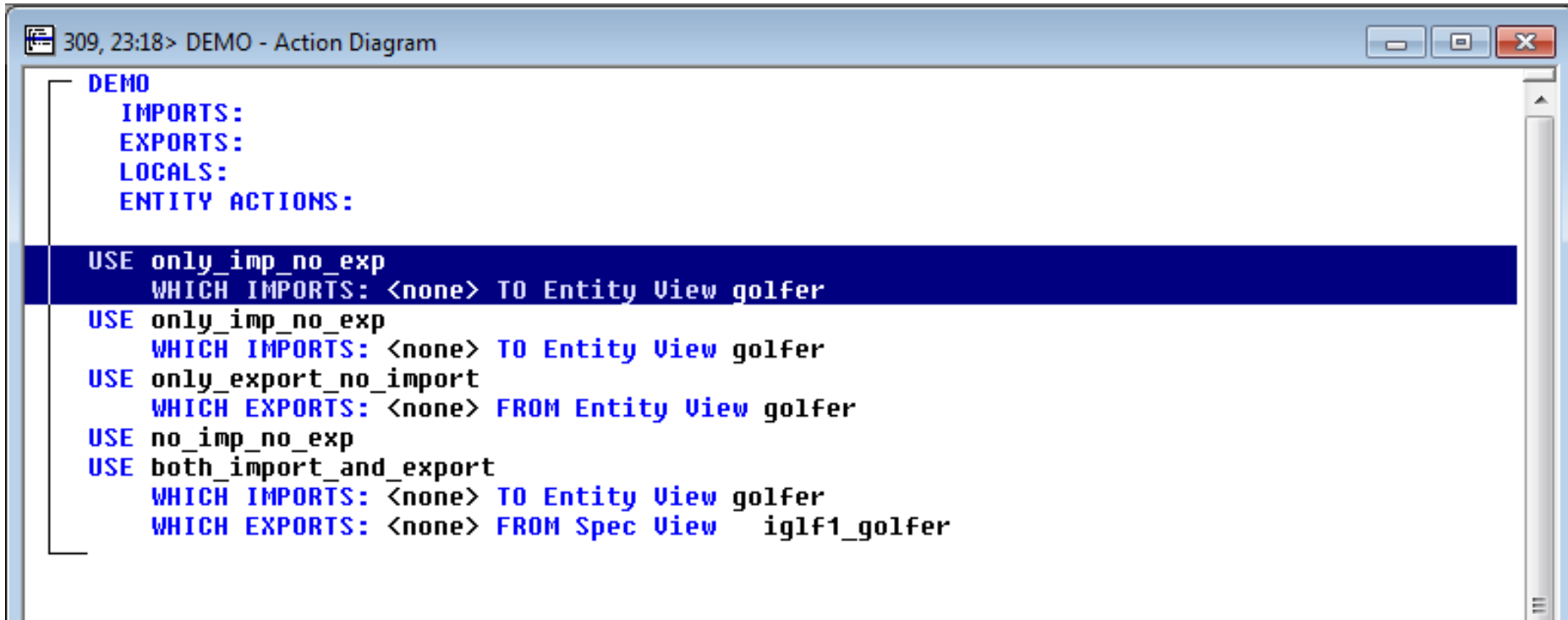
Before – Use Statement



```
309, 23:18> DEMO - Action Diagram
DEMO
  IMPORTS:
  EXPORTS:
  LOCALS:
  ENTITY ACTIONS:

USE only_imp_no_exp
  WHICH IMPORTS: <none> TO Entity View golfer
USE only_imp_no_exp
  WHICH IMPORTS: <none> TO Entity View golfer
USE only_export_no_import
  WHICH EXPORTS: <none> FROM Entity View golfer
USE no_imp_no_exp
USE both_import_and_export
  WHICH IMPORTS: <none> TO Entity View golfer
  WHICH EXPORTS: <none> FROM Spec View iglf1_golfer
```

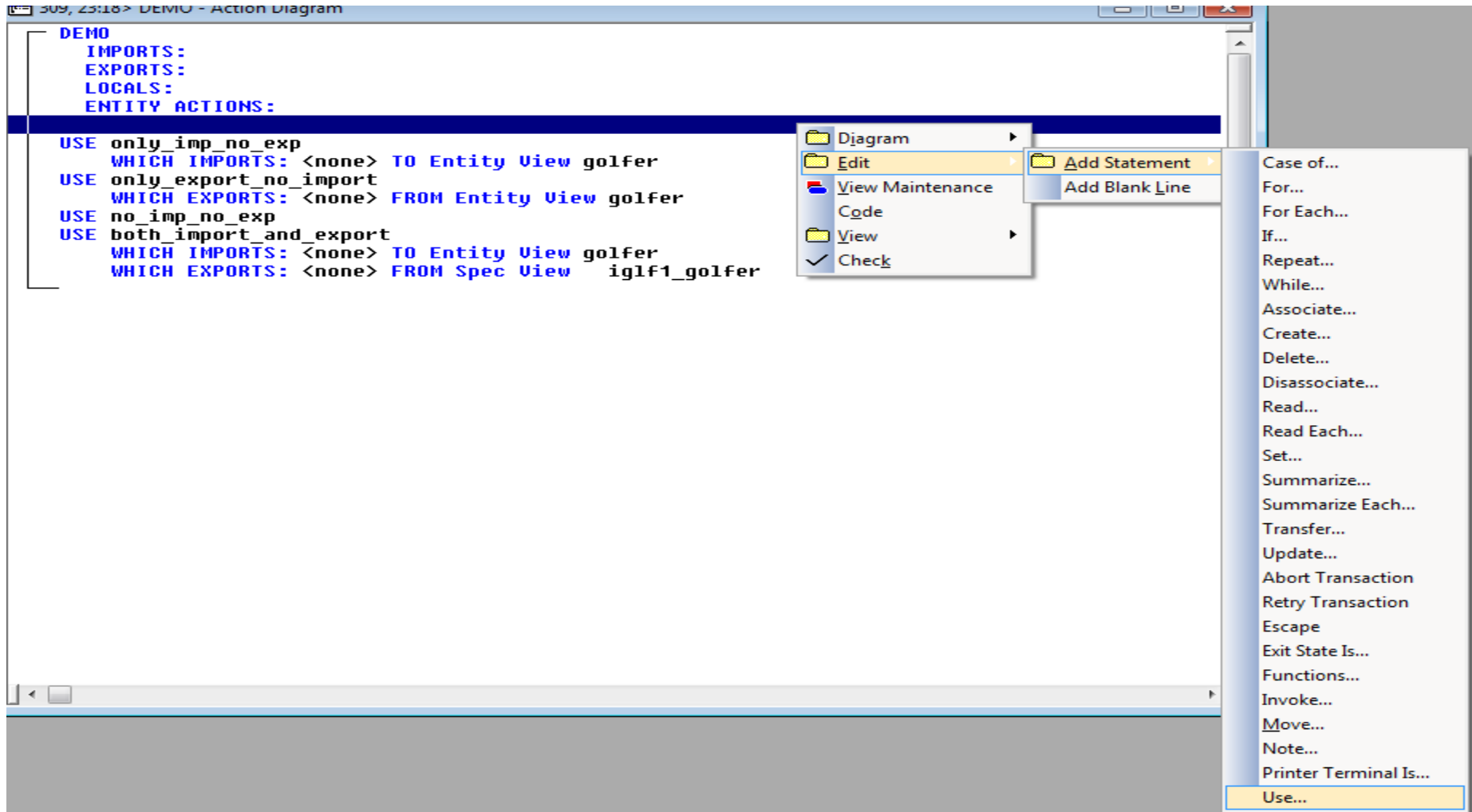
Before – Use Statement



```
309, 23:18> DEMO - Action Diagram
DEMO
  IMPORTS:
  EXPORTS:
  LOCALS:
  ENTITY ACTIONS:

USE only_imp_no_exp
  WHICH IMPORTS: <none> TO Entity View golfer
USE only_imp_no_exp
  WHICH IMPORTS: <none> TO Entity View golfer
USE only_export_no_import
  WHICH EXPORTS: <none> FROM Entity View golfer
USE no_imp_no_exp
USE both_import_and_export
  WHICH IMPORTS: <none> TO Entity View golfer
  WHICH EXPORTS: <none> FROM Spec View iglf1_golfer
```


After – Add a use statement



After – Select an action block

4820, 0:4294967295 {0}> Add Statement

USE

Select an action block.

<Add New Action Block>
both_import_and_export
iglf1011_golfer_computeindex_s
no_imp_no_exp
only_export_no_import
only_imp_no_exp

Add Undo Complete Qualify View Maintenance Cancel Help

After – Add

4820, 0:4294967295 {0}> Add Statement

USE only_imp_no_exp

Add statement to action diagram via pushbutton.

After – Import view matching dialog

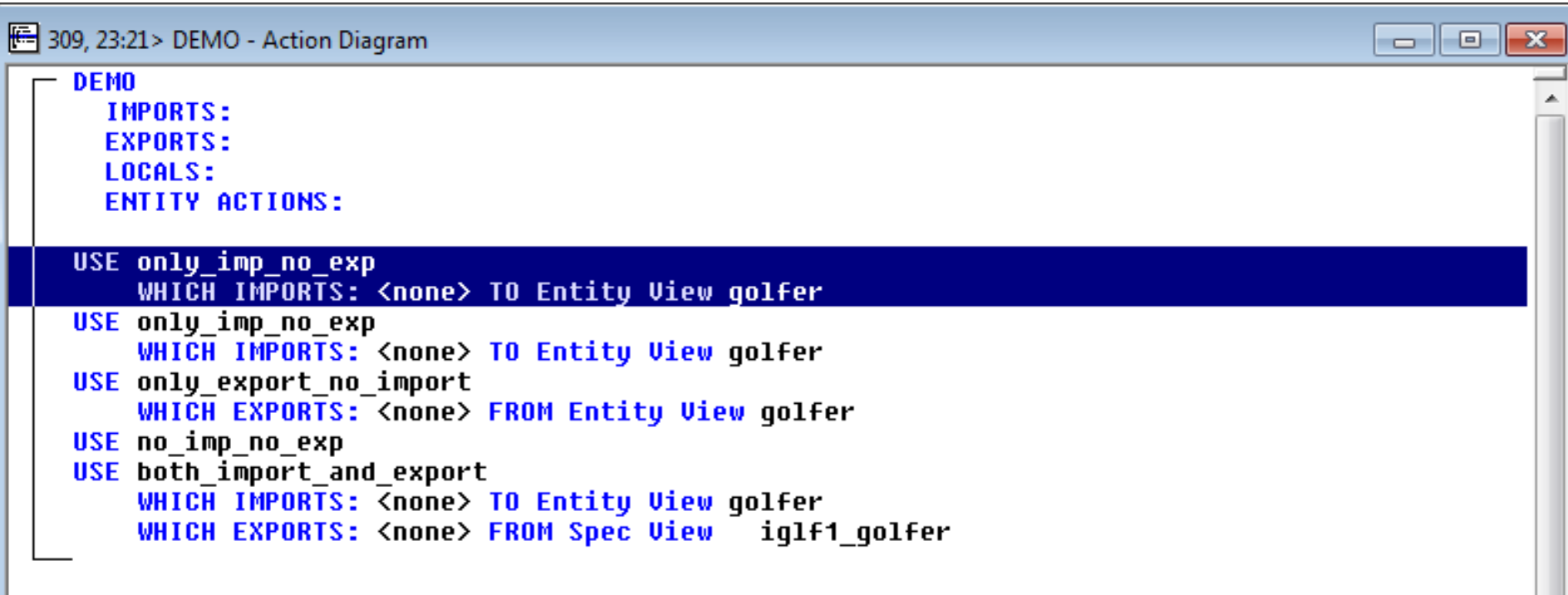
4080, 3:35 {6020}> ONLY_IMP_NO_EXP Import View Matching

	ONLY IMP NO EXP Import Views	DEMO Supplying Views
view of entity	Import Views <unnamed> GOLFER	(required)

Select a view to match.

Match Unmatch Expand Contract Detail... **Close** Help

After – Use statement



```
309, 23:21> DEMO - Action Diagram  
DEMO  
IMPORTS:  
EXPORTS:  
LOCALS:  
ENTITY ACTIONS:  
USE only_imp_no_exp  
WHICH IMPORTS: <none> TO Entity View golfer  
USE only_imp_no_exp  
WHICH IMPORTS: <none> TO Entity View golfer  
USE only_export_no_import  
WHICH EXPORTS: <none> FROM Entity View golfer  
USE no_imp_no_exp  
USE both_import_and_export  
WHICH IMPORTS: <none> TO Entity View golfer  
WHICH EXPORTS: <none> FROM Spec View iglf1_golfer
```

Questions