

CD SWAT

DevTest 9.5.1



How-To

DevTest ALM Integration

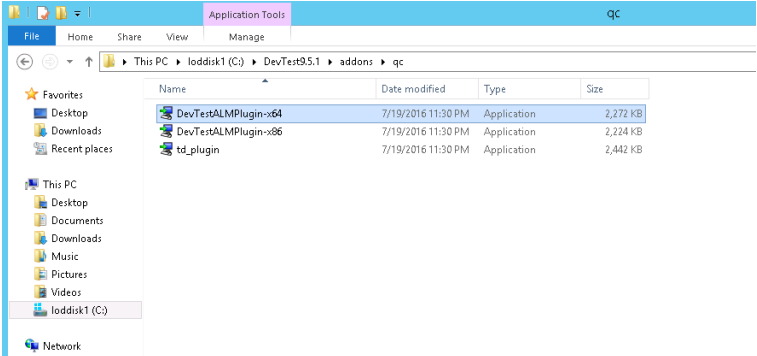
Prepared by: Surya Suravarapu
Date: October 2016

Table of Contents

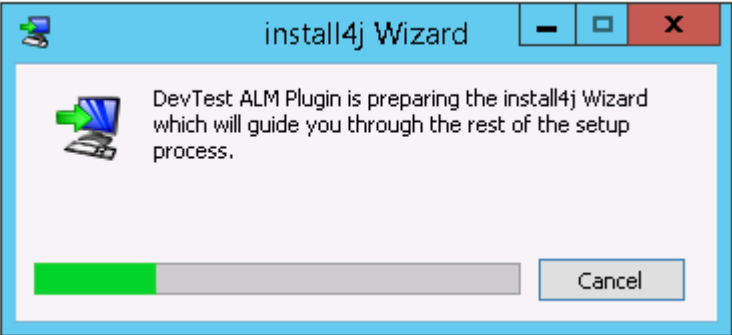
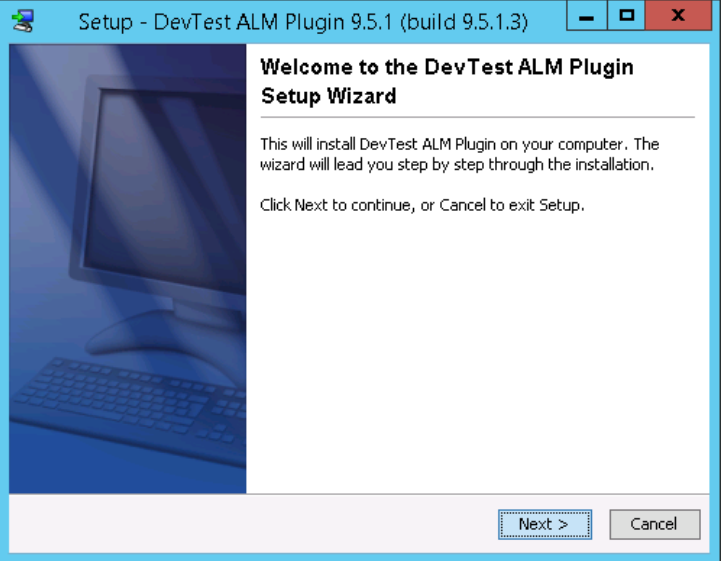
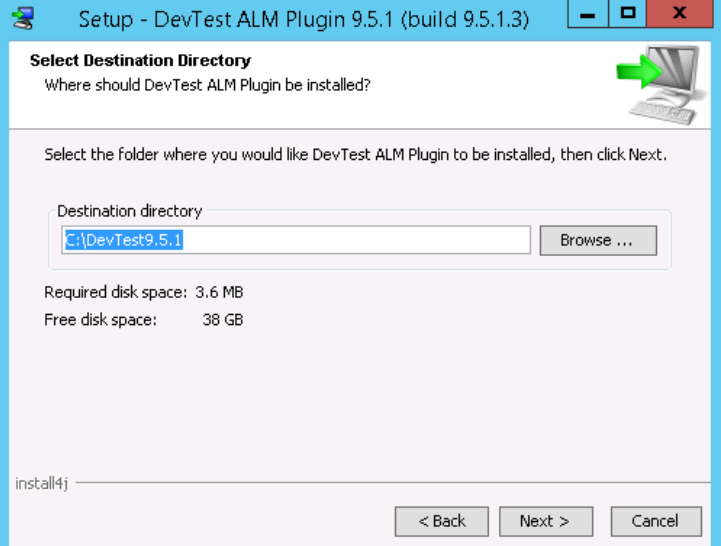
DevTest – ALM Prerequisites	3
Choosing an installer	3
DevTest – ALM Integration Setup	4
Devtest Connection properties	5
Verification of the install	6
Setup of Tests in ALM	7
Defining test under Test Plan.....	7
Defining Test Set under Test Lab	11
Viewing the Test Runs	13

DevTest – ALM Prerequisites

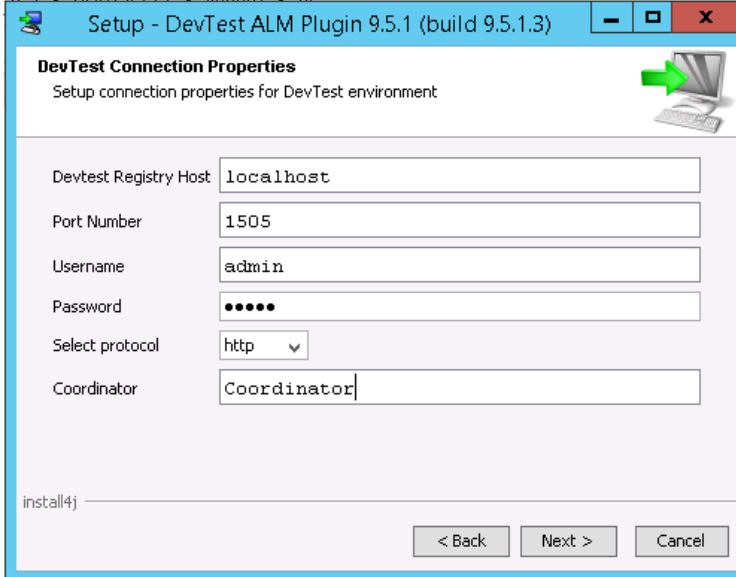
Choosing an installer

	<p>The installer for ALM integration with DevTest are present inside Lisa Root → addons → qc folder. Here, we have three installers. Depending on the version of HP ALM / HP QC and whether it is 32 bit or 64 bit, you can choose the installer.</p>
	<p>For HP ALM 12.2 or 12.5 we can choose the DevTestALMPlugin-x64 (64 bit) and DevTestALMPlugin-x86 (32 bit). (DevTest 9.1 and later) For older versions, we can use td_plugin installer.</p> <p>Pre requisites can be found below.</p> <p>ALM https://docops.ca.com/devtest-solutions/9-5/en/installing/installing-integration-tools/install-devtest-alm-plugin-in#InstallDevTestALMPlug-in-Prerequisites</p> <p>QC (Older) https://docops.ca.com/devtest-solutions/8-0/en/installing-and-migrating/installing/installing-integration-tools/install-the-hp-alm-quality-center-plugin-in</p>
	<p>Contact CA Support Online</p> <p>The plugins as delivered with DevTest 9.1.0 and 9.5.1 GA need to be updated so please open a new case on CA Support Online to get the latest version</p>

DevTest – ALM Integration Setup

	<p>For the purpose of the document, we chose the 64 bit ALM installer. The installation will be as given below.</p>
	<p>The installation wizard home screen is as given below.</p>
	<p>We can select the directory where we would like to install the plugin as shown in below screen.</p>

Devtest Connection properties



Setup - DevTest ALM Plugin 9.5.1 (build 9.5.1.3)

DevTest Connection Properties
Setup connection properties for DevTest environment

Devtest Registry Host: localhost

Port Number: 1505

Username: admin

Password:

Select protocol: http

Coordinator: Coordinator

install4j

< Back Next > Cancel

In the below setup screen, provide the DevTest Connection properties.

DevTest Registry Host – Host name where the Registry will run

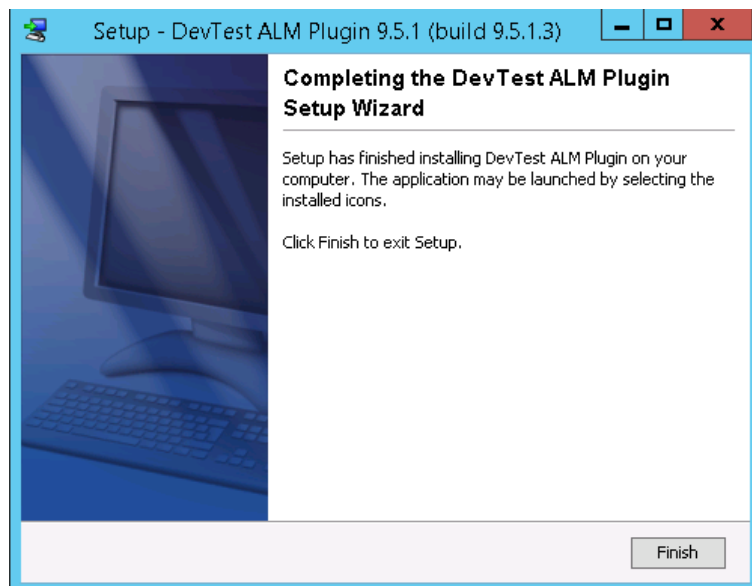
Port Number – Port number on which Registry service will run

Username – User name for the DevTest connection

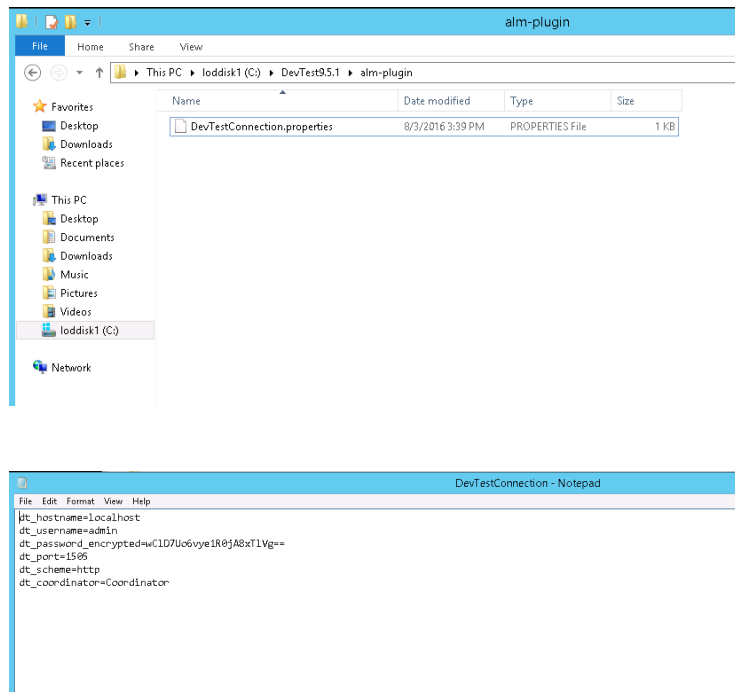
Password – Password corresponding to the DevTest user name

Protocol – Select the protocol used for communication

Coordinator – The name of Coordinator server

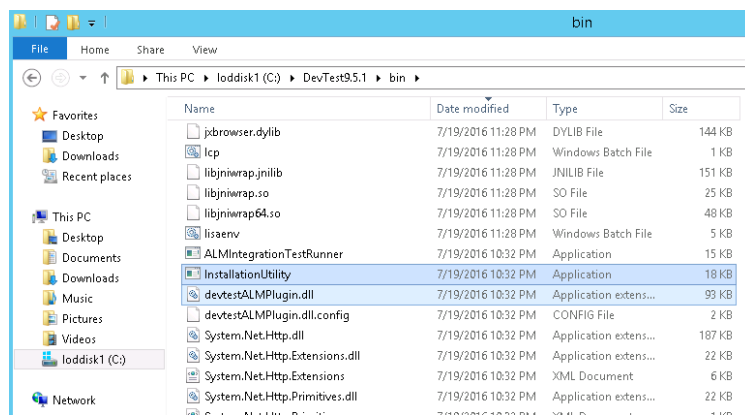


After this, the installer will continue as shown below and we can see the finish screen.

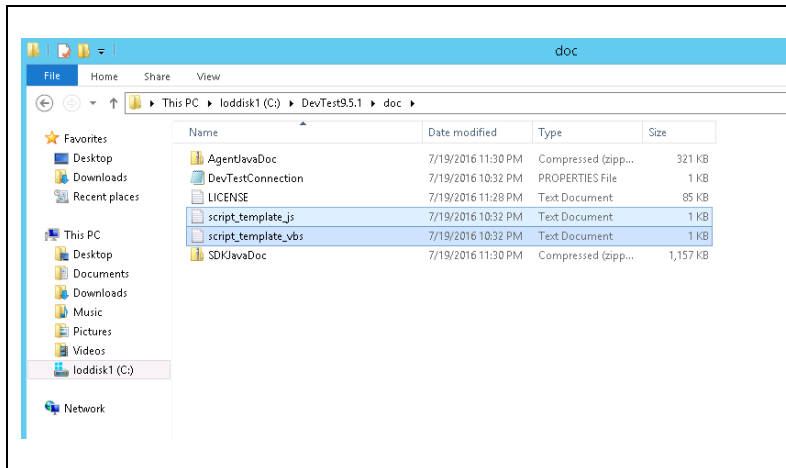


The connection information that we entered during the install gets stored under the Lisa Root → alm-plugin folder as shown below. This file will contain the connection settings; we can edit this file to change the connection settings as shown.

Verification of the install



In the Lisa Root → bin folder, we need to verify if we can see the files InstallationUtility.exe and devtestALMPlugin.dll

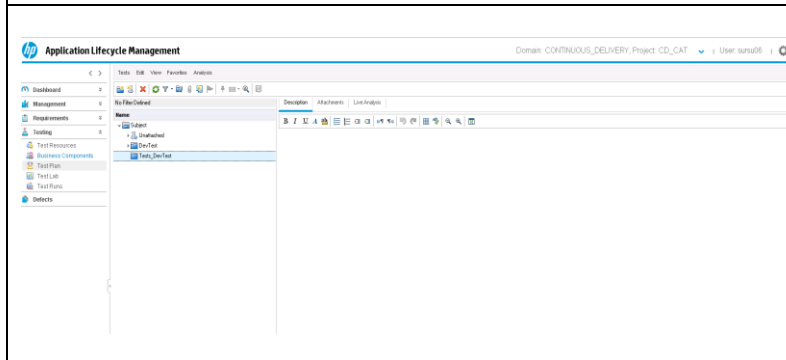


The next thing to verify is to see if the script templates have been generated under Lisa Root → doc folder. The files will be script_template.js.js and script_template_vbs.vbs

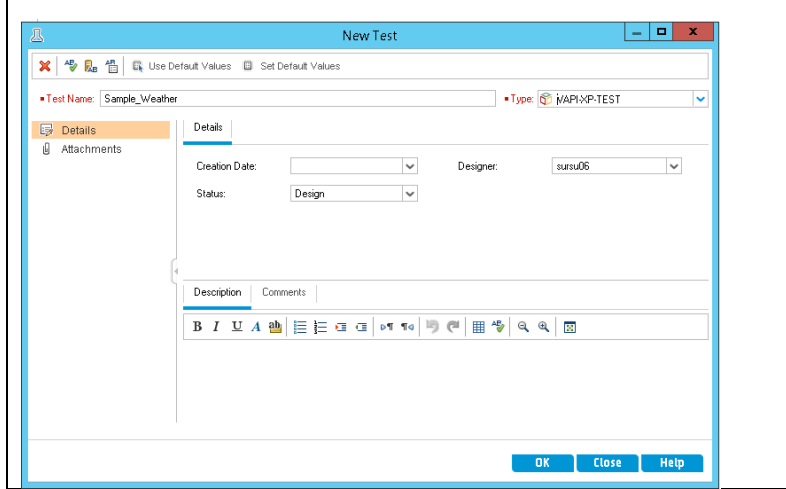
Setup of Tests in ALM

Defining test under Test Plan

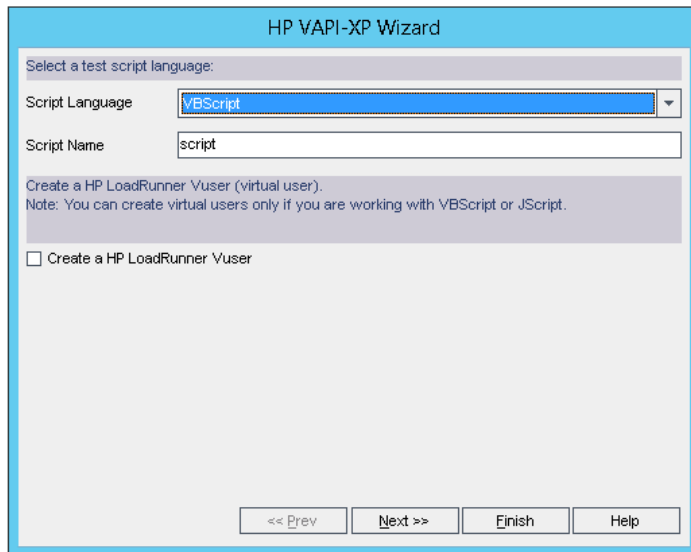
Once these things have been verified, we can start executing tests using the DevTest ALM integration as shown below.



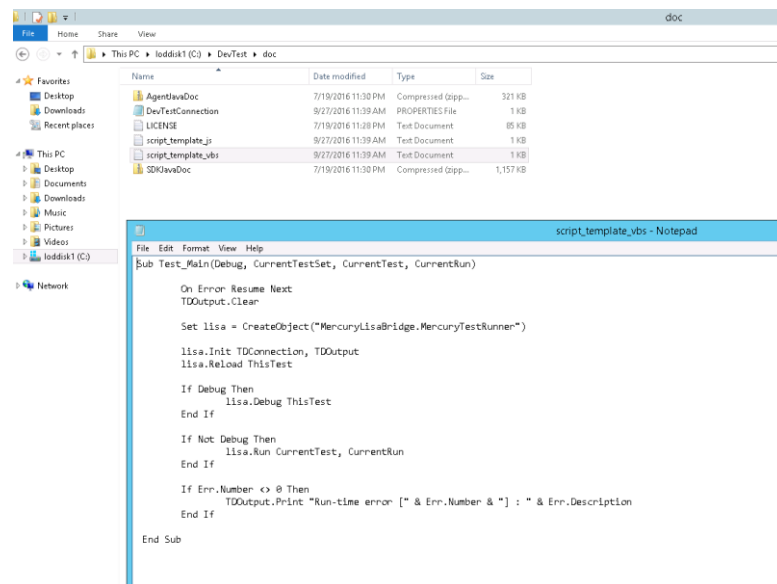
In ALM, Test Plan, create a new Test following the steps below.



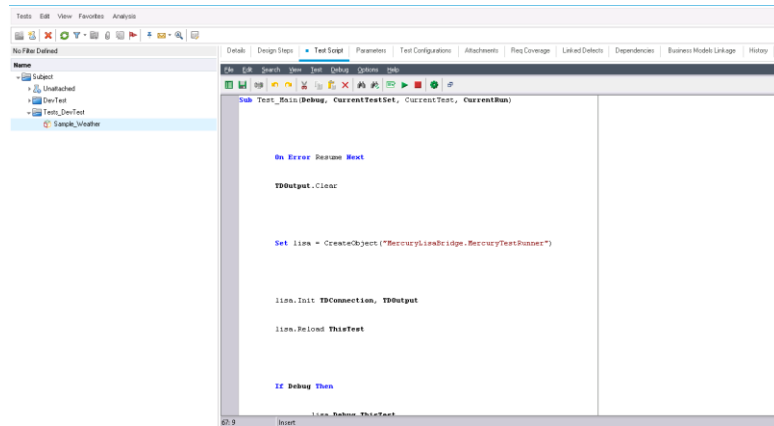
In ALM, New Test screen, select type as 'VAPI-XP-TEST' and enter other details like Test Name.



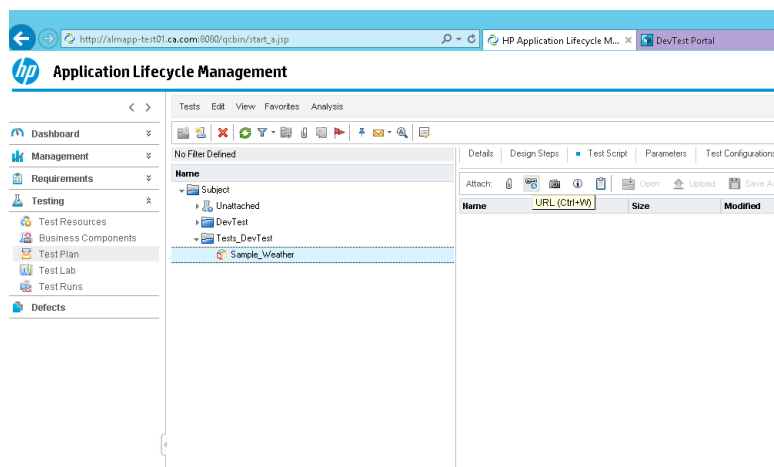
In the VAPI-XP Wizard, we can select the script language of our choice (either Java script or VBScript).



Then, based on the language we choose, we need to go to the doc folder and copy the contents of the corresponding script template file. Based on whether we chose VBScript or Java Script, we need to copy script from the files 'script_template_vbs.vbs' or 'script_template.js.js' respectively.

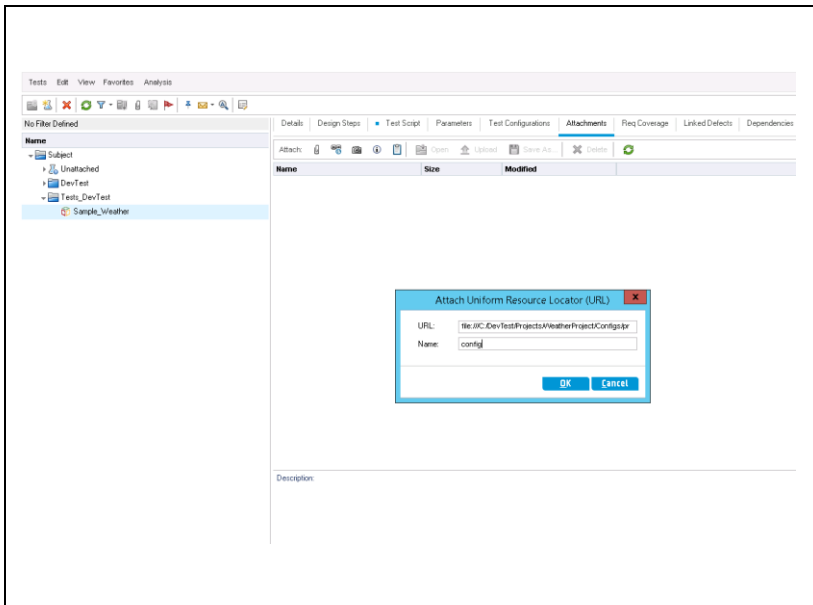
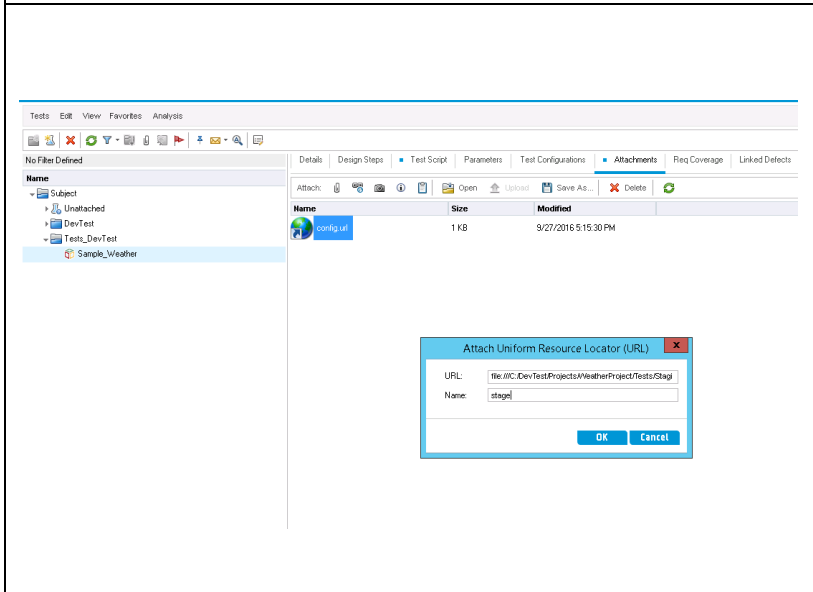
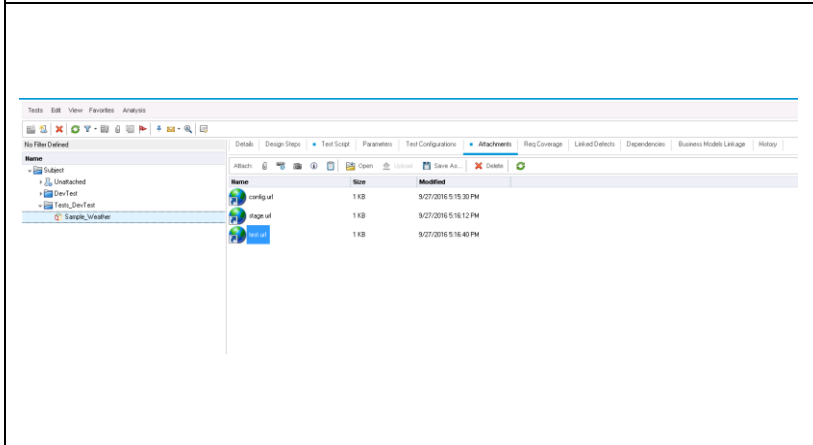


Once we copy the script, we need to paste it in the test case under the Test Script tab (After clearing the default script that is present in the test case) as shown below.

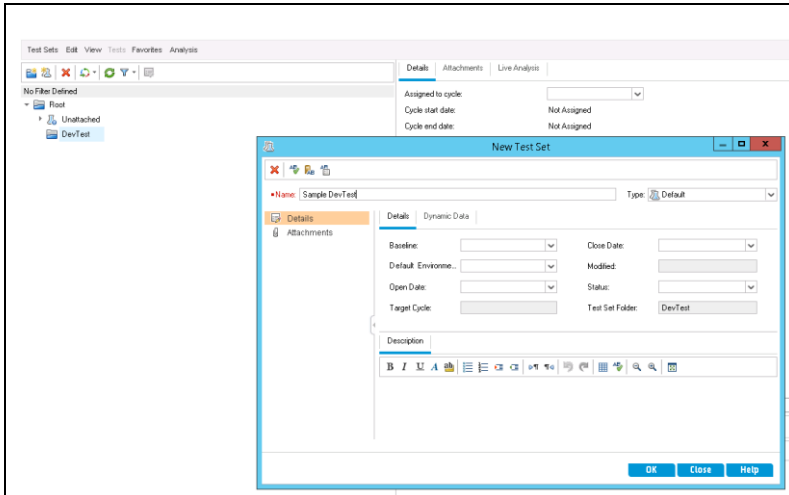


Next, we need to go to attachments tab and add 3 URL attachments as shown below.

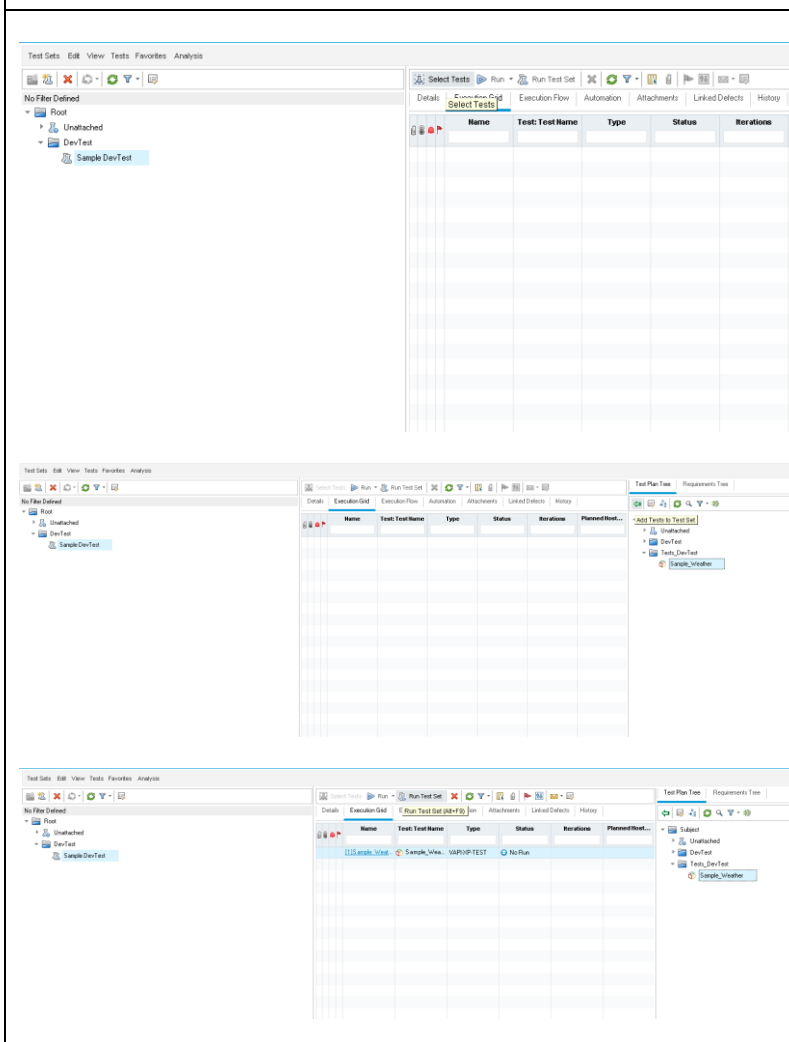
For the purpose of the demo, we have added the below attachments with corresponding names as given below.

	<p>Name – config URL - file:///C:/DevTest/ Projects/WeatherProject /Configs/project.config</p>
	<p>Name – stage URL - file:///C:/DevTest/Projects /WeatherProject/Tests /StagingDocs/Run1User1Cycle.stg</p>
	<p>Name - test URL - file:///C:/DevTest /Projects/WeatherProject /Tests/Weather.tst</p>

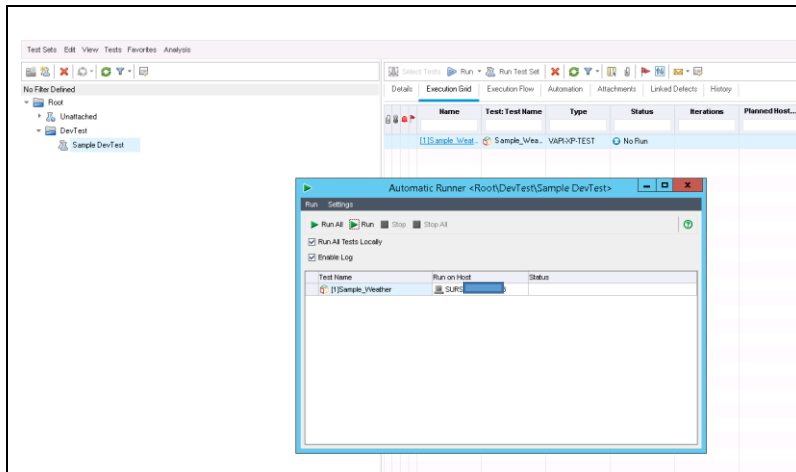
Defining Test Set under Test Lab



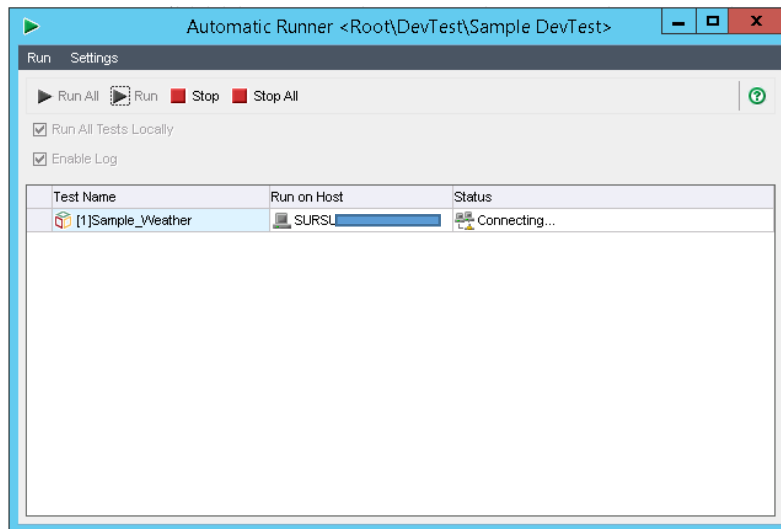
Once the url have been defined, we need to create a new Test Set under Test Lab as shown below.



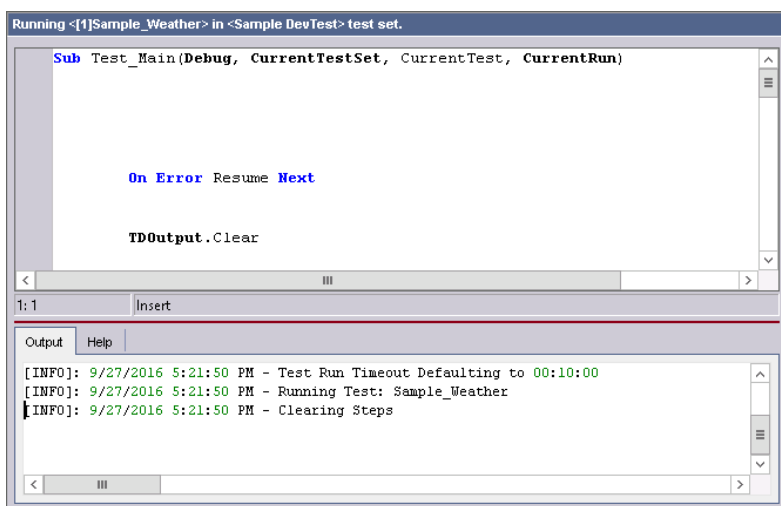
We need to select the new test we have previously created to the test set as shown in the below screens.

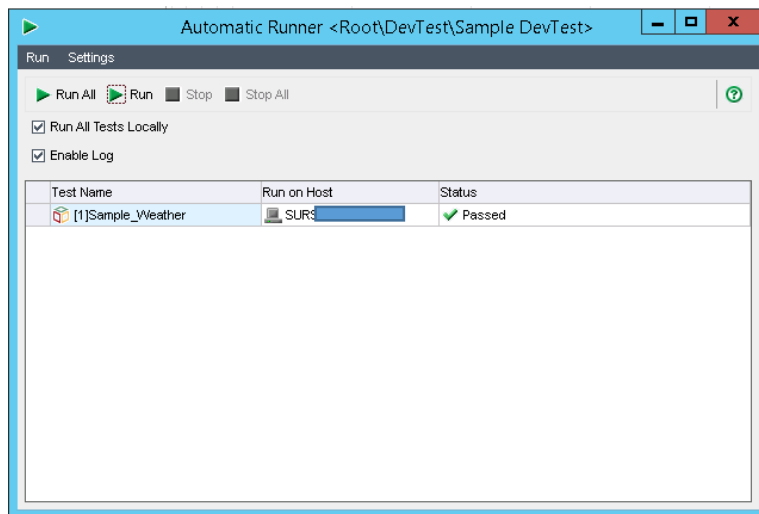


Once that is done, we can click on Run Test Set and select the Host on which to run as shown below.



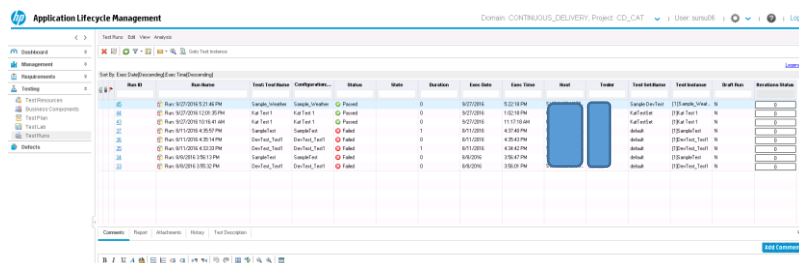
The Test will start executing as shown below after connecting to the host on which to run the test and the result will be shown after the execution is completed.



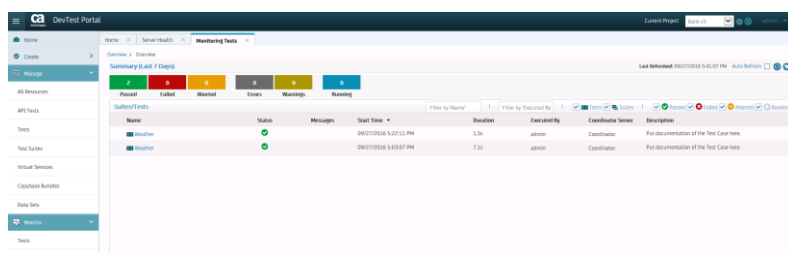


In case the test fails, we can see detailed error in the log file (alm-devtest.log) under Lisa Root → alm-plugin folder.

Viewing the Test Runs



In ALM, under Test Runs, we can see the list of tests run and the result along with other details.



In DevTest also, we can see the details of the tests that got staged via ALM and we can generate the required reports for the executions in DevTest via portal, which offers a number of reports out of box for the users.