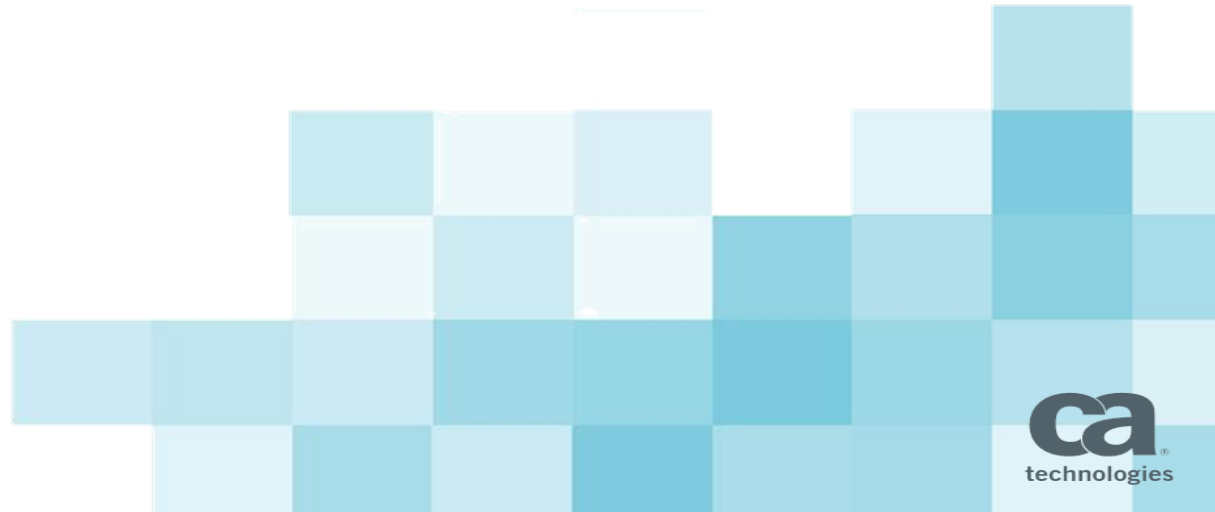


CA Infrastructure Management

CA Product Update for IM Community

November 18, 2014



Agenda

1

CA ENTERPRISE MANAGEMENT

2

CA INFRASTRUCTURE MANAGEMENT VISION

3

IM PRODUCT UPDATES

4

Q&A

For Informational Purposes Only

Terms of this Presentation

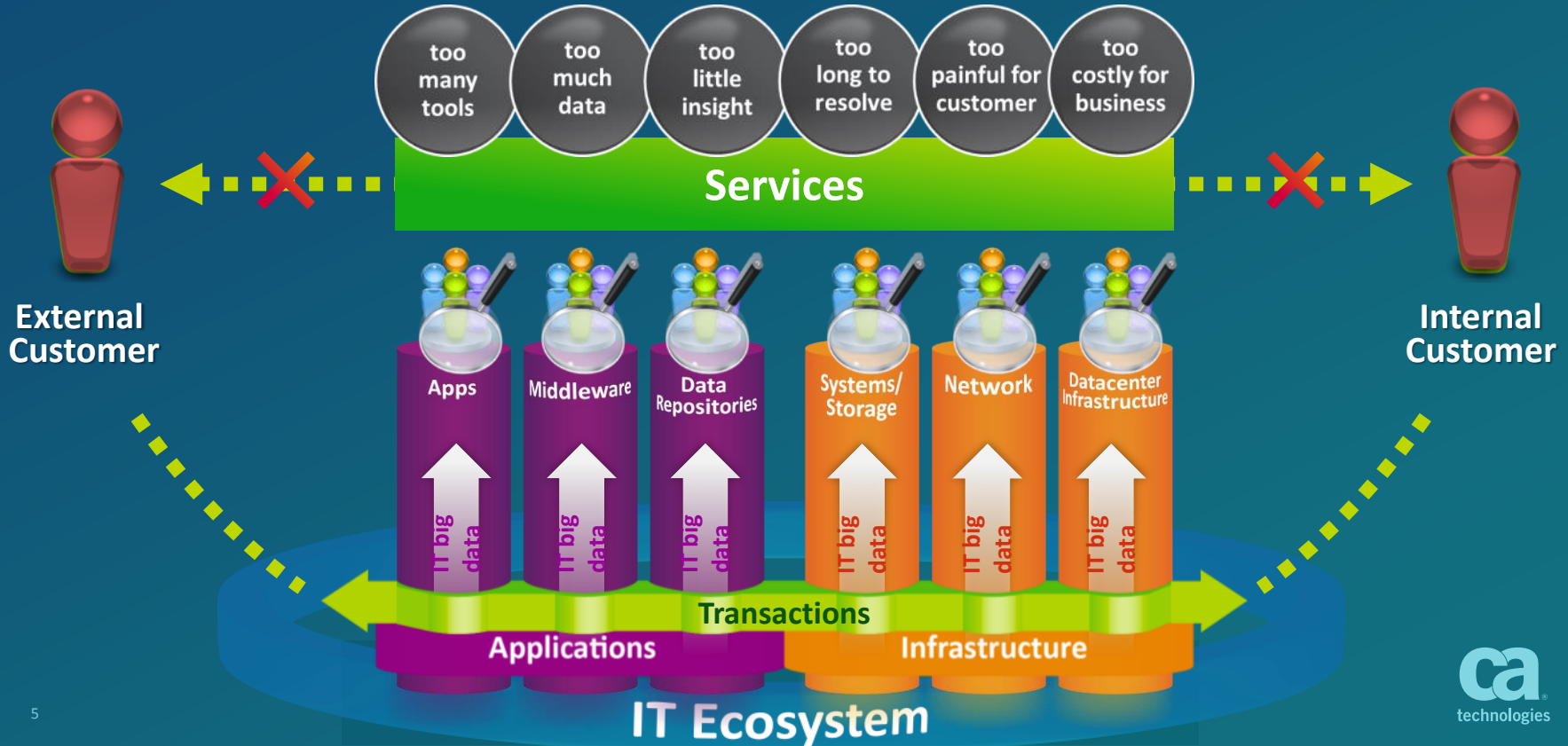
This presentation was based on current information and resource allocations as of August 2014 and is subject to change or withdrawal by CA at any time without notice. Notwithstanding anything in this presentation to the contrary, this presentation shall not serve to (i) affect the rights and/or obligations of CA or its licensees under any existing or future written license agreement or services agreement relating to any CA software product; or (ii) amend any product documentation or specifications for any CA software product. The development, release and timing of any features or functionality described in this presentation remain at CA's sole discretion. Notwithstanding anything in this presentation to the contrary, upon the general availability of any future CA product release referenced in this presentation, CA will make such release available (i) for sale to new licensees of such product; and (ii) to existing licensees of such product on a when and if-available basis as part of CA maintenance and support, and in the form of a regularly scheduled major product release. Such releases may be made available to current licensees of such product who are current subscribers to CA maintenance and support on a when and if-available basis. In the event of a conflict between the terms of this paragraph and any other information contained in this presentation, the terms of this paragraph shall govern.

Certain information in this presentation may outline CA's general product direction. All information in this presentation is for your informational purposes only and may not be incorporated into any contract. CA assumes no responsibility for the accuracy or completeness of the information. To the extent permitted by applicable law, CA provides this presentation "as is" without warranty of any kind, including without limitation, any implied warranties or merchantability, fitness for a particular purpose, or non-infringement. In no event will CA be liable for any loss or damage, direct or indirect, from the use of this document, including, without limitation, lost profits, lost investment, business interruption, goodwill, or lost data, even if CA is expressly advised in advance of the possibility of such damages. CA confidential and proprietary. No unauthorized copying or distribution permitted.

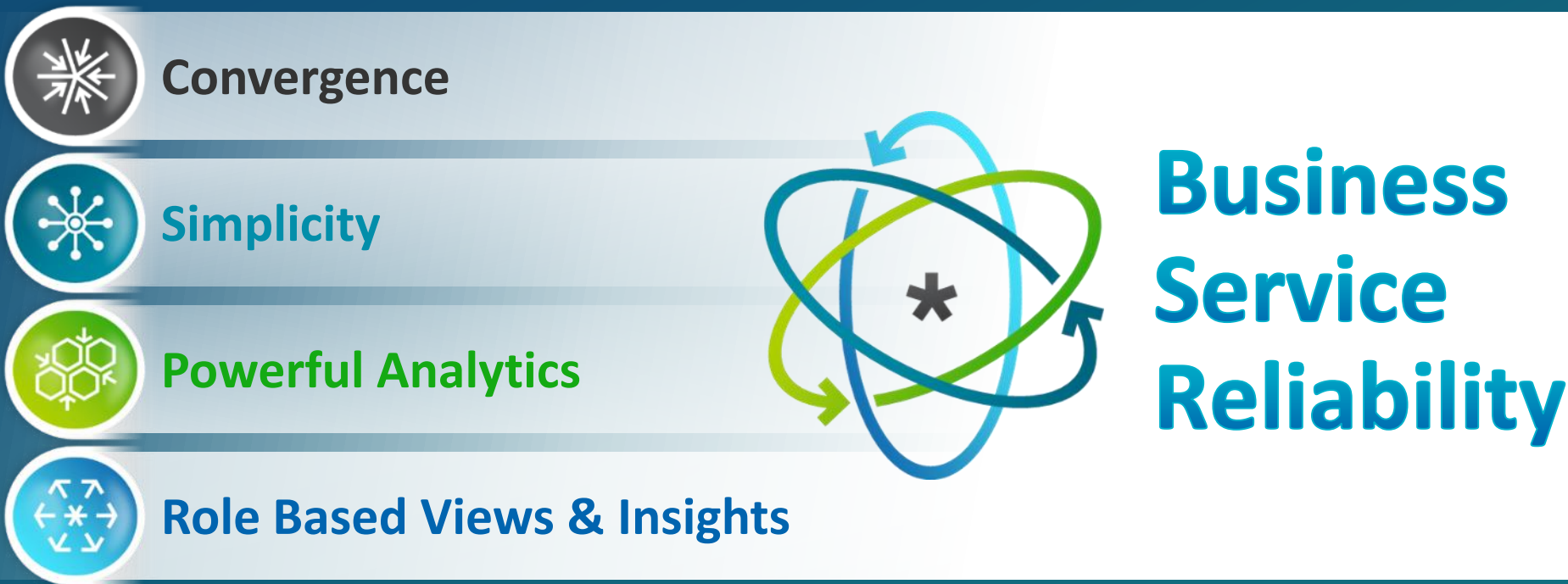
CA Enterprise Management

Business as usual won't get you there

domain availability \neq exceptional customer experience



Stakes are high – so what is required?



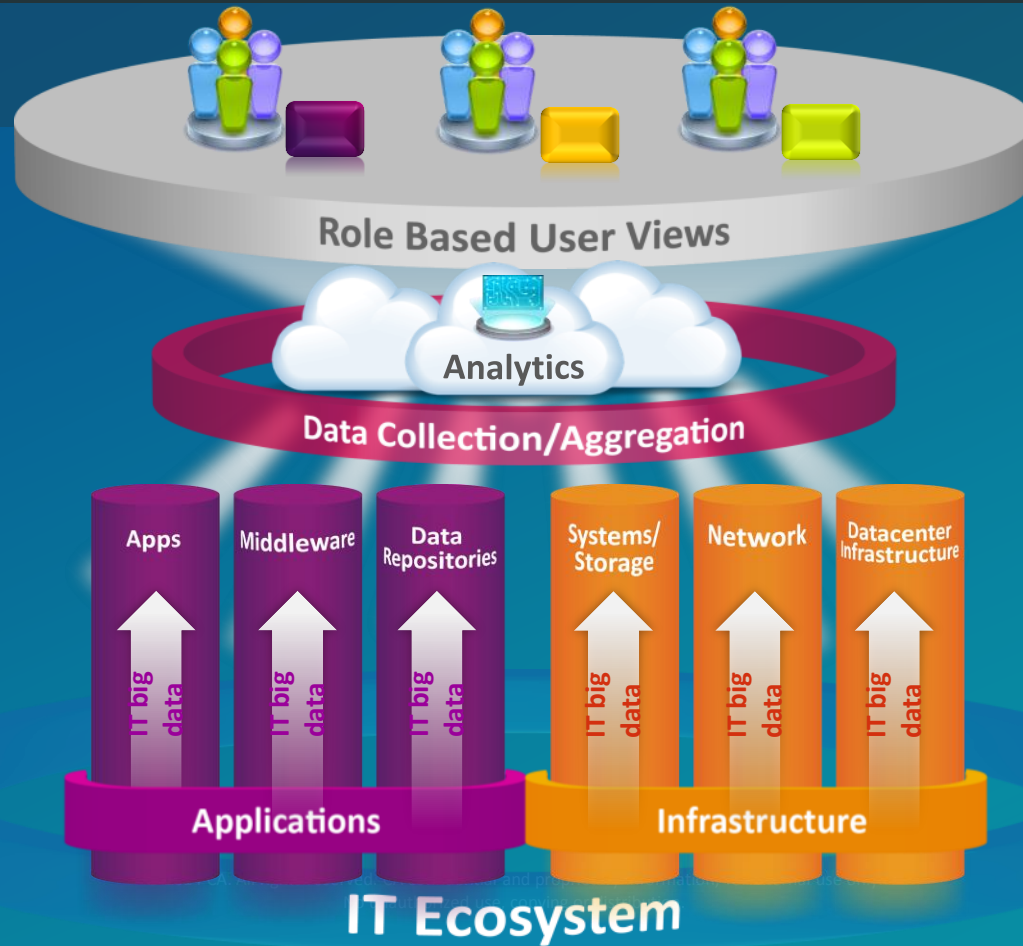
Bringing it all together for a 360 degree view of services

Business Service Reliability = exceptional customer experience



Enterprise Management Solutions from CA Technologies

Focused on Aggregation, Analytics, Relevant Views



CA Infrastructure Management Vision

Vision & Mission: Unified Infrastructure Management

Multi- year Vision

To be the most **powerful, comprehensive** and **easiest, unified** Infrastructure Management solution.

Multi- Year Mission

To provide IT teams, within all sized organizations, the most powerful, comprehensive and unified Infrastructure Management tools, in-context analytics and role-based insights, that are consistently perceived as the easiest to implement and manage so they can deliver high quality services to customers.

Unified Infrastructure Management Evolution

To be the most powerful, comprehensive and unified Infrastructure Management solution

CA Unified Infrastructure Management

Monitoring availability & performance across traditional data center & public cloud environments

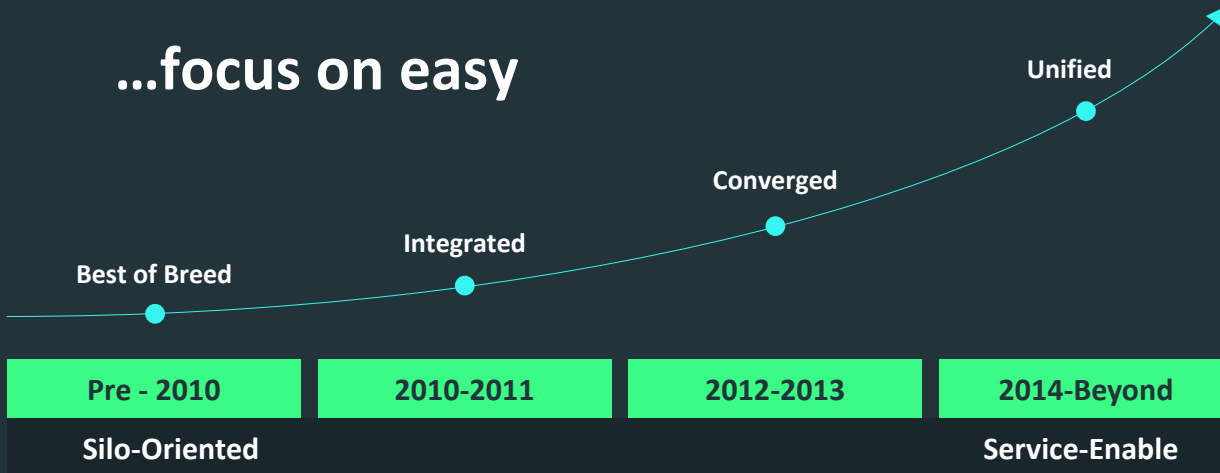
fast deployment

rapid time to value

single, unified solution

future-proofed

...focus on easy



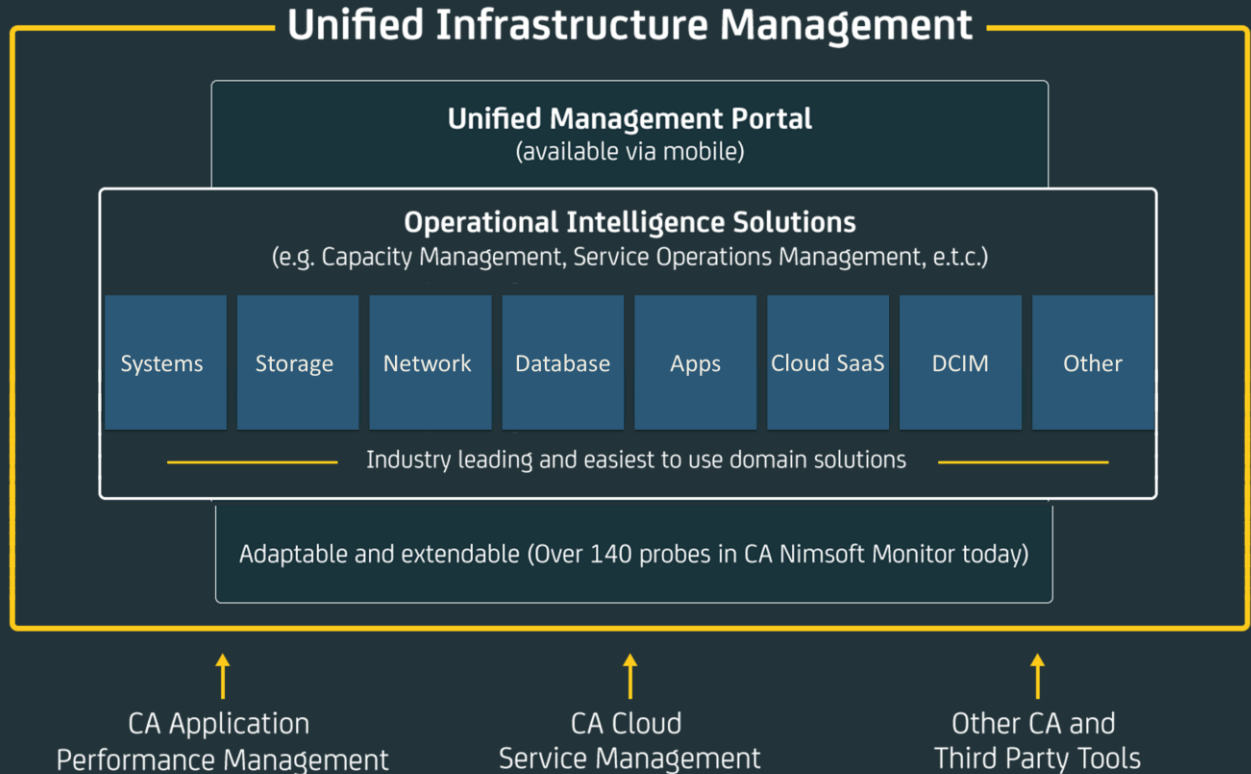
Start small with modular, fast time to value point solution or 'freemium' offer

Scale up by selecting the right level of domain specific capability for the business need

Scale out by adding relevant domain capabilities on modular basis

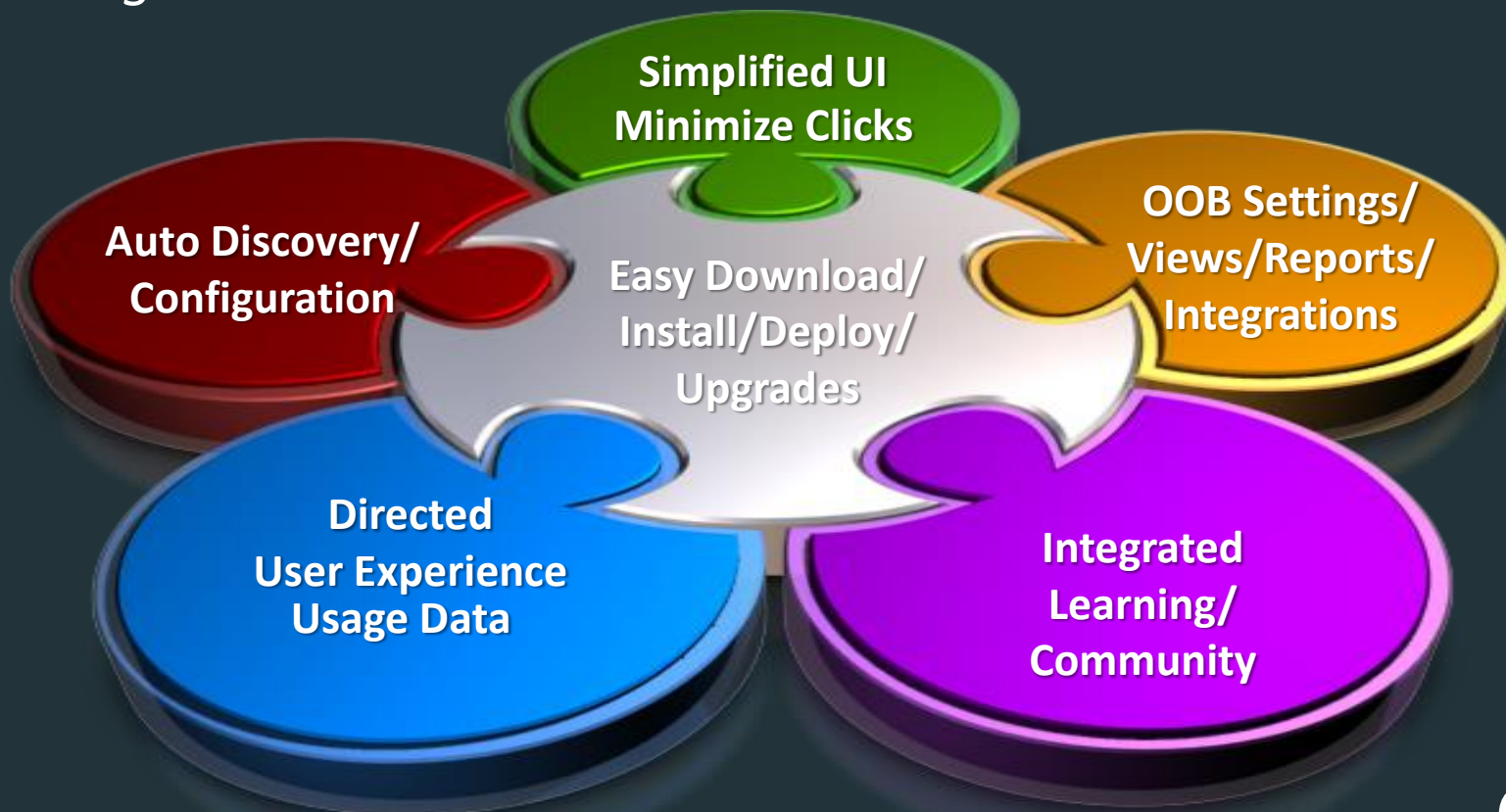
Unified management and UI with role specific views

Apply specific analytics to leverage big IT data and deliver business value



Guiding Principle - Easy

Enabling Business Model Innovation

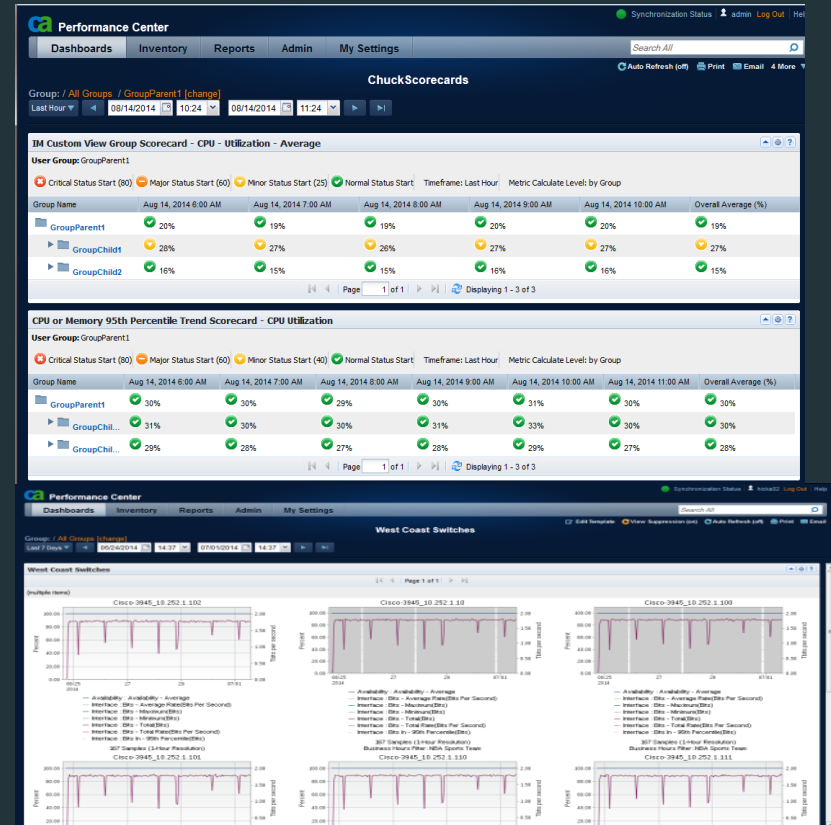


What's New

CA Performance Management/CA Mediation Manager

Focus: Mega Scale & Carrier Grade Network Performance Management

- CA Performance Management 2.3.3/2.3.4
 - Enhanced User Experience
 - New Scorecard Aggregation views
 - On-demand reporting
 - Increased Scale, Performance, Resiliency
 - New on demand data collector load balancing
 - Increased dashboard performance
 - Enhanced data collector to data aggregator communications
- Futures – Performance Management 2. 4 and beyond
 - Support for SDN environments
 - Updated visualization
 - Continue to increase scale, performance, and resiliency
 - Enhanced role controls
 - New OpenAPI for reporting flexibility and data exports



CA Spectrum

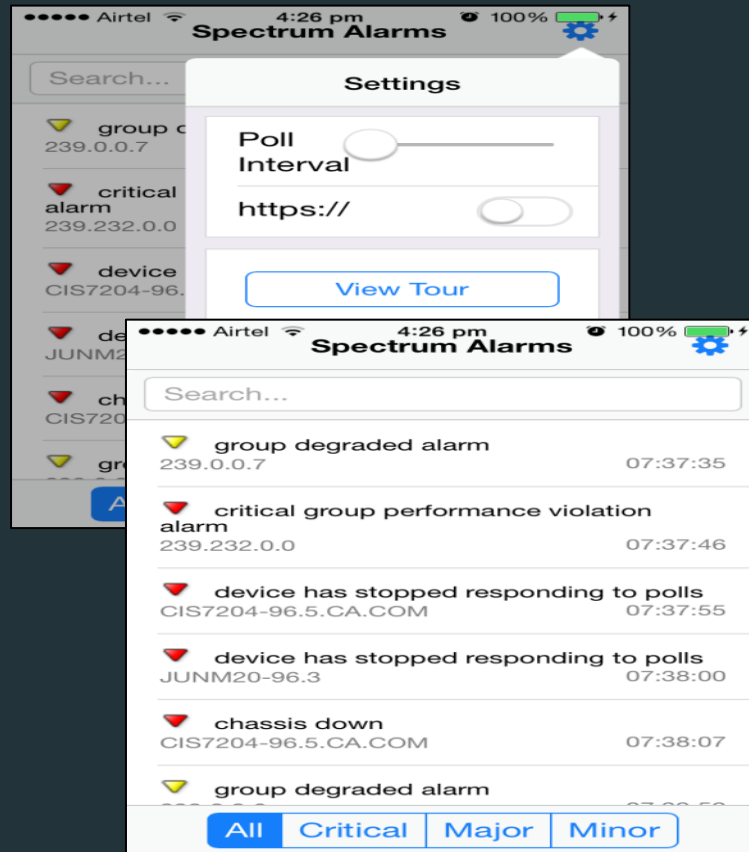
Focus: Continued investment in this strategic product

■ Spectrum 9.4

- 120+ new and updated device certifications
- Enhanced Technology Support
 - Virtual Switching, LACP support, etc.
- New Mobile Interface
- UIM integration for physical servers

■ Futures – Spectrum 9.4.1 & 10.0

- Enhanced UIM integration for virtual servers
- Looking at technologies enabling significantly increased scale while reducing footprint, e.g. 64-bit



CA eHealth

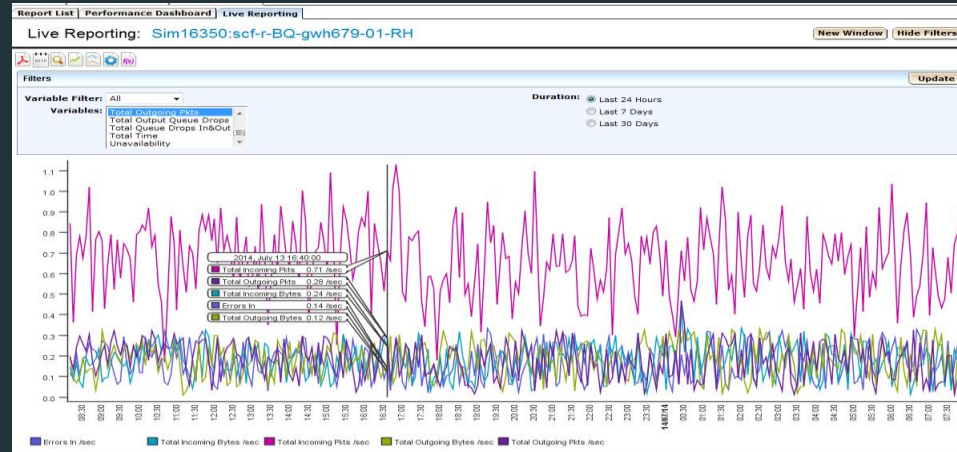
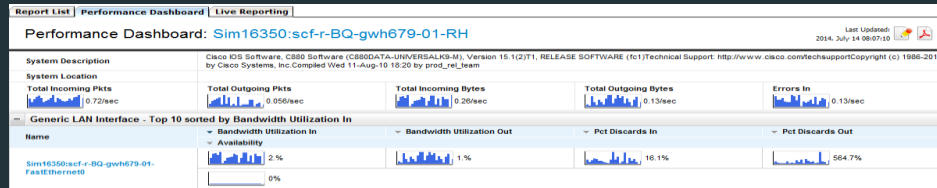
Focus: Continue to ensure customer success

■ eHealth 6.3.2.05 & 6.3.2.06

- 200+ new and updated device certifications (270+ new and updated certifications in last 6 months)
- Support for RHEL 6.5
- Security Updates

■ Futures

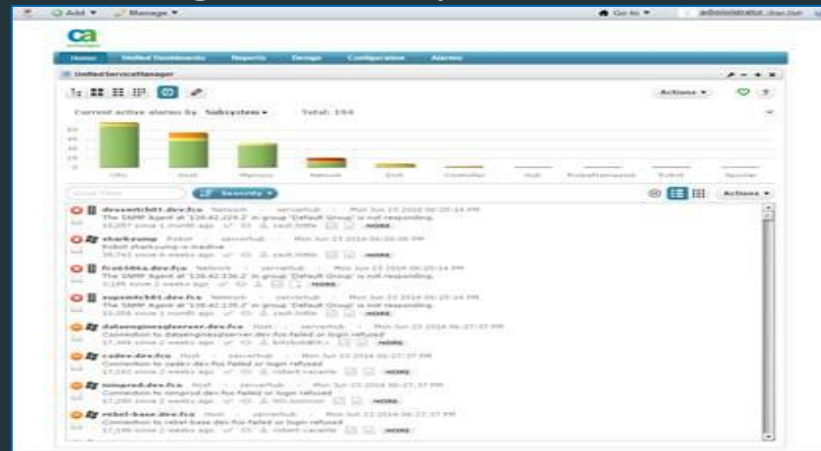
- Focusing on certification process efficiency and decrease turn-around time
- Continue quarterly releases to ensure up to date technology, platform, and security support



CA Unified Infrastructure Management (Nimsoft Monitor)

Focus: Predictive Analytics, improved network management, improved monitoring coverage, easy

- CA Nimsoft Monitor 7.6 & 8.0
 - Improved USM Alarm console
 - HTML5 Dashboard upgrades
 - zLinux monitoring support zLinux monitoring support for zLinux RHEL-6 and zLinux SLES-11
 - Reporting
 - Top-N and At-A-Glance reports that identify items that need attention
- Futures: CA Nimsoft Monitor 8.1+
 - Improved Network Management
 - SNMP Collector parity with IM/PM 2.0
 - Time over threshold: reduce erroneous alarms, define # of violations over a time frame prior to sending an alarm
 - Ability to group by Interfaces and reporting
 - Improved Monitoring Coverage
 - AWS service monitoring
 - Oracle 12



CA Netflow Analysis

Focus: Continued investment in these strategic products

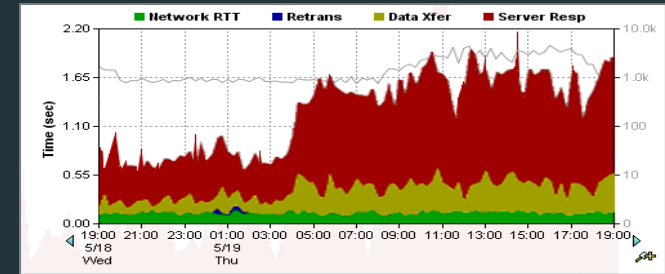
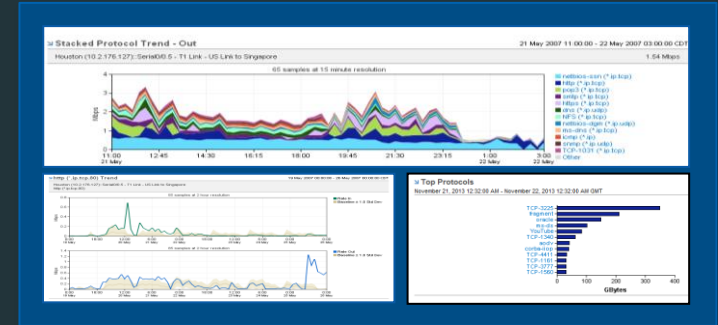
■ NFA 9.2.1

— Updated technology support

- AVC Updated Classifications and IVT Certification
- Flexible Netflow Support for ASA Firewalls
- License Reporting in the UI
- Remapping Improvements

■ Futures

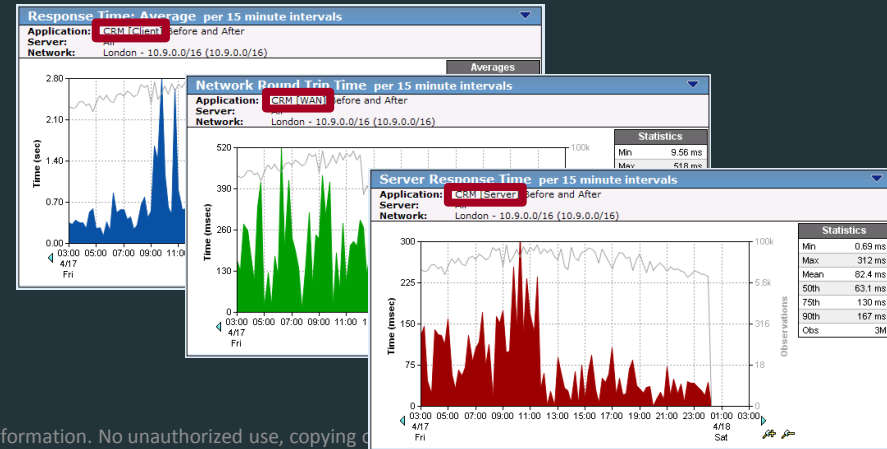
- MSP Reporting Enhancements
- Database Updates
- Site Reporting
- Integration to UIM



CA Application Delivery Analysis & Unified Communications Monitor

Focus: Continued investment in these strategic products

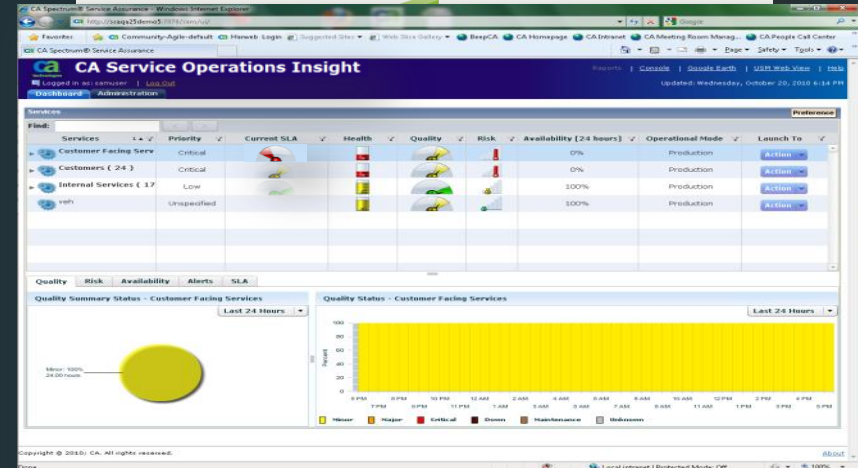
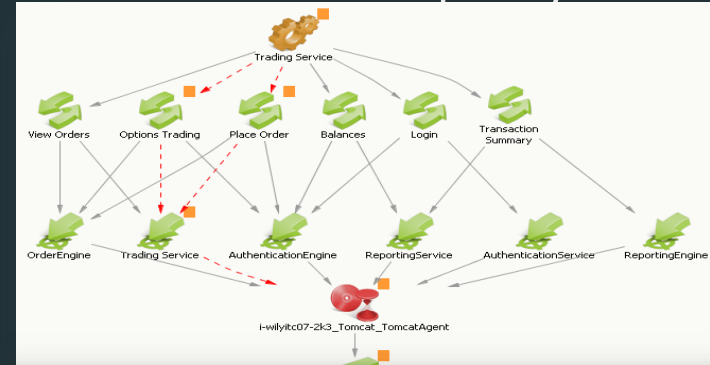
- ADA – Upcoming ADA 10.1
 - Improved performance and capacity
 - Significantly improved data collection rate and reporting capability
 - Longer term data retention
 - Faster time to value through updated OOB configurations
- Futures
 - Platform Updates for MySQL and CentOS
 - Integration to UIM
 - Deep Packet Inspection on MTP for select applications.
- UCM – Upcoming UCM 3.8
 - Enhanced Lync Support for additional payload types
 - Improved MediaNet Support
- Futures
 - Improved Lync Data Collection
 - Next Generation UCM Solution – Combined UIM Probes and UCM



CA Service Operations Insight (SOI)

Focus: Ensuring Customer Success through increased solution quality

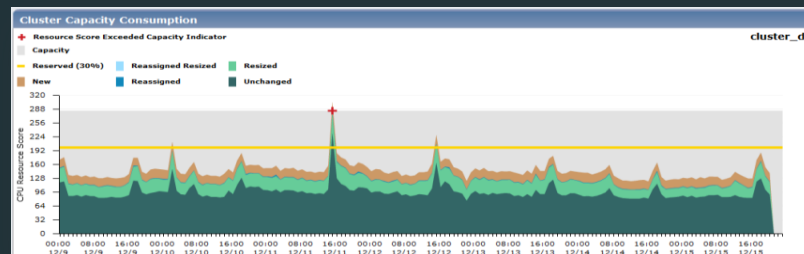
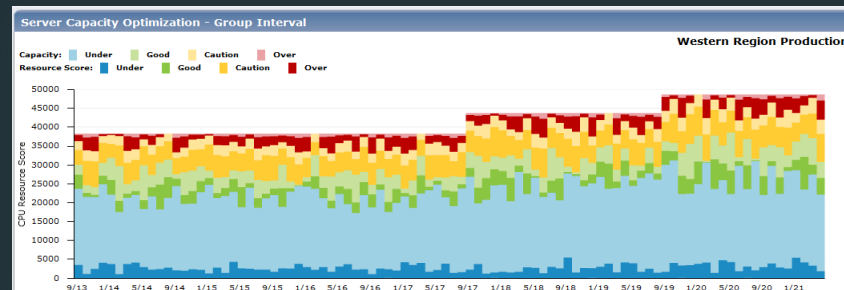
- Quality
 - SOI 3.0 SP1 and SOI 3.1 largely focused on quality, supportability, and enhanced user experience
- SOI 3.2 CU2 released in June
 - Performance Improvements
 - Service Ticketing
 - Automated Service Discovery
 - Automation updates including support for PAM 4.2.1
 - OOB UIM Connector
- Futures
 - SOI 3.3
 - Enhanced integration with Spectrum (global collections to alert queues)
 - Enhanced instrumentation enabling alerts to NOT impact service status (alerts pending clear)



CA Capacity Management

Focus: Leverage advanced analytics for predictive actionable insights

- CCC/VPM 2.5 & 2.6
 - Enhanced User Experience
 - Automated mapping of server configuration to component model library
 - Interactive chart navigation
 - VPM placement results history
 - Increased Scale & Performance
 - Increased performance through partition support and optimized queries/views
 - Broader Integration
 - Native integration with CA UIM (f.k.a. CA Nimsoft)
 - API based VMWare Data Adapter



CA Capacity Management

Focus: Leverage advanced analytics for predictive actionable insights

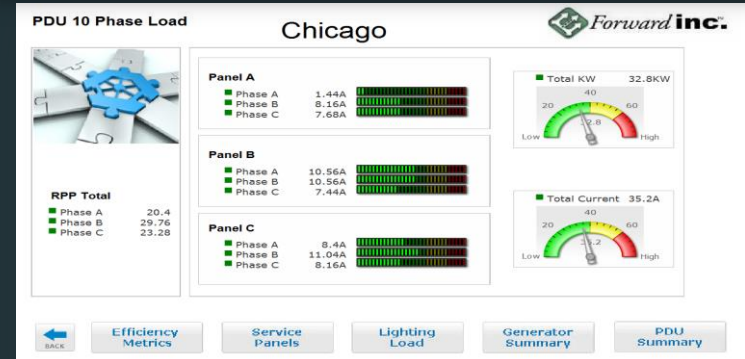
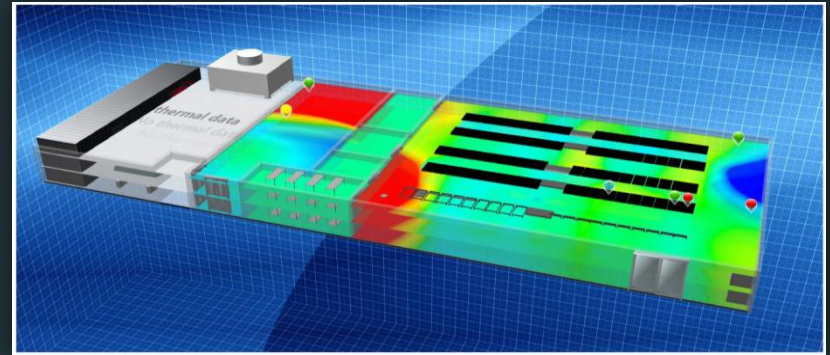
- Futures – CCC/VPM 2.7 and beyond
 - Ease of Use and Enterprise Scalability
 - Converged Capacity Management
 - Integration with CA UIM platform with comprehensive coverage of technology silos (application, network, storage, power, space, cooling, etc.)
 - Constraint based analytics towards business service capacity management
 - Open Data Framework

Business Service	Objects	Profile Confidence	DTT	Primary Constraint	Secondary Constraint	Tertiary Constraint
Managed Services	36			Compute	Storage	Facilities
Online Trading	22			Application	Storage	Facilities
Online Processing	18			Facilities	Storage	Network
Equity Management Se	26			Application	Facilities	Network

CA Data Center Infrastructure Management (DCIM)

Focus: Converging Infrastructure Management with the Data Center

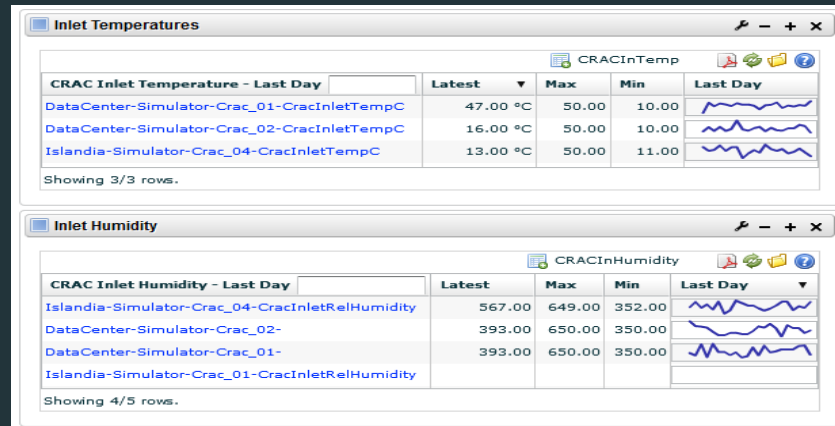
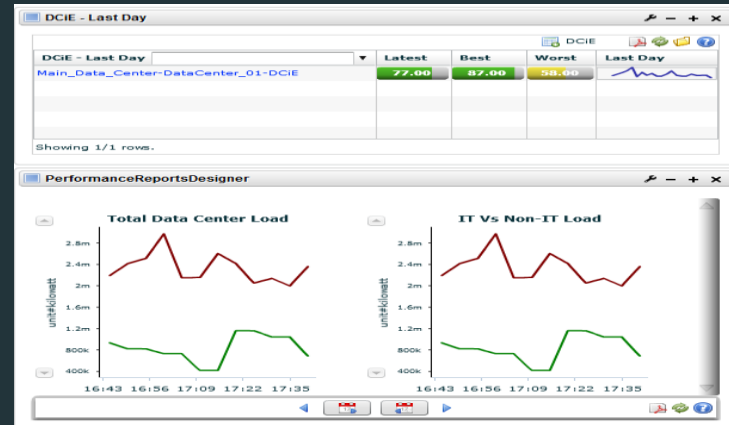
- DCIM 4.7 & 4.8
 - Enhanced User Experience
 - Increased user productivity via export/import views and device templates
 - Enhanced flexibility with device creation for SNMP, WMI, and IPMI
 - Additional Core Features
 - Enhanced multi-tenant capabilities
 - Improved patch panel support



CA Data Center Infrastructure Management (DCIM)

Focus: Converging Infrastructure Management with the Data Center

- Futures - DCIM 5.0 and beyond
 - Ease of use
 - Converged Capacity Management via integration with CA UIM platform
 - Broader integration with BMS and service management tools.
 - Enterprise Scalability
 - Open API framework





Q & A