

Paving the Pathway from Mainframe to NonStop

Larry Schmidt, HP- Enterprise Services

Session # - 12A

Date, time - October 13, 2009 - 11:50 AM

Paving the Pathway...

Purpose

This session discusses a strategy for re-architecting and re-platforming mainframe based applications to enable them to take advantage of NonStop's superior platform at a much lower cost of ownership.

This strategy features:

- Automated harvesting of business assets to enable modernization;
- Development of theses assets using a proven model-driven development environment
- Testing of these new assets using automated testing tools.

Upon completion of this session, the participant will see a Pathway from Mainframe to NonStop.



Paving the Pathway...

Upon completion of this session the participant will:

- Understand how legacy assets can be harvested and modernized through the use of the EvolveWare S2T technology
- Gain an appreciation for the Model Driven Development capabilities of CA Gen and it's capabilities to support the NonStop platform
- Learn how Quality Testing is easily completed on the new modernized application
- Understand a viable migration pathway from Mainframe to NonStop



3 26 October 2009

Paving the Pathway...

Agenda

Introduction
 The Call for Action
 Options for Re-platforming
 Introduction to "the Pathway"
 Enabling technologies
 The Pathway paved
 Summary



4 26 October 2009

Introduction



HP – Enterprise Services





Communications


Consumer Industries & Retail


Energy


Financial Services


Government


Healthcare



Manufacturing


Transportation

EDGE/EMEA 2009
October 11-13, 2009
Amsterdam

Introduction

HP-ES – Beliefs



EDGE TECHNOLOGIES AND ACCESS WILL EXPLODE

WHERE, HOW, WHEN AND BY WHOM WORK GETS DONE IS SHIFTING

LEGACY SYSTEMS AND PROCESSES ARE BARRIERS

GLOBALIZATION WILL ACCELERATE

BUSINESS ECOSYSTEMS WILL DOMINATE

EDGE/EMEA 2009
October 11-13, 2009
Amsterdam

The Call to Action

Why modernize?

- Legacy applications tend to be rigid, not able to be easily deployed to lower cost enabling technologies
- Applications must now represent business policy at a service level and enable extending that business policy to the business' ecosystem
- Mainframe knowledge is shrinking, skilled individuals are retiring, universities are not producing a skilled workforce
- Acquisitions are occurring, options are shrinking
- Software and license costs continue to climb
- The pressures for Greener IT are becoming a reality



7 26 October 2009

Introduction to “the Pathway”

Statement of Strategy:

Leverage and promote HP's NonStop platform as a viable “alternative” Mainframe platform



Introduction to “the Pathway”

Gold Standard of Availability

- 24/7 application availability out-of-the-box
- Proven to run over twenty years without unplanned outages
- 99.999% **application** uptime, 99.99999% system uptime

Massively Expandable

- From 2 to 4,080 processors
- Petabytes of storage

Open, Secure Platform

- Standards and open source support on a highly reliable platform

Effortlessly handles the world's most demanding, transaction-intensive applications

Unrivalled Fail-Safe Data Integrity

Approximately one-half the TCO of the IBM zSeries mainframe



EDGE EMEA 2009
October 11-13, 2009
Amsterdam

Introduction to “the Pathway”



EDGE EMEA 2009
October 11-13, 2009
Amsterdam

Introduction to “the Pathway”

Challenges:

- Porting code and data from the Mainframe requires significant manual effort to enable the business functionality
- Emulation does not easily enable innovation
- Porting to the “native” NonStop platform provides the best performance that can leverage the full features of this platform...



“What if?”



Introduction to “the Pathway”

Utilize the NonStop platform with its robust fault-tolerant capabilities to service the Mainframe processing requirements for the enterprise.



Leverage harvesting software to capture and forward engineer the mainframe code base.



Utilize Model Driven Development to port and re-architect the business rules into the native NonStop and Pathway technologies.

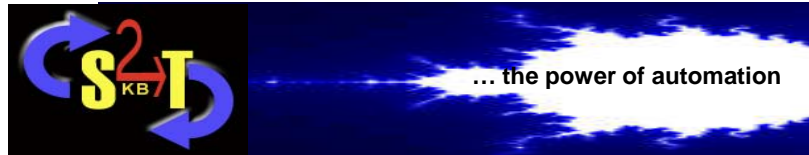


Employ testing strategies which leverage automated



Enabling Technology

EvolveWare



Any **S**ource **2** Any **T**arget

EDGE/EMEA 2009
October 11-13, 2009
Amsterdam

Enabling Technology



**Integrated
Modeling
Environment**



**Scalable
Repository
Environment**



**Multi-Platform
Production
Environment**

CA Gen is the only Model-Driven Development environment that supports native NonStop!



EDGE/EMEA 2009
October 11-13, 2009
Amsterdam

Enabling Technology



15 26 October 2009

The Pathway Paved

Step 01 - Harvest legacy assets using EvolveWare's Legacy Rejuvenator

Step 02 - Perform first step of Modernization using EvolveWare's Modernization Console

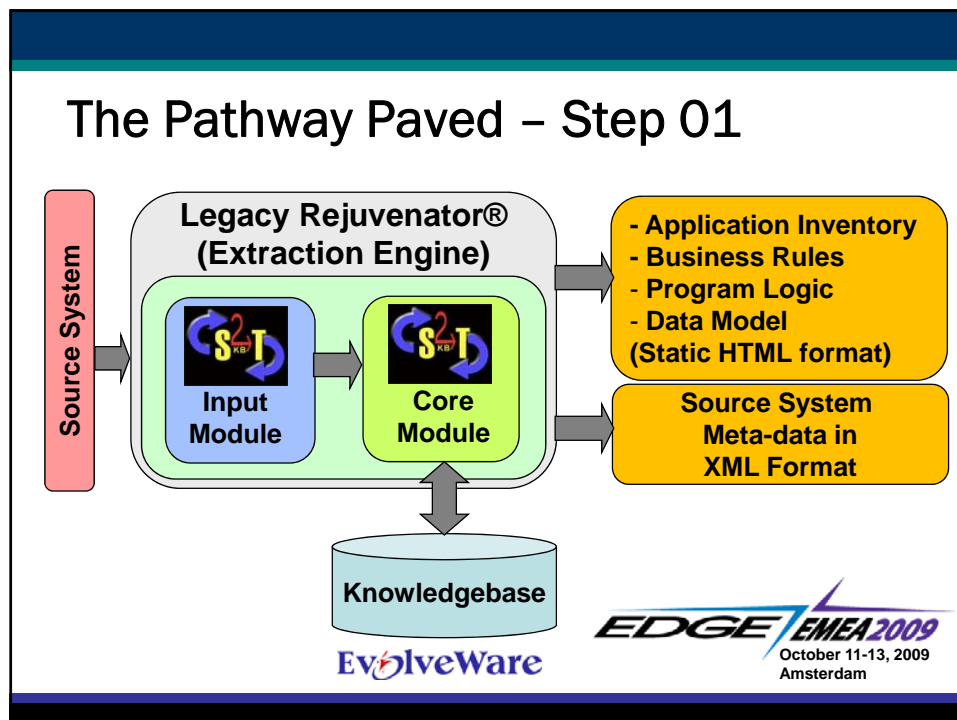
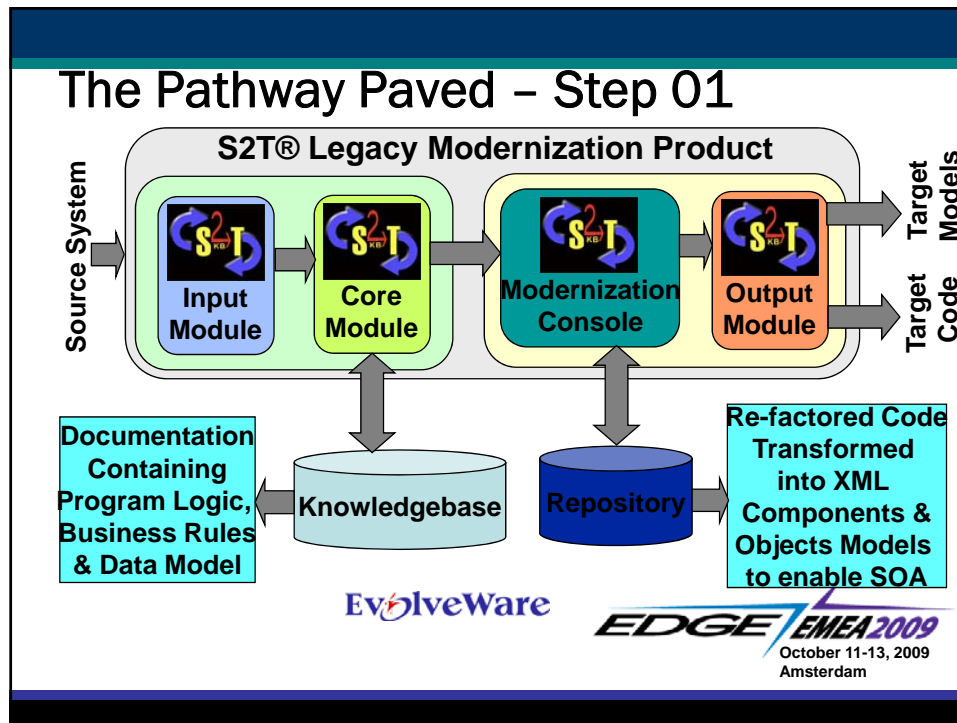
Step 03 - Design, Develop and Test Application using CA Gen

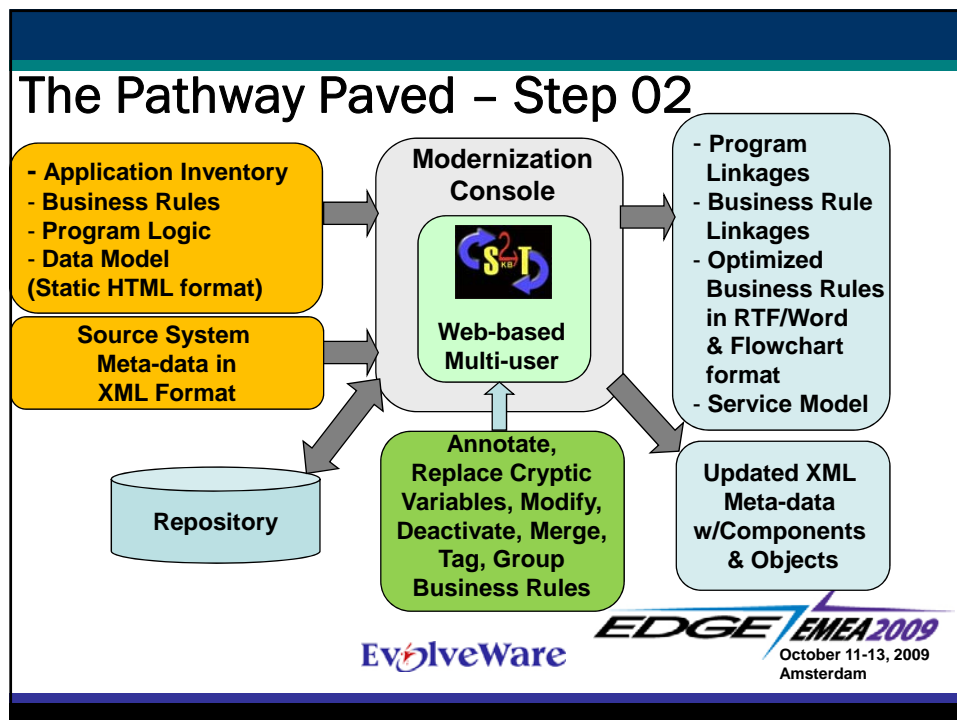
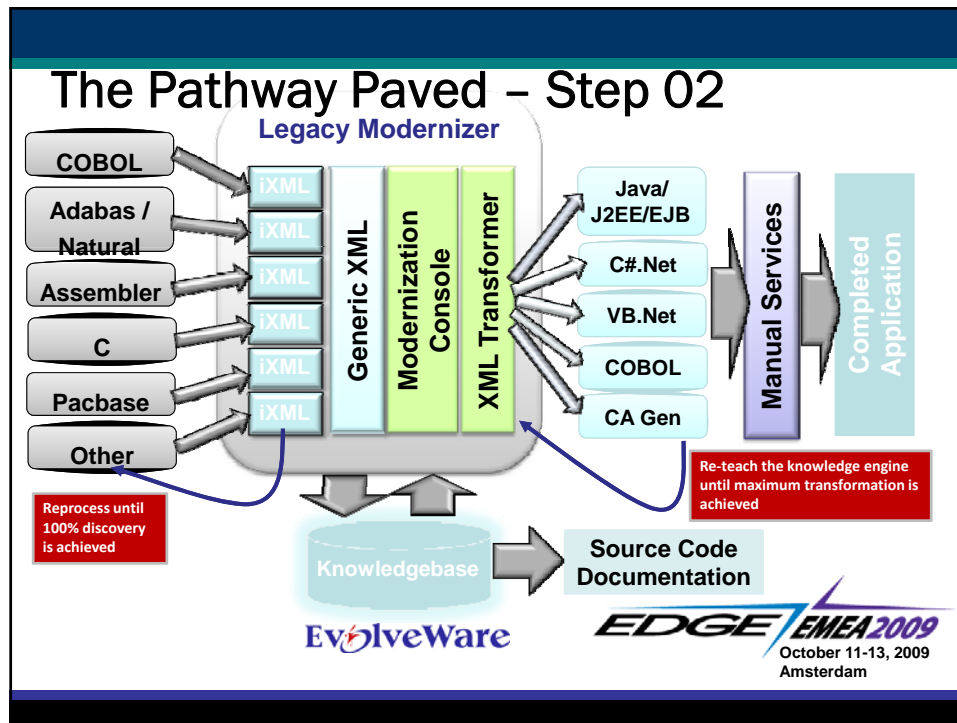
Step 04 - Generate and deploy application using CA Gen's NonStop port

Step 05 - Enhance testing using Quality Center

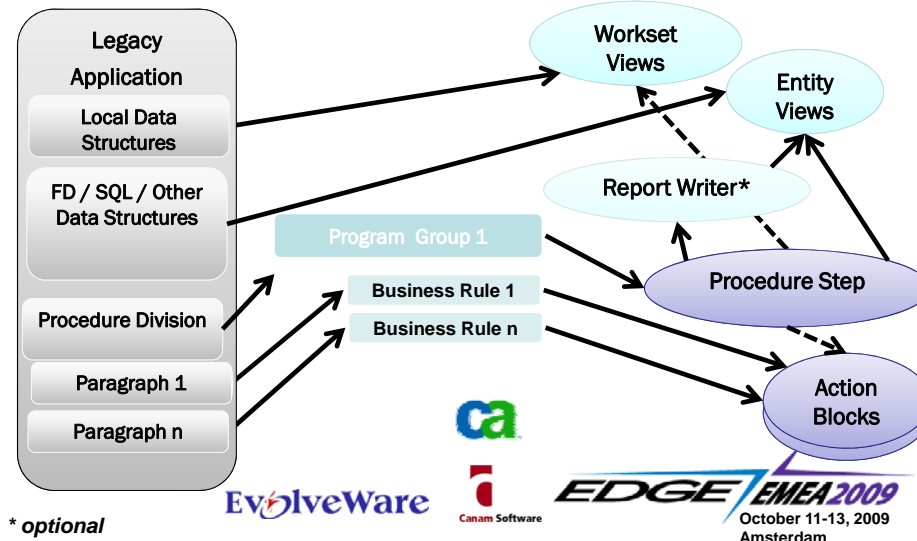


16 26 October 2009





The Pathway Paved – Step 02



The Pathway Paved – Step 03

Speed delivery and maintenance of high-performance, scalable applications

100% Code generation for NonStop, z/OS, Unix, Linux, Windows, J2EE, .NET

Model-driven development environment

Transition to new platforms and technologies without rewriting code

Leverage existing skills to deliver new technologies

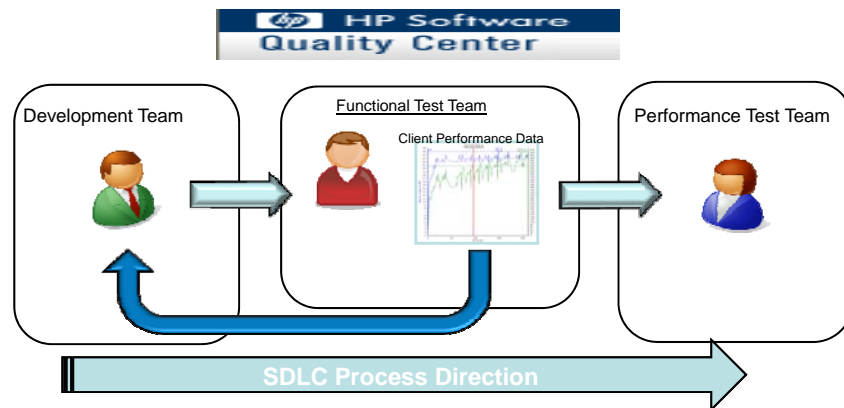
Reduce risks of implementing new technologies, such as J2EE, .NET and Web Services/SOA

Modernize legacy applications



EDGE EMEA 2009
October 11-13, 2009
Amsterdam

The Pathway Paved – Step 05



Regression testing using Citrix interface to QuickTest Pro
 Functionality testing using Windows Clients to QuickTest Pro
 Performance testing using LoadRunner/Citrix

EDGE EMEA 2009
 October 11-13, 2009
 Amsterdam

23 26 October 2009

Summary



EvolveWare



EDGE EMEA 2009
 October
 Amst

24 26 October 2009

Questions?



EDGE **EMEA 2009**
October 11-12:
Amsterdam