

[Fortify] Compliance is a methodology designed by Prevalent Networks to deploy and support Symantec's Control Compliance Suite (CCS). Prevalent Networks has worked closely with Symantec to create the [Fortify] Compliance methodology to help ensure project success.

Most organizations take an ad-hoc approach to compliance. [Fortify] Compliance bundles the required steps to deliver a tailored IT compliance automation solution.

Regulatory Content:

SOX	PCI DSS	FISMA
NERC	Basel II	GLBA
J-SOX		

Framework Content:

CobiT
ISO 17799
NIST SP800-53

The following steps are taken **PRIOR** to the purchase of CCS:

1) Compliance Policy Review

Prevalent will work with you to identify regulatory compliance, frameworks, internal requirements, and automation goals.

2) Current State Analysis

Prevalent will survey the company's compliance stakeholders to determine, your company's compliance process ownership and compliance maturity.

3) Power Up

Prevalent will configure a CCS environment on-site and allow you to test any or all of the CCS compliance modules. At the conclusion of the PowerUp you will receive a sample compliance readiness report.

4) Control Compliance Suite Licensing Recommendation

Based upon the outcome of the Compliance Policy Review, Current State Analysis, and PowerUp, Prevalent will recommend CCS architecture, modules, and associated licensing.

The following steps are taken **AFTER** the purchase of CCS:

5) Rapid Technical Deployment

Prevalent Networks will leverage industry, Symantec, and Prevalent best practices to deploy CCS technology into your environment.

6) Policy Integration and Automation

Prevalent will complete the following steps as part of the integration:

- Policy Development
- Console Configuration
- Procedural Workflow Development
- Customized Queries and Reporting
- Policy Mapping
- Role Based Access

7) Symantec Control Compliance Suite Virtual, Classroom, or Custom Training

Symantec CCS training is invaluable for those tasked with managing the CCS environment on a daily basis. Classes are held regularly online, at Symantec training facilities across the globe, or on-site.

8) Documentation, Turnover, & Knowledge Transfer

9) 90, 180, and 360 Day Health Check

These health checks enable Prevalent Networks to ensure the CCS environment is running optimally and that your organization is realizing the most value from the solution.

About Control Compliance Suite

The Symantec Control Compliance Suite is an integrated set of technologies that enable the key processes needed to achieve and maintain IT compliance.

Key Benefits of Control Compliance Suite (CCS) software:

- Automation of the management of deviations from technical standards provides the ability to remediate any misconfigurations.
- Streamlining the creation, mapping, and distribution of written policies and collects evidence of compliance via assessment capabilities.
- Gathering permissions on data, provides a consolidated view of entitlements, and enables approval workflow.
- Providing rich regulatory and framework content and facilitates creation, distribution, and analysis of manual assessments.



Control Compliance Suite Modules

Standards module

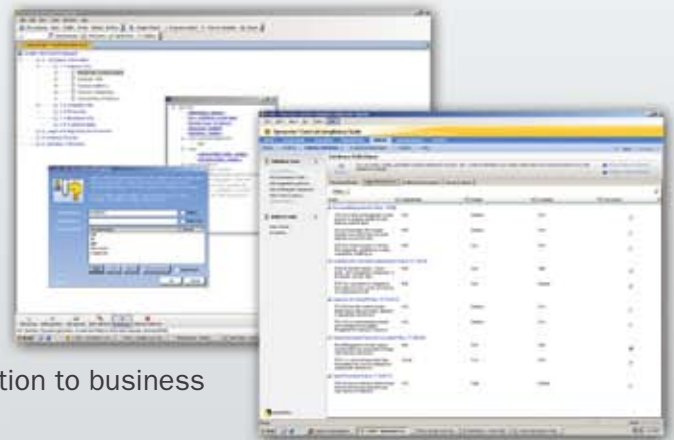
The Standards module automates the management of deviations from technical standards and makes it possible to remediate misconfigurations.

Policy module

The Policy module assists with defining and mapping policies to best practices, frameworks, and regulations, and identifies overlaps in control objectives to reduce duplicative assessment efforts.

Entitlement module

The Entitlement module gathers effective permissions on data from across the enterprise, translates those permissions into a consistent human-readable format, associates management classification to the data, and electronically routes the information to business owners for access approval.



Response Assessment module (RAM)

The Response Assessment module automates the assessment of non-programmatic controls. RAM manages the manual assessment process from questionnaire creation and distribution to analysis of response data.

Prevalent Networks

30 Technology Drive
Warren, NJ 07059
877 - Prevalent
sales@prevalent.net

