

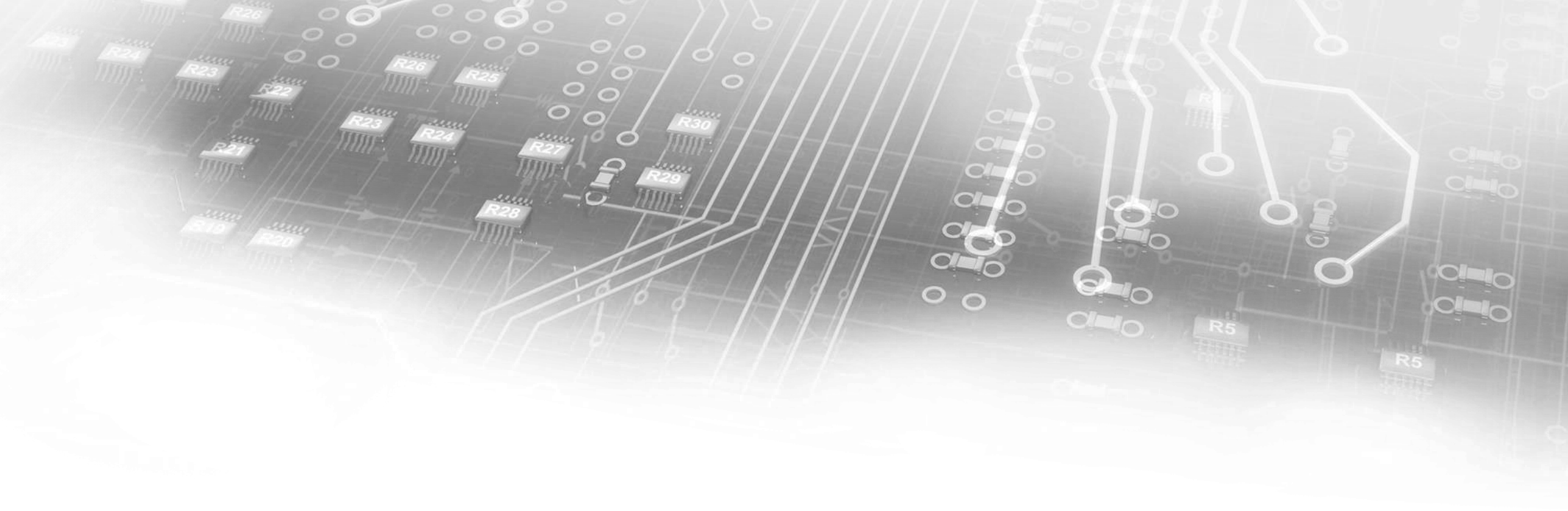


Test Data Manager Deployment Architecture

Scott Schmitz

October 4, 2019



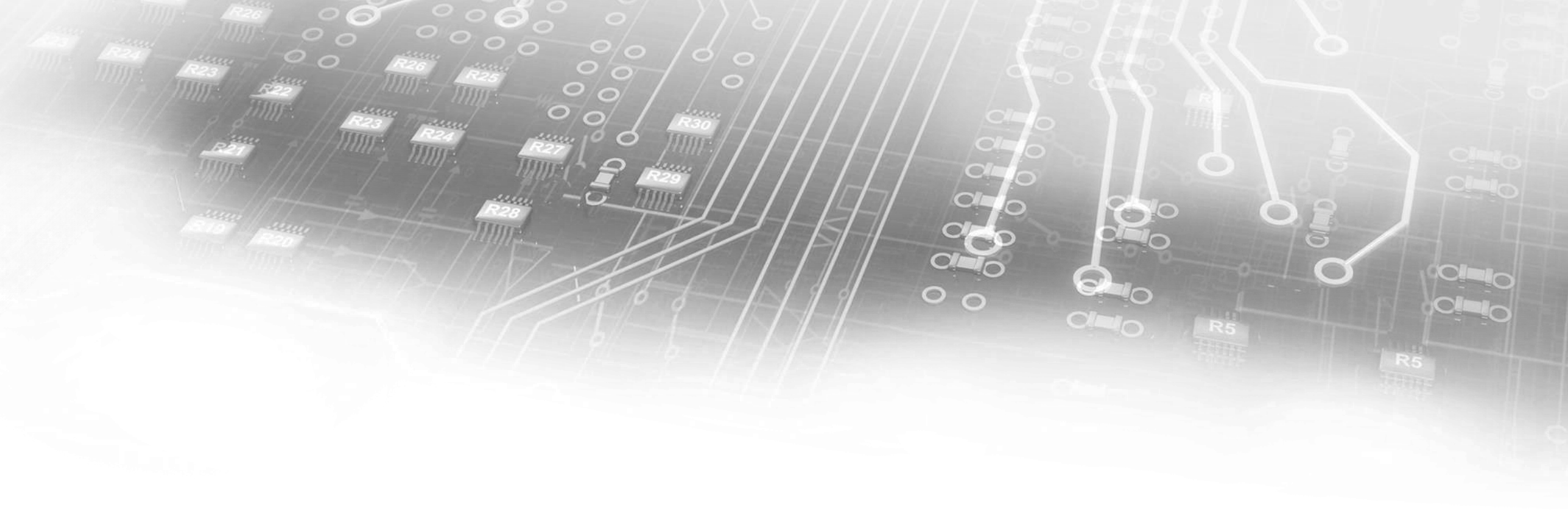


Pre-Requisites



References

- Broadcom CA Test Data Manager TechDocs
 - <https://techdocs.broadcom.com/content/broadcom/techdocs/us/en/ca-enterprise-software/continuous-testing/test-data-management/4-8-1.html>
- Sample Deployment Architectures
 - Inquire from your Broadcom Continuous Testing PreSales Consultant



Sample Architectures



Simple Architecture – small team / Proof of Concept (POC)

Server (medium usage, up to 5 concurrent users)

OS: Windows Server 2008 R2 Standard Edition or higher

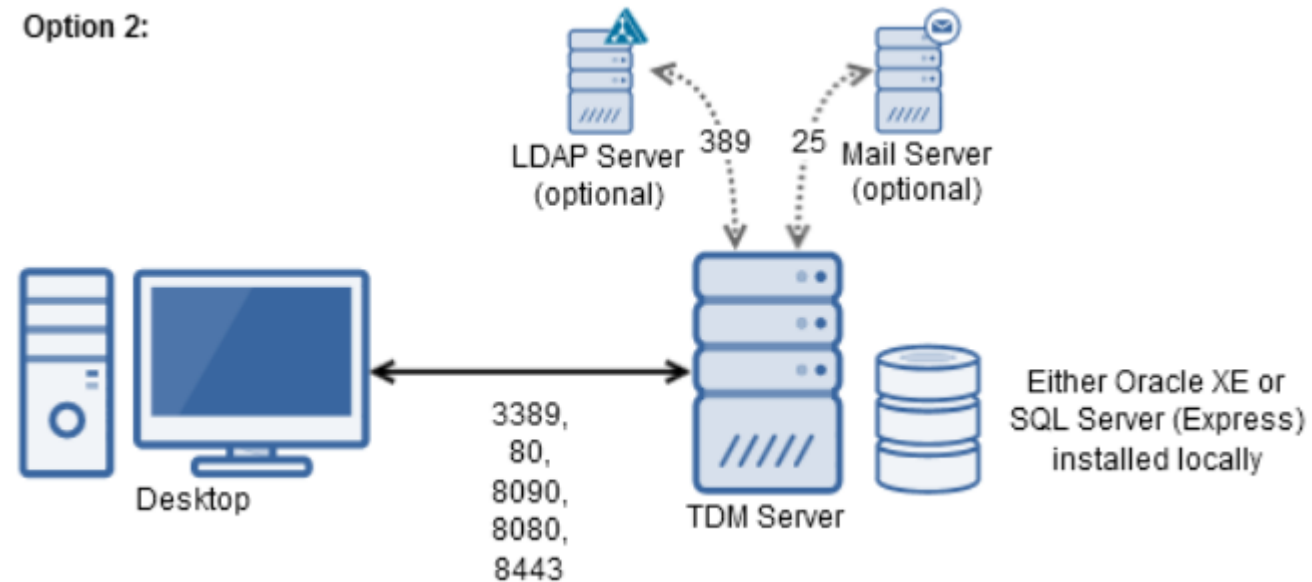
Memory: 16 GB

Free Space: 20 GB

CPU: 1x Quad core

Network: 1 Gbit

Option 2:



Medium Architecture – small TDM team & selected Data Consumers

Server (medium usage, up to 5 concurrent users)

OS: Windows Server 2008 R2 Standard Edition or higher

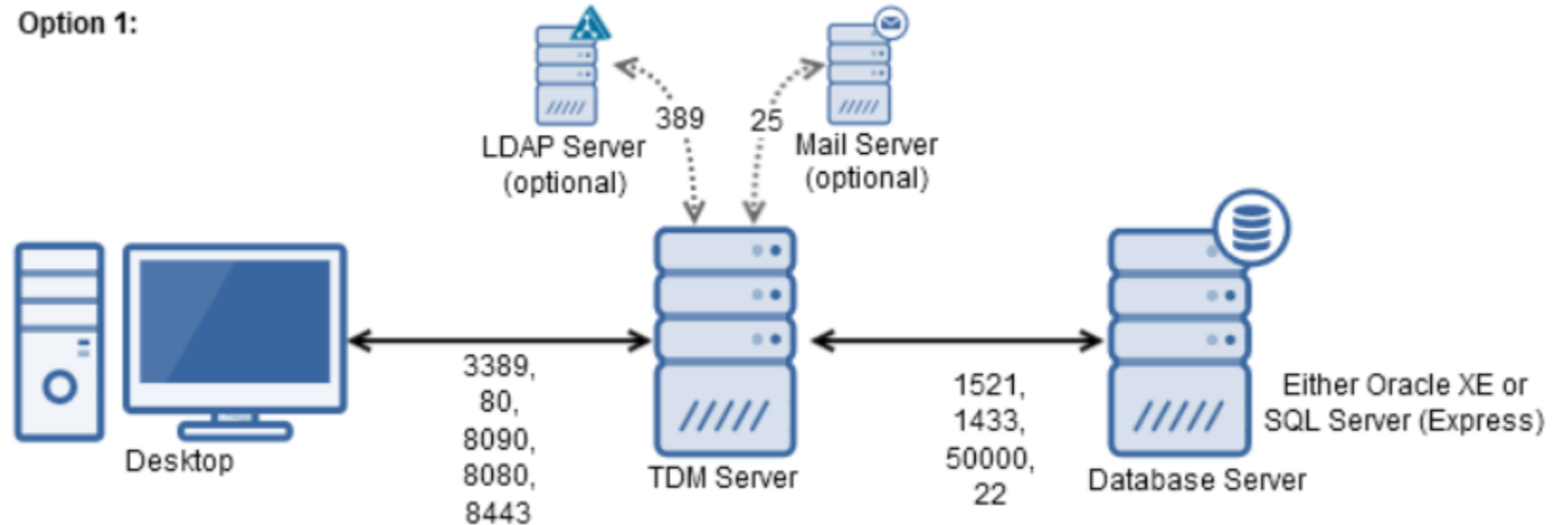
Memory: 16 GB

Free Space: 20 GB

CPU: 1x Quad core

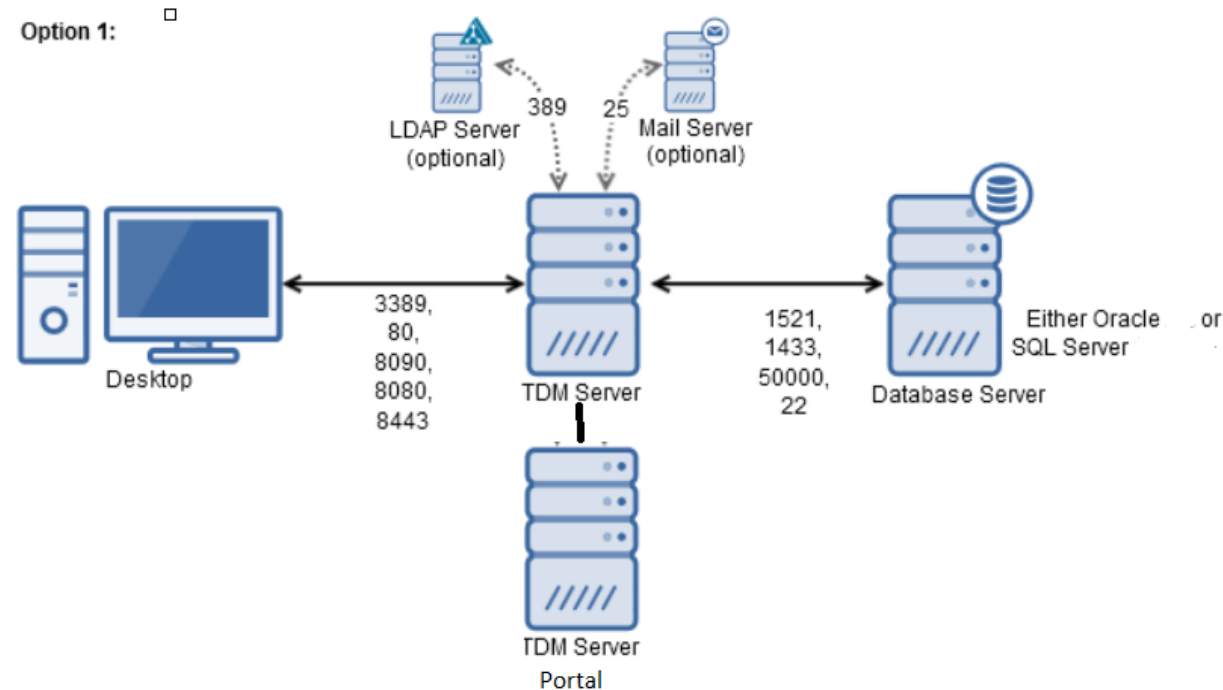
Network: 1 Gbit

Option 1:



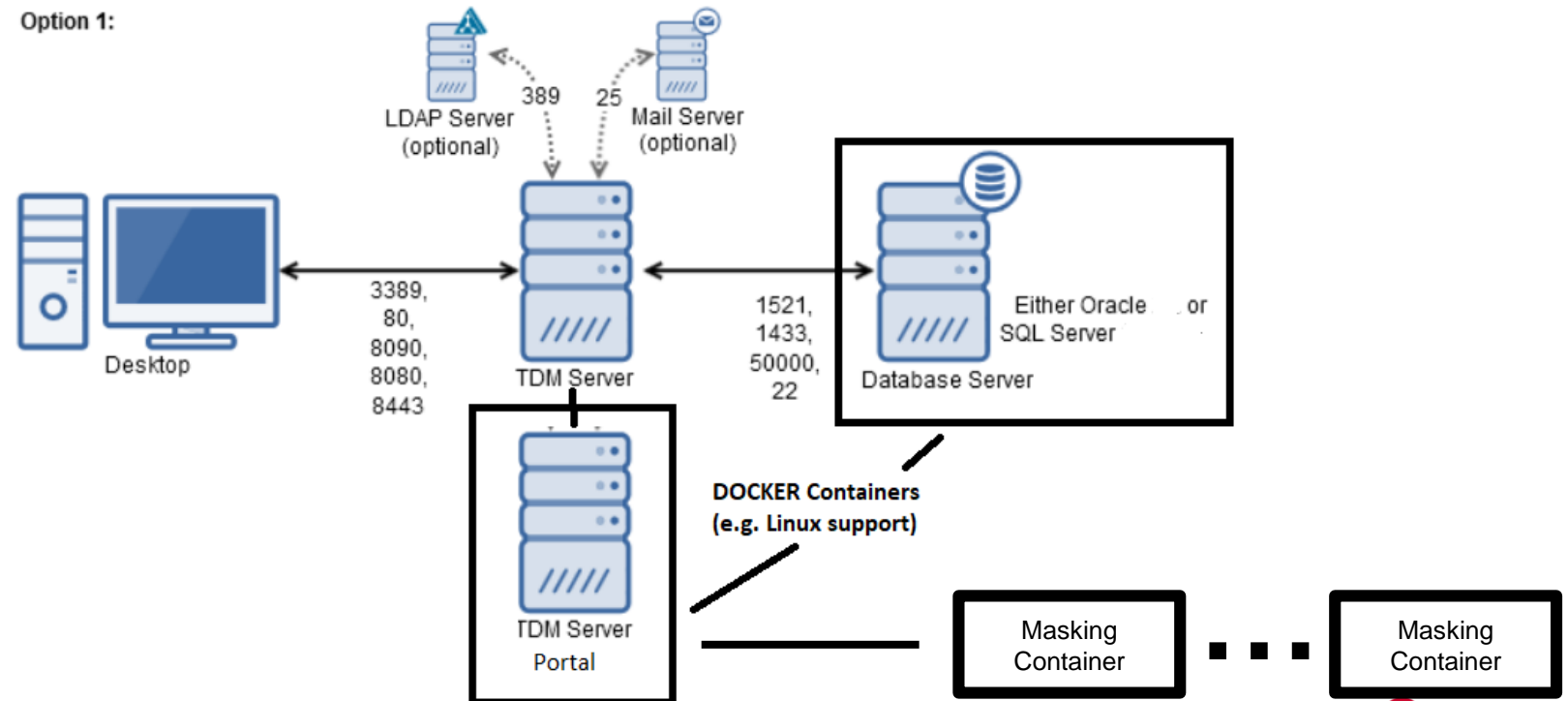
Large Architecture – medium TDM team & many Data Consumers

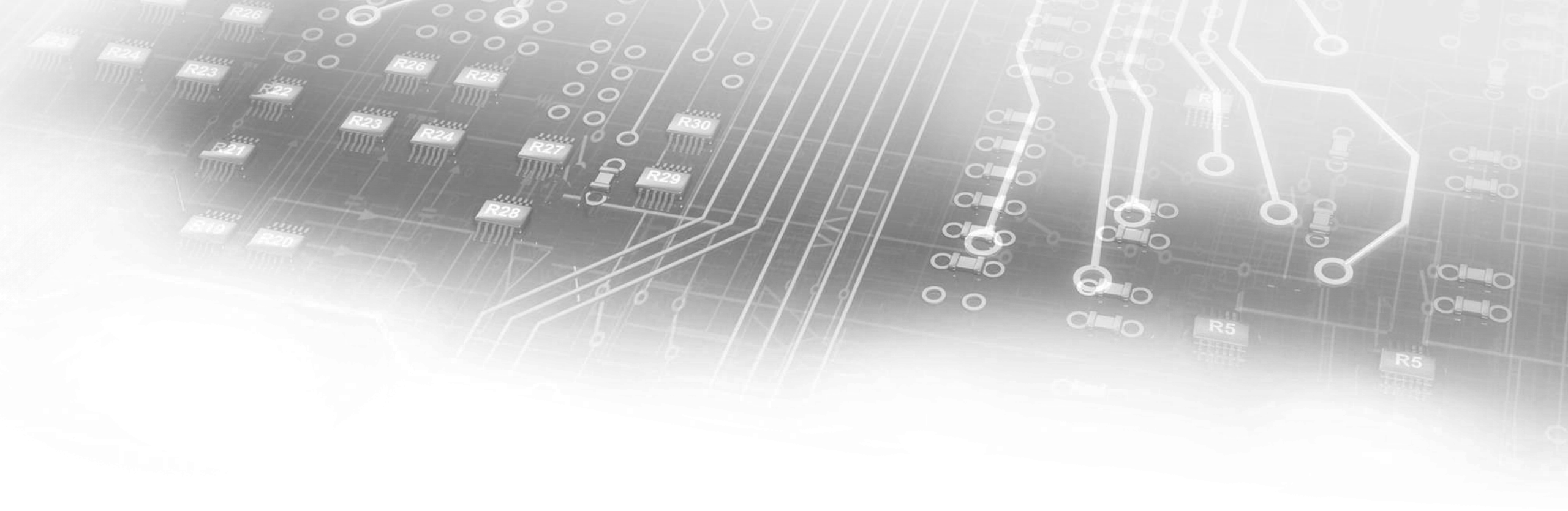
- **Server** (high volume or terminal services)
OS: Windows Server 2008 R2 64-bit Standard Edition or higher
Memory: 32 GB
Free Space: 20 GB
CPU: 2x Quad Core, 2.7GHz, 6 MB L3 Cache, 1 GHz HyperTransport or equivalent
Network: 1 Gbit



Large Architecture – medium TDM team & many Data Consumers, containerization (Portal, DB, Horizontal Masking Scalability)

- **Server** (high volume or terminal services)
OS: Windows Server 2008 R2 64-bit Standard Edition or higher
Memory: 32 GB
Free Space: 20 GB
CPU: 2x Quad Core, 2.7GHz, 6 MB L3 Cache, 1 GHz HyperTransport or equivalent
Network: 1 Gbit



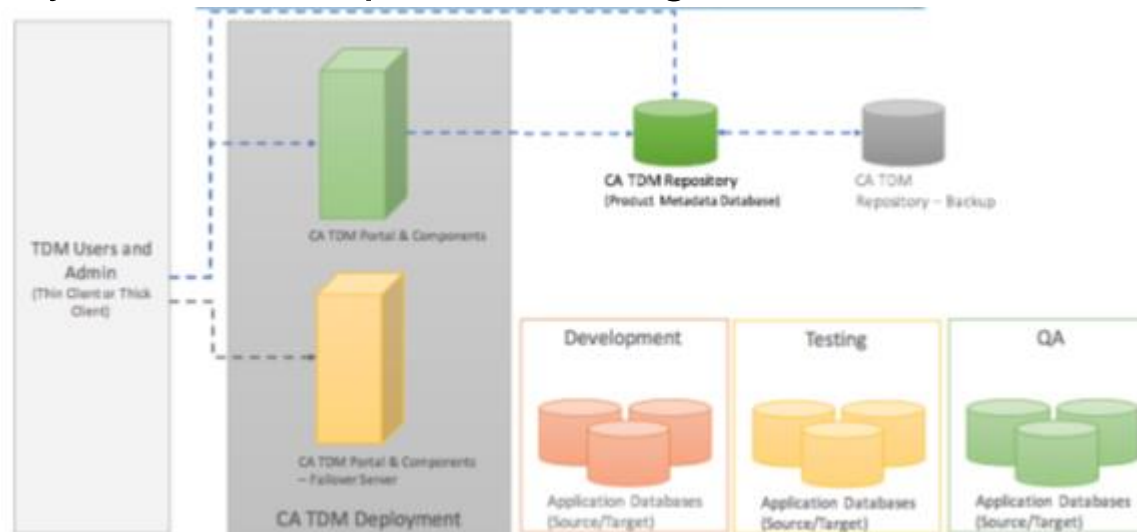


Disaster Recovery



Disaster Recovery Architecture – Active/Passive

- Failover server
 - Dedicated server built and installed with same version as the CA TDM production software and components
 - The server should have same configuration as the original server –
 - All the component files and implementation files should match with the TDM server
- TDM Repository
 - Repository is a database and used to store CA TDM meta data information
 - Daily back up of the database is recommended –
 - One backup repository should be up and running





Licensing



CA Test Data Manager Licensing

License Name	Description
CA TDM for Profiling, Masking, and Subsetting	A named user who can configure and execute masking and subsetting jobs using Subset, FastDataMasker, and Test Data Manager Portal capabilities. This SKU also entitles the user to create, update and execute Javelin Flows
CA TDM for Data Generation, Test Matching, and Find & Reserve	A named user who can use Test Data Manager capabilities to generate synthetic data and create Test Mart data pools, as well as rules to enable test data find & reserve. This SKU also entitles the user to create, update and execute Javelin Flows
CA TDM for Test Data on Demand	A concurrent user (QA/developer) who needs access to the test data. User can use integrations with external tools such as ALM, and Self-Service in TDM Portal. This SKU also entitles the user to execute Javelin Flows.
CA TDM Data Source Tier 1	This SKU represents the complexity of the environment for which Test Data Management is required, in terms of the number of databases TDM will be applied to. Includes Oracle, MS SQL Server, DB2 LUW, DB2 AS/400, and Teradata RDBMSes
CA TDM Data Source Tier 2	This SKU represents the complexity of the environment for which Test Data Management is required, in terms of the number of databases TDM will be applied to. Includes non-mainframe relational databases outside of TIER1 including Sybase, PostgreSQL, Netezza, MySQL, and others
CA TDM Data Source Flat Files (Non-Mainframe)	This SKU represents a single license to cover all TDM operations against Non-Mainframe flat files such as JSON, XML, CSV, etc.
CA TDM Mainframe DB Source	This SKU represents the number of databases/datasets TDM will be applied to in a Mainframe environment, including DB2, IMS, VSAM or other Sequential Files

CA Test Data Manager

Licensing

{ Data source count S:2,M:4,L:6
TDM for IMS
TDM for DB2 }

{ TDM for Subset & Making
S:2, M:3, L:5 }



Phase 1
Profile, Subset & Mask



Data Engineer



Phase 2

Coverage Analysis

Data Gen

Test Data Matching



Phase 3

On Demand

Reserve

Generate

Data Match



Dev/QA



Test Architect

{ TDM for DataGen & Match S:3, M:8, L:15 }

{ TDoD Consumer
S:10, M:50, L:100 }



Security

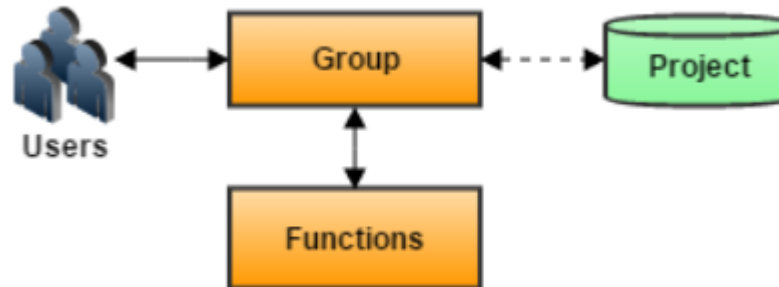


TDM Access and Security

- The TDM “Administrator” role is used to manage the server & users
- The “Test Data Engineer” role is used to configure Test Data Manager jobs for particular purposes (masking, subsetting, cloning, data gen, etc.)
- The “Test Engineer” role is used to query for matching Test Records, or to use the Self-Service Portal to launch jobs exposed by the Test Data Engineers
- Each of these roles may be linked to an LDAP user group for domain-specific role-based access control

TDM Access and Security

- As an administrator, you use the CA Test Data Manager security features to manage users and user groups.
 - The security model is based on groups and has the following features:
 - To access projects and functions, users must be associated with a group.
 - Each group belongs to one project and has associated functions.
 - If a group is not associated with a project, the group is a Super Administrator.
- The following diagram shows the security model:





Thank You





BROADCOM[®]

connecting everything[®]