



CM WebClient

Web and Mobile Application Generation

ca Expo'12 | Mannheim
30. Oktober 2012

cm FIRST
Rethink Modernization

Who is CM First / John Rhodes?

Enterprise Software Development Integrator

- Offices in Switzerland, USA, Italy
- CA Primary Sales and Technology Partner

John Rhodes

CTO, North America

- CA Mainframe/Midrange Products
- WebClient, M3
- MetaAnalytics

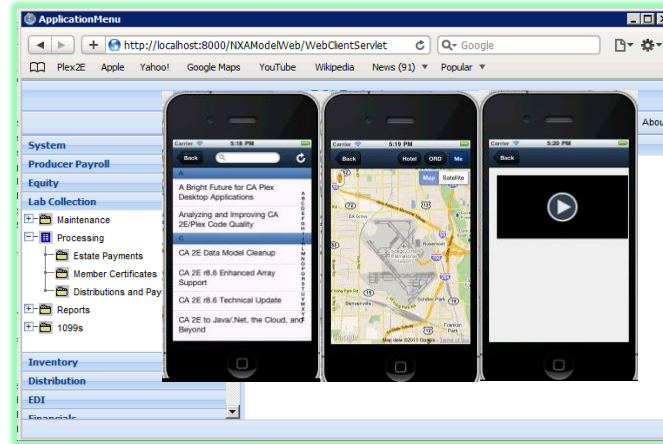
From Austin, Texas

- Live Music Capital of USA
- Soon to be F1 Capital?

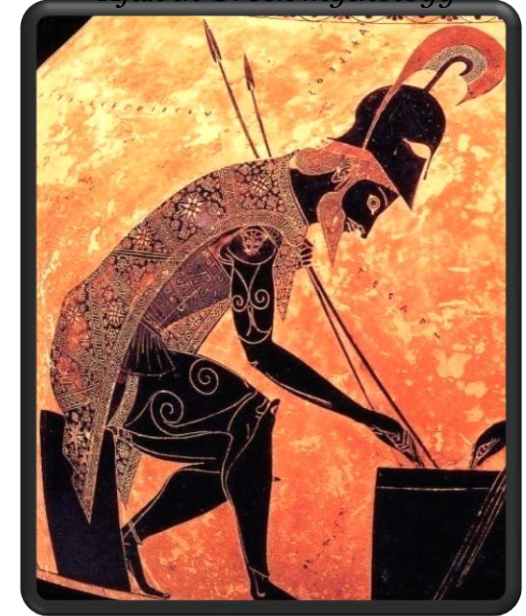


Presentation Agenda

- Technology
- Features
- Demo
- Questions



Ajax in Greek mythology

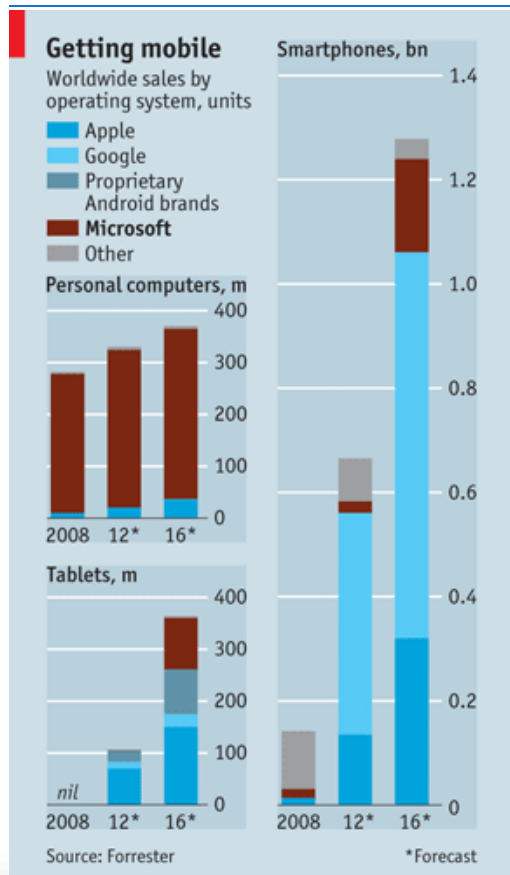


Technology

cmFIRST
Rethink Modernization



The Future



- Microsoft currently has dominant share of desktop
 - And will eventually have significant tablet and phone share
- But Apple and Google dominate total devices
- Future-proof your apps by adding **JavaScript** and **HTML5** to your desktop technology – **Plex+WebClient**

AJAX / JavaScript / HTML5 is Dominant

...and expanding into Mobile



TAKAYA CORP.
INDUSTRIAL EQUIPMENT DIV

MEDICAL MUTUAL
Liability Insurance Society of Maryland

Diners Club INTERNATIONAL

UNITED HERITAGE Insurance

consum COOPERATIVA

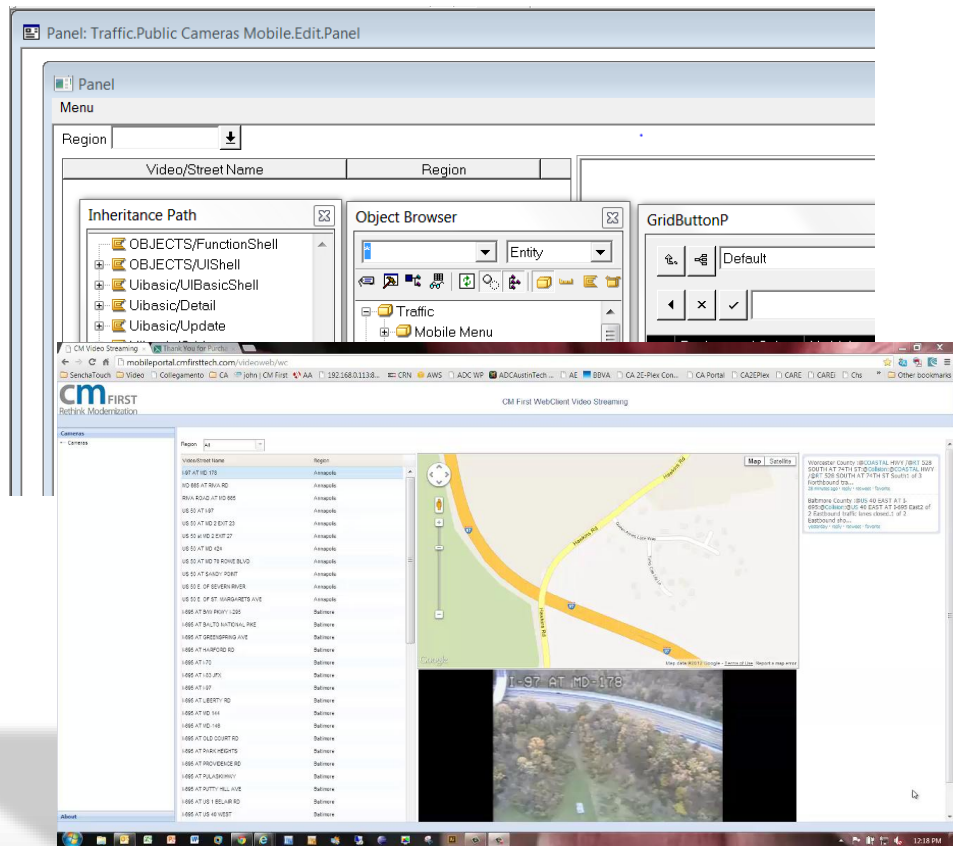
“Ajax remains the dominant RIA of choice, and HTML5 is poised to expand the power and flexibility of the browser only approach”

Gartner Group

Ajax mountain

Code Once, with Existing Skills

- Patterns
 - Foundation, Active, ...
 - OBASE (or your own)
 - Using Existing Designs
- Unified Code Base
 - Client-Server / 5250
 - Web
 - Mobile
- WYSIWG*
 - *within Plex limitations



Target Rich, Standards Based Apps

- Web Targets

- Chrome, Safari, IE, Firefox
 - No Plug Ins!
- Portals (Websphere, Liferay, ...)
- Rich, Ajax web controls (Dojo)

- Mobile Targets

- HTML5, Adobe/Apple Cordova
- iPhone, iPad, Android, BB6+, Windows

- Server Targets

- Websphere, Tomcat, JBoss
- Any back end Plex Supports
 - .NET, Java, IBM i/p, Unix, Linux, ...





Features

cmFIRST
Rethink Modernization

A look back: WebClient 1.6 - 2010

Cross-Browser, Components

- Advanced Component Options
 - TreeView / FlexGrid
- Cross-browser certification
 - Internet Explorer
 - Firefox
 - Safari
 - Chrome



WebClient 1.8 – May 2012

Mobile, Advanced RIA Controls, Portal, and More

- Mobile, Touch Optimized Templates
- User Interface / RIA Enhancements
 - Themes
 - Accordion / Menu
 - Enhanced Grid
 - More Advanced Controls
- Portal (Portlet) Generation
- Easier Licensing, Plex 7.0, and more
- MDI Preview



Mobile Features 1.8

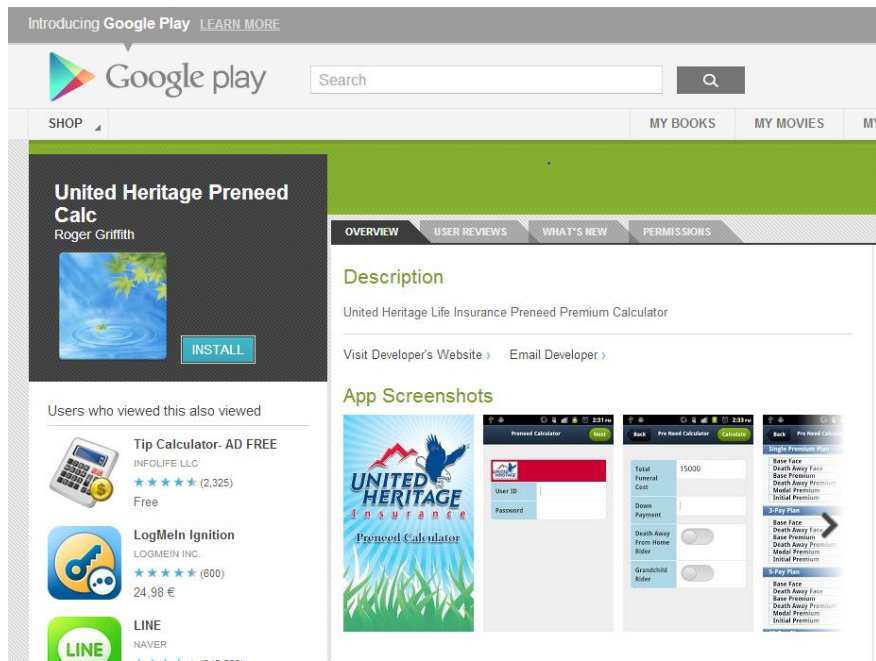


- Icon Menus
- Themes
- Advanced Geo
- Audio
- Video
- Email
- Address Book
- Local Storage
- Encryption
- Facebook Login
- Camera
- Signature
- Adobe Cordova (PhoneGap)
- HTML Forms
- Embedded pages
- Upload
- Mobile Service Pack (Year end 2012)

Device Support – Adobe/Apache Cordova



- Wrap HTML5 app
- Device support
 - Camera, address book, etc.
- App Stores
 - Google Play, iTunes



Browser Features 1.8

The screenshot displays the 'ApplicationMenu' web application running in a browser. The browser's address bar shows the URL 'http://localhost:8000/NXAModeWeb/WebClientServlet'. The application interface includes a left-hand navigation pane with an accordion menu listing various maintenance tasks such as 'Maintain Haulers', 'Maintain Hauling Charge Overrides', and 'Maintain Producer'. The main content area features a table with columns for 'Producer' and 'Producer Name', displaying data for 'JEROME SMEENK' and 'OLI WALLACE'. A 'Menu "Child" Top Application' is visible, showing a sub-menu with 'Activity' and 'Producer' options. A 'Grid Column Menu' is also present, allowing users to customize the table's columns. Other highlighted features include 'Drag n Drop' for reordering, 'Filtering' for data refinement, 'Export to CSV' for data export, 'Save Placement' for saving the current view, and 'Scaling' for adjusting the interface size. The bottom of the screen shows a 'Company' and 'Division' dropdown menu.

Drag n Drop

Export to CSV

Filtering

Menu "Child" Top Application

Grid Column Menu

Accordion

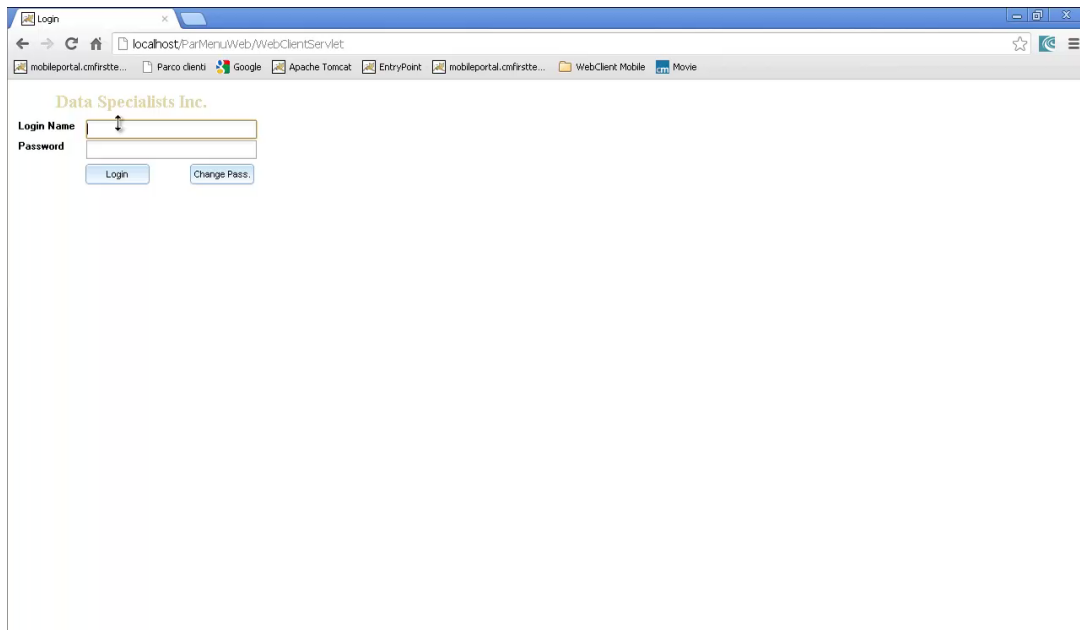
Save Placement

Scaling

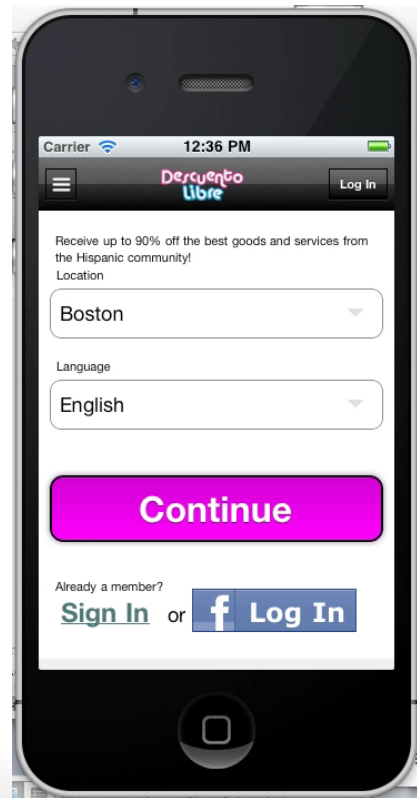
And there is more...

- MDI Preview
- No Cryptkey
- Progress, Slider, Timepicker, Spin, Listbox
- Upload
- Portal Standards
- Log Messages
- JavaScript Automatic Minification
- More Events
- More Templates
- ...

Target Web and Mobile



A screenshot of a web browser window displaying a login page for "Data Specialists Inc.". The browser's address bar shows "localhost/ParMenuWeb/WebClientServlet". The page has a simple layout with a "Login Name" field, a "Password" field, and two buttons: "Login" and "Change Pass.". The browser's tab is titled "Login".



A screenshot of a mobile application interface for "Descuento Libre". The app shows a promotional message: "Receive up to 90% off the best goods and services from the Hispanic community!". Below this, there are two dropdown menus for "Location" (set to "Boston") and "Language" (set to "English"). A large pink "Continue" button is prominently displayed. At the bottom, there is a section for "Already a member?" with links for "Sign In" and "Log In" (which includes a Facebook logo).

Demo

cmFIRST
Rethink Modernization



Demo Scenario



Lessons Learned

- Next time, take the train!
- Europeans love traffic cameras!

My Summer Drive, 2012

CM First – Skyline Partnership

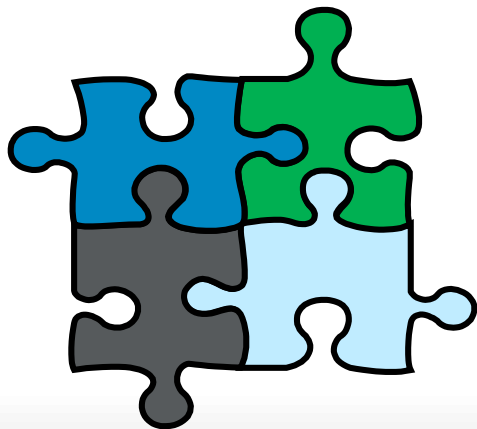


- Video streaming and sharing technology
 - Traffic Authorities
 - Law Enforcement
 - Border Protection
- Web and Mobile
 - Public Access
 - Private/Secure Access

How does Plex and WebClient fit In?

- CA Plex

- Flexible – Java and C#
- Business Patterns
- Productivity



- CM WebClient

- Web and Mobile Generation to wide range of devices
- Web/Mobile Components
 - Video
 - Geo
 - Camera
 - Twitter

Demo Scenario

CM Video Streaming Thank You for Purcha... mobileportal.cmfirsttech.com/video/web/wc

SenchaTouch Video Collegamento CA John | CM First AA 192.168.0.113:8... CRN AWS ADC WP ADCAustinTech... AE BBVA CA 2E-Plex Con... CA Portal CA2EPlex CARE CAREI Cns Other bookmarks

cm FIRST
Rethink Modernization

CM First WebClient Video Streaming

Cameras

Region All

Video/Street Name	Region
I-97 AT MD-178	Annapolis
MD 885 AT RIVA RD	Annapolis
RIVA ROAD AT MD 885	Annapolis
US 50 AT I-97	Annapolis
US 50 AT MD 2 EXIT 23	Annapolis
US 50 AT MD 2 EXIT 27	Annapolis
US 50 AT MD 424	Annapolis
US 50 AT MD TO ROWE BLVD	Annapolis
US 50 AT SANDY POINT	Annapolis
US 50 E OF SEVERN RIVER	Annapolis
US 50 E OF ST. MARGARETS AVE	Annapolis
I-695 AT BAY PKWY I-295	Baltimore
I-695 AT BALTO NATIONAL PIKE	Baltimore
I-695 AT GREENSPRING AVE	Baltimore
I-695 AT HARFORD RD	Baltimore
I-695 AT I-70	Baltimore
I-695 AT I-83 JFX	Baltimore
I-695 AT I-97	Baltimore
I-695 AT LIBERTY RD	Baltimore
I-695 AT MD-144	Baltimore
I-695 AT MD-146	Baltimore
I-695 AT OLD COURT RD	Baltimore
I-695 AT PARK HEIGHTS	Baltimore
I-695 AT PROVIDENCE RD	Baltimore
I-695 AT PULASKI HWY	Baltimore
I-695 AT PUTTY HILL AVE	Baltimore
I-695 AT US 1 BELAIR RD	Baltimore
I-695 AT US 40 WEST	Baltimore

Map Satellite

Google

Map data ©2012 Google, Terms of Use Report a map error

I-97 AT MD-178

Worcester County :BUS 528 SOUTH AT 74TH ST @COLLINS @COASTAL HWY /@ST 528 SOUTH AT 74TH ST South of 3 Northbound tra... 28 minutes ago · reply · retweet · favorite

Baltimore County :BUS 40 EAST AT I-695 @COLLINS @US 40 EAST AT I-695 East of 2 Southbound traffic times close... of 2 Eastbound sho... yesterday · reply · retweet · favorite

About

12:18 PM



What is Next?

cmFIRST
Rethink Modernization

- **Planned Feature Set**
 - Full MDI Support
 - More Mobile Templates
 - Extended tablet templates
 - What the market demands
- Enterprise JavaScript / Disconnected Mobile Apps – Already Prototyped



Enterprise JavaScript

Google Web Toolkit
Showcase of Features

Text Input

Popups

Panels

- Decorator Panel
- Flow Panel
- Horizontal Panel
- Vertical Panel
- Absolute Panel
- Dock Panel
- Disclosure Panel
- Tab Panel**
- Horizontal Split Panel
- Vertical Split Panel

Example CSS Style Source Code

CA 2E/Plex 2011

cmfirst.jkerns.com

Panel

Integer A

Integer B

Result

+ - * / %

Plex Application
Running Directly on
Device – No web
server or connection
needed, with local
storage

cmfirstgroup.com

support.cmfirsttech.com

Swiss Office – or –
john.rhodes@cmfirstgroup.com

