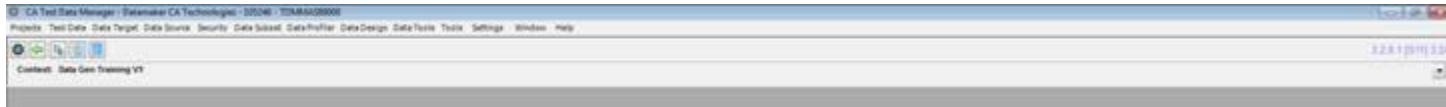


Verify the repository does not need any more maintenance.

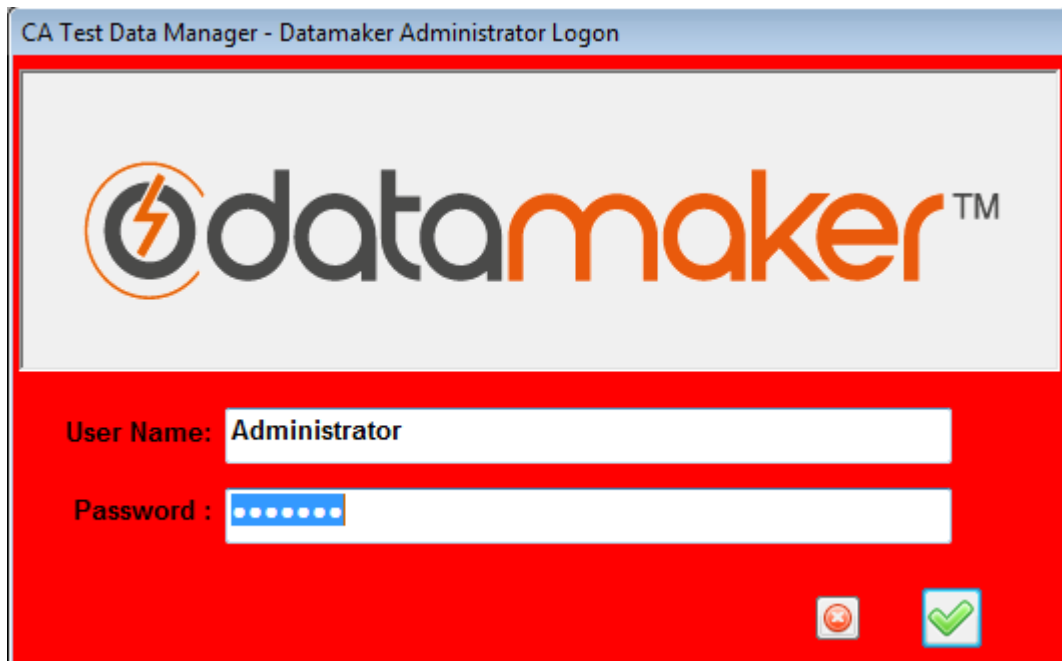
To verify that the repository does not need any more maintenance, you can use the Ctrl + Alt + M function.

On your keyboard, press Ctrl + Alt + M while logged into Datamaker.



A 'GT Datamaker Administrator Logon' window should show.

Enter your administrator User Name and Password.



A 'Maintain Connections' window should appear.

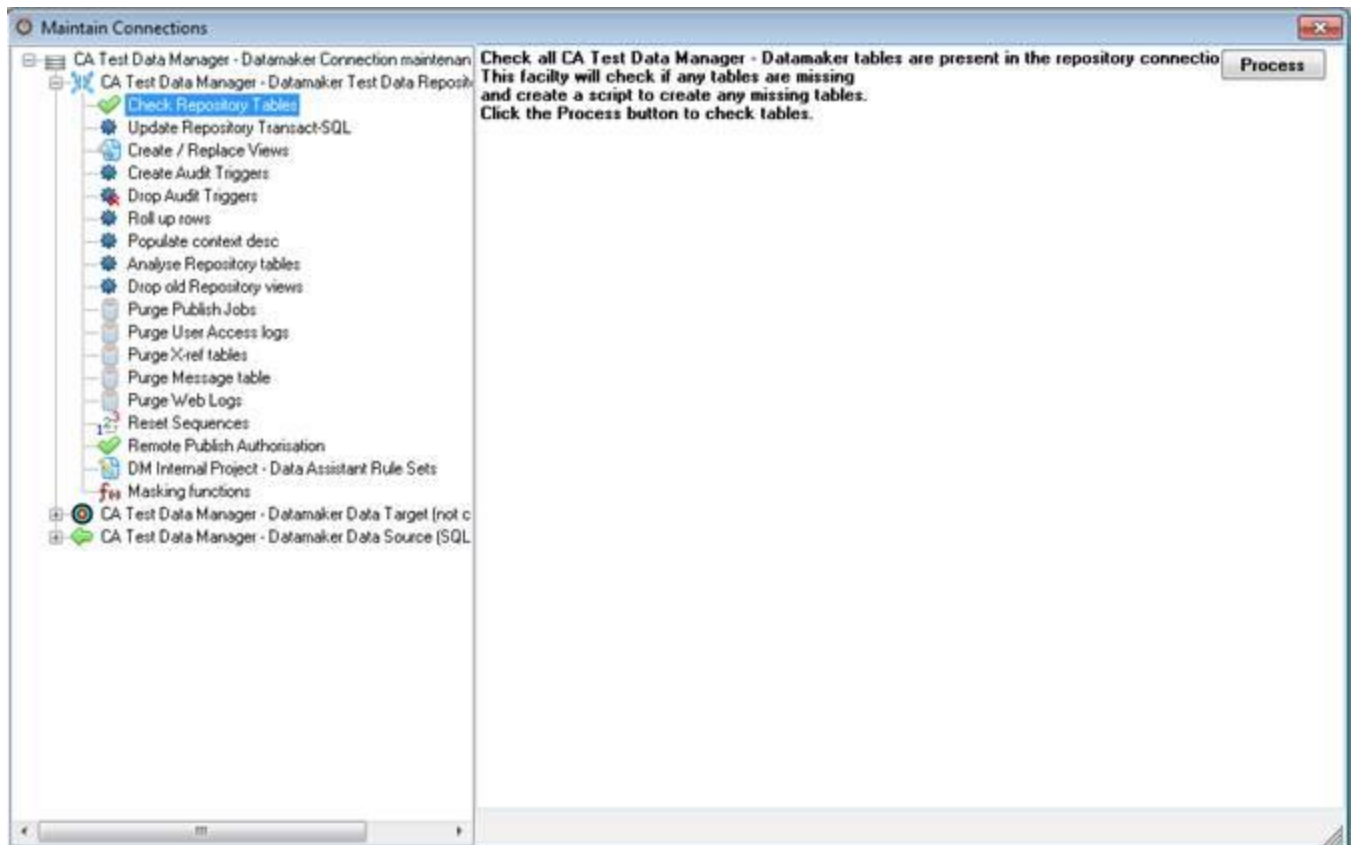
Expand the first tree under 'GT Datamaker Connection maintenance'.

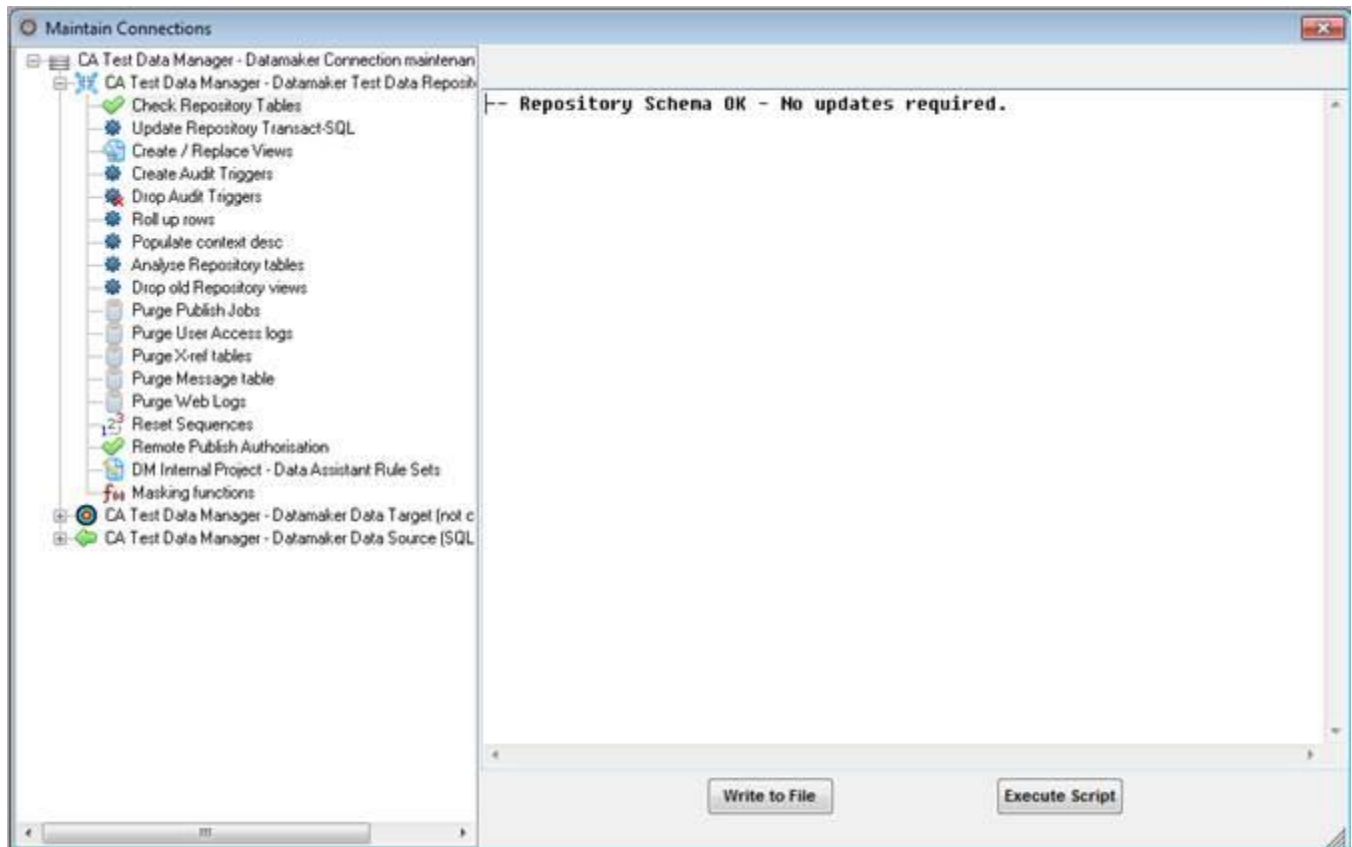
Click on the 'Check Repository Tables' icon.

Click on the 'Process' button located in the top, right hand corner.

You should see a 'Checking repository tables' message.

If everything has updated correctly, you should then get a 'Repository Schema OK - No updates required' message.





Click on the 'Update Repository PL/SQL' in the tables section.

In the 'Update Repository PL/SQL' pop up, you will be asked, 'Do you want to update all the repository PL/SQL?'

Click the 'Yes' button.

You should get a message returned containing '0 failed or not attempted' message.

Click 'OK'.

This verifies that your repository database is up to date and synced properly.

