

Table of Contents

APM API	2
Introscope Webservices.....	2
SOAP UI	2
Installing and configuring SOAP UI 4.5.0 with MetricDataservice WSDL	2
Important Reminders	5

APM API

Introscope Webservices

http://<EM_hostname>:8081/introscope-web-services/services/AlertPollingService?wsdl
http://<EM_hostname>:8081/introscope-web-services/services/MetricsDataService?wsdl
http://<EM_hostname>:8081/introscope-web-services/services/MetricsListService?wsdl
http://<EM_hostname>:8081/introscope-web-services/services/EmLifecycleService?wsdl

SOAP UI

Installing and configuring SOAP UI 4.5.0 with MetricDataservice WSDL

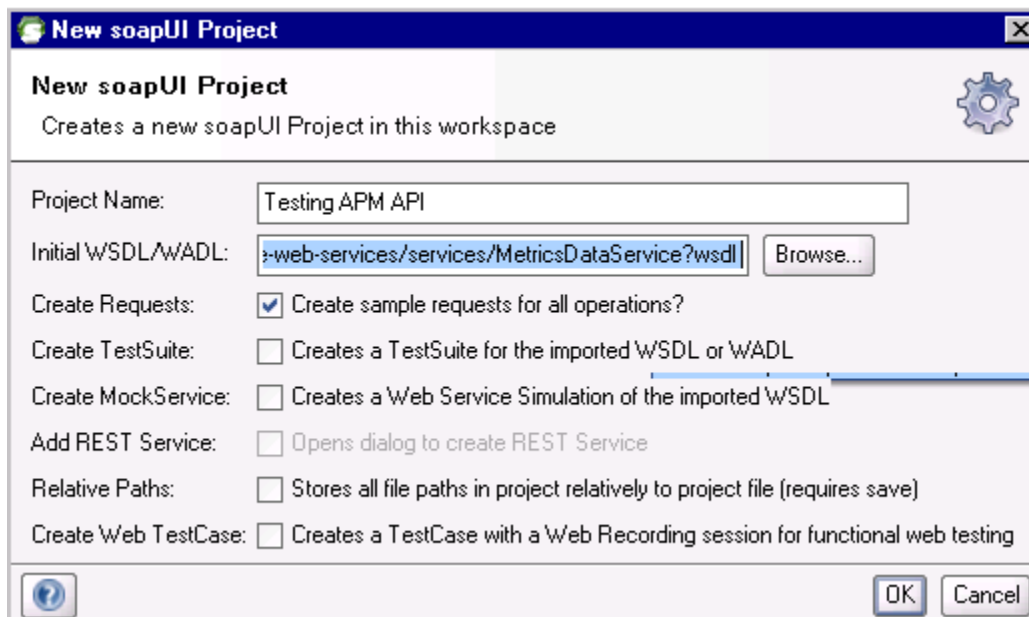
Download soapUI-x32-4_5_0.exe from internet

Launch the installer and proceed with the installation

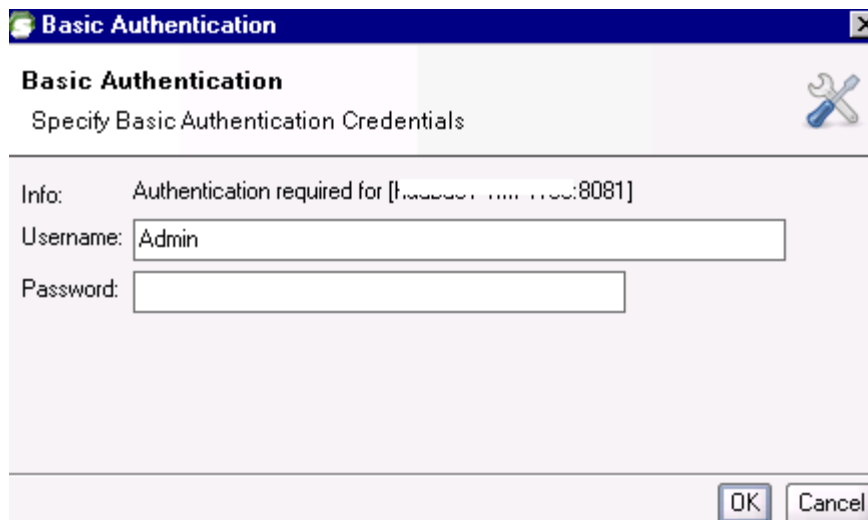
Click File \ New Soap UI Project

Give a Name and select one of the APM WSL, for example, where huaba01-VM74163 is the EM servername

<http://myEM:8081/introscope-web-services/services/MetricsDataService?wsdl>



Click OK



Basic Authentication

Specify Basic Authentication Credentials

Info: Authentication required for [localhost:8081]

Username:

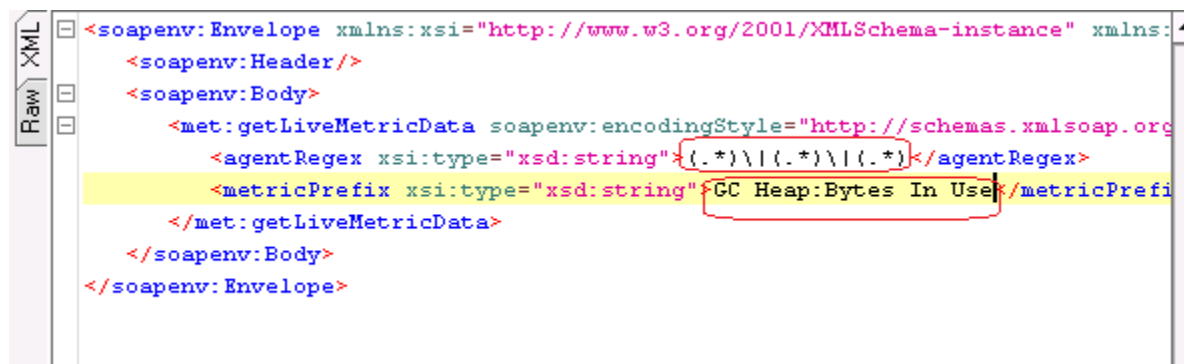
Password:

OK Cancel

Enter user = "Admin, click OK

Expand getLiveMetricData

Double click "Request 1"

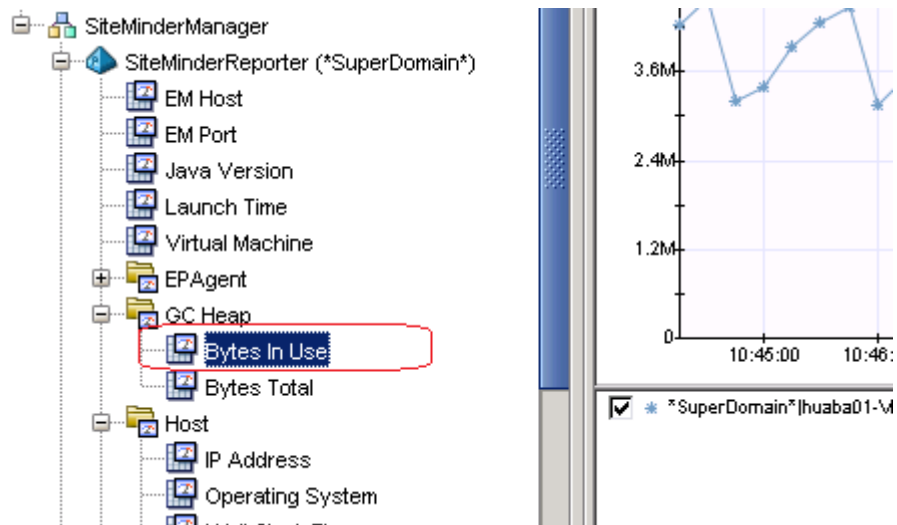


```

<soapenv:Envelope xmlns:xsi="http://www.w3.org/2001/XMLSchema-instance" xmlns:
  <soapenv:Header/>
  <soapenv:Body>
    <met:getLiveMetricData soapenv:encodingStyle="http://schemas.xmlsoap.org
      <agentRegex xsi:type="xsd:string">{.*}\|{.*}\|{.*}</agentRegex>
      <metricPrefix xsi:type="xsd:string">GC Heap:Bytes In Use</metricPrefix>
    </met:getLiveMetricData>
  </soapenv:Body>
</soapenv:Envelope>
  
```

Replace the question marks (?) with the correct values.

In my example, I want to query the below metric in Investigator



Click on the “Authorization” tab, and then enter the credentials.

The screenshot shows the 'Authorization' tab in SiteMinderManager. The top section displays a SOAP query in XML format, with the following structure:

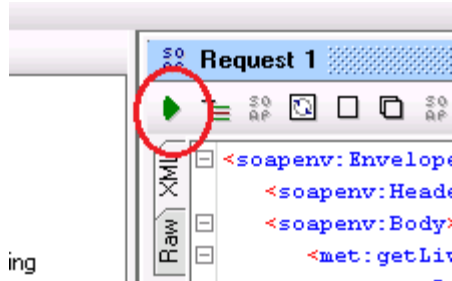
```
<soapenv:Envelope xmlns:xsi="http://www.w3.org/2001/XMLSchema-instance" xmlns:xsd="http://www.w3.org/2001/XMLSchema-instance">
  <soapenv:Header/>
  <soapenv:Body>
    <met:getLiveMetricData soapenv:encodingStyle="http://schemas.xmlsoap.org/soap/encoding/">
      <agentRegex xsi:type="xsd:string">{.*}\\|{.*}\\|{.*}</agentRegex>
      <metricPrefix xsi:type="xsd:string">GC Heap:Bytes In Use</metricPrefix>
    </met:getLiveMetricData>
  </soapenv:Body>
</soapenv:Envelope>
```

The bottom section contains a form for entering credentials:

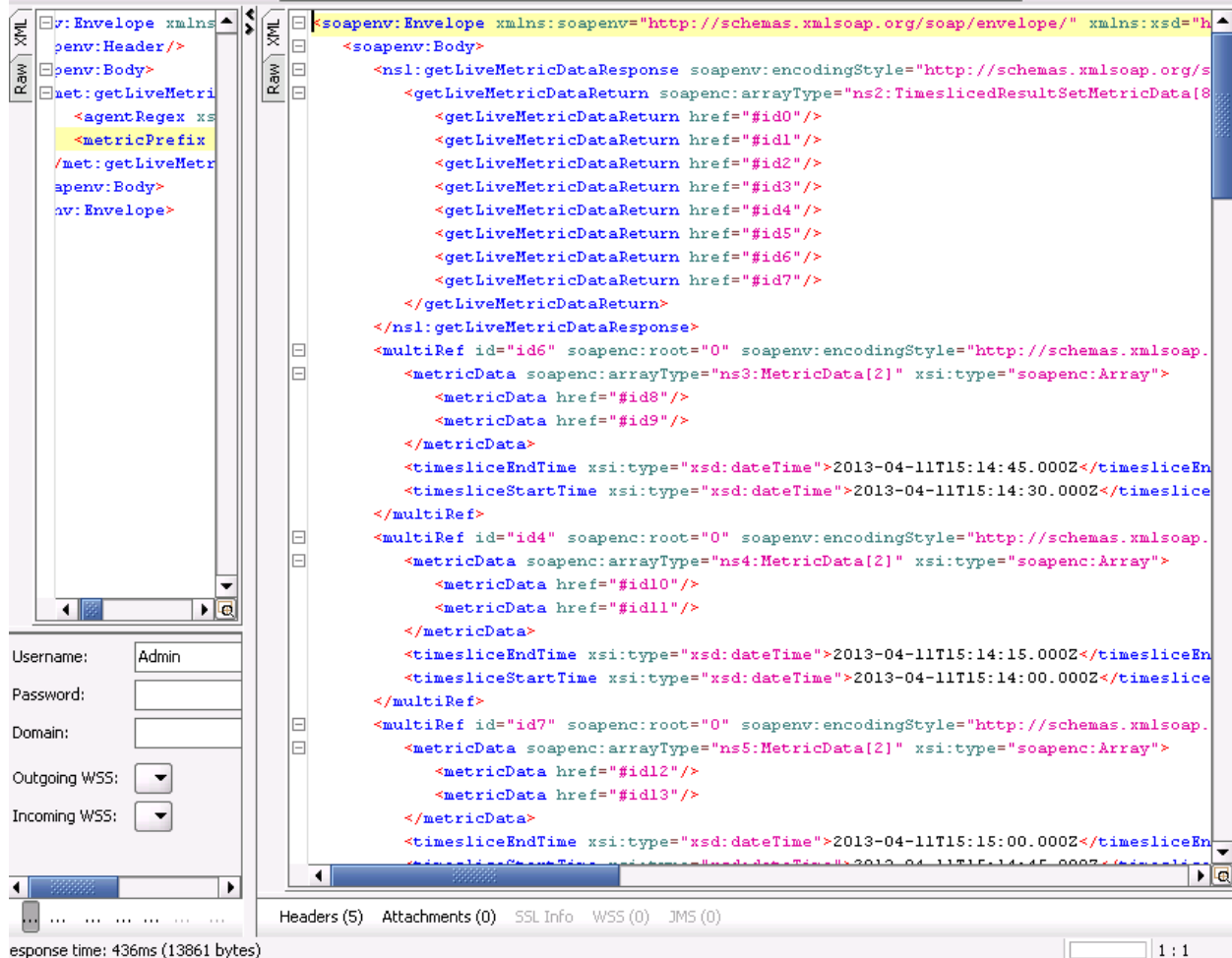
- Authorisation Type: Global HTTP Settings
- Username: Admin
- Password:
- Domain:
- Outgoing WSS:
- Incoming WSS:

At the bottom, there is a tab bar with 'Auth' selected, and a status bar showing 'Time: 14ms (1472 bytes)'.

Finally, click on the run button to send the query:

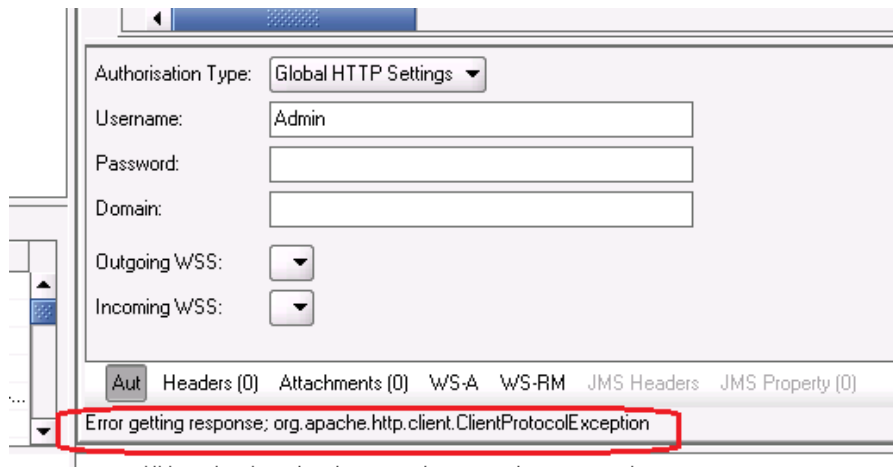


Result:



Important Reminders

1: Querying APM API using SOAP UI 4.5.1 will fail with the below error, it seems a problem with SOAP UI latest version as there is not issue using 4.5.0



2. You need to specify the Agent and metric expressions very carefully. Take care of spaces, capital letters and also escape the '(' and ')' with '\', for example, if you would like to query:

GC Monitor|Memory Pools|Eden Space:Amount of Space Used (bytes)

The correct metric expression would be:

GC Monitor\\|Memory Pools\\|Eden Space:Amount of Space Used \\(bytes\\)

To prevent mistakes, you might want to copy the metric expression from the MM Editor:

