

# How to define Business application policies for CEM UI in EEM configured with LDAP?

Sergio Morales

Principal Support Engineer

CA Technologies

[Morse06@ca.com](mailto:Morse06@ca.com)

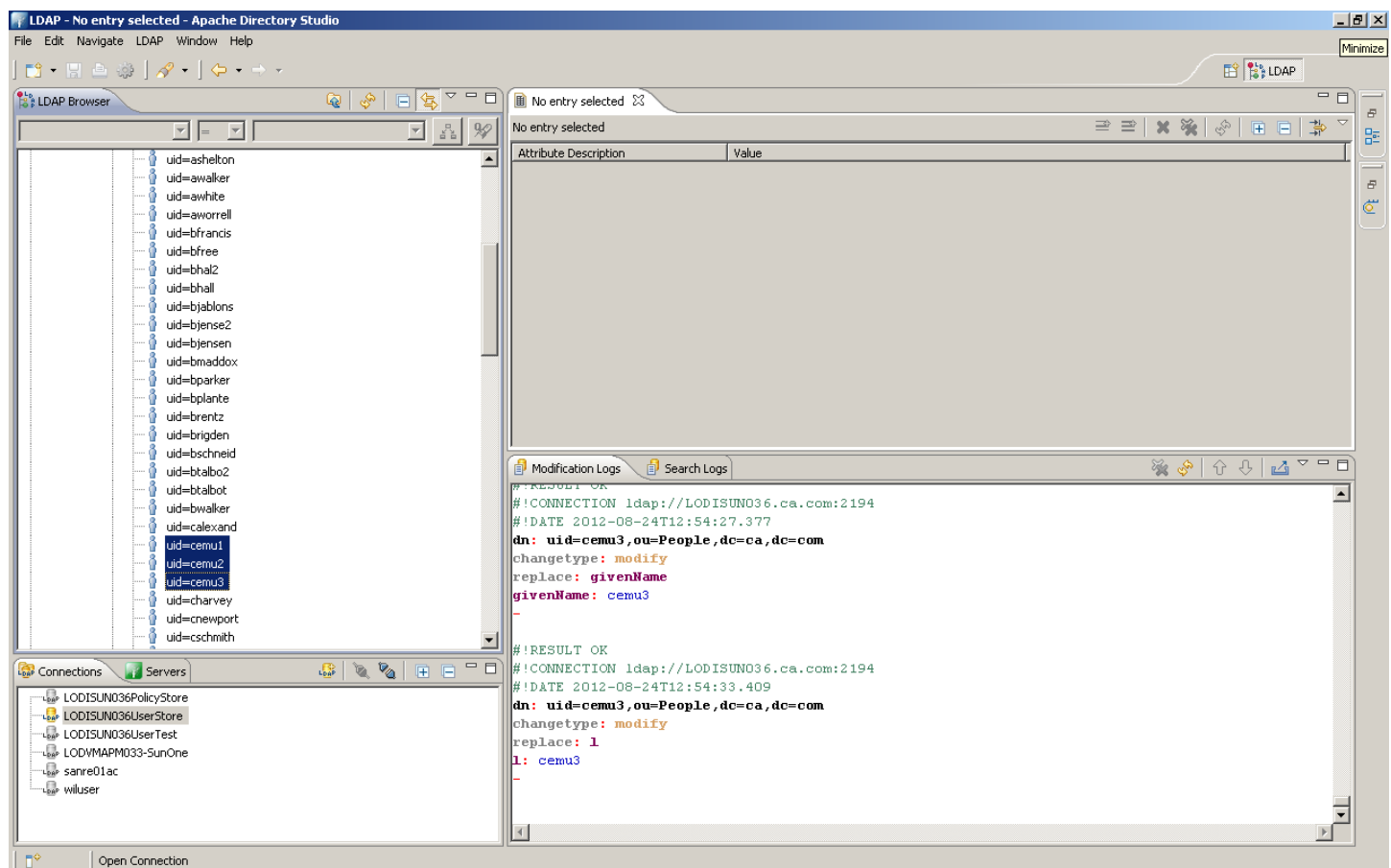
**Last updated: August, 2012**

Applies to : Any 9.x version

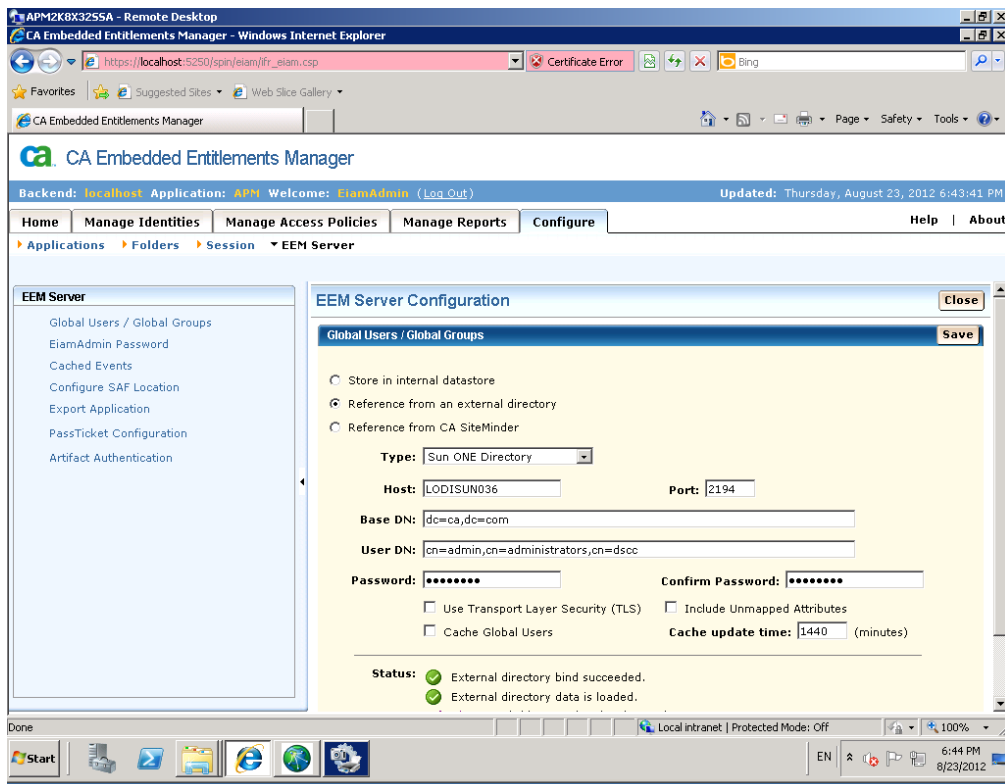
Pre-requisite: You should have created the APM EEM application using the APM safex scripts available from the Introscope EM\examples\authentication and have the LDAP server connection details.

NOTE: This scenario is when using EEM application group not a LDAP group, however the process would be the same.

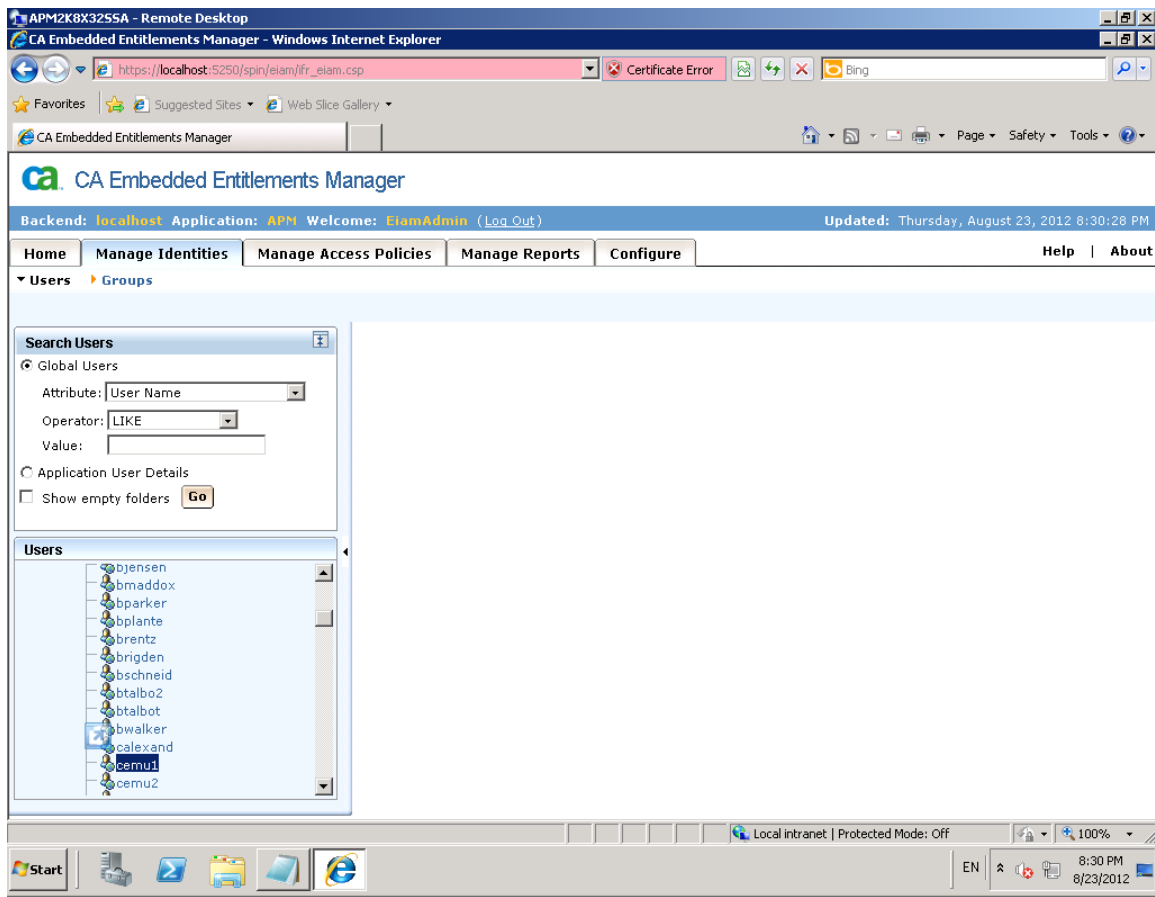
1. For this exercise I created 3 LDAP users:



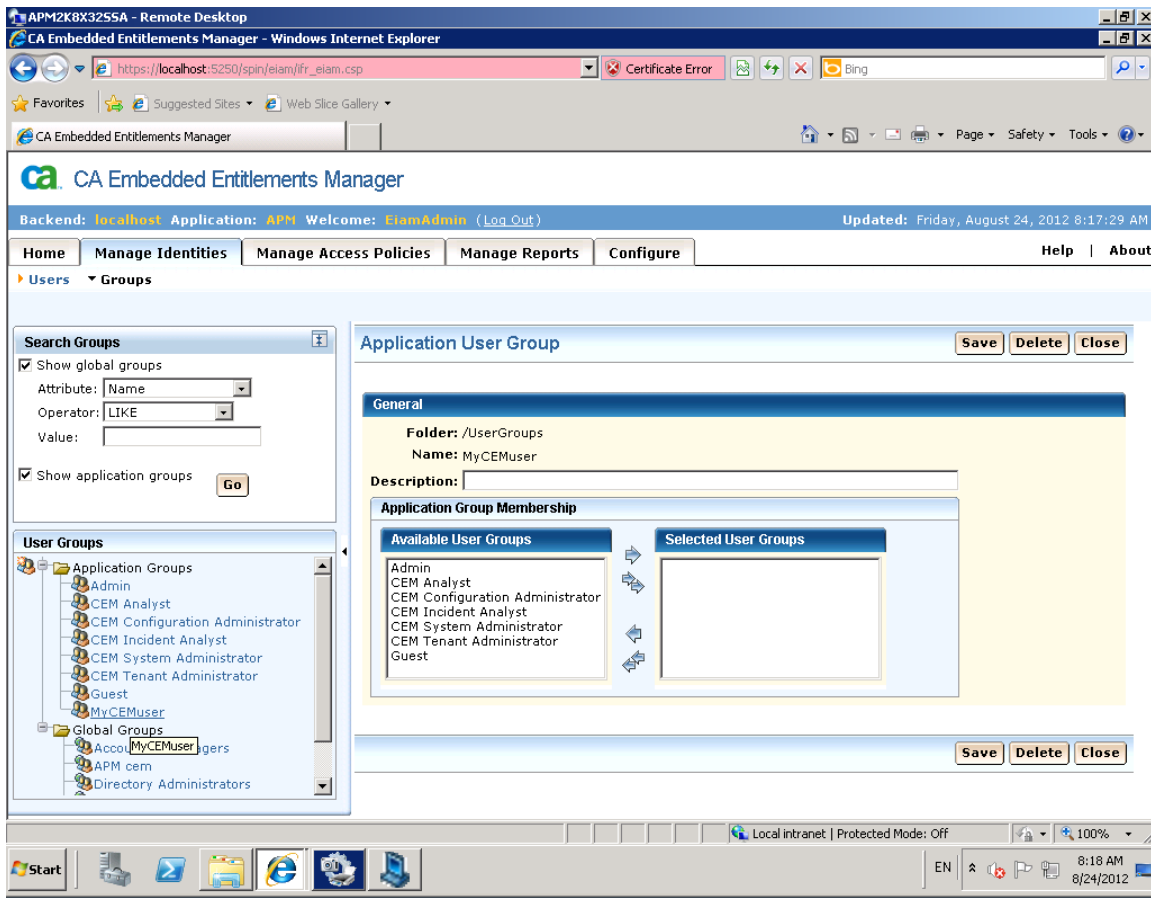
2. Log in to EEM > APM application using EiamAdmin
3. Configure EEM with LDAP: Go to Configure > EEM Server > Global Users / Global Groups and configure EEM with LDAP. You need to enter here the LDAP connection details:



4. Click Manage Identifies, Click Go, verify that LDAP users have beenloaded in EEM

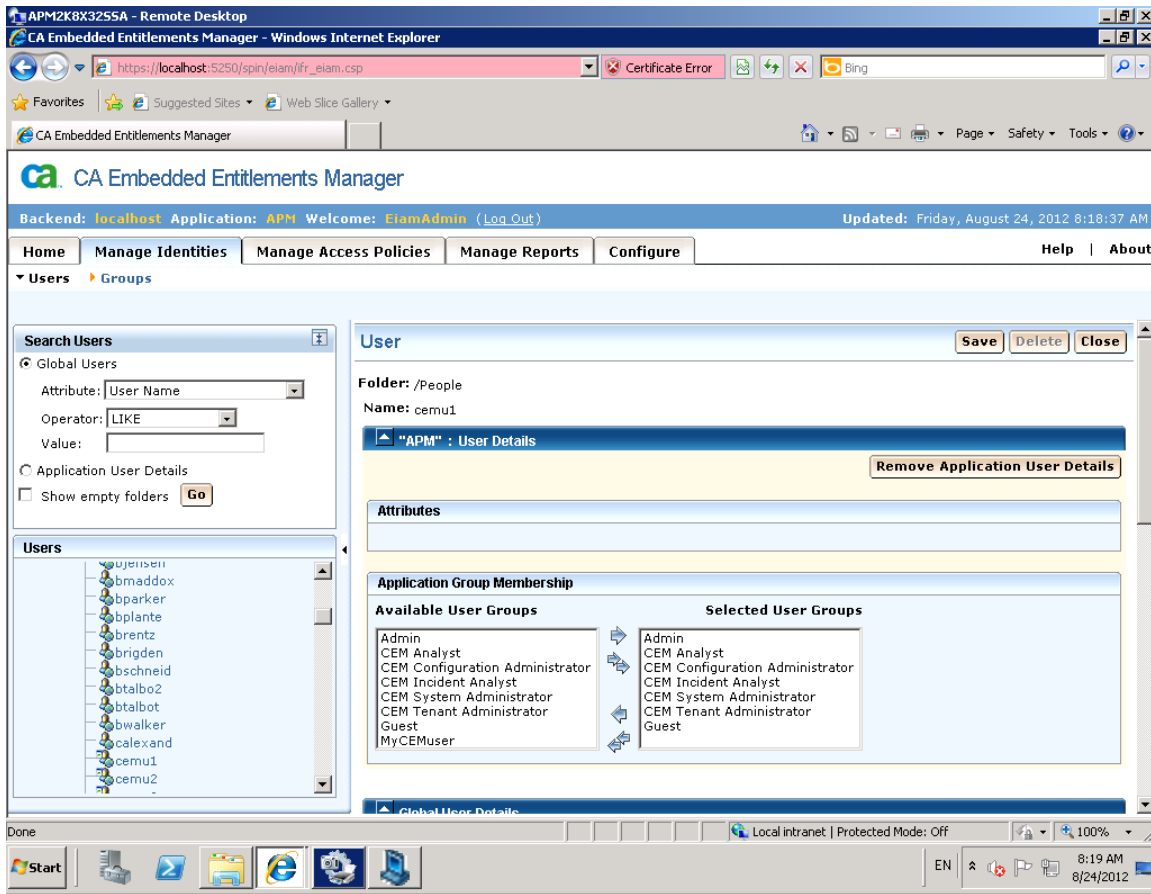


5. Click Groups, click the icon to create a “New application Group”, name it “MyCEMUser”



## 6. Grant permissions to users.

For “cemu1” LDAP user, to be part of everything, we will use this user to validate that policies are working.

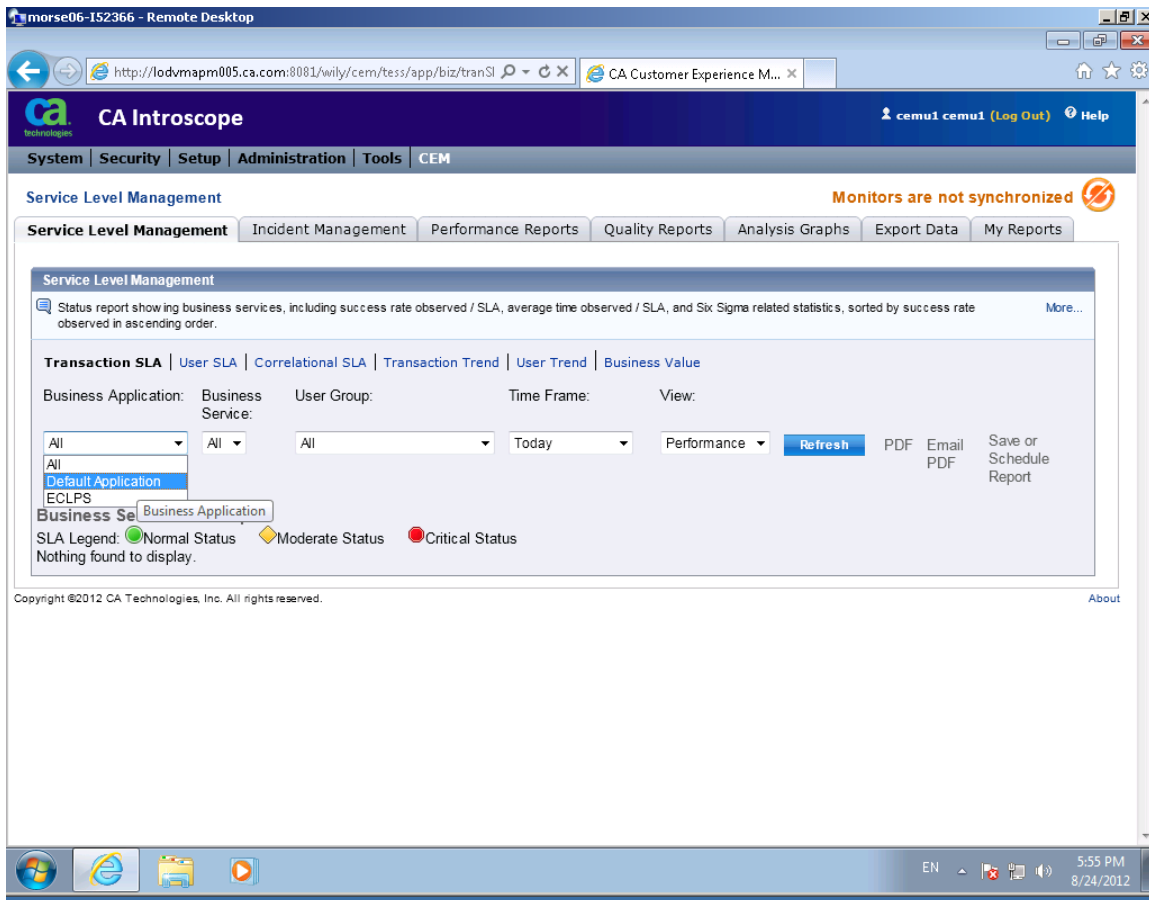


And cemu2 and cem3, to be part to our new custom group:

The screenshot shows the CA Embedded Entitlements Manager web interface. The breadcrumb navigation is "Users > Groups". The "Search Users" panel on the left shows "Global Users" selected with "Attribute: User Name" and "Operator: LIKE". The "Users" list on the left includes cemu2. The main "User" panel shows "Folder: /People" and "Name: cemu2". The "Application Group Membership" section shows "Available User Groups" (Admin, CEM Analyst, CEM Configuration Administrator, CEM Incident Analyst, CEM System Administrator, CEM Tenant Administrator, Guest, MyCEMuser) and "Selected User Groups" (MyCEMuser). The "Attributes" section is empty. The bottom status bar shows "Local intranet | Protected Mode: Off" and the time "8:21 AM 8/24/2012".


The screenshot shows the CA Embedded Entitlements Manager web interface. The breadcrumb navigation is "Users > Groups". The "Search Users" panel on the left shows "Global Users" selected with "Attribute: User Name" and "Operator: LIKE". The "Users" list on the left includes cemu3. The main "User" panel shows "Folder: /People" and "Name: cemu3". The "Application Group Membership" section shows "Available User Groups" (Admin, CEM Analyst, CEM Configuration Administrator, CEM Incident Analyst, CEM System Administrator, CEM Tenant Administrator, Guest, MyCEMuser) and "Selected User Groups" (MyCEMuser). The "Attributes" section is empty. The bottom status bar shows "Local intranet | Protected Mode: Off" and the time "8:21 AM 8/24/2012".

At this point, only “cemu1” will be able to login to CEM UI. If cemu2 or cemu3 tries to connect depending on the Internet Browser they will get either a blank page or a 303 Page Forbidden error message. Here the status when connecting using cemu1

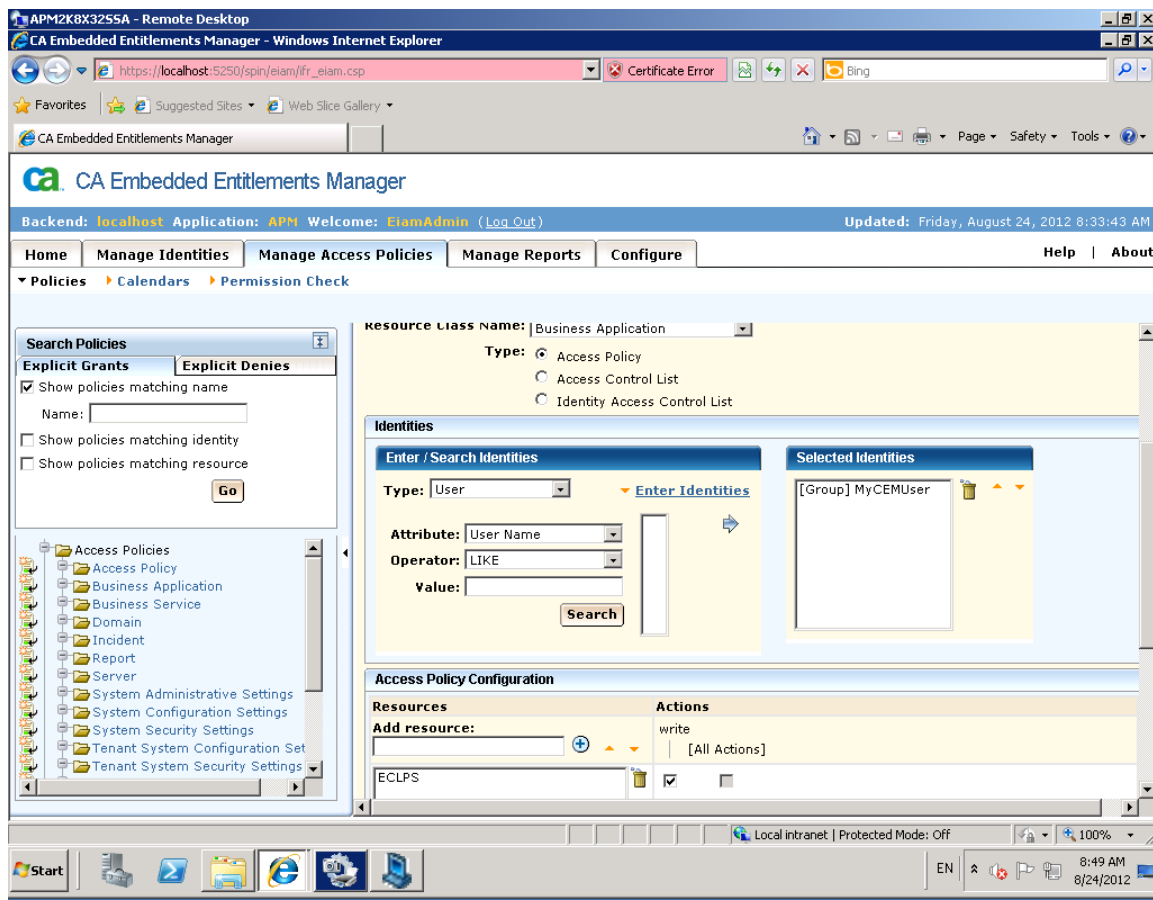



7. I would like to restrict cemu2 and cem3 to only be able to access ECLPS specific Business Application:

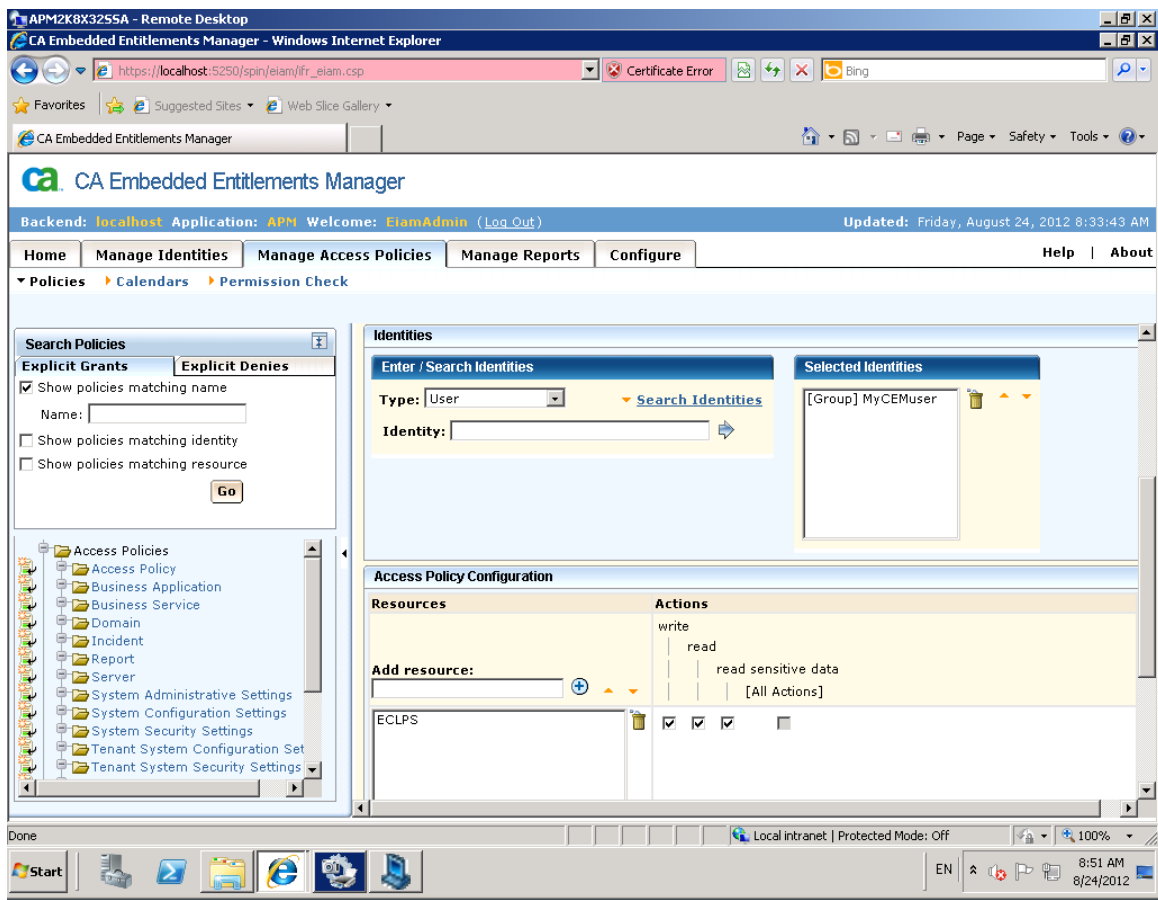
Go to EEM UI, click “Manage Access Policies”

- a) Click on “Business Applications”, click on the icon to create a new Policy , select type=“Application Group”, click search Identities, click “Search”, move “MyCEMUser” group to the selected identities box.  
Add “ECLPS” as a new resource  
Set Action=“write”

Save



- b) Click on "Business Services" (NOTE: this is a requirement for the Business application to work) ", click on the icon to create a new Policy  , select type="Application Group", click search Identities, click "Search", move "MyCEMUser" group to the selected identities box.  
Add "ECLPS" as a new resource  
Tick all actions



8. Connect using cemu2.

Results: Only “Administration” tab will be available and only “ECLPS” Business Services and Business application are available to the user.

CA Customer Experience Manager - Microsoft Internet Explorer provided by CA

http://lodvmapi005.ca.com:8081/wily/cem/tess/app/admin/overview.html?pid=1

File Edit View Favorites Tools Help

CA CA Homepage CA Printers CA QMS CA Smart CA Time CA Travel caNet CANet Portal Corporate Escalation ExpenseIT GIS GIS Desktop Management GIS Helpdesk

Knowledge Library View-pag... Wily Technology - Engineerin... Labs on Demand CA Customer Experience...

CA Introscope cemu2 cemu2 (Log Out) Help

Administration

Overview Business Applications Business Services Specifications Recording Sessions Transaction Discovery

Overview report showing all transactions and their related specifications. Click any link to view details. More...

Business Services	Business Transactions	Transactions	Slow Time	Fast Time	High Throughput	Low Throughput	Large Size	Small Size	Success Rate SLA	Sigma SLA	Transaction Time SLA
ECLPS									95.000%	4.0	8.000s
	Account Search		Off	Off	Off	Off	Off	Off	95.000%	4.0	8.000s
		<a href="#">cliq/AccountSearch.action</a>	Off	Off	Off	Off	Off	Off	95.000%	4.0	8.000s
	Account Search - Found		Off	Off	Off	Off	Off	Off	95.000%	4.0	8.000s
		<b>Account Search - Found</b>	Off	Off	Off	Off	Off	Off	95.000%	4.0	8.000s
	Account Search - Not Found		Off	Off	Off	Off	Off	Off	95.000%	4.0	8.000s
		<b>Account Search - Not Found Response</b>	Off	Off	Off	Off	Off	Off	95.000%	4.0	8.000s
	Billing AF Complete		Off	Off	Off	Off	Off	Off	95.000%	4.0	8.000s
		<b>BillingContactAF.action</b>	Off	Off	Off	Off	Off	Off	95.000%	4.0	8.000s
		jquery.extensions.js.jsp	Off	Off	Off	Off	Off	Off	95.000%	4.0	8.000s
		AsyncRequestUnderwritingQuestions.js.jsp	Off	Off	Off	Off	Off	Off	95.000%	4.0	8.000s
		AsyncRequestRatingStatus.js.jsp	Off	Off	Off	Off	Off	Off	95.000%	4.0	8.000s
		AsyncRequest.js.jsp	Off	Off	Off	Off	Off	Off	95.000%	4.0	8.000s
		AccountDetails.action	Off	Off	Off	Off	Off	Off	95.000%	4.0	8.000s
		jquery.extensions.js.jsp(2)	Off	Off	Off	Off	Off	Off	95.000%	4.0	8.000s
		AsyncRequestRatingStatus.js.jsp(2)	Off	Off	Off	Off	Off	Off	95.000%	4.0	8.000s
		AsyncRequest.js.jsp(2)	Off	Off	Off	Off	Off	Off	95.000%	4.0	8.000s
		AsvncRequestUnderwritingQuestions.js.jsp(2)	Off	Off	Off	Off	Off	Off	95.000%	4.0	8.000s

Local intranet 100%

CA Customer Experience Manager - Microsoft Internet Explorer provided by CA

http://lodvmapi005.ca.com:8081/wily/cem/tess/app/admin/appDefList.html?pid=1

File Edit View Favorites Tools Help

CA CA Homepage CA Printers CA QMS CA Smart CA Time CA Travel caNet CANet Portal Corporate Escalation ExpenseIT GIS GIS Desktop Management GIS Helpdesk

Knowledge Library View-pag... Wily Technology - Engineerin... Labs on Demand CA Customer Experience...

CA Introscope cemu2 cemu2 (Log Out) Help

Administration

Overview **Business Applications** Business Services Specifications Recording Sessions Transaction Discovery

A business application is a software program that automates a business service. Every transaction is associated with a business application. Click New to create a new business application. More...

**New** **Delete**

<input type="checkbox"/>	Name	Authentication Type	Business Application Type	Description	User Processing Type	Character Encoding
<input type="checkbox"/>	<a href="#">Default Application</a>	Application Specific	Generic	Default Application	Enterprise	ISO-8859-1
<input type="checkbox"/>	ECLPS	Application Specific	Generic	ECLPS	Enterprise	ISO-8859-1

Copyright ©2012 CA Technologies, Inc. All rights reserved. About

Local intranet 100%



CA Customer Experience Manager - Microsoft Internet Explorer provided by CA

http://lodymapm005.ca.com:8081/wily/cem/tess/app/admin/transDefGroupList.html?pid=1

File Edit View Favorites Tools Help

CA Home Page CA Printers CA QMS CA Smart CA Time CA Travel caNet CANet Portal Corporate Escalation ExpenseIT GIS GIS Desktop Management GIS Helpdesk

Knowledge Library View-pag... Wily Technology - Engineerin... Labs on Demand CA Customer Experience...

CA Introscope

cemu2 cemu2 (Log Out) Help

Administration

Overview Business Applications Business Services Specifications Recording Sessions Transaction Discovery

Business Services

A business service is an arbitrary collection of business transactions that your customers complete via web applications. More...

Business Services | Business Transactions Search | Agent Filters

New Delete Save to CSV

<input type="checkbox"/>	Name	Impact Levels	Business Application	Number of Business Transactions	Number of Enabled Business Transactions
<input type="checkbox"/>	ECLPS	Medium (Default)	ECLPS	29	29

Copyright ©2012 CA Technologies, Inc. All rights reserved. About

http://lodymapm005.ca.com:8081/wily/cem/tess/app/admin/transSetDefSearch.html?first=true

CA Customer Experience Manager - Microsoft Internet Explorer provided by CA

http://lodymapm005.ca.com:8081/wily/cem/tess/app/admin/defectDefSearch.html?first=true

File Edit View Favorites Tools Help

CA Home Page CA Printers CA QMS CA Smart CA Time CA Travel caNet CANet Portal Corporate Escalation ExpenseIT GIS GIS Desktop Management GIS Helpdesk

Knowledge Library View-pag... Wily Technology - Engineerin... Labs on Demand CA Customer Experience...

CA Introscope

cemu2 cemu2 (Log Out) Help

Administration

Overview Business Applications Business Services Specifications Recording Sessions Transaction Discovery

Specifications

Select a specific business service, business transaction, defect type, or type the name of a defect and click Search. More...

Business Service: All Business Transaction: All Defect Type: All Defect Name: Search

Search Results

You can enable or disable monitoring on a selected transaction. You can also set a condition to a specific value, set the baseline, or lock the current value. More...

Enable Disable Lock

Nothing found to display.


Copyright ©2012 CA Technologies, Inc. All rights reserved. About

We can extend further the permissions:

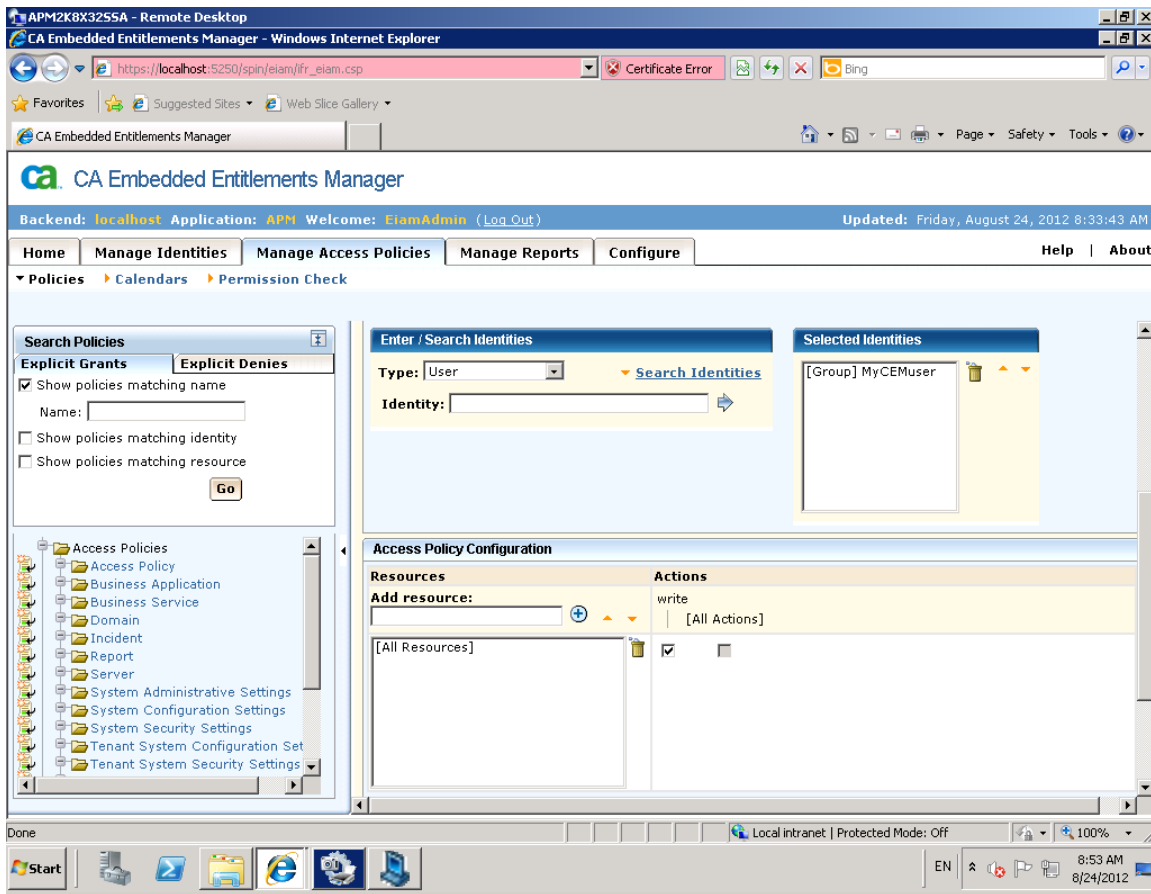
c) Allow the users access to the “CEM > Incidents” page:

Go back to EEM > APM application using EiamAdmin

Select “Manage Access Policies”

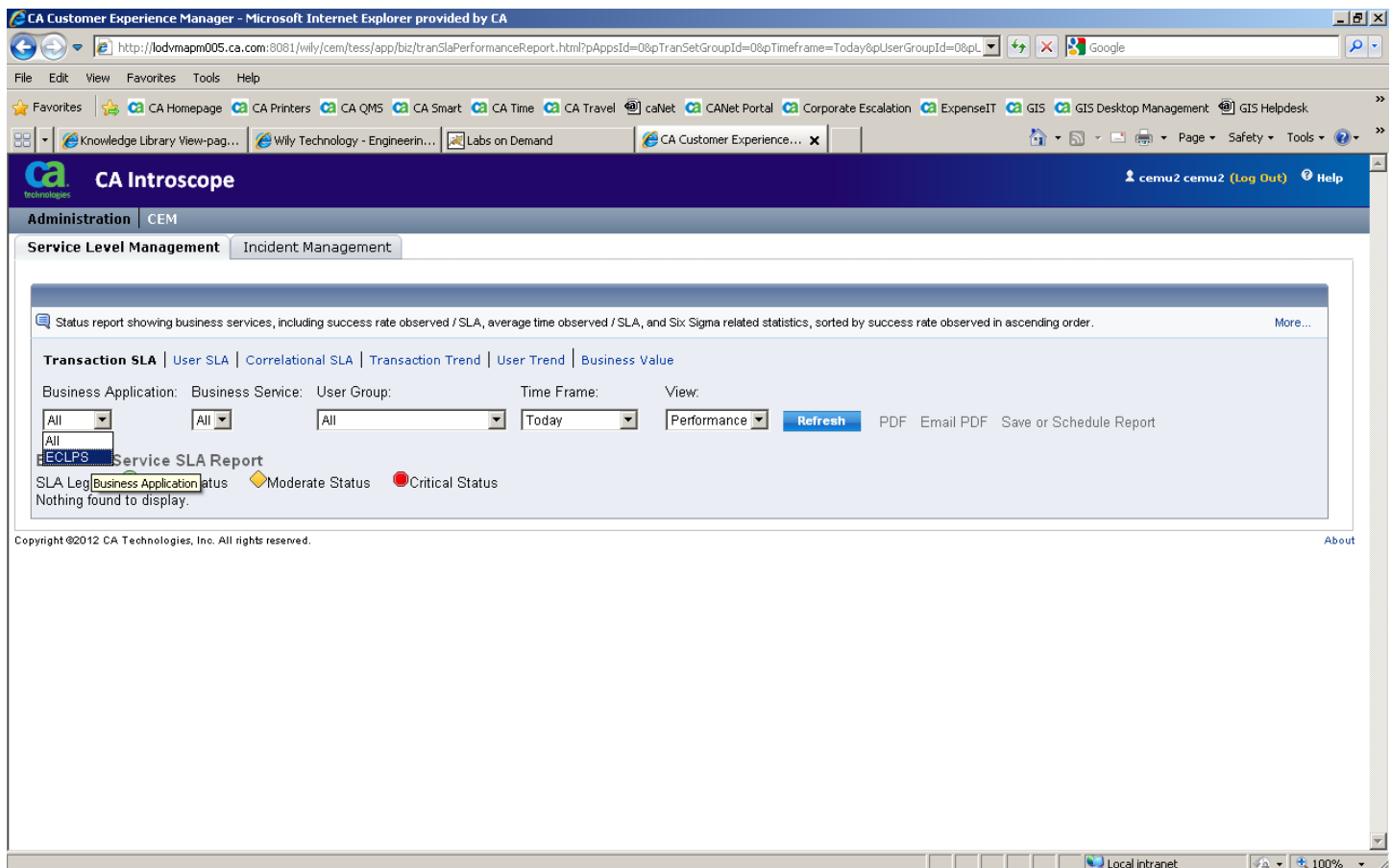
Click on “Incidents”, click on the icon to create a new Policy  , select type=“Application Group”, , click search Identities, click “Search”, move “MyCEMUser” group to the selected identities box.

Leave resources as it is, finally tick “Write” action




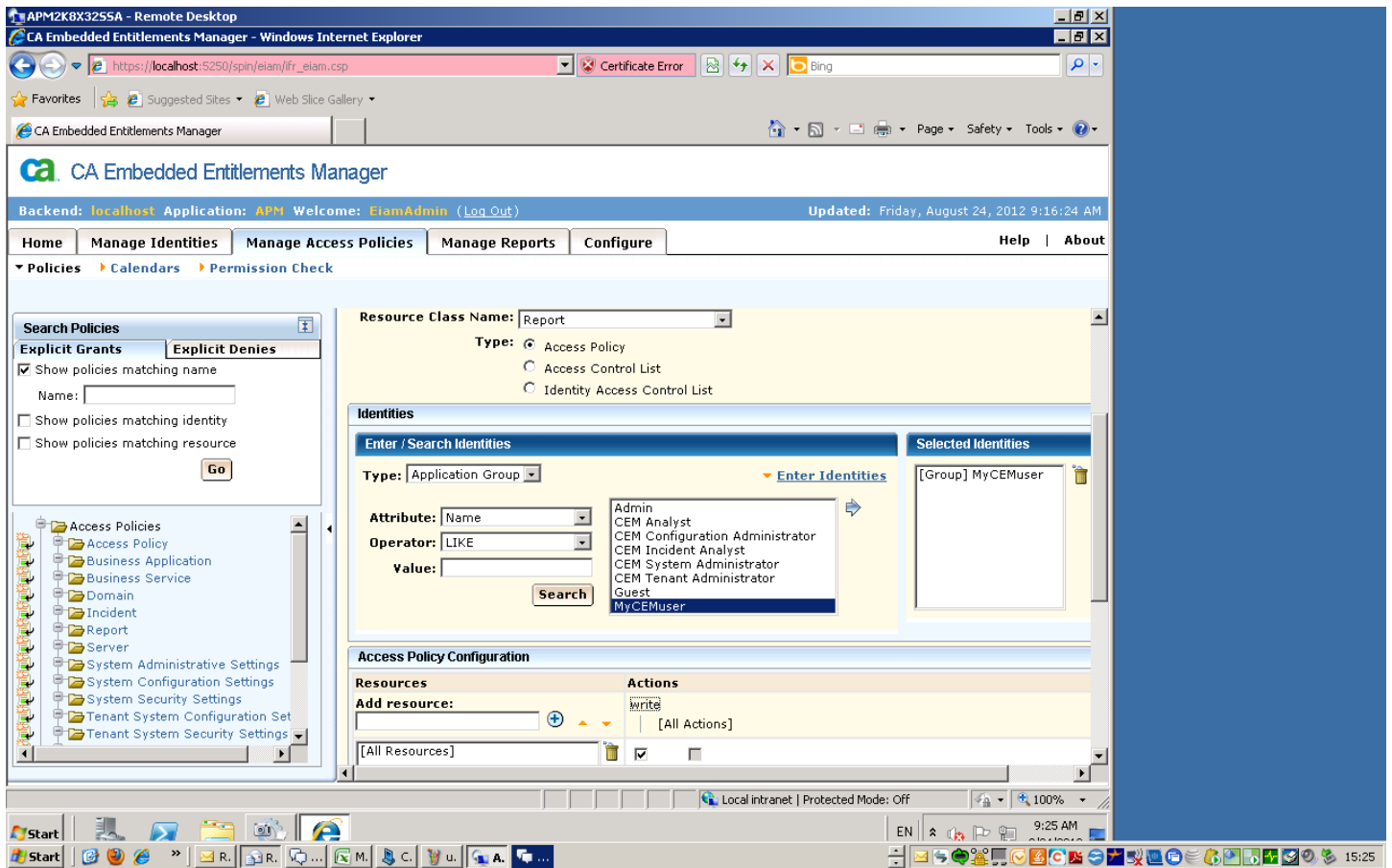
Check the results:

The new CEM tab will be available and still the user will only be able to see “ECLPS” business application.



c) Extend permissions further to Reports:

Click on "Reports", click on the icon to create a new Policy , select type="Group", click search Identities, click "Search", move "MyCEMUser" group to the selected identities box. Leave "Resources" as it is, finally tick "Write" action



Result: new report tabs appear.

